

ACT Region Heritage Symposium 2024

Retaining and Enhancing
Canberra's Character

galian



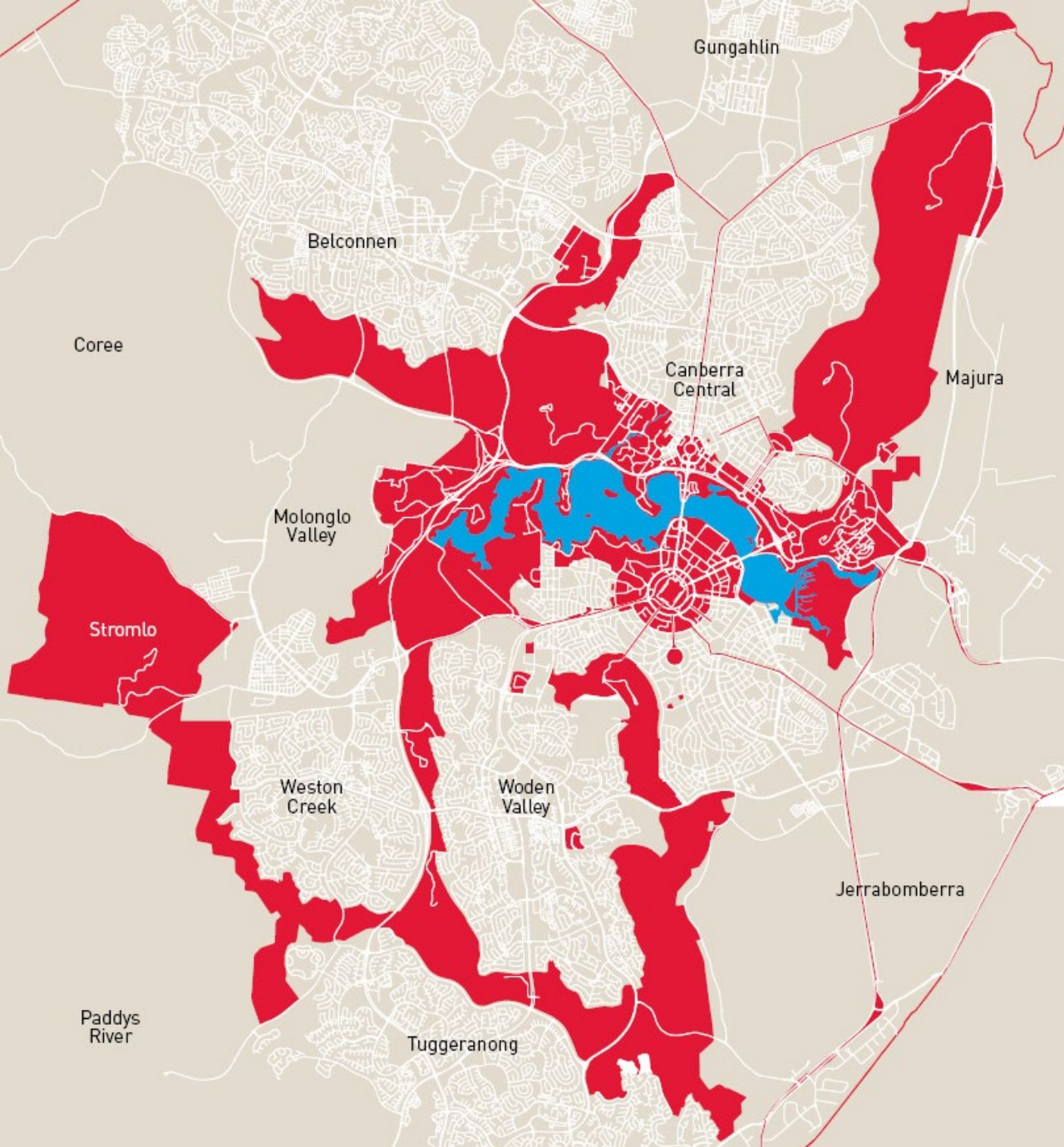
Role

The National Capital Authority manages the Australian Government's continuing interest in the planning and development of Canberra as our National Capital.

This includes:

- Broad oversight of planning in the Territory as a whole
- Planning, design and development of areas having special characteristics of the National Capital





Regulatory Framework

Australian Capital Territory (Planning and Land Management) Act 1988

- Governs the Territory's planning and development

National Capital Plan

- Forms the planning framework for specific areas of Canberra that have special characteristics of the National Capital (Designated Areas)

Environment Protection and Biodiversity Conservation Act 1999

- Australian Government environmental legislation (including heritage)



Australian Government
National Capital Authority

The National Capital Plan

Purpose:

...to ensure that Canberra and the Territory are planned and developed in accordance with their national significance.

Recognises the importance of the unique purpose, setting, character and symbolism of Australia's National Capital.



Australian Government
National Capital Authority



National Capital Plan

Key objectives:

- Recognise the pre-eminence of the role of Canberra and the Territory as the National Capital
- Preserve and enhance the landscape features which give the National Capital its character and setting
- Respect the Griffins' plan for Canberra
- Create, preserve and enhance sites, approaches and backdrops for national institutions, ceremonies and other National Capital uses
- Respect environmental values



Australian Government
National Capital Authority

The National Capital

International role as Australia's capital

Seek to achieve harmony between architecture and landscape, to give continuing effect to the City Beautiful and Garden City characteristics of the city

Vistas to major landscape feature protected from and enhanced by development

Building heights generally within the height of mature tree canopy; central Canberra RL 617



Australian Government
National Capital Authority



Landscape Setting

Inner hills and ridges surround and frame urban areas, lakes, river corridors, and the distant mountains and bushland to the west



Broader hill, ridges and buffer areas preserved from urban development to provide unified background and landscape setting

Open space system that provides for separate but linked towns, a natural setting for urban areas and reinforces garden character of Canberra



Australian Government
National Capital Authority

The Griffins' Plan

Main elements:

- Use of topography as an integral design feature and as a setting
- Symbolic hierarchy of land uses designed to reflect order and functions of democratic government
- Geometric plan with central triangle formed by grand avenues terminating at Capital Hill, the symbolic centre of the nation
- System of urban centres



Australian Government
National Capital Authority



Managing Change

Tools:

- Works Approval - decisions in accordance with National Capital Plan
- EPBC Act protections
- Heritage Impact Assessment (HIA) - impacts assessed to meet standards of EPBC Act
- Heritage Management Plans (HMPs)



National Library

Heritage assessment

HIA

Referral

Community engagement

permit to replant

Works Approval



Australian Government
National Capital Authority