

EXPLORE



Group Visit Guide

Dundullimal Homestead





There is much to be admired at Australia's oldest and most refined slab house built on the banks of the Macquarie River



Aerial view of Dundullimal Homestead and stables (National Trust image)
Cover: Dundullimal Homestead (photography by Barbara Scott)

Dundullimal Homestead, Dubbo

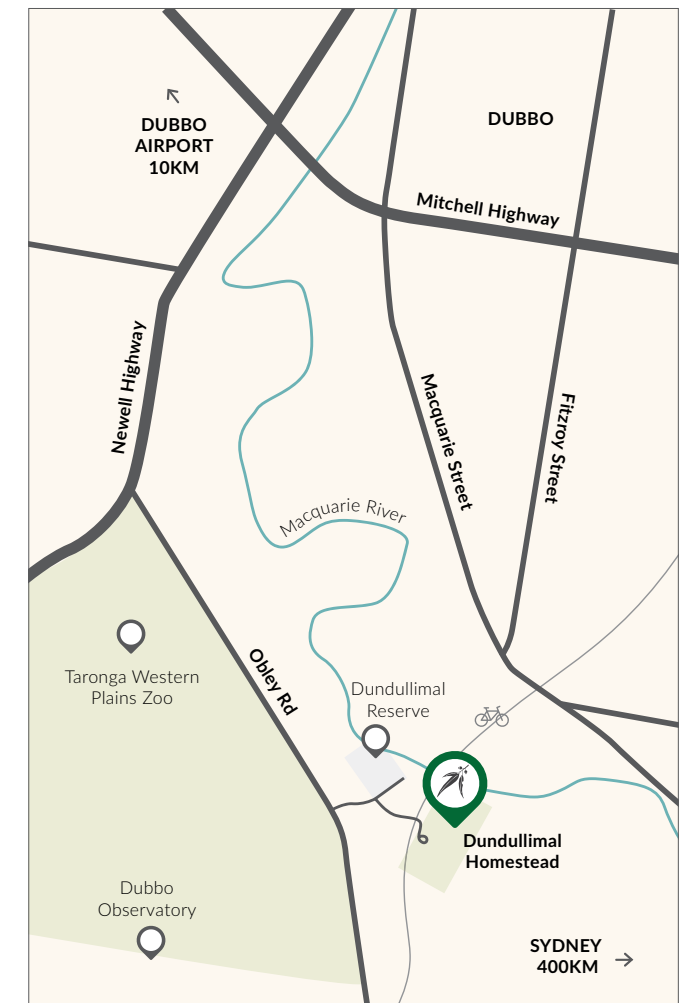
Built in 1839, Dundullimal Homestead is an idyllic rural homestead featuring architectural detail such as cedar joinery, French doors and cobblestone paved verandahs. Surrounded by centenarian trees enjoy exploring this beautifully restored and unique connection to our rural past.

The stables were built with local sandstone quarried on Dundullimal land and display the working life of a sheep and cattle station along with the blacksmiths forge, sunken coal room and groom's quarters.

In the 1870s, a large shed with slab walls in the style of the Homestead was built to house animals, horse drawn vehicles and farm machinery. Today, 'The Shed' operates as a café and function room.

Dundullimal Homestead was gifted to the National Trust (NSW) in 1985 for safe-keeping for future generations by the Palmer family.

Located in Wiradjuri Country, Dubbo in the Central West, Dundullimal Homestead is only a 5 minute drive past Taronga Western Plains Zoo.



The original slab house dates back to 1839 (National Trust image)

GETTING TO DUNDULLIMAL HOMESTEAD

Address

23L Obley Road, Dubbo, NSW.

By car

From the Newell Highway turn onto the Obley Road and follow the signs to Dundullimal Homestead.



Group Visits

Dundullimal Homestead is just the place for a perfect day out with heritage highlights. There's plenty of parking, some picnic tables to relax in the shade and it's easy to navigate around the buildings and grounds.

1

GUIDED PROPERTY TOUR

\$12 per person | Allow 60 to 90 minutes

Experienced guides unlock the fascinating history of one of Australia's iconic and unique Homesteads. Highlights of the tour include the unique collection of 1850s furniture, cobblestone verandah and fine architectural detail that speaks of the pride and sophistication of the time. Includes exploration of the stables, Timbreebongie Church, working windmill, blacksmith's forge and machinery lane for a real sense of working life on a sheep and cattle station from a bygone era.

2

GUIDED PROPERTY TOUR AND DEVONSHIRE TEA

\$27 per person | Allow 90 to 120 minutes

Combine a guided visit of the Homestead with its clever architecture and low verandah designed to provide comfortable living in this environment, with a delicious Devonshire Tea served in the cosy and calm Shed Café. A perfect opportunity to enjoy the tranquil rural setting.



The Timbreebongie Church was built in 1870 (National Trust image)



Lavender in bloom (National Trust image)



Delicious Devonshire Tea served in the Shed Café
(National Trust image)

Dundullimal Homestead
is a spectacular place
to visit all year round



Saumarez Homestead is an Edwardian mansion that dates back to 1888
(photography by Jarrad Stevenson)



The Macquarie River in the Great Western Plains around Dubbo
(photography by Taras Vyshnya via Alamy.com)



Western Plains Cultural Centre (image supplied by
Western Plains Cultural Centre)

Make a day of it

Plan your trip to include a Devonshire Tea at our Shed Café, a visit to the Taronga Western Plains Zoo and the Western Plains Cultural Centre.

IN AND AROUND DUBBO

Immerse yourself in the rich and vibrant history of the Royal Flying Doctor Service. Fully accessible and appropriate for all ages, the centre covers a broad range of interactive experiences.

Head behind bars at the Old Dubbo Gaol to experience 19th century prison life.

FURTHER AFIELD

Saumarez Homestead, Armidale

Less than 5 hours' drive from Dubbo is National Trust property Saumarez Homestead in Armidale.

Built in 1888 the intact furnished mansion is a time capsule of family life, largely untouched since the Edwardian era and features an extensive collection that illustrates the story of pastoral life in the 19th century.

Saumarez Homestead

(02) 6772 3616

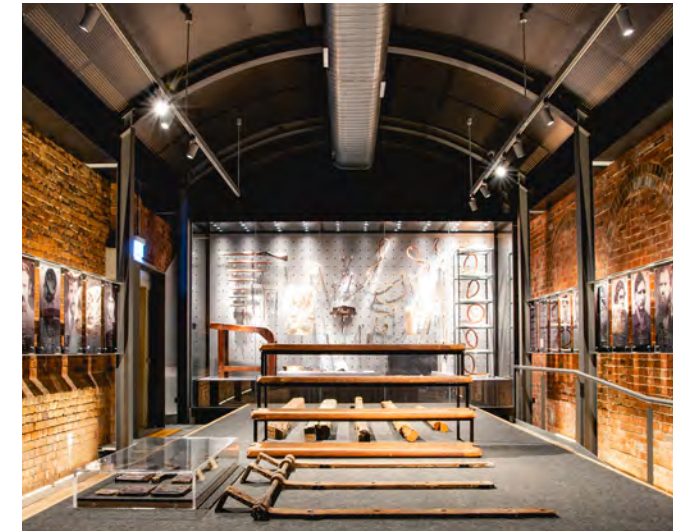
saumarez@nationaltrust.com.au

nationaltrust.org.au/places/saumarez-homestead

Group Visits

Enjoy a group visit to one of the many National Trust gardens, galleries and house museums across Sydney and regional New South Wales.

More information at nationaltrust.org.au/group-visits



Old Dubbo Gaol (photography by Dillon Price Photography)

CATERING OPTIONS

The Shed Café

Talk to us about booking a delightful Devonshire Tea for your group, with scones accompanied by local produce cream from Little Big Dairy with Beerenberg jam served at the Shed Café. Choose from a plunger coffee and a range of loose-leaf teas. Please advise in advance of any special dietary requirements.

The Shed Café also offers a selection of other hot and cold drinks, ice creams, soup and biscuits.

Self-catering

Bring your own lunch to enjoy in the beautiful parkland surrounding the Homestead. There are a limited number of picnic tables. We can provide some trestle tables and chairs for up to 20 people with prior booking. At the Shed Café there's a variety of hot and cold drinks available.



Facilities

More information to assist you plan a great day out for everyone in your group.

Parking

Free parking for cars and coaches, RV's and caravans is available on site, close to the entrance.

Accessibility

If the group includes visitors with limited mobility, walkers, or wheelchair, please let us know in advance. We have a mobile ramp to access the Homestead.

Gravel paths enable level access to most areas of the garden and some paths can be uneven. Most of the gravel pathways throughout the gardens are accessible by wheelchair.

Bathrooms

Toilets, including ambulant toilet are available on site.

Gifts

Allow some time to browse the beautiful range of gifts and keepsakes on offer at visitor reception. We support local makers and creators by stocking local products. All purchases support the conservation and care of National Trust (NSW) properties.



Dundullimal Homestead (photography by Barbara Scott)

Group Visit Terms and Conditions

All bookings are made with the National Trust of Australia (NSW) (ABN 82491 958 802). By booking a visit with us you are deemed to have agreed to these Group Visit Terms and Conditions (which constitutes the entire agreement between you and us) and your booking will be accepted by us on this basis. The services to be provided are those referred to in your booking confirmation email and invoice.

Payment

1. Invoices will be issued for all payments and payments must be made by direct transfer or by debit/credit card. American Express is not accepted. Only a single payment as per invoice will be accepted.
2. A non-refundable deposit of \$100 is required to confirm your booking.
3. Final numbers for your group required at least 10 days prior to the date of visit. The balance of payment will be confirmed and invoiced based on these final numbers.
4. Full payment is required before your visit.
5. Group tour leaders, coach drivers and carers acting in that capacity during a group visit are entitled to free admission to the property on the day of the group's visit.
6. National Trust Membership discounts will be applied subject to Members showing proof of Membership upon arrival. Please advise when confirming final numbers if any of your group are National Trust Members.

Group sizes

7. Minimum group size of 20 people applies. Large groups may be split into smaller groups to ensure the visit is a memorable experience.

Amendments to bookings

8. Any request to change your booking must be made in writing, by emailing dundullimal@nationaltrust.com.au
9. Changes to dates and session times are subject to availability.
10. On the day of the visit, should the number of visitors be less than the minimum number required, the cost will remain at minimum number. Should the number of visitors be greater than the number booked you will be invoiced for the additional visitors.

Cancellation and refund policy

11. Cancellations must be made in writing to dundullimal@nationaltrust.com.au
12. If you cancel your booking within 10 days of your visit, or if you fail to arrive on the scheduled day, no refunds apply.
13. The National Trust of Australia (NSW) reserves the right to cancel your visit should the need arise. If we cancel your trip, payments made may be applied to a mutually agreed alternative date or you may request a refund. In circumstances where the cancellation is due to external events outside our reasonable control, refunds will be less any unrecoverable costs.

Arrival times

14. Please arrive 15 minutes prior to your scheduled booking time to allow for check-in. In the event of late arrival, please contact Dundullimal Homestead on (02) 6884 9984. We cannot guarantee guide availability if groups arrive later than booked time.

Weather impacts

15. For the safety and comfort of our visitors, it may be necessary to close the property in the event of extreme weather conditions. If this should happen your booking will be rescheduled or fully refunded.

Protecting the collection and property

16. For the protection of our historic collections and properties, large bags and backpacks are not permitted inside our buildings. The National Trust of Australia (NSW) takes no responsibility for stored belongings.

Video, sound and photography

17. Photography is permitted. Video or sound recording is not permitted inside the house or on guided tours.

Insurance

18. Group visitors are covered by National Trust (NSW) Public Liability Insurance. In case of specific concern on the day, please immediately contact the manager or tour leader.

Catering

19. All catering must be arranged in advance of your visit. We endeavour to cater for visitors with allergies or food intolerances, however there may be traces of gluten or nuts in any food or beverages. Please confirm all dietary requirements at the time of booking. Contact us for more information.

Trading terms

20. Group visits are not available on NSW public holidays and not all tour options are available every day the property is open.
21. Confirmation of a booking request is subject to property, staff and volunteer availability and payment of a non-refundable deposit.

Safety

22. Please take care when exploring the gardens: there is loose gravel on the paths, some paths are uneven and may become slippery in wet weather.
23. All children under 15 years must be supervised by an adult at all times.



Group Visit Booking Request

DUNDULLIMAL HOMESTEAD

To request a group booking please complete this form and email to dundullimal@nationaltrust.com.au

VISITOR INFORMATION			
Group name:		Group size (minimum 20):	
Contact name:			
Contact email:			
Contact phone:			
Contact name and phone details on the day (if different from above):			
BOOKING DETAILS			
Day:		Date: / /	
Estimated arrival time:		Group tours can be booked from 11am with last tour starting at 3pm	
Estimated departure time:			
GROUP VISIT OPTIONS (please select one)		Price per person	Number of people (minimum 20)
<input type="checkbox"/> GUIDED PROPERTY TOUR (allow 60 to 90 minutes) Explore Dundullimal Homestead with a fully guided tour. Highlights include the unique collection of 1850s furniture, cobblestone verandah and architecture, plus explore the grounds for a real sense of working life on a sheep and cattle station from a pioneering past.		\$12	
<input type="checkbox"/> GUIDED PROPERTY TOUR AND DEVONSHIRE TEA (allow 90 to 120 minutes) Enjoy a guided tour of the property and a tasty Devonshire Tea served in the Shed Café. Please advise in advance of any special dietary requirements.		\$27	

ACCEPTANCE OF TERMS & CONDITIONS	
As representative of the above group, I confirm that I have read and accept the terms and conditions outlined in the Group Visit Guide.	
Print Name:	Signature:

IMPORTANT INFORMATION	
Booking confirmation	Not all tour options are available every day the property is open. Your booking and a schedule for your visit will be confirmed in writing.
Payment	Invoices will be issued for all payments. Final numbers are required at least 10 days prior to the date of the visit. Full payment is required before you visit. Please see full terms and conditions in the Group Visit Guide.
Group size	Minimum group booking number is 20. Large groups may be split into smaller groups to tour the property.
Arrival times	We cannot guarantee guide availability if your group arrives later than the confirmed time.
Opening hours	Dundullimal Homestead gates open at 11am and close at 3pm.
Coach/car parking	Free onsite parking for cars and coaches.
Accessibility	There is one step up into the Homestead. There are wheelchair accessible toilet facilities. Access to the Homestead, outbuildings and grounds from the car park is pedestrian. Portable ramp provided for Homestead access.
Wet weather	There are limited undercover areas in the grounds. Visitors should be prepared for all weather events.
Directions	Main Entry is at 23L Obley Road, Dubbo. Turn off the Newell Highway and follow the signs to Dundullimal Homestead.

OFFICE USE ONLY		
Booking taken by:	Date taken:	Confirmation date:
Program confirmed:	Invoiced:	Payment received:




Dundullimal Homestead (photography by Barbara Scott)

Contact us

23L Obley Road, Dubbo, NSW
dundullimal@nationaltrust.com.au
(02) 6884 9984

For information about our opening times and special events,
visit nationaltrust.org.au/places/dundullimal-homestead

 @Dundullimal

 @nationaltrustnsw

#dundullimalhomestead