

**ILLEGAL MOUNTAIN BIKE TRACK BUILDING AND USE IN G BGO NATIONAL PARK & BGO REGIONAL PARK – IMPACTS TO HERITAGE SITES.**

(BY NORM STIMSON).

ACCORDING TO THE “TRAILFORKS” WEBSITE, THERE ARE OVER 170KM OF UNSANCTIONED MOUNTAIN BIKE TRACKS DEVELOPED IN THE BENDIGO AREA. MOST OF THESE ARE LOCATED IN EITHER GREATER BENDIGO NATIONAL PARK OR BENDIGO REGIONAL PARK – BOTH UNDER PARKS VICTORIA MANAGEMENT. MANY SECTIONS OF THESE TRACKS ARE THEMSELVES ILLEGAL. E.G. COMPRISING OF NATIVE VEGETATION REMOVAL WITHOUT A PERMIT AND OR WITHOUT OFFSETS ETC. (SEE PLANS BELOW).

MANY OF THESE TRACKS GO THROUGH AND DISTURB PROTECTED HERITAGE SITES INCLUDING HISTORIC MINING SITES. IF ON THE VICT HERITAGE REGISTER A HERITAGE VICTORIA PERMIT IS REQUIRED TO DISTURB AND IF ON THE VICT HERITAGE INVENTORY OR AN ARCHAEOLOGICAL SITE A HERITAGE VICTORIA CONSENT IS REQUIRED.

PARKS VICTORIA AS THE RESPONSIBLE LAND MANAGER IS APPARENTLY DOING “NOTHING” TO ADDRESS THE MOUNTAIN BIKE TRACKS AND USE. NO APPARENT PROTECTION IS BEING AFFORDED TO ANY SITES. INDEED, PARKS VICTORIA IN RECENT YEARS *ISSUED PERMITS* FOR MOUNTAIN BIKE EVENTS ON THESE UNAUTHORIZED / ILLEGAL TRACKS, MANY OF WHICH ARE ILLEGAL AND WHERE THERE WERE ALSO UNAUTHORIZED / ILLEGAL IMPACTS TO HERITAGE SITES (E.G. THE BENDIGO GOLDEN TRIANGLE EPIC EVENTS).

PHOTO 1. ILLEGAL MOUNTAIN BIKE TRACKS OVER AND THROUGH A HISTORIC GOLDFIELDS MINING DAM WALL. BENDIGO REGIONAL PARK.



PHOTO 2. ILLEGAL MOUNTAIN BIKE TRACK AND USE OVER A HISTORIC GOLDFIELDS DAM BANK. BENDIGO REGIONAL PARK.



PHOTO 3. ILLEGAL MOUNTAIN BIKE TRACK AND USE THROUGH HISTORIC MINE SITE. BENDIGO REGIONAL PARK.



PHOTO 4. ILLEGAL MOUNTAIN BIKE TRACK AND USE THROUGH HISTORIC OLD GOLD WORKINGS / ALLUVIAL DIGGINGS. BENDIGO REGIONAL PARK.



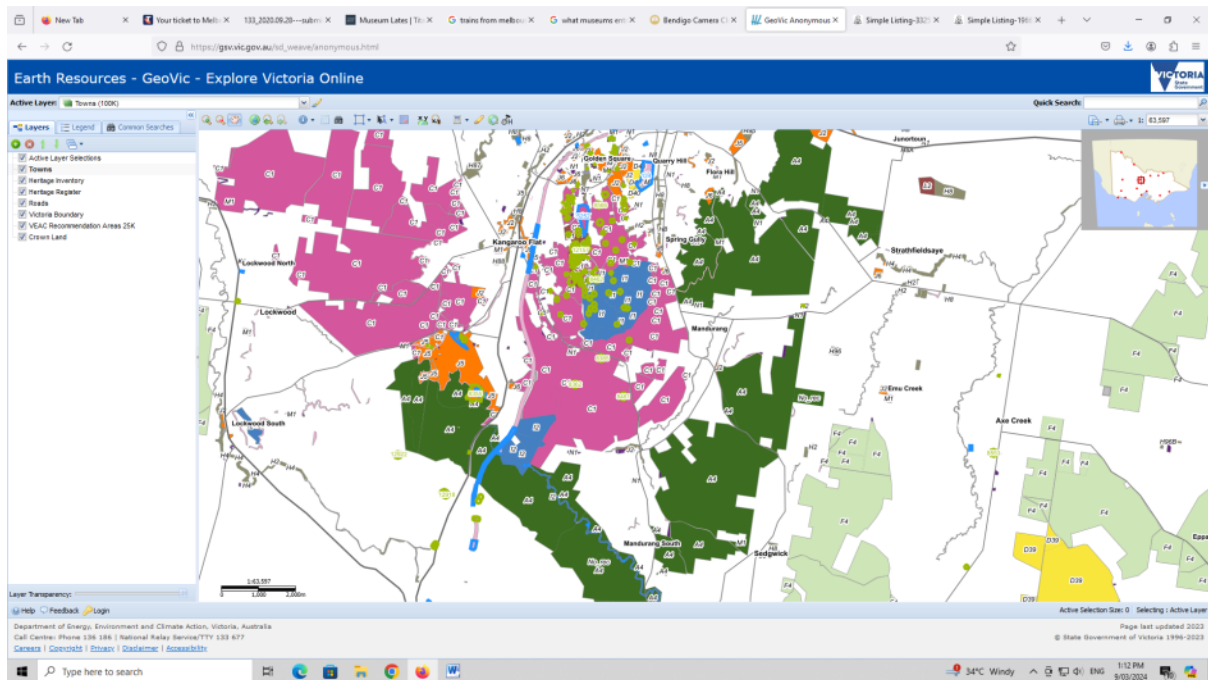
PHOTO 5. ILLEGAL MOUNTAIN BIKE TRACKS AND USE OVER HISTORIC MINING MULLOCK AND OTHER DISTURBANCE AND IMPACTS TO SITE.



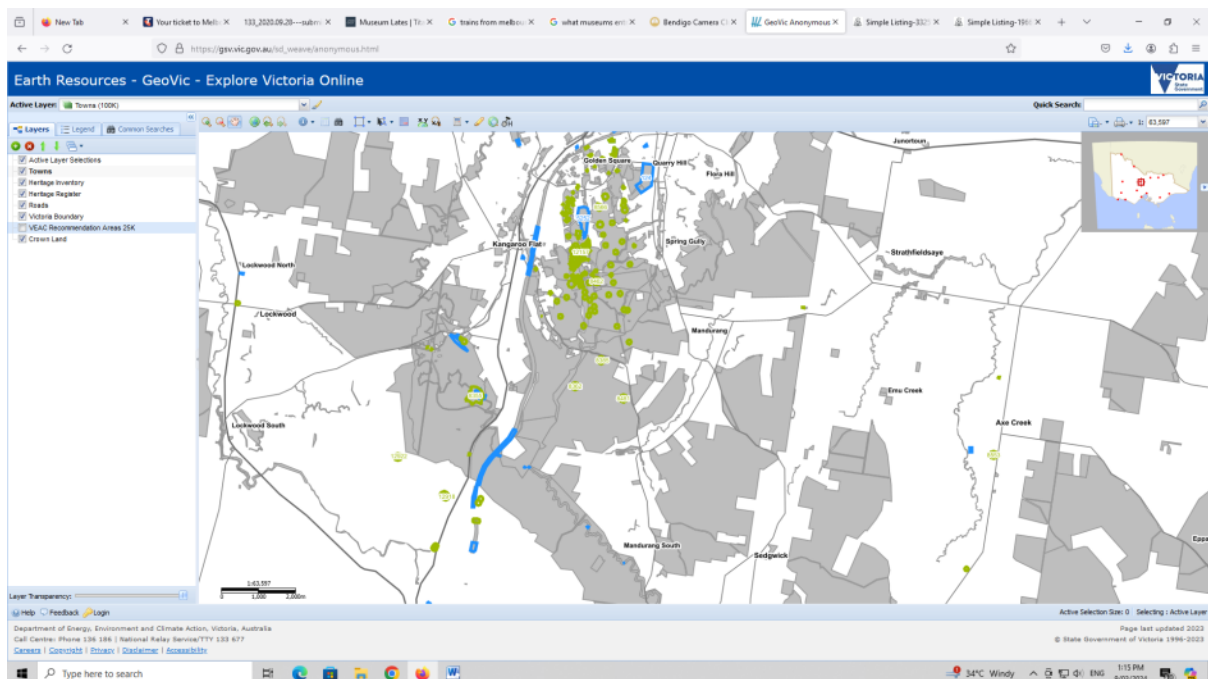
PHOTO 6. ILLEGAL MOUNTAIN BIKE TRACKS AND USE OVER HISTORIC MINING MULLOCK AND OTHER DISTURBANCE AND IMPACTS TO SITE



**GEOVIC PLAN: PUBLIC LAND CATEGORIES – DARK GREEN = GREATER BENDIGO NATIONAL PARK; PINK = BENDIGO REGIONAL PARK. LIGHT GREEN DOTS REPRESENT VHR OR VHI SITES.**

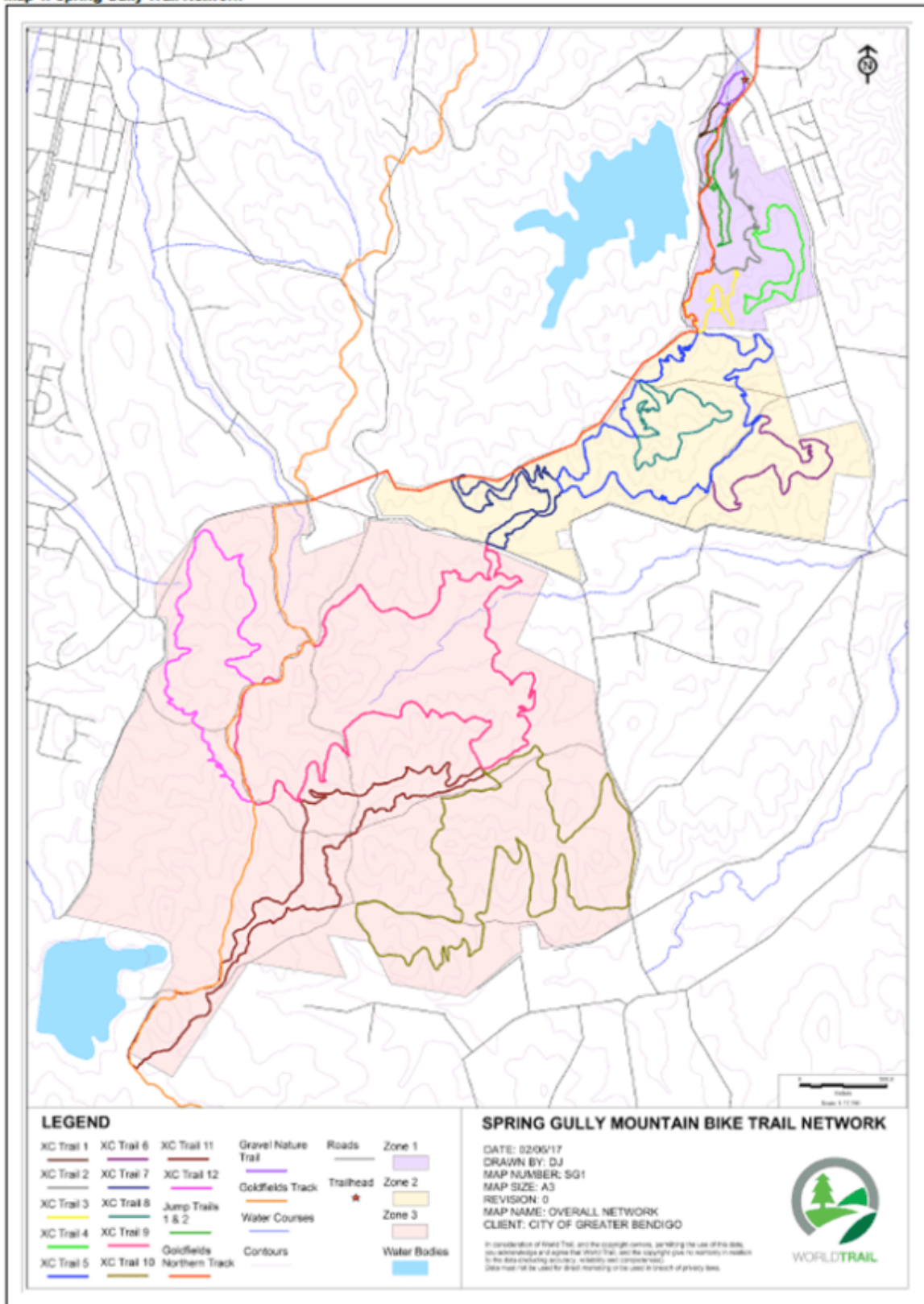


**GEOVIC PLAN: PUBLIC LAND CATEGORIES – GREY AREA SHADING IS CROWN LAND. LIGHT GREEN DOTS REPRESENT VHR OR VHI SITES.**



SUBSTANTIALLY ILLEGAL MOUNTAIN BIKE TRACK NETWORK SPRING GULLY AREA AND BEYOND.

Map 1. Spring Gully Trail Network



# FROM TRAILFORKS WEBSITE.

