

## Pentridge Prison – Prison Break Explorers



Social Script – for the families and teachers of students who are on the Autism Spectrum visiting Pentridge Prison.

# What is Pentridge Prison?

Pentridge Prison used to be a jail where people were locked up if they broke the law in the olden days. It isn't a jail anymore. Now we visit Pentridge Prison to learn about history and see some old things. There isn't anyone locked up there anymore.



# Arriving

When we arrive at Pentridge Prison, I will listen to my teacher. When I get off the bus, I will stay away from the road. I might be able to hear the traffic from the road, it might be loud.



# Toilets

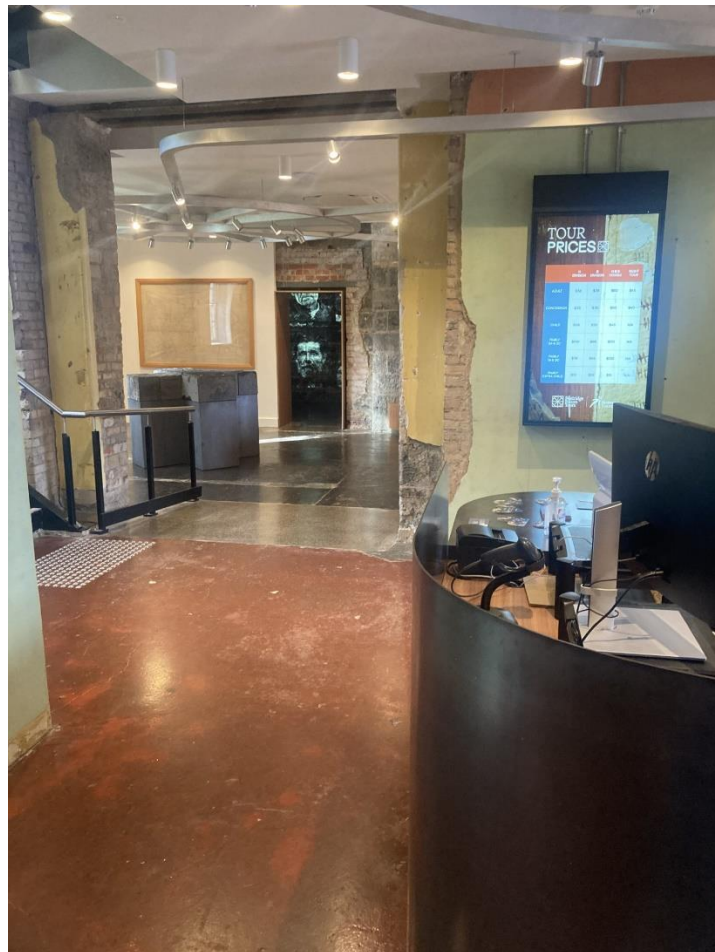
If I need to go to the toilet, I will ask my teacher first.

The toilets are inside the shopping centre. I will make sure to go to the toilet before the tour starts.



# Warders

The warders building is where we will meet our tour guide. We will wait outside for our guide. I will use my quiet voice.



# Tour

The tour guide will show us around outside. It might be raining, or it might be sunny. We will hear about people who escaped the prison in the olden days.



# H Division

Our tour guide will then take us to H Division, which is an old jail cell block. There are no prisoners there anymore. We will enter through a side door.



# Inside H Division

Inside the cell block might be dark. But it isn't scary. The cell block has cells along each wall, but they don't lock. The tour guide will show us where we can leave our bags.





# Prison Break activity

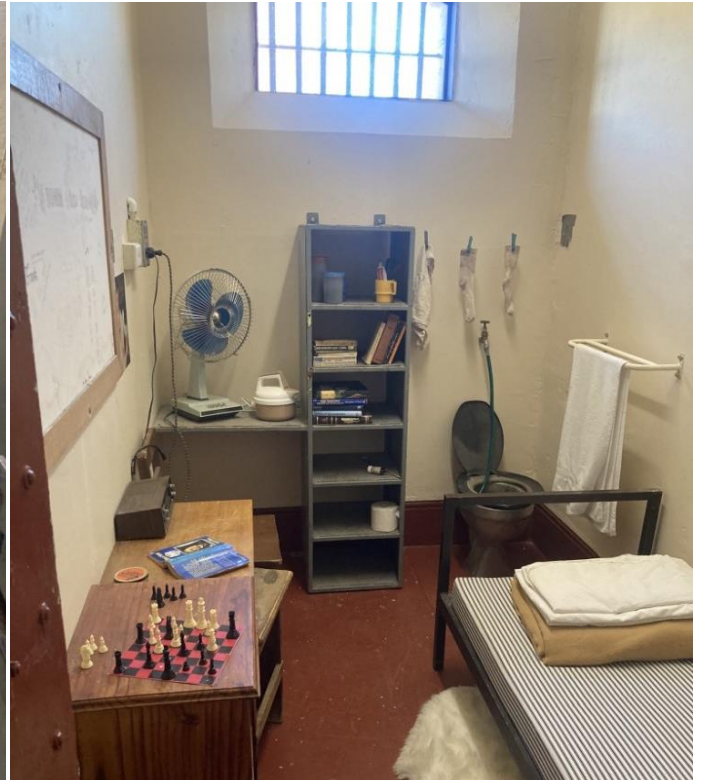
Our tour guide will tell us that a prisoner is planning to escape H Division. This is a pretend game, and it is fun.

I will get a book that I can use to write my answers in. My friends and I will look around H Division for cells with clues inside them. If I need any help, I can ask my teacher or the tour guide.



# The cells

There are many cells in H Division, and I can look inside. They are small but they aren't scary. Some of them have beds and objects in them. No one sleeps in the bed, they are pretend. The toilets don't work.



## Leaving H division

When we are done, we will show our booklets to the guide who will sign the back. Our guide will then take us out of the cell block through a side door.



# Leaving

After the tour is finished, our guide will walk us back to the Warders building where we started the tour. We might get a certificate of completion. I had fun at Pentridge Prison!

