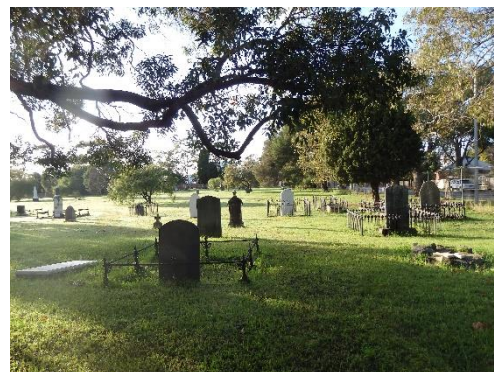


## LOCAL AREA EXCURSION: MANAGEMENT PLAN

### EAST PERTH CEMETERIES

Bronte Street  
East Perth 6004

Telephone: 9321 6088  
Email: [trust@ntwa.com.au](mailto:trust@ntwa.com.au)  
Website: [nationaltrust.org.au/wa](http://nationaltrust.org.au/wa)  
Contact: Education Officer



Please note: This document provides information to assist teachers to complete the *Department of Education Template 1: Local Area Excursion: Proposal for Local Area Excursion* document. No aspects of this excursion are water-based. Certificates of Currency are available on the National Trust website.

#### Educational purpose of excursion

East Perth Cemeteries offers a unique opportunity to explore the first years of European settlement in Western Australia, to explore stories of bravery, tragedy, illness and accident, of success, suffering and loved ones lost. The National Trust delivers education and learning experiences that engage students with their history and heritage to instil a commitment to valuing heritage.

A visit to East Perth Cemeteries supports the Western Australian Curriculum by providing opportunities to develop historical skills, knowledge and understandings; explore cross curriculum priorities; and make links to other learning areas.

#### Educational benefit of excursion

Visiting East Perth Cemeteries gives students a connection with the historic, social, aesthetic and spiritual heritage of Western Australia. Students have the opportunity to:

- develop an interest in and enjoyment of an historic place;
- gain historic knowledge and appreciation;
- practice historical concepts;
- undertake historical inquiry;
- develop empathy and respect;
- further their learning and social skills development; and
- imbed their classroom learning in real world experiences.

Excursion content complements classroom teaching programs and can be tailored to suit individual teacher's needs.

#### Venue / site for the excursion

East Perth Cemeteries are fully fenced and cover approximately five hectares. The grounds are accessible for wheelchairs however not all parts of the Cemeteries have wheelchair access. The toilet has disability access. East Perth Cemeteries are closed to the public throughout the delivery of all education programs. The National Trust will only accept one booking from one school at a time. In the rare event of an unforeseen safety or conservation issue arising, the National Trust reserves the right to vary the property's physical presentation or to close it entirely and deny access. We will work with schools to make alternative arrangements should this eventuate. Activities and rotations are planned and facilitated by experienced National Trust Education Officers and are delivered with child development, learning styles and curriculum outcomes in mind. Consideration is given to the fragility of the venue and the impact of groups of students and as such student numbers are capped. The grounds are regularly tidied but teachers should be aware that the appearance of the graveyard is a reflection of its significance as a colonial cemetery. The National Trust advises school staff to familiarise themselves with the site before bringing a group.

## Risk Assessment

Risk	Mitigating Actions or Alternative arrangements where required
Duration of activities	Teachers are provided with a detailed timetable for their excursion which includes scheduled breaks for morning tea and lunch. The programs are developed by experienced educators with an understanding of children's development. Programs are year specific and provide a balance of hands-on interactive opportunities with more structured activities.
Inclement weather	There is one indoor space to conduct planned activities if required. The proposed schedule may be adjusted to accommodate weather events, this is managed by National Trust Education Officers.
Temperatures exceeding 38 degrees Celsius	There are no air-conditioning facilities at East Perth Cemeteries. In circumstances of dangerous weather conditions, including extreme heat, East Perth Cemeteries may be closed. We will work with schools to make alternative arrangements should this eventuate.
Special clothing or items required	No special clothing is required but covered shoes and hats are recommended. Long trousers / pants, sunscreen and insect repellent are also recommended. Students will need sufficient food and water for their visit. Students will require a pencil and clipboard.

An evacuation and emergency response plan is in place. In the event of an emergency, school staff and students are required to follow the directions of National Trust staff. There is adequate mobile phone coverage for most carriers and Wi-Fi is available. If required, emergency services will have access to the site. Adult to student ratios will vary according to the needs of students and are left to the discretion of school staff.

Western Australia continues to experience the effects of COVID-19 in the community. Any requirements or mandates as issued by the Government of Western Australia will be complied with. Staff and students that are unwell are asked to refrain from attending the venue.

## Students' Capacity

The National Trust welcomes students from Years 4 - 12. Student numbers are capped to maximise safety and engagement of students. The programs at East Perth Cemeteries have been developed for the learning needs of specific year levels. A tour of the grounds and activities are organised to maximise student engagement and enhance learning outcomes.

A typical excursion takes between two and five hours (with breaks for morning tea and lunch as required) and includes a guided tour of the Cemeteries and related activities. Activities are developed for specific year levels to ensure appropriate engagement and comprehensive curriculum alignment. Some activities can be modified further where additional student needs have been identified and discussed with National Trust Education Officers well in advance of the excursion date.

## Supervisory Team

Duty of care and responsibility for student welfare and behaviour always remains the responsibility of school staff. National Trust Education Officers will lead, demonstrate, perform and present activities but will not undertake any roles in a supervisory context. It is the responsibility of the school to develop a supervisory team that meets their specific requirements. Adult to student ratios will vary according to the needs of students and are left to the discretion of school staff. The school supervisory team must accompany students throughout the visit to actively monitor student welfare and behaviour and intervene as necessary.

The development of appropriate supervision strategies is the responsibility of individual schools. Your group may be divided into smaller groups. National Trust Education Officers will advise how many groups, dependent on the specifics of your booking. It is recommended that you have a minimum of one school supervisor for each group. Accompanying adults may be asked to assist with activities and trips to the bathroom if needed during activities. In line with Department Policy, it is recommended that supervisors not be permitted to take their own children on an excursion, unless the children are members of the student group for whom the excursion is intended. We're unable to accommodate siblings, only students listed on your current role.

National Trust Education Officers will establish a safe environment for all activities and will communicate boundaries and anticipated student movements clearly. Student safety is the sole responsibility of the supervising school teacher. Where inclement weather is expected or experienced National Trust Officers will adjust scheduled activities and locations accordingly.

Identification of excursion participants is the responsibility of the school; however, we require students and school supervisory team members to be easily identified. Name tags may assist in personalising the experience, but their use is at the discretion of the school.

The National Trust advises school staff and accompanying adults to familiarise themselves with the site before bringing a group.

### **Briefing Students and Supervisors**

Duty of care and responsibility for student welfare and behaviour always remains the responsibility of school staff. The school supervisory team must accompany students throughout the visit to actively monitor student welfare and behaviour and intervene as necessary. National Trust Education Officers will establish a safe environment for all activities and will communicate boundaries and anticipated student movements clearly. Evacuation directions are clearly displayed at the venue and are provided with this plan.

In line with Department Policy, it is recommended that accompanying adults are not be permitted to take their own children on an excursion, unless the children are members of the student group for whom the excursion is intended.

Prior to a visit to East Perth Cemeteries, teachers can prepare students for the experience by:

- discussing an appropriate code of conduct and acceptable standards of behaviour for students,
- establishing clear supervision strategies,
- discussing emergency procedures consistent with the emergency response plan for the property and
- talking to students about the heritage value of this venue.

### **Communication Strategy**

It is advisable that school staff collaborate with National Trust staff to identify a central meeting point and communicate this clearly to students at the beginning of the excursion. Each National Trust staff member has a timetable for the day's activities so that the group comes together for breaks, if scheduled, and at the conclusion of the visit. A large bell will be utilised for assembling students at the church.

### **Transport Arrangements**

Transportation to and from the venue is the responsibility of the school. There is no onsite parking. Metered parking is available on Bronte Street. Please read signage carefully, street parking is managed by City of Perth and is subject to availability and payment. Rangers do regular patrols and will issue fines where appropriate. The National Trust accepts no responsibility for transport to, from or between venues. Vehicles are parked at own risk.

### **Emergency Response Planning**

An evacuation plan is included with this management plan. Limited first aid supplies are available onsite; it is recommended schools bring their own first aid kit, the provision of first aid will be the responsibility of school staff. Students requiring specific medications, including EpiPens, must bring their own and school staff will be responsible for their management and administering any medications for students.

Fire extinguishers are available, their locations are identified on the evacuation plan. Emergency services can be contacted on 000 and there is adequate access to the site. There is generally good mobile phone coverage onsite and Wi-Fi is available. If staff at school need to contact National Trust Education Officers or school staff at East Perth Cemeteries they can telephone 9321 6088.

### Working with Children Checks

All National Trust Education Staff hold current Working with Children Checks and comply with all obligations. Cards may be sighted upon request.

### Detailed Cost of the Excursion

The National Trust charges a set fee per student for a half or full day excursion, with a minimum fee applicable. Prices quoted are inclusive of GST. Fees charged by the National Trust include all activities, craft materials, worksheets, booklets, games and resources as required for the specific program booked. Schools will receive an invoice after their excursion, the National Trust will only charge for the number of students that attend on the day of your excursion. Staff and parents that accompany a school group are welcome and are free of charge. A minimum charge per group is applicable when numbers fall below the threshold.

### External Providers

The National Trust of Western Australia employs a team of experienced professional staff for the coordination and delivery of curriculum aligned programs. National Trust Education Officers will lead, demonstrate, perform and present activities but will not undertake any roles in a supervisory context. Certificates of currency are available on the National Trust website.

#### General Liability

Insurer: RiskCover

Amount: \$800 million in any one occurrence

#### Professional Liability

Insurer: RiskCover

Amount: \$300 million in any one occurrence

### Cancellations

The National Trust will endeavour to give 24 hours notice if your excursion needs to be cancelled due to unforeseen circumstances, including damage to the property.

The National Trust appreciates 24 hours notice if the school needs to cancel due to weather or unforeseen circumstances. Same day cancellations and failure to attend may incur a minimum charge.

In the event of a cancellation our staff will work with your school to reschedule where possible.

**This information is effective from 1<sup>st</sup> March 2023**

# EMERGENCY EVACUATION PLAN

## EAST PERTH CEMETERIES

BRONTE STREET  
EAST PERTH, WA 6004

**DIAL 000**  
**FOR LIFE THREATENING**  
**EMERGENCIES**

For all other situations, please call  
National Trust Head Office  
**08 9321 6088**

### SAFETY PROCEDURES

For your safety, make sure you know the location of your nearest Emergency Exit. Ensure your exit routes remain clear at all times.

### EVACUATION PROCEDURES

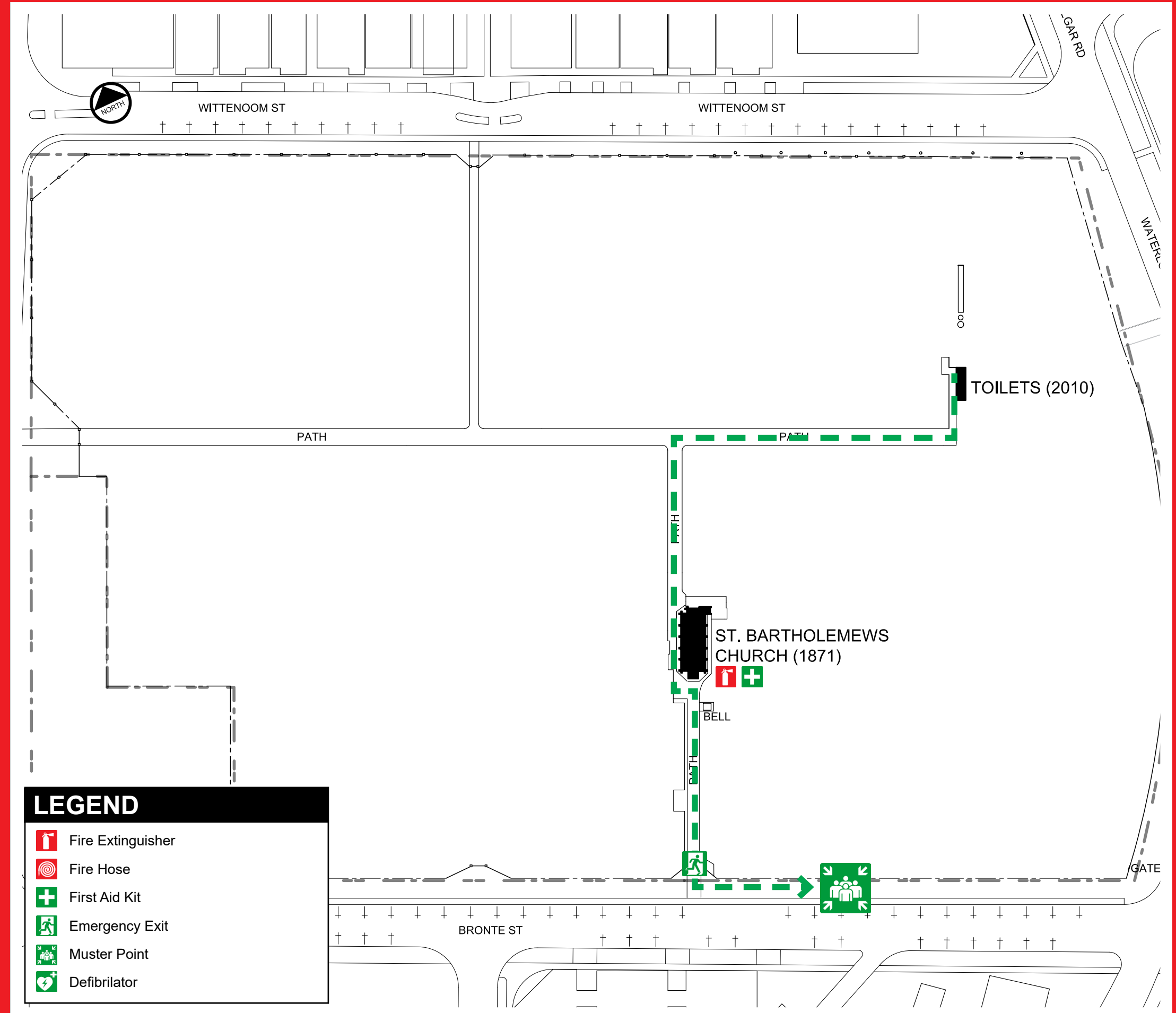
- If possible, ALERT other occupants in your area and commence evacuation of the building using the nearest safe emergency exit.
- Remain calm
- Follow instructions from Wardens, Security and Emergency Service Personnel
- Move directly to the designated Muster Point
- Do not re-enter the building until advised it is safe to do so.

### FIRE PROCEDURES

- Fire extinguishers and fire hoses are to be used only by those who have received the appropriate training. Do not take any unnecessary risks or attempt to fight a fire larger than yourself.

### MEDICAL EMERGENCY PROCEDURES

- For life threatening emergencies, Dial 000 immediately
- Give your Name, Location, Number of people involved & details of emergency
- Render assistance where possible and safe to do so.



# EMERGENCY EVACUATION PLAN

## EAST PERTH CEMETERIES

BRONTE STREET  
EAST PERTH, WA 6004

**DIAL 000**  
**FOR LIFE THREATENING**  
**EMERGENCIES**

For all other situations, please call  
National Trust Head Office  
**08 9321 6088**

### SAFETY PROCEDURES

For your safety, make sure you know the location of your nearest Emergency Exit. Ensure your exit routes remain clear at all times.

### EVACUATION PROCEDURES

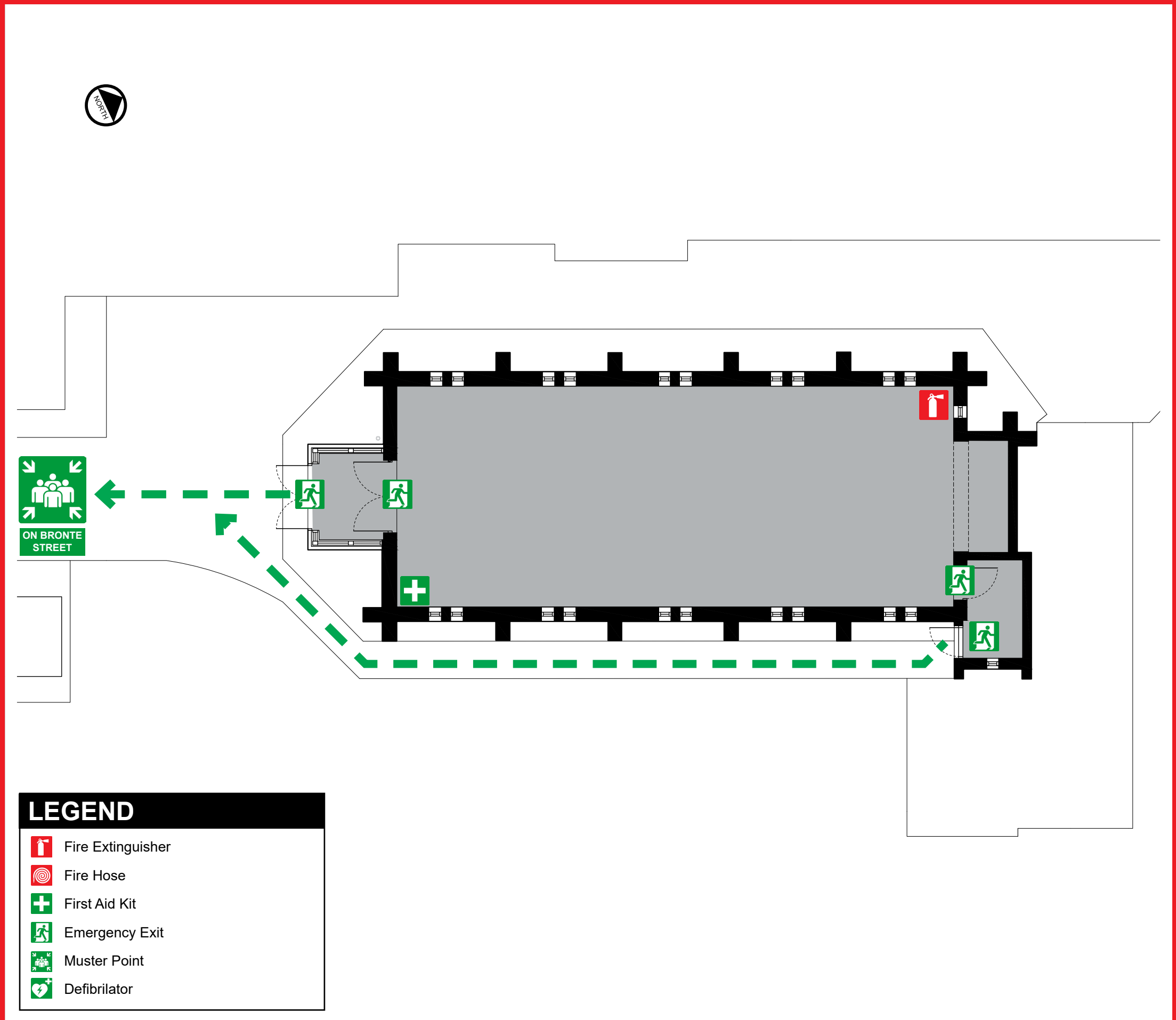
- If possible, ALERT other occupants in your area and commence evacuation of the building using the nearest safe emergency exit.
- Remain calm
- Follow instructions from Wardens, Security and Emergency Service Personnel
- Move directly to the designated Muster Point
- Do not re-enter the building until advised it is safe to do so.

### FIRE PROCEDURES

- Fire extinguishers and fire hoses are to be used only by those who have received the appropriate training. Do not take any unnecessary risks or attempt to fight a fire larger than yourself.

### MEDICAL EMERGENCY PROCEDURES

- For life threatening emergencies, Dial 000 immediately
- Give your Name, Location, Number of people involved & details of emergency
- Render assistance where possible and safe to do so.





## LOCAL AREA EXCURSION: MANAGEMENT PLAN

### PENINSULA FARM

2A Johnson Road  
Maylands 6051

Telephone: 9321 6088

Email: [trust@ntwa.com.au](mailto:trust@ntwa.com.au)

Website: [nationaltrust.org.au/wa](http://nationaltrust.org.au/wa)

Contact: Education Officer



Please note:

This document provides information to assist teachers to complete the *Department of Education Template 1: Local Area Excursion: Proposal for Local Area Excursion* document. No aspects of this excursion are water-based. Certificates of Currency are available on the National Trust website.

### Educational purpose of excursion

As the site of one of the first farms in the Swan River Colony and as one of the earliest extant residences in the metropolitan area, Peninsula Farm offers a unique opportunity to explore the first years of European settlement in Western Australia. The National Trust delivers education and learning experiences that engage students with their history and heritage to instil a commitment to valuing heritage.

A visit to Peninsula Farm supports the Western Australian Curriculum by providing opportunities to develop historical skills, knowledge and understandings; explore cross curriculum priorities; and make links to other learning areas.

### Educational benefit of excursion

Visiting Peninsula Farm gives students a connection with the historic, social, aesthetic and spiritual heritage of Western Australia. Students have the opportunity to:

- develop an interest in and enjoyment of an historic place;
- gain historic knowledge and appreciation;
- practice historical concepts;
- undertake historical inquiry;
- develop empathy and respect;
- further their learning and social skills development; and
- imbue their classroom learning in real world experiences.

Excursion content complements classroom teaching programs and can be tailored to suit individual teacher's needs.

### Venue / site for the excursion

In addition to the historic building, the grounds comprise of two expansive lawn areas and there are two indoor spaces that are utilised by school groups as required. The grounds are accessible for wheelchairs however not all parts of the building have wheelchair access. A public toilet has limited disability access. Whilst the property is located beside the Swan River, this is not a water-based excursion. It should be noted there is a café onsite that is open to the general public. Public walking and bicycle paths run alongside the property. Peninsula Farm is closed to the public throughout the delivery of all education programs. The National Trust will only accept one booking from one school at a time. In the rare event of an unforeseen safety or conservation issue arising, the National Trust reserves the right to vary the property's physical presentation or to close it entirely and deny access. We will work with schools to make alternative arrangements should this eventuate. Activities and rotations are planned and facilitated by experienced National Trust Education Officers and are delivered with child development, learning styles and curriculum outcomes in mind. Consideration is given to the fragility of the venue and the impact of groups of students and as such student numbers are capped. The National Trust advises school staff to familiarise themselves with the site before bringing a group.

## Risk Assessment

Risk	Mitigating Actions or Alternative arrangements where required
Proximity to the Swan River	This is not a water-based excursion. There is a natural boundary created by the landscape along the river. Boundaries are clearly explained to students upon arrival. Sight lines are generally unobstructed to facilitate adequate supervision by school staff.
Duration of activities	Teachers are provided with a detailed timetable for their excursion which includes scheduled breaks for morning tea and lunch. The programs are developed by experienced educators with an understanding of children's development. Programs are year specific and provide a balance of hands-on interactive opportunities with more structured activities.
Inclement weather	There are sufficient indoor spaces to conduct all planned activities if required. The proposed schedule may be adjusted to accommodate weather events, this is managed by National Trust Education Officers. A covered verandah provides shelter during breaks.
Temperatures exceeding 38 degrees Celsius	There are no air-conditioning facilities at Peninsula Farm. In circumstances of dangerous weather conditions, including extreme heat, Peninsula Farm may be closed. We will work with schools to make alternative arrangements should this eventuate.
Special clothing or items required	No special clothing is required but covered shoes and hats are recommended. Students will need sufficient food and water for their visit. Students will require a pencil and clipboard. A tarpaulin, picnic rug or similar is recommended for students sitting on the ground.

An evacuation and emergency response plan is in place. In the event of an emergency, school staff and students are required to follow the directions of National Trust staff. There is adequate mobile phone coverage for most carriers and Wi-Fi is available. If required, emergency services will have access to the site. Adult to student ratios will vary according to the needs of students and are left to the discretion of school staff.

Western Australia continues to experience the effects of COVID-19 in the community. Any requirements or mandates as issued by the Government of Western Australia will be complied with. Staff and students that are unwell are asked to refrain from attending the venue.

## Students' Capacity

The National Trust welcomes students from Years 1 - 6. Student numbers are capped to maximise safety and engagement of students. The programs at Peninsula Farm have been developed for the learning needs of specific year levels. A tour of the house and activities are organised in rotation so only small groups of students are in the house at one time.

A typical excursion takes between two and five hours (with breaks for morning tea and lunch as required) and includes a guided tour of the house and related activities. Activities are developed for specific year levels to ensure appropriate engagement and comprehensive curriculum alignment. Some activities can be modified further where additional student needs have been identified and discussed with National Trust Education Officers well in advance of the excursion date.

## Supervisory Team

Duty of care and responsibility for student welfare and behaviour always remains the responsibility of school staff. National Trust Education Officers will lead, demonstrate, perform and present activities but will not undertake any roles in a supervisory context. It is the responsibility of the school to develop a supervisory team that meets their specific requirements. Adult to student ratios will vary according to the needs of students and are left to the discretion of school staff. The school supervisory team must accompany students throughout the visit to actively monitor student welfare and behaviour and intervene as necessary.



The development of appropriate supervision strategies is the responsibility of individual schools. Your group may be divided into smaller groups. National Trust Education Officers will advise how many groups, dependent on the specifics of your booking. It is recommended that you have a minimum of one school supervisor for each group. Accompanying adults may be asked to assist with games, craft activities and trips to the bathroom if needed during activities. In line with Department Policy, it is recommended that supervisors not be permitted to take their own children on an excursion, unless the children are members of the student group for whom the excursion is intended. We're unable to accommodate siblings, only students listed on your current role.

National Trust Education Officers will establish a safe environment for all activities and will communicate boundaries and anticipated student movements clearly. Where inclement weather is expected or experienced National Trust Officers will adjust scheduled activities and locations accordingly.

Part of your rotation of activities may include a walk around the nearby precinct. This is outside the boundary of Peninsula Farm. The walk is embedded in the history of the place and the community and enhances students' understanding of the significance of the place. National Trust Education Officers will provide directions and relevant information which enriches student learning. The walk involves publicly accessible areas including, but not limited to, parks, footpaths, street verges, bus stops, walkways and roads. Student safety is the sole responsibility of the supervising schoolteacher. Discretion by school staff should be used when determining the safest place to cross streets and move students around the community. If your excursion includes a walk you will be advised prior to your excursion.

Where inclement weather is expected or experienced National Trust Officer's will adjust scheduled activities and locations accordingly.

Identification of excursion participants is the responsibility of the school; however, we require students and school supervisory team members to be easily identified. Name tags may assist in personalising the experience, but their use is at the discretion of the school.

The National Trust advises school staff and accompanying adults to familiarise themselves with the site before bringing a group.

### **Briefing Students and Supervisors**

Duty of care and responsibility for student welfare and behaviour always remains the responsibility of school staff. The school supervisory team must accompany students throughout the visit to actively monitor student welfare and behaviour and intervene as necessary. National Trust Education Officers will establish a safe environment for all activities and will communicate boundaries and anticipated student movements clearly. Evacuation directions are clearly displayed at the venue and are provided with this plan.

In line with Department Policy, it is recommended that accompanying adults are not be permitted to take their own children on an excursion, unless the children are members of the student group for whom the excursion is intended.

Prior to a visit to Peninsula Farm, teachers can prepare students for the experience by:

- discussing an appropriate code of conduct and acceptable standards of behaviour for students,
- establishing clear supervision strategies,
- discussing emergency procedures consistent with the emergency response plan for the property and
- talking to students about the heritage value of this venue.

### **Communication Strategy**

It is advisable that school staff collaborate with National Trust staff to identify a central meeting point and communicate this clearly to students at the beginning of the excursion. Each National Trust staff member has a timetable for the day's activities so that the group comes together for breaks, if scheduled, and at the conclusion of the visit. A small bell may be utilised for gaining attention out of doors.

## Transport Arrangements

Transportation to and from the venue is the responsibility of the school. Parking for cars and a bus is available in the public car park off Johnson Street adjacent to Peninsula Farm. The car park is managed by City of Bayswater. The National Trust accepts no responsibility for transport to, from or between venues. Vehicles are parked at own risk.

## Emergency Response Planning

An evacuation plan is included with this management plan. Limited first aid supplies are available onsite; it is recommended schools bring their own first aid kit, the provision of first aid will be the responsibility of school staff. Students requiring specific medications, including EpiPens, must bring their own and school staff will be responsible for their management and administering any medications for students. A defibrillator is located nearby and is available for use if required.

Fire extinguishers are available, their locations are identified on the evacuation plan. Emergency services can be contacted on 000 and there is adequate access to the site. There is generally good mobile phone coverage onsite and Wi-Fi is available. A landline is available. The telephone is not answered during program delivery, but outgoing calls can be made if necessary. If staff at school need to contact National Trust Education Officers or school staff at Peninsula Farm they can telephone 9321 6088.

## Working with Children Checks

All National Trust Education Staff hold current Working with Children Checks and comply with all obligations. Cards may be sighted upon request.

## Detailed Cost of the Excursion

The National Trust charges a set fee per student for a half or full day excursion, with a minimum fee applicable. Prices quoted are inclusive of GST. Fees charged by the National Trust include all activities, craft materials, worksheets, booklets, games and resources as required for the specific program booked. Schools will receive an invoice after their excursion, the National Trust will only charge for the number of students that attend on the day of your excursion. Staff and parents that accompany a school group are welcome and are free of charge. A minimum charge per group is applicable when numbers fall below the threshold.

## External Providers

The National Trust of Western Australia employs a team of experienced professional staff for the coordination and delivery of curriculum aligned programs. National Trust Education Officers will lead, demonstrate, perform and present activities but will not undertake any roles in a supervisory context. Certificates of currency are available on the National Trust website.

### General Liability

Insurer: RiskCover

Amount: \$800 million in any one occurrence

### Professional Liability

Insurer: RiskCover

Amount: \$300 million in any one occurrence

## Cancellations

The National Trust will endeavour to give 24 hours notice if your excursion needs to be cancelled due to unforeseen circumstances, including damage to the property.

The National Trust appreciates 24 hours notice if the school needs to cancel due to weather or unforeseen circumstances. Same day cancellations and failure to attend may incur a minimum charge.

In the event of a cancellation our staff will work with your school to reschedule where possible.

## This information is effective from 1<sup>st</sup> February 2023

# EMERGENCY EVACUATION PLAN

## PENINSULA FARM

2C JOHNSON RD  
MAYLANDS, WA 6051

**DIAL 000**  
**FOR LIFE THREATENING**  
**EMERGENCIES**

For all other situations, please call  
National Trust Head Office  
**08 9321 6088**

### SAFETY PROCEDURES

For your safety, make sure you know the location of your nearest Emergency Exit. Ensure your exit routes remain clear at all times.

### EVACUATION PROCEDURES

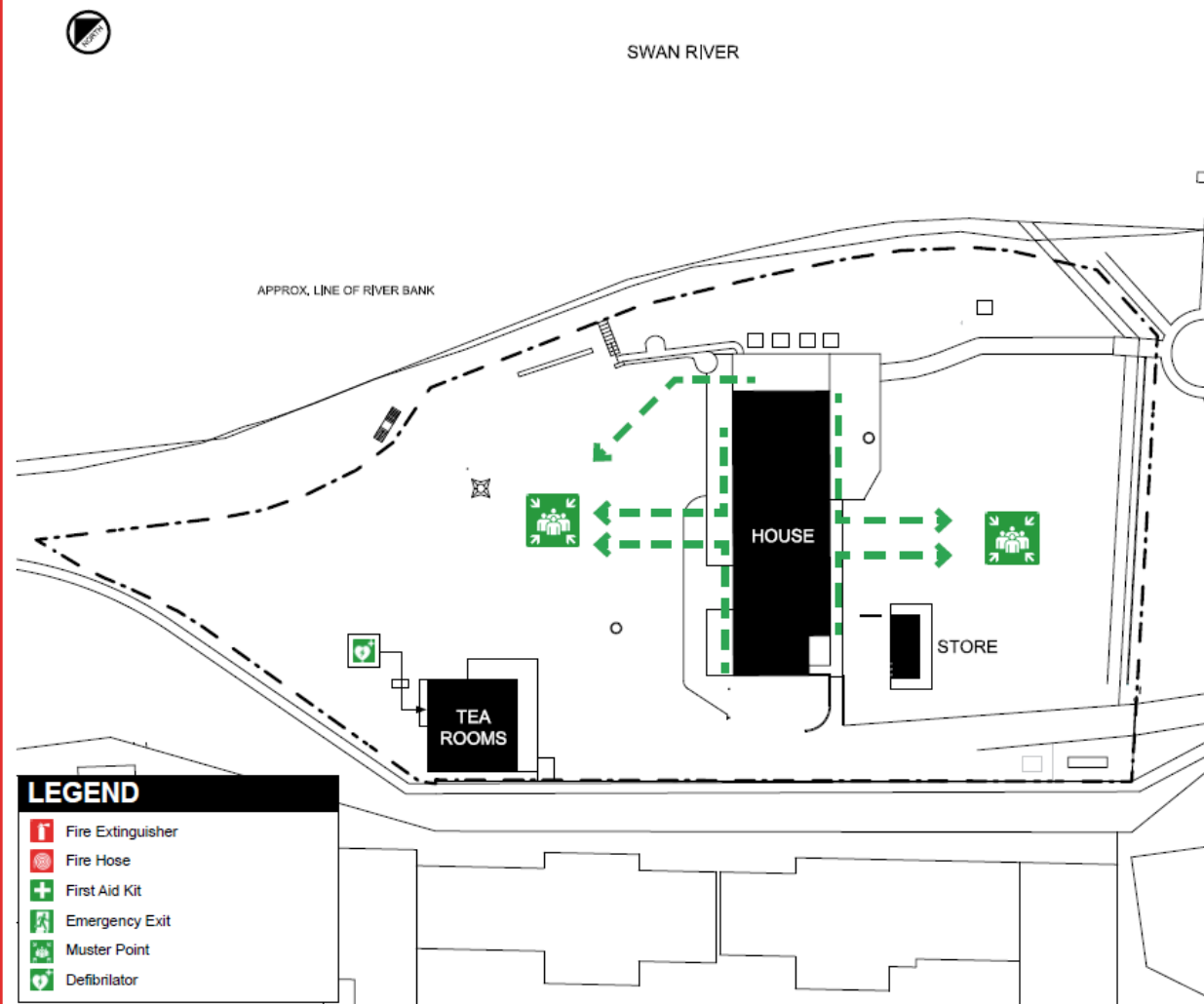
- If possible, ALERT other occupants in your area and commence evacuation of the building using the nearest safe emergency exit.
- Remain calm
- Follow instructions from Wardens, Security and Emergency Service Personnel
- Move directly to the designated Muster Point
- Do not re-enter the building until advised it is safe to do so.

### FIRE PROCEDURES

- Fire extinguishers and fire hoses are to be used only by those who have received the appropriate training. Do not take any unnecessary risks or attempt to fight a fire larger than yourself.

### MEDICAL EMERGENCY PROCEDURES

- For life threatening emergencies, Dial 000 immediately
- Give your Name, Location, Number of people involved & details of emergency
- Render assistance where possible and safe to do so.



# EMERGENCY EVACUATION PLAN

## PENINSULA FARM

2C JOHNSON RD  
MAYLANDS, WA 6051

**DIAL 000**  
FOR LIFE THREATENING  
EMERGENCIES

For all other situations, please call  
National Trust Head Office  
**08 9321 6088**

### SAFETY PROCEDURES

For your safety, make sure you know the location of your nearest Emergency Exit. Ensure your exit routes remain clear at all times.

### EVACUATION PROCEDURES

- If possible, ALERT other occupants in your area and commence evacuation of the building using the nearest safe emergency exit.
- Remain calm
- Follow instructions from Wardens, Security and Emergency Service Personnel
- Move directly to the designated Muster Point
- Do not re-enter the building until advised it is safe to do so.

### FIRE PROCEDURES

- Fire extinguishers and fire hoses are to be used only by those who have received the appropriate training. Do not take any unnecessary risks or attempt to fight a fire larger than yourself.

### MEDICAL EMERGENCY PROCEDURES

- For life threatening emergencies, Dial 000 immediately
- Give your Name, Location, Number of people involved & details of emergency
- Render assistance where possible and safe to do so.

