

SUPPORT



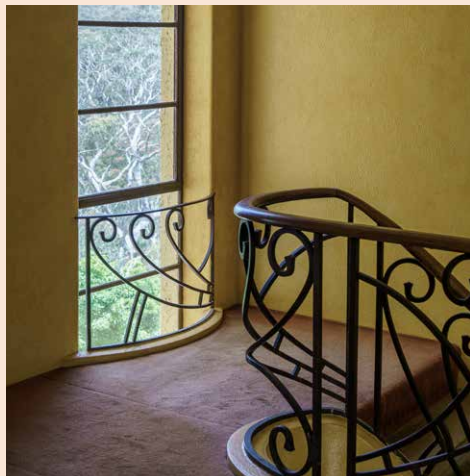
Reawakening an Art Deco Icon

Help the National Trust of Australia (NSW) return elegance to the outstanding home of Everglades. See inside to discover how.





A house of its time and place



Everglades House and Gardens in Leura is one of the true heritage treasures of New South Wales. The National Trust (NSW) welcomes tens of thousands of visitors a year to Everglades spectacular garden and unique inter-war home.

Everglades sits on the traditional lands of the Dharug and Gungdungurra peoples. Despite being one of the premier examples of European modernist garden design in Australia, a large part of the success of the property is the way it engages with and responds to this ancient setting in the Blue Mountains.

Even before Henry Van de Velde's purchase of the property was finalised in 1935, a grand design for Everglades was envisaged. Under Van de Velde's patronage, Paul Sorensen undertook the roles of landscape gardener, architect and furniture designer. The result is a total work of art, which encapsulates a strong design aesthetic that guided all aspects decision making.

Unfortunately, over the years many key details of Everglades have either gone missing, been removed, or become obscured. With this, the clarity of the home's original Art Deco design has been lost.

The National Trust (NSW) Archives contain many original plans and photographs of the way Everglades shone as an elegant, contemporary building. Using this documentation to guide us, we're looking to breathe life and style back into this iconic home, accurately and respectfully.

We invite you to explore this catalogue to better understand Everglades, where it needs conservation, and how your donation can make a difference so future generations can enjoy this special place.

I thank you for your generosity and support.

David Burdon
Director, Conservation

To sponsor a specific element of the project as detailed in this catalogue, contact Philanthropy Manager, Jessie Bodor at jbodor@nationaltrust.com.au or on (02) 9258 1311. Alternatively, you can contribute online at nationaltrust.org.au/donatensw



REVITALISING OUR ROOMS

The uncluttered interior of Everglades is typical of the 1930s and reflects a desire for modern living – a conscious move away from the visually overwhelming interiors of the Victorian era. Beale & Co, Australia's largest piano manufacturer, was hired to create custom timber doors and bespoke furniture throughout the home. Everglades' trailblazing design meant it even featured in Beale & Co's advertising material.

The living room of Everglades contains both original and c.1940s built-in furniture including a settee and cocktail buffet with concealed wireless, a china cabinet and shelving. These need to be repaired to restore their original finish and to prevent further damage to the timber.

Several doors need to be treated, skirting boards repaired, and additional painting is required throughout the house.

Restore bespoke furniture	\$3,000
Restore timber doors and joinery	\$5,000
Repair skirting boards	\$10,000
Repainting	\$15,000
TOTAL ESTIMATED COST	\$33,000



THE DINING ROOM

The dining room is the most elaborate room in the house in terms of decorative embellishment. The moulded plaster friezes featuring stepped wave forms echo the pattern on the external walls of the Everglades squash court.

While the southern wall enjoys a fine view over the mountain landscape, the northern wall features a large relief artwork and fountain by Otto Steen. The relief is a remarkable feature and is a light-hearted look at food gathering.

Necessary work in the dining room includes cleaning, conservation and stabilisation of the relief and investigative steps to determine whether the fountain can be re-activated.

Investigation to re-activate fountain	\$3,000
Repaint surfaces	\$5,000
Conservation of relief	\$10,000
TOTAL ESTIMATED COST	\$18,000



LOOKING TO NATURE

The extensive and large-scale windows of the house allow panoramic views of the gardens and bushland. Over the years, however, when glass has broken it has been replaced with Perspex, a material not befitting the quality of the house.

We need to replace non-original Perspex infills with glass windows to restore the home’s integrity.

Additionally, several windows and doors no longer open.

Repairing them will allow visitors to move through the house and into the garden with ease, and allow fresh mountain air to flow through the house once more.

Install 13 glass windows	\$1,950
Reopen sealed windows and doors	\$2,000
Restore large curved window	\$2,700
TOTAL ESTIMATED COST	\$6,200





ART ABOUNDS

Mr Van de Velde was a keen art collector and Everglades was designed to showcase his collection in the house and gardens.

Existing sculptures require repair and conservation. The front entrance is home to a charming fountain which needs masonry repairs and conservation works to reinstate its plumbing so it can once again delight all those who enter Everglades House.

Reinstate plumbing of statue	\$3,000
Conservation of statue	\$X,XXX
TOTAL ESTIMATED COST	\$X,XXX

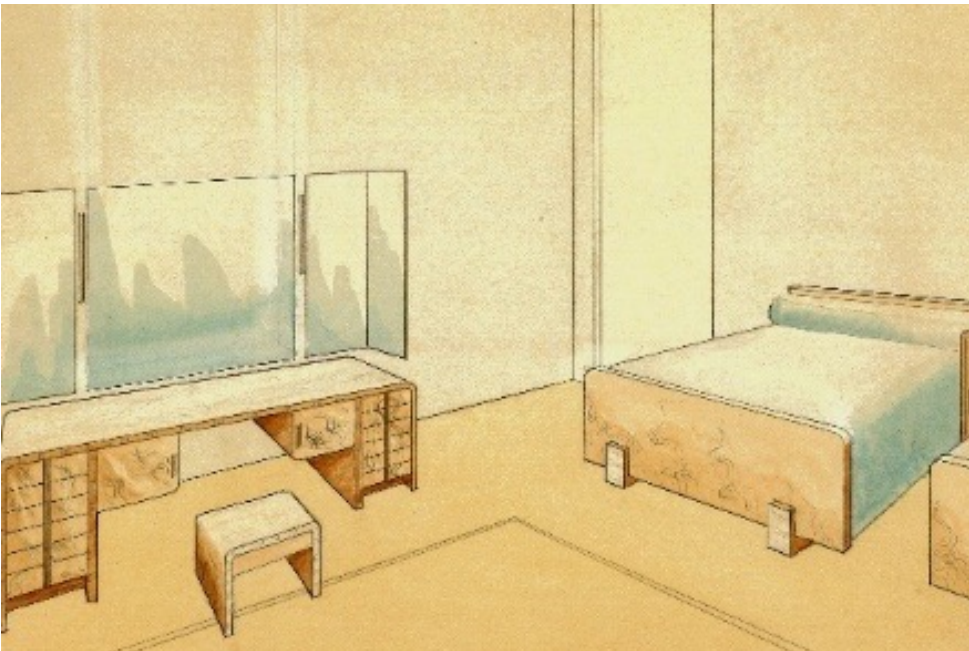


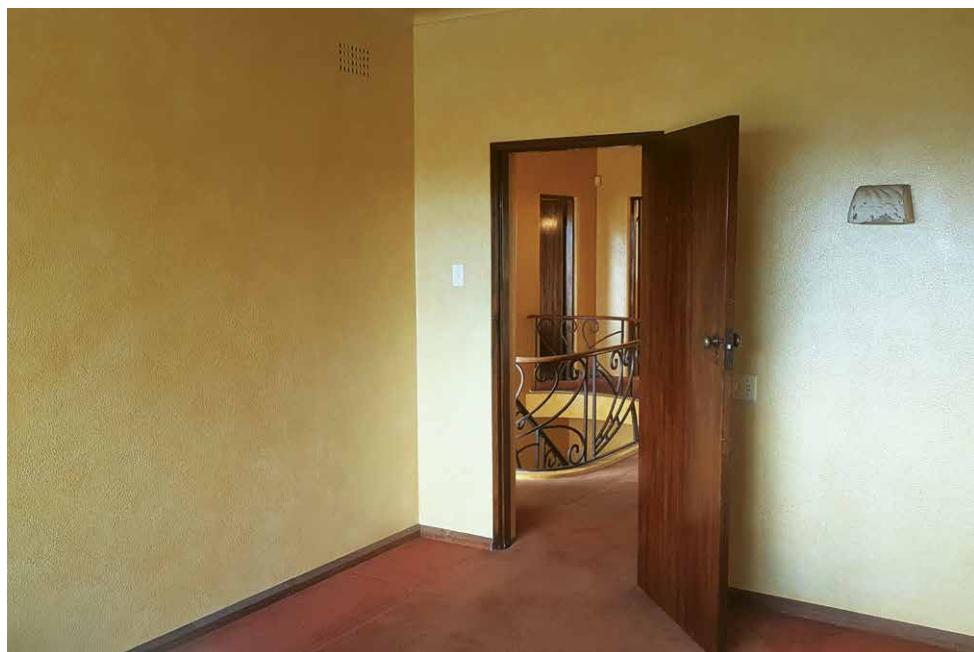
THE FINER DETAILS

Unfortunately, little remains of several bespoke built-in furniture elements made specifically for the bedrooms of the house. Without these period-correct furnishings, these rooms remain near-empty. As a result, we are limited in our ability to create an absorbing place to transport visitors back in time.

Recreating domestic scenes requires examining original Beale & Co. drawings of the modern, yet compact, bedroom furniture. These designs are a distinct reflection of the mid-1930's aesthetic and allow for accurate reconstruction. Visitors will be able to understand and appreciate the space as it was used and furnished and Everglades House can once again astonish visitors with its clarity of design and purpose.

Bedroom suite bed and bedside table	\$10,000
Dressing table, mirror and stool	\$15,000
Bedroom wardrobe	\$10,000
Large bedroom suite bed and bedside table	\$15,000
Large bedroom bench seat, dressing table, mirror and stool	\$20,000
TOTAL ESTIMATED COST	\$70,000





LET THERE BE LIGHT

A distinctive element of Everglades was its very modern electrical lighting system, often recessed into the walls and ceilings of the rooms. The attention to detail and intricacy of this sophisticated lighting system is important to ensure that the house is once again illuminated the way its designers intended.

Currently, electrical faults and unsympathetic fixtures are present throughout the house. The hidden but costly exercise of upgrading electrical wiring will ensure serviceability and safety for the conservation of this extraordinary home.

A number of original 'Bakelite' powerpoints and light switches have been replaced over the years with modern uncharacteristic fittings. We need to repair over twenty

original lights and reinstate ten period-correct fittings using documentary evidence to complete the lighting aesethic at Everglades.

Reinstate 20 Bakelite switches	\$1,500
Reconstruct original light fittings in two rooms	\$3,000
Recommission and repair original lighting	\$10,000
Upgrade electrical circuits in house	\$20,000
TOTAL ESTIMATED COST	\$34,500





SOFT FURNISHINGS

Mr Van de Velde had a successful international career leading a felt and textiles business, manufacturing woollen products, felt slippers and a wide range of textile items. As such, it is appropriate that we ensure the soft furnishings throughout the house are true to its Art Deco origins.

Curtains were a key feature of the original interior design, framing the large windows and softening sparse rooms. Today, five rooms require drapes to be reinstated. Not only will this improve the home's domestic character but also prevent sunlight

Make and install curtains in five rooms	\$7,500
Replace carpet in two rooms	\$10,000
TOTAL ESTIMATED COST	\$17,500



FUTURE-PROOFING EVERGLADES

A highlight for many visitors to Everglades are the separate bathrooms made for Mr and Mrs Van de Velde.

Unfortunately, time has taken its toll on the plumbing fixtures of these rooms, with missing grout and damaged tiles requiring conservation. Several built-in mirrors and cabinets also require repair work to restore their original elements and assist in revitalising the magnificence of the bathrooms.

Restore fittings in bathrooms	\$1,000
Repair built-in cabinets, shelves and mirrors	\$5,000
Repair tiles	\$10,000
TOTAL ESTIMATED COST	\$16,000

Donate today

Only through your support can we restore Everglades House to her former glory. Conservation is costly. Please give generously and help us create an immersive Art Deco experience for future generations to enjoy.

SHOW YOUR SUPPORT

Call Jessie Bodor on (02) 9258 0131

or visit nationaltrust.org.au/donate-nsw



National Trust of Australia (NSW), ABN 82 491 958 802