



## POSITION PAPER

### A VISION FOR NORTH PARRAMATTA

#### HERITAGE SIGNIFICANCE OF NORTH PARRAMATTA

Since its inception in 1944, the National Trust has been deeply involved in the identification, recognition and conservation of the built and landscape heritage of Parramatta. In 1951, the Trust successfully opposed the construction of a speedway around the perimeter of Parramatta Park. The Trust's first Register of 39 historic buildings and sites in NSW, produced in July, 1946, included seven Parramatta properties. On 30 April, 1970 Her Majesty Queen Elizabeth honoured the National Trust by opening Old Government House in Parramatta Park, restored by the Trust and the oldest public building in mainland Australia. 67 properties in North Parramatta have been listed on the National Trust Register, the most recent being the Former Female Factory (1818-1849) in March 2014, although this property was earlier listed as the Parramatta Psychiatric Centre Precinct in 1975. In 2000, the National Trust's Parramatta Branch produced its Parramatta CBD Housing Survey and, in 2010, Parramatta Park's Old Government House and Domain (1788 – 1856) was inscribed on the UNESCO World Heritage List as part of the Australian Convict Sites World Heritage Property.

#### THE CURRENT SITUATION ON NORTH PARRAMATTA'S HERITAGE

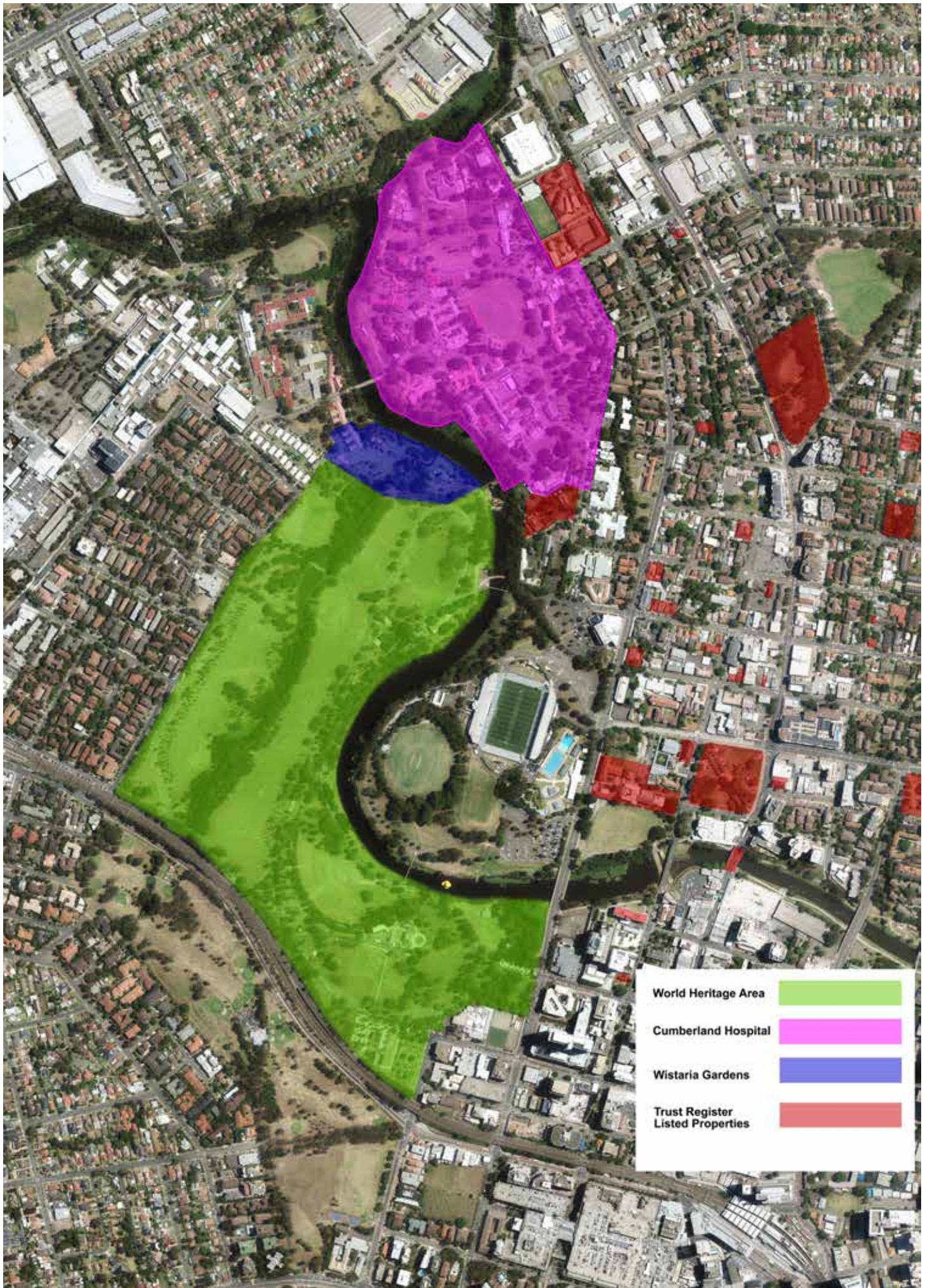
On 28 August 2014, the NSW Government declared a \$2 billion redevelopment of the heritage precinct of North Parramatta, with the area named as a state significant site. The development involves 3900 new apartments in high-rise buildings up to 30-storeys high in a 146 hectare area adjoining a UNESCO World Heritage Area. It could also impact adversely on heritage listed buildings and the landscape of the 1848 Cumberland Hospital, the 1818 Female Factory, the 1866 Wisteria Gardens, the 1835 Parramatta Gaol and the 1841 former Roman Catholic Orphan School. See accompanying map overleaf. The revised scheme has addressed a number of the Trust's concerns by concentrating more of the development beyond the State Heritage Register listed properties and reducing the heights of some buildings and removing other buildings entirely. However new buildings are still proposed for construction in the Female Factory Precinct.

#### NATIONAL TRUST POSITION

- The Trust seeks specific commitments from the State Government and Parramatta City Council that no development will be proposed within or adjoining the World Heritage Area which would adversely impact the World Heritage values of this Area.
- The Trust urges that the archaeology, historic buildings and landscape of the Cumberland Hospital, Female Factory, Wistaria Gardens, Parramatta Gaol and the former Roman Catholic Orphan School be conserved and protected intact and interpreted to serve as a much needed passive recreation area and historic/arts precinct.
- The Trust believes that new residential development should be sited in the precincts to the east of Cumberland Hospital and in the predominantly single-storey industrial area to the east of Parramatta Gaol, near public transport along Church Street and the proposed light rail route.
- The Trust understands that there is considerable high-rise commercial/residential tower development proposed within the Parramatta CBD, which reinforces the importance of conserving the 166 year old Cumberland Hospital/Wistaria Gardens landscape intact for future generations to experience and enjoy.
- Parramatta CBD development must not impact adversely on the World Heritage Area nor should it involve demolition of buildings of historic, aesthetic or architectural significance, including buildings listed on the National Trust Register.
- The Trust's Policies on *Change of Use and Disposal of State Government Heritage Assets and Public Participation in Planning & Assessment*, also have application with regard to development in this area.

#### ACTION TO PROMOTE A VISION FOR NORTH PARRAMATTA

The Trust calls on its members and the community to support the Trust's vision for North Parramatta by contacting their local parliamentarians and Parramatta City Council expressing their concern and urging the retention intact, conservation and interpretation of the archaeology, historic buildings and landscape of the World Heritage Area, Cumberland Hospital and the Female Factory, Wistaria Gardens, Parramatta Gaol and the former Roman Catholic Orphan School.



- World Heritage Area 
- Cumberland Hospital 
- Wistaria Gardens 
- Trust Register Listed Properties 