



65th Annual General Meeting

National Trust of Australia (Victoria)



Agenda Item 1

Welcome

Simon Ambrose, CEO



Housekeeping



Welcome

Kristin Stegley, Chairman

Agenda Item 2

Acknowledgment of Country

Ian Hamm, NTAV Board Director

We acknowledge the Traditional Owners of the different lands of the Kulin Nation on which we all meet today. We pay our respect to Elders past and present, and all Aboriginal people in attendance.



General Business

1. Welcome
2. Acknowledgment of Country
3. Apologies
4. Minutes – receive and confirm minutes of the 64th AGM held on Saturday 21 November 2020
Vote required
5. Business Arising
6. Board Appointments
7. Chairman's Report by Kristin Stegley OAM
8. Annual Report 2020/2021 by Simon Ambrose CEO
9. Honorary Members *Vote required*
10. 66th AGM *Vote required*
11. Other Business & Questions



Agenda Item 3

Apologies

VOTE REQUIRED

Agenda Item 4

Minutes



Mulberry Hill

Agenda Item 5

Business Arising



Newly Elected Directors



Dr Jacqueline Healy
Director since 2011



Peter Lamell
Director since 2016



Jock Murphy
Director since 1977-
1987 & 2015



Ruth Oakley
Director since 2021

Agenda Item 7

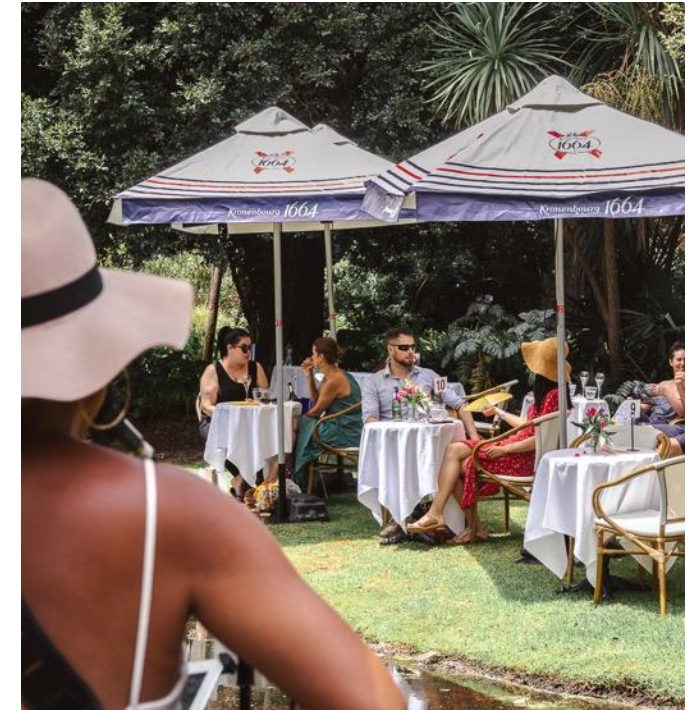
Chairman's Report

Kristin Stegley OAM



Como Reimagined, photo by James Thomas

Gardens



Como Conservation



Como Reimagined



Images by James Thomas





Photo by Simon Schluter, The Age Newspaper

Kinkarakami Project

Images courtesy of University of Melbourne



CostumeLAB at Labassa





150
BARWON PARK
1871-2021

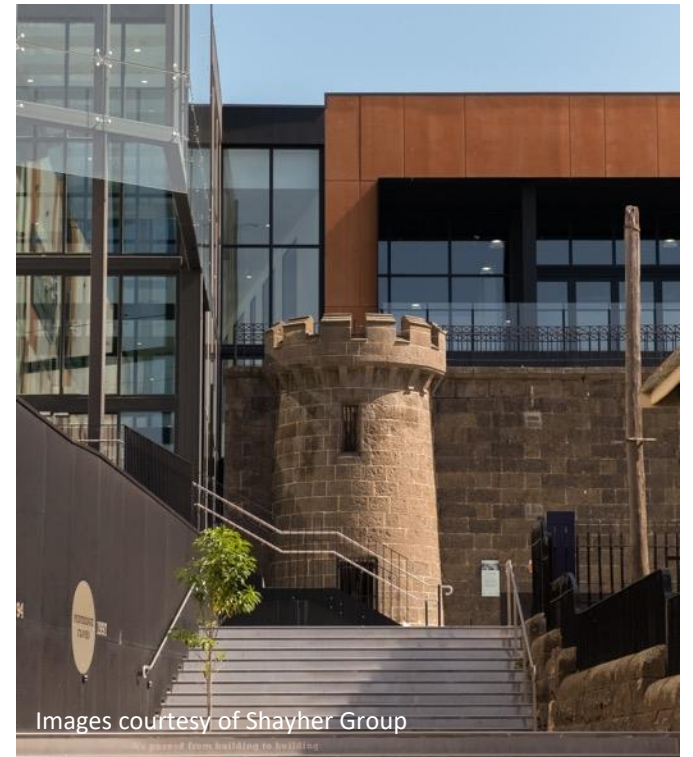
VAULT.





Pentridge

Image courtesy of The Age



Images courtesy of Shayher Group



Donors



Board Directors

Agenda Item 8

Annual Report 2020/2021

Simon Ambrose CEO



Response to COVID-19

- COVID Crisis Working Group lead the organisations OHS response/compliance
- Successfully transitioned our eligible workforce and office-based employees to work from home, implementing new onsite working environments
- Economic support from the JobKeeper scheme guaranteed staff who have been temporarily stood-down were still engaged and receiving financial support
- Development of COVID Safe Plan has ensured that all staff, volunteers, contractors, and patrons remain safe



Need help?

To enter this property...

- 1 Scan the QR code at the entrance
- 2 Show our team your proof of vaccination



Don't have a smartphone?

You will need to show ID and a printed copy of your vaccination status



Please ask our team if you need more information



People & Culture

Mental Health Hub
launched on our Staff
& Volunteer Intranet

Workplace incidents in
2020/2021 remained
low and there was a
decline in the number
recorded

Employee Net
Promoter
Score of
22
Highest ever
recorded

51

Volunteers achieved a Years of Service Award
milestone this year for their valued contributions
across properties, programming and events.



Property Overview

Melbourne Properties

Rippon Lea Estate

Highest visitation of all properties with **28,625 visitors**, including close to 9,000 visiting the *Miss Fisher and the Crypt of Tears* exhibition.

Partnerships with the City of Glen Eira and City of Port Phillip continue to grow, with 26,000 people registered.



Miss Fisher and the Crypt of Tears exhibition, Rippon Lea Estate

Rippon Lea Estate (continued)

A major project to **conserve and interpret Rippon Lea's 19th century drainage system** was completed.

Significant continued support has been received from the Rippon Lea Endowment Fund which will support conservation activity around and in the Ballroom.

Como House

DELWP Living Heritage Grant conservation works were undertaken, including slate roof repairs, guttering and downpipe replacement, paint removal to outbuildings and render repairs.

The ***Doll House: Miniature Worlds of Wonder*** exhibition opened, bringing the world of miniatures and the artists behind them to life. Now extended until 30 January 2022.





Old Melbourne Gaol

Strong visitation over summer, although reduced capacity, visitors enthusiastically came to enjoy the interactive *Cluedo Experience* and *Bending the Bars* exhibition.





Mornington Peninsula

As part of the DELWP Living Heritage Grant Project, preparations for substantial repairs at the **Briars Homestead** are nearly complete. The repairs will ensure that the Homestead can be opened for visitors once again following a long period of closure.

Geelong & Bellarine Peninsula

Barwon Grange and **The Heights** celebrated Geelong Design Week with exhibitions and events.

The Heights partnered with Geelong Experimental Artists to present an installation, and the Geelong & Region Branch hosted an exhibition on James Harrison, honoring the Geelong inventor, credited with inventing the world's first ice making machine in 1854.



James Harrison exhibition at the Heights

Barwon Park

*Planning is underway to celebrate **Barwon Park's 150th anniversary in 2022**, working closely with local community groups.*



A DELWP Living Heritage Grant saw conservation work undertaken to the roof, to ensure the building is watertight and protected into the future. The volunteers have also been busy restoring the floor of the Batson's Wool Shed.

We entered into an agreement with Barwon Water to assist with the reticulation of 20 megalitres of recycled water. This project will assist with the irrigation of the paddocks and pave the way for a more permanent irrigation solution that is cost-effective and sustainable.





Mooramong

Reactivation of the Mackinnon Nature Reserve with the appointment of a part-time Conservation Officer supported by a grant from the Helen Macpherson-Smith Trust, as well as reestablishment of the Reserve Working Group.

A critical milestone was reached in the **Zoos Victoria Guardian Dog – Eastern Barred Bandicoot Trial**, with the release of 20 of the endangered marsupials into the Reserve in November 2020.

Work continued on the asbestos removal and conservation of the Shearers Quarters thanks to grants from both The Kimberley Foundation and The Scobie and Claire Mackinnon Trust.



Port Fairy

Stabilisation works were undertaken to the front stone wall at Captain Mills Cottage thanks to the support of the DELWP Living Heritage Grants.

Gulf Station

Thanks to a DELWP Living Heritage Grant, conservation work to the timber and footings of the Working Horse Stables were completed.

Chiltern

Dow's Pharmacy volunteers have returned to operating regular tours, and the team works towards having the Federal Standard Printing Press opened over summer.

Advocacy Highlights

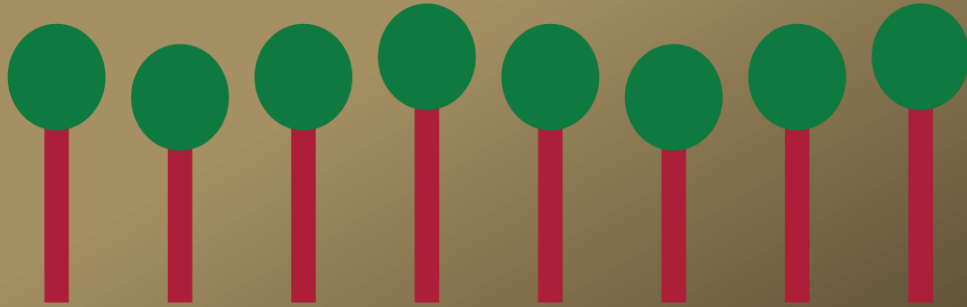
25 Submissions on local heritage issues

19 Submissions on Commonwealth and State heritage issues



8

Trees added to the National Trust Register of Significant Trees



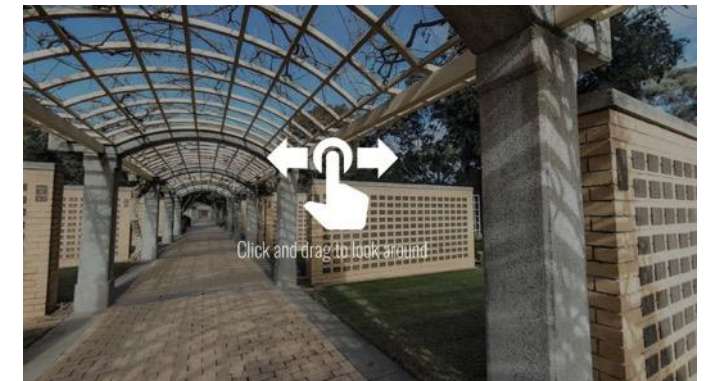
- Launched our inaugural **Climate Action Plan**, supporting the Trust to contribute tangible and meaningful action to address the climate and biodiversity crisis.

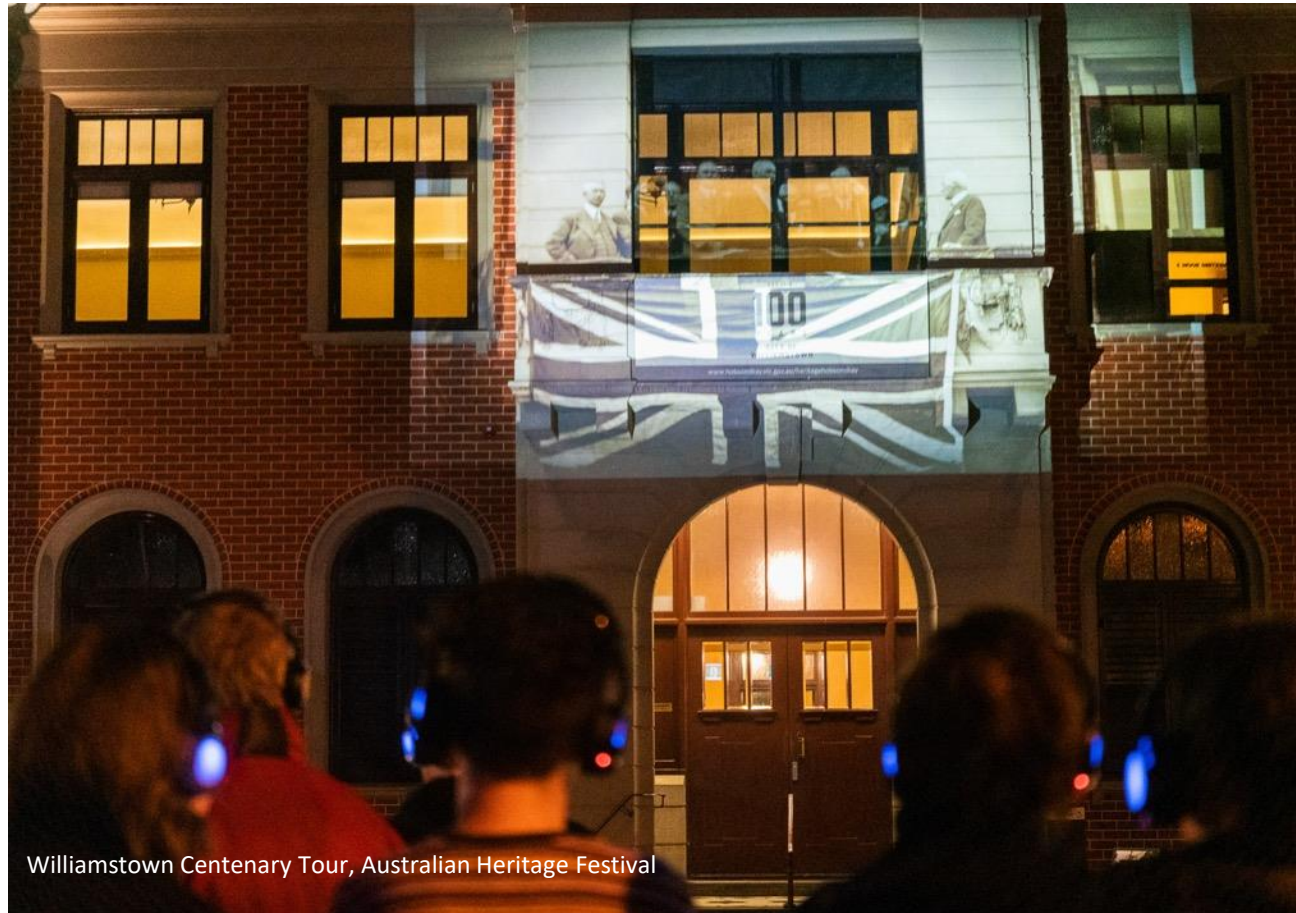


- Launched the *WWII at Home platform*, developed in partnership with the Centre for Architecture Victoria and Open House Melbourne.

The project was funded by the Veterans Branch, Department of Premier & Cabinet, as the flagship project for the state's celebrations of the **75th anniversary of the end of World War II**.

Included historic and contemporary photography, 3D virtual reality, interactive panoramas, videos, and interviews with veterans.





- The **Australian Heritage Festival** took place from 18 April to 2 May 2021, comprising a total of 124 events hosted by 87 organisers.
- The digital delivery of the program was well received, and there was a significant increase in digital events in response to COVID-19 gathering restraints.

Reconciliation

- Submitted our **4th Reconciliation Action Plan** to Reconciliation Australia for endorsement and continued to undertake work to support our Reconciliation goals across the organisation.
- Finalised the **Gulf Station Cultural Values Survey Stage 1 Report**, undertaken by the Wurundjeri Woi Wurrung Cultural Heritage Aboriginal Corporation and funded by the Shire of Yarra Ranges, and commissioned a Cultural Heritage Survey of Barwon Park.





Mills Cottage

Branches

Our Branches continued to lead heritage advocacy in areas across regional Victoria and metropolitan Melbourne, advocating on a broad range of issues.

- ❑ Significant landscape protection (Bass Coast, Portland and Dandenong Ranges)
- ❑ Ballarat Railway Station (Ballarat)
- ❑ Review of the Bendigo Planning Scheme and objections to inappropriate development (Bendigo)
- ❑ Proposed demolition of the Old Beaconsfield Post Office (Casey-Cardinia)
- ❑ Barwon Heads Road Duplication (Geelong & Region)
- ❑ Newport Railway Workshops and Williamstown maritime precinct (Inner-West)
- ❑ Proposed development at Moondah Hall, Mount Eliza (Mornington Peninsula)
- ❑ Promotion of National Trust properties (Port Fairy)
- ❑ Local heritage promotion (Wimmera & Region)

Collections & Cultural Projects



Object records
transferred to our new
Collection Management
System Vernon CMS



Hours of conservation
work completed during
CostumeLAB



Miniature masterpieces
submitted by more than 80
artists for the *Doll House:
Miniature Worlds of
Wonder* exhibition

BENDING THE BARS

Forty years since decriminalisation

NATIONAL TRUST

Displayed at the Old Melbourne Gaol, City Watch House, the exhibition, curated by Andrew Gaynor celebrated the 40th anniversary of the decriminalisation of homosexuality in Victoria.



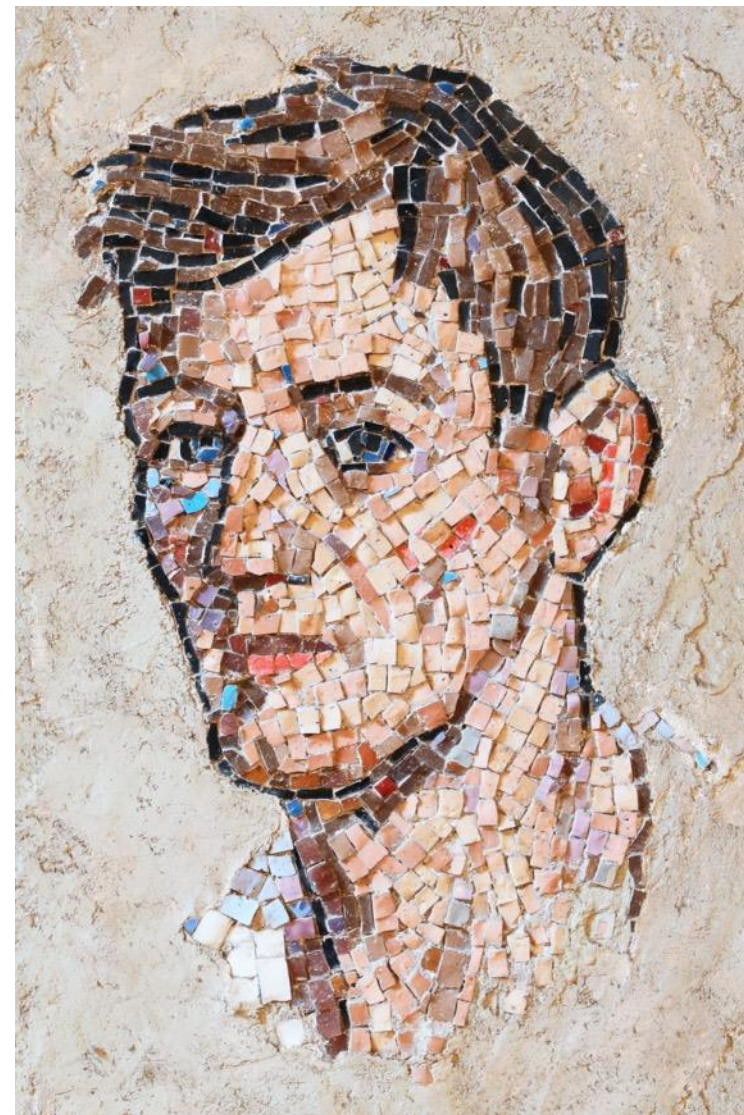
NAPIER WALLER

SOLDIER ARTIST

Works of art from the
Waller House Collection

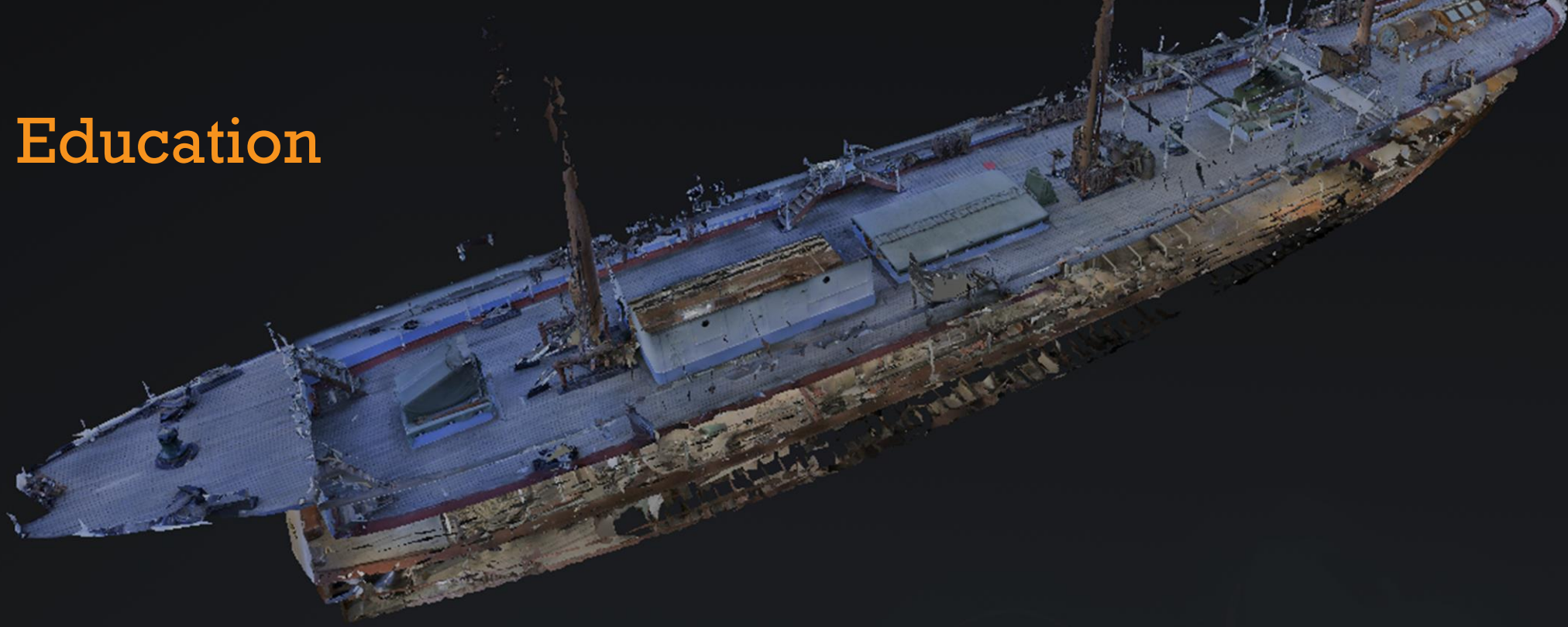
Supported by a grant from the Department of Families, Fairness and Housing, Veterans Branch, the exhibition, curated by Jean McAuslan highlighted the remarkable personal and artistic achievements of Napier Waller.

Promoted Napier Waller's artistic legacy and the Waller House Collection to the local community.



Mosaic study of young man, date unknown, Napier Waller.
Photographed by Vlad Bunyevich.

Education



Polly Woodside, 3D Scan

- 16,000 school children participated in education programs.
- Impacted significantly by COVID-19, programming was shifted to support students learning from home to online experiences.

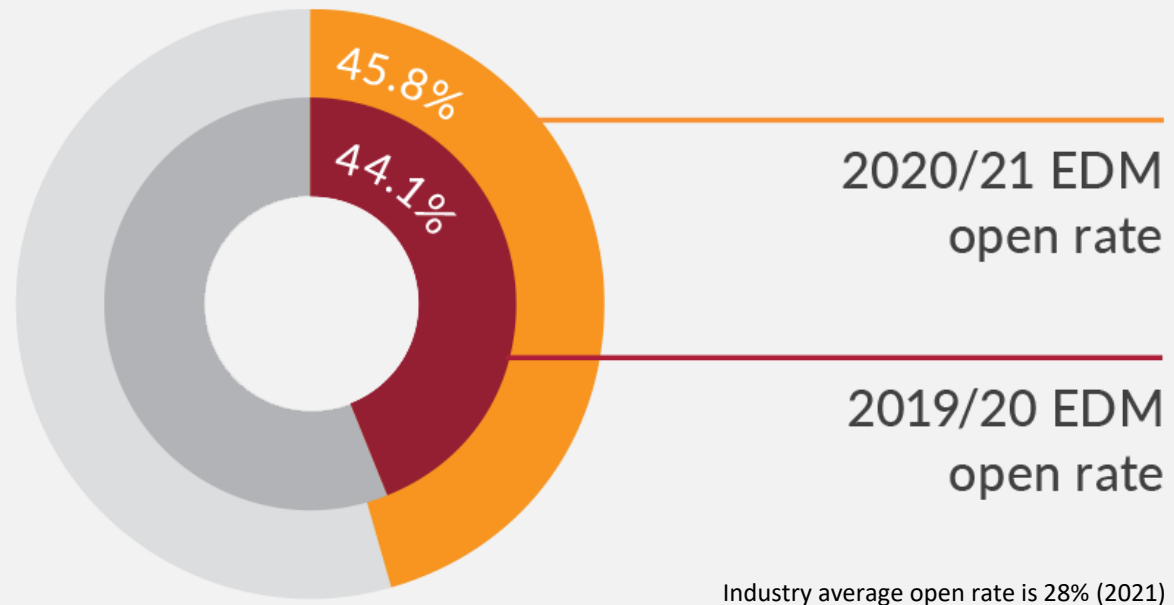
Events

Function/booking	Number of events 2020-2021	Number of events 2019-2020
Wedding ceremonies	60	48
Commercial filming and photography	43	45
Wedding photography	22	48



- Australia's film and television industry was able to continue with activity in both local and international screen production.
- The annual Teddy Bears' Picnic at Rippon Lea Estate took place in a COVID-friendly format, the **Teddy Bears' BBQ & Market**, attracted over 2,000 visitors
- The **Botanica Festival** at Rippon Lea attracted a strong crowd of over 3,000
- Partnered with The Rose St. Artists' Market to form the monthly **Trust Makers' Market**.

Marketing & Communications



Industry average open rate is 28% (2021)



26,100
Email subscribers



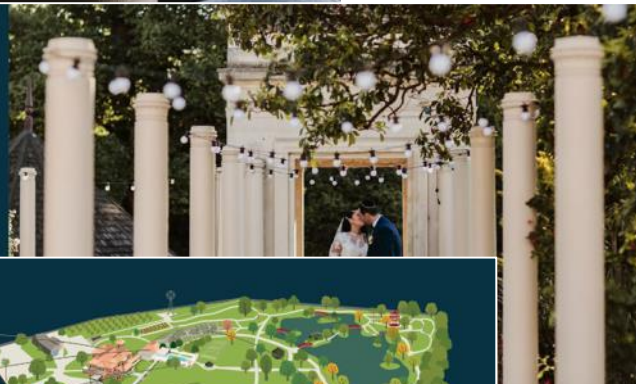
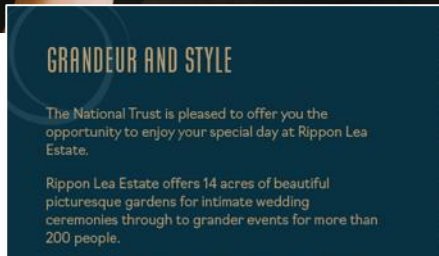
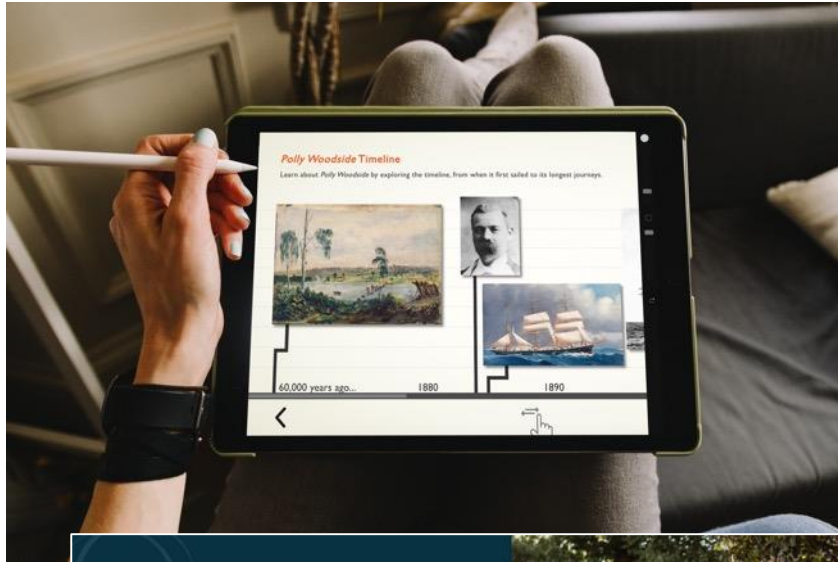
45,641
Social media followers



Christmas Cookalong

- Targeted, creative campaigns were introduced for membership, fundraising and advocacy to generate revenue whilst properties were closed
- Strong engagement across channels saw a **44% increase in our social media following**
- Activity sheets, virtual tours, zoom backgrounds, discussion panels, and online 'cook-alongs' created our 'Heritage at Home' concept





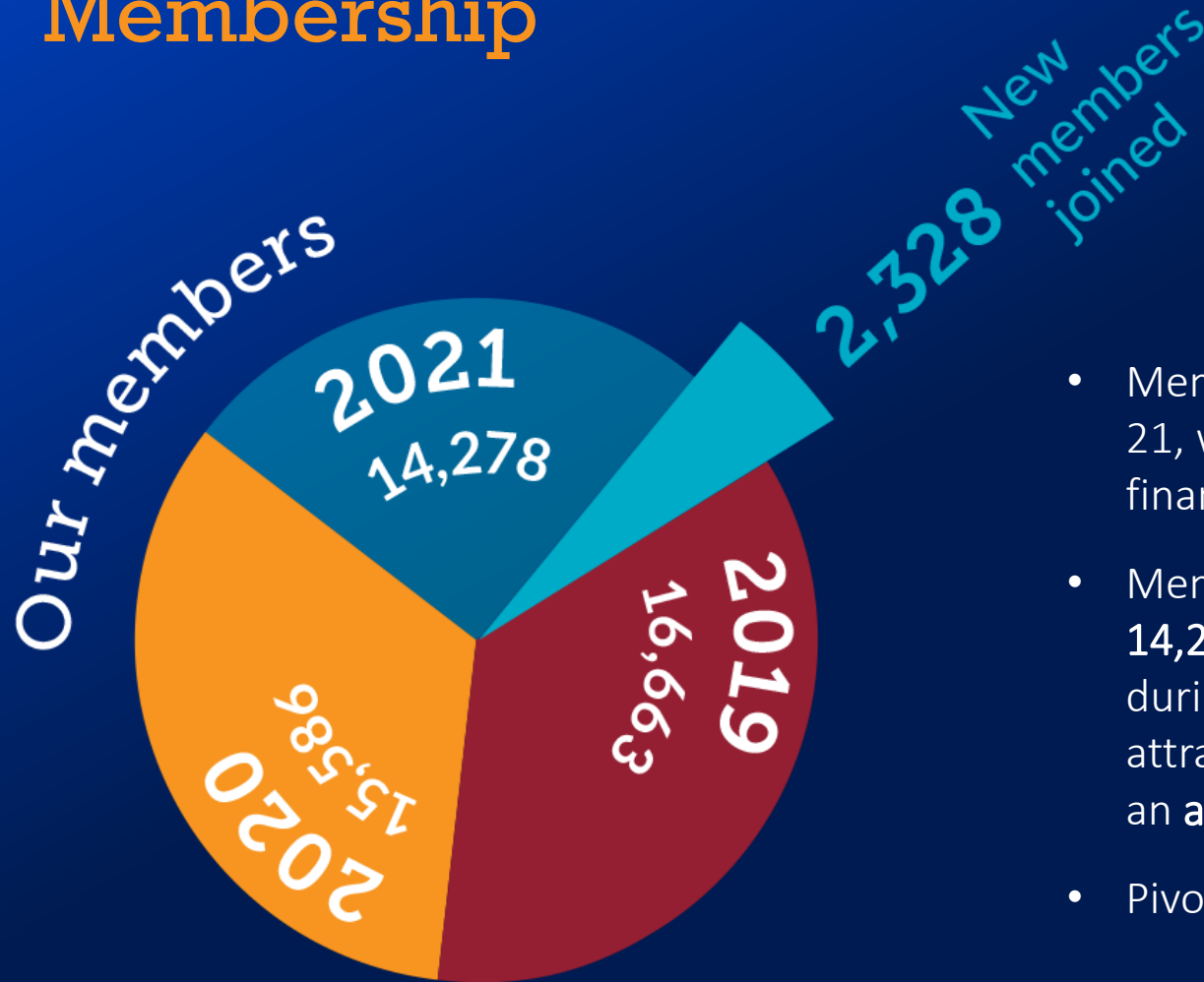
- Creative promotion of weddings, including the new concept of micro-weddings, generated hundreds of new booking leads
- Adaptive re-marketing of education resources when transferred online, including the launch of **Discover Polly Woodside** and the Rippon Lea Estate Virtual Fieldwork program, generated an uplift in education bookings
- Annual **Victorian Tree of the Year** competition reached over 10 million people with major media hits on ABC radio, including nine regional stations.

Fundraising & Philanthropy

- The **Annual Appeal** focused on the National Trust's need to return to our important work of educating, advocating, activating, and nurturing, with our members wholeheartedly supporting the campaign to 'Save Our Past Today'.
- To acknowledge and thank our supporters for their generosity during these unprecedented times, several special events were planned. Unfortunately, due to the intermittent lockdowns and restrictions, these events have been postponed in the short term.



Membership



- Membership financial support has declined during FY20-21, with a 30% decline when compared to the previous financial year
- Membership numbers have **decreased from 15,586 to 14,278** when comparing year on year results. However, during this challenging time we have been able to attract a generous number of new members, welcoming an **additional 2,328** over the past 12 months
- Pivoted from onsite sales to digital based promotions.

Financial Performance

A substantial percentage of our income (over 70%) is generated from people interacting with our properties, and with restrictions across the community due to COVID-19 our business reduction has been significant.

Nevertheless, due to a very good start to the financial year and considerable support for our people from the Federal and State Governments, we have realised a modest result of \$2.985m which includes a non-monetary bequest of \$2.7m.

Our asset capital values have benefited from the national increase in house and land values and some of these have been revalued this year to increase our total net assets value to \$154.5m.



Summer Series at Rippon Lea Estate

Financial Results

Annual results 2020/2021

Total Revenue	\$11,954,035\$
Less expenses	
Operating expenses	\$8,968,943
Profit	\$2,985,092
Other comprehensive income (Revenue gain on heritage & cultural assets)	39,692,508
Total comprehensive income for the year	\$42,677,599



Members can now raise
questions about the
accounts

Honorary Memberships



VOTE REQUIRED

Agenda Item 10

66th AGM

Agenda Item 11

Other Business & Questions





Thank You

