

No 1 Pump Station



Name:

Please note: this is a classroom resource and is not required on a visit to No 1 Pump Station

Copyright NTWA 2020 including photographs

KWL Chart

KNOW	WONDER	LEARNED
What do you know about significant places?	What do you wonder about significant places?	What have you learned about significant places?
What do you know about how people's lives have changed from the past?	What would you like to know about how people's lives have changed from the past?	What have you learned about how people's lives have changed from the past?
What do you know about water and its uses?	What would you like to know about water and its uses?	What have you learned about water and its uses?

Past in the Present

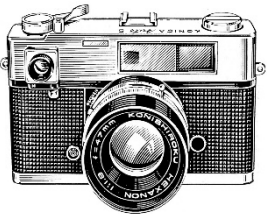
Name of the landmark	Date built	Original purpose of the building	Current purpose or condition of the building	Image – photograph or drawing



Picture Investigation

Glue your photo here

This photo tells me:	It does not tell me:





Water as a Resource

Illustrate two ways water is used at your home, at your school and in your community.

Home		
School		
Community		



Place through Pictures



Brainstorm some enquiry questions about this photograph

What sources could you use to find the answers to your questions?

Water Explorer



After walking around my school I found water in the following places:

Water is used for:

Other places where water is used:

Water access points at school:



I saw water being used responsibly:



I saw water being used irresponsibly:

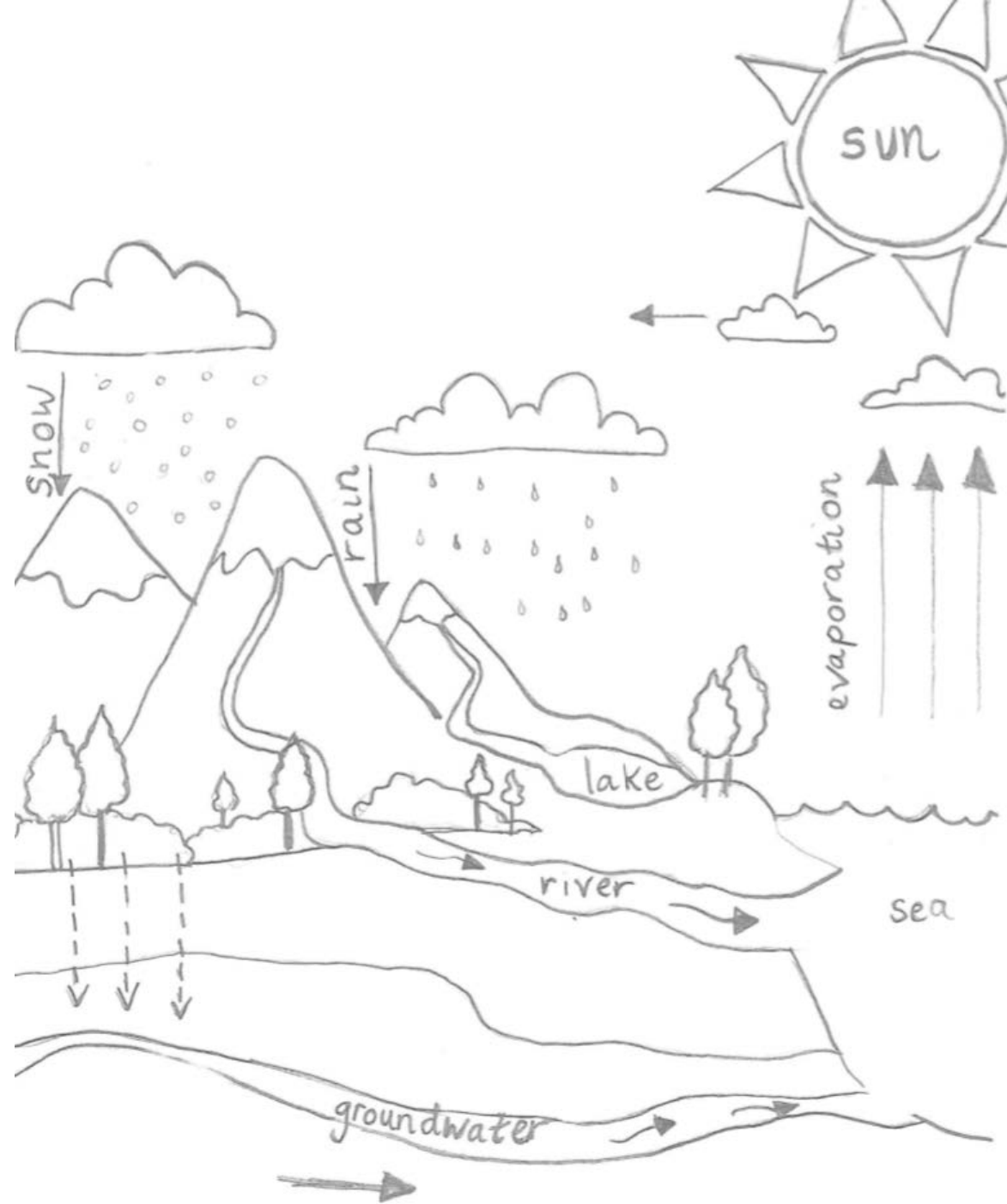


The Water Cycle

The Water Cycle is a continuous natural process in our environment. Water is continually moving around in a _____ between the air, land and sea. When the _____ shines on the sea, _____ air rises up into the air and forms water _____. This process is called evaporation.

As the water vapour cools the tiny microscopic droplets join together forming larger drops that we begin to see as _____. When the drops are large and heavy they fall as rain, hail, sleet or _____. This is called precipitation. Precipitation falls onto the land and into _____. The rivers then flow back to the _____ and the whole process starts again.

vapour	sun	clouds	rivers
circle	snow	warm	sea



Gold and its Uses

Illustrate and label some ways that we use gold in our society.
The first one has been done for you.



Gold is used in electronic devices such as mobile phones

Getting to the Goldfields

Illustrate three ways that people travelled to the goldfields.

--	--	--

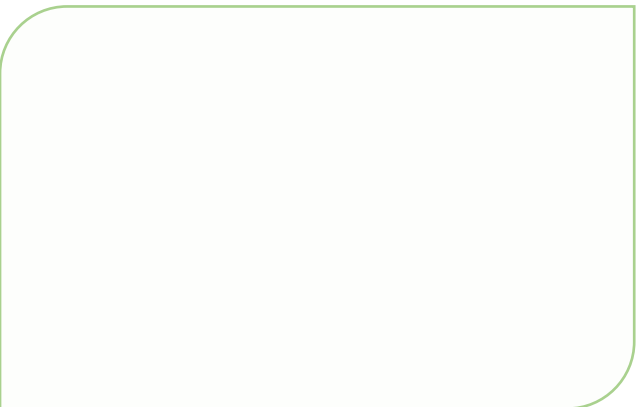
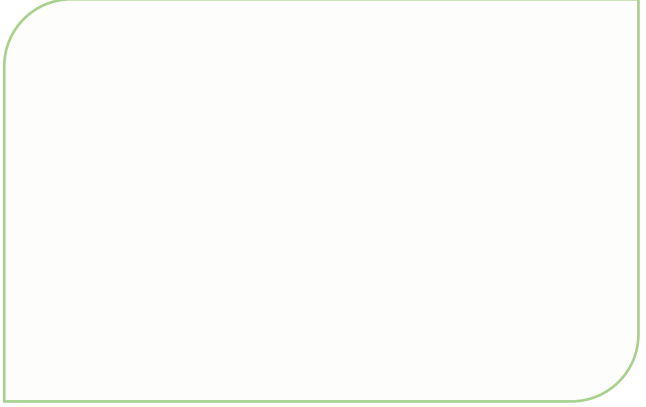
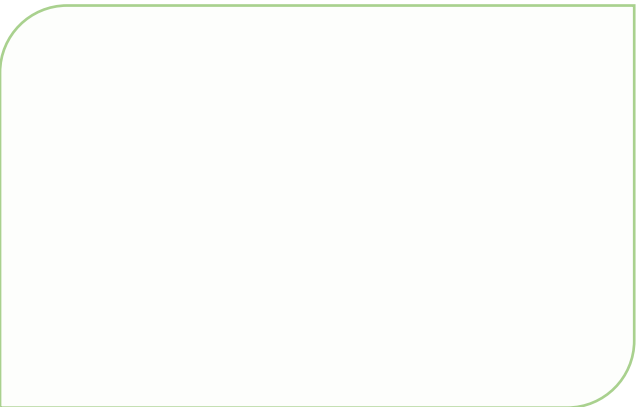
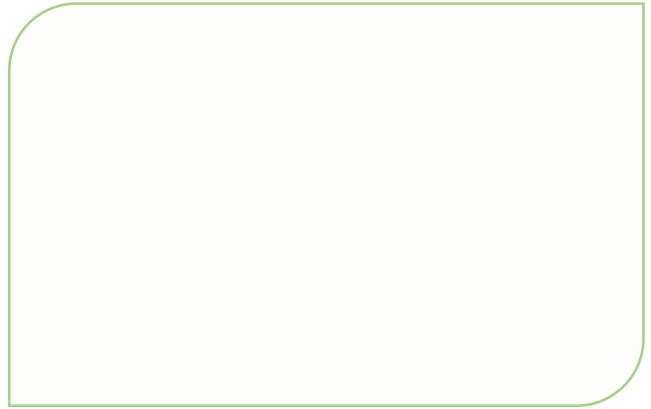
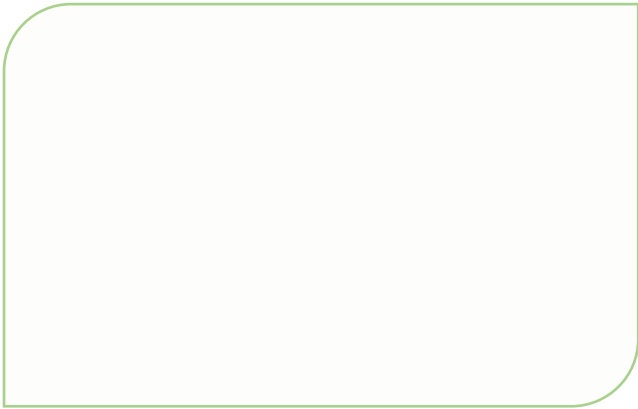
What were some of the difficulties people faced on the journey?

List the essential items to pack if you were going to try your luck on the goldfields?



Life on the Goldfields

Draw some activities of people on the Goldfields.



What is a prospector?

What was life like on the Goldfields?

Simply Significant

What does *significant* mean?

Brainstorm some significant people in your school and community

[illegible]

Choose three significant people in your life. Draw a picture of them and write their name. Write a sentence explaining why they are significant in your life.

1	2	3
----------	----------	----------

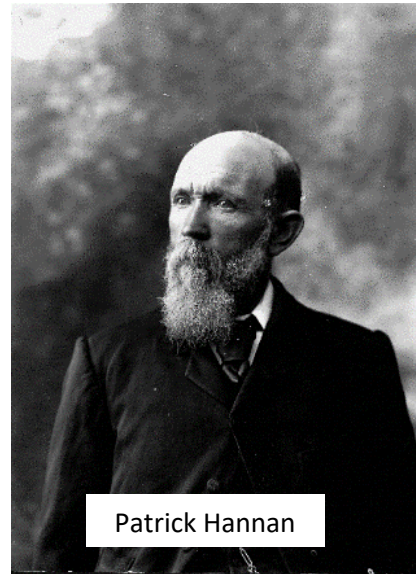


Simply Significant People

These are some of the people connected to Mundaring Weir and the Goldfields Water Supply Scheme.



Sir John Forrest



Patrick Hannan



CY O'Connor



Arthur Bayley



William Ford

In your group, choose one person to research and complete the next page.

Simply Significant People

Name:

Date of birth:

Date of Death:

Family:

Work:

Significant facts:

Other Information:

Find a picture or sketch a portrait of your significant person and glue it here

Changing State

There are three states of matter solid, liquid, and gas. Water can exist in all of these states.

Solid



Liquid



Gas



Draw a diagram to show what happens when water as a liquid is heated.

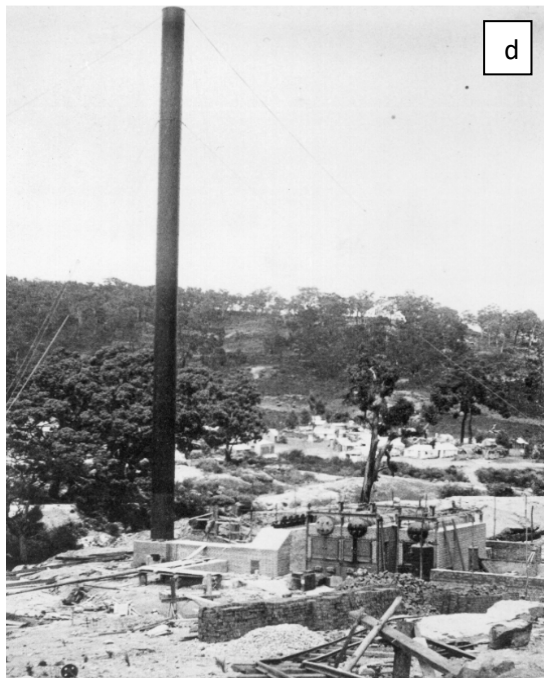
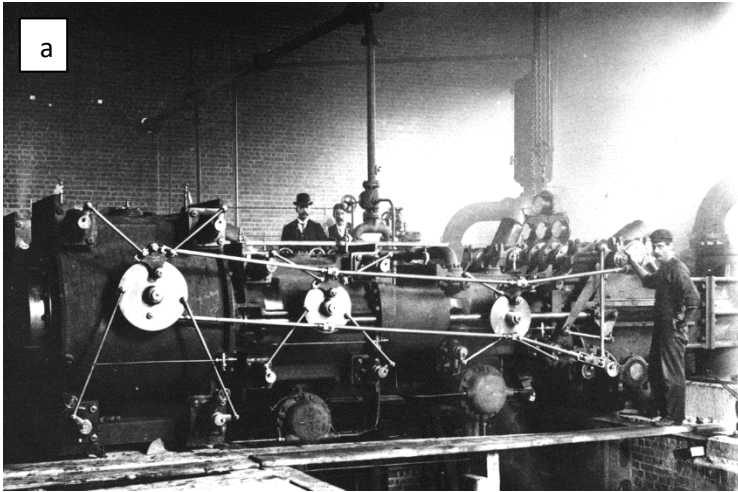
Draw a diagram to show what happens when the solid form of water (ice) is heated.

Predict what would happen if I put my water bottle in a freezer?

Past and Present

Which photos do you think are from the past and which are from the present?

What makes you think this? How can we sequence the photos?



Blank for cutting out timeline

Timeline of GWSS

Cut out the significant events and glue them in the correct order on the next page to make a timeline.

.....

1903

John Forrest
officially opens
the Goldfields
Water Supply
Scheme.

1902

The goldfields
pipeline is
completed.

1896

Forrest
announces to
goldfield
residents that a
water scheme
will be
implemented
and introduces a
bill to raise 2.5
million pounds
for the scheme.

1895

Premier John
Forrest visits the
goldfields to view
the living
conditions and
water situation.
Engineer in chief C
Y O'Connor begins
designs of a water
scheme and
pipeline.

1894

Pumping water to
the Coolgardie
Goldfields is
suggested by 'JST'
in a letter to the
West Australian
newspaper to
address the critical
water shortage.

1901

Western Australia
joins The
Commonwealth of
Australia at
Federation. John
Forrest leaves WA
for Federal
parliament. Criticism
of C Y O'Connor
continues.
Mundaring Weir is
complete.

1899

A rock fault causes
delays of the works
at Mundaring Weir.
Newspapers and
Politicians criticise C
Y O'Connor and his
scheme of
madness.

1893

Paddy Hannan,
Tom Flanagan
and Dan Shea
discover gold at
Hannan's
Kalgoorlie.

1892

Gold is
discovered in
Coolgardie by
Arthur Bayley
and Bill Ford.

1898

Loans for the
Pipeline are
confirmed.
Building works
begin at
Mundaring
Weir.

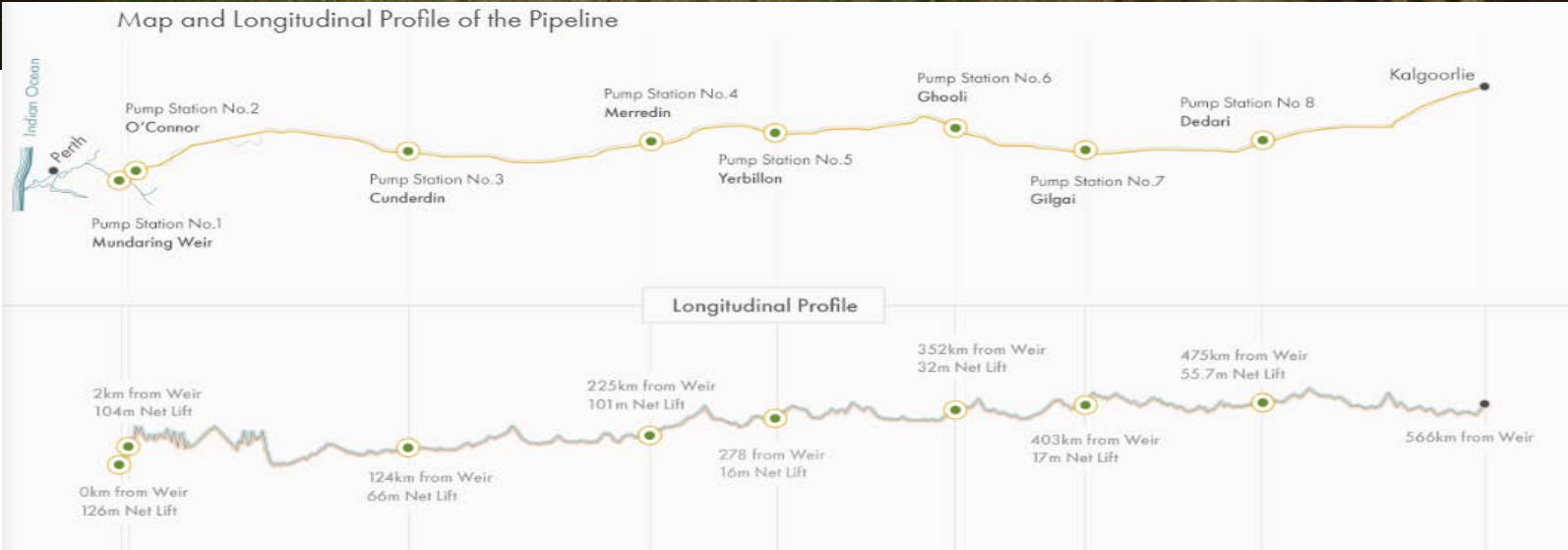
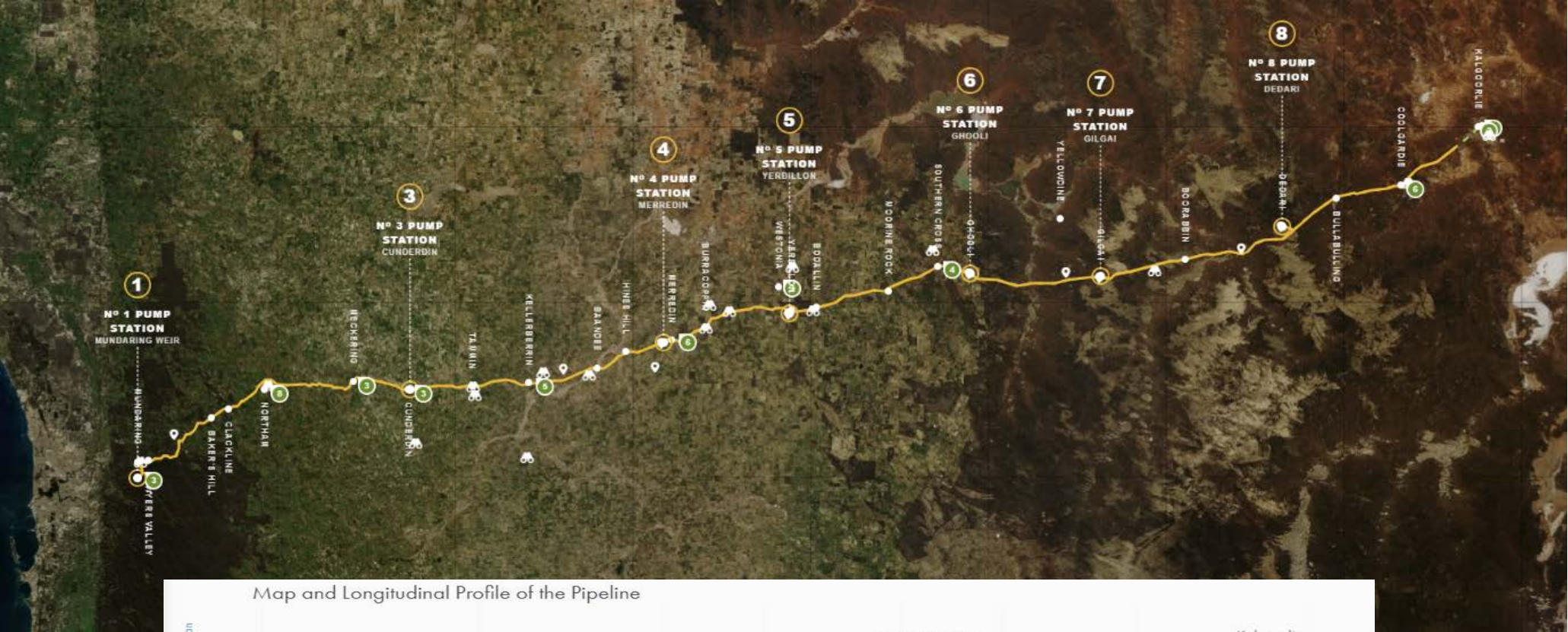
Timeline of the Pipeline

Glue your time line here.



Mapping the Pipeline

Satellite image



Mapping the Pipeline

Investigate one town along the pipeline and find out the following information

Town name	
Distance from Perth	
Date established	
Current population	
Crops or livestock farmed there	
Other industry such as mining or logging	
Unique sights or interesting facts	
What do you think the pipeline has meant for this town?	



Tour of No 1 Pump Station

You are taking your family on a tour of No 1 Pump Station and Mundaring Weir. You will be their guide! What are you going to share with your family? What do you think is significant? Use the pictures to help you decide what you will tell them about.



.....

.....

.....

.....

.....

.....

.....

.....

.....

.....

.....

.....

.....

.....

.....

.....

.....

.....

.....



.....



[illegible]

Then and Now

How have the technologies used on the Goldfields Water Supply Scheme and No 1 Pump Station changed over time?

No 1 Pump Station - Past	No 1 Pump Station - Present
	
<p>.....</p> <p>.....</p> <p>.....</p> <p>.....</p> <p>.....</p>	<p>.....</p> <p>.....</p> <p>.....</p> <p>.....</p> <p>.....</p>

Worth Keeping?

Think about what you have learnt about
No 1 Pump Station and Mundaring Weir.

Do you think this is a significant place?

Is it worth preserving? Why or why not?



.....

.....

.....

.....

.....

.....

.....

.....

.....

.....

.....

.....

.....

.....

.....

.....

.....

.....

.....

.....

.....