

Wonnerup – Collections Packing Project

Expressions of Interest

Introduction

The National Trust of Western Australia is seeking Expressions of Interest from individuals with demonstrated experience in the handling, movement and packing of museum collections for a short term project at its heritage property Wonnerup.

Situated 10km north of Busselton and nestled between a majestic Tuart forest and the Vasse Estuary wetlands, the peaceful, almost romantic setting of Wonnerup belies a more difficult and turbulent past.

The site is a powerful reminder of the isolation, danger and struggles faced by the Layman family during its 120 year occupation of Wonnerup. It is also a place of great sadness for the Traditional Owners of this area, the Wadandi people who were displaced from the country they had occupied for thousands of years.

The National Trust of Western Australia is committed to reconciliation and recognises it has both symbolic and practical components, believing strongly that through the acceptance of historical injustices the community can value the culture of Aboriginal people as an integral part of Australian heritage and society. Acknowledging the past is an important part of the healing process. As a community we will work towards a shared understanding and agreement in telling the stories of Wonnerup.

Wonnerup has been presented as an historic house since 1973 and contains a fairly typical display of largely 19th century furniture and house furnishings. Among this is a highly significant collection of both colonial furniture and jarrah furniture carved by Clair Layman in the early 20th century.

The National Trust of Western Australia

The National Trust of Western Australia aspires to awaken the community to the value of heritage. To achieve this outcome we wish to tell the stories embedded in the places in our care through educational and public programs that will create engagement. Interpretation is key to ensure audience and visitor engagement with our heritage places and exposure to stories that are experiential, memorable and provocative.

The National Trust manages the tangible and intangible values of a portfolio of 60 significant heritage places and collections. To conserve, interpret and make these values accessible requires a commitment to best practice heritage management including conservation, adaptive reuse and interpretation. Engagement is driven through a range of narratives and interpretive techniques underpinned by knowledge, research and analysis.

Aboriginal Acknowledgement

The Trust acknowledges its properties are situated on Aboriginal land across the state. The Trust recognises Aboriginal people remain the cultural and spiritual custodians of their land and continue to practise their values, languages, beliefs and knowledge. The Trust is committed to working with Aboriginal people to ensure these practices are recognised and included in the conservation and interpretation of its properties and Aboriginal people are consulted and involved in the development of Trust projects and programs.

Project Background

The National Trust of Western Australia has received a Lotterywest grant to carry out reroofing and minor conservation works to the two historic houses at Wonnerup. The existing timber shingle roofs are in poor condition and have deteriorated to such a point that they require total replacement, this time with galvanised metal sheeting. As further investigation and conservation works will be carried out after the roof replacement the collections need to be removed from the buildings to ensure no damage or loss occurs.

Scope:

The current project requires a team of 2-4 suitably experienced individuals to work together to move, wrap and pack the collections ready for transport to the National Trust's collection store in Perth. Some larger pieces of furniture will be stored on site at Wonnerup. All large artefacts will be moved by others.

It is estimated the pack will take 1-2 weeks depending on the size of the team. One individual will be selected as team leader to provide a single liaison point between the team and the National Trust project manager.

The project will not include preparation of an inventory however collections will need to be packed according to the room in which they are displayed and object/material type with boxes labelled accordingly. A more detailed methodology is to be developed by the team in discussion with the National Trust. All packing materials will be supplied.

The following pages include floor plans and images that show the buildings in which collections are housed and need to be packed:

B1 Residence c1837

- Separating Room (room 2)
- Scullery (room 4)
- Jim's Room (room 5)
- Dairy (room 6)
- Kitchen (room 8)
- Bedroom (room 10)

B2 Residence c1859

- Dining Room (room 2)
- Scullery (room 3)

- Drawing Room (room 4)
- Hall (room 5)
- Bedroom (room 6)
- Bedroom (room 7)
- Bedroom (room 8)
- Bathroom (room 11)

B3 Blacksmith's Workshop

B4 Stables

B9 School House

B10 Teacher's House

The team members will:

- Determine a schedule and approach to the packing of the collections
- Identify the safest way to pack each artefact suitable for both transport and potentially a period of extended storage
- Record room locations for each packed box and label and similarly tag large individual objects

Project timing:

It is expected to commence this project as soon as possible after appointment and is to be completed by mid-October. It is anticipated the project will take 1-2 weeks depending on the size of team (2-4 people).

Insurance requirements:

Consultants are expected to hold both Professional Indemnity Insurance to the value of \$5 million and Public Liability Insurance to the value of \$10 million.

Project fees:

A project contract sum will be negotiated with the successful tenderers. Both daily and hourly rates are to be provided.

All disbursements including accommodation, transport, meals and incidentals are at the consultant's own expense.

Form of Contract:

National Trust short form contract for consultancy/ contract services. NOTE: Payment terms are 30 days from acceptable completion of work being invoiced. An ABN will be required.

Information required:

Proponents are encouraged to contact the project manager prior to submission. National Trust staff are located in the central office at The Old Observatory, Havelock St West Perth.

Submissions will be evaluated against the following criteria:

1. Qualifications and experience in the handling, packing and movement of moveable heritage collections
2. Daily and hourly rates
3. Time frame/constraints for project

The following details must be included within the submission:

- Name of the consultant, business address and relevant contact details
- Details of services offered
- Anticipated timeframe for completion
- Daily and hourly rates
- Names and contact details of two referees who have had recent dealings with the consultant in relation to similar work in the past
- Level of professional indemnity and public liability insurances and the name of the company that holds the policy

Submissions:

All submissions should be clearly marked 'Wonnerup Collections Packing EOI' and submitted no later than 5.00pm WST on Wednesday 30th September 2020 at the following address:

National Trust of Western Australia
The Old Observatory
4 Havelock Street
WEST PERTH WA 6005
Email: trust@ntwa.com.au

Email proposals received by the nominated closing date and time will be accepted provided that they are completed, signed, legible and include all necessary information required to be submitted as part of the proposal.

Project manager:

The primary contact for the project will be Sarah Murphy, Manager Interpretation and Collections.

Ms Sarah Murphy
Manager Interpretation and Collections National Trust of Western Australia
4 Havelock Street WEST PERTH WA 6000

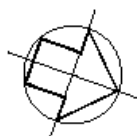
Telephone: 9321 6088 Mobile: 041 995 1454 E-mail: sarah.murphy@ntwa.com.au

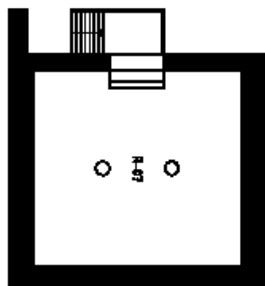


SITE PLAN - PART 1
SCALE 1:1000



SITE PLAN - PART 2
SCALE 1:1000

[illegible]



SCALE 1:100



B1 Scullery (room 4)



B1 Jim's Room (room 5)



B1 Dairy (room 6)



B1 Kitchen (room 8)



B1 Bedroom (room 10)



B1 Separating Room (room 2) and Verandahs (room 1)





SCALE 1:100

B2 Dining Room (room 2)



B2 Scullery (room 3)



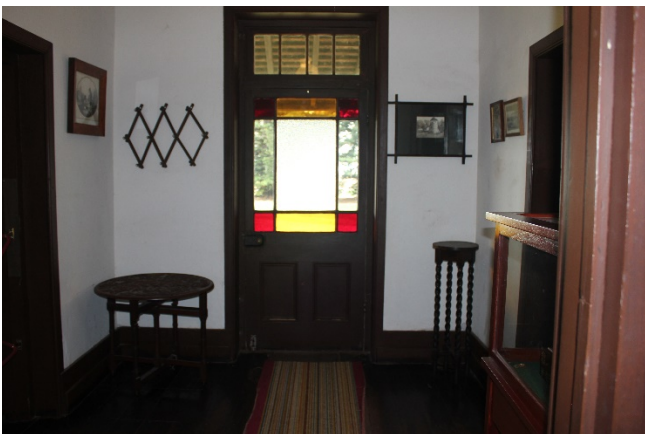
B2 Drawing Room (room 4)



B2 Bedroom (room 6)



B2 Hall (room 5)

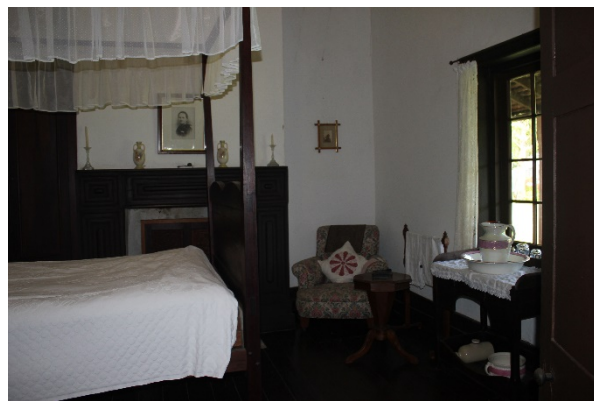


B2

B2 Bedroom (room 8)

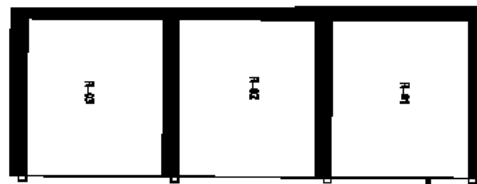


B2 Bedroom (Room 7)

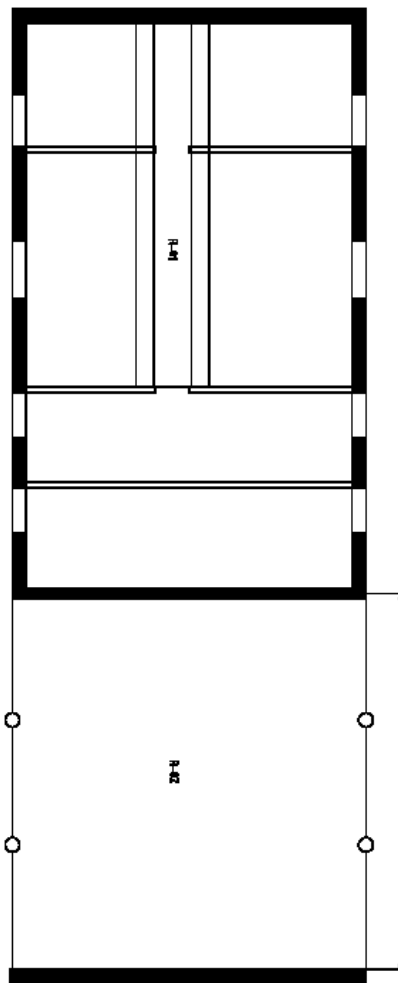


B2 Bathroom (room 11)






**B-03 FLOOR PLAN -
BLACKSMITH'S SHOP**
SCALE 1:100



B-04 FLOOR PLAN - STABLES
SCALE 1:100



| | | | | | | | | | | |
|---|--|---|--|--|--|--|--|---|--|---|
|  | | The National Trust of Western Australia <small>The Old Courthouse, 100 York Street, Perth, WA 6000 Phone: (08) 9442 1000 Fax: (08) 9442 1001 Email: info@nationaltrust.org.au Website: www.nationaltrust.org.au </small> | | MEASURED DRAWINGS Lymann Rd, WONNERUP WA | | WONNERUP PREPARED BY: VICTORIAN DRAWN BY: | | B-03 & B-04 PLANS SCALE: 1:50 1:100 1:200 DATE: 08/08/18 | | NO. 1 A05.00 A |
|---|--|---|--|--|--|--|--|---|--|---|

****Artefact images unavailable****

It is estimated it is an hour's work for two people to pack these objects

