

Regenerating Places of Faith 2019

Friday 16 August 2019
Burnside City Uniting Church

Participants Pack

Conference Purpose

To explore how congregations can be strengthened, including through developing partnerships with other community groups and local businesses, to restore and adapt historic church buildings for worship and as innovative places that enable communities to flourish.

Conference Program

8.40 am	Registration Opens	Dr. Sue King Chair, Uniting Communities
9.00 am	Welcome	
9.05 am	Restructuring Churches Local case studies – who are the stakeholders, who should run the project, and how mission and purpose influences buildings – and the other way around!	Daniel Harris Deputy Registrar, Anglican Diocese of Adelaide Craig Vale Director, Arkvale Architects
9.35 am	Schools & Churches Deacon Tim Grauel Office of Renewing Parishes Catholic Archdiocese of Adelaide	Closing Churches Rev Paul Turley Minister, Clayton Wesley Uniting Church
10.05 am	Morning tea	
10.30 am	Heritage – what it is; relevant age; and the 7 aspects of heritage. How to Prepare a Conservation Management Plans, and How to apply for Heritage grants	Michael Queale Senior Heritage Conservation Architect, Heritage SA Department for Environment & Water
11.10 am	Contemporary religious and spiritual practices , beliefs, and experiences and the level and nature of contact people have with Christian churches.	Dr Ruth Powell Director, National Church Life Survey Research
11.50 am	Spirituality and life stages , with a focus on her 're-entry' research project and the reasons people do re-enter congregations.	Dr Janette Young School of Health Sciences, University of South Australia
12.30 pm	Lunch	
1.30 pm	Sacred Spaces – their ongoing relevance and importance for the wellbeing of our communities	Bishop Tim Harris Anglican Bishop Missioner to the City of Playford
2.10 pm	Overcoming Loneliness – starting a project to examine how our churches connect people, especially the most vulnerable. A case study on the experiences of what some churches are already doing.	Ian Hamilton Director, Arcuate Architecture Daniel Harris Deputy Registrar, Anglican Diocese of Adelaide
2.50 pm	Afternoon tea – time for a chat, to meet, and continue the discussion	

3.15 pm Q&A with Panel of Presenters

Dr. Sue King

3.50 pm Opportunity for feedback, and identify future topics

Chair, Uniting Communities

4.30 pm Conference Close

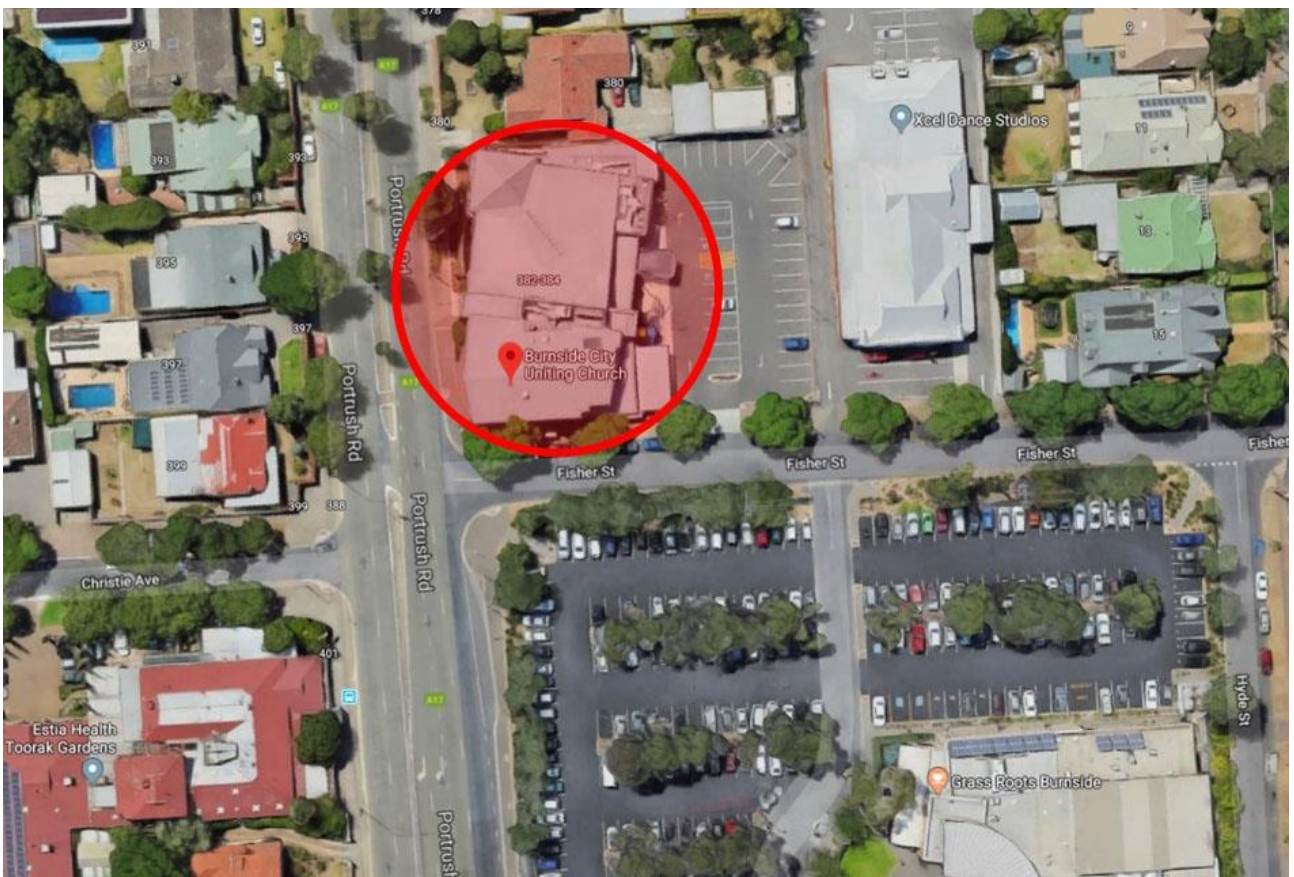
Lunch and refreshments

The registration fee includes the provision of lunch and all refreshments on site.

Website address

<http://bit.ly/Regen19>

or <https://www.nationaltrust.org.au/event/regenerating-places-of-faith-conference/>



Address

384 Portrush Rd, Tasmore – on the corner of Fisher St.

Access and Parking

Church car park is off Fisher St and the church entrance is off the car park.

If travelling south along Portrush Rd, turn into Fisher St.

If travelling from any other direction, approach via Greenhill Rd, Hyde St then Fisher St.

The Council car park across Fisher St can also be used. The time limits do not apply on weekends.

Public transport

Suburban buses travel along Greenhill Rd and Circle Line buses travel along Portrush Rd.

Photographs, biographical notes and synopses

Dr. Sue King - our Conference Chair



Sue is the Chair of the Board of Uniting Communities, and joined the Board in 2014. She was an academic in Social Work and Human Services at the University of South Australia and in addition to her roles at the University, she has been President of the Australian Association of Social Workers, SA Branch and a member of the board of numerous community organisations Summerhill Aged Care Inc., Relationships Australia (SA), the South Australian Housing Trust and the Children's Services Consultative Committee.

Uniting Communities is currently redeveloping the site of a metropolitan church into a 20-storey, mixed-use building. The UCity building is conceptualised as a vertical village and will bring together Uniting Communities' extensive service offerings and specialist disability long-term rental and short-term respite accommodation, commercial and retail spaces with the very first of its kind, city retirement living.

In this 'vertical village' the UCity Uniting Church will function in and around the communities living, using and working in the building as well as engaging with others living in and around Adelaide.

Deacon Tim Grauel



Tim is a deacon in the Catholic Archdiocese of Adelaide. For the last 3 years he has worked in the Office for Renewing Parishes, which supports and encourages the renewal activities of parishes, schools and communities. A recent emphasis of the Office has been the parish-school relationship, which involved visiting each of the 90+ Catholic schools in the Archdiocese. Tim collaborated with Catholic Education South Australia in writing a working draft, 'Being Church Together: A Theology, Vision and Guiding Principles for the Parish-School relationship' (October 2018). He worked previously as a senior manager for ACH Group implementing strategic business improvement systems. He holds Masters degrees in Theology and in Social Science (Counselling). Tim is married to Carolyn; they have two adult children.

A presentation on the rationale for and key messages of *Being Church Together: A Theology, Vision and Guiding Principles for the Parish-School relationship*. This document is a stimulus to support and enhance the relationship between the parish and its associated school as they participate in the life and mission of the Church and its ongoing renewal. Copies of this document will be distributed to attendees and time will be set aside for questions and answers.

Ian Hamilton



Ian is a registered Architect in South Australia with over thirty year's professional experience working in private practice in both Australia and the UK. He established Arcuate Architecture in Adelaide in 2016 to pursue his passion – to work with church congregations and their buildings. Ian's past experience includes:

- Head of the Conservation Architecture Group at Page \Park Architects, Glasgow.
- Registered Architect in the UK; Fellow of the Royal Incorporation of Architects in Scotland; and, former President of the Glasgow Institute of Architects.
- Senior Conservation Architect with the State Heritage Unit for South Australia
- Senior Heritage Architect with Grieve Gillett Andersen, Adelaide.

Ian will explain how Arcuate Architecture has been working with church congregations on new ways to help them build stronger relationships with their neighbourhoods through the adaption of their existing places of worship to better serve the whole community. He will also review Arcuate's recent international investigation into how congregations can help in alleviating loneliness and social isolation to build a stronger, more resilient South Australian society.

Daniel Harris



Daniel is passionate about growing and nurturing effective and healthy Churches. Growing up in Rectories in Sydney and Adelaide gave Daniel the opportunity to observe the organizational dynamics of local churches, both at their best, and through challenges.

With an undergraduate degree in computer and information science, Daniel built an innovative information systems team in Baptist Care SA, using technology platforms to effect cultural change. He ended his seven years there as Director Operations.

Having completed an MBA at the University of Adelaide, Daniel is currently the Manager of Ministry & Parish Support and Deputy Registrar at the Diocese of Adelaide. His present focus is as Parish Manager of the Parishes of Gawler and Unley, and working together with the Diocesan Strategic Property Officer in the Mission & Property Strategy Task Force.

Daniel worships with his wife Philippa and their three young children Genevieve, Rowan, and Josephine at the St Francis Congregation, part of Trinity College in Gawler.

Bishop Tim Harris



Tim is the Anglican Bishop Missioner to the City of Playford.

Dr. Ruth Powell



Ruth is Director of NCLS Research, a research centre that focuses on church vitality and community spirituality and wellbeing. Ruth has worked with NCLS Research since 1991 and became Director in 2007. She also holds a position as Associate Professor at Charles Sturt University (CSU).

Major projects for NCLS Research include the five-yearly National Church Life Survey, which commenced in 1991 and forms the basis of one of the largest, most comprehensive databases on church life of its kind in the world. NCLS Research provides resources to every local church that participates as well as local and wider church leadership. These are aimed to assist churches identify and build on their strengths.

Dr Powell will present results from the 2018 Australian Community Survey run by National Church Life Survey (NCLS) Research. This study reveals how religious and/or spiritual Australians are and suggests that being 'religious' is still an important part of identity for many.

Ruth will also present Australians' attitudes to Christianity and their views about the role that churches should have in contemporary society. Findings about how open different groups are to an invitation to church will provide some suggested strategies for churches and their community engagement.

Michael Queale



Michael is a current executive member and past Australian Vice-President of Australia ICOMOS. Michael is a registered Architect and Senior Heritage Conservation Architect at the South Australian State Heritage Unit in Adelaide, with over twenty-five years of acknowledged expertise in heritage assessment, advocacy and policy; South Australian architectural history and conservation management - in Australia and abroad. Michael was a member of the South Australian Heritage Council and has practiced as a Heritage Adviser in South Australia and Victoria. He is a lecturer in South Australian Architectural History at the Faculty of Architecture, University of Adelaide. Michael also has overseas experience in cultural heritage management in Indonesia and Thailand. Michael was co-convenor of the recent Australia ICOMOS conference Fabric 2015. He has presented papers on adaptive reuse, heritage value, contextual design and heritage advisory service models.

Heritage 101 – a foundation course for South Australia

The community interest in heritage is on the rise. We are concerned about keeping our past, but are also afraid of heritage listing and its constraints on future development. These issues will be discussed, using churches as examples to help understand the State Heritage system. The session will explore heritage value and thresholds; how a nomination becomes a heritage place; tools to help manage heritage places; our grants program and finally, future State Heritage projects of relevance to church communities.

Rev Paul Turley



Paul Turley is the minister of Clayton Wesley Uniting Church where he has been for the last seven years. As a part of his work at Clayton Wesley Paul has been involved in the establishment of *The Spire Community – Clayton Wesley Uniting Church and Uniting Communities working together*. The Spire Community utilises the Clayton Wesley site to welcome people from across the community offering many programs and projects to build community, including Hope's Café, The Spire Community Garden, ESL classes for newly arrived peoples, an op shop, legal support for refugees and asylum seekers and emergency relief.

Prior to coming to Clayton Wesley, Paul has worked in community development work for churches and not-for-profit agencies in other parts of Australia, the United Kingdom and The United States.

A good ending: closing congregations well

The Church in the West has been declining numerically for a long time and the closing of congregations has become a too frequent experience in many of our denominations. While we rightly put energy into sustaining, growing and developing congregations, we perhaps need to think more carefully about how we work with congregations that are near their end. What do we need to do to face the truth of our experience? What can we learn from our long and deep pastoral experience of ministering to individuals who are dying? What can we do in ministry with congregations that no longer feel they have the energy for regeneration? How can we face the death of a congregation in the light of a gospel of resurrection?

Craig Vale



Craig is a registered Architect with over 30 years experience designing and delivering projects both small and large across many industry sectors including ecclesiastical, retail, defence, retirement, aged care, commercial, hospitality and education. His portfolio of work spans both national and international locations. He is a past recipient of an Architecture award for a Hope Valley Lutheran Church and Community Centre.

In a world of rapid change and disruption, the role of the Church and the facilities that it provides is evolving. Increasing online resources, technology integration and changing social dynamics require Churches to respond to constant change. They need to transform their Church facilities and the way they engage with people both individually and collectively.

Continual transformation within Church environments is also shifting the broader community understanding and perception of what is 'Church'. Craig has completed a number of Lutheran Church projects that deliver prescribed community focused outcomes and will provide further insights at this year's Conference in relation to his own Church, St Michael's Lutheran Church, Hahndorf.

Dr Janette Young



Janette, from the University of South Australia, has background in social work, program development and more recently academia. She always maintains a focus on finding out and then seeking to best facilitate people being able to live rich and meaningful lives, especially as we age. She has been part of her local church community for many years and lives with two small dogs and one husband giving her a personal connection to two of her core research interests - church engagement and pets.

Dr Young will speak about the role of the church with regard to the multiple generations of ageing Australia and the niche that churches can play in older people's lives and wellbeing. She will link this to the rationale for, and preliminary data emerging from, the University of SA's older returnees to church research currently being undertaken in partnership with the National Church Life Survey (NCLS).