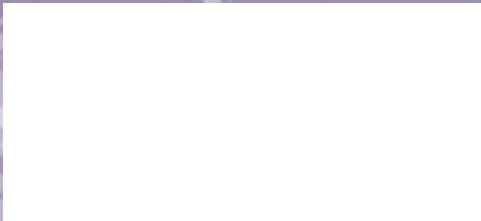


Heritage 101

South Australia & Churches



Michael Queale
Senior Heritage Conservation Architect
Heritage South Australia



Heritage South Australia


www.environment.sa.gov.au/topics/heritage

https://www.environment.sa.gov.au/topics/heritage


 **SOUTH AUSTRALIA**  **Government of South Australia**
Department for Environment and Water

[Home](#) [About us](#) [Topics](#) [Our places](#) [Get involved](#) [Licences & permits](#) [News](#)

[Search website](#)




Heritage




Heritage Grants

Heritage Grants will be made available for projects across SA to conserve State heritage places.




Heritage Tourism Strategy

Find out how we are developing a Heritage Tourism Strategy for SA and see how you can get involved.




Historic Buildings Conservation Program

Supporting the conservation of State heritage places. Find out if your place is eligible for funding.




SA Heritage Register

Find a heritage place in SA, nominate a place, assessment, heritage surveys, current entries and submissions.



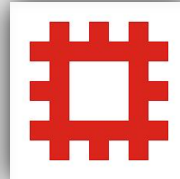
Essence of Heritage competition

Enter our Essence of Heritage photo competition to win one of the great prizes on offer.



SA Heritage Council

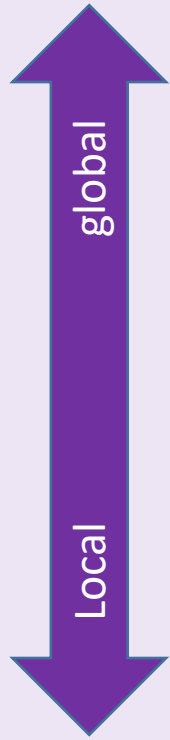
Find out how the SA Heritage Council works to protect South Australia's heritage.



Heritage: defn...

.....is our legacy from the past, what we live with today, and **what we pass on to future generations**. Our cultural and natural heritage are both irreplaceable sources of life and inspiration *(UNESCO)*

.....is all the things that make up Australia's identity - our spirit and ingenuity, our historic buildings, and our unique, living landscapes. Our heritage is a legacy from our past, a living, integral part of life today, and the stories and places we pass on to future generations
(Department of the Environment)



World Heritage Sites

National Heritage (and Commonwealth)

State Heritage (Places and Areas)

Local Heritage (Places and Areas)

Contributory (items and streetscapes)

World Heritage List

World Heritage Committee

....supported by UNESCO

(United Nations Educational, Scientific and Cultural Organisation)

- IUCN (International Union for Conservation of Nature), Switzerland
- ICOMOS (International Council on Monuments and Sites), Paris
- ICCROM (International Centre for the Study of the Preservation and Restoration of Cultural Property), Rome

- a) human creative masterpiece
- b) human values in architecture, technology, monumental arts, town planning, landscape
- c) testimony to cultural tradition or civilisation
- d) example of building type, architecture, technology, landscape
- e) vulnerable example of settlement, land use, sea use
- f) association with events, traditions, ideas, beliefs, artistic/literary works
- g) embodying natural phenomena, natural beauty, aesthetic quality
- h) stages of earth's history (record of life, geological, geomorphic, physiographic)
- i) ecological/biological processes (terrestrial/fresh water/coastal/marine ecosystems, plant/animal communities)
- j) natural habitat (biological diversity, threatened species)



United Nations
Educational, Scientific and
Cultural Organization

World
Heritage
Convention

[News & Events](#)
[The List](#)
[About World Heritage](#)
[Activities](#)
[Publications](#)
[Partnerships](#)
[Resources](#)



UNESCO » Culture » World Heritage Centre » The List » World Heritage List



Global Strategy

[Criteria](#)
[Upstream Process](#)
[Tentative Lists](#)
[World Heritage List Nominations](#)

World Heritage List

[New Inscribed Properties](#)
[Interactive Map](#)

World Heritage in Danger

[The List in Danger](#)

Success Stories

[Donate Now](#)

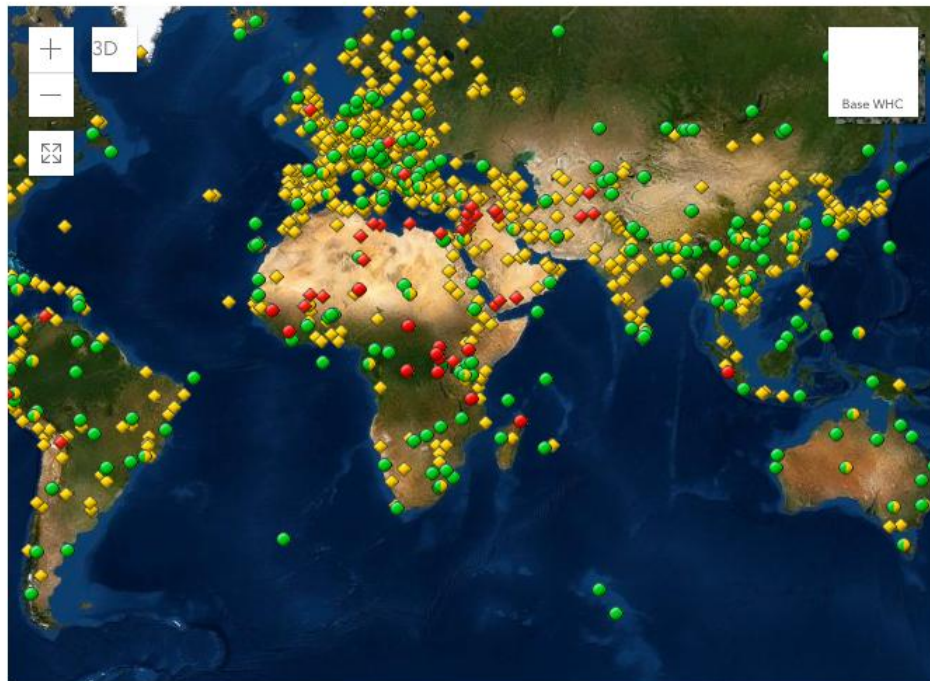
Donate now and help preserve World
Heritage sites

43rd session
of the World Heritage
Committee

Baku, Azerbaijan, 30 June – 10 July
2019

[Advanced](#)

World Heritage List



Earthstar Geographics

Powered by Esri

Order by

Country	Region	Year	Property Name
Synergy protection	A	B	C
D	E	F	G
H	I	J	K
L	M	N	O
P	Q	R	S
T	U	V	Y
Z			

Official World Heritage List in other formats

[RSS](#) [XML](#) [KML](#) [XLS](#)

Global Statistics

[Official World Heritage List Statistics](#)

Legend

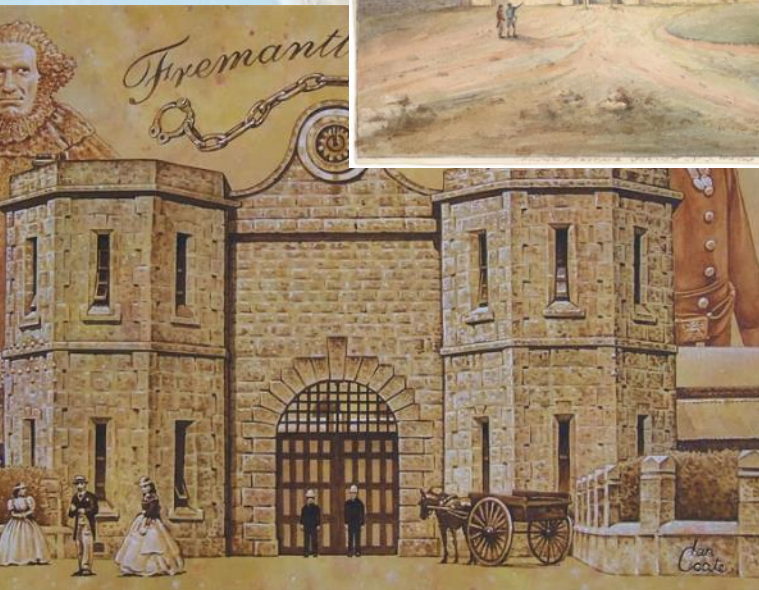
Category of site

◆ Cultural site
 ◆ Natural site
 ◆ Mixed site

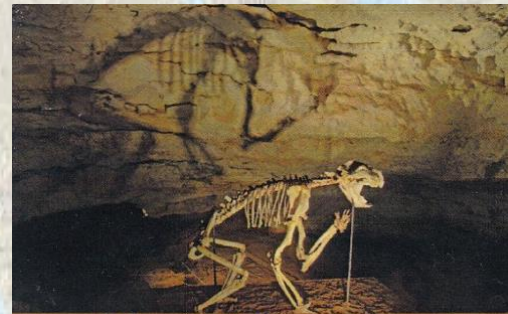
Site inscribed on the List of World Heritage in Danger

◆ Cultural site
 ◆ Natural site
 ◆ Mixed site

World Heritage sites in Australia



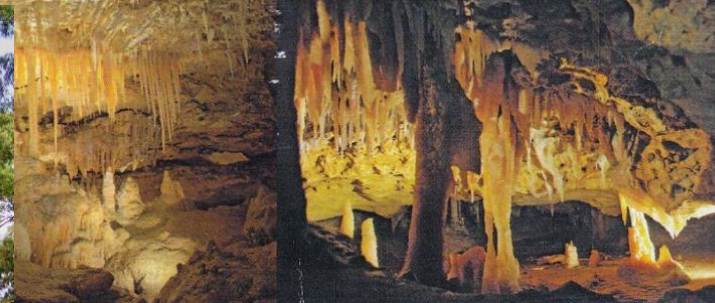
World Heritage in South Australia



Victoria Fossil Cave



Naracoorte South Australia



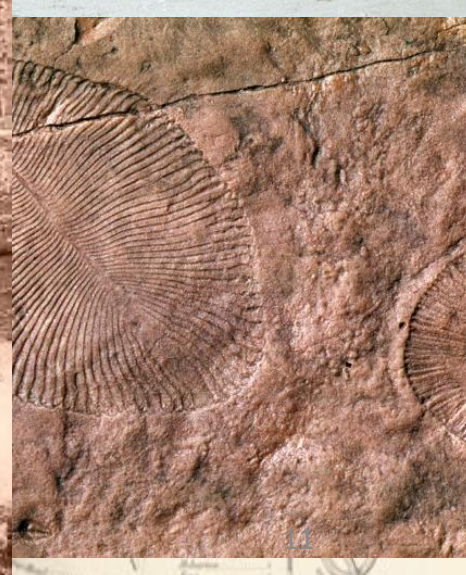
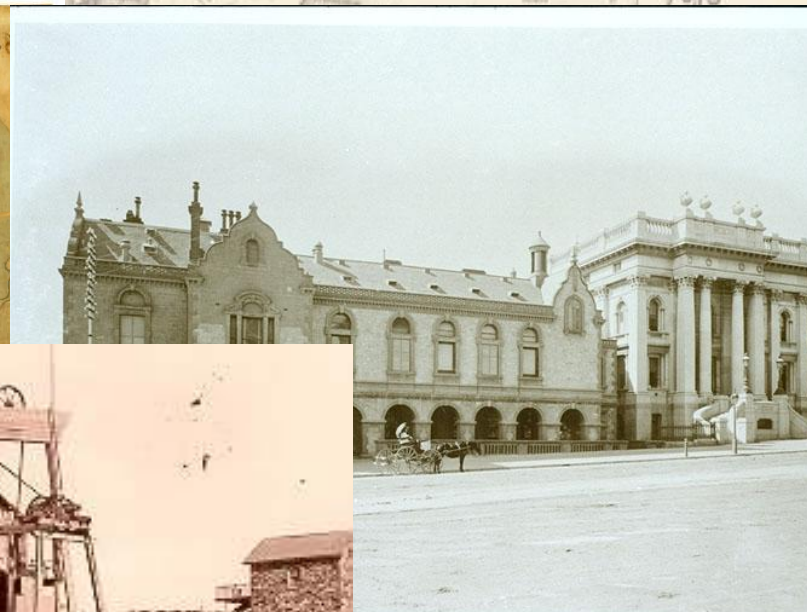
National Heritage List

Australian Heritage Council
(Department of the
Environment)

*Environment Protection and
Biodiversity Conservation Act
1999*

- a) course of natural/cultural history
- b) uncommon/rare/endangered historical aspects
- c) understanding of natural/cultural history
- d) class of natural/cultural places/environments
- e) aesthetic characteristics
- f) creative/technical
- g) social/cultural/spiritual
- h) life/works of person/group (natural/cultural history)
- i) indigenous traditions

National Heritage places in SA



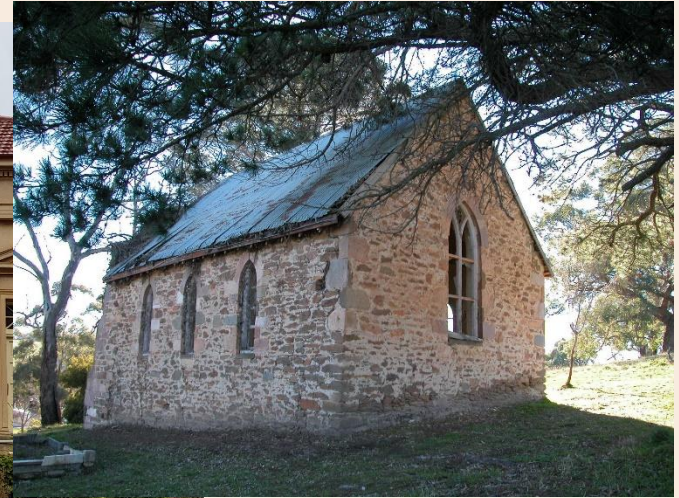
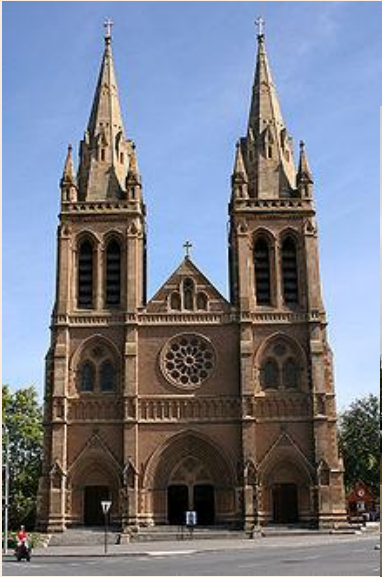
Commonwealth heritage



State Heritage Places & Areas

- South Australian Heritage Register
- South Australian Heritage Council
- Heritage South Australia
- SA Heritage Places Act (1993)
- Development Act (1993) – transitioning to the Planning, Development and Infrastructure Act (2016)
- (a) it demonstrates important aspects of the evolution or pattern of the State's history;
- (b) it has rare, uncommon or endangered qualities that are of cultural significance;
- (c) it may yield information that will contribute to an understanding of the State's history, including its natural history;
- (d) it is an outstanding representative of a particular class of places of cultural significance;
- (e) it demonstrates a high degree of creative, aesthetic or technical accomplishment or is an outstanding representative of particular construction techniques or design characteristics; or
- (f) it has strong cultural or spiritual associations for the community or a group within it; or
- (g) it has a special association with the life or work of a person or organisation or an event of historical importance.

State heritage



Local heritage

Development Act 1993

- a) historical / economic / social
- b) customs / ways of life
- c) lives of local residents
- d) aesthetic/design or construction techniques
- e) local personality or event
- f) notable landmark
- g) tree of historical / social importance

294

TABLE Adel/2

Local Heritage Places

Property Address	Description of Place and Elements of Heritage Value	Lot No. or Part Sec	Plan No.	Certificate of Title
11 Ada Street ADELAIDE	Dwelling; External form, including original fabric and detailing of facade, external walls, roof and chimneys, as visible from the street. Excludes any later additions.	A641	F182293	CT 5825/768
12 Ada Street ADELAIDE	Dwelling; External form, including original fabric and detailing of facade, external walls, roof and chimneys, as visible from the street. Excludes any later additions.	A2	F121635	CT 5214/534
18-20 Ada Street ADELAIDE	Dwelling; External form, including original fabric and detailing of facade, external walls, roof and chimneys, as visible from the street. Excludes any later additions.	A635	F182287	CT 5794/495
81-83 Angas Street ADELAIDE	Former Dwelling; External form, in particular the fabric and detailing of facades and balcony/verandah. Excludes incongruous later additions.	A501	D14780	CT 5283/129
11-13 Austin Street ADELAIDE	Former Assay House; External form, in particular the fabric and detailing of Austin Street facade.	A1	F104957	CT 5161/496
265 Carrington Street ADELAIDE	Dwelling; External form, including original fabric and detailing of facade, external walls, roof, verandah and chimneys. Excludes any later additions.	A20	D19907	CT 5239/860
267 Carrington Street ADELAIDE	Dwelling; External form, including original fabric and detailing of facade, external walls, roof	A766	F182418	CT 5857/327



57/350

96/848

04/759

81/597

Non-statutory

Engineering Heritage Australia Register

-Engineering Heritage Markers

-Engineering Heritage National Landmarks

National Trust of South Australia

-Heritage Register SA — ‘Classified’ places and objects

-Significant Tree Register

THE BURRA CHARTER

The Australia ICOMOS Charter for
Places of Cultural Significance 2013



Australia ICOMOS Incorporated
International Council on Monuments and Sites

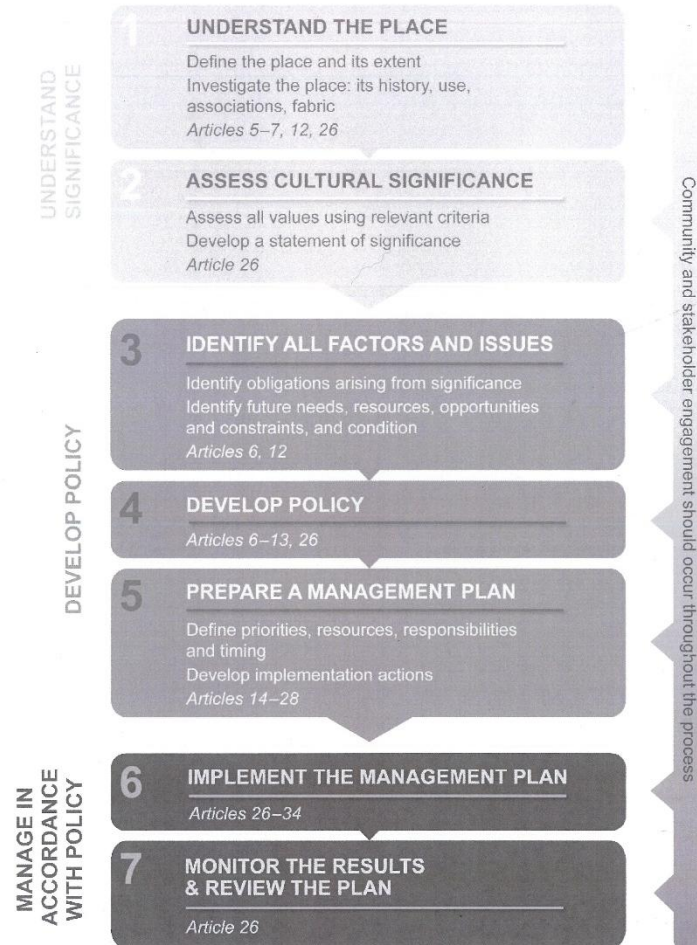
The manual for
heritage
management

The Burra Charter Process

Steps in planning for and managing a place of cultural significance

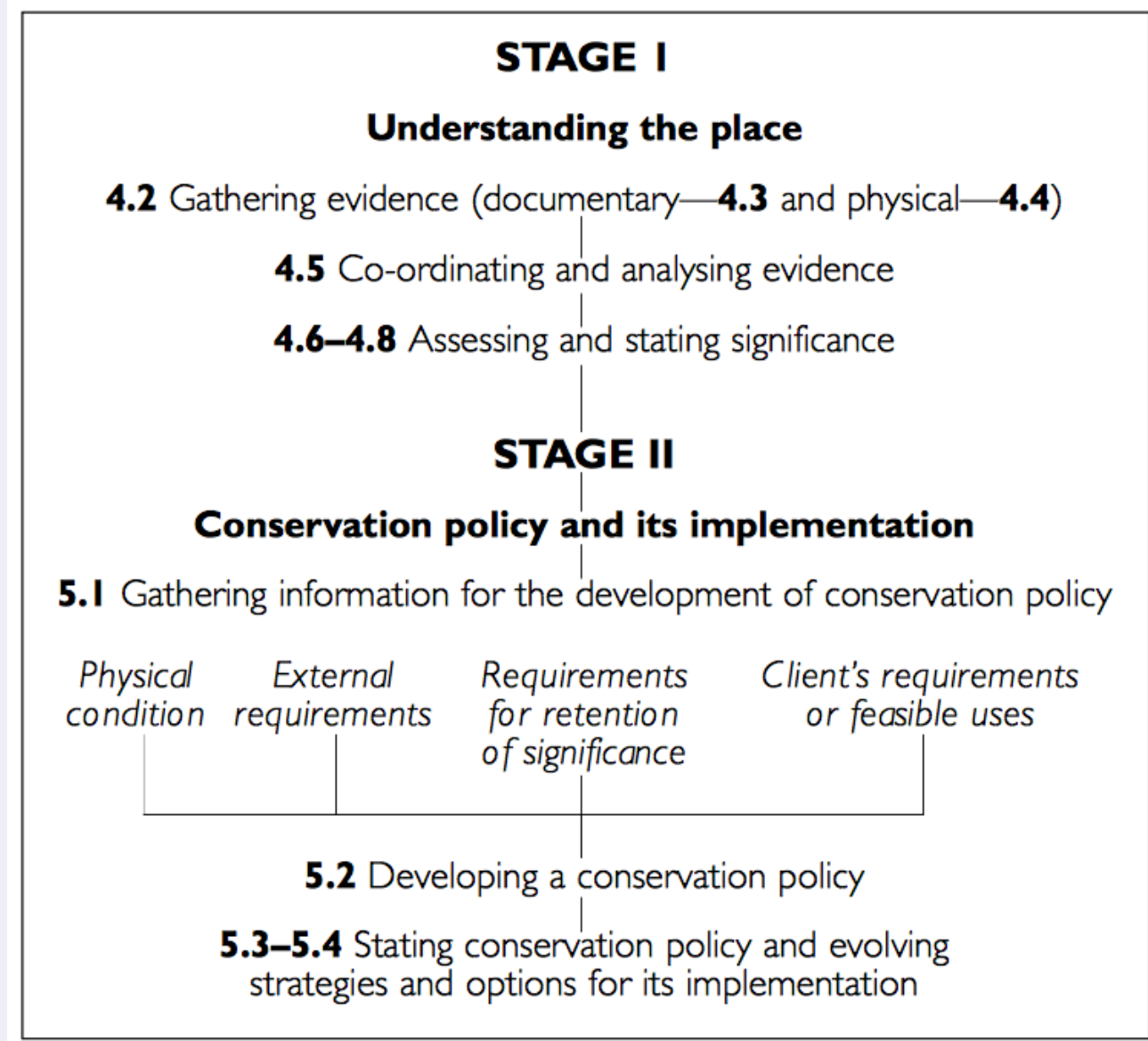
The Burra Charter should be read as a whole.

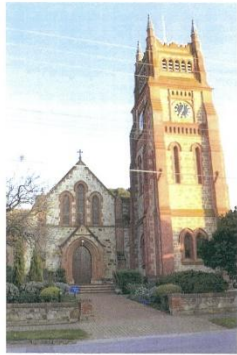
Key articles relevant to each step are shown in the boxes. Article 6 summarises the Burra Charter Process.



BC - heritage
management
framework

CMP - Conservation Management Plan

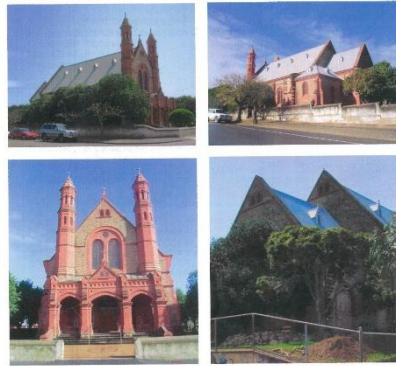




CONSERVATION MANAGEMENT PLAN
ST ANDREW'S ANGLICAN CHURCH
43 CHURCH TERRACE, WALKERVILLE, SA

MAY 2010

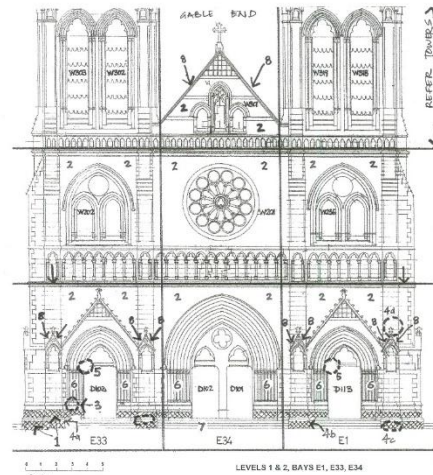
McDougall & Vines
Conservation and Heritage Consultants
27 Sydenham Road, Norwood, South Australia 5067
Ph (08) 8362 6399 Fax (08) 8363 0121
Email: mcdvines@bigpond.com



ST PETER & ST PAULS ROMAN CATHOLIC CHURCH,
8 PORTER STREET, GAWLER
CONSERVATION MANAGEMENT PLAN

November 2005

McDougall & Vines
Conservation and Heritage Consultants
27 Sydenham Road, Norwood, South Australia 5067
Ph (08) 8362 6399 Fax (08) 8363 0121
Email: mcdvines@bigpond.com



Overall View



40 cracked final line masonry



6 door columns—repair & refinish



5 cracked wall

EAST ELEVATION (LITURGICAL WEST) - BAYS E1, E3, E34
(includes Gable End - includes Tower and Spire)

General Conservation Works:

Clearing of facade - remove all insect nests and metal fittings (nails, rods etc). Carefully remove all moss and other with non-metallic scrapers and brushes. Using low pressure water, hand-wash all facade brickwork. Remainder of facade to be cleared. Apply biocide to all horizontal surfaces on completion of clearing. Limestone consolidation with ethyl silicate to all horizontal surfaces - string courses, gable coping, buttress coping, window and door hood moulds. Shelter coat - to be applied after limestone consolidation (to severely deteriorated surfaces only).

Where there is severe deterioration to limestone - remove friable material and surface deposits (by vapour or poultice method), consolidate with ethyl silicate, undertake lime mortar repairs, install lime shelter coating.

Bird Deterrent - install stainless steel standard bird proof wires (3 rows) to horizontal areas adjacent to gable ends and at base of each lower window/buttress.

1. Re-point limestone piers (vertical) - cut out previous hard cement mortar, re-point in lime mortar - 100% of limestone piers.
2. Re-point deteriorated and open joints in lime mortar - allow for 50% of elevation (excluding piers).
3. Stone fractures to limestone - inject and fill - assume 100 fractures to this elevation - refer typical fracture photo.
4. Stone indent - replace damaged stone to match (either limestone or limestone) - 4 stones at building base. Remove and re-install missing final adjacent to D113 and refit with stainless steel rod hung (if). Install stone indent to gable cross, now cracked off.
5. Stitch pin cracked door inside (2 stones).
6. Dressed sandstone columns around doors - repair friable areas, clean mortar and finish in traditional pigmented paint (colour to match original dark terracotta).
7. Place entrance steps - clear steps and re-point open joints. Insert 1 granite indent at top of first flight, corner.
8. Limestone consolidation to stringcourses and cappings - inject with ethyl silicate, and consolidate with ethyl silicate.

ST PETER'S CATHEDRAL,
26 KING WILLIAM ROAD, NORTH ADELAIDE

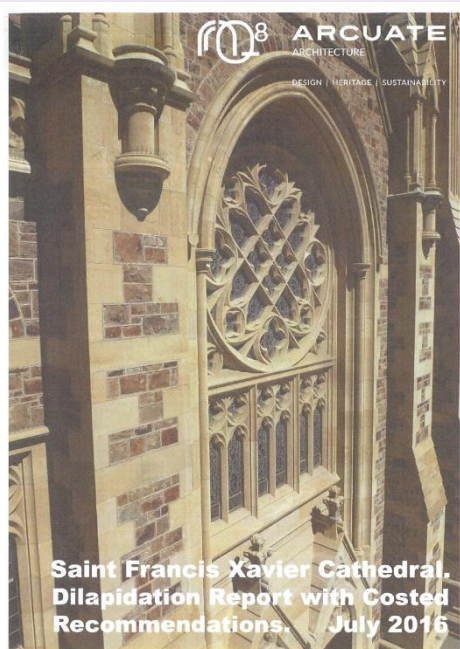
**DILAPIDATION SURVEY AND
RECOMMENDED CONSERVATION WORKS**

East Elevation (Litururgical West) - Bays E1, E33, E34

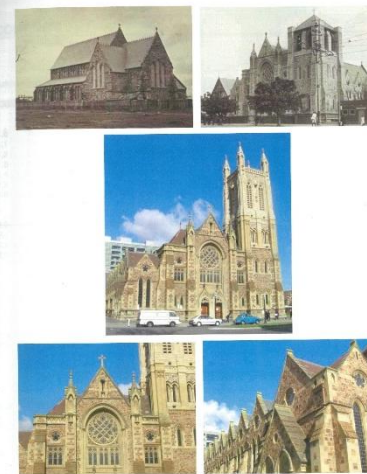
Date: February 2014. Drawing No: 6

MCDUGALL & VINES
CONSERVATION & HERITAGE
CONSULTANTS
27 Sydenham Road, Norwood, South Australia 5067
Telephone (08) 8362 6399 or Mobile (08) 8363 0121
Email: mcdvines@bigpond.com

Note: This Drawing is not to accurate scale.
Consult for detail of limestone and condition on site.



Saint Francis Xavier Cathedral.
Dilapidation Report with Costed
Recommendations. July 2016



ST. FRANCIS XAVIER CATHEDRAL, ADELAIDE
CONSERVATION MANAGEMENT PLAN

September 2006

McDougall & Vines
Conservation and Heritage Consultants
27 Sydenham Road, Norwood, South Australia 5067
Ph (08) 8362 6399 Fax (08) 8363 0121
Email: mcdvines@bigpond.com

We are from the government – how can we help?

- Heritage Advisers
- Heritage Grants
- Reducing Red Tape
- 20th C Churches Project

