

# Call for expressions of interest

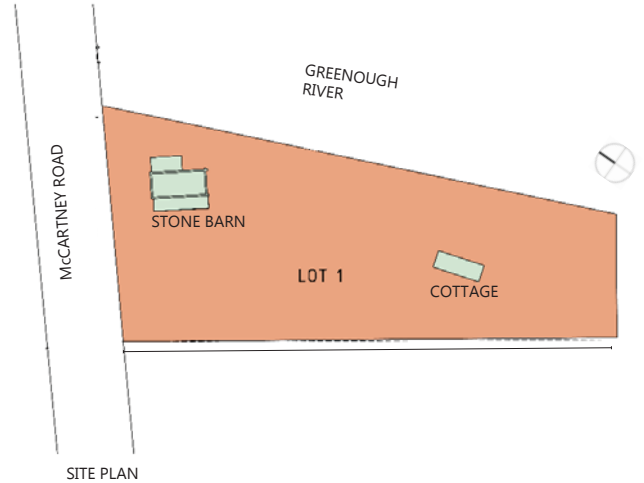
## STONE BARN & COTTAGE

### GREENOUGH FLATS

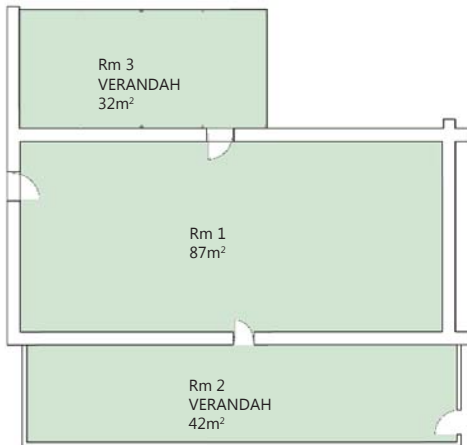
Redevelopment and Partnership Opportunity



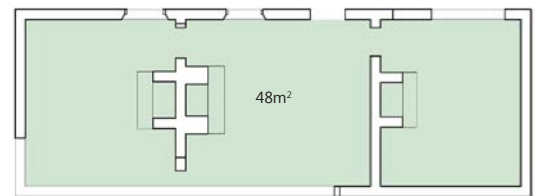
STONE BARN



SITE PLAN



STONE BARN PLAN



COTTAGE PLAN

0m 5m



COTTAGE



COTTAGE VIEW

# Stone Barn and Cottage

## Lot Details

220 McCartney Rd, Greenough  
Lot 1 on Deposited Plan 53272  
6298 square metres *approximate*

## Heritage listings

State Register of Heritage Places number 01163 (stone barn)  
Municipal Inventory place 48 category 2X (stone barn)  
State Register of Heritage Places number 03730 (cottage)  
Municipal Inventory place 47 category 3 (cottage)

## Use

Proponents are encouraged to discuss any proposals with the City of Greater Geraldton as well as the National Trust of Western Australia. The National Trust encourages compatible uses that respect the cultural significance of the place. All use proposals will be considered subject to planning and heritage considerations

## Summary

Located immediately west of the Greenough River on the south side of McCartney Road, the barn is of a simple vernacular style. The large rectangular structure is of rubble limestone construction with a gable corrugated iron roof and parapets to gable ends. A lean to roof has been added to the east elevation which previously included a cream brick kiln with chimney built to facilitate the use of the place for making pottery. The chimney, which is shown on the photograph, was removed during conservation works undertaken in 1998. The west elevation has an enclosed verandah clad with corrugated iron. There is evidence of stone extensions to the south and east.

Situated south of the old barn and approximately 200 metres off McCartney Road on the west bank of the Greenough River, are the ruins of a three roomed cottage of brick construction. There is evidence of an original shingle roof beneath the partly collapsed corrugated iron hipped roof. There is also evidence of a lean-to to the east, a verandah to the west and casement style timber windows. The cottage is in a derelict state. There are remains of stone garden walls and remnant footings of other structures. Conservation works, including the reroofing of the building and the boarding up of openings, occurred in April-May 1998.

The Stone Barn is significant for the following reasons:

*The Barn has some historic significance for its long association with the settlement of the Front Flats.*

*It is representative of simple rural utilitarian structures and forms an important part of the built heritage of the district.*

[Municipal Inventory Entry]

The Cottage is significant for the following reasons:

*Barn Cottage has considerable aesthetic significance given its brick construction, which is unusual in the area.*

*It forms part of an important historic landscape and is evidence of the simple style of construction in the 1860s.*

*The place is associated with the Waldeck family, prominent members of the Greenough community.*

[Municipal Inventory Entry]

The main building is generally in a fair condition however considerable work is required to bring it to a usable state. The cottage is in poor condition and is considered a ruin, however considerable work would enable the building to be brought up to a usable condition. There are currently no bathroom or kitchen facilities. Power supply, communications, water supply and sewer/septic systems will require installation and/or upgrading depending on user requirements.

More Info: [bit.ly/GreenoughEOI](http://bit.ly/GreenoughEOI)

Enquiries: Dan Klofverskjold 08 9321 6088 [dank@ntwa.com.au](mailto:dank@ntwa.com.au)