

Call for expressions of interest

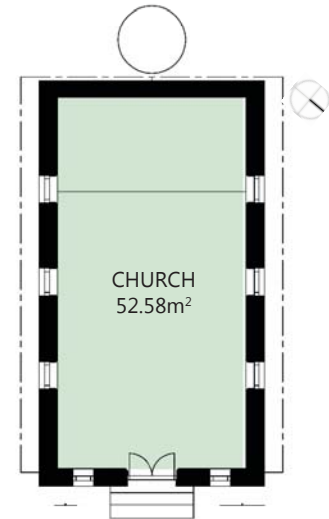
St JAMES' CHURCH

GREENOUGH FLATS

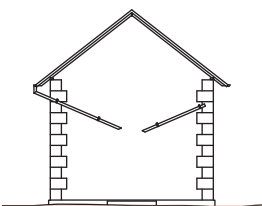
Redevelopment and Partnership Opportunity



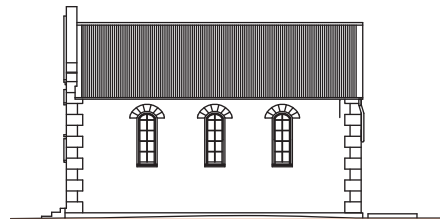
VIEW FROM BRAND HWY



GROUND FLOOR PLAN



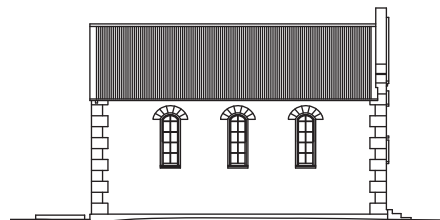
SOUTH WEST ELEVATION



NORTH WEST ELEVATION

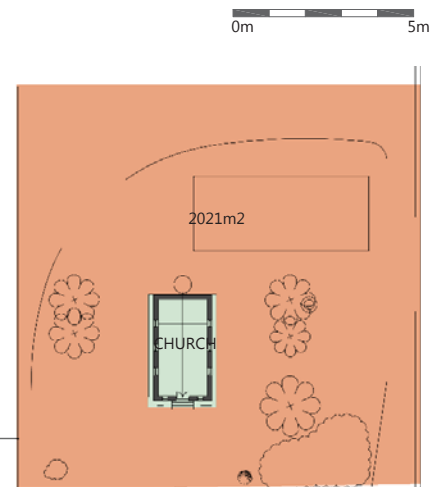


NORTH EAST ELEVATION



SOUTH EAST ELEVATION

0m 5m



SITE PLAN

BRAND HWY



VIEW FROM NORTH EAST



VIEW FROM NORTH WEST

St James' Church

Lot Details

33583 Brand Hwy, Greenough
Lot 703 on Deposited Plan 252060
2021 square metres *approximate*

Heritage listings

State Register of Heritage Places number 01145
Municipal Inventory place 82 category 1

Use

Proponents are encouraged to discuss any proposals with the City of Greater Geraldton as well as the National Trust of Western Australia. The National Trust encourages compatible uses that respect the cultural significance of the place. All use proposals will be considered subject to planning and heritage considerations

Summary

St James' Anglican Church, South Greenough, a rectangular plan church of random coursed limestone with corrugated iron roofing, designed in a simple rendition of Victorian Romanesque style, in an open setting with a remnant stone well.

It is significant for the following reasons:

The place is a rare example in the State of an extant Victorian Romanesque style church, especially from the 1860s-1880s period, and a good example of the style applied to a simple rural church;

The place is the earliest extant Anglican church in the region, the only survivor of the first two Anglican churches built in what is now the Anglican Diocese of the Northwest, and a rare example of an extant nineteenth century Anglican church north of Perth;

The place is a landmark on the Brand Highway, marking the southern approach to the historically important Central Greenough (historic settlement);

The place was constructed at a time when the Greenough Front Flats were the focus of population for the Victoria District, and its subsequent decline and eventual abandonment shows the shift in population in the area towards the Back Flats, following reductions in wheat yields due to rust infection in the 1880s, devastating floods in 1888, the construction of the railway line through Walkaway in 1894;

The simple design and lack of detailing is indicative of the precarious economic situation of farmers in the Greenough area in the early years of settlement;

The place retains an open isolated rural setting reminiscent of its historical context, and;

The place is valued by the wider community and is indicative of the development of heritage ethos in the local community with campaigns from the 1960s ensuring the place was saved after being earmarked for demolition, and by the long-term interest and involvement of the National Trust in its preservation.

[State Register of Heritage Places Register Entry]

Plans & Drawings

'Conservation Plan' (2006)
Site Plan
Floor Plans
External Elevations
Internal Elevations

The building is generally in a fair to good condition however considerable work is required to bring it to a usable state. Power supply, communications, water supply and sewer/septic systems will require installation and/or upgrading depending on user requirements.