

Call for expressions of interest

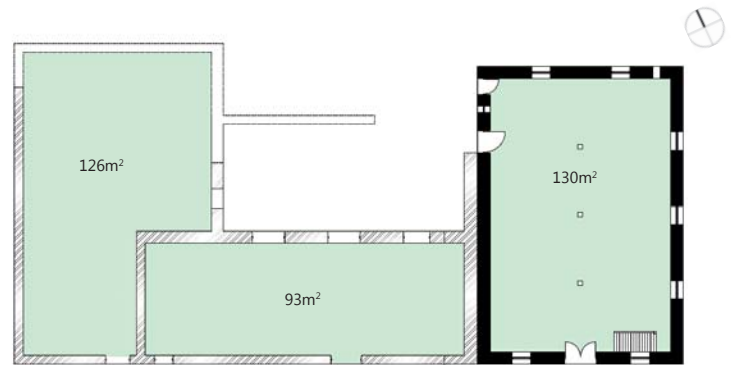
CLINCH'S MILL

GREENOUGH FLATS

Redevelopment and Partnership Opportunity

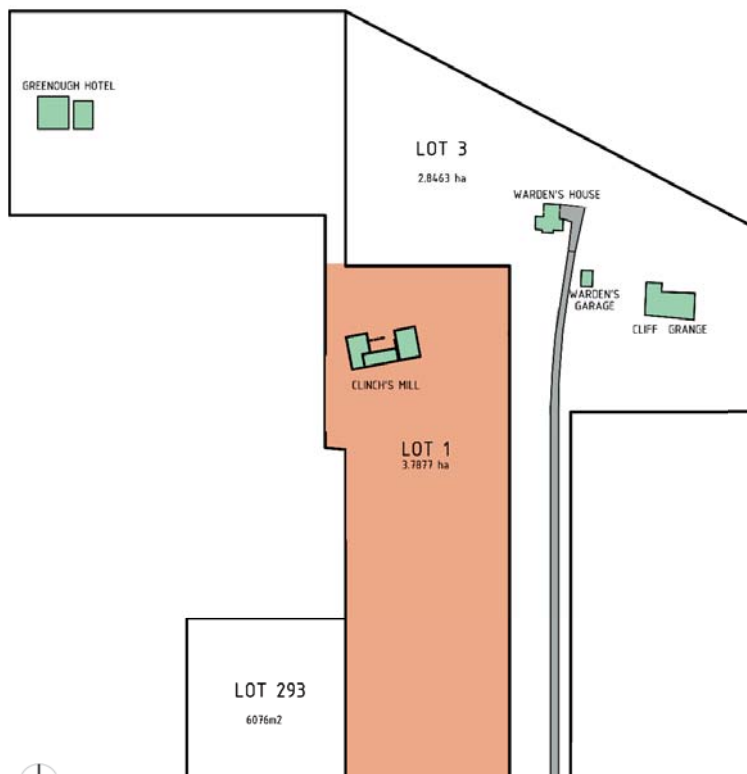


VIEW FROM NORTH EAST



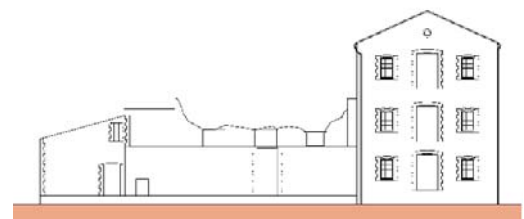
GROUND FLOOR PLAN

0 5

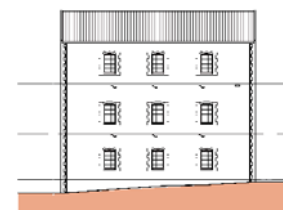


SITE PLAN

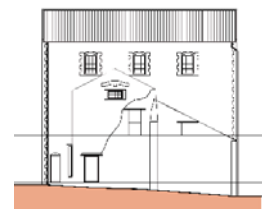
PROPOSED LEASE AREA



SOUTH WEST ELEVATION

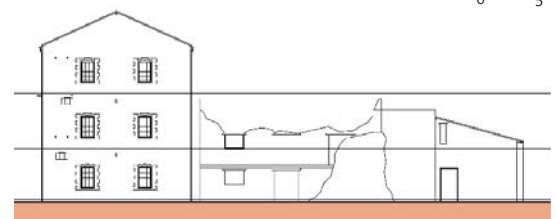


SOUTH EAST ELEVATION



NORTH WEST ELEVATION

0 5



NORTH EAST ELEVATION

Clinch's Mill

Lot Details

9 Gregory Rd, Greenough

Lease part of Lot 1 on Deposited Plan 49220

License for conditional access to other areas

2.11 hectares *approximate*

Heritage listings

State Register of Heritage Places number 01146

Municipal Inventory place 31 category 1

Use

Proponents are encouraged to discuss any proposals with the City of Greater Geraldton as well as the National Trust of Western Australia. The National Trust encourages compatible uses that respect the cultural significance of the place. All use proposals will be considered subject to planning and heritage considerations

Summary

Clinch's Mill, a late nineteenth century former mill complex built in the Victorian Georgian style, is partially intact and has an adjacent stabilised ruin. It has been vacant for many years.

It is significant for the following reasons:

The buildings form a component of an historic precinct characterised by a homogeneity of materials and forms;

it is believed to be the first purpose built roller mill constructed in Western Australia;

it was the first commercial flour mill to operate in Greenough;

the picturesque quality of the mill located within a rural landscape and its prominence as a local landmark contribute to the community's sense of place;

it demonstrates the changing aspects of Greenough's cultural and economic development;

it is valued for the aesthetic characteristics of its utilitarian, industrial form;

it is a component of an historic precinct characterised by a homogeneity of materials and forms;

it is associated with Walter Padbury and the Clinch family; and,

it has some potential to yield information that will contribute to an understanding of the history of flour milling in nineteenth century Western Australia

[State Register of Heritage Places Register Entry]

Plans & Drawings

'Conservation Plan' (2002) Palassis Architects

Site Plan

Floor Plans

External Elevations

The main building is generally in a fair condition however considerable work is required to bring it to a usable state. Power supply, communications, water supply and sewer/septic systems will require installation and/or upgrading depending on user requirements.