

Call for expressions of interest

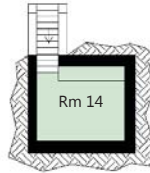
CLIFF GRANGE

GREENOUGH FLATS

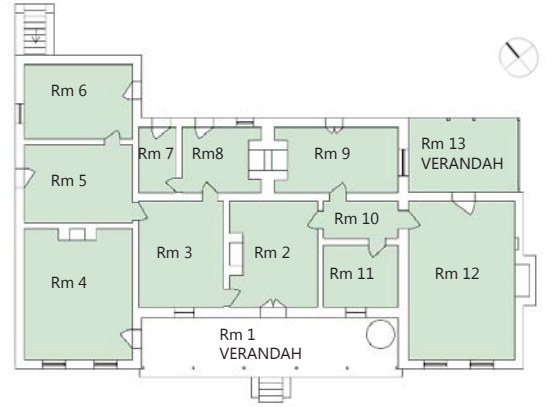
Redevelopment and Partnership Opportunity



VIEW FROM WEST

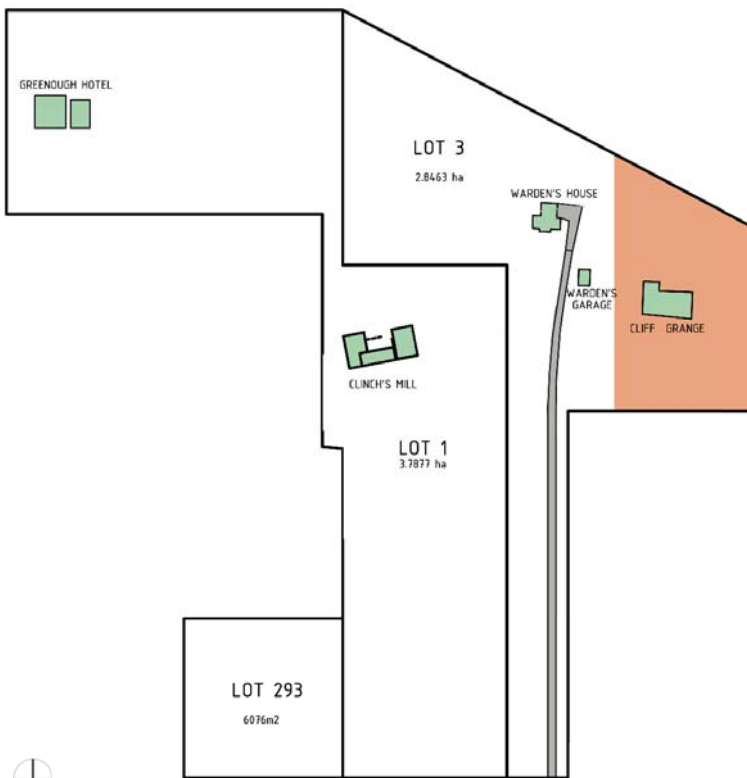


BASEMENT PLAN



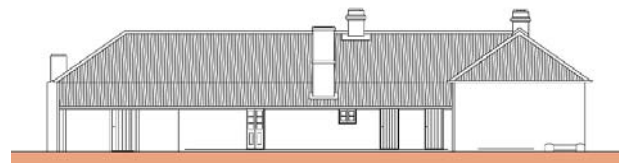
GROUND FLOOR PLAN

0m 5m



SITE PLAN

PROPOSED LEASE AREA



EAST ELEVATION



WEST ELEVATION

0m 5m

Cliff Grange

Lot Details

11 Gregory Rd, Greenough

Part of Lot 3 on Deposited Plan 64228

6,700 square metres *approximate*

Heritage listings

State Register of Heritage Places number 01154

Municipal Inventory place 32 category 1

Plans & Drawings

No Conservation Plan

Site Plan

Floor Plans

External Elevations

Use

Proponents are encouraged to discuss any proposals with the City of Greater Geraldton as well as the National Trust of Western Australia. The National Trust encourages compatible uses that respect the cultural significance of the place. All use proposals will be considered subject to planning and heritage considerations

Summary

Cliff Grange, a single storey late nineteenth century former residence, is a single storey limestone walled and iron roofed house with a cellar. It forms part of a complex of historic Greenough buildings built by Walter Padbury. It has been vacant for many years.

Cliff Grange is significant for the following reasons:

The place is a component of an historic precinct characterised by a homogeneity of materials and form;

It contributes to our understanding of development of this agricultural district;

The place is associated with Walter Padbury and the Clinch family; and

The place has archaeological importance.

Architecturally important as a large house of the 1870s, demonstrating the social habits of an established family in the district.

[State Register of Heritage Places Register Entry]

The main building is generally in a fair condition however considerable work is required to bring it to a usable state. There are currently no bathroom or kitchen facilities. Power supply, communications, water supply and sewer/septic systems will require installation and/or upgrading depending on user requirements.