



NATIONAL TRUST

# HERITAGE IN TRUST

*Journal of the National Trust of Australia (ACT)*

SPRING 2008 \$2.00



*Portrait of Captain James Cook RN 1782*

*by John Webber (c. 1752-1793)*

*oil on canvas*

*Collection: National Portrait Gallery, Canberra*

*Purchased 2000 by the Commonwealth Government with the  
generous assistance of Robert Oatley and John Schaeffer*



# National Trust 2009 Diary



**A** new ACT Heritage newsletter entitled '*Heritage Talks-bringing the past into the present*' was launched at the Glassworks on 15 August. Check out 'Heritage Talks' to find out what one does with a disused and obsolete electricity plant and what Canberran centenary is due for celebration this year.

Did you know that an hour's free advice is available from the Heritage Advisory Service for owners and purchasers of heritage properties?

Heritage strengthens community identity and pride and this newsletter will raise community awareness and provide advice, guidance and information on heritage matters.

The six monthly publication is available at ACT Libraries and Shopfronts and can be accessed at [http://www.tams.act.gov.au/\\_\\_data/assets/pdf\\_file/0008/118457/Heritage\\_Talk\\_31.7.pdf](http://www.tams.act.gov.au/__data/assets/pdf_file/0008/118457/Heritage_Talk_31.7.pdf)



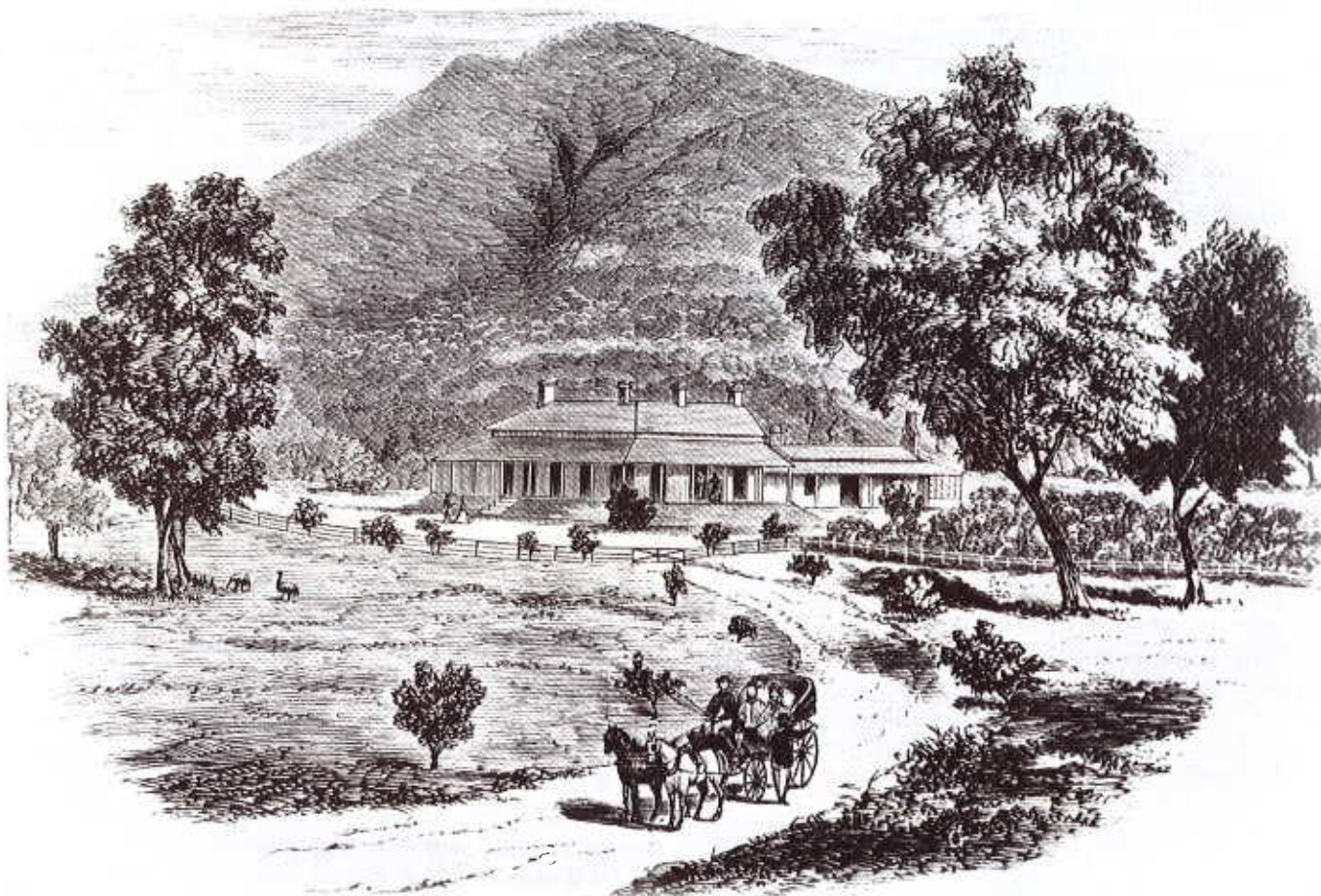
*The launch at the Glassworks*



# HISTORIC LANYON ON THE MURRUMBIDGEE

## HEART OF A COLONIAL PASTORAL EMPIRE

Don Chambers



*Lithograph of Lanyon Homestead, showing James Wright's original Lanyon homestead (circa 1841) behind Andrew Cunningham's grander mansion (from Sydney Illustrated News 1/9/1859)*

The earliest surviving artifact pertaining to Lanyon Station in the ACT is an 1834 sketch-plan of the area along the Murrumbidgee River where (from 1835) John Lanyon and James and William Wright would purchase land from the New South Wales government. That substantial block of river-frontage was illustrated on another plan (compiled for James Wright *circa* 1841) titled L'Anyon Station. As conceived by Wright, it stretched from Point Hut Crossing to the Tharwa crossing of the Murrumbidgee.

Even in John Lanyon's 1834 sketch, the station complex that would take his name was envisaged as base for a wider-ranging pastoral enterprise. The Murrumbidgee in the 1830s and early 1840s defined the official boundaries of settlement. Across the river, the Brindabellas and high Monaro were regarded as 'no-man's land', where institutions of British civilization could not reach. Native grasses grew there and cattle and sheep thrived, Aborigines and dingoes permitting. Not only did Lanyon's and Wright's purchases on the Murrumbidgee cut off 'the Lanyon hills' from stock water for potential rivals, but they provided a convenient 'jumping off point' to exploit limitless grazing opportunities among untamed hills.

After Lanyon's return to England and William Wright's early death, James Wright exploited that agricultural and pastoral potential. Wright's much-flogged Irish convict shepherds would tend sheep and fend off dingoes in cold mountain valleys beyond Michelago. They would eat vegetables and grind flour from wheat grown by unpaid convict labour on what Wright called 'the farm', on Lanyon's fertile flats. Wright aimed to make his wide-flung pastoral empire as self-sufficient as possible, by creating a dairying and agricultural hub at Lanyon.

The cessation of assigned convict labour in 1842 coincided with acute economic depression. Wright became insolvent and set up a new base across the river at Cuppacumbalong. His selections in what is now the ACT became the property of Andrew Cunningham. Cunningham picked up good land at depression prices, and prospered when the gold rushes turned beef and mutton into highly-valued commodities.

Cunningham's empire expanded widely so that his cattle freely roamed distant reaches of the Monaro in summer months. It would extend to Riverina properties, to the Forbes district, and even into Victoria. Cunningham's grand new Lanyon Homestead (built in gold-rush years) was the centre for a huge pastoral enterprise, rather than 'just another station homestead'.

*continued on p 14*



# CONTENTS

- 1 HISTORIC LANYON ON THE MURRUMBIDGEE**
- 3 FROM THE PRESIDENT**
- 3 EXECUTIVE DIRECTOR'S REPORT**
- 4 PEOPLE AND PLACES**
- 5 SHOP NEWS**
- 6 HERITAGE OFFICER'S REPORT**
- 8 TRAVELS WITH THE TRUST**
- 10 CRINIGAN'S STONE HUT**
- 12 THE EDLINGTON FAMILY AT DUNTROON DAIRY**
- 13 THE PRIME MINISTER'S LODGE: CANBERRA'S UNFINISHED BUSINESS**
- 16 EDUCATION**

## ANNUAL SUBSCRIPTION RATES

Joining Fee	\$35.00
Joining Fee, concession	\$25.00
Single	\$65.00
Single, concession	\$45.00
Household	\$95.00
Household, concession	\$70.00
2 year membership	5% discount
3 year membership	7% discount
Corporate	\$600.00
Life memberships	\$1200.00 H'hold \$750.00 Single

New members and renewal payments can be made by post, telephone or in person at our city office or the Old Parliament House Shop.

Cash, cheque and all major credit cards are accepted. Membership renewal reminders are generated one month before the anniversary of due dates.

The National Trust of Australia (ACT) is a non-profit, community-based organisation that aims to preserve Australia's heritage for future generations. Membership of the National Trust offers a number of benefits. Among them are:

- Free entry to National Trust properties around the world
- Complimentary copy of National Trust magazine(s) quarterly
- Discount of up to 15% at National Trust Shops
- An opportunity to participate in travel organised by the Trust
- Access to the National Trust's special events and activities
- An opportunity to help the Trust protect your local & cultural heritage

## OFFICE

PO Box 1144 Civic Square ACT 2608  
 Telephone 02 6230 0533  
 Fax 02 6230 0544  
 Email [info@act.nationaltrust.org.au](mailto:info@act.nationaltrust.org.au)  
 Net [www.nationaltrustact.org.au](http://www.nationaltrustact.org.au)  
 ABN 50 797 949 955  
 Opening times 9.30am to 4.30pm Monday to Friday  
 Office Location 1st Floor, North Building [above Canberra Museum & Gallery], entry from Civic Square, Canberra City

## SHOP

Shop Old Parliament House Shop  
 Address King George Terrace, Canberra 2600  
 Telephone 02 6273 4744  
 Email [ophshop@act.nationaltrust.org.au](mailto:ophshop@act.nationaltrust.org.au)  
 Opening times 9am to 5pm seven days a week

## PATRON

The Hon. Margaret Reid AO

## PRESIDENT

Eric J. Martin AM

## EXECUTIVE DIRECTOR

Dr Sue Chambers  
[sue.chambers@act.nationaltrust.org.au](mailto:sue.chambers@act.nationaltrust.org.au)

## HERITAGE OFFICER

Dr Peter Dowling  
[peter@act.nationaltrust.org.au](mailto:peter@act.nationaltrust.org.au)

## RETAIL MANAGER

Dianne Dowling  
[ophshop@act.nationaltrust.org.au](mailto:ophshop@act.nationaltrust.org.au)

## ADVERTISING & SUBMISSION ENQUIRIES

Office Manager, Patricia Sullivan  
[info@act.nationaltrust.org.au](mailto:info@act.nationaltrust.org.au)

## PUBLICATIONS GROUP

Chair - Dianne Dowling  
 Jenny Cox - Production  
 Dr Peter Dowling, Alan Kerr,  
 Maree Treadwell,  
 Patricia Sullivan, Sue Chambers

## CORPORATE MEMBERS

Old Parliament House Library  
 Eric Martin & Associates  
 Patinations Conservation  
 Services Pty Ltd  
 Travelscene Canberra City  
 Contentgroup  
 Slater & Gordon

## BENEFACTOR MEMBERS

Mr Rob McL. Johnston

## PHOTOGRAPHIC MATERIAL & IMAGES

Unless otherwise specified, images are printed with the kind permission of members and staff, and are not to be reproduced without authority.

## PUBLISHER

Heritage in Trust is published four times a year as a supplement to the National Magazine 'Trust News'

## COUNCIL

### PRESIDENT

Mr Eric Martin AM

### VICE PRESIDENT

Mr Peter Lundy RFD

### SECRETARY

Mr John McDonald

### TREASURER

Mr Arthur Pathmaperuma

Dr Sue Chambers

Mr Paul Cohen

Ms Helen Cooke

Mr Grahame Crocket

Mr Michael Hodgkin

Mr Alan Kerr

Mr Jim Nockels

Ms Linda Roberts

Dr James Warden

The Annual General Meeting on 21 October will elect a new council. One of the roles of the new Council will be to define the strategic plan for the Council over the next 3 years and this needs to consider new funding arrangements from the Australian Government. In the future, funding will come through the Australian Council of National Trusts and while it appears that it will remain at a similar level to that in the past it will come with a request to deliver certain outcomes related to National issues. While this may not result in any great changes it does mean that our funding base will change and we will need to budget for delivery of these specified outcomes and also budget for our normal operational requirements.

I have been pleased with the operation of the Council in the past year and I thank all Councillors for their participation and contribution. Alan Kerr has indicated he will not seek re-election so there will be further changes to Council. I thank Alan for his contribution particularly with the tours committee where he has tidied up our procedures to ensure responsibilities are clear and risks minimized.

I am pleased that we are also reviewing our corporate governance to ensure all procedures are appropriate and well defined. This is being led by Sue Chambers and will be of benefit to the organisation in the short and long term.

Over the past year we have had the opportunity of greater member contact through email news. We have found this of benefit to keep our members informed on activities and issues and we have also benefited from members' feedback. This has been especially useful for the promotion of the need to conserve the Tharwa Bridge and the Heritage at Risk

nominations. We hope that members appreciate this contact which will continue to be developed.

We have been discussing the arrangement of the National Trust volunteers at Lanyon with the ACT Cultural Facilities Corporation (CFC) as the current agreement was prepared in 1979. We are extremely appreciative of the role of our volunteers to the ongoing promotion of Lanyon and the added benefit of enabling appropriate purchases by the National Trust for Lanyon. This has also increased our asset base in our balance sheet which is evident in our annual report. We are prepared to discuss the whole situation with CFC given the extensive changes that have occurred since that initial agreement. We do not know what this review will produce but we will be keen to continue a role for our volunteers in conserving ACT heritage and that the role that our volunteers play is appropriately recognised in some way.

The other issue that we are discussing with the ACT Government is the ACT Heritage Library in its widest sense. There are a number of resources available to the ACT public within libraries including our own National Trust Library but there are also available the CDHS records, the ACT Heritage Library. The library in the ACT Heritage Section and the resources at the two Universities but there is no common understanding of what each has or a means for anyone to ensure they get all the relevant information about an item of ACT Heritage. Hopefully a coordinated outcome can evolve for the best outcome for ACT Heritage.

In closing I hope that you all have a merry Christmas and a prosperous 2009.

Eric J. Martin AM

## EXECUTIVE DIRECTOR'S REPORT

In a bid to increase the ACT Government's resources and interest in the protection of ACT heritage, we lobbied all political parties registered for the ACT election for their support to:

- increase funds for heritage grants to at least keep up with CPI adjustments;
- provide financial support to the ACT National Trust (as is the case for all other National Trusts in Australia);
- nominate Canberra for the Australian National Heritage List;
- re-establish the annual ACT Heritage Festival to coincide with World Heritage Day (April 18);
- develop a heritage strategy plan for the ACT (like other States and the Australian Government);
- ensure full and detailed cultural heritage surveys and assessments prior to the planning concept stage; AQND
- resource the completion of assessments of current heritage nominations within the next term of office.

The "National Trust wish list" – as the media have called it – will be checked against the new ACT Government's performance!

Another initiative has been to promote our membership – which is growing, but we think an incentive might help even greater participation. Our travel agent, Travelscene Canberra City, is donating \$2,500 annually towards a trip for two. Details of our 2008 Membership Lottery are provided in this magazine. The names of all financial members of the Trust will go into the draw for 2008 at the AGM. Details of the 2009 lottery will be provided in the next issue of Heritage in Trust.

Travelscene makes the arrangements for all of our tours which involve an overnight stay. We will advertise planned tours and take contact details of interested people (but no payment). Travelscene will make all other arrangements with the people who have expressed interest once it is agreed that a tour will definitely be taking place.

Our new Tours Committee Chair, Linda Roberts, provides more details on these initiatives and introduces the 2009 tour program in this issue.

We look forward to seeing you at our Christmas Get-together at Huntly and hope you enjoy the program of National Trust local tours and members events.

Sue Chambers



# PEOPLE AND PLACES

*This Members page is an information page for all current and prospective members of the National Trust ACT. Our aim is to pass on any information that may be of assistance to members and also to notify members of activities that have been organized by the various committees of the ACT National Trust.*

## NOVI SCRIPTI

The National Trust (ACT) warmly welcomes the following new members:

Brian Bailey	Anne Forrest
Mark Bayly	Jillian and Stephen Goggs
Donald and Julia Beattie	John and Judith Griffiths
Lara Boland	Liz and Alan Hendrickson
Peter and Karen Bradley	June Henson
Warwick Bradney Allen and Christine Brooke	John Madden and Alison Sewell
Graeme and Bronwyn Brown	Peter Marrinon and Fiona McCulloch
Jacqui Brown	Anne and Dave Meyers
Elizabeth Burness	Mike Mitchell and Bev Whitworth
Derek and Marguerite Carrington	Anne Smith
Robert and Jennifer Catt	Alan and Elaine Spooner
Mirek Ciolek and Anne Hazell	Judith and Paul Sutton
William and Dorothy Crichton	

## VOLUNTEERS LUNCH

Our lunch to thank our volunteers will be held at Mugga Mugga and we would like to thank to ACT Historic Places for their continued support in making the property available to us. For those who have not attended previously, there is ample room under cover, so the event will go ahead whether the weather be wet or dry.

An invitation will be sent to all those who have volunteered their time to assist the National Trust in the past twelve months. This luncheon is for you, in appreciation for giving up your free time for the National Trust. This event pays homage not only to National Trust Volunteers, but to members of the Trust who are volunteers at Lanyon, Calthorpes' House and Mugga Mugga.

Day: Tuesday  
Date: 9th December  
Time: 12 for 12.30

On receipt of your invitation could you please RSVP to the Office or the shop at Old Parliament House?

Also at this event we recognize those National Trust members who have volunteered for a continuous period of ten years or more. If you are one of these valuable people, could you please contact Dianne Dowling at the Old Parliament House Shop with your particulars?

## MEMBERS EVENING

### Visiting the Vikings

Mr Eric Martin, the President of the National Trust ACT, would like to invite our members and guests to 'Visit the Vikings', a presentation by Dr Peter Dowling. Peter was the group leader on a recent National Trust tour to Scandinavia exploring the history and archaeology of the Vikings. This 31 day tour included Viking sites in Denmark, Norway, Sweden (including the island of Gotland), and York (England). The tour also took in Finland and St Petersburg. During this tour the group was privileged to be one of the first to see the burial Viking ship 'Oseberg', the bodies buried in the vessel and then see the site mound where the vessel was found. Not only Viking sites were visited - the group saw the famous 2,400 year old bog bodies, Tollund Man and Elling Women, 4,000 year old stone burial sites and a two hour cruise through the World Heritage listed Fylkesbaatane Fjord in Norway. In St Petersburg the group visited the Palaces of the Russian Emperors, particularly those of Catherine the Great.

*Did the Vikings really have horns on their helmets? Come and find out.*

Place: Menzies Room  
Australian Archives, Queen Victoria Terrace  
Date: Thursday 29th January 2009  
Time: 5.30 pm  
Cost: \$10.00 members

New Members Free of Charge (new members will receive an invitation and we would ask them to RSVP by January 20th, thank you)

The Members Evening is an evening where new members are invited to join us to meet members of our Council and existing Trust members and to listen to a presentation by a guest speaker. The evening is prepared by the Members Committee and a small nominal fee is charged to cover the costs.

## Combined Charities Christmas Card Shop

The location of the Combined Charities Christmas Card Shop has changed again this year. The new location is:

**Theo Notaras Multicultural Centre**  
Second Floor, North Building (floor above the National Trust Office)  
London Circuit, Civic Square, Canberra.

Opening hours Monday to Friday 10.00am - 4.00pm  
Tuesday 7 October Friday 12 December 2008.

If there are any members out there who would like to assist as a volunteer in the shop either on the National Trust day or any other day could they get in touch with Dianne Dowling at the Old Parliament House Shop on 6273 4744.



Just a reminder our office hours are 9.30am to 4.30pm Monday to Friday. If any member has any query outside those hours they are quite welcome to contact the Shop at Old Parliament House which is open 9am to 5pm seven days.

## CHRISTMAS GET-TOGETHER

Don't forget our get together at 'Huntly'.

If you do not have transport or wish to relax for the afternoon we will be operating a bus service again for a small fee; so at the time of making your booking let us know if you would like a bus ride. The two pickup points are behind the shops in Deakin and in front of Civic Square on London Circuit. Look for a Rogers Coach.

Come and join us for a peaceful start to the hectic Christmas Season.

'Huntly' is just past the outer slopes of Mount Stromlo on the road to Uriarra Crossing, the entrance is on the right hand side of the road and there is a sign with the property name for all to see.

Why not come out and enjoy the afternoon wandering around this excellent oasis and relax in the peaceful surroundings.

Drinks and refreshments included.

Date: Sunday 30th of November 2008

Time: 3pm until 5pm

Cost: \$20.00 members

\$25.00 non members

Bus: \$10 for the return trip

We appreciate all the support John Gale gives the National Trust by opening his property to our member's as I am sure you will all appreciate the serenity of the surroundings.



### HAVE YOU CHECKED OUT OUR NEW WEB SITE?

We would welcome any comments and suggestions...  
[www.nationaltrustact.org.au](http://www.nationaltrustact.org.au)

## WOULD YOU LIKE TO DO MORE FOR THE NATIONAL TRUST?

The ACT National Trust has several committees to assist in the operation of the Trust. Included in this is the Members Committee which is a group of volunteers who meet at 5.30 pm on the fourth Wednesday of each month at the Old Parliament House Shop.

We do have vacancies and would welcome someone with new ideas and skills and willing to assist in the planning and organizing functions and activities for our members.

The National Trust (ACT) currently has about 1700 members which is the highest per capita membership of any State/Territory branch of the National Trust movement in Australia.

Would you like to be part of this committee?

## SHOP NEWS

It is with regret that I wish to advise of the death of Mrs Elaine Laver. Elaine has been coming in to the Shop since it opened in Old Parliament House in January 1996. She was always baking and would bring in little treats for our afternoon tea. Elaine was a well loved and respected volunteer and will be missed.

We would like to pass on our sympathy to her husband John, son John and daughter Joanne and their families.

The financial year ended with the Shop making a profit once again. We were slightly under budget but the final figure has been approved by Council. I would like to thank the staff and all the volunteers for their assistance in helping us to achieve our aims and also keeping the Shop working smoothly while I have been taking some time off.

We are still in negotiations with the management of Old Parliament House to address the visitation of schools to the Shop next year when the new Gallery of Australian Democracy opens.

Don't forget the specials from The National Portrait Gallery merchandise only while stock lasts. Don't miss out as there are some bargains.

National Trust diaries and Christmas cards are now available from the Old Parliament House Shop. The diaries are botanical images by Joan Phillips, and are always popular; my advice is to purchase early. I have ordered double the quantity from last year but as I said they are very popular so come in and select yours soon.

As this will be the last issue before the end of the year all our crew would like to wish everyone a Merry Christmas and a safe, prosperous and happy New Year, and look forward to seeing many of you in the shop in 2009.

## Trusted Recipes

### GINGER BEER

With the popularity of Ginger Beer on a commercial basis who out there can remember making a ginger beer plant and making their own ginger beer? Those quiet nights shattered by exploding bottles. Below is a recipe that is in excess of 60 years old and well tested.

#### Plant

Put in an airtight jar:

8 sultanas	2 cups cold water
4 teaspoons sugar	Juice 2 lemons
2 teaspoons ginger	1 teaspoon lemon pulp

Leave for 5 to 7 days in warm weather when it should ferment, then feed plant each day for a week with 1 teaspoon ginger and 1 teaspoon of sugar.

#### Ginger beer

Put in 2 gallon container (8 Litre container):

4 cups sugar	1 tablespoons honey
4 cups boiling water	Juice of 4 lemons

Stir till dissolved, then add juice of lemons. Strain ginger beer plant through a cloth, squeeze dry then fill bucket with cold water. Fill bottles, add 2 sultanas to each bottle. Cork tightly. Divide plant in half and commence to feed again adding 2 cups water.



# HERITAGE OFFICER'S REPORT



## VIKING TOUR

From 11 August to 11 September I acted as a group leader for the National Trust tour, 'Visiting the Vikings'. A group of twenty-five of us travelled through the Viking homelands of Denmark, Norway, Sweden then on to Helsinki (Finland), St Petersburg (Russia), finally finishing in the Viking settlement of York (England). While we visited many archaeological places and museums piecing together Viking history we also took time to visit other places of later and early historical significance. One major highlight of the tour was to see the famous Oseburg burial ship (AD 800) at the Viking Ship Museum in Oslo; then see the two skeletons interred in the ship at the Midgaard Historical Centre (Borre National Park); then visit to the actual mound in Vestfold county where the ship was buried. When the ship was first excavated in 1904 -1905 the skeletons were examined and then reburied on-site in 1948. Last year they were re-excavated and re-examined and put on public display. We were fortunate, not many visitors to Denmark have seen the three main elements of the burial – the ship, the skeletons and the mound.

A second major highlight was a visit to the Silkeborg Museum in Denmark to see Tollund Man and Elling Women - two Iron-Age bog bodies which have been naturally mummified. Some 2,400 years ago both these people were ritually killed by garroting and placed in a natural bog where their remains have been preserved. It was an eerie experience for the group looking into the face of Tollund man, a person from the Iron Age.

During the tour I had the opportunity to talk to several archaeologists working in museums throughout Denmark, Norway and Sweden and asked them about the current state of archaeological research. The general opinion was regrettably the same. There is a significant lack of research driven archaeological excavations in the three countries. Most excavations in recent years have been done as a response to building, road or infrastructure developments. In many cases an archaeological impact assessment is required before major a development and if cultural deposits are found during the development the planned work can be delayed or modified according the archaeological assessment. All the archaeologists I spoke to said that excavations are extremely expensive projects in Scandinavia and their respective University archaeological departments were struggling for

funding. While I am very well aware of such the same situation here in Australia, I was surprised to hear it from these archaeologists given the world-wide interest in Scandinavian archaeology and Viking history in particular. Hopefully this situation may change in the near future.



## OLD CANBERRA HOUSE

As you will know the National Trust, along with other organisations and individuals has for over eighteen months been actively advocating against the construction of the new Crawford School building at ANU linking it to Old Canberra House. Our concerns centred around the impact the new building will have on Old Canberra house and its grounds. The Trust completed several well-developed submissions against the proposed project based on the heritage significance of the area. Largely due to our objections the project was eventually passed on through the Department of Environment, Water, Heritage and the Arts to the Minister, Peter Garrett for his final decision. Regrettably, the Minister has approved the project and work on the building has commenced. This has been a great disappointment to the Trust as we strongly believe that the new building will have a strong adverse effect on Old Canberra House and the gardens.



## TRAVELS WITH THE TRUST



### GRANTS

The 2008/09 round of ACT Heritage Grants was announced in September. The Trust put in several applications for project funding but this year we were successful with only one. We received funding to conduct a comprehensive heritage assets survey of Pialligo, the area lying west of Pialligo Avenue and east of the Molonglo River. In the early nineteenth century European settlement period the area was part of Campbell's Duntroon Station. Since European settlement this area of Pialligo has been largely used for agrarian purposes. Today, the area is mainly made up of commercial nurseries, associated building and open fields. Recent airport upgrading, large office complexes and major road duplications have been developing on the eastern side of Pialligo Avenue and may in the future impinge upon the Sections west of Pialligo Avenue.

### HERITAGE @ RISK 2008

In the last issue (*Heritage in Trust* Winter 2008) we outlined the places we nominated for the 2008 Heritage @ Risk programme. Each year the state and territory National Trust put together a list of place which they have assessed as being under some form of risk which is likely to adversely affect their heritage integrity. From this list a national top ten places at risk throughout Australia are selected. Our nomination for the national top ten for 2008 is the Yarralumla Brickworks. Since it ceased operation in 1976 the kilns and infrastructure of the brickworks have been mostly neglected. Lack of regular maintenance of the structures by successive governments over the years has led to a continual deterioration of the entire fabric of the place. Early this year the ACT government called for tenders to develop the area but little progress has been made in the tendering and selection process. Also the government decided not to carry out an independent heritage assessment of the site or produce a conservation and management plan to guide the development. Meanwhile the slow but steady deterioration continues to this important historical and heritage listed place.

*The national top ten was publicly released on 18 October.*

### SPRING IN JAPAN

*April 2009*

Spring blossom, ancient temples, mountain landscapes, castles, magnificent seascapes – we've tried to include them all on this 15 day tour of central Japan!

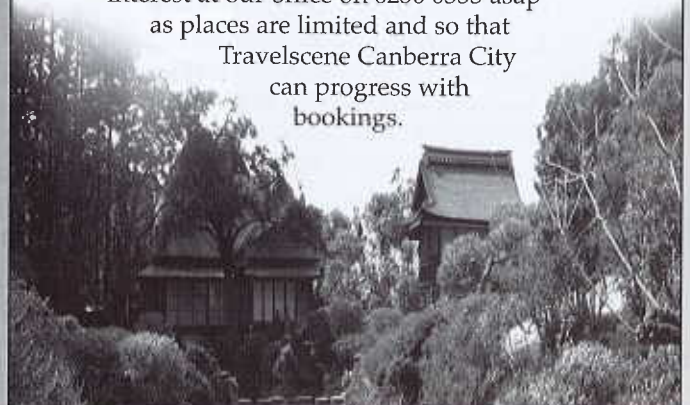
The tour starts in Kyoto, one of the former capitals of Japan, with its incredible variety of ancient temples and magnificent gardens. The spring blossoms in Kyoto are one of the famous sights of Japan. We will take day trips from Kyoto to nearby Nara, also a former capital city and the 'sister city' of Canberra, and Himeji to visit the best remaining castle in Japan.

The tour then will travel to Kanazawa, an important regional city on the north coast, famous for lacquerware and we will take a day trip by bus up to Wajima and seaside sites along the Noto peninsula. Then we head up into the mountains to Takayama (the name itself means 'tall mountains'), Shirakawago, Matsumoto (where we will visit another castle) and Nagano. We will also visit Magome and Tsumago, two villages on the 'Nakasen-do' the old highway from the northern provinces to Tokyo. There will be an opportunity for a leisurely stroll along part of the old highway through the mountain forests.

The tour will finish with two nights back in Kyoto with the opportunity to visit some of the famous temples and shrines and to do some shopping for souvenirs and Japanese craft items.

The cost for Trust members, including ALL fares, ALL accommodation, breakfast daily and 7 dinners and 7 lunches, is expected to be \$10,430 (non members \$10,5330); subject to any increases based on exchange rates and consumption tax changes imposed by the Japanese Government.

As this is a peak time to visit Japan, register your interest at our office on 6230 0533 asap as places are limited and so that Travelscene Canberra City can progress with bookings.





# TRAVELS WITH THE TRUST



## TOUR COMMITTEE NEWS

Are you booked in for our spring local tours? There's still time to register. And next year is shaping up as a great one for touring with the National Trust.

One of the roles of the Tours Committee is to discuss possible tours, both local and overseas, to benefit you our members. A group has just returned from Scandinavia and we look forward to hearing about their adventures. Register your interest for Spring in Japan or Great Cities of Eastern Europe departing in 2009.

Closer to home, churches is the theme for February and March will take you onsite highlighting last issue's article on the Molonglo Internment Camp. April is Heritage Month and activities are currently being finalised for our Heritage Festival 4 – 19 April—check out the next issue for details. Binalong and Cooma Mill will be a wonderful day out in May and we're not hibernating through winter, so stay tuned.

At the time of writing, the Central NSW Tour has just departed taking in Cowra, Blayney, Bathurst, the beautiful village of Millthorpe, Grenfell and Forbes, to name just a few places.

All financial members of the ACT National Trust will be in the draw for a \$2,500 island holiday, thanks to Travelscene Canberra City. Where will you choose: Lord Howe, Norfolk, Tassie or the Whitsundays? See you at the AGM on 21 October for the draw. Full details of the lottery can be found in this edition of the magazine.

**Linda Roberts**  
Chair, Tours Committee

Details of activities planned over the next few months are as follows:

### REID GUIDED WALK AND OPEN HOUSES

**Date:** Sunday 26 October 2008  
**Time:** 1.00-4.00 pm  
**Meeting Point:** Reid Heritage Sign at the corner of the Tennis Court and Currong Street  
**Cost:** \$20 members and \$25 non members (inc afternoon tea and Reid book)  
Limit 3 groups of 20

The National Trust, in collaboration with the Reid Residents' Association Inc, will conduct a guided walk in Reid and visit three homes from the 1920/30s. The afternoon will include short introductory talk about the heritage significance of Reid as a relatively intact example of a residential suburb planned on 'garden city' principles, followed by inspection of the houses. After the inspection of the houses, an afternoon tea will conclude the day's activities.

### BLANDFORDIA 5 GUIDED WALK

**Date:** Sunday 2 November 2008  
**Time:** 1.00-4.00 pm  
**Meeting Point:** The Lawns at Manuka (off Bougainville Street, adjacent to the pedestrian crossing)  
**Cost:** \$15 members and \$20 non members (inc afternoon tea)  
Limit 30

Eric Martin will introduce Garden City Planning in the Blandfordia 5 heritage precinct residents of Blandfordia 5 will then conduct a walking tour. The history and development of the precinct will be explored and various aspects of the precinct's heritage values will be identified. The walks will begin and end adjacent to the Lawns at Manuka. Afternoon tea will be included.

### THARWA AND LANYON GUIDED WALK

**Date:** Sunday 9 November 2008  
**Time:** 1.00-4.00 pm  
**Meeting Point:** Tharwa Bridge Reserve (corner of Tidbinbilla Road and Tharwa Drive)  
**Cost:** \$17 members and \$22 non members (includes afternoon tea).  
Limit 25

Tharwa and Lanyon have long been historically linked. This tour will highlight the history of both places. First, a walk along the Murrumbidgee from the Tharwa Bridge Reserve will trace Tharwa's history from Aboriginal occupation, through the pastoral period into recent times. Following this the group will meet again at Lanyon where its historical context as the head station of a large pastoral operation will be demonstrated. Afternoon tea at Lanyon is included.

Note: If the Tharwa Bridge is not open to vehicular traffic, then participants must take the Point Hut Crossing/Tidbinbilla Road route to Tharwa and then to Lanyon.





### 2008 HERITAGE AT RISK LIST BUS TOUR

**Date:** Sunday 16 November 2008  
**Time:** 1.30 pm – 4.30 pm  
**Meeting Point:** Old Parliament House  
**Cost:** \$25 members, \$30 non-members

Eric Martin and Peter Dowling will lead a bus tour of sites on the 2008 Heritage at Risk List. Further details on sites and route will be provided when the 2008 list is determined. The tour will be by bus and a Devonshire afternoon tea will be included.

### TOUR OF ST JOHN'S CHURCH, CHURCHYARD AND SCHOOLHOUSE MUSEUM

**Date:** Sunday 1 February 2009 from 1-4pm  
**Meeting Point:** St John's Church West door, Cnr Constitution Ave & Anzac Parade West, Reid  
**Cost:** \$15 members and \$20 non-members

Jean Salisbury, Honorary Administrator of St John's Churchyard, will conduct a tour of the historic memorials dating from 1844 to pioneer families, clergy, prominent military officers, politicians and public servants. This will be followed by a guided tour of the Schoolhouse Museum – Canberra's first schoolhouse built in 1845 by Robert Campbell of Duntroon for the education of workers' children. Now operating as a museum, visitors can see many interesting objects and photographs relating to St John's Church and Schoolhouse in the 19th and 20th century and early Canberra. Afternoon tea will be served.

### THREE CHURCHES AND CEMETERY OF HALL DISTRICT – HERITAGE TOUR

**Date:** Sunday 15 February 2009 2 - 3.30pm  
**Meeting Point:** Wattle Park Uniting Church, Barton Highway  
**Cost:** \$15.00 (members) \$20 (non Members)  
 Limit 20

Named after the first resident landowner of the Ginninderra district Henry Hall, many stories related to Hall Village will be related on this tour. After St Michael (1945) we visit St Francis Xavier (1910) and Wattle Park Uniting Church (1882), before learning about Hall Cemetery. Whilst proclaimed as a general cemetery in 1883 the first recorded burial was in 1907. A welcome afternoon tea will be provided at Gumnut Café.

### THE MAGICAL MOLONGLO MYSTERY TOUR

**Date:** Sunday, 15 March from 1-4.00pm  
**Meeting Point:** Top Molonglo Mall, Fyshwick (near Mustang Ranch)  
**Cost:** \$15 members and \$20 non-members

Author Alan Foskett will lead the tour through parts of Fyshwick industrial area, which 90 years ago, was the site of the Molonglo Internment Camp (191801920) and the Molonglo Building Workers Settlement. We will look at where the watchtower, hospital, the internment camp's military unit and tenements were that housed and protected the internees. A gentle 5 – 10 minute walk will take us up Radio Hill to see the only tangible remains of this unique part of Canberra's history. Afternoon tea at nearby Pialligo will finish off the tour.

**For reservations please ring the office on 6230 0533 or the shop on 6273 4744. Bookings are essential. Payment to be made at time of booking.**

**Travelscene**  
*Canberra City*

**Licensed Travel Agent, owned and operated by  
 Jetaway Travel Pty Ltd**

**A member of the Travelscene American Express Travel Group  
 Corporate Member of the National Trust of Australia**

We offer a one-stop travel shop with a full range of travel services including:

- international and domestic flights • great hotel rates • holiday packages • group tours • coach tours • cruises • car rentals
- rail travel • sight seeing • event tickets • travel insurance • travellers cheques • visa information etc

Lower Ground Floor, Ethos House  
 28-36 Ainslie Avenue, Canberra City

Open 9am – 5pm Monday to Friday  
 Saturday morning and after hours consultations by  
 appointment only

**Tel 6247 6544  
 Fax 6247 7638**

website: [www.jetaway.com.au](http://www.jetaway.com.au)  
 Email: [jetaway@jetaway.com.au](mailto:jetaway@jetaway.com.au)

**WINNER – Metropolitan Travel Agency of the Year 2002**



## TRAVELS (continued...)

### GREAT CITIES OF EASTERN EUROPE

Berlin, Warsaw, Prague, Budapest, Vienna



September 2009

The ACT National Trust in conjunction with Travelscene Canberra City is planning a tour of Great Cities in Eastern Europe. This tour will explore the life, culture, heritage and history of these cities. We will spend four to five days in each visiting the major museums, palaces, galleries, cathedrals while we make our through Eastern Europe. Guided tours of each of the city's highlights will be included but there will be ample free time to explore and sample the culture while you explore each city.

Final cost of the tour and itinerary will be available shortly.  
Limit 30

If you wish to come contact the ACT National Trust on (02) 6230 0533 to register your interest.

**Do you have an interesting article or a point of view that you would like published in the magazine?**

**If so, send it to  
[info@act.nationaltrust.org.au](mailto:info@act.nationaltrust.org.au)**

*Don't forget*

*All Members of the ACT National Trust receive 15% discount at the Old Parliament House Shop*

## CRINIGAN'S STONE HUT

### CRINIGAN'S STONE HUT, GINNINDERRA; NOW AT WANDERER COURT, AMAROO, ACT History of the Stone Hut

**J**ohn and Maria (nee Mansfield) Crinigan lived in a stone cottage near a pool of permanent water in Ginninderra Creek from about 1842 until 1863.

John was a native of Westmeath, Ireland and at 19 years of age was sentenced to transportation for life for "assaulting habitation". He arrived in the colony of New South Wales in 1836 and was assigned to work for George Thomas Palmer on his property Palmerville (the remains of the homestead are now under the Heritage Park in Giralang, ACT).

Maria, a free woman, arrived in NSW in 1832 and married John in 1842. They settled here in the stone cottage and in 1849 John was pardoned. He bought four parcels of land in 1859, including the block on which the cottage was built.

Ten babies were born to John and Maria Crinigan in this cottage. The only surviving child, Eliza Jane (known as Jane) was born in 1850 and married Duncan McInnes in 1867. They lived here in the cottage with the first four of their 13 children until about 1875.

The hut was then uninhabited and the land became part of a farm owned by the Cavanagh family. During this time parts of the cottage were probably recycled, such as some of the timbers and stone. By 1920s the house was a ruin, and all that remained of the cottage in the early 1990s was a pile of stones.

The land was resumed by the ACT Government for development of the suburb of Amaroo. The Crinigan descendants wrote to the Minister advising of the significance of the place to them. Subsequently the area of the cottage and the orchard was listed on the ACT Heritage Register in 1992 and planned into public open space.

The original Aboriginal inhabitants of this area have also left signs of their activities in stone artefacts found nearby and stone resources quarried not far from here at Girrawah Park in Amaroo.

### Conservation and study of the Stone Hut

The Canberra Archaeological Society received an ACT Heritage grant in 1993 to stabilise the remaining walls of the cottage so that visitors could experience the site. The fallen stone and a number of small brown snakes



*Eliza Jane McInness nee Crinigan (M. Folger collection)*





*Canberra Archaeological Society members excavating the ruins of Crinigan's Hut (M. Folger collection)*

had to be removed so that a stonemason could work on the walls. The risk of snake bites precluded any delicate excavation process, but CAS members and Crinigan family descendants systematically removed the stone and matrix, carefully retrieving artefacts and noting their locations. When the snakes had departed the spoil heaps were sieved and the artefacts carefully packed and stored.

The developer of the nearby suburbs then erected a chain link fence to protect the site while the adjacent roads and houses were built. Crinigan's descendants looked after the site and escorted school groups on tours for over 10 years.

#### **Crinigan's descendants and CAS members excavating the site warily, watching for snakes.**

Although life was hard and austere, artefacts found beneath what was once a wooden floor show that there was time for playing the mouth organ; women had some fine jewellery; wore patterned and pearl buttons; and the men wore some interesting buckled belts.

The family used a range of patterned china crockery and indulged in the odd alcoholic beverage. At times this

was more than just horehound beer, as contemporary newspapers record a brawl here in 1858 between Thomas Wells and Samuel Marley. Marley died from horrendous head wounds some 10 days later, after a bumpy ride on a dray to the nearest small hospital in Queanbeyan.

The Crinigans, like other early settlers, relied on their own produce as well as native animals. The archaeological excavations revealed evidence of cooked possum and bones of domestic animals such as pigs.

The artefacts have been quite well preserved under the mound of stone, including leather shoes and wooden door and window frames. The archaeologists and descendants continue to study the site and the artefacts so that the story of the Crinigans and other intrepid settlers in Ginninderra can be better understood in the future. If you would like to help with research, contact us through our website: [www.cas.asn.au](http://www.cas.asn.au).

CAS and the National Trust (ACT) received another ACT Heritage Grant in 2006/07 to repair the walls, remove the protective fence and erect a sign at the site.

#### **The Stone Hut site after conservation of the walls.**

The many descendants of John and Maria Crinigan are pleased that the Stone Hut ruin shares a park with a playground and the sign helps to show visiting families that Canberra is not a place without history and a soul.

#### **INVITATION TO OPEN DAY**

The official opening of the Crinigan's Stone Hut sign will be held at a Family Fun Day on Sunday 23 November 2008 from 11am to 3pm, in the park on Wanderer Ct, Amaroo. There will be bush bands and dancers and Rotary will have food and drinks for sale.

**CAS, the National Trust and the Crinigan's descendants look forward to seeing you there.**



*Crinigan's Hut ruin showing reconstructed and capped wall footings (P. Dowling 2008)*



# THE EDLINGTON FAMILY AT DUNTROON DAIRY,

## ORAL HISTORY TRANSCRIPTION PROJECT

Margaret Park

### THE INTERVIEWS AND TRANSCRIPTIONS:

In 2003 the ACT National Trust, funded by the ACT Heritage Grants Program, conducted a series of oral history interviews with the Edlington family.

This family's connections to the Canberra district extend back to the mid-nineteenth century. The focus was on the family's knowledge and memories of living and working at the Duntroon Dairy.

The importance of recording for posterity can't be over-emphasised. This process not only captures the voices of the people who were here in the early days of the territory, it also demonstrates the lifestyles and working habits of the people who contributed to the district's heritage over the last 100 years. In order to ensure that their voices are still heard today, it is equally important to provide an access point into their stories. By transcribing the interviews and making them available to the public alongside the recordings, we hope to encourage researchers of all ages and interests to dig further into the past and develop an understanding of what it was like to farm, raise cattle and sheep and live in dwellings which did not always have the comforts we are familiar with today. The Edlingtons and other families like them experienced the highs and lows of living through good times and bad, including droughts, bushfires, floods and inclement weather.

### WHO DID WE INTERVIEW:

The descendants of Charles and Jennet (daughter of Joseph and Elizabeth Mayo who lived at the dairy which was also known as "Mayo's Dairy") were interviewed at their homes or at the site of the Dairy.

Allan Edlington	Son of William Edlington, son of Charles and Jennet Edlington
Donny Tracey	Son of a daughter of Charles and Jennet Edlington
Jane Edlington	Granddaughter of Charles and Jennet Edlington
John Edlington	Son of William Edlington, son of Charles and Jennet Edlington

In 2007 the ACT Heritage made grant funds available to the ACT National Trust to transcribe these 2003 interviews thereby re-opening the voices of the Edlingtons, one of Canberra's pioneering families.

### John Edlington at Duntroon Dairy as recorded in November 2003:

*"This would hold 40 cows, you know - 20 each side. That's where we'd feed 'em... and then there was a period probably in the hot weather in February that we'd have to feed... When the cows came in of an afternoon the first 40 would go in as soon as they walked in, you know. And then the other lot would come up and be milked. They were held in a yard and by that time the 40 that's in there would be finished. They'd be let out and come up and milked and then the rest of them go in... [we fed] chaff, crushed oats... [used an additive which] we used to buy it in at the abattoirs - stinkin' stuff... it'd boost production. [The milk] went to the factory over there near the railway station. It used to be called the milk depot... The other dairies - well, there was 13 of 'em here at one stage - Cargill's place was straight across here - old Dave Cargill's... Straight across the river on the flat, and then the next one was Kelly's and then the next one was Frederickson's, and then Stewart's and then Gouges - George Gouge. That's over that side. Then down near the aerodrome was Bill Bruce, and down at Fyshwick there was Peter Broderick's. That is the Duntroon Dairy - not this. That is always known as the Duntroon Dairy... There used to be one straight across the road from the aerodrome - the hangars. You'd drive round the back. It's called Pialligo now. We used to call it Fyshwick years ago but it's called Pialligo now. There was a dairy there. It was Barry's and then - people by the name of Barry who I didn't know. But then Broderick Brothers bought it."*

(the transcripts are in our library and available to members)



Conservation & Restoration of  
Fine Antique Furniture

Professional conservation and  
restoration services for antique furniture,  
interiors and related materials.  
Insurance, museum and private work with  
particular emphasis on minimal  
intervention.

10% discount for National

Trust members

Member of the Australian Institute of  
Conservators of Cultural Material,  
Authorised Conservator to the National  
Trust of Australia ACT & Approved  
service provider of the Antique  
Dealers Association of Australia.

[www.patinations.com.au](http://www.patinations.com.au)

Phone: 02 6260 1112  
Unit 4/157 Gladstone Street Fyshwick



AICCM





## HISTORIC LANYON (continued from p.1)

To grasp the historical significance of Wright's convict-built courtyard and its 'old kitchen' with bell tower and the big barn nearby, and of Cunningham's later grand homestead and added buildings, one needs to understand this 'pastoral empire' context. It lasted from the mid-1830s until World War I—some eighty years. For space reasons, I concentrate on the limited period up to Andrew Cunningham's death in 1887—half a century.

The hey-day of James Wright's agricultural and pastoral enterprise was in the years 1838 to 1841. He then constructed the earliest stone 'homestead', known as 'the old kitchen'. I date it to 1838, when Wright's bride arrived from Sydney and references to a station bell appear in convict records. He also constructed a courtyard complex of convict-built farm buildings, and the large stone barn beside the creek. In 1841 I believe that he completed the family homestead, shown behind Cunningham's mansion in an 1869 lithograph. By 1842, with the unpaid convict work-force gone, and confronting bankruptcy, Wright was in no position to build at Lanyon.

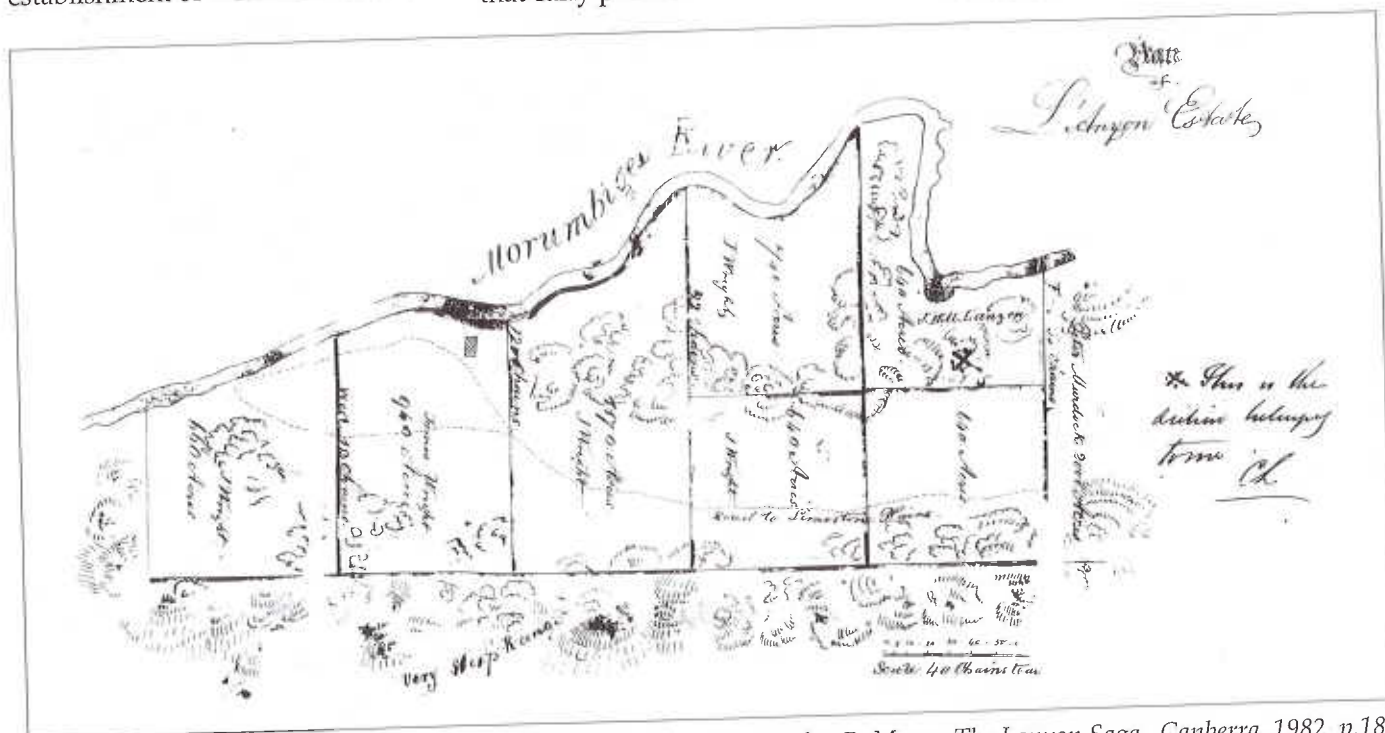
During that 'heyday' Wright's large establishment of convict labourers



Modern photo of old Lanyon courtyard complex featuring 'The Old Kitchen' with bell tower (National Trust ACT collection)

tended many sheep running among the hills on both sides of the river, and also tended the sizeable dairying operation and wheat fields of 'the farm' on the Murrumbidgee's banks. Wright's early fieldstone buildings and courtyard appear to be based on models from the Derbyshire farming background of his overseer (Thomas Locker). His completed stone Lanyon Homestead, with its substantial detached 'old kitchen', represented a better-class 'squatter' dwelling of that early period.

The bell in its little tower on the old kitchen could be heard for miles around, and was cursed by weary convicts stirred from sleep to labour in the cold and dark. The barn on the creek provided winter shelter for Wright's more valuable livestock, as well as somewhere to store wheat and probably other farm produce like potatoes and turnips. It was never the convict 'gaol' of later legend, but Andrew Cunningham's children invariably ascribed this building to the convict era that



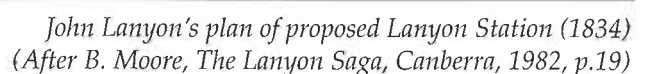
Plan of Lanyon Estate, produced for James Wright, Circa 1841 (After B. Moore, *The Lanyon Saga*, Canberra, 1982, p.18)



In 1858 he moved into the Riverina, tendering to lease distant Buryjaa Run of about 18, 000 acres. In 1859, he shared the lease for a run at East Charlton in Victoria, and in 1860 he added almost 5000 acres of freehold at Guise's Flat and Williamsdale. When Robertson's Free Selection Act became operative in 1861, Cunningham used loyal station workers and friends to 'dummy' for

John Lanyon's earliest vision of 'L'Anyon Estate' as home station for a wide-flung pastoral empire had reached fruition. Think about the multitudinous enterprises once run from Lanyon Homestead's office – and spare a thought for Wright's much-flogged convicts.

Ray, P., 'Lanyon', Report to the Lanyon Restoration and Acquisition Committee, 1982.





## EDUCATION

Since the August issue on education, the launch of the publications from the ACT Trust 2005 and 2006 heritage competitions and the ACT Award Presentations for the National History challenge have been held.

### LAUNCH OF PUBLICATIONS: CONNECTIONS AND LIVING TREASURES.

The launch of these publications from the 2005 and 2006 Heritage competitions for Children and Youth was held at the (former) Hall Primary School. These competitions were made possible through an ACT Government CUPP grants in conjunction with a Department of Urban Services partner, the Heritage Unit for Connections and the ACT Heritage Library for Living Treasures. Children were asked to interview older members of community about the heritage they valued in the ACT and region.

The event was attended by entrants, their families and the older people they interviewed. Hall Progress Society assisted the event and Elizabeth Burness, one of the judges for both competitions, interpreted the past life at Hall Primary. Photos from the event will be published in a future edition of Heritage in Trust.

### NATIONAL HISTORY CHALLENGE 2008 - UPDATE

The ACT National Trust, a sponsor of the National History Challenge, participated in the Award Ceremony for the ACT finalists of this year's National History Challenge Australia meets the world. The competition deadline was 15 August, and throughout the country teachers and representatives of the sponsors, including the National Trust, spent long hours determining the State winners of the year levels and special categories. These winning entries, including the special categories, were judged at the National Judging Day held in Brisbane during September. A national winner was also selected for the Trust's special category, Australia's Heritage. The national presentations will be held on November 25th at Parliament House in Canberra. The ACT winning entry will be featured in the next issue of Heritage in Trust and posted on our website.



### DO YOU HAVE A FRIEND TRAVELING OVERSEAS?

**Tell them about the advantages  
of joining the National Trust including  
free entry into over 2000 National Trust  
Properties around the world.**



## JOIN THE NATIONAL TRUST (ACT)

**The National Trust is a non-profit, community based organization that aims to preserve Australia's heritage for future generations. Membership of the ACT National Trust offers a number of benefits, among them are:**

- Free entry to National Trust properties around the world
- 15% discount at the Old Parliament House Shop
- An opportunity to participate in travel organized by the Trust
- Access to the National Trust's special events and activities
- An opportunity to help the Trust protect your local natural and cultural heritage

## NATIONAL TRUST OF AUSTRALIA (ACT) MEMBERSHIP LOTTERY 2008

### TERMS & CONDITIONS

- How to enter the lottery – all financial National Trust (ACT) members on the day of the AGM will be included in the draw.
- Start and closing date – 21st October 2008
- Time and date of the draw – 8pm, 21st October 2008
- Address of the draw – Albert Hall, Commonwealth Avenue, Canberra
- Prize details - \$2,500 towards a trip for two to an Australian Island. The trip is to be arranged with Gay Boersma at Travelscene on 6247 6544, with booking before June 30th 2009, and travel before October 1st 2009.
- The winner will be notified by phone, email or mail (whichever is appropriate for the member), and published in the Canberra Times on October 25th.
- Name of Promoter – National Trust (ACT), CAN 008 531 182
- Redraw arrangements – in the unlikely case that the winner is unable to be contacted, a redraw will take place on Thursday 29th January 2009 at the Members Evening, Menzies Room, National Archives, Queen Victoria Terrace, Parkes, ACT 2600 at 7pm.





◀ The launch of the sign at Girrawah Park



◀ ACT Heritage Grant Launch



Changing your address?

Return this sheet with your new address.

If undeliverable please return to

National Trust of Australia (ACT)

PO Box 1144

Civic Square ACT 2601

Print Post Approval PP349181/00414

[www.nationaltrust.act.org.au](http://www.nationaltrust.act.org.au)



NATIONAL TRUST

PRINT  
POST

POSTAGE  
PAID IN  
AUSTRALIA

## ACTIVITIES

Full details are listed inside the magazine for the following activities

### SPRING HERITAGE WALKS

REID GUIDED WALK AND  
OPEN HOUSES

26 October 2008

BLANDFORDIA 5 GUIDED  
WALK

2 November 2008

THARWA AND LANYON  
GUIDED WALK

9 November 2008

### 2008 HERITAGE AT RISK LIST BUSTOUR

16 November 2008

TOUR OF ST

JOHN'S CHURCH,  
CHURCHYARD AND  
SCHOOLHOUSE  
MUSEUM

1 February 2009

### THREE CHURCHES AND CEMETERY OF HALL DISTRICT - HERITAGE TOUR

15 February 2009

### THE MAGICAL MOLONGLO MYSTERY TOUR

15 March 2009

### SPRING IN JAPAN

Two week tour starting  
in Kyoto and including  
Kanazawa, Takayama, the  
Noto Peninsula, Matsumoto  
and the Nakasendo walk  
from Magome to Tsunago  
April 2009

### GREAT CITIES OF EASTERN EUROPE

Berlin, Warsaw, Prague,  
Budapest, Vienna  
September 2009