



NATIONAL TRUST

HERITAGE IN TRUST

Journal of the National Trust of Australia (ACT)

SPRING 2007 \$2.00



Tharwa Bridge

Our Heritage...



Some new
Some old
Some gone
Some threatened
Some still with us

CANBERRA'S DRILL HALL GALLERY

een associated with the
civilian militia (reservists)
o major periods of Drill
the worsening political
up to the First and Second
cerned with the history
ocated on the ANU
ow known as the Drill
on the Commonwealth
) and is also listed on
l the Royal Australian
nt Twentieth Century
9).

ory military training in
it (1929-1932) the idea
part-time militia became
alia's army forces. The
ime based defence system,
id the economic influences
that Australia's civilian
the early 1930s with Grey
have met standards for

improvement in the
rsening political situation
began to realise that
led to be increased. By the
l begun to increase and
pulsory military training
e Australia's militia force
hese policies led to an
ll halls constructed in the

Generally, "the group of drill halls designed in the late 1930s was intended to provide accommodation in each military district for physical training of both the military and militia, as a large-scale recruiting drive began and compulsory service was reintroduced prior to World War II. Physical training was to be a key part of the program and drill halls were to be equipped with gymnasium facilities in addition to attractive features which would also enable them to function as social centres". These inter-war Drill Halls are generally characterised by brick construction with a double height main hall with attached offices, storerooms, Officers' and Enlisted Men's messes, associated parade ground and auxiliary buildings.

As early as 1928 there were calls for a Drill Hall in the Australian Capital Territory. By 1937 the site on Kingsley Street was chosen and E.H. Henderson, Chief Architect for the Department of the Interior (1926-1936) put forward the initial building designs. The Drill Hall building was to contain a drill hall, mess accommodation, offices and stores. The Drill Hall was completed on the 12th April 1940 for a cost of £9,637, with control of the premises passing to the Army on the 10th May 1940.

The Canberra Drill Hall complex consisted of the Drill Hall, ancillary sheds located to its rear, a parade ground located to the north and a caretaker's cottage constructed between 1947 and 1950. Currently only the main hall remains. The caretaker's cottage was removed in 1995 due to safety reasons. The area that was once the parade ground is now taken up by the Toad Hall student residence.

Records indicate that up to the start of 1947, the Drill Hall was being used by the School Cadets, Air Training Corp, Returned Sailors', Soldiers' and Airmen's Imperial League of Australia (RSSAILA) and the YMCA. After



CONTENTS

- 1 CANBERRA'S DRILL HALL GALLERY**
- 3 FROM THE PRESIDENT**
- 6 HERITAGE TODAY**
- 8 TRAVELS WITH THE TRUST**
- 12 A THANKS TO CONTENTGROUP**
- 13 U3A**
- 13 STONEHENGE**
- 14 COLONEL KATHLEEN BEST MEMORIAL GATES**

ANNUAL SUBSCRIPTION RATES 2007

| | |
|-------------------------|--------------------|
| Joining Fee | \$33.00 |
| Joining Fee, concession | \$25.00 |
| Single | \$55.00 |
| Single, concession | \$40.00 |
| Household | \$80.00 |
| Household, concession | \$60.00 |
| 2 year membership | 5% discount |
| 3 year membership | 7% discount |
| Corporate | \$500.00 |
| Life memberships | \$960.00 Household |
| | \$660.00 Single |

New members and renewal payments can be made by post, telephone or in person at our city office or the Old Parliament House Shop.

Cash, cheque and all major credit cards are accepted. Membership renewal reminders are generated one month before the anniversary of due dates.

The National Trust of Australia (ACT) is a non-profit, community-based organisation that aims to preserve Australia's heritage for future generations. Membership of the National Trust offers a number of benefits. Among them are:

- Free entry to National Trust properties around the world
- Complimentary copy of National Trust magazine(s) quarterly
- Discount of up to 15% at National Trust Shops
- An opportunity to participate in travel organised by the Trust
- Access to the National Trust's special events and activities
- An opportunity to help the Trust protect your local & cultural heritage

OFFICE

PO Box 1144 Civic Square ACT 2608
 Telephone 02 6230 0533
 Fax 02 6230 0544
 Email info@act.nationaltrust.org.au
 Net www.act.nationaltrust.org.au
 ABN 50 797 949 955
 Opening times 9.30am to 4.30pm Monday to Friday
 Office Location 1st Floor, North Building [above Canberra Museum & Gallery], entry from Civic Square, Canberra City

SHOP

Shop Old Parliament House Shop
 Address King George Terrace, Canberra 2600
 Telephone 02 6273 4744
 Email ophshop@act.nationaltrust.org.au
 Opening times 9am to 5pm seven days a week

PATRON

The Hon. Margaret Reid AO

PRESIDENT

Eric J. Martin AM

EXECUTIVE DIRECTOR

Mrs. Dianne Dowling
dianne.dowling@act.nationaltrust.org.au

HERITAGE OFFICER

Dr Peter Dowling
peter@act.nationaltrust.org.au

ADVERTISING & SUBMISSION ENQUIRIES

Office Manager, Patricia Sullivan
info@act.nationaltrust.org.au

PUBLICATIONS GROUP

Chair - Dianne Dowling
 Jenny Cox - Production
 Dr. Peter Dowling, Alan Kerr, Maree Treadwell,
 Gillian Ferguson, Patricia Sullivan

CORPORATE MEMBERS

Old Parliament House Library
 Eric Martin & Associates
 Patinations
 Travelscene
 Contentgroup

BENEFACTOR MEMBERS

Mr Rob McL. Johnston

PHOTOGRAPHIC MATERIAL & IMAGES

Unless otherwise specified, images are printed with the kind permission of members and staff, and are not to be reproduced without authority.

PUBLISHER

Heritage in Trust is published four times a year as a supplement to the National Magazine 'Trust News' with financial assistance from the Commonwealth Department of Environment and Water.
 ISSN 0727 - 9019 C 2006

PETER BOERSMA 1947 - 2007

The ACT National Trust extends its deepest condolences to Gay Boersma and daughters, Jenny and Lauren, over the sad loss of their husband and father Peter who recently passed away after a long struggle with cancer. Peter, along with Gay, directed Travelscene Canberra City. Over the past three years Gay and Peter and their staff have efficiently managed National Trust overseas tours to Turkey, Egypt and Greece as well as local tours. While travelling in these wonderfully exotic places I have always felt safe and reassured that we have had an expert and responsive team at home to help us if in need. Travelscene Canberra City, a corporate member of the ACT Trust, is the Trust's preferred travel agent and will be managing us on more adventures in the future - next year to Turkey and Scandinavia. Peter's quiet but professional presence will be sadly missed by all of us here in the office and those members of our tours who knew him.

Peter Dowling
On behalf of the
ACT National Trust



FAREWELL AND THANK YOU TIFFANY

We would like to say a huge thank you to Tiffany Manning for all her time and tireless work in collating all the material for our magazine. Tiffany was trying to help us with the magazine, start a degree course at the ANU and also look after a ménage of waifs on her property in the country.

It has been a long association with the National Trust and Tiffany and we wish her all the best for the future and her studies. Tiffany has now begun working on our photographic library.

We would like to welcome Jenny Cox back into the fold. Jenny used to organise the magazine back in the 1980's.

PRESIDENT'S REPORT

We are pleased to advise members that we have had a very successful year in 2006/2007 with a substantial profit year in 2006/2007 in excess of \$100,000 partly due to a re-evaluation of stock and an increase in membership which is most encouraging.

We now have a full council membership and a treasurer Arthur Pathmaperuma and well known planner Paul Cohen who also chairs our Heritage Committee. Our AGM was held on the 1st of November and we are confident that with a full Council membership it will be pleasing to move toward 2008 in a strong position.

Heritage issues continue to dominate the local news and it is pleasing to see that Canberra's National Heritage finally being seriously considered by the National Capital Authority. Although this study was commissioned some time ago and faltered in 2006 it appears to have been recommissioned and we look forward to appropriate public consultation and a solid consideration of Canberra's heritage values. The National Trust strongly believes there are world heritage values in our city as a unique place of garden city planning emanating from Walter Burley Griffin and continued by other planners including the National Capital Development Commission. It is critical that these values are defined and planning instruments put in place to protect these heritage values before wholesale development changes it. Canberra has unique values which other cities strive for yet some of these are being whittled away by ideas that Canberra should follow other international cities. Canberra can successfully manage a higher population without high rise buildings in the city or destroying sensitive areas or filling in all our open space. The complimentary studies of Lake Burley Griffin and the Parliamentary Vista are also moving forward and it is equally important that these articulate the heritage values and put in place strategies to protect them before they are threatened by unsympathetic development.

Another major threat of great concern is the potential loss of Tharwa Bridge, an Allen Truss bridge of National Engineering Heritage Significance but there are grave concerns about its possible demolition. We hope sanity and concern for our heritage can see it saved.

The pressures on our heritage are constantly present as evidenced by our Heritage at Risk program and I hope the National Trust can continue to play a strong and vital role in the ACT Community.

Eric J. Martin AM
President

2007 COUNCIL

PRESIDENT

Mr Eric Martin AM

VICE PRESIDENT

Mr Peter Lundy RFD

SECRETARY

Mr John McDonald

TREASURER

Mr Arthur Pathmaperuma

Ms Helen Carlile

Mr Paul Cohen

Ms Helen Cooke

Mr Grahame Crocket

Mrs Dianne Dowling

Mr Michael Hodgkin

Mr Alan Kerr

Mr Jim Nockels

Ms Adele Rosalky

NOVI SCRIPTI

The National Trust (ACT) warmly welcomes the following new members:

| | |
|--|----------------------------|
| Helen Bessy | Tania Keath |
| Sharon and Denis Blight | Narelle Kelly |
| Wayne and Nerriann Bullman | Lesley and Joanne King |
| Glennah Castle | Gary and Linda Klintworth |
| Stephen Christie | Annette and Michael Lacey |
| Sylvia Cox | Betty Loseby |
| Christopher Crane and Vivian Cabalda-Crane | Jeannette McHugh |
| Gary Estcourt | Virginia Passmore |
| Ian and Illona Fraser | Arthur Pathmaperuma |
| Robyn and John Geary | Herbert and Kerry Plunkett |
| Susan Hall | Alan Roberts |
| Ann Heenan | Anne and Nicholas Rundle |
| Tammy Hermann | Felicity Rundle |
| Dorothy Howard | Peter and Bridget Sack |
| Mathew and Elizabeth Irving | Roger and Susan Smyth |
| | J Wayne and E Sedgley |
| | Donald and Sue Witheford |

VOLUNTEER OF THE YEAR

Mrs Joan Pitt was named the 2007 Volunteer of the Year at the AGM on the 1st of November. Joan has volunteered every Saturday and every second Tuesday for up to 5 hours in the Trust's shop at Old Parliament House for over 18 months. Joan also regularly fills in on Mondays and Tuesdays when the rostered volunteers are unavailable, even staying all day if necessary.

Joan's interactions with customers are always very friendly and helpful. She offers advice on, and actively encourages, purchases, and promotes the work of the Trust just as readily. Joan's unfailing courtesy and passion for history and its tangible preservation is a great asset to the Trust and enhance every customer's experience of the Trust through their visit to the shop at OPH.

She loves to be busy, and is just as happy chatting to customers as she is filing invoices in the office, pricing new stock, tidying the shelves, making suggestions to display stock to greater advantage or suggesting items that could be sold in the shop.

As a retired accountant, Joan is aware of the effects of incorrect transactions, so she is very careful about using correct stock numbers, checking pricing, counting very carefully at stocktake and advising shop staff about anomalies to be corrected.

She is not only generous with her time. She also crochets small multipurpose bags which she donates for sale at the OPH shop.

Don't forget to make your nomination for Volunteer of the Year for 2008. Call the shop or the office to obtain further details.

This Members page is an information page for all current and prospective members of the National Trust ACT. Our aim is to pass on any information that may be of assistance to members and also to notify members of activities that have been organized by the various committees of the ACT National Trust.

MEMBERSHIP COMMITTEE

The Membership Committee was started by Garth Setchell in 1999 to organize social functions for Members. Although the primary purpose of this committee was not fundraising, a charge for members attending functions has usually been levied in order to cover the cost of expenses and any profits made during the year go towards the running of the ACT Trust. One of our main activities has been the annual lunch to thank all the local National Trust Volunteers who have helped in the OPH Shop or worked as guides in ACT Historic Houses or assisted the Trust in any other way.

My sincere thanks go to Rosina Akhurst, Pam Behncke, Rita Bishop, Dianne Dowling, Anna Moreing, Viggo Pedersen and Maree Treadwell who were the original members of the committee and have catered for Members' Nights, Christmas Parties and Volunteers' Lunches, and organized other events over the past eight years. It has been a lot of fun working together for so long. We welcomed and have much appreciated the additional help of Adele Rosalky a couple of years ago, and Bev Findlayson this year.

Unfortunately some of our original members have had to resign recently because of family reasons, so if you would be willing to join this friendly group of volunteers who work to provide social interaction between National Trust members, please contact me (or leave a message) at the Old Parliament House Shop on 6273 4744.

Margaret Howard
(Chair of Membership Committee)

MEMBERS AND FRIENDS EVENING

Many of our new members enjoyed the presentation from Dr Peter Dowling on the recent National Trust Tour to Greece. The tour covered the history and archaeology of Ancient Greece and included the Minoan and Mycenaean civilizations. It is unfortunate that the timing of these events is so short, I am sure that Peter would have liked to speak for longer. The information that he did give us gave us a good look at a brief history of Greece and the accommodation at Mykonos must have really been a luxury sitting outside looking over the brilliant blue water of the Mediterranean Ocean.

We are very much aware of the destruction and hardship the fires have caused in Southern Greece and really appreciate the beauty that that was shown in Peter's presentation.

MEET YOUR PRESIDENT AND COUNCIL

Our President and members of our Council were in attendance at the 'The Beehive' in Bungendore.

We would like to thank Eric and Geraldine for opening the doors and coping with the curiosity of the visitors who invaded their family home.

This 1859 inn is substantially intact and harbours an interesting history. Eric operated guided tours of the house and had artefacts on show which were uncovered during recent extensions. The weather was perfect for sitting outside and enjoying the afternoon tea provided by the membership committee members and Geraldine, who is now an expert on cup cakes.

CHRISTMAS DRINKS

Don't forget the afternoon out at John Gale's property 'Huntly'.

The bus will operate again this year for a small fee, so why not take advantage of the hassle free ride. We can organize for a pick up at either Civic Square or the car park behind the Deakin shops. If there is enough demand we can also organize a pick up in the Belconnen area.

Drinks and refreshments included.

Date: Sunday 18th of November 2006

Time: 3pm until 5pm

Cost: \$20.00 members

\$25.00 non members

Bus: \$10 for the return trip



VOLUNTEERS LUNCH

Mugga Mugga has again been selected for our volunteer's luncheon, thanks again to Historic Places. The facilities there are very good, and full use of the kitchen certainly makes our job a lot easier. There is ample room under cover, so that the event will go ahead regardless of the weather.

For all those who have volunteered their time for the National Trust in the past twelve months please phone the office to be placed on the list. This luncheon is for you, in appreciation for the time you have given the Trust. This event pays tribute not only to National Trust Volunteers, but to members of the Trust who are volunteers at Lanyon, Calthorpes' House and Mugga Mugga.

Date: Tuesday 4th December

Time: 12 for 12.30

All volunteers will receive their invitations in the mail. Could you please RSVP to the office or the shop at Old Parliament House?

At this event we recognise those members who have volunteered their time for a continuous period of ten years or more. Could you please advise the office if you qualify? Also could any members who have not received a certificate or badge and have volunteered for more than ten years, please contact the office or OPH shop with particulars.

OFFICE NEWS

We welcome Patricia Sullivan to our team in the office.

Patricia has been a volunteer in the office for a number of years and put her hand up when we advertised for the position when Chris left. She will be working three days per week to do the office administration and in her spare time to keep our library data base up to date.

We would like to apologize for any inconvenience to our members during the upgrading of our office. These renovations were requested by the ACT Government to alter the entrance area for the office next door

Just a reminder our office hours are 9.30am to 4.30pm Monday to Friday

If any member has any query outside those hours they are quite welcome to contact the Shop at Old Parliament House which is open 9.00am to 5.00pm seven days.

The Council and members of staff could like to take this opportunity to wish everyone a Merry Christmas and a prosperous, healthy and safe new year.

It does not seem right to be passing on seasons greetings at this time of the year but we prepare the articles six weeks before going to press.

SHOP NEWS

The past twelve months have been a strange but interesting one, with the management of both the shop and the office being combined. It has been difficult but without the backup of the staff and volunteers it could not have been done. The Shop and the ACT Trust in general benefited from the merger with a better than normal profit at the end of the financial year.

Firstly, I would like to thank all our volunteers for their help and friendship, during the past year, and my sincere thanks to Barbara, Margaret, Dianne and Lorraine for their support, friendship and looking after the shop in my absence. The extra special effort they manage to provide is very much appreciated.

The National Trust Christmas cards and diaries are in stock and available from the shop, office and also the Combined Charities Card Shop. The diaries are of Australian Gardens and just to raise a little interest there are a few samples of the pages on the inside back cover.

Finding it hard to find that special Christmas present? Why not give the gift that supports the preservation of our heritage - membership of the National Trust. Or a gift voucher from the shop.

The shop is open from 9am to 5pm, 7 days a week. The only day we do not operate is Christmas day.

We would like to wish everyone a Merry Christmas and a Happy and safe New Year.

HERITAGE TODAY



GALLIPOLI

In the last issue (Heritage in Trust, Winter 2007) I reported on our concerns for the preservation of unrecovered human remains at Anzac, Gallipoli (see also the article 'Gallipoli – Roads, Bones and Responsibility' in Trust News Australia vol 1. 2007). In July the Trust wrote to the Minister for Veterans' Affairs, Mr Bruce Billson, expressing our concerns for the human remains exposed in areas of high tourist activity.

We have had a reply to our letter which the President and I have looked at carefully. A second letter was sent to the minister in which we asked for further clarification of points he raised. In August the President and I met with the Shadow Minister for Veterans' Affairs, Mr Allan Griffin to inform him of our concerns. The following month (September) during the Parliament sitting period we, along with Mr Colin Griffiths of the ACNT, had a meeting with the Minister and the Secretary of the Department for Veterans' Affairs. At this meeting we presented an outline of the problem as we saw it along with a survey method which would go some way in protecting bone which becomes exposed in high tourist activity areas. The Department is now considering our proposal and we will continue to press for a satisfactory resolution.

On 31 July I briefed the Ambassador Designate to Turkey, Mr Peter Doyle, on the Trust's concerns. He had specifically asked to hear the Trust's views as he wished to develop a balanced understanding of the issue and the concerns surrounding the conservation of the Anzac area.

Travelscene
Canberra City

Travelling Somewhere?

Even if you are not Travelling with the Trust you can still arrange all your travel details with Travelscene Canberra City.

Just contact Gay Boersma on 6247 6544.

Travelscene Canberra City is a corporate member of the ACT National Trust

CRAWFORD BUILDING, ANU

The ANU has referred plans to the Commonwealth Government for public comment to construct a new building on campus grounds adjacent to Old Canberra House. The new building, to be known as the Crawford School, will be a three story structure and will link the western side of Old Canberra House to the WEH Stanner Building. The building will cut through a group of Cypress pines, most likely planted by Charles Weston, and will require the removal and relocation of the Chauffeur's Cottage and Gardener's Shed. There will also be internal modifications to the existing fabric of Old Canberra House.

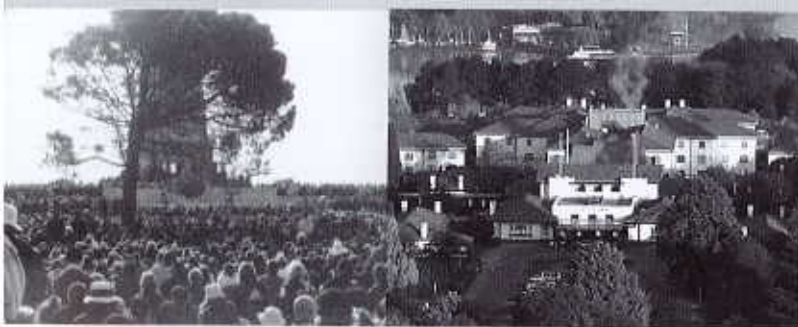
The Trust has strong concerns over the siting of this building and its impact on Old Canberra House and the landscape within the Acton Heritage Precinct. The Trust has submitted a strongly worded comment on this proposal outlining major issues relating to insufficient public consultation, the impact on potential archaeological deposits in the area, the removal of historic exotic trees, the removal of indigenous trees, the removal and relocation of buildings within the Heritage Precinct and the changes to Old Canberra House. The Trust believes that if this project was to be approved the heritage values as specified on the Commonwealth Heritage List for the place would be severely compromised and be a breach of the Environment Protection and Biodiversity Conservation (EPBC) Act. The Trust considers the submission made on behalf of the ANU to be misleading and inaccurate in its assessments of heritage impact. The whole proposal needs to be withdrawn for further rigorous review under the EPBC Act.

ANU HERITAGE WEBSITE

The ANU has recently launched a new website dealing with the heritage places and precincts within its campus.

For details see:

<http://heritage.anu.edu.au>



ALBERT HALL

The Trust is still keeping an eye on the progress of the proposed development in the Albert Hall area. Following the withdrawal of Development Application (DA53) as a result of public concerns, the National Capital Authority has engaged a Sydney consulting firm to conduct a full heritage assessment of the Albert Hall Precinct. The President and I, attended a meeting at the NCA to discuss the project. The brief and methodology for the heritage assessment appears to be satisfactory and we have offered our assistance.

As a result of public concerns with the former project plans for Albert Hall and the surrounding area a 'Friends of Albert Hall' organisation has been formed to overlook the process of the heritage assessment and any future Development Application for the area. The Friends of the Albert Hall is a national network for groups and individuals interested in the future of Canberra's historic Albert Hall. Details can be found on their website: www.ouralberthall.com

ACT HERITAGE GRANTS PROGRAM 2007-2008

The Trust has been successful in this current round of grant funding for the following projects:

- Edlington Oral history Transcripts
- Register of the National Estate – ACT places on designated land
- Oral history of Eddy Green – Tidbinbilla pioneer family
- Rock Valley, Tidbinbilla – Garden Landscape Plan
- Living photographic library – ACT National Trust photographic collection.

THARWA BRIDGE

The Trust along with Engineers Australia (ACT) is still concerned with the future of the heritage listed Tharwa Bridge. The bridge was opened in March 1895 as the first all-weather crossing of the Murrumbidgee river in the district. It is the oldest remaining Allan Truss construction bridge from a total of 24 built between 1894 and 1897 in NSW. The bridge has been closed for traffic for several months now and its future use and maintenance plan has not been made clear by the ACT government.

Dr Peter Dowling
Heritage Officer
October 2007



COMBINED CHARITIES CHRISTMAS CARD SHOP

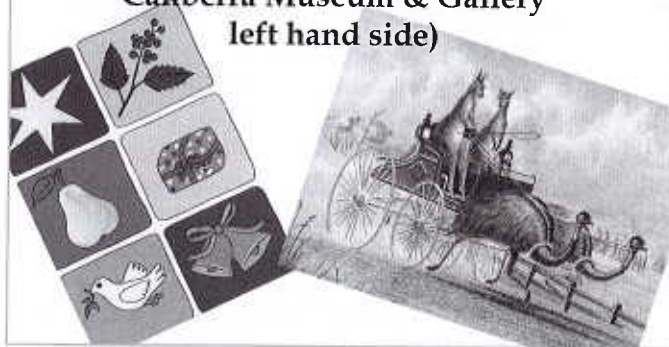
Monday – Friday
10am – 4pm

Closed Public Holidays

Closes: Friday 14th December 2007

**Located in the Civic Square
London Circuit**

**(Outside Civic Square entrance to
Canberra Museum & Gallery
left hand side)**



**JOIN
THE NATIONAL
TRUST (ACT)**

The National Trust is a non-profit, community based organization that aims to preserve Australia's heritage for future generations. Membership of the National Trust offers a number of benefits, among them are:

- Free entry to National Trust properties around the world
- 15% discount at the Old Parliament House Shop
- An opportunity to participate in travel organized by the Trust
- Access to the National Trust's special events and activities
- An opportunity to help the Trust protect your local natural and cultural heritage

TRAVELS WITH THE TRUST



GO TO GALLIPOLI II

An Archaeological & Historical tour to Turkey & Gallipoli

Departing 6/7 March 2008 (23 days).

Once again the ACT National Trust in conjunction with Travelscene Canberra City is planning this successful tour to Western Turkey. This experienced team has recently conducted archaeology and historical tours to Egypt & the Nile civilisations and the ancient sites of mainland and island Greece.

Join National Trust archaeologist, Dr Peter Dowling, together with an expert Turkish guide, on a tour of the world-famous historic places of Western Turkey. On this tour we will travel through 8,000 years of human history from the Palaeolithic and Bronze Ages through to the Greek, Roman, Byzantium and modern periods. The tour will also take in the Greek city ruins of Ephesus & Pergamon and World Heritage sites of Ancient Troy, the Hittite capital of Hattusha, the landscapes of Göreme National Park – Cappadocia & Hierapolis – Pamukkale and in Istanbul the Hippodrome of Constantine, the 6th century Hagia Sophia (St Sophia) and the magnificent Süleymaniye Mosque (Blue Mosque).

The highlight of the tour is a comprehensive five day tour of the Gallipoli battlefields visiting the major battle sites of Anzac Cove and Lone Pine but also taking in places, such as Anzac North, Suvla Bay and the southern Helles battlefields where few Australians visit. The two experienced guides will discuss both the Allied and Turkish sides of the battles right where they happened.

Cost: \$9,350 pp (Single supplement \$800)

Includes air travel, hotels, breakfast & dinner each day, ground travel & entrance to all sites

For further details of any of these tours

Phone 02 6230 0533
(Fax 02 6230 0544)

Visit: www.act.nationaltrust.org.au
Email: info@act.nationaltrust.org.au

Secure your place with an 'Expression of Interest' fee payable to National Trust (ACT)

\$50 pp local tours
\$100 pp overseas tours

If you are interested ring the Trust on (02) 6230 0533 and place your expression of interest - \$100 (\$75 refundable if you decide later not to come)

For a full itinerary of the tour go to our website at www.act.nationaltrust.org.au



Travelscene
Canberra City

**Licensed Travel Agent, owned and operated by
Jetaway Travel Pty Ltd**

**A member of the Travelscene American Express Travel Group
Corporate Member of the National Trust of Australia**

We offer a one-stop travel shop with a full range of travel services including:

- ♦ international and domestic flights ♦ great hotel rates ♦ holiday packages ♦ group tours ♦ coach tours ♦ cruises ♦ car rentals
- ♦ rail travel ♦ sight seeing ♦ event tickets ♦ travel insurance ♦ travellers cheques ♦ visa information etc

Lower Ground Floor, Ethos House
28-36 Ainslie Avenue, Canberra City

Open 9am – 5pm Monday to Friday
Saturday morning and after hours consultations by appointment only

Tel 6247 6544
Fax 6247 7638

website: www.jetaway.com.au
Email: jeataway@jetaway.com.au

WINNER – Metropolitan Travel Agency of the Year 2002



HALL HERITAGE WALK

December 2007

Hall village is named after Henry Hall who was the first resident landholder of the Ginninderra district. Hall township was proclaimed in 1882 and the first land sale occurred in 1886. Several of the original buildings established soon after that date are included in the heritage walk. Features of the walk include the General Store; the village well (Hall was without a town water supply until 1967); churches; Hall Primary School (recently closed); and several original residences.

In 1980 a by-pass was built around Hall to divert the Barton Highway, which had run through the centre of the village. This has helped in preserving the rural village character. Hall is surrounded by open country and is visually isolated from any other developments.

Afternoon tea will be provided at the end of this walk.

Sunday 2nd December 2007

Time: 2.00 - 3.30

Cost: \$12.50 including afternoon tea to be paid at time of booking

Please phone the office on 6230 0533 for bookings

2007 SERIES SYDNEY SYMPHONY ORCHESTRA MATINEE CONCERTS

Following the success of the first two concerts from the 2007 subscription series, you can still reserve a place for the remaining SSO concert on 6 December.

The package comprises return travel to the Sydney Opera House by coach, a morning tea stop on the way down, and dinner at Mittagong on the return trip, as well as your concert ticket. Lunch in Sydney is not included but the tour allows approximately 2 hours between arriving in Sydney and the start of the concert, with plenty of opportunities to enjoy a lunch of your own choice at The Rocks or The Quay, or nearer the Opera House at northern Macquarie St.

Concert Details

Thursday 6 December 2007

Wagner Siegfried Idyll

Berg Violin Concerto (To the Memory of an Angel)

Schubert Symphony no 9 The Great C Major

Costs

'A' Reserve \$145pp for members/\$148pp non-members

'B' Reserve \$135pp for members/\$138pp non-members

Contact the Trust Office on 6230 0533 to reserve your place.

VISITING THE VIKINGS TOUR

Departing 6th August 2008 for 31 days

Following previous archaeological and history tours to Turkey, Egypt and this year to Greece, led by archaeologist Dr Peter Dowling, the National Trust is organising another tour based on a similar theme. The itinerary will focus on Viking history and culture in Scandinavia and Great Britain. The tour will be in two parts.

Part one will take in Denmark, Norway and Sweden and will include a cruise in one of Norway's World Heritage fiords, a visit to see Denmark's famous bog body, Tollund Man; a three night stay on the Swedish World Heritage listed

island of Gotland and tours of museums to see the famous Viking boats and artefacts.

Part two will take in Helsinki; three nights in the marvelous city of St Petersburg in Russia and then to York, England, to visit this city founded by the Vikings and experience the Jorvik Viking Centre where you can get face to face with the Vikings. Tour participants will have the option of doing just part one of the tour or continuing on to do part two. Note: this option does not extend to doing only part two of the tour.

Full Tour (Parts 1 & 2)

\$19,250 (single supp \$3,250)

Part One

\$14,750 (single supp \$2,300)

Includes air travel, hotels, breakfast & dinner each day, ground travel & entrance to all sites.

There are still a few places available on this tour.

For a full itinerary go to our website at www.act.nationaltrust.org.au.

If you are interested ring the Trust on (02) 6230 0533 and place your expression of interest - \$100 (\$75 refundable if you decide later not to come).

TRAVELS WITH THE TRUST REGISTRATION FORM

National Trust of Australia (ACT) ♦ PO Box 1144, Civic Square ACT 2608 ♦ Phone (02) 6230 0533

| TOUR | NAME | EOI\$ | Bal\$ | Trust Member? | Coach Point? |
|------|------|-------|-------|---------------|--------------|
| | | | | | |
| | | | | | |
| | | | | | |

Please advise group leader of individual needs: Diet Mobility Other condition

Please circle form of payment: Cash Cheque M/card Visa Amex Diners

CREDIT CARD PAYMENT INFORMATION

Name on card: _____

Card number: _____ Expires: / _____ Signature _____

Office use only

MYOB CR# _____

Processing date _____ Payment processed by _____

MYOB CR# _____

Processing date _____ Payment processed by _____

SPECIAL REQUIREMENTS

Contact your tour leader to discuss individual requirements.

TRAVELLERS NOTE

Whilst the National Trust (ACT) maintains Public Liability Insurance Cover, it is necessary to remind applicants that most activities involve some element of risk. Bush walking, in particular, is an inherently dangerous activity and requires a reasonable level of fitness. Whilst the National Trust (ACT) will endeavour to protect your safety, it cannot remove all dangers. Anyone undertaking activities should be aware that they are participating at their own risk. The National Trust (ACT) must also assume that each applicant has levels of acuity, mobility and fitness appropriate to the particular activity.

PROCESSING YOUR BOOKING

Although requests for further details will be posted out as soon as possible, please note that activity leaflets, receipts, etc, may only be posted out a few weeks before each activity. Places are reserved in order of receipt, provided subsequent payments are received by the date(s) advised.

DISCOUNTS/CONCESSIONS

Although not always possible (particularly with overseas tours) the Trust aims to offer reduced rates as follows: discounts for members to reward Trust membership; concession rates for Seniors Card (Gvt), pensioners and full-time students; junior rates for children (under 12 years). All quoted prices include applicable GST.

TOUR WITHDRAWAL CONDITIONS

Withdrawal after the close of bookings may incur a \$25 fee.

EXTERNAL OPERATORS

In order to ensure that applicants for the more expensive tours receive protection under the Travel Compensation Fund against default by external suppliers and agents, and acting on the advice of the ACT Registrar of Agents, payments for such tours, other than the Trust's EOI, will need to be paid to the relevant travel agent. As of 1 July, this applies to all Trust tours which extend beyond one day. Full details will be advised to each applicant. As of 1 July, Travelscene Canberra City (operated by Jetaway World Pty Ltd - licence no. 18800203) is appointed as the Trust's travel agent for such tours, for the next two years.

(continued from p 1)



several submissions by community groups, including a request by St. John's Church to lease or buy the building, the premises were given over to the YMCA in 1947 for use, on the proviso that, although the YMCA had management and control of the Drill Hall, access was to be available to all members of the community, including the Australian Defence Force (ADF).

During its association with the ADF the following groups made use of the Drill Hall:

- 3rd Battalion RNSWR (1940 – 14/03/42);
- 12th Australian Supply Company (14/03/42 – 31/03/47);
- 8th Signal Regiment;
- 4/3rd Battalion RNSWR;
- 3rd Battalion Werriwa Regiment;
- Sydney University Regiment, ANU Company;
- 462nd Squadron, RAAF;
- 7th Australian Light Horse;
- Air Training Corp; and
- RSSAILA.

In 1967 the *Australian National University (Leases) Ordinance 1967* was passed (29th June 1967) and the Second Perpetual Lease for the ANU was approved. The Second Perpetual Lease took in the land on Kingsley Street, including the Drill Hall, but since the Drill Hall was still in the control of the Army at this time it was not officially included in this lease. It was not until the granting of the Third Perpetual Lease on the 6th

November 1974 that Block 2, Section 63 Acton (the Drill Hall), comprising an area of 6 acres 2 roods and 10 poles was included in the University's leasehold.

After the official handover of the Drill Hall to the ANU in July 1969, its name was changed to the Kingsley Street Hall to reflect its new association with the University. The Hall and caretaker's cottage were named for English novelist Henry Kingsley (1830-1876). By September of 1969 the newly named Kingsley Street Hall was being used by the exams section, Sports Union and ANU Health Services.

The eastern ancillary area of the Drill Hall initially housed Radio ANU from April 1973, a radio station established by students to broadcast to university halls, colleges, the University Union and University House. In 1975, the Council of Social Services, Council of Cultural Societies, the Sports Council, ethnic communities and university students in the ACT started a new community organisation called 2XX and in 1976 the Radio ANU became Radio 2XX. Radio 2XX was Australia's first broad-based community radio service. Over the years 2XX has fostered a vibrant music culture in the ACT through concerts and live recordings as well as providing a voice for grass-roots activists, ethnic and community groups and progressive movements. The long association of Radio 2XX with the Drill Hall came to an end on the 17th December 1999 when Radio 2XX moved to premises in Bunda Street.

A joint initiative between the ANU and the NGA to use the Kingsley Street Hall as an exhibition space came to fruition on the 29th March 1985 when the newly renamed ANU Drill Hall Art Gallery opened as an annex of the NGA. The Drill Hall Gallery supports the arts in the Canberra region by providing link exhibitions developed in conjunction with the University's wide ranging academic interests or to coincide with major conferences and public events. National and international exhibitions, and works from the University's own extensive collections are features of the Gallery's program.

The Canberra Drill Hall displays a high level of integrity retaining an ability to demonstrate its original drill military administrative functions both through the planning of its internal spaces and through its surviving original fittings and finishes. The Canberra Drill hall is also historically significant due to it being the only Drill Hall built in the ACT.

The Drill Hall Gallery is a significant example of the Inter-war Functionalist style of architecture being practiced by Henderson and his immediate successors in the late 1930s and early 1940s. The use of Art Deco elements reflects the trend in monumental architecture in Canberra of this period. The Drill Hall is important as a suite of buildings constructed in Canberra at this time that exhibit similar architectural elements and are important in defining the aesthetic of Canberra as a town.

The Drill Hall Gallery is socially significant due to its long history and association with the Canberra Community. From its military and paramilitary uses during World War II, through to its association with the YMCA and other community groups. The Drill Hall Gallery is an important part of the social history of Canberra. This is further enhanced through its association with the student body of the ANU, Radio 2XX and its current use as a gallery space.

Conclusion

The ANU has developed an ongoing plan for the long-term protection and maintenance of the Drill Hall Gallery. Developed in conjunction with advice from the National Trust, this plan uses current world's best practice in heritage management to formulate policies and procedures to protect and enhance this valuable resource. As a working gallery, an example of Australia's military history or a piece of intact 1930s architecture the Drill Hall Gallery has something for everyone. The ANU also has detailed information about the buildings history and heritage value on its heritage register at: <http://heritage.anu.edu.au/>

The Drill Hall gallery represents an important part of Canberra's and the nation's history. Its form and function are still discernable even today and its ongoing use as a gallery space shows how sensitive and careful adaptive re-use can give new life to old buildings.

Gary Estcourt

A THANKS TO CONTENTGROUP

Members may have noticed that the ACT National Trust has frequently been mentioned in the local and national print and electronic media. Our views and concerns on places of heritage significance, which have for reasons good and bad made it to the attention of the public, are now often sought by media representatives. For example, in the last few months we have been asked to comment on such issues as the development in the Albert Hall precinct, the current plans for development in the grounds of Old Canberra House, conservation issues of unrecovered human bone on the Anzac battlefield, Gallipoli, Tharwa Bridge and the places we see at future risk due to legislative changes.

The reason for this exposure is that we are now able to reach quickly and effectively the major media outlets throughout the States and Territories of Australia. This extremely valuable facility has been made available to us without cost by David Pembroke and his staff at Contentgroup.

Many Canberrans will know David. He began his media career in community radio, working his way through regional radio to join ABC Radio current affairs in Sydney as a junior reporter in 1989. David also had the opportunity during his time in Sydney to co-host the weekend sports program, Grandstand. In 1993, David joined the ABC Current Affairs radio team in Canberra as a member of the Federal Parliamentary Press Gallery. He spent three and a half years reporting on national affairs before leaving the ABC in 1997 to start Contentgroup. David identified an opportunity to blend his business, marketing and communication skills to offer a service to the public and private sectors.

As part of his commitment to the ACT community David's company is now a corporate member of the ACT National Trust and in turn is helping us with our commitment to be an independent and expert community leader in the conservation of our cultural and natural heritage.

PATINATIONS

Conservation & Restoration of
Fine Antique Furniture

Professional conservation and
restoration services for antique furniture,
interiors and related materials.
Insurance, museum and private work with
particular emphasis on minimal
intervention.

10% discount for National
Trust members

Member of the Australian Institute of
Conservators of Cultural Material,
Authorised Conservator to the National
Trust of Australia ACT & Approved
service provider of the Antique
Dealers Association of Australia.

www.patinations.com.au

Phone: 02 6260 1112
Unit 4/157 Gladstone Street Fyshwick



AICCM



STONEHENGE

Stonehenge, one of the great prehistoric monuments of the world is located in the English county of Wiltshire, about 8 miles (13 km) north of Salisbury. Erected around 4,200 years ago, the structure is composed of extensive earthworks surrounding a circular setting of large standing stones. The Stonehenge Precinct is owned and administered by English Heritage but National Trust members are admitted free.



Photo – Tony Davison 2007

Tony and Maria Davison, new members, recently visited Stonehenge and reported that, 'we made good use of our National Trust membership while in the UK, and were pleased to find that Avebury is now managed by the Trust in the UK and that there are reciprocal arrangements to visit Stonehenge. Also, Housesteads Roman Fort (part of Hadrian's Wall) is now also a Trust property. As an aside, I would recommend that all members check the internet site of local Trust organisations for updates on opening times before visiting, as it is so easy for printed guides to become out of date.

So next time you are in the vicinity of Stonehenge drop in if you are a member, or if you are not yet a member isn't this a good reason to join?

U3A

The National Trust would like to thank U3A (University of the Third Age) for their support in promoting our special tours and events in their magazine.

For those who are not aware of U3A below are a few points and contact details:

- U3A is open to adults aged 50 and above.
- Membership is \$25 per year or \$40 for two people living at the same address.
- Members are eligible to participate in as many courses as they choose, typically a small donation of \$1-\$2 is charged per session to cover room rental costs.
- Courses are held in community halls across Canberra, and in particular in Hughes Community Centre where U3A also has a computer lab and its offices.
- New members are always welcome, as are new presenters.

Phone: 6281 6998.

Web address: www.u3acanberra.org.au.



DO YOU HAVE A FRIEND TRAVELING OVERSEAS?

**Tell them about the
advantages of joining the National
Trust including free entry into over 2000
National Trust Properties around the
world.**

COLONEL KATHLEEN BEST MEMORIAL GATES



The Colonel Kathleen Best Memorial Gates are currently located at the Royal Military College, Duntroon in Canberra. Their original position in Duntroon was adjacent to the main parade ground on a corner of a grassy landscaped triangular piece of land. However, since 2005 they have been moved again and are now the front entrance to the Commandant's residence, now called Cavanagh House.

Originally, the gates were situated at the entrance to the Women's Royal Australian Army Corps¹ Training School at George's Heights in Mosman, Sydney. They were erected at this former site in 1959 and remained there until their removal sometime in the late 1980s early 1990s. Their purpose, however, ceased in 1984 with the closure of the WRAAC Training School as the Corps itself had been disbanded and the female members were integrated into other Units within the Australian Army.

In the case of military memorials, Colonel Kathleen Best is hardly a well-known figure in Australian history, so why are these gates in her name? Why is it a memorial? What indeed is the WRAAC? Many people in the Australian Army and the general public today do not know that a Corps made up entirely of women even existed. Colonel Best was the first Director of the WRAAC, and "she was the woman who got the Corps started and working in a manner on which others could efficiently build for years to come."² Sadly, Colonel Best only served six years as the Director before succumbing to a terminal illness. She was highly respected by her peers and WRAAC members, and this combined with her war and post-war service led to the building of the gates. They were to serve the dual purpose of commemorating Colonel Best and providing a gateway to the new WRAAC Training School.

Why is this important today? When the Colonel Best Memorial Gates were moved to Duntroon their first place of rest was within the Duntroon Heritage Precinct. However, as this Precinct was Heritage Listed in 1983 the Gates were not included as they arrived later. In their

new position they are not within the Duntroon Heritage Precinct. Some would argue they are not worthy of heritage protection but I beg to differ. With the new Commonwealth Heritage List (CHL) coming into play it is important that these Memorial Gates are listed as they have significant heritage value for the Australian Army and Australia as a whole. The Best Gates and what they signify represent a period of women's involvement within the military, and they also have potential to yield information that will contribute to an understanding of Australia's cultural history. The Best Gates have heritage value because they represent a special association with a particular community for social, cultural and spiritual reasons.

What is this special association? Cultural significance frequently 'stems from a place's relationship with its surroundings. This relationship can demonstrate important aspects of its history and this evidence is lost if the relationship is broken.'³ In this instance the history of the gates is intrinsically linked with the history of Colonel Best and the WRAAC. In determining the Best Gates significance several questions have to be answered: Why was it created; was it extraordinary; why was it put in that original location; how was it used, and how has it changed.⁴

The Best Memorial Gates were created as a memorial gateway in recognition and gratitude of the service to the WRAAC by Colonel Kathleen Best. They were designed by Sergeant Juanita Feltham and depict the life and work of Colonel Best. They are even more poignant as Colonel Best only served six years as the first Director of the WRAAC and her early death was deeply mourned. The design forms part of the post World War II monument design as being both, practical, aesthetically pleasing, and commemorative.

The Memorial Gates are an exceptional monument to a serving female member of the Australian Army. There are no other memorials of this type anywhere in Australia. The esteem in which she was held is depicted in the attention to detail of the design of the gates which magnifies her own WRAAC designed badge and her connection with nursing. It is also extraordinary that the cost of erecting these gates was effected through donations from serving and ex-servicewomen at the time. Other memorials exist to Colonel Best but these Gates are more extraordinary because they not only survived the entire duration of the WRAAC presence in Mosman, they were also preserved, and are a relatively intact monument.

The Memorial Gates symbolised and were physically the entrance to the WRAAC Training School. The WRAAC Training School in 1958 was seen as a long-term

1 The acronym WRAAC will be used to denote the Women's Royal Australian Army Corps throughout this paper.

2 Oliff, Lorna, *Colonel Best and Her Soldiers: The Story of the 33 years of the Women's Royal Australian Army Corps*, Oliff Publishing Company, Sydney, 1985, p 98.

3 *Burra Charter*, 1992, p 42.

4 *Burra Charter*, 1992, p 12.

commitment. It was *the* School for training female officers within the Corps. The Training School provided for Officer, Warrant Officer and Non-Commissioned Officer training. At that particular time it was not envisaged that the location at George's Heights would become inadequate or that the Corps would one day cease to exist. As this was one of the most important sites for the WRAAC it was fitting that such a memorial should be placed there.

How was it used? The Memorial Gates in their Mosman location were used every day. They formed the entrance to the WRAAC Training School. They were a constant reminder of Colonel Best and her contributions to the Service. When the WRAAC was finally disbanded in 1984 the Gates were symbolically closed on 5 December of the same year by former Sergeant Juanita Feltham, designer of the gates, and Colonel Best's sister, Mrs Gwen Ellis.

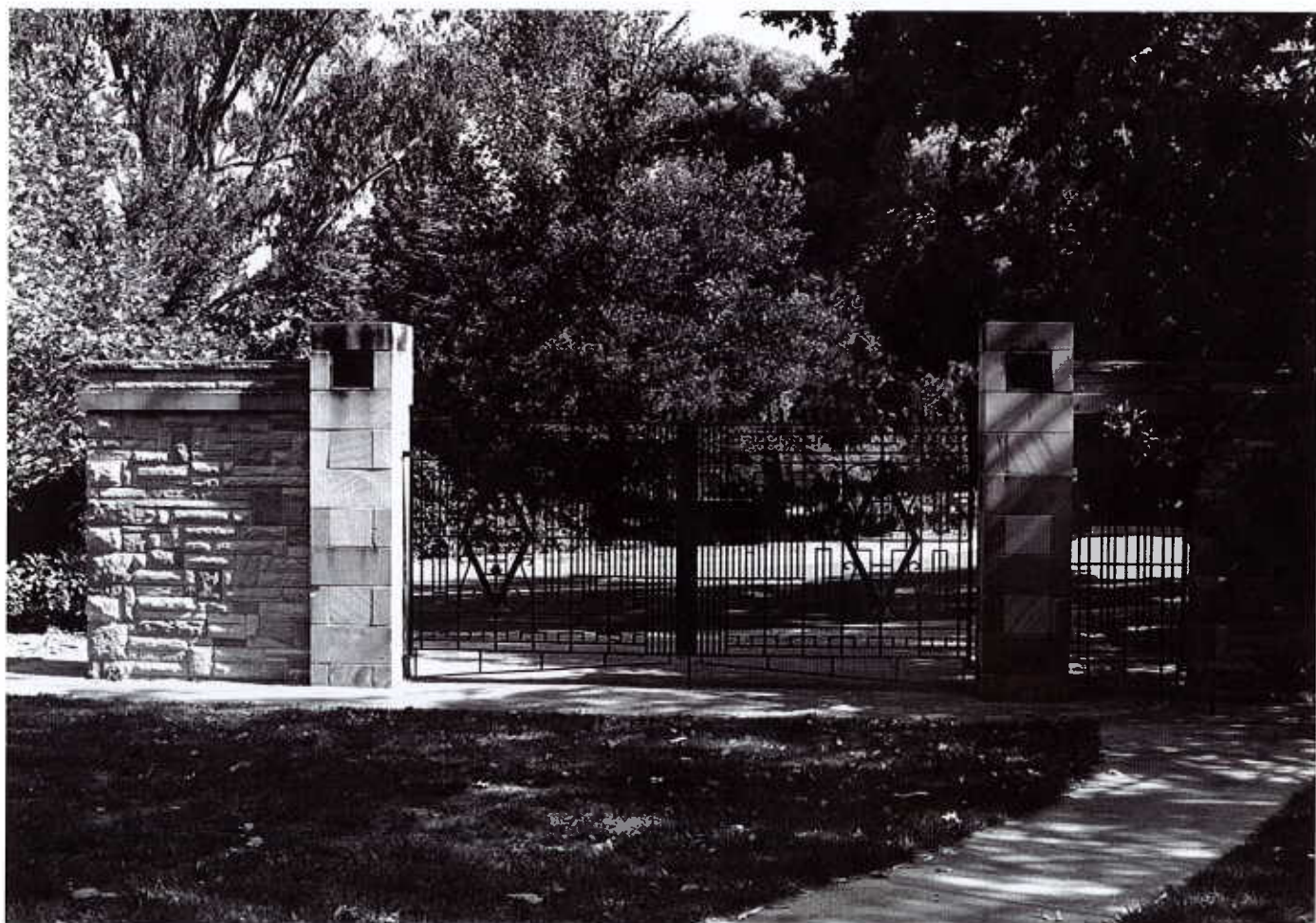
How has the area changed? When the WRAAC Training School ceased operation the Memorial Gates remained in Mosman at the entrance to the George's Heights military area. They were still there in 1987 as they were on the Royal Australian Historical Society, Monuments and Memorials register. The George's Heights military area

is now used by the Sydney Harbour Foreshores Trust as its Head Office. Without the Memorial Gates the only remaining physical reminder of the WRAAC Training School and its former importance are the road names. Three quarters of the roads are named after key members of the WRAAC. Sometime after 1988 the Best Gates were removed from George's Heights and placed in the grounds of the Royal Military College (RMC), Duntroon where they are to this day. As the Army is now an integrated service RMC, Duntroon has taken over the role of educating military officers both male and female.

The Gates in their original location (Mosman) consisted of wrought iron and hung from piers of natural sandstone. They comprised of a pattern of the Red Cross, the overall background symbolic of Matron Best's early association with the medical profession. The Main Gates feature the lozenge, the left to indicate Colonel Best's association with the medical service during WWII, and the right to symbolise her service with the WRAAC. The centre of the main gates forms a cruciform, synonymous with the Red Cross, to symbolise her Christianity and humanity. Forty-seven spikes above the Gates denote the years of her life and are in the form of gum leaves.⁵ These gum leaves are also part of the WRAAC Badge

⁵ Oliff, 1985, p 100.

(Continued over...)








Kathleen Best Memorial Gates exit on to Robert Campbell Road

that Colonel Best designed. In the photographs of 1986/87 the gates are painted bottle green with the lozenges and the crosses within them, the cruciform and the gum leaves painted gold. The stars of the Southern Cross are painted silver.

To the left of the main gate is a foot gate also made of wrought iron and painted bottle green. It bears the Corps badge in bronze. The badge was designed by Colonel Best as part of her duty as the Directory of the Corps and was to characterise an Australian Women's Service. It consisted of a silver lozenge which in heraldry is the symbol of a shield for women, and superimposed, as representative of the Southern Hemisphere, were the stars of the Southern Cross. Gilt gum leaves designate an Australian Corps. To indicate allegiance to the Sovereign, the badge was surmounted by a Tudor Crown, which was amended to a St Edward's Crown when HM Queen Elizabeth II became the Sovereign in 1954. All this was mounted above a gilt scroll containing the letters WRAAC which identify the Corps.

To the right of the Gates is a commemorative ceramic panel inlaid into the sandstone wall depicting Command formation signs. These tiles have also been placed to form a cross and are distinctly placed with textured sandstone blocks around them. These ceramic tiles were handmade by Mrs Klytie Pate from Melbourne. An explanation of the panels is as follows:

| | | |
|---|-------------------|--|
|  | Eastern Command | Waratah |
|  | Southern Command | Blue, Southern Cross surmounted by Crown |
|  | Northern Command | Blue Maltese Cross |
|  | Western Command | Black Swan |
|  | Central Command | Black and white eagle on gold |
|  | Tasmanian Command | Red lion on gold shield |

The wrought iron of the Colonel Best Memorial Gates when moved to Duntroon was painted black. In their present location as the entrance to Cavanagh House they were steam cleaned. However, they are still painted black. The State plaques were replaced when required and the broken ones have been retained at the museum. In 2007 a new plaque was erected at the Gates informing visitors of the history of the Colonel Kathleen Best Memorial Gates and Cavanagh House. The information on its present location and condition has been supplied to me by the Commandant's Office, Duntroon. If successful in its listing full restoration to its former, state would be sought.

The Colonel Best Memorial Gates have become important in their own right. They point to the existence of a Women's Royal Australian Army Corps within Australian military history. It identifies that there was military life for women after World War II. The fact that they are now in RMC, Duntroon shows the progress of

women through the Australian Army as all officers are now trained there regardless of gender.

The Colonel Best Gates as they were originally positioned at the corner of Harrison and Robert Campbell Roads in Duntroon had a more commemorative aspect. They now exist more as a memorial than ever before. At the time of my thesis research into these gates in 2000, the WRAAC Association celebrated its Corps Day at the Gates.

One could say that the Colonel Kathleen Best Memorial Gates have come full circle. They are once more in use serving as the entrance to the Commandant's House. However, it is important to remember that they are still culturally significant and immortalize the life and work of an outstanding member of Australia's military history. Through Colonel Best's work and those she helped galvanise into action the foundation for the integrated services in the Defence Force of today was laid. The Memorial Gates now located in Duntroon in a more prominent and functional position is a reminder that women are no longer excluded from worthwhile military service and are treated equally. Hopefully, since my thesis, the efforts and achievements of Colonel Best and indeed the history of the WRAAC is now studied and remembered just like those accomplishments of other more prominent military personalities such as Monash, Blamey and Wear Dunlop.

I will be nominating the Colonel Kathleen Memorial Gates for the Commonwealth Heritage List, and would welcome any information regarding these Gates, service within the WRAAC, indeed any connection you may think would help to list these Gates.

Alison Comrie

Alison Comrie completed a BA (Hons) and Master of Letters in Public History at the University of Sydney. Her thesis is titled 'Colonel Kathleen Best Memorial Gates: Military Memorials and Military Heritage'. Alison is in the Australian Army Reserves and spent a tour of duty in East Timor in 2002. She now resides in Christchurch, New Zealand and is about to take up the Secretary / Treasurer role in with the Canterbury Branch Committee of the New Zealand Historic Places Trust.

Do you have an interesting article or a point of view that you would like published in the magazine?

If so send it to info@act.nationaltrust.org.au