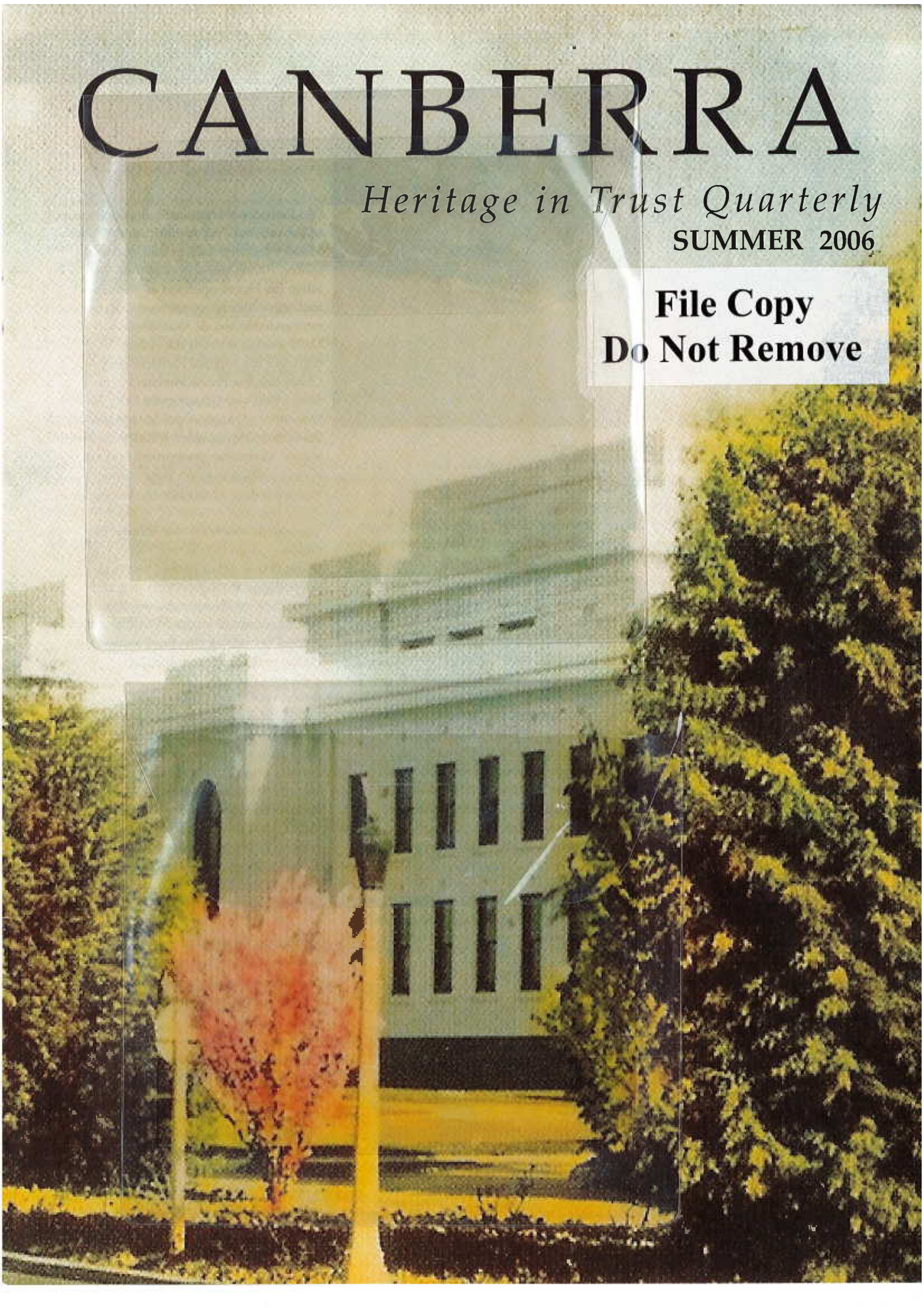


# CANBERRA

*Heritage in Trust Quarterly*

SUMMER 2006

**File Copy  
Do Not Remove**





## STILL MAKING HISTORY

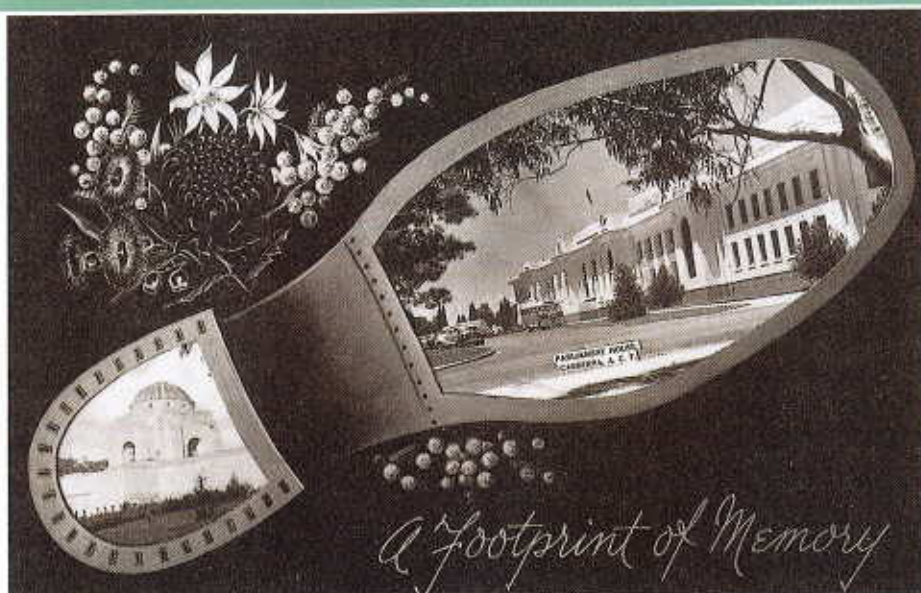
Old Parliament House still displays much of her original 1927 furniture and fittings. Visitors can step back in time and see offices, rooms and spaces as they used to be when the House operated as Parliament and relive historic events that took place here and affected all Australians. Daily guided tours of the House highlight the original Parliamentary Chambers, the Prime Minister's Suite, King's Hall and Government Party Rooms. A number of our tour guides worked at Old Parliament House when it functioned as the seat of Australian government and are always willing to share their unique understanding of this historic building.

The important events that shaped the nation — from the Second World War to the Petrov Affair to the Dismissal — are revisited through permanent and temporary exhibitions and through special tours and events. Families are also catered for, with a clue hunt around the House and dress-ups in period costumes.

Old Parliament House will open a new exhibition on 28 February entitled *"Mrs Prime Minister—Public Image, Private Lives"*. This exhibition will explore the realities of being married to one of the nation's most powerful men. From Joe and Enid Lyon's love letters to Sonia McMahon's famous White House dress, visitors will discover the glamour, the loneliness, the passions, and the sacrifices of these 24 women.

In May the House will permanently open the Press Gallery to the public—the offices, corridors and gallery from where the major political events, scandals, leaks, and scoops were reported.

Old Parliament House is also home to the National Portrait Gallery, bringing visitors face to face with Australians who have made a major impact upon our history and culture. *Café in the House* and the *Old Parliament House Shop* are also located in Old Parliament House. The nostalgic postcard featured on the cover is part of a collection available from the shop.



## looking after the legacy

This powerful cultural icon is a symbol of the nation's struggles and triumphs, its federation and its long-standing democratic traditions. The Commonwealth heritage values of OPH are imbued in its historical and social significance, as the focus of Federal Government politics from 1927 to 1988. The building and its setting are significant in terms of its architectural values. It represents the major work of the Commonwealth's first architect, John Smith Murdoch (1862-1945), and it is a major physical feature of Canberra and its original planning. Since 1995, Old Parliament House and its curtilage have been managed as a Branch of the Department of Communications, Information Technology and the Arts (DCITA). Until 2000, two former conservation management plans informed the conservation approach at OPH. Since 2000, the heritage conservation management process has been guided by the Conservation Management Plan. The introduction of new commonwealth heritage legislation in January 2003 has informed recent plans to change the conservation approach at OPH. This paper goes through the history of heritage conservation management at OPH and some of the challenges that have been faced. It explores some of the challenges and opportunities OPH is facing when it comes to implementing sound heritage management whilst planning to meet the new statutory obligations. It also showcases recent conservation projects.

*OPH is listed on the Commonwealth Heritage List (14 July 2004), the Register of the National Estate, the ACT Government's Heritage Places Register, the National Trust of Australia's (ACT) Register and the Royal Australian Institutes of Architects' Register of Significant Twentieth Century Architecture, and is nominated for inclusion on the National Heritage List.*



BLOSSOMS OUTSIDE OLD PARLIAMENT HOUSE, C.1930S. Photograph by Richard Strangman, RC Strangman Collection - Image courtesy of Old Parliament House / National Library of Australia.



## Welcome members,

The Annual General Meeting was well attended and was followed by an informative presentation which was made by Professor Colin Groves on the Hobbits from the Isle of Flowers - the recent small human-like skeletons found in Flores.

It is pleasing to report that a modest profit was made for the 2004-2005 year. Standing down from Council was Michael Moreing who has served on Council primarily as Treasurer for 17 years. Michael's contribution has been significant and his support invaluable especially as we continually need to manage our finances carefully. Michael's support over an extended period is greatly appreciated. Margaret Park also stood down as she is likely to move from Canberra this year and we thank her for her contribution to Council.

Councillors re-elected were Peter Lundy, John McDonald, Eric Martin and it was pleasing to see Michael Hodgkin elected. Michael was executive officer for the Trust for many years and is an honorary member. There still remain two casual vacancies on Council which we will endeavor to fill and if any member is interested, please contact me. A further important decision at the AGM was the adoption of a new constitution which was the culmination of a review and amendment by Peter Lundy.

It gave me pleasure to announce Eunice Jukes as Volunteer of the Year for her major contribution as a guide at Lanyon and Mugga Mugga for many years.

The ACT Trust has undergone a change in Administration recently with both Colin Griffiths and Maree Treadwell moving across to the Australian Council of National Trusts. The contributions of both Colin and Maree to the ACT are greatly appreciated and it is pleasing to see that another arm of the National Trust will benefit from their ongoing contribution. This has meant a review of the Administration of the ACT Trust which also sees the retirement of Shirley Ann Ollier in February. The end result is we have a completely new administration in our office. They are: Rob Johnston - Executive Director, Chris Davies - Office Manager, Mark Simpson - Bookkeeper (part time), Peter Dowling - Heritage Officer (part time)

There are several heritage issues that Council members have brought to our attention and we are pursuing. These include:

- ☞ The impact of the heritage values of Ainslie Conservation Area and an important avenue of trees as a result of the Goodwin Homes redevelopment.
- ☞ The review of Variation 200 sometimes referred to as the Garden City variation which may have protected the heritage areas but has resulted in other impacts on inner Canberra. The Trust is keen to contribute to this review. Any thoughts of members would be greatly appreciated.
- ☞ The proposals for the redevelopment of Hotel Acton.
- ☞ The consideration of changes around the National Library of Australia.

We await further information from the NCA regarding these latter two. A review of the National Trust by Minter Ellison is being considered and one cooperative outcome of this is the new Trust News format which hopefully will be a positive contribution in many ways.

The other important document is The Productivity Commission draft report the Conservation of Australia Historic Heritage Places. It is interesting to note that this year's heritage festivities will be held in November which is a dramatic change. With all these happenings, 2006 heralds to be an interesting and active year for the ACT Trust.

**Eric J. Martin AM**

**President National Trust of Australia (ACT)**



## get grumpy, get vocal, get writing!

As you will have noticed, this edition of Heritage in Trust is significantly different from previous issues. This has come about as an initiative by the Australian Council of National Trusts, in order to streamline each of the states and territories. The opportunity was taken to give the magazine a fresh look and review the content. You will now receive the magazine quarterly, as an insert to the National Publication. As your new Editor, I am honored to be involved. Having grown up in Canberra, it is a particular joy to be part of an organization which celebrates our unique and elegant city. I invite readers to stake their claim to this "letters" page and, grumpy or glad, express your opinions about what we choose to create as a legacy for our children. My humble acknowledgements to Paul Wallace, the previous editor and designer - whose legacy is one of patience and professionalism. Thanks also to the many teams of magazine wrappers and packers, who for many years cheerfully beavered at "Trust H.Q." each issue to get your publication out to you - on time and in good order. Your helpful presence will be missed in our office. Finally to the readers - I hope you continue to enjoy the publication and it makes its way to the shelves of your library to treasure for quite some time.

## THE NEW CHARTER FOR THE NATIONAL TRUST (ACT)

The Council of the ACT National Trust has recently endorsed a new charter to guide



### CHARTER FOR THE ACT NATIONAL TRUST

#### VISION

TO BE AN INDEPENDENT AND EXPERT COMMUNITY LEADER IN THE CONSERVATION OF OUR CULTURAL AND NATURAL HERITAGE.

#### PURPOSE

TO FOSTER PUBLIC KNOWLEDGE ABOUT AND CONSERVE PLACES AND OBJECTS THAT ARE SIGNIFICANT TO OUR HERITAGE

#### ORGANIZATION

THE NATIONAL TRUST IS AN ORGANIZATION OF PEOPLE INTERESTED IN UNDERSTANDING AND CONSERVING HERITAGE PLACES AND OBJECTS OF LOCAL, NATIONAL AND INTERNATIONAL SIGNIFICANCE.

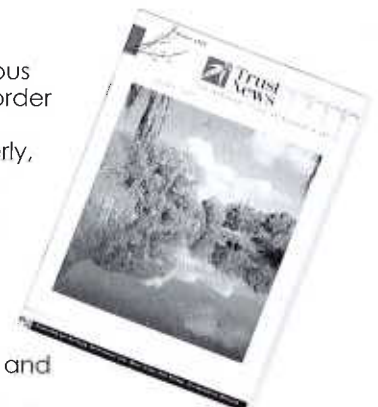
#### OBJECTIVES

A COMMUNITY THAT IS AWARE OF, APPRECIATES THE VALUE OF AND PROTECTS OUR CULTURAL AND NATURAL HERITAGE.

HERITAGE PLACES AND OBJECTS IN THE ACT REGION ARE IDENTIFIED AND CONSERVED APPROPRIATELY

WE ARE RECOGNISED AS A TRUSTWORTHY LEADER IN THE CONSERVATION OF HERITAGE PLACES AND OBJECTS.

WE BUILD OUR STRENGTH AND EFFECTIVENESS, SUPPORTED BY SOUND GOVERNANCE AND AN ACTIVE AND COMMITTED MEMBERSHIP.



Remember this? the first "Heritage in Trust"

# C O N T E N T S

## REGULAR SECTIONS

- 5 PEOPLE & PLACES**  
news and information about  
members & volunteers
- 7 HERITAGE TODAY**  
reportage from the Heritage Officer
- 8 TRAVELS WITH THE TRUST**  
day, weekend, national & international travel
- 17 SHOP NEWS**  
new things in our shop, book reviews &  
special deals for members

## SEASONAL FEATURES

- 1 OLD PARLIAMENT HOUSE**  
not to be dismissed!
- 4 EASTLAKE SWIMMING CLUB**  
cool down & drink in the architecture
- 16 LIVING TREASURES**  
our new competition for children

## ANNUAL SUBSCRIPTION RATES 2006

Joining Fee	\$33.00 <i>not applicable to concession</i>
Single	\$55.00
Single, concession	\$40.00
Household	\$80.00
Household, concession	\$60.00
Corporate	\$250.00
Corporate concession	\$72.00
Affiliated Organization	nil
Life memberships	12 times the relevant annual fee

New members and renewal payments can be made by post or in person at our city office - or at the Old Parliament House shop. Cash, cheque and all major credit cards are accepted. Membership renewal reminders are automatically generated on the anniversary of due date.

The National Trust of Australia (ACT) is a non-profit, community based organization that aims to preserve Australia's heritage for future generations.

Membership of the National Trust offers a number of benefits. Among them are:

- \* Free entry to National Trust Properties around the world
- \* Complementary copy of National Trust magazine quarterly
- \* Discounts up to 15% at National Trust Shops
- \* An opportunity to participate in travel organised by the trust
- \* Access to the National Trust's special events and activities
- \* An opportunity to help the Trust protect your local and cultural heritage

## CANBERRA HERITAGE IN TRUST

is published four times a year as a supplement to National Trust Quarterly by The National Trust of Australia (ACT)

1st Floor North Building  
Civic Square ACT 2608

PO Box 1144 Civic Square ACT 2608  
Telephone 02 62300 533  
Fax 02 62300 544  
Email [info@act.nationaltrust.org.au](mailto:info@act.nationaltrust.org.au)  
Net [www.act.nationaltrust.org.au](http://www.act.nationaltrust.org.au)  
ABN 50 797 949 955  
ACN 008 531 182

Shop Old Parliament House Shop  
Address King George Terrace Canberra 2600  
Telephone 02 6273 4744  
Email [ophshop@act.nationaltrust.org.au](mailto:ophshop@act.nationaltrust.org.au)  
Opening times 9am to 5pm seven days a week.

## PRESIDENT

Eric J. Martin AM

## EXECUTIVE DIRECTOR

Rob Johnston  
[robjohnston@act.nationaltrust.org.au](mailto:robjohnston@act.nationaltrust.org.au)

## HERITAGE OFFICER

Peter Dowling  
[consultants@act.nationaltrust.org.au](mailto:consultants@act.nationaltrust.org.au)

## EDITORIAL GROUP

Chris Davies, Dr Peter Dowling,  
Maree Treadwell, Tiffany Manning

## MAGAZINE COORDINATION & PRODUCTION

Tiffany Manning  
[tiffanymanning@bigpond.com.au](mailto:tiffanymanning@bigpond.com.au)

## ADVERTISING, EDITORIAL AND SUBMISSION ENQUIRIES

Office Administrator  
[info@act.nationaltrust.org.au](mailto:info@act.nationaltrust.org.au)

## CORPORATE MEMBERS

ACT Heritage Library, Bensley's Bus & Coach,  
Eric Martin & Associates, Patinations,  
Travelscene Canberra City, ANZAC PARK Homestay.

## BENEFACTOR MEMBERS

Justice Rae Else-Mitchell

## PHOTOGRAPHIC MATERIAL AND IMAGES

unless otherwise specified, images are printed with the kind permission of members and staff and are not be reproduced without authority.

This magazine is published with financial assistance of the Department of Environment and Heritage. Discounts on advertising rates apply to non-profit community groups and corporate members of the Trust (ACT).

ISSN 0727 - 9019 C 2006 National Trust of Australia (ACT)



## Lyall Gillespie ISO, OAM

The National Trust is saddened to hear of the recent death of Lyall Gillespie. The President, Council members and staff of the National Trust of Australia (ACT) extend their heartfelt sympathy to his family. Lyall was a great historian of the early days of the Australian Capital Territory. His many publications, papers and reports on Aboriginal archaeology and European settlement have been the foundations from which many of us, who write about our history, have begun. His loss will be felt for a long time.



Lyall Gillespie at Cooe, Hall. photograph from a private collection.



## Eastlake Swimming Club

The Manuka Swimming Pool has a delightful history that is far deeper than the spectacular architecture & genteel lawns. As the first swimming pool in Canberra, it was brought about by public demand and petitions from the, what was then, Eastlake Swimming Club. Before its completion, Canberrans swam in the Molonglo River and other local swimming holes at the Cotter and Murrumbidgee Rivers.

Building work commenced on the pool in July 1930, it was the first swimming pool to be built for the city and was officially opened on 26 January 1931. In his highly readable and entertaining book, "That's where I met my wife", Huggis\* reports the following anecdote in the prologue:

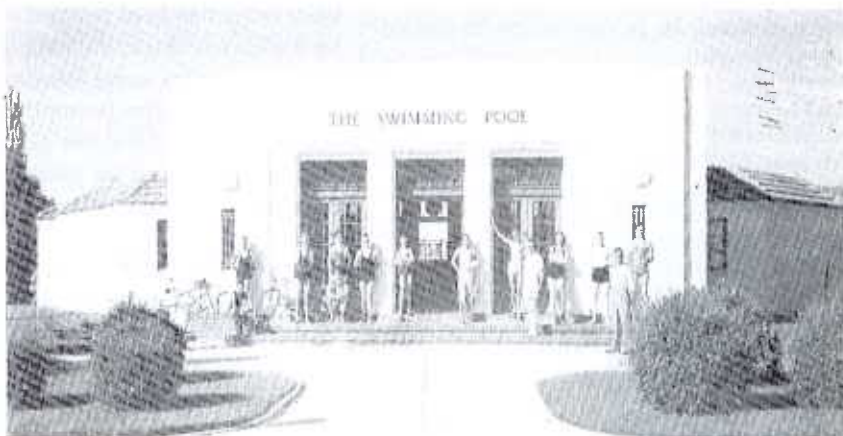
**Recently, one of the male guests of the Brindabella Nursing Home, Curtin, who had not spoken a word to anyone for a long time, was on a trip around Canberra in the Canberra Valley Lions' Bus, looking at autumn leaves and buildings. From the back of the bus, where he was sitting next to one of the nurses, he suddenly smiled, and pointed to the swimming pool. He said, "That's where I met my wife!"**

Manuka Swimming pool is classified by the National Trust and is open 6.30am to 7pm weekdays and 8am to 7pm weekends. Season will end on 26th March. Prices: Full \$4.50, Concession/ Pensioner \$3.50. There is a small kiosk offering icecreams and drinks. People are welcome to bring a picnic lunch and enjoy the day on the lawns. What a refreshing way to spend the afternoon with a good book or catching up with friends. A note for those considering splashing out: dress rules have been relaxed since the twenties -

Window & Roundel  
Manuka Pool,  
photograph C Rodney  
Garnett, Federal  
Capital Architecture.

you can wear that polkadot bikini without fear of arrest! "I met My Wife There" is available at the OPH gift shop for a RRP of \$28.00 - a thoughtful and perhaps even romantic gift.

\*Huggis, compiled on behalf of Clive Harvie (1994?).  
That's where I met my wife : a story of the first swimming pool in the National Capital at Canberra.  
C. Harvie, Canberra, Australia. (no ISBN).



Photograph demonstrating the strict swimming costume regulations for male swimmers during the 30's. Full trunks at all times. Photograph, private collection from "That's where I met my wife"



## Evening for new members

We would like to invite all our new members and existing members to a special evening at Gorman House on Wednesday the 22 of March to hear about the conservation of Old Parliament House. Ree Kent, the Heritage Manager and Megan Rogers will give a joint talk on the heritage and conservation of Old Parliament House. Join us for drinks and nibbles at 5.30 prior to the talk.

Date	Wednesday 22 of March
Time	5.30 pm
Place	Bogong Room Gorman House Ainslie Avenue Canberra City
Cost	\$5.00 New Members \$8.00 Existing Members \$10.00 Guests

...Look to the cover article on Old Parliament House for this remarkable buildings' intriguing past.

## THE MEMBERS PAGE

Is an information page for all current and future members of the National Trust of Australia (ACT). Our aim is to pass on any information that may be of assistance to members and also to notify members of activities that have been organised by the various committees of the ACT National Trust during business hours.

### TEN YEARS CERTIFICATE OF SERVICE

These certificates are given in addition to a special National Trust Volunteer badge, to active volunteers who have given ten years of continued service. We would like to congratulate the following volunteers who received their 10 year certificates this year:

*Marie Hodges - Old Parliament House Shop*  
*Warrick and Jeanette Richmond - Lanyon*  
*Ken and Jill Edmondson - Lanyon*

## novus ascripticius

TO JANUARY 2006

welcome to the following new members:

Mr & Mrs K & I Bull  
 Susan & Peter Cook  
 Richard & Audrey Croll  
 Ann Curthoys & John Docker  
 Chris & Michael Davies  
 Rosalyn & Brovis Dudek  
 Keith Forsey  
 Tony & Peg Garnock  
 Joan F. Gorman  
 N Drayson & B Hince  
 Rob & Jean Johnston  
 Michael Kennedy  
 M & J Krause  
 Kevin Lea  
 Mrs Margaret Lee  
 Stephen Lloyd Morgan  
 Mr John Mulvaney  
 Bruce & Coleen O'Meagher  
 Ms Joanne Pearce & family  
 Hilton & Jan Prideaux  
 Pieter & Wendy Quinton  
 Geoff & Louise Slockwitch  
 Lady Nanette Smith  
 Michael & Elizabeth Taverner  
 Matthew & Brenda Walker  
 Trei & Andree Walters  
 Beryl & John White

## Christmas Cocktails

The 2005 Christmas Cocktail Party was held at Calthorpes' House on Saturday 26th November. Understandably, the members of the organizing committee for the Cocktail Party were not adequately prepared for the torrential rain which greeted them when they arrived at Calthorpes' House to set up for the event. Consequently Dianne Dowling and the House Staff were drenched as they ran through the rain to fetch tables and other equipment from the storage areas. Instead of the tables and chairs being placed informally around the garden, they had to be arranged in snug little groups under the marquee.

Once order had been attained and damp hairdos rearranged, the committee sat down for a welcome drink, thinking that they might be the only guests. How wrong they were! Trust members and friends proved to be a hardy lot. They began to arrive promptly at 5.30pm braving the elements with an assortment of wet weather gear ranging from elegant umbrellas to hiking jackets. Within half an hour the party was in full swing with people huddled under the canvas but generally enjoying themselves. The annual raffle was drawn and Ellen Gibbon and Rosina Ackhurst were the lucky winners. Grateful thanks are extended to Calthorpes' staff and volunteers Bev, Wendy and Shirley for their help in setting up and conducting tours of the house. Thanks also to the Membership Committee for providing the food and manning the bar, and to all the loyal Trust members who supported the organisers and made the event such a success. We would also wish to thank Canberra Historic Places for their generosity in letting us use the facilities at Calthorpes' House and most importantly the marquee that saved the day!



# OUR VOLUNTEERS ARE VALUED

This area is for news and information on and about our volunteers.

We have several areas within the National Trust (ACT) where volunteers play an important part in the survival of the Trust. Our Council and all our committees are made up of volunteers who give up their valuable time to attend meetings and work behind the scenes for the Trust. The various committees are:

**Finance Committee:** this small group oversees the finances of the Trust and the financial details of the shop. It meets regularly and works quietly in the background. It is largely responsible for the Trust making the small annual profits we have lately enjoyed.

**Heritage Committee:** under the guidance of the Chair and the Heritage Officer this committee carries out one of the primary functions of the Trust - the protection and conservation of our cultural and natural significant places. It is made up of professional people with expertise and experience in heritage management. Their skills range through architecture, town planning, engineering, archaeology, history, biology, and heritage assessment.

**Membership Committee:** this committee organizes functions and activities for the benefit of members and volunteers. It looks at ways of increasing our memberships and retaining existing members. It meets on the fourth Wednesday of the month at The Old Parliament House Shop. This committee is a very important link between members and the National Trust (ACT) Council.

**Publication Group:** although not formally a committee this group plans, designs and edits the magazine for publication and coordinates the contributors of articles to be published. It is entering new realms in its operations, with this the first production of a national magazine with a local Territory insert.

**Tours Committee:** this committee is made up of members of Council, staff and our tour leaders. It coordinates the many local, regional, national and overseas tours which make up the Travels with the Trust programme. Many Trust members have experienced and continue to enjoy the tours which this committee oversees.

**Council:** last but by no means least this group of volunteers is the governing board of the ACT National Trust. They meet every six weeks to manage and oversee all the functions of the Trust and carry out many activities and work projects as sub-groups and individuals. They have recently developed a new charter which will be the guide for planning and managing the Trust's activities for the years to come.

## AND THE NOMINEES ARE...

Remember your nominations for this Year's volunteer of the year. We need your nominations by Wednesday the 25th of October. Both you and your nominee must be members of the National Trust (ACT). The nominee must have been actively and regularly involved as a volunteer throughout the calendar year and one whose activities have made a strong contribution to the success of the National Trust (ACT). The nominee can be active in any aspect of the Trust's activity. For further information and nomination forms please contact Dianne Dowling at the OPH Shop on 6273 4744.

## ITS A WRAP

The last wrap and pack group posting "Heritage in Trust" October 2005 were: Robert Abel, Beryl Burgess, Margot Girle, Neville Halgren, Robyn Maher, Tiffany Manning, Jean McClennan, Margaret Roseby and Frances Tregellas-Williams.

Special thanks to Audrey Sear and Alma Featherstone. Number wrapped and posted 1309.

**The second largest mail out ever -  
Thank you all.**

## Volunteers Luncheon

The National Trust (ACT) values the assistance that all the volunteers give and one way of recognising them is to invite them to a luncheon. This was held in December, with the kind generosity of Canberra Historic Places, at Mugga Mugga.

This venue is well suited for the luncheon, as some of the volunteers present are guides at the small homestead. The weather was just right and the spread prepared by the members of the Membership Committee was excellent.

Our volunteer of the Year Mrs Eunice Jukes was presented with her certificate, together with the volunteers who have given ten years of service to the National Trust.

The Trust thanks the membership committee for making this event possible. The members currently are:

*Dianne Dowling (chair), Viggo Pederson (Secretary), Rosina Akhurst, Pam Belnke, Rita Bishop, Margaret Howard, Anna Moreing, Adele Rosalky, and Maree Treadwell.*

## volunteer of the year

Our VOLUNTEER OF THE YEAR for 2005 is Mrs Eunice Jukes. Eunice has been a member and volunteer with the ACT National Trust since 1997 and has volunteered at *Mugga Mugga* and *Lanyon*. She was also a member of the former *Lanyon* Volunteer Committee for 3 years, representing the interests of volunteers at all three Historic Places. Eunice travels to Melbourne every two months to spend quality time with her grandchildren, and still manages to slot in volunteering at both *Mugga Mugga* and *Lanyon*.





## Members,

In accordance with the ACT National Trust's new vision to be an independent and expert community leader in the conservation of our cultural and natural heritage, we have re-established a working Heritage Committee. A meeting of former members of this committee was held on 14th December 2005 and it was decided that there was a need for a group of experts, dedicated to the preservation of our heritage places, to be actively pursuing the Trust's vision. The committee is made up of the following members:

*Helen Carlile (Councillor)*

*Ken Chareltton*

*Paul Cohen (Chair)*

*Peter Dowling (Heritage Officer)*

*Shibu Dutta*

*Maree Treadwell*

*Lloyd Wrigley*

The first meeting of the committee was held on Tuesday 17 January. The outcomes of the meeting were:

The committee will not meet on a regular fixed time (i.e. once a month as the former committee did) but would maintain communication via the Chair and Heritage Officer by email. Meetings will be arranged on a 'needs basis' to discuss and formulate Trust responses to specific heritage issues. The committee will function on two streams.

The first will be a proactive/reactive response to various heritage-related issues, which arise and require action within a limited time frame. Current issues which are of concern and are actively being pursued are:

- ☞ A proposed development in the grounds surrounding the National Library. The Heritage Officer has written to the National Planning Authority asking for more information on this development.
- ☞ Acton House. The Trust is concerned about the preservation of the significant fabric of the Acton House building as a result of a new development that is occurring on site.
- ☞ The development of Goodwin Homes in the Heritage Listed area of Reid.
- ☞ Tharwa Bridge. There have been recent structural changes to strengthen the bridge and the Trust is now concerned for its long-term future.
- ☞ Belconnen Naval Transmitting Station. Our Heritage Officer in the national section of the magazine has written an article on this piece of Canberra's national and defence history.
- ☞ Productivity Commission report. This recently released report is causing a great deal of alarm and concern in both government and non-government heritage bodies. There have been several letters in the Canberra Times and other capital city newspapers expressing unease on the recommendations from this committee. In effect, it makes several recommendations which, if imposed, would threaten the conservation and future retention of places with heritage values. The Australian Council of National Trust has prepared an extensive response to the Commission's report and will be discussing its recommendations with the commissioners in the near future.

The second functional stream of the new committee will focus on forming a constructive leadership/consultative policy aimed at contributing sensible and logical advice to local and government planning bodies. This policy will be developed, implemented and reviewed over a long-term period. The major aim of this policy is to promote the Trust as a serious and trustworthy organization focusing on ACT heritage issues, capable of providing constructive comment and leadership on planning and heritage issues.

For example, one such issue under this stream will be the implementation of Draft Variation 200 to the Territory Plan (Residential Land Use Policies). A position paper by ACT Planning and Land Authority will be released for comment in March 2006. The committee will provide comment on this paper after its release.

Dr Peter Dowling - Heritage Officer and Vice President of The National Trust Australia (ACT)





Happy New Year to all Trust members,  
2006 is shaping up as an exciting and varied year for our travellers.  
Europe, South Africa & Japan form the backdrops for our overseas tour plans and locally we are  
proposing tours packed with historical, geographical and cultural interest.

What more could you ask for?

Read on and, if you are tempted, please register your expressions of interest as soon as  
possible, because, as you know, our programs are very popular and fill up rapidly.

*Alan Kerr*

Chair of Tours With the Trust 2006

#### TRAVELLERS NOTE: TRAVELS WITH THE TRUST

Whilst the National Trust (ACT) maintains Public Liability Insurance cover, it is necessary to remind applicants that most activities involve some element of risk. Bushwalking, in particular, is an inherently dangerous activity and requires a reasonable level of fitness. Whilst the National Trust (ACT) will endeavor to protect your safety, it cannot remove all the dangers. Anyone undertaking activities should be aware that they are participating at their own risk. The National Trust (ACT) must also assume that each applicant has levels of acuity, mobility and fitness appropriate to the particular activity.

"I was hoping we could get away from urban renewal issues on this trip."



Drawing by David C. Gerard: C. 1970 Parade Magazine, July 19th

#### CAMPBELLS CANBERRA

DATE	Sunday April 2 2006
TIME	9.15 am to 5pm
COST PER PERSON	\$40 pp by March 17th
LIMIT	30

A DISTINCTIVE TOUR OF CANBERRA'S EARLY HISTORY.  
Join Adele Rosalky for a tour which will highlight a hundred years of pre-Federation Canberra and is centered on the former estate of Robert Campbell and his descendants. We will visit *Duntroon House, the Duntroon Woolshed, Duntroon Dairy, Blundell's Cottage, St John's Church & churchyard, the Schoolhouse and Mugga-Mugga*. Even if you have visited some of the sites before, this tour offers an unusual insight into the layers of life on the pastoral estate. The tour will start at 9.15 am with morning tea and an introductory illustrated talk at the National Trust office, 1st Floor, North Building, Civic Square, and will conclude there at 5.00 pm.

Introducing local historian & tour leader of Campbells Canberra Adele Rosalky. Adele is also on the Board of the National Trust and contributes to the Heritage Committee.



EASY DAY TRIP  
MORNING TEA PROVIDED  
BYO PICNIC LUNCH & small fold-up seat.



## ORANGE HOMES & GARDENS

DATE	Sat 22 & Sun 23 April 06
COST	\$325 pp dbl/tw \$360 pp sgl
BOOKINGS CLOSE	14 March
FULL PAYMENT	14 March
LIMIT	Self drive or Wait list

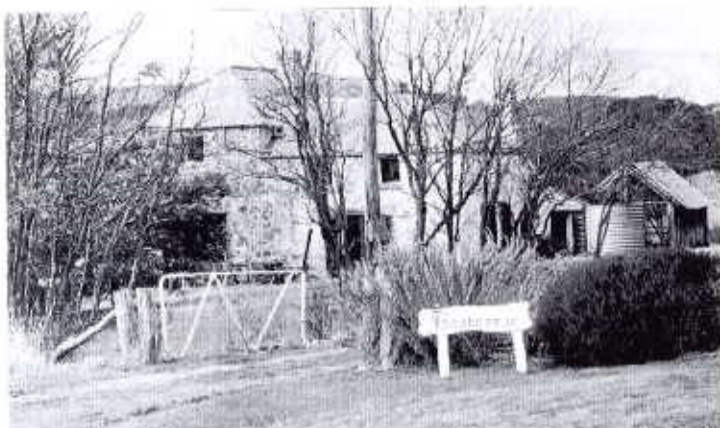
At the time of writing, all places for travel by coach have been taken. If you wish to be placed on the Wait List, please ring the Trust Office. A few self drive places may also be available.

The 4 houses (in and around Orange) to be visited on the Saturday, comprise *Boree Cabonne* and *Suma Park* (both out of town) plus *Galbally* and *Strathroy* (both in Orange). The afternoon will conclude with an exclusive drinks party in the garden of *Badine*, home of ACT Trust member, Kathie Mills, who led our garden tours to the UK and France in 2001 and 2003.

The 3 properties to be visited on Sunday morning are all located in the vicinity of Byng (to the east of Orange) comprising *Mayfield*, *Springfield* and *Bookanon*.

The ticket price includes entries to all properties, return coach travel, one picnic and one restaurant lunch, the drinks party, teas and overnight DBB accommodation (with wine) at the Oriana Motor Inn.

People who have already paid the \$30.00pp deposit are reminded that balances \$295 dbl/tw or \$330 pp sngl (Deduct \$5.00 for Trust members or add \$5.00 pp non-members and U3A) are payable by 14th March.



*Bookanon* located just to the east of Orange

EASY, SOME WALKING, WEEKEND TRIP  
COACH TRIP / SELF DRIVE OPTION  
INCLUDES MOST MEALS

## SOUTHERN TABLELANDS HOMES & GARDENS

DATE	Sat 6 & Sun 7 May 06
COST	\$63.00 pp \$68.00 non members

The National Trust (ACT) is holding a number of tickets for this weekend of private house and garden inspections, being run by the Women's Committee of the National Trust (NSW). The houses are all relatively new, but full of interest.

Details were not available when we were finalising copy, but the 4 Saturday inspections (3 houses and 1 garden - 10.00-12.00 and 2.00-4.00) will all be located in the lovely countryside between Bowral and Robertson.

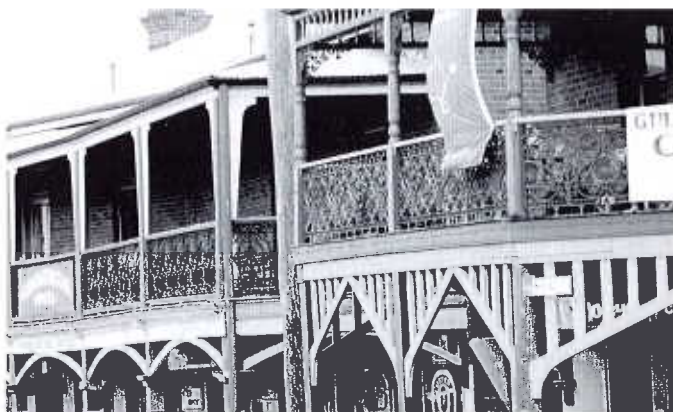
On Sunday morning (9.30-12.30), the 3 houses open for inspection are all located on The Gib. By the time you read this, the Trust Office should be able to provide more information. Places are only being offered on a self-drive, self-accommodate basis. However, as the area is only about 2 hours' drive from Canberra, it would be feasible to return home on Saturday evening if you did not wish to arrange accommodation locally.

Inspection tickets and directions will be posted to applicants around mid April.

Notes on each property will be issued on 6 May.

If desired, a limited number of vouchers (for a picnic lunch at Robertson on the Saturday) can also be pre-purchased at \$15pp.

EARLY APPLICATION ESSENTIAL, BECAUSE OF THE LARGE NUMBER OF POTENTIAL SYDNEY APPLICANTS. IF PROPOSING TO STAY OVERNIGHT, YOU SHOULD ALSO BOOK ACCOMMODATION AS SOON AS YOUR PLACE HAS BEEN CONFIRMED.



Typical architecture of the area - Main Street, Gulgong, NSW.

EASY, SOME WALKING, TWO DAY EVENT  
SELF DRIVE / SELF ACCOMMODATION  
SELF CATER



## RIVER RUN

**DATE LIMIT**                      **Thurs 4 to Wed 17 May 2006**  
**currently FULL**

Mini-coach tour by Australian Eco Adventures (AEA) from Sydney to the Macquarie Marshes, the Barwon fish traps, Bourke, Tilpa, Menindee, the Kinchega, Mungo and Hattah-Kulkyne NPs, the Barmah wetlands, Echuca, Beechworth and Batlow, with an overnight cruise on the Murray and meal with Stefano de Pieri.  
5 applicants have booked through the Trust.

TO CHECK ON POSSIBLE VACANCIES  
OR A REPEAT TOUR, PLEASE RING GARTH SETCHELL  
on 02 629 01100

## TOPS TO MYALLS HERITAGE TRAIL

**DATE**                                      **Fri 17 to Mon 20 March**  
**includes the Canberra Day**  
**L W/end**  
**DEPARTURE TIME**                      **7.30am on Friday**  
**RETURN TIME**                              **9.00pm on Monday.**  
**COST**                                      **\$650pp dbl/tw**  
**\$710pp sgl**  
**non-members add \$10pp**  
**BOOKINGS CLOSE**                      **13 Feb**  
**FULL PAYMENT**                          **13 Feb**  
**LIMIT**                                      **16**

Plans are now finalised for this exciting walking tour along selected sections of the Tops to Myalls Heritage Trail, to be led by Garth Setchell. It includes a 15km ridge-top walk on Saturday starting amongst the lovely antarctic beech forest at Gloucester Tops – but with a 400m descent & 300m ascent.

On Sunday there is an easier 2km walk through magnificent stands of flooded gum, brushbox and tallowwood and on Monday morning a 7km level walk from Mungo Brush to Dark Point in the Myall Lakes National Park.

DBB accommodation has been arranged at the Bucketts Way Motel at Gloucester (2 nts) and in cabins at Myall Shores Resort (Sun nt). Good fitness is essential if you wish to do the full Saturday walk. However, a shorter walk at Gloucester Tops, with some local sightseeing on the minibus, offers an easy alternative. The price includes all transport, picnic lunches on Sat and Sun, plus 3 nights' DBB accommodation with wine.

GOOD FITNESS RECOMMENDED *BUT*  
ALTERNATIVE AVAILABLE ON SATURDAY.  
FOUR DAY TRIP TRANSPORT BY MINI COACH

## HENRY LAWSON TRAIL

**DATE**                                      **Fri 9 to Mon 12 June 2006**  
**includes the Queen's**  
**B'day Long W/end**  
**DEPOSIT**                                  **\$50.00 pp**  
**FULL PAYMENT**                          **5 May**  
**LIMIT**                                      **24**

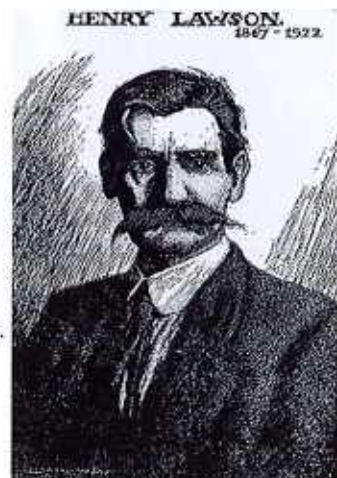
Explore the life and times of one of Australia's best-known poets and writers.

The coach tour will be led by Adele Rosalky and coincides with Gulgong's Henry Lawson Festival. This trip will offer an exciting mix of historic, natural and live attractions.

The first day will include a visit to Lawson's birthplace at Grenfell and a lunch-time stop in Canowindra (BYO lunch), where we will also view the Age of Fishes Museum and an interesting private home. On Saturday, participants will be given a guided tour of Gulgong but are then free to enjoy the Festival program and sights of Gulgong.

We will tour the Mudgee area on Sunday, with visits to two historic properties, the home of Vanessa Cox and *Burrundulla*, and lunch at Craigmoor winery, followed by a side trip to Rylstone and the edge of the Wollemi National Park.

On Monday we return via the Hill End Historic Site and Sofala. The ticket price includes 3 nights DBB accommodation at the Ten Dollar Town Motel, Gulgong, wine with dinners, lunch on Sunday and Monday, teas etc en route, entry to historic properties and site tours, with a night's entertainment at the Prince of Wales Opera House, Gulgong.



EASY, FOUR DAY TRIP  
COACH TRANSPORT  
INCLUDES MOST MEALS  
B.Y.O LUNCH ON FIRST DAY



## AUSTRALIAN BATTLEFIELDS OF THE WESTERN FRONT

DATE Sun 20 Aug to Sat 2 Sept 2006  
 COST\* \$8,000 pp dbl/tw  
 \$9442 pp sgl  
 EXPRESSION OF \$50.00 pp  
 FULL PAYMENT 5 May  
 LIMIT 24

*Graeme Beveridge, the tour leader, has visited the Western Front on many occasions as an Australian War Memorial guide over the last 10 years. Graeme has an intense interest in Australia's WW1 military history and is happy to do preliminary research for tour members having connections with a person or place.*

We will visit victory sites where Australian forces forged a reputation for courage and daring second to none. We will also visit memorials and cemeteries, to give tour members a chance to see the graves of relatives, and we will



Light Horse Memorial, Anzac Parade, REID.  
 Photograph by SA Ollier

also attend the moving Last Post ceremony, conducted every evening since 1928 at the Menin Gate Memorial in Ieper, Belgium. The tour takes in a visit to the ancient city of Bruges, with its canals and the beautiful 12th century cathedral. The tour allows free time to explore Paris and finishes with two nights in London. This is an extremely rare and exciting opportunity to explore a vital part of our Australian culture - and a opportunity for many to fill in the blanks on the family tree, with the faces of the boys who were never seen again.

\*Final costs will be influenced by numbers and exchange rates, etc, but should be known by April. \$45 is refundable should you withdraw.

### ✈ INTERNATIONAL TRIP

The tour is being arranged through licensed travel agent, Boronia Travel, of Melbourne.

## SOUTHERN AFRICA

DATE Fri 8 Sep to Sat 7 Oct 2006  
 COST \$10800 pp dbl/tw  
 \$12200 pp sgl

This exciting tour of Namibia and South Africa is being led by Garth Setchell. The tour will now be entirely by coach, except for flights each way between Johannesburg and Windhoek. A detailed itinerary is available from the Trust Office. With 26 persons having already paid their deposits, we are now only able to offer places on the Wait List. However, as cancellations can occur, don't delay in putting your name down.

WAIT LIST APPLICANTS SHOULD LEAVE CONTACT DETAILS WITH THE TRUST OFFICE.

### ✈ INTERNATIONAL TRIP

The tour is being arranged by through licensed travel agent, Bench International of Sydney.

## Travelscene Canberra City

Licensed Travel Agent. Owned and operated by Jetaway Travel PTY. LTD  
 A member of the Travelscene American Express Travel Group  
 Corporate Member of The National Trust of Australia

We offer a onestop travel shop with a full range of travel services including: " international and domestic flights, " great hotel rates, " holiday packages, " group tours, " coach tours, " cruises, " car rentals, " rail travel, " sightseeing, " event tickets, " travel insurance, " travellers cheques, " visa information, etc.

Lower Ground Floor, Ethos House,  
 28-36 Ainslie Avenue, Canberra City  
 Open 9am - 5pm Monday to Friday.

saturday morning & afterhours consultations by appointment only

Tel 6247 6544  
 Fax 6247 7638

website [www.jetaway.com.au](http://www.jetaway.com.au)  
 Email [jeataway@jetaway.com.au](mailto:jeataway@jetaway.com.au)

**Travelscene** WINNER - Metropolitan Travel Agency of the Year 2002  
 Canberra City

## BENSLEY'S BUS & COACH

Golf, Bowls, Shopping & School Charters

Stadarm Pty Ltd.  
 ACN 003 066 448

Ian Bensley  
 Proprietor  
 19 Monkitee Street  
 BRAIDWOOD NSW 2622

phone 02 4842 2689  
 mobile 0417 924 674  
 fax 02 4842 1248

Email: [benzbus@braidwood.net.au](mailto:benzbus@braidwood.net.au)  
 WWW: <http://www.ozebiz.com.au/bensleys>

## JAPAN IN AUTUMN

DATE	Monday 23 October 2006
COST*	\$6,000 pp
EXPRESSIONS OF	\$50.00 pp
DEPOSITS	5 May
LIMIT	26

Once again Michael Hodgkin is organising an Autumn trip to Japan; this time visiting some new and interesting places in Shikoku and Kyushu not covered on previous tours.

We will start the tour with two nights in Kyoto where there is much to see at this time, particularly in Autumn. We then head to Koya san in Wakayama Prefecture, travelling through stunning autumn forests and ancient temples, down to the spectacular scenery of Iya Valley. Matsuyama in Shikoku is our next destination - seeing the castle, temples and onsen.

We then take the ferry across to Beppu in Kyushu (hot springs) and go to Kumamoto and Nagasaki before returning to finish the tour in Kyoto - a total of 14 nights in Japan.

We stop two nights in each place to allow time to relax, keep up with laundry etc, in Japanese style "ryokans" - but we will have a hotel break in the middle. Current planning, subject to bookings, leaves Canberra on Monday 23 October. Total cost - inclusive of fares, accommodation, dinners and breakfasts expected to be \$6,000 per person - \*based on current rate of exchange between \$A and Japanese Yen.



### ✈ INTERNATIONAL TRIP

APPROX 15 Night in Japan

AIR, COACH & FERRY

Arranged in conjunction with international tour agent

## ANCIENT GREECE

DATE	April/May 2007
COST	Final costs should be known by June 2006
EXPRESSION OF	\$50.00 pp
LIMIT	30

Dr Peter Dowling will lead this tour taking in the sites of classical Greece and the ancient Minoan culture. The tour begins in Athens where we spend the first two to three days experiencing the history and treats of the city - the highlight being a guided tour of the Acropolis. From here we board an air-conditioned coach and tour the mainland sites of classical Greece for around 10 days. We cross the impressive Corinth Canal to the ancient theatre of Epidaurus and then a short stop to the old town of Nafplion, which has seen generations of conquering Byzantine, Franks & Turks.

Mycenae is our next destination, to visit the Lion Gate and Beehive Tombs. Our coach will then take us through the Peloponesian Lands to Olympia where we visit the famous stadium and museum. We then cross the Corinth Bay to Delphi & the sanctuary of Appolo. Meteora, one of the most amazing spectacles in Greece - where monasteries are perched on enormous rock outcrops - and Mount Olympus - will be the next places on our tour.

We then make our way to Thessalonica with an excursion to Pella, the heart of this ancient kingdom, and birthplace of Alexander the Great.

Heading south again toward Athens, we will visit Theropylae, the site of that famous battle in 480BC where a handful of brave spartan soldiers defied the might of the Persian army before they were betrayed and killed.

After a day resting in Athens, we embark on a small cruise of the Cycladic islands, with our destination being Crete, the largest island in the group. We will base ourselves at Herklion, a centrally located port town which is ideal for exploring the island. It is here we will experience the ancient Minoan sites. The Minoan culture arising in 1700BC is thought to be the forerunner to the great Classical Greek culture, and those of Western Europe. We then visit Rethymon, Chania and Sitia - a delightful fishing village with the archeological sited of Zacros and the Topulou monastery. We travel back to Athens by ferry and have a free day for some retail therapy before the tour ends. Those intending to travel further in Europe can make arrangements with Travelscene.

### ✈ INTERNATIONAL TRIP

APPROX 21 DAYS

AIR, COACH & FERRY

Arranged in conjunction with Travelscene Canberra



## OPERA FANTASTICA

DATE	Sat 22 Sun 23 July 2006
TIME	Depart 7.30am
DEPOSIT	\$100.00 pp 1 Opera \$150.00 pp 2 Operas
TOTAL COST	see below
FULL PAYMENT	16th June
VENUE	Sydney Opera House

With the option of attending either, or both, the following operas by Opera Australia  
**Delibes' opera Lakme, with Richard Bonyngne conducting (between 1.00 and 4.00pm) and/ or Puccini's opera Turandot directed by Graeme Murphy (between 7.30 and 10.30pm).**  
 The program involves departing Deakin at 7.15am, allowing time for you to arrange your own lunch at The Quay before the Saturday matinee. Those not wishing to attend Lakme will be taken to our hotel (The Harbourview at North Sydney – where they can rest) or collected from the Opera House at 3.45pm. Those not wishing to attend Turandot can opt to join the group for an ample 1-course dinner at our hotel at 5.45pm or enjoy a free night.



Things are looking up at Elizabeth Bay House - one of the features of OPERA FANTASTICA

On Sunday morning you can sleep in a little! Leaving 9.30am, we visit historic Elizabeth Bay House before proceeding to La Perouse, to view Bare Island Fort and visit the La Perouse Museum (in the former Cable Station), followed by lunch at The Boatshed Café - returning Canberra 5.30pm approx. For A-Reserve seats, top class B&B accom, transfers, a quick meal on Saturday evening plus entries and lunch on Sunday, the total cost, including deposit, is \$420 pp dbl/tw or \$490 pp sgl for one opera (with free time) or \$550pp dbl/tw, \$625 pp sgl for both operas. This represents great savings on individual ticket prices!

## AFTERNOON CONCERT SERIES AT THE SYDNEY OPERA HOUSE

DATES	March/ May/October 2006
DEPARTURE TIMES	Deakin 7.10am Civic 7.20am Braddon 7.30am
COST A RESERVE	\$122.00 pp
COST B RESERVE	\$112.00 pp
DEPOSIT	\$30.00 pp all concerts
BALANCE	30 days prior to concert non-members add \$3 pp
RETURN TIME	8.00 to 8.30pm
LIMIT	50 per concert
CANCELLATION FEE	\$5 pp + costs

As in 2005, the tours will be led by Garth Setchell and the package comprises return travel to Sydney by coach, refreshments on the way down and a one-course meal with tea/coffee on the return.

Both A and B Reserve places remain available on each of the following one-day concert tours to enjoy matinee performances by the Sydney Symphony Orchestra:

### CONCERT A Thursday 2 March 2006

#### Mozart's Masterpieces

*Gianluigi Gelmetti conductor*

*Michele Campanella & Monica Leone pianists*

MOZART Symphony No 40

MOZART Concerto for Two Pianos

RAVEL Daphnis & Chloe – Suite No 2

### CONCERT B Thursday 11 May 2006

#### Dvorak's Cello Concerto

*Gianluigi Gelmetti conductor*

*Antonio Meneses cello*

DVORAK Cello Concerto

PROKOFIEV Symphony No 5

### CONCERT C Thurs. 26 Oct 2006

#### Tchaikovsky's Symphony No 4

*Jaap van Zweden conductor*

WAGENAAR Cyrano de Bergerac – Overture

SCHUMAN Concert-piece for Four Horns & Orchestra

TCHAIKOVSKY Symphony No 4

Reduced prices available if joining and/or remaining in Sydney. All tours allow about 2 hours between arrival in Sydney and the start of the concert, so that you can enjoy a lunch of your own choice at The Rocks or The Quay.

**FOR THE MARCH CONCERT, YOU WILL NEED TO RING GARTH SETCHELL on 62901100 IMMEDIATELY.**

#### EASY DAY TRIP

#### COACH TRANSPORT

INCLUDES REFRESHMENTS AND EVENING MEAL

# TRAVELS WITH THE TRUST - BOOKING FORM

Please post this form to the Ticket Secretary, National Trust of Australia (ACT), PO Box 1144, Civic Square ACT 2608, Although requests for further details will be posted out as soon as possible, please note that activity leaflets, receipts, etc, are often only posted out a few weeks before each activity. Unless otherwise stated, cheques should be made payable to the National Trust (ACT).

Places are reserved in order of payment. EARLY APPLICATION ASSISTS US WITH ARRANGEMENTS. Where deposits or booking fees are invited, places are reserved in order of receipt, provided subsequent payments are received by the date (s) advised for payment.

Whilst the Trust makes every effort to ensure the quality and safety of the walks and tours on offer, applications are accepted only on the understanding that applicants participate at their own risk. In order to ensure that applicants for the more expensive tours receive protection under the Travel Compensation Fund against default by external suppliers and agents, and acting on the advice of the ACT Registrar of Agents, payments for such tours (other than the Trust's booking fees) will need to be paid to the relevant travel agent. Details will be advised to each applicant.

Where offered, the junior (junr) rate applies to children (10 yrs +) and to full-time students, the senior (senr) rate applies to card-holding senior citizens and pensioners, and the adult (adult) rate applies to all others. A surcharge is generally applied to non-members (nonm) of the Trust (including U3A members) to encourage Trust membership. All quoted prices include applicable GST. Unless otherwise indicated, a minimum fee of \$5 (at cost after the "Bookings Close" date) may be retained on any cancellation refunds.

Queries to the Trust Office (ph 02-62300533) or to the tour/walk leader where indicated.

SURNAME \_\_\_\_\_ TITLE \_\_\_\_\_ GIVEN NAME \_\_\_\_\_ M'SHIP NO \_\_\_\_\_

ADDRESS \_\_\_\_\_

EMAIL \_\_\_\_\_ PHONE (H) \_\_\_\_\_ (W) \_\_\_\_\_

SPECIAL REQUIREMENTS (eg. Dietary needs, ground floor accom, etc) \_\_\_\_\_

PAYMENT ☐ CASH ☐ CHEQUE ☐ B/CARD ☐ M/CARD ☐ VISA ☐ AMEX ☐ DINERS

Card Number \_\_\_\_\_ Personal Verification No \_\_\_\_\_ Expiry date \_\_\_\_ / \_\_\_\_

Name on Card \_\_\_\_\_ Signature \_\_\_\_\_

## AFTERNOON CONCERT SERIES AT THE SYDNEY OPERA HOUSE

### Concert A Thursday 2 March 2006 -Mozart's Masterpieces

A Reserve seats – please contact Garth Setchell immediately

\_\_\_\_\_pers

B Reserve seats – please contact Garth Setchell immediately

\_\_\_\_\_pers

### Concert B Thursday 11 May 2006 -Dvorak's Cello Concerto

A Reserve seats – deposit (bal \$92/95\*pp payable by 11 Apr)

\_\_\_\_\_pers @\$30pp

\$ \_\_\_\_\_

B Reserve seats – deposit (bal \$82/85\*pp payable by 11 Apr)

\_\_\_\_\_pers @\$30pp

\$ \_\_\_\_\_

### Concert C Thursday 26 October 2006 -Tchaikovsky's Symphony No 4

A Reserve seats – deposit (bal \$92/95\*pp payable by 31 Aug)

\_\_\_\_\_pers @\$30pp

\$ \_\_\_\_\_

B Reserve seats – deposit (bal \$82/85\*pp payable by 31 Aug)

\_\_\_\_\_pers @\$30pp

\$ \_\_\_\_\_

Non-member surcharge - ADD \$3 pp/CONCERT when paying balances

\$ \_\_\_\_\_

Coach pick-up point ☐ Braddon ☐ Civic ☐ Deakin

Join and/or remain in Sydney for Concerts ☐ A ☐ B ☐ C

Names of others covered by this application: \_\_\_\_\_ SUB-TOTAL \$ \_\_\_\_\_



**TOPS TO MYALLS - Friday 17 to Monday 20 March 2006** Expression of interest please contact Garth Setchell

**CAMPBELL'S CANBERRA - Sunday 2 April 2006**

All National Trust members \_\_\_\_\_ mbrs @ \$40 pp \$ \_\_\_\_\_  
National Trust /senior /concession DEDUCT FROM RELEVANT RATE ABOVE \_\_\_\_\_ conc @ \$2 pp \$ \_\_\_\_\_  
Non-member /U3A ADD TO MEMBER RATE ABOVE \_\_\_\_\_ nonm @ \$2 pp \$ \_\_\_\_\_  
Names of others covered by this application: \_\_\_\_\_  
SUB-TOTAL \$ \_\_\_\_\_

**ORANGE HOUSE & GARDEN INSPECTIONS - Saturday 22 & Sunday 23 April 2006**

Expressions of Interest - please contact Trust Office if you are interested in self drive  
or wish to be placed on the Wait List.

**RIVER RUN - 4 to 17 May 2006** - contact Garth Setchell for expression of interest

**SOUTHERN HIGHLANDS HOUSE & GARDEN INSPECTIONS - 6 and 7 May 2006**

All National Trust members \_\_\_\_\_ mbrs @ \$63 pp \$ \_\_\_\_\_  
All non-members (incl U3A members) \_\_\_\_\_ nonm @ \$68 pp \$ \_\_\_\_\_  
All persons requiring picnic lunch on Saturday (optional) \_\_\_\_\_ mbrs @ \$15 pp \$ \_\_\_\_\_  
Names of others covered by this application \_\_\_\_\_  
SUB-TOTAL \$ \_\_\_\_\_

**THE HENRY LAWSON TRAIL - Friday 9 to Monday 12 June 2006**

All National Trust members – dbl/tw accom. \_\_\_\_\_ mbrs @ \$680 pp \$ \_\_\_\_\_  
All National Trust members – sgl accom \_\_\_\_\_ mbrs @ \$840 pp \$ \_\_\_\_\_  
National Trust /senior/ concession DEDUCT FROM RELEVANT RATE ABOVE \_\_\_\_\_ conc @ \$5 pp \$ \_\_\_\_\_  
Non-member/ U3A ADD TO MEMBER RATE ABOVE \_\_\_\_\_ nonm @ \$10 pp \$ \_\_\_\_\_  
Coach pick-up point ☐Deakin ☐Civic ☐Braddon  
Names of others covered by this application: \_\_\_\_\_  
SUB-TOTAL \$ \_\_\_\_\_

**OPERA FANTASTICA - Saturday 22 and Sunday 23 July 2006**

Deposit – one opera only \_\_\_\_\_ pers @ \$100 pp \$ \_\_\_\_\_  
Deposit – both operas \_\_\_\_\_ pers @ \$150 pp \$ \_\_\_\_\_  
If *not* booking for Turandot join Saturday night dinner? (saving \$25pp) ☐YES  
Accom requirement ☐Sgl ☐Dbl ☐Twin  
Coach pick-up point ☐Braddon ☐Civic ☐Deakin  
Names of others covered by this application \_\_\_\_\_  
SUB-TOTAL \$ \_\_\_\_\_

**AUSTRALIAN BATTLEFIELDS OF THE WESTERN FRONT - 20 August to 2 September 2006**

Expression of interest \_\_\_\_\_ persons @ \$50 pp \$ \_\_\_\_\_  
Names of others covered by this application: \_\_\_\_\_  
SUB-TOTAL \$ \_\_\_\_\_

**SOUTHERN AFRICA - 8 to 7 October 2006** contact National Trust Office to register for wait list

**JAPAN IN AUTUMN - Tuesday 28 October to ?? November 2006**

Expression of interest \_\_\_\_\_ persons @ \$50 pp \$ \_\_\_\_\_  
Accom requirement ☐Sgl ☐Dbl ☐Twin  
Names of others covered by this application: \_\_\_\_\_  
SUB-TOTAL \$ \_\_\_\_\_

**ANCIENT GREECE - April/May 2007**

Expression of interest. Final cost to be confirmed \_\_\_\_\_ persons @ \$50 pp \$ \_\_\_\_\_  
Accom requirement ☐Sgl ☐Dbl ☐Twin  
Names of others covered by this application: \_\_\_\_\_  
SUB-TOTAL \$ \_\_\_\_\_

## Competition

Once again the National Trust of Australia (ACT) is holding a Heritage competition for youth and children aged 9 to 18, with the theme "Living treasures". This year's competition will be bigger and better with the winning entries published. We are asking children and young people aged 9 to 18, to interview an older person in the ACT and region, on the theme "Living Treasures". We are particularly interested to hear stories from a wide variety of cultures.

In previous years we have asked children to interview older people in the ACT community about "places in their heart" and "Connections to the ACT and region". The quality of the entries received has been superb. Winning entries from previous competitions are being compiled into a book, which will be launched in March/April 2006. ACT and regional schools, previous entrants and community groups will receive a copy of the publication.

Entries can be presented in a variety of media including a performance or play (recorded on DVD), a story or a CD, DVD or multi-media presentation, Power Point presentation, a poster or a piece of art (painting, sculpture, t-shirt).

Winners will receive cash and supplementary prizes from a variety of organisations in the ACT. Previous prizes have been donated by the National Museum of Australia, Questacon, Namadgi National Park, Tidbinbilla Nature Reserve, Travelscene Canberra, National Botanic Gardens, Historic Places ACT and the National Trust of Australia (ACT).

Entry forms and further information will be available from schools and community groups, and from the National Trust of Australia (ACT). Entries close on Monday 16 October and winners will be announced during the November Heritage festivities. The National Trust can put you in touch with many suitable interview subjects. We hope you enjoy participating in our Heritage competition as much as we enjoy looking at your contributions.



## RELOCATING...

Maree Treadwell is moving across to the ACNT head office in Campbell. We will still see her in the office - although continuing her ubiquitous support of the Canberra branch on committees and groups, her focus will be on national level education. Maree has a BSC with a particular penchant for Bats. She is currently studying MSC wildlife management (habitat) part time. Other passions include: gardening, the environment and endangered places.

## RETIRING...

Shirley Ann Ollier, co-office manager of the National Trust ACT is retiring. She has been with the NT for five years, and will be greatly missed by all. Shirley Anne's professional background encompasses many achievements - including cataloging and curating the photographic collection at the Australian Defence Force Academy which took several years. As a mature age student she obtained a fine arts degree at Canberra School of Art. Shirley Ann is a keen Francophile and her new life will involve spending time with poodle "Muffin", delving into forensic psychology, bric-a-brac fossicking and a renewed interest in all things artistic.

## REMARKABLE...

Chris Davies joins us as a fulltime staff member. Her professional background as a palliative care nurse is complemented with experience as an academic administrator. In addition to managing the demands of a large family, she has also studied counselling for a number of years. Chris has graciously taken over the "hot seat" in the office, and has slotted in seamlessly with her professional, warm manner. Welcome.

"A place in the Heart" by Emily Colonan, Primary winner 2004

This competition is made available through an ACT government CUPP grant and supported by the ACT Heritage Library.

**CONTACT POINT:** Further details, including entry forms, can be obtained from Maree Treadwell at maree@act.nationaltrust.org.au or on 6230 0533 or 0412 311 403.



## DO YOU KNOW ANYONE GOING OVERSEAS?

Don't forget to tell them about the advantages of joining the National Trust.

One of the benefits is the discount available at the shop when they buy those little gifts to take with them.

**All ACT National Trust  
members receive a 15% discount in the  
Shop, other state and overseas  
members receive a 10% discount**



### ACT HERITAGE LIBRARY

ACT Heritage Library helps tell the stories of Canberra and its people. It collects, preserves and provides access to the documents that record the lives of Canberrans and their influence, both where they live and in the wider community.

The collection comprises books, maps, photographs, newspapers, ephemera and records of local organisations and individuals. Research assistance, microform and photocopy facilities are also provided.

Our ImagesACT database at [www.images.act.gov.au](http://www.images.act.gov.au) provides digitised versions of many of the collection's photographs.

Open Mon to Fri 10-5, first Sat of each month 10-2

ACT Heritage Library, Level 1, Woden Library  
Cnr Corinna & Furzer Streets, Woden ACT 2606  
Ph: 62075163, Fax: 62075835

Email: [act.heritage.library@act.gov.au](mailto:act.heritage.library@act.gov.au)  
Web page: <http://www.library.act.gov.au>



Conservation & Restoration of  
Fine Antique Furniture

Professional conservation and restoration services for antique furniture, interiors and related materials. Insurance, museum and private work with particular emphasis on minimal intervention.

10% discount for National Trust members

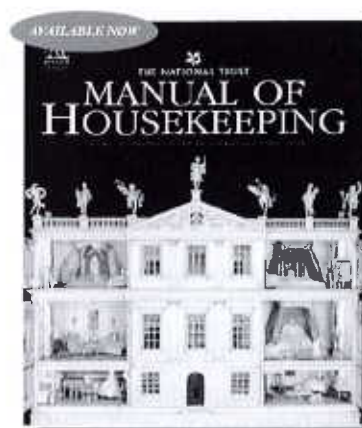
Member of the Australian Institute of Conservators of Cultural Material, Authorised Conservator to the National Trust of Australia ACT & Approved service provider of the Antique Dealers Association of Australia.

[www.patinations.com.au](http://www.patinations.com.au)

Phone: 02 6260 1112  
Unit 4/157 Gladstone Street Fyshwick



AICCM



## THE MANUAL OF HOUSEKEEPING

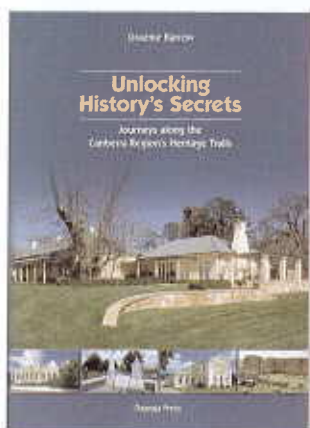
By the British National Trust.  
Elsevier Australia 2005

As huge as it is informative, *The Manual of Housekeeping* is essential reading for all those involved in the care of historic houses and their collections. Building on the success of bestselling earlier editions, this greatly expanded manual covers a wider range of subjects in greater detail and includes the very latest thinking on housekeeping theory and practice. Written by internationally renowned specialists and produced by the National Trust (UK), this book brings together many years of practical experience in the care of hundreds of internationally renowned historic houses and their collections. It appears no stone has been left unturned, (washed, pressed and preserved) in bringing together the contents of this tomb.

I won't hold back! This is what it covers:

- History of housekeeping •Living in historic houses •Transporting objects
- Conservation; principles, practice and ethics
- Agents of deterioration •Physical agents of deterioration
- Chemical agents of deterioration •Biological agents of deterioration
- Light as an agent of deterioration
- Relative humidity as an agent of deterioration
- Planning and managing housekeeping •Housekeeping tasks •Stonework
- Mosaics and decorative tiles •Plasterwork •Painted Interiors
- Wall paintings and painted decoration •Wallpaper
- Woodwork •Floors •Floor coverings •Window glass •Metalwork
- Decorative light fittings •Stone, plaster and terracotta •Ceramics •Glass
- Metals •Arms and armour •Clocks and watches •Scientific instruments
- Musical instruments •Furniture •Gilded and painted wood
- Lacquer & japanning •Leather •Textiles •Tapestries, carpets and rugs
- Linens and whitework •Costume and accessories
- PaperGlazed framed paper and materials •Books •Photographs
- Paintings •Portrait miniatures •Polychrome sculpture
- Natural history collections •Plastics •Collections outdoors
- Outdoor stone •Outdoor metals •Outdoor wood
- World culture collections /Archaeological collections
- Vehicles •Keeping records •Health and safety
- Historic house technology •Opening historic houses
- Staffing historic houses •Storage •Building work
- Planning and protection •Events
- Display cases and exhibitions •Interpreting conservation

Impressed? It's not just for Historic Homekeepers and curators. It is a sizable resource to hunter gatherer types, collectors and archivists. It's available from the Old Parliament House shop at a around \$130.00. National Trust members receive 10% discount and ACT members receive 15% discount at the shop.



## UNLOCKING HISTORY'S SECRETS

JOURNEYS ALONG THE  
CANBERRA REGION'S  
HERITAGE TRAILS

BY GRAEME BARROW  
DAGRAJA PRESS 2005

Many people (not National Trust members of the ACT) believe that the Canberra region has no history or heritage. Graeme Barrow debunks this in his fascinating book "Unlocking History's Secrets - Journeys along the Canberra Region's Heritage Trails."

Graeme Barrow has lived in Canberra since 1969 and written many books, describing walks and on the history of Canberra's region, including "Old Bungendore: Changing Times in an Australian Village" & "Canberra's Historic Houses: Dwellings and Ruins of the 19th Century".

Graeme's love for and interest in the history of the region surrounding Canberra shows through each of his meticulously researched heritage trails. The trails lead us from Canberra to Yass and onto Boorowa and Bowning, Gunning and Gundaroo, Collector, Bungendore, Goulburn, Lake Bathurst and Bungonia, Braidwood, Dalgety and Cooma - exploring heritage in an arc to the north, east and south of Canberra.

Unlike many other road tour books, Graeme brings history alive and shows us the heritage we take for granted but never explore. Many of the places he takes us to, are just names bypassed when we drive to destinations in our busy lives.

A book like this is needed to make us slow down and think about our past and share and explore our heritage. The names of the trips, such as *The brutal murder of 'Happy Jack'* and *The two kings of Gundaroo*, excite our imagination and encourage us to find out more. Graeme Barrow includes references and suggestions for further research. As well as unlocking history's secrets, the author also gives practical details on road conditions and other advice.

Distances given for each Heritage Trail are for return trips.

This book is a worthy addition to your library and makes a great present for new arrivals or visitors to the Canberra area. It is available from the Old Parliament House shop at a RRP of \$25. National Trust members receive 10% discount and ACT members receive 15% discount at the shop.

Maree Treadwell

## WHAT'S NEW?

On behalf of the staff and volunteers of the shop I would like to congratulate Mrs Marie Hodges on receiving her 10 year certificate.

Marie started volunteering with the Trust Shop back in the days of Manuka and was one of the band of volunteers who moved to the new location at Old Parliament House. She then had a couple of years off but returned to the shop six years ago. Marie indicated that she would not be available this year due to other commitments and we will miss her. Marie is still on the emergency roster so she has not given us up completely. We all wish her well.

With the first anniversary of the Rose Gardens behind us we are in the process of producing merchandise representing the Gardens. There are only a few at present but is continually increasing.

*The Shop is looking for volunteers to fill a couple of vacancies during the week and weekends. If any member would like to meet new people, be part of a friendly successful team (family), and who has four hours a fortnight to spare please contact me on 6273 4744.*

Dianne Dowling

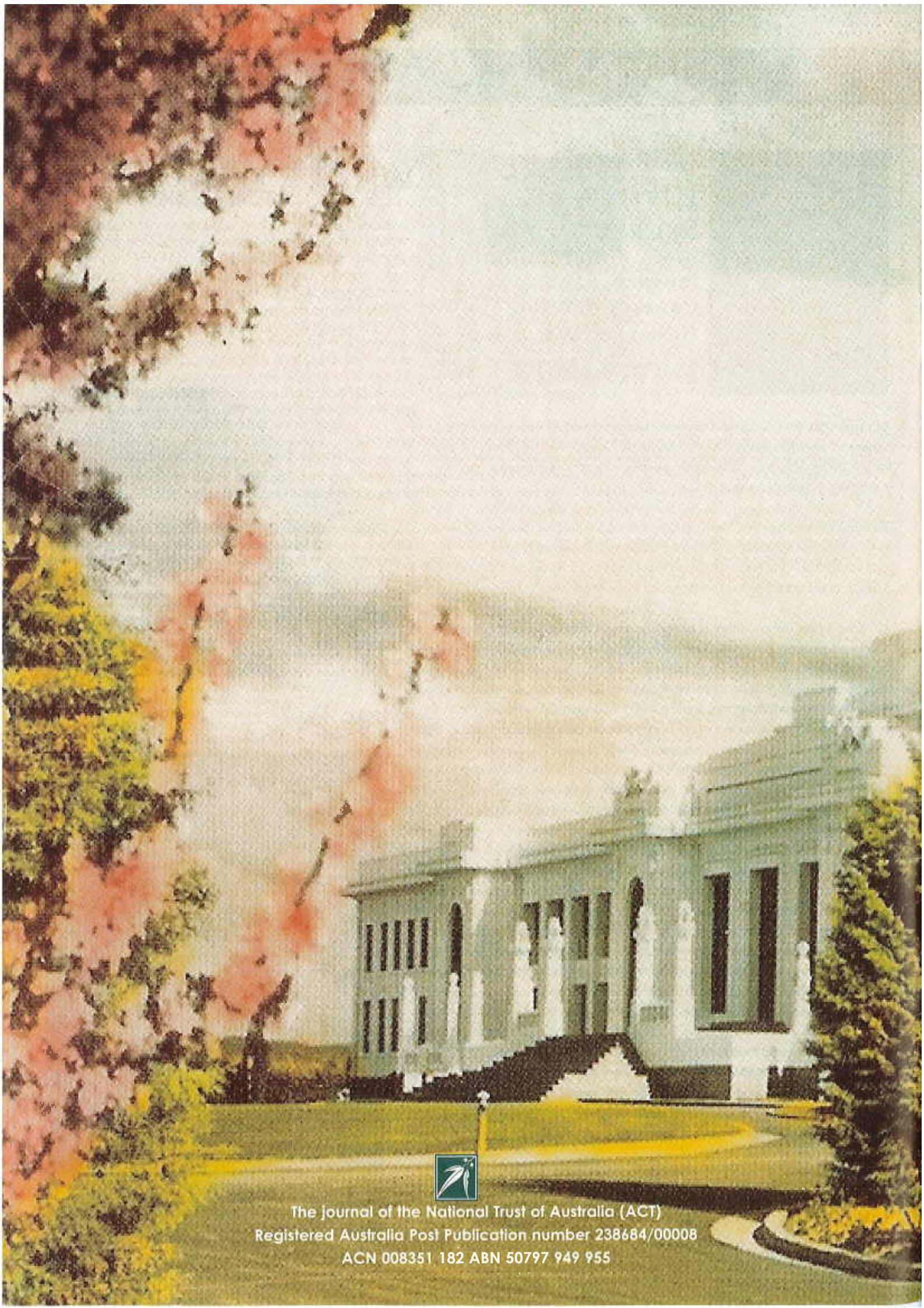
*Anzac Park*

Have an overflow of visitors to Canberra?  
Try ANZAC PARK homestay,  
a leisurely stroll from the lakes foreshore & moments to The War Memorial.  
Beautifully appointed ensuite bedrooms with courtyards & your own private entrance,  
ample off-street parking  
pets welcome,  
delicious continental breakfast.  
Ideal for mature travellers who are visiting for a few days  
Relaxed personal service  
**Anzac Park Homestay**  
**61614143**  
108 Anzac Park  
Campbell ACT 2612



NATIONAL TRUST  
corporate member





The Journal of the National Trust of Australia (ACT)  
Registered Australia Post Publication number 238684/00008  
ACN 008351 182 ABN 50797 949 955