

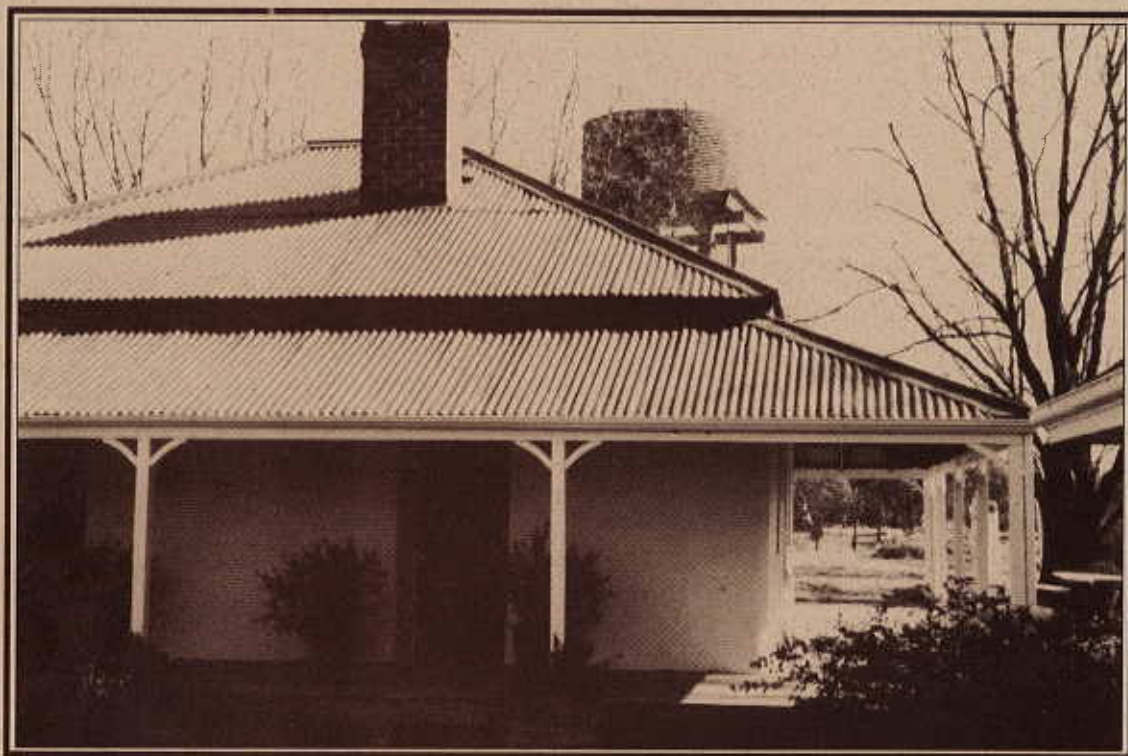


# TRUST NEWS

The National Trust of Australia (ACT)

November 1997

**File Copy  
Do Not Remove**



*Trust Classified cottage at the rear of Tuggeranong Homestead*

PO Box 3173 Manuka ACT 2603

ISSN 0727-9019

Registered by Australia Post Publication No. 238684/00008



## Trust News

Published by  
The National Trust of Australia (ACT)  
2 Light Street  
GRIFFITH ACT 2603  
PO Box 3173  
MANUKA ACT 2603

**Tel(02)6239 5222 Fax(02)6239 5333**

**Email mhodgkin@pcug.org.au**

### **President**

Prof Ken Taylor

### **Executive Officer**

Mr Michael Hodgkin

### **Editor**

Ms Robyn Trezise

### **Frequency**

Issued February, May, August and November

### **Printers**

Elect Printing  
112 Wollongong Street, Fyshwick,  
ACT, 2609

### **Layout and Design**

Ingenious Software Ph: (02) 6258 4858

### **Copy Deadline**

The closing date for copy is the second last Friday of the month prior to publication.

### **Advertising**

Enquiries should be directed to the National Trust Office on (02) 6239 5222  
Advertising rates:

1/8 page \$20      1/4 page \$35

1/2 page \$65      1 page \$125

Discounts apply to non-profit community groups and to Corporate Members of the Trust.

Advertisements should be laser print quality or in bromide, ready to print format. We can draw up simple advertisements for you (at \$20.00/hour) or can arrange a professionally designed advertisement (at \$40.00/hour).

If you provide the material, we will incorporate A4 or smaller inserts (up to 15 grams) for \$85.00 per edition.

The National Trust of Australia (ACT) reserves the right to decline any advertisement.

### **Annual Subscription Rates (Financial Year)**

Household membership \$55.00;

Single membership \$38.00;

Pensioner/student membership \$25.00;

Senior card single membership \$33.00;

Senior card household membership \$45.00;

Affiliated organisations membership \$55.00

Corporate membership \$150.00.

### **Life memberships also available,**

Single life membership \$360.00;

Dual life membership \$450.00

Benefactor \$1000.00.

## CONTENTS

### GENERAL INTEREST

In This Issue .....	3
Christmas Shopping Bag Promotion .....	3
Graduate Diploma in History .....	3
Local Cycle Racing Between the Wars .....	4
A.C.T. Elections - Candidates' Views on Heritage ..	6
Conservation Directory .....	7
What is the Australian Bush Heritage Fund? .....	8
Be a Weedbuster! .....	9
Fremantle Prison: a world class heritage site .....	10
Short Cuts .....	11
Coming Attractions .....	12
Recent Walks and Tours .....	13

### MEMBER NEWS

News from the National Office - the Australian Council of National Trusts .....	14
1997 Membership Survey .....	15
Help Wanted - Your Trust Needs You! .....	15
Interstate National Trust Properties .....	16
White Garden Appeal Decision .....	17
Acton Hotel .....	17
Recent Trust Classifications .....	18
Trees in the A.C.T. 7 .....	18
New Members .....	19
Library News .....	20
Obituaries .....	20
Household Hints, Remedies & Recipes .....	21
Interwar Housing Seminar .....	21
Trust Office Services .....	22
Trust Comments on the National Museum plan for Acton Peninsula .....	23
What's on, In and Around Canberra .....	24
What's On - Trust Activities .....	24
Children's Week Picnic .....	24



## IN THIS ISSUE . . .

Hot on the heels of the 1996/97 Annual Report comes the November issue, with barely time to draw breath. I hope you enjoyed getting the bonus of a few articles with your annual report and notification of a few events that would otherwise have remained unadvertised.

This issue features an article on another local social club which grew up in the early days of Canberra—The Canberra Cycling Club. Thanks are due to Ann Gugler again for supplying this piece.

Early next year ACT voters go to the polls and the Trust thought members may appreciate the chance to know what candidates think about local heritage matters. Each party and independent candidate was approached to send us a summary of their views. Those which arrived by our deadline have been reproduced here for your edification.

If you were wondering what to do with yourself over the summer break, perhaps you could do the environment a favour by checking for and eliminating noxious weeds from your backyard or other property. There has been a concerted effort by many dedicated volunteers to eliminate several varieties of harmful weeds from our region, highlighted by Weedbusters Week in October.

At the time of going to press the Christmas Cocktail Party looks in doubt due to the closure of the road for the F&I Rally that weekend. We are trying to see if a way out of this dilemma can be found and an insert in this newsletter will notify you of the result of our efforts.

The Australian Bush Heritage Fund has supplied an article explaining what the Fund does; Judith Baskin reports on the outcome of the Administrative Appeals Tribunal hearing concerning the delisting of the Sir Harold and Lady White Garden in Red Hill; Garth Setchell has supplied more tantalising photographs to tempt you to book on one of his famous walks or tours and there is much, much more. Start reading.

Robyn Trezise

## CHRISTMAS SHOPPING BAG PROMOTION

Please keep an eye out for the shopping bags being sold at all shopping centres run by Jones Lang Wootton in the ACT - Erindale Centre, Kaleen Village and Lanyon Marketplace.

The National Trust (ACT) joined with Guides Australia ACT, The Chronicle, 1053 2CA, Jones Lang Wootton and Bainz Designz to make these bags available to help raise funds for disabled children. At the same time, using such bags will lessen the number of disposable plastic bags at large in the community. Support this project - bags are a mere \$2 each.



## WANT A GRADUATE DIPLOMA IN LOCAL & APPLIED HISTORY ?

Each year the University of New England runs external history/heritage conservation courses for both graduates and undergraduates. The cut-off date for undergraduate registrations has already passed, but for graduates wanting to undertake courses in 1998, registrations must be received by 30 November 1997. If interested, phone Helen McKinnon of the Faculty of Arts on (067) 73 3020.

### One Stop Christmas Shopping!

When you think Christmas shopping this year, think of the Trust shop at Old Parliament House, where Jill and Paula are on hand to help you select some unusual, quality gifts for your loved ones.

The Trust shop looks like Aladdin's cave at the moment, filled with exciting treasures such as:

- Australian made jewellery - some marvellous Celtic designs, opals, mother of pearl and garnets
  - Australian made China including Canberra's very own bluebell design and reproductions of the china formerly used in the old House's Dining Room.
  - A range of macadamia nut shortbread biscuits and macadamia nut, coffee and Irish cream liqueur chocolates

There are also many practical gifts you may choose such as:

- Christmas cards (including some by local artists)
- A range of National Trust Australian verse tea towels
- National Trust gift vouchers or gift membership vouchers
- National Trust 1998 diaries and calendars

REMEMBER, THE SHOP IS OPEN AT OLD PARLIAMENT HOUSE 9-4 DAILY.  
FOR FURTHER INFORMATION CALL JILL OR PAULA ON 6273 4744.



## IN THIS ISSUE . . .

Hot on the heels of the 1996/97 Annual Report comes the November issue, with barely time to draw breath. I hope you enjoyed getting the bonus of a few articles with your annual report and notification of a few events that would otherwise have remained unadvertised.

This issue features an article on another local social club which grew up in the early days of Canberra—The Canberra Cycling Club. Thanks are due to Ann Gugler again for supplying this piece.

Early next year ACT voters go to the polls and the Trust thought members may appreciate the chance to know what candidates think about local heritage matters. Each party and independent candidate was approached to send us a summary of their views. Those which arrived by our deadline have been reproduced here for your edification.

If you were wondering what to do with yourself over the summer break, perhaps you could do the environment a favour by checking for and eliminating noxious weeds from your backyard or other property. There has been a concerted effort by many dedicated volunteers to eliminate several varieties of harmful weeds from our region, highlighted by Weedbusters Week in October.

At the time of going to press the Christmas Cocktail Party looks in doubt due to the closure of the road for the FAI Rally that weekend. We are trying to see if a way out of this dilemma can be found and an insert in this newsletter will notify you of the result of our efforts.

The Australian Bush Heritage Fund has supplied an article explaining what the Fund does; Judith Baskin reports on the outcome of the Administrative Appeals Tribunal hearing concerning the delisting of the Sir Harold and Lady White Garden in Red Hill; Garth Setchell has supplied more tantalising photographs to tempt you to book on one of his famous walks or tours and there is much, much more. Start reading.

Robyn Trezise

## CHRISTMAS SHOPPING BAG PROMOTION

Please keep an eye out for the shopping bags being sold at all shopping centres run by Jones Lang Wootton in the ACT - Erindale Centre, Kaleen Village and Lanyon Marketplace.

The National Trust (ACT) joined with Guides Australia ACT, The Chronicle, 1053 2CA, Jones Lang Wootton and Bainz Designz to make these bags available to help raise funds for disabled children. At the same time, using such bags will lessen the number of disposable plastic bags at large in the community. Support this project - bags are a mere \$2 each.



## WANT A GRADUATE DIPLOMA IN LOCAL & APPLIED HISTORY ?

Each year the University of New England runs external history/heritage conservation courses for both graduates and undergraduates. The cut-off date for undergraduate registrations has already passed, but for graduates wanting to undertake courses in 1998, registrations must be received by 30 November 1997. If interested, phone Helen McKinnon of the Faculty of Arts on (067) 73 3020.

### One Stop Christmas Shopping!

When you think Christmas shopping this year, think of the Trust shop at Old Parliament House, where Jill and Paula are on hand to help you select some unusual, quality gifts for your loved ones.

The Trust shop looks like Aladdin's cave at the moment, filled with exciting treasures such as:

- Australian made jewellery - some marvellous Celtic designs, opals, mother of pearl and garnets
- Australian made China including Canberra's very own bluebell design and reproductions of the china formerly used in the old House's Dining Room.
- A range of macadamia nut shortbread biscuits and macadamia nut, coffee and Irish cream liqueur chocolates

There are also many practical gifts you may choose such as:

- Christmas cards (including some by local artists)
- A range of National Trust Australian verse tea towels
- National Trust gift vouchers or gift membership vouchers
- National Trust 1998 diaries and calendars

REMEMBER, THE SHOP IS OPEN AT OLD PARLIAMENT HOUSE 9-4 DAILY.  
FOR FURTHER INFORMATION CALL JILL OR PAULA ON 6273 4744.



## LOCAL CYCLE RACING BETWEEN THE WARS

On Monday, 15th November, 1926 *The Canberra Cycling Club* was formed, and six days later held its first race. The race commenced at 2.30 pm outside the Hotel Canberra and finished somewhere in the city area. With the exception of the short stretch of concrete on the road in front of the Hotel the surfaces over which the riders raced were the wooden planks of the Commonwealth bridges and the gravel of the city streets.

Jacob Tootell, Hon Sec of the Outdoor Committee of the Social Service Association (1925-1929) was the man responsible for the club's establishment. Very little is known about Jacob other than that he came to Canberra in the early post World War One years, lived at Molonglo, then Westlake, leaving in 1929—presumably to follow the work trail. His trade was that of engine driver and his sporting interest, cycle racing.

The Social Service Association, under whose auspices the club was founded, was the brain child of the First Commissioner, John Butters. It replaced the numerous settlement and camp Progress Associations and brought the affairs of welfare under the influence and control of a funded central body. Joe Honeysett, Hon Secretary of the Association, coordinated the numerous elected committees (all male) which included - Indoor Recreation, Outdoor Recreation, Education, Library and Women & Children's Welfare. The Association produced a monthly magazine, *The Canberra Community News* (1925-1927), in which regular reports were published including the activities of the *Canberra Cycle Club*. For example the report in the issue dated April 11, 1927 in part reads:

*The Club is anxious to put on a carnival during the Royal visit, and are making application for a grass track at the Manuka Oval, when it is hoped to have some of the leading riders from Sydney here. The carnival, if held, will be a twenty pound programme and a Championship sash for the Federal Territory. Many new members are joining up now that this club is properly formed, and many good riders are amongst them. It is very gratifying to the founders to see the interest which local business people are taking in the club...*

The planned Carnival did not take place nor was a grass track constructed and one can but wonder if the powers that be considered the sport important enough to warrant the expense of providing specialist facilities. Indeed the fact that the first race took place on a Sunday tends to give some credence to this supposition. Sunday was the day on which John Butters banned organised sport.

His decision angered many committee members who were supporters of the forbidden Sabbath sports—in particular football and cricket—with the result that John Butters felt it necessary to defend his decision. This defence was published in the December 11, 1925 issue of *The Canberra Community News*. Part of the lengthy document reads as follows:

*I noticed that your committee passed a resolution at its last meeting to the following effect:*

*'That this meeting protests against the attitude adopted by the Commission with regard to Sunday sports as it seriously hampers the activities of this Committee and mitigates against the objectives and principles of the welfare movement.'*

*I am quite certain that your Committee is under a*

*misapprehension about this matter and a little of this misapprehension may be indicated in the heading of your letter which is certainly not in accordance with the fact.*

He went on to say . . .

*I should like you to assure your Committee that the Commission is not 'adopting an attitude'.*

*It has come to the decision after very careful thought and deliberations that it is in the interests of Canberra and its present and future residents that ORGANISED sports, test matches which draw a crowd engender excitement and turn Sunday from a day of worship, quiet meditation, recreation or amusement, in accordance with taste, into a day which as a matter of fact might be a Saturday...*

By 1930, following the demise of the Social Service Association and the departure from the Territory of many men, *The Canberra Cycling Club* was no more. This was the year that Ally Nish, former architect employed by the Federal Capital Commission, opened the first sports store in Canberra. He, like many ex-commonwealth employees, was (to use the current jargon) *let go* as part of the process of *downsizing* as the grip of the Great Depression slowed building in the Territory to an almost standstill.

In October 1992, Arthur Jones, a keen ex-racing cyclist and author of numerous articles on cycle racing in the Territory wrote about Ally Nish and his importance to cycle racing:

*Briefly, Ally Nish was a leading light in the development of cycling in Canberra, having opened a sports store in Northbourne Avenue in 1930. I am told that when he opened the doors for the first time, his stock consisted of one cricket bat, one tennis racket, a few small items of sporting equipment, but something that nobody would have been without in those days—cigarettes.*

*There was not a bike to be seen, but he soon began to stock them, and indeed, hire them out for the princely sum of a shilling (ten cents) a week. To buy a bike you needed all of eight pounds ten shillings, but that was only the standard basic model. There were no gears, the handle bars were flat, and a back-peddalling brake would set you back another two pounds. A racing bike with dropped bars, Dunlop Road Racing tyres (but still no gears) would have cost you twenty pounds.*

*If you are wondering how they managed to climb hills, they had two cogs on the rear wheel, and if the course was extra hilly or the wind blowing a gale, you chose the cog which gave you the lowest gear—and maybe changed over a wheel at half way if the wind was favourable on the return journey.*

*So Ally Nish became the proprietor of a shop that specialised more and more in bicycles, reflecting that the bike then was the most efficient mode of transport and probably still is.*

Racing soon became popular, not only with keen riders but also with the general public, and meetings at Queanbeyan attracted up to 4,000 people, many of whom came along to hand over their week's wages to the bookmaker who conducted a thriving business, and actually put up cash prizes as well.



The meetings at Queanbeyan referred to by Arthur Jones were run by *The Queanbeyan Cycle & Athletics Club* which was founded in the mid 1930s. Its members—men and women—came from both Canberra and Queanbeyan and raced in the appropriate divisions of Juvenile, Junior (under 18), Seniors and Ladies.

Club racing took place all year round. During the summer months the venue was the Queanbeyan Show Ground where races commenced every Sunday at 8.30 in the morning and continued until all heats and finals were completed sometime in the early afternoon. The end of season Carnival was held on a Wednesday night. Even so, it attracted riders from as far afield as Goulburn, Cooma, Bungendore, Braidwood, Cootamundra and Bombala. The successful racers could expect to win amounts from around 10/- to £70—handsome sums when one considers that those fortunate enough to have work earned a basic wage of around £5 per week.

During winter the races moved to the roads—most of which were like the track—gravel. Distances ranged from five to fifty two miles. Some races started in the main street of Queanbeyan and continued out along the Uriarra Road to Brodie's Garage (now the Mobil in Wentworth Avenue) and return. The garage was known as the *six mile* hence one tour there and back was twelve miles—repeated it became the twenty four and thirty six miles races.

The Queanbeyan Club also travelled to meets in other towns and in 1939 a team consisting of Jack Sands, Jimmy Brill, Bert Robinson, Ron O'Rourke, Ron Pepper and Nick Koorey set off to Goulburn to race for the *Tully Cup*.

The 1939 Club Champion, Nobby Robertson was not included in the team because he had a fractured skull—the result of an earlier racing accident.

The Queanbeyan team returned triumphant with the cup which had been donated to the Goulburn Team by their local MP. It was the intention to hold the race annually but by the following year the Queanbeyan Club had disbanded as men went off to war and was not to reform until 1945. Nick Koorey and Ron Pepper never raced again. They were killed in battle. The cup lay forgotten for over a decade and when found no one remembered it or the circumstances under which it was won. Eventually it was reused as a club trophy and presented to a new club champion, Merv Britton, in whose possession the cup has remained.

A few members of the *Queanbeyan Cycle & Athletics Club* still live in the district and from their reminiscences and memorabilia the shadows of the past live. One favoured topic is the bike which served during the week as a mode of transport and on race days, with a change of wheels from heavy duty to light weight, as a racing cycle.

One bike was different to the others. It belongs—for it still exists—to Nobby Robertson. It was built for racing and was constructed from light weight metal tubing to the specifications of another club member—'Brickie' Warren. It is a precursor of contemporary cycle design which varies the basic two wheeler to suit the specific requirements of a wide range of cycle sports.

*Ann Gugler*



*Albert McInnes with his racing bike and Bert Robinson (one of the Tully Cup team)—photo taken 1997*



---

## ACT ELECTIONS—CANDIDATES' VIEWS ON HERITAGE

In the lead up to the ACT elections due to be held early next year, the Trust has asked that local political parties and independents share their views on heritage matters for publication to members. Not all of those approached replied within the time given but the comments of those who did appear below:

### LABOR PARTY—BILL WOOD (Opposition spokesman on Heritage)

Labor is committed to identifying and conserving heritage places, objects and traditions and in communicating significance for the benefit of today's generation and future generations.

Labor will work to ensure that everyone in the ACT is aware of, cares for and enjoys their heritage and is proud to communicate that to others. This respect is not simply an acknowledgment of the past, but also a necessary focus as we mould our future.

Labor's record in government demonstrated its commitment. While always needing refinement, the ACT's legislation provides a framework for the protection of our heritage. Labor initiated and funded the soon-to-be-completed gallery/museum. Labor also provided funds for an Aboriginal Heritage Centre. Labor took steps to protect threatened ecosystems and habitats.

Amongst other considerations, Labor in Government will:

#### *Cultural Heritage —*

- Provide the ACT Heritage Council with a capacity for research
- Undertake a comprehensive program to map and record the history and traditions of various groups, including aboriginal and multicultural. Labor's program will provide professional assistance to groups to record their traditions and financial support to expand the collection of social histories, including publishing assistance
- Develop a register of the collection of the ACT's written heritage, contained in various institutions
- Maintain the commitment and financial contribution to the Aboriginal Gallery of Australia and the ACT Aboriginal Heritage Centre
- Ensure adequate staffing for the ACT gallery/museum, especially to conduct education programs
- Set aside the Forrest Fire Station as a Heritage House.

#### *Built Heritage —*

- Undertake further studies of early ACT residential, public and commercial architecture to promote early styles and to encourage greater thought for a Canberra identity in future construction
- Improve mechanisms for the protection from damage to sites on the Heritage and Interim Heritage Registers
- Provide the necessary financial support for maintenance work on identified sites such as

Tuggeranong Homestead

#### *Natural Heritage —*

- Undertake a mapping program to complete the record of ecosystems and habitats needing protection
- Decline to support a road through O'Connor Ridge
- Legislate to protect significant trees.

### ACT GREENS

The ACT Greens have a strong interest in the protection of the ACT's cultural and natural heritage. We believe that the preservation of our natural and cultural heritage is a gift that we can pass on to future generations—the history of a community is written in the places in which they have lived. The Greens are proud of Canberra's 'bush capital' heritage and will do all we can to preserve it.

The ACT Greens have worked hard in the Assembly to protect both the natural and the built environment. Regarding the natural environment, we have consistently pressured the Government to protect remnant areas of native grassland and woodland in the ACT, to increase resources allocated to nature conservation work, and to control the spread of weeds into the nature reserves. We are also preparing legislation to protect significant trees on private land, similar to tree protection orders in other States.

The Greens have also taken a strong stand in opposing inappropriate urban development that would degrade Canberra's urban environment and have called for a strategic plan to be developed to guide Canberra's future development. We have been particularly vocal about the unfettered urban consolidation that has occurred in North and South Canberra in recent years that has taken little regard of the heritage value of the existing houses and streetscapes. We put forward a motion in the Assembly in 1996 calling on the Government to abolish the B1 planning zone in North Canberra which allowed urban consolidation in this area and to begin a process of local area planning to determine the most appropriate location and form of medium density housing.

We have also been the only Party to come out clearly against the proposal to develop the Manuka carpark into a shopping mall, because of its detrimental effect on the unique village character of the existing Manuka shops and on other centres. We put up a motion in the Assembly to stop this process when expressions of interest in the development were first called and urged the Government to undertake studies on the most appropriate use of this site. The Greens also opposed the Government's changes to the planning legislation in late 1996 which abolished the ACT Planning Authority, reduced betterment fees paid by developers and weakened third party appeal rights. Unfortunately our efforts to protect the urban environment have been regularly blocked by Liberal and Labor voting together to defeat our motions.

If re-elected the Greens will push for a review of the ACT's planning legislation to ensure that best practice



environmental design is implemented, and that designated heritage buildings, areas and streetscapes are protected from redevelopment that would degrade their heritage value. We will also work to ensure that areas of natural heritage and significant trees outside of the existing reserve system are better protected.

I believe the Greens have been a crucial presence in the Legislative Assembly since 1995 and will be even more important in the next Assembly. We have consistently brought concerns about the degradation of the natural and built environment to the attention of other members of the Assembly by amending legislation, by introducing our own legislation and by the use of motions. The Greens are needed in the Assembly to ensure that development in Canberra balances the need for economic activity and job creation with the protection of our natural and cultural heritage.

### **INDEPENDENT—MICHAEL MOORE**

In principle, my policies are designed to ensure that we have a healthier society. I believe that heritage helps us to understand our sense of self and as such assists in maintaining a healthy society. What better heritage to pass on to future generations.

Since being elected to the Assembly in 1989 I have worked very hard to:

- attain the highest levels of environmental protection and nature conservation. Through this we are fair to future generations and retain our environment as their heritage. Respect for the human environment fosters respect for the natural environment.
- protect the natural, built and cultural environment, including Canberra's unique planning and leasehold system
- preserve the ACT's heritage, including sites of significance to Aboriginal people
- foster public participation in planning and decision making that should be enshrined in a system of open government. Economic development should be based on ecologically and socially sustainable practices.
- ensure that public open space is protected from alienation or diversion to private interests
- ensure that native animals and plants and their habitats are protected
- promote water conservation and water quality
- eliminate land management practices which result in land degradation
- preserve and protect the ACT's remaining native grassland and woodlands from destruction and to preserve the ACT's natural and built heritage.

I will commit myself to this philosophy.



## **CONSERVATION DIRECTORY**

Thinking of doing some renovations to your home but wanting to ensure they're done sympathetically? Perhaps you're hoping to get a tax concession for work done on a heritage listed building. If so, having the work done by someone skilled in dealing with the challenges of heritage properties can make all the difference.

The Trust has several professionals with a wide range of skills listed in the first edition of our "Directory of Conservation Trades, Suppliers and Professionals" but is keen to extend the list of professionals on our books. Several local businesses have put their names forward to be included in the Trust's first directory—architects, carpenters, upholsterers, masons, painters and plasterers, and if you don't know where to start, a heritage consultant may be able to help.

The list is not complete—there are no engineers, blacksmiths, conservators, landscape gardeners or wheelwrights on our books! Our aim is to include as many and varied skills as possible. There may be other professionals you know of with experience in repair and maintenance of heritage buildings who are not listed. If so, please encourage them to consider putting their names forward to make our directory as comprehensive as possible.

If employing these firms for work around your own home, please make sure they know that you heard about their skills and experience through their participation in the National Trust (ACT)'s Conservation Directory.

The Directory may be purchased from the Trust office for \$20.

## **OUT NOW! 1998 Heritage Australia Calendar**



*Featuring  
12 National Trust Properties*

RRP \$14.95

*To order your Calendar contact Margaret at  
The Australian Council of National Trusts*

**Ph: (02) 6247 6766**



---

## WHAT IS THE AUSTRALIAN BUSH HERITAGE FUND?

The Australian Bush Heritage Fund is gaining an enviable reputation throughout Australia for its contribution to nature conservation on private land. As many important natural areas in Australia are privately owned, Bush Heritage specifically aims to acquire private land of outstanding significance and to manage it for the benefit of all Australians.

The Fund, which was formed in 1990 when Bob Brown initiated the purchase of two blocks in Tasmania, is about to announce the purchase of its seventh reserve across Australia: all purchases having been made possible by donations from the general public.

The Bush Heritage Fund's latest acquisition is 120 ha of coastal heathland and eucalyptus woodland on Tasmania's east coast. The reserve near the Freycinet Peninsula protects coastal sand dune vegetation and heathlands which, on the east coast of Tasmania, have been extensively cleared for agriculture and residential purposes. It also protects and complements the adjacent saltwater lagoon nature reserve, a haven for waterbirds, previously threatened by unsympathetic development.

This latest Tasmanian acquisition follows the purchase late last year of 333 ha of Wandoo woodland in part of Western Australia's wheat belt area known as the Kojonup Reserve, with wildflowers, mallee and ephemeral wetlands. Less than 1.5% of the wheat belt area is on conservation reserves and Wandoo woodland is

important wildlife habitat. Eucalyptus Wandoo is the only tree species in the region which develops hollows, providing homes for many birds and mammals. Beneath the trees there is an impressive array of wildflowers and orchids: most of the 200 or more plant species on the reserve being unique to W.A.

A very exciting purchase earlier this year was the lease of Erith Island, part of the Kent Group on Bass Strait. The purchase of this lease makes the island the first in Bass Strait to be managed for nature conservation. It is a 4 sq km granite island with remarkably high diversity of marine life and rich land flora.

In keeping with its national program of acquisition the ABHF is currently negotiating for the purchase of blocks of land in two states and is actively investigating purchases across Australia with a particular focus on the south east.

Bush Heritage is a non-profit organisation committed to the protection of the Australian bush, with other properties in northern Queensland and southern NSW. Its work is funded entirely by donations which are tax deductible. Donors receive a quarterly newsletter. **Doug Humann** has been appointed to the new position of Executive Director of the Fund and can be contacted on (03) 6223 2670, fax (03) 6223 2680 or post top GPO Box 101, Hobart 7001.

*Doug Humann*



Yate trees (*Eucalyptus occidentalis*) and seasonal wetlands at the Kojonup Reserve.



## BE A WEEDBUSTER!

You may be aware of the recent publicity associated with Weedbusters Week which was held last month. If not, the aim of Weedbusters Week was to heighten awareness of those plants which, for various reasons, need to be eliminated from our local landscape.

The promotional week is over, but it is never too late to begin your own eradication program if you find these plants on your property. They may have grown from seed spread by birds or the wind, or you may have planted these weeds unaware of the damage they can cause the local environment. The plants which were the focus of the 1997 campaign are:

- ❖ Montbretia (multiplies rapidly and chokes creeks and waterways),

- ❖ Scotch Broom (smothers all other plant life),
- ❖ Serrated tussock (prolific seeder, unpalatable to stock),
- ❖ Blue heliotrope (deep rooted, invasive and poisonous to livestock), and
- ❖ the Rhus tree (causes severe allergic reaction and health deterioration).

Please check your property for any of these plants and take immediate action to eradicate any specimens found. Particular care will need to be taken when dealing with the Rhus tree. Your local nursery should be able to help you with identification of these plants and offer advice on how to safely handle them, both before and after weeding.



**Blue heliotrope**  
(*Heliotropium amplexicaule*)



**Serrated tussock**  
(*Nassella trichotoma*)



**Rhus tree**  
(*Toxicodendron succadaneum*)



**Scotch broom**  
(*Cytisus scoparius*)



**Montbretia**  
(*Crococsmia x crocosmiiflora*)

*Valuations—Insurance—Probate*

**Michael C. Jones (incorporating Manuka Antiques)**



**Tel: (02) 6288 5429**



*Specialist valuers of:*  
*Furniture, Ceramics, Silver, Paintings & Objets d'Art*

*A member of the Antique Dealers Association of Australia*



---

## FREMANTLE PRISON: A WORLD CLASS HERITAGE SITE

The Federal Government is currently considering Fremantle Prison, in conjunction with several other key convict sites including Port Arthur (Tasmania), Kingston (Norfolk Island), and Hyde Park Barracks (Sydney), for nomination to the United Nations Educational Scientific and Cultural Organisation (UNESCO) in Paris for World Heritage listing. Fremantle Prison would be part of a serial listing of convict places which together would tell the story of convict transportation to Australia.

Inclusion on the World Heritage List is international recognition that certain cultural and natural places are of such outstanding universal value that they ought to be protected for the benefit of all people.

It would be a considerable achievement for the Prison's architectural and management structures to meet UNESCO's strict guidelines, particularly with regard to the requirement of global relevance and community access. There are currently only 11 World Heritage sites in Australia, all of them natural places.

The path to nomination has been a lengthy one for Fremantle Prison as the final places have been selected from a long list reflecting Australia's rich convict endowment. It is interesting that the formal recognition process should be taking place at a time of considerable fascination—and even romanticism—in Australia about the country's convict history. In the case of Western

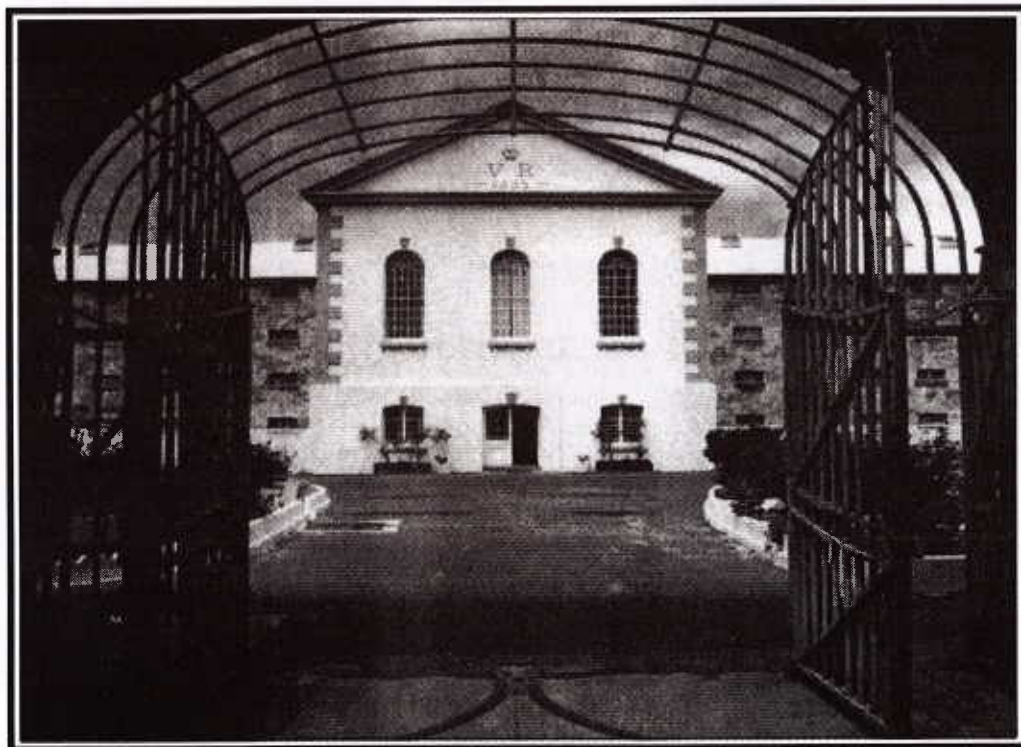
Australia, the first convicts did not arrive until 1850 and transportation continued until 1868.

The Prison's architectural importance was recognised by the National Trust in the late 1960s when several of the buildings in the precinct were Classified. Fremantle Prison is also on the Register of the National Estate, as well as state and local government heritage registers.

Fremantle Prison is owned by the West Australian Government and is vested in the Minister for Works, Mike Board, who is advised on policy by the Fremantle Prison Trust. The day to day management of the site is carried out by the Department of Contract and Management Services (CAMS).

An important requirement for World Heritage listing is uniqueness. Fremantle Prison is unique in many ways. It remains the longest and tallest cell range in Australia and, apart from some minor changes and several additions, it remains very much as it was when built by convicts in the 1850s. When it was decommissioned in 1991, it was the only convict prison in Australia still being used for its intended purpose, to hold prisoners. Also, unlike many convict relics, it is still intact.

As early as 1983 the Western Australian Government had recognised the significance of Fremantle Prison and set the wheels in motion to have it recognised as a



*The Anglican Chapel dominates the Main Cell Block of the Fremantle Prison built between 1850 and 1860 by convicts.*

*Photo courtesy Michael Lewi*



heritage place. Over the intervening years extensive archival, archaeological and site research has been undertaken to develop a comprehensive understanding of the site. An expert on colonial prisons, James Semple Kerr, was commissioned to prepare a conservation policy for the site and this remains a guiding document for the Fremantle Prison Trust.

A number of research, conservation, and interpretation programs are currently under way. These include work on limestone, the building material quarried from the site by convicts in the 1850s, which has been damaged by unsympathetic cement renders. Work will also start soon on the actual conservation of the elegant but problematic Anglican Chapel. A continuing survey of Prison art has been set in place. In the interpretation area, the cell reconstruction project carefully recreates differing conditions of cell life at six stages of change between the 1850s and 1991.

In an attempt to make the site as economically viable as possible and to breathe life into some of the twenty odd buildings in the precinct, a number of areas have been identified for compatible future uses. These buildings have been leased to education, accommodation and commercial interests. The tourist operation has also been leased to the Fremantle Prison Guardians who operate all tours and co-ordinate functions and school bookings.

For more details on the management of the Prison and its future uses please contact the Complex Manager, Beres Coley, on (08) 9335 9473, fax (08) 9430 6115 or Email [fremantleprison@cams.wa.gov.au](mailto:fremantleprison@cams.wa.gov.au) for more information. You can also visit on the web at <http://www.cams.wa.gov.au/freopris>.

## SHORT CUTS

### BRUMBY SITES RECOGNISED

It was recently announced that seven former brumby trap yards in Namadgi National Park have recently been placed on the ACT Heritage Places Register. In the September issue of the "NPA Bulletin" (Vol.34, No.3), Graham Wicks says the "brumby running is part of Australian folklore and bush culture, and the yards represent a tangible link with this historical and cultural theme."

These sites were nominated to the Register by the National Trust (ACT). The Citations were prepared for us by Matthew Higgins.

### MORE VULNERABLE WILDLIFE

Also reported by Graeme Wicks is news that five bird species and a species of grasshopper have been added to the threatened species list in the ACT. All classed as vulnerable, the new additions are the Regent Honeyeater, Superb Parrot, Swift Parrot, Hooded Robin, Brown Treecreeper and the Perunga Grasshopper.

From "NPA Bulletin" (Vol.34, No.3)

### WAITING FOR THE BIG ONE

Staff at Kemp House, Kerikeri, New Zealand have been on evacuation alert in preparation for expected floods eleven times in the past eighteen months. The New Zealand Historic Places Trust spends thousands every year monitoring water levels in the Kerikeri River and feels the area's problems relate to a road bridge downstream which dams up the water endangering Kemp House and the historically significant Stone Store. Talks with the local Council continue as the Trust tries to have a by-pass commenced and the trouble-making bridge removed.

Sherry Reynolds in "New Zealand Historic Places", No. 65, September 1997, p.5



## CUPPACUMBALONG CRAFT CENTRE

*extends to all our Trust supporters best wishes  
for the festive season and the year ahead.*

***On the banks of the Murrumbidgee River in a  
heritage garden setting you will find quality  
gifts by Australia's leading craftspeople.***

- Silk collages by Sydney designer Kathleen Berney  
opening Sunday 23 November

***Discounts to Trust members of 10% on all  
gifts on production of membership card.***



11am - 5pm Weds - Sun and public holidays

Closed Christmas Day

Naas Road, Tharwa

Tel. 6237 5116



---

## COMING ATTRACTIONS



*Alpine meadows*

*New Year in the Snowy*



*St John's Church, Stroud*

*Prospective Hunter tour*



# JUNIOR NATIONAL TRUST NEWS

NOVEMBER 1997

Compiled by Paola Giurgola

**HELLO YOUNG FRIENDS,**

Welcome to the second exciting issue of Junior Trust News regarding different places of historical significance in the A.C.T. that you will find fun and interesting to visit during your summer holidays. I hope you like my selection of places.

To further enhance your enjoyment of these wonderful places there will be a **Painting & Drawing Competition** : Draw a picture of one of the places mentioned below

--One prize awarded to Grade 1 through Grade 4 category

--One prize awarded to Grade 4 through Grade 9 category

Prizes are Gift Vouchers from the National Trust Shop

**RULES:** • On A4 paper only

• Can be in pencil, coloured pencil, ink, crayon, and/or coloured markers  
(no paints or watercolours)

• On the back print your grade, age, name, address, and telephone

Send your entries to P. O. Box 3173 Manuka ACT 2603

## PLACES TO SEE



### **Parliament House : Capital Hill (Open 9am-5pm daily)**

It was designed by Mitchell/Giurgola & Thorp Architects and was opened in May 1988. Parliament House contains over 4,000 rooms (e.g. a huge Foyer with large green columns intending to create the illusion one has entered a metaphorical forest, the Great Hall with the wonderful tapestry of Arthur Boyd, the Members Hall in the centre of the building representing the symbolic heart of the building, and two chambers - The Senate and The House of Representatives), wonderful interior gardens, and magnificent artwork and craft work. If you have the opportunity you should attend one of the sittings in the houses when Parliament is sitting. I myself found the debates very interesting. One enters via the magnificent forecourt which has in the centre inlaid in the ground a wonderful mosaic, designed by the Aboriginal artist Michael Tjakamarra Nelson, representing the meeting place through an impressive white Great Verandah portico. It pays tribute the tradition of the Australian verandah providing shade, shelter and a place for receiving and farewelling visitors. Outside one can walk up the hill between the two houses and find themselves on top of the centre of the building with the magnificent stainless steel triangular flag mast and flagpole raising high above. The flagpole raises 81m above Parliament House with a huge Australian flag fluttering at the top.



**Old Parliament House :** King George Terrace, Parkes (Open 9am-4pm daily)

It was designed by the government architect John Murdoch and was opened in May 1927. A magnificent white Art Deco building. It is now a museum showing the political history of Canberra prior to the existence of the present Parliament House. It has been restored very well. Also on the premises is the *National Trust Shop* selling a variety of interesting items.

**Mugga-Mugga :** Narrabundah Lane (off Mugga Lane); 1st Sunday of the month 1pm-5pm

One of Canberra's earliest historic farm sites on the outskirts of Canberra. It is historically important because it has not changed much in the past 150 years. On this rural property where horses still graze in the paddock is a cottage dating back to the 1840's. Also on the property is an environmental educational system with lots of valuable information.

**Calthorpes' House :** 24 Mugga Way, Red Hill (Open Sat.-Sun. 1.30pm-4.30pm)

An original home of the 1920's. It is now a museum.

Tours Tuesday, Wednesday, and Thursday 9.30am, 11.00am, 1.30pm, 3.00pm

*Numbers are limited so bookings preferred*

**Blundell's Cottage :** Wendouree Drive (off Constitution Ave.); Open Tues.-Sun.

10.00am-4.00pm

It is a historical building in the parliamentary triangle. Robert Campbell had it built in 1858 to house his head ploughman, William Ginn. After William Ginn resided there, the Blundell's occupied this farmhouse for fifty years.

**St. John 's Schoolhouse Museum :** Constitution Avenue, Reid

(Open Wed. 10am-12pm; Sat., Sun., & public holidays not Good Friday, 25 Dec. 2pm-4pm)

Next to St. John The Baptist Anglican Church. It is one of Canberra's earliest original stone rubble buildings built in the early 1840's. It comprises of a single schoolroom and five other rooms which were used as the home for the schoolmaster and his family. It operated as a school between 1847 and 1907.

**The Anglican Church of St. John The Baptist Church :** Constitution Avenue, Reid

It is one of our earliest churches dating back to 1845, before Canberra was founded. The original church was a symmetrical bluestone structure having central porches on either side. Additions include a sandstone tower and spire designed and built by the architect Edmund Blackett between 1865 and 1870, an asymmetrical spire added in 1878 and extensions to the nave. The main entrance to the churchyard is via a red mahogany wooden gate/structure having a shingled roof. It was designed by Ken Oliphant in 1932. Adjacent to the gate is a wall of local bluestone which came from the stable that once stood behind the schoolhouse.

**Manuka Pool :** Manuka Circle, Griffith

(Open Mon.-Fri. 6.30am-7.00pm; Sat.&Sun. 7.30am-7.30pm)

It is a white stucco Art Deco building of the 1930's. Back then it was the only swimming pool for 200 miles or 322 kilometres. It is a great place to go on hot summer days to refresh yourself and meet your friends.

**High Court of Australia :** Parkes Place, Parkes (Open 9am-4pm daily)

It was designed by Edwards, Madigan, Torquillo and Briggs in the mid 1970's. This building plays an important role in our judicial system with its three wonderful courtrooms. The ceremonial forecourt ramp with a cascading stepped fountain by Bob Woodward leads to the dramatic central hall where one can experience the vast spaciousness of the interior. Through out the building one notices beautiful workmanship of Australian timber.

**Yarralumla Woolshed :** Cotter Road, Yarralumla

It was constructed by Robert Campbell in 1904. It was used as a woolshed until the late 1960's.

Today it is used for various events like bush dances. It is an excellent example of the traditional large corrugated iron woolshed. This structure is seen as a powerful form in a rural landscape.



**NATIONAL TRUST OF AUSTRALIA (ACT)**  
**WALKS AND TOURS PROGRAM**

**NEW YEAR IN THE SNOWY** - Sunday 28 December 1997 to Friday 2 January 1998

In association with Adventure Wildlife and Park Treks, we are offering places on a 6-day fully accommodated tour by luxury minicoach to the Snowy Mountains area over New Year. You will visit Wee Jasper, Tumut, Yarrangobilly Caves, historic Coolamine Homestead, the Snowy Scheme, Thredbo, Charlottes Pass, Captains Flat, Braidwood and much more. This is a great time to view the alpine flowers and there will even be time for you to strike out for the summit of Kosciuszko - unless you wish to relax. A special New Year's Eve dinner is included.

Although the Trust will receive a commission on bookings, you will pay the same as other participants from Sydney. Our price includes connection with the tour at Yass and return to Canberra from Goulburn. Arrangements will depend upon numbers. Conditions apply. Travel insurance desirable.

**BOOKINGS CLOSE & PAYMENT IN FULL REQUIRED BY 1 DECEMBER.**

**MURRAMARANG AND BURREWARRA** - Saturday 21 and Sunday 22 February 1998

Our first walking event for 1998 takes advantage of the near South Coast when waters are warmest. Cabin accommodation has been booked at Burrawang Coastal Club on Saturday night (Friday night also available - no meals included) or you may arrange your own accommodation. The Saturday walk will involve a car shuttle commencing from Pebbly Beach at about 10.00am. We will walk from Pretty Beach back to Pebbly Beach via Durras Mountain (approximately 4 hours involving a 300m climb). In the afternoon, we may also explore the aboriginal middens at Murramarang Point, before testing the waters (and/or our customary champagne and savouries). There will be a BYO barbecue at Burrawang on Saturday night for all who wish to participate. On the Sunday morning, we will explore the many short tracks around Guerilla Bay and Burrewarra Point. The afternoon is free. You may swim or return via the scenic Araluen Valley.

**BOOKINGS CLOSE & PAYMENT IN FULL REQUIRED BY 6 FEBRUARY.**

**VIETNAM** - Tuesday 3 March to Wednesday 18 March 1998

It is now possible to report that Garth Setchell and 9 other intrepid travellers have safely returned from the recent tour to Vietnam. Not for the faint hearted, Vietnam is nonetheless a most interesting and exciting destination, with very friendly people, wonderful food, good hotels and transportation and a surprisingly rich cultural history. Whilst still a communist country, Vietnam has totally embraced free enterprise and foreign investment and the nation is leaping into the 21st century with great energy and optimism. In a few year's time, it will certainly have lost much of its current novelty and uniqueness.

A second chance to visit Vietnam exists in March 1998. This identical tour will be led by travel agent Ross Goddard in person, subject to a minimum of 8 bookings (maximum 12). The all-inclusive tour cost ex Canberra (except for some meals, insurance, visas, etc) will be \$3599pp twin share or \$4299pp sgl. A special briefing for those potentially interested in this tour will be held at 7.45pm on Tuesday 16 December. Garth Setchell will show slides taken on the October tour. Those interested should lodge a refundable expression of interest as soon as possible. If wishing to attend the briefing, please RSVP to the Trust Office by c.o.b. 15 December for details of the venue.

**SOUTH AMERICA** - Sunday 26 July to various dates in August 1998

26 persons have now paid deposits of at least \$300 for this great tour. At the time of writing, only a few places remained for the tour as far as Lima or Quito, and only 1 place for the concluding Galapagos component. Interested persons should contact Garth Setchell (ph 02-62901100) for details as soon as possible. A waitlist will also be maintained in case of cancellations. Travel insurance essential.

**PERIGORD, PYRENEES AND PROVENCE** - Tuesday 28 July to Sunday 23 August 1998

Following the success of the recent walking tour to Tuscany and the Dolomites - 3 ACT participants - we are now



offering places on Adventure Wildlife and Park Treks' 1998 tour to Southern France. The probable cost of \$7300pp twin or \$8250 sgl includes return economy air fares, en suite accommodation each night, 16 dinners and all breakfasts, 9 days of guided walking around Sarlat and Bareges, a 7-day coach tour of Southern France (covering Carcassone, Avignon, Aix-en-Provence and Nice), a 3-day Paris Metro Pass, a 1-day Paris Museum Pass, a TGV ticket from Nice to Paris, several other entries, transfers and airport taxes, etc. The walks will be easiest around Sarlat but harder (with easier options) in the spectacular Hautes Pyrenees near Bareges. Payment in full is required by 22 May 1998. Conditions apply. Details available from Garth Setchell (ph 02-62901100). Travel insurance essential.

**\$500 DEPOSIT REQUIRED ASAP (BEFORE 19 DECEMBER) TO RESERVE A PLACE.**

#### **WALKS AND TOURS PROGRAM - SOME DATES FOR 1998**

The 1998 program is still being developed. Apart from the activities mentioned in this issue, details will be published in subsequent issues of Trust News.

Some proposed activities, with dates where known, are listed hereunder:

- \* **14-16 March** (Canberra Day Weekend) - Self-drive and mini-coach(?) tour to the former shale mining towns of **Newnes and Glen Davis**.
  - \* **18-26 April** - Minicoach tour to **Bright and the Victorian High Country** in Autumn.
  - \* **Late April/early May** - Possible weekend coach tour to **gardens in the Blue Mountains**, run in parallel with an 8-day tour to places of heritage interest around **Mudgee and the Hunter Valley**.
  - \* **May** - Another crack at **the Historic Corn Trail** for those who missed out.
  - \* **13-28 June** - Minicoach tour to the **Corner Country, Birdsville and the Flinders Ranges**.
  - \* **September** - A one day (or weekend) coach tour to some of Sydney's most historic houses (eg **Camden Park** and **Rouse Hill House**).
  - \* **October** - **Whale watching** on the Far South Coast.
  - \* **3-11 October** - Minicoach tour at wildflower time to **the Grampians and Little Desert**, with heritage and garden inclusions.
-



**NATIONAL TRUST OF AUSTRALIA (ACT)**  
**WALKS AND TOURS PROGRAM**  
**APPLICATION FORM**

Please post THIS ENTIRE FORM to the Ticket Secretary, National Trust of Australia (ACT), PO Box 3173, Manuka ACT 2603, together with a long, stamped, self-addressed envelope for each activity being applied for. If you wish to apply later for other activities, please request another form. Make cheques payable to The National Trust of Australia (ACT). Payment by credit card acceptable. Please note that activity details are not normally posted out until a few weeks before each activity.

EARLY APPLICATION IS APPRECIATED AS IT ASSISTS US WITH ARRANGEMENTS. Places are allotted in order of payment. The concession (conc) rate, where offered, applies to pensioners, seniors, children and full-time students. A surcharge may apply to all non-members (nonm) to encourage membership. Commercial conditions apply to cancellations on tours where travel insurance is recommended. Because of the costs involved, a minimum fee of \$2 (at cost after the "Bookings Close" date) will be retained on all other cancellations. Queries may be addressed to the Trust Office (ph 02-62395222 during office hours) or to Garth Setchell (ph 02-62901100).

SURNAME OF APPLICANT \_\_\_\_\_ TITLE \_\_\_\_\_ INITIALS \_\_\_\_\_ M'SHIP NO \_\_\_\_\_  
 ADDRESS OF APPLICANT \_\_\_\_\_  
 \_\_\_\_\_ PHONE (H) \_\_\_\_\_ (W) \_\_\_\_\_

SPECIAL REQUIREMENTS (eg vegetarian/gd fl accom) \_\_\_\_\_

**NEW YEAR IN THE SNOWY - Sunday 28 December 1997 to Friday 2 January 1998**

Applicants requiring dbl/twin accom (pl circle)	_____pers @	\$ 830pp	= \$ _____
Applicants requiring sgl accom	_____pers @	\$ 960pp	= \$ _____
less \$150 expr'n of interest (if prev paid)	DEDUCT _____pers @	\$ 150pp	= \$ _____
Travel insurance (if reqd) - cancellation cover	ADD _____pers @	\$ 30pp	= \$ _____
or - full cover	ADD _____pers @	\$ 38pp	= \$ _____
* Names of others covered by this application: _____			
			TOTAL ENCLOSED = \$ _____

**MURRAMARANG AND BURREWARRA - Saturday 21 and Sunday 22 February 1998**

All applicants (excl accom but incl walks, party)	_____pers @	\$ 25pp	= \$ _____
Persons also requiring cabin accom (Fri + Sat):			
2 persons per cabin	ADD _____pers @	\$ 36pp	= \$ _____
3 persons per cabin	ADD _____pers @	\$ 24pp	= \$ _____
4 persons per cabin	ADD _____pers @	\$ 18pp	= \$ _____
5-6 persons per cabin	ADD _____pers @	\$ 14pp	= \$ _____
Persons also requiring cabin accom (Sat nt only):			
2 persons per cabin	ADD _____pers @	\$ 18pp	= \$ _____
3 persons per cabin	ADD _____pers @	\$ 12pp	= \$ _____
4 persons per cabin	ADD _____pers @	\$ 9pp	= \$ _____
5-6 persons per cabin	ADD _____pers @	\$ 7pp	= \$ _____
Persons qualifying for concession rate	DEDUCT _____conc @	\$ 5pp	= \$ _____
All non-members	ADD _____nonm @	\$ 5pp	= \$ _____
* Names of others covered by this application: _____			
			TOTAL ENCLOSED = \$ _____
* Names of others sharing cabin (if applicable): _____			



**VIETNAM - Tuesday 3 March to Wednesday 18 March 1998**

Refundable expression of interest \_\_\_\_\_ pers @ \$ 25pp = \$ \_\_\_\_\_

\* Names of others covered by this application: \_\_\_\_\_

TOTAL ENCLOSED = \$ \_\_\_\_\_

\* Please indicate no of persons attending briefing on 16 Dec 1997 \_\_\_\_\_

**PERIGORD, PYRENEES AND PROVENCE - Tuesday 28 July to Sunday 23 August 1998**

Deposit \_\_\_\_\_ pers @ \$ 500pp = \$ \_\_\_\_\_

Travel insurance (if reqd) - sgl person ADD \_\_\_\_\_ pers @ \$ 194pp = \$ \_\_\_\_\_

or - partners ADD \_\_\_\_\_ pers @ \$ 182pp = \$ \_\_\_\_\_

\* Names of others covered by this application: \_\_\_\_\_

TOTAL ENCLOSED = \$ \_\_\_\_\_

PAYMENT CAN BE MADE BY CASH, CHEQUE OR CREDIT CARD GRAND TOTAL = \$ \_\_\_\_\_

If paying by credit card, please debit my Bankcard ☐ Mastercard ☐ or Visa ☐

CREDIT CARD NUMBER \_\_\_\_\_ EXPIRY DATE \_\_\_\_/\_\_\_\_/\_\_\_\_

NAME ON CARD \_\_\_\_\_ SIGNATURE \_\_\_\_\_

PLEASE SEND ME ANOTHER APPLICATION FORM BY RETURN MAIL YES/NO

**Views on Heritage Matters (cont.)**

**ACT Liberals**

The Canberra Liberals believe that conservation of our natural and cultural heritage is an integral part of maintaining the essential nature of Canberra. Over the last three years we have made significant progress in the area of conservation for both our natural and built environments and we will continue during the next term.

**Conservation of the Natural Environment  
Environment Protection:**

The Canberra Liberal Government's biggest single achievement in this area has been the development of the Environment Protection Bill (EPB), which will be passed into legislation before the end of 1997. The EPB supersedes five outdated pieces of legislation and brings about a regime where all sectors of the community will be encouraged to become involved in the protection of our environment.

**Nature Conservation:**

In the area of nature conservation the government has declared 19 species and two communities endangered and has taken considerable steps towards making those declarations effective by the introduction of action plans to protect declared species and communities. By the end of the year, the Government will finalise six action plans for the recovery of declared species and communities and three more will be released, for consultation, in December. In addition we have revived the process of developing management plans for reserves and parks. We have also overseen the preparation of the draft Nature Conservation Strategy, emphasising the theme of living with nature, which will be finalised by the end of the year. This theme is evidenced by such strategies as the Kangaroo Advisory Committee which has established extensive data on

kangaroo populations and their management in the ACT; a 10-year Weed Strategy to eliminate major weeds in the ACT; and a Roadside Vegetation Strategy to conserve remnant native vegetation in road reserves.

**Heritage**

The ACT Liberals recognise that heritage is of significant importance to the ACT community. It helps to develop a better understanding of our city's origins and history. The Government has streamlined the development approval process via the changes to the Land Act in June 1997 and has foreshadowed amendments to Part V of the Act to expedite the process of heritage listing. In the meantime, we are committed to ensuring the highest level of protection for ACT Heritage as evidenced by the quick action in issuing Executive Orders to rectify damage in the case of the FCC15 house in Arthur Circle, Forrest.

**Canberra Museum and Gallery**

The ACT Liberal Government has commissioned and started construction of the Canberra Museum and Gallery, scheduled for completion before the end of the year. It is designed to showcase the history and visual arts of Canberra.

**Significant Canberra Sites**

The Canberra Liberals have taken steps to secure the future of significant heritage sites across the ACT. The Yarralumla Brickworks is already on the Register of the National Estate and is currently being assessed for entry on the ACT Heritage Places Register. A fence and security system have been installed at Duntroon Dairy. A great deal of repair work and restoration has also occurred at the Duntroon Woolshed, Tuggeranong Schoolhouse and Homestead.



**Australian War Memorial : Anzac Parade, Campbell (Open 9am-5pm daily)**

It is at the top of Anzac Parade just below Mount Ainslie, and directly in line with the Old Parliament House and the New Parliament House. It is one of Australia's finest Art Deco buildings. Construction began in 1934 and it took seven years to complete. Its grey walls and copper dome encloses one of our finest military museums. The Australian War Memorial houses a very large collection of models, displays, paintings, relics and records of the history of Australians at war since 1885, between the period of Gallipoli and the Gulf War. In the central courtyard is the Roll of Honour listing all the Australians that have died while fighting. The tomb of the Unknown Soldier is located in the chapel's dome. The Cloisters are decorated with 26 gargoyles relating to Australian animals such as the kookaburra, possum, frilled lizard, mopoke, and carpet snake.

There are many activities happening at the Australian War Memorial during the holidays.

For example:

- "Rocket Tours" on 21 Dec. '97 (11am), 7 Jan. '98 (11am & 2pm), 14 Jan. '98 (11am & 2pm), 18 Jan. '98 (11am & 2pm), 21 Jan. '98 (11am & 2pm), and 28 Jan. '98 (11am & 2pm).  
Cost: \$15. adults & \$10. concession. Bookings required, (02) 6241 8949
- "Childrens Tour" on 10 Jan. '98 (10.30am), 11 Jan. '98 (10.30am), 17 Jan. '98 (10.30am), 18 Jan. '98 (10.30am), and 24 Jan. '98 (10.30am).
- Music by the "Canberra Musicians Jazz Orchestra" on 21 Dec. '97 and 26 Jan. '98 at 2pm.
- "Anzac Parade Walking Tour" on 25 Jan. '98 at 10.30am.
- Music by the "Cantare Choir" on 4 Jan. '98 (2pm), 1 Feb. '98 (2pm) in the Cloisters.
- Musical performance of "Canberra City Pipes and Drums" on 18 Jan. '98 at 2pm on the grounds at the front of the Memorial.
- School holiday program, "Simpson and His Donkeys", in the Telstra Theatre from 12th -16th and 19th - 21st of January '98 from 10am to 11am.  
Cost: TBA. For information call (02) 6243 4268. Large groups must book.
- "Australia Day" festivities (26 Jan. '98).

**Lanyon Homestead : Tharwa Drive, Tharwa A.C.T. (Open Tues.-Sun.: 10am - 4pm)**

The buildings on Lanyon grounds were built at different times through out the 1800's. James Wright came to Australia in the early 1800's while his two partners, J.M.H. Lanyon and William Wright, remained in England. On this desolated property James Wright used convict labour allotted to him in the 1830's to build the outer buildings such as the dairy, blacksmith's shop, and the barracks for the convicts who worked on his isolated property. The property of Tharwa was granted to James Wright in 1835 for sheep farming and his two partners came over from Derby England. Three years later James Wright brother, William, was killed in a tragic shooting accident, so Lanyon returned to England at the request of his mother. James Wright remained and built a small stone cottage with a bell tower. In the bell tower was a bronze bell which was rung to call the shepherds and convicts from the paddocks. Andrew Cunningham, a prosperous Scottish banker, bought Lanyon in 1848, and thus became one of the most influential men in the district.. A.J. Cunningham built the main homestead in 1859. It has been beautifully restored with period furniture. Going through it one has a better understanding of how people lived then. When Cunningham took over Lanyon, it became the first property in the district to fence sheep in pastures so shepherds were no longer needed. Located in one of the adjoining buildings of the main homestead is the *National Trust Shop* selling a variety of interesting items. Lanyon in its beautiful surroundings is certainly worth a visit.

**St. Andrew's Presbyterian Church : State Circle, Forrest**

This church was built in two stages: 1st - the church, 2nd - the nave. In 1929, John Barr designed this Gothic sandstone church. The Peace Memorial Nave, designed by John Haskell, was not added until 1979. The prominent feature of this church is its spire that can be seen from far away. Another important part of this church is the Warriors' Chapel. In it there are memorials for the people who died during both World Wars, such as a parish Honour Roll and a tablet stating the names of Presbyterian ministers who were killed in action or died on service. Another important feature is the organ, by Hill, Norman and Beark, since it is one of the the finest instruments in Australia. Australian craftsmanship is evident in this church. The windows and woodwork were done in Sydney. The wood used through out the church is Queensland Maple.



### **Duntroon House : Royal Military College (Plant Rd., Campbell)**

It is now the *officer's mess* of the *Royal Military College*. Robert Campbell, one of the colony's first free merchants, settled in Canberra around 1825. He called his property 'Duntroon'. In 1833 he built a simple verandahed shed. A bit later it was extended by adding a sandstone Victorian house which has steeply pitched cable roofs and elaborate chimneys. It was considered to be one of the greatest homesteads in the district. In 1846, Robert Campbell died in this house.

### **The Carillon : Aspen Island, Central Basin, Lake Burley Griffin**

It was a gift from the British Government to mark Canberra's 50th jubilee. It is the result of a limited architectural competition held in 1967. It is a non-functional building set in a spectacular setting. The tower is made up of three shafts which symbolise the British Government, the Australian Government, and the city of Canberra. All the woodwork within the Carillon is of English oak. The Carillon houses a set of 53 bells all cast in bronze. On Wednesdays, Sundays, and public holidays one can hear magnificent recitals projecting across Lake Burley Griffin.



---

## THE STORY OF THE CHRISTMAS CARD

At Christmas most people send and receive Christmas cards. Often these cards are a means of communication with people they do not correspond with on a regular basis. In sending cards they not only spread goodwill during the festive season but catch up with news of family and friends.

We have become so used to the custom of sending and receiving Christmas cards that we rarely stop to wonder how the idea of the Christmas card to spread Christmas cheer came about.

The whole idea sprang from one man called Sir Henry Cole [1808-82] who was Secretary of the Department of Science and Art in Britain and the most powerful politician of his generation.

He wanted people to appreciate art and so he introduced the idea of a printed Christmas card with a piece of art on it. He commissioned John Callcott Horsley, a friend and colleague at the Academy of Art in London to design, print and hand colour 1000 cards to be marketed for Christmas 1843. However, the cards did not sell well for they cost one shilling each, the equivalent of \$ 10 each in our money. The art on the front was also criticised by the London Temperance Societies for showing a Christmas feast with a lot of hearty drinking.

It was 1863 before Christmas cards were again produced. This time they were cheaper for lithographic printing with colours had come in. Being affordable, people purchased them readily and the idea of the Christmas card "caught on". By 1880 the printing of Christmas and other cards was a thriving industry.

By the 1880s and 1890s cards had become elaborate, adorned with fringes, tassels, ribbons, paper lace and glitter. Christmas cards showed snowy scenes with churches, villages, stagecoaches and birds, floral arrangements, cupids and small children.

In Australia Christmas card manufacture did not start until John Sands of Sydney took it up in the 1880s. He was one of the first people to try to promote an Australian Christmas card and called for designs through a competition.

While cards with an Australian theme are still seen today, the traditional English Christmas card with its snow has remained popular as have scenes of the Nativity and the Three Wise Men bringing their gifts, which show what Christmas is all about.



BE! CHRISTMAS! GIVE TO THE POOR! BRIGHT BAY!

---

*With thanks to Libby Mercer and the National Trust of Tasmania*

---



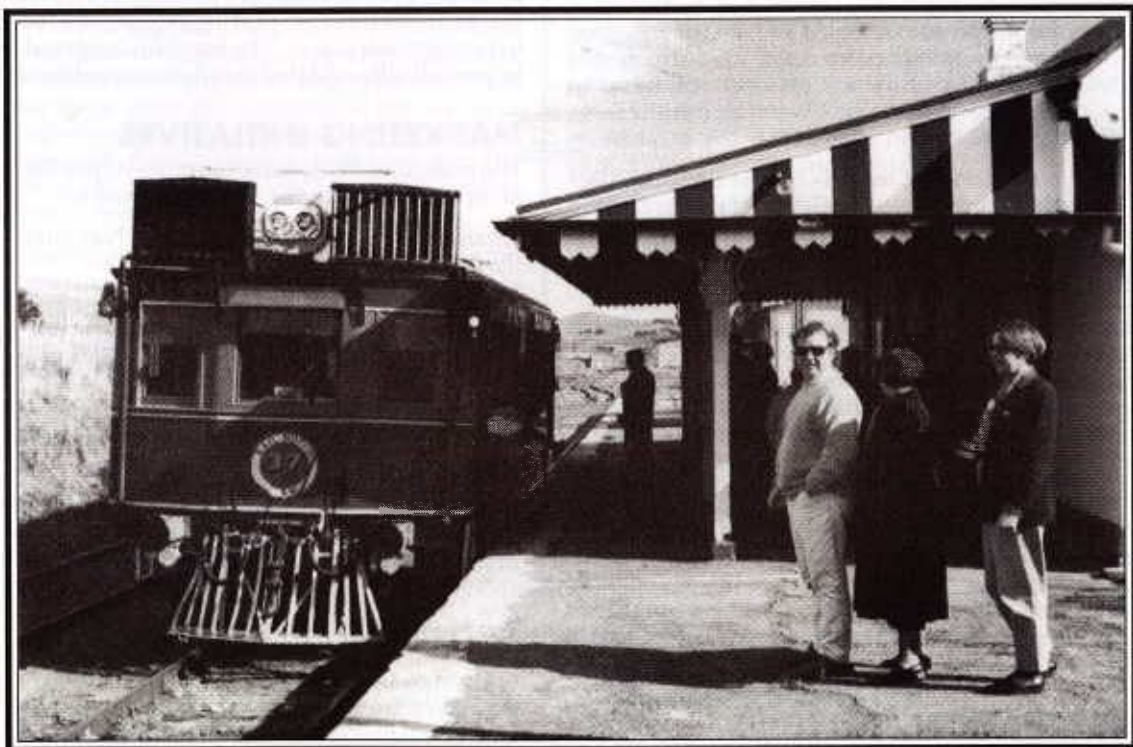
---

## RECENT WALKS AND TOURS



*At the Colverwell gravesite*

*Molonglo Meanderings*



*At Michelago*

*Tin Hare to Michelago*

---

# NEWS FROM THE NATIONAL OFFICE—THE AUSTRALIAN COUNCIL OF NATIONAL TRUSTS

## BACKGROUND, ROLE AND STRUCTURE—ACNT

The ACNT was established in 1965 to enable the National Trust movement to be represented at a federal level. Additionally it provided a forum through which the organisation could discuss matters of mutual interest.

Whilst retaining its original purpose changing circumstances have, over time, ensured that the role of the ACNT Secretariat has evolved and expanded. Its 'mission' now is to support, coordinate and represent the National Trust movement in Australia. To achieve this it: represents the movement nationally and internationally; acts as a national conservation advocate and markets the movement and its conservation objectives to the Australian community. There has been an increasing emphasis on a coordination role.

The ACNT Board is a representative council of each State and Territory National Trust. Although constitutionally two delegates are allowed there is only one vote per Trust. The Board meets twice yearly. Decisions made at these meetings are reported to State and Territory Councils for consideration.

The small ACNT Secretariat (3 F/T and 2 P/T employees) is based in Canberra. It is independent of the ACT Trust office.

## RECENT AND CURRENT ACTIVITIES CULTURAL HERITAGE—FUTURE DIRECTIONS

Following the November 1996 ACNT Board meeting, the ACNT Secretariat prepared a strategy plan to present a National Trust view of the nation's cultural heritage needs. Consultative discussions were held with State and Territory representatives as part of the exercise.

The paper was endorsed in principle at the May 1997 ACNT Board meeting (subject to the secretariat preparing a second paper defining a 'new role' for the Trust). A draft second paper has since been circulated to State and Territory Trusts for comment.

Through the Minister for the Environment's office the National Trust's views have been considered in the context of a broader inquiry assessing Commonwealth and State roles and responsibilities in the environment (including heritage considerations).

This exercise has been valuable in allowing the organisation to re-focus on issues which it considers important in a national context. It is intended that the documents will be used as a basis for future national lobbying, particularly in the lead up to the next federal election. Plans will be made to undertake a number of presentations to party and parliamentary committees in the early part of 1998.

## CONSERVATION ACTIVITIES

The ACNT Secretariat has consulted and/or coordinated with State and Territory National Trusts in the preparation of a number of submissions to various Commonwealth government 'investigations'. The responses have covered a wide range of topics including:

- three AHC papers looking at Australia's cultural heritage;
- heritage access (evidence was also given to a Senate committee);
- a review of the Australian Postal Corporation;
- Commonwealth and State and Territory roles and responsibilities towards the environment.

The Secretariat is also preparing and coordinating projects to enable the better conservation and management of our cultural heritage. The projects include:

- policy papers on fire risk management in heritage places, the disposal of public property and managing our volunteers; *and*
- a case study examining the introduction of disabled access into heritage places. This study will be surveying about twenty National Trust places around Australia to develop particular studies.

In conjunction with the States and Territories, the Secretariat is lobbying governments by voicing community concerns on a number of issues. Matters covered recently include:

- Coongie Wetlands in South Australia;
- greenhouse gas emissions; *and*
- disposal of defence properties.

Plans are underway to launch an Endangered Places program over the coming months. The aim of the program is to alert the public to Australia's cultural heritage places under threat, including suggested actions to assist in saving these places. The list of Endangered Places will be periodically updated to reflect current heritage issues.

## MARKETING INITIATIVES

The inaugural National (Properties) Open Day provided an opportunity for the National Trust to:

- raise the national profile of the National Trust as a heritage conservation organisation;
- encourage and facilitate participation in the National Trust at a community level;
- increase membership numbers; *and*
- generate revenue through complementary activities.

The Secretariat will be evaluating the 'event' and reporting to the ACNT Board on the initiative at a forthcoming November 1997 meeting.

A 1998 National Open Day has been planned for 20 September 1998 (as part of a 2 year trial). If the initiative proves successful, the ACNT will be pursuing national sponsorship support.

The National Membership Survey currently underway will assist in providing the organisation with a clearer understanding of the desires and expectations of its members. By the end of the year the survey will have been circulated to all States and Territories except Victoria which will be done in early 1998. A response rate of 10-15% has been most pleasing. Analysis should be completed in early 1998.

The national 'profiling' initiative involving "Country Style" magazine continues to be very successful. The



success of this venture is reflected in increased awareness of specific National Trust activities through "Matters of Trust", increased visitor numbers to properties featured in the articles, and increased memberships. It is proposed that this relationship will continue to be developed, and perhaps expanded to include the annual "Country Weddings" magazine produced by the same organisation.

## 1997 MEMBERSHIP SURVEY

Our members surveys have now been tallied. Lyndal Higgins of the ACNT took on this task and the results have now come back to the Trust office. Our response rate was over 10% which is very gratifying and the Trust would like to thank all those who took the time to respond.

It came as no surprise to find that over half our members are retired people. We value your patronage very much but hope to spread our message a little wider in future. The Trust must find ways to get its message out to a younger audience and would appreciate your practical suggestions as to how this may best be done. Our plan to set up a home page on the internet is a step in this direction.

Many respondents said they joined the Trust to help with heritage conservation, not just to gain free admission to properties. The other major reason for joining was to participate in Trust tours.

Overwhelmingly, respondents felt that registering historic buildings and places, increasing public awareness about historic conservation and campaigning against the destruction of historic places to be the Trust's most important functions.

"Trust News" is the main link between the Trust and you, the members. We are grateful to those of you who took the time to elaborate on your answers, giving us a clearer idea of how we can make improvements in future. It was pleasing that there were few complaints but we have plans for improvements anyway, some of which have been implemented this issue: you will note that the layout has been rationalised to make it easier for readers to locate items of member interest.

Although some respondents felt that Trust tours were too expensive, our tour costs are always to be favourably compared with similar tours run by others. Garth's trips are always well planned and researched and those who do go on these trips have high praise for his efforts.

Once again, thank you to all who responded. Of course, if you have any ideas or suggestions to offer at any time, just contact the Trust office.

*Robyn Trezise*



## HELP WANTED—YOUR TRUST NEEDS YOU!

### Lanyon Guardians / Gift Shop Volunteers

Lanyon is always in need of more volunteers to help out as guardians or giftshop workers. Guardian duty involves attending the occasional training session and learning about the history, furnishing, interpretation and presentation of Lanyon. An outgoing personality is a help, as you must be able to talk to strangers of all ages. Gift Shop duty involves a day (10-4) in the shop at Lanyon once a month. If you can make a commitment to three hours or more at Lanyon per month, please call Jill or Paula on 6273 4744 (Gift Shop roster) or Fred Roberts on 6281 3681 (Guardian duty).

### "Trust News" Volunteers

Once every quarter helpers are needed to place inserts inside the newsletter and fold them for posting. This is not a glamorous job but a necessary one. At present there are twenty names on the list but there are always those who cannot make it for one reason or another—everyone seemed to be wintering elsewhere in August! A few more names would be appreciated. All that is needed to get the job done are 6 to 8 helpers for 3 to 5 hours once every three months. If you would like to put your name down, please phone Robyn at the Trust office on 6239 5222.

## Don't Forget the National Trust's 1997 ANNUAL GENERAL MEETING



on Thursday, 27 November at  
7.30 pm, Players' Room, Eastlake Football Club  
We look forward to seeing you there!



## INTERSTATE NATIONAL TRUST PROPERTIES

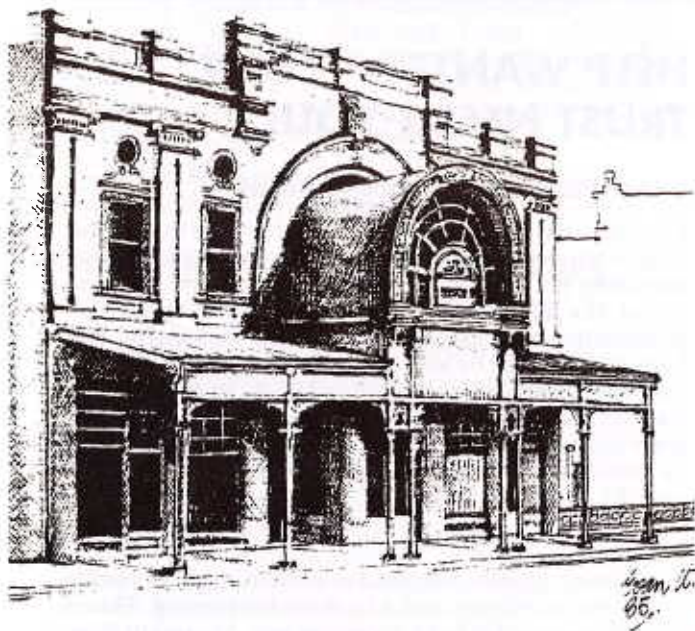
### STOCK EXCHANGE, CHARTERS TOWERS, QUEENSLAND

Gold was discovered at Charters Towers in 1871, ensuring great prosperity for the town. To reflect this new found wealth, the impressive Royal Arcade was built in Mosman Street, the centre of the town's business and social life, in around 1888. In 1890 the stock exchange was opened in this Arcade. A thriving business was conducted here for many years until the area's wealth production began to subside. The former assay room has now been made over into a museum of mining memorabilia.

In the late 1970s the National Trust combined with Charters Towers and Dalrymple Historical Society, the Charters Towers City and Dalrymple Shire councils, the ACNT and State and Federal governments to ensure the

building was saved and restored to its former glory.

Nowadays, the building is open daily except for Good Friday, Christmas Day and part of Anzac Day. Sunday is market day. Wheelchair access is available and dogs are allowed. Other facilities include ample parking, a food outlet and a gift shop. The local branch of the National Trust has its office in the building. For visitors to Charters Towers, other Trust properties in the town are the Venus Gold Battery and the Zara Clarke Museum. For non-members, concession tickets are available if visiting all three, but, of course, National Trust members have free entry. To make enquiries, phone (07) 4787 2374.



#### *Any Old Crochet . . .*

I am researching information on the history of crochet in Australia since 1800 for inclusion in a book to be published for distribution in the Centenary of Federation, 2001. Any information of work carried out by you, your family or friends, or any other relevant facts, no matter how trivial, is of interest. Please get in touch and I will provide further information or send a questionnaire. Bronwin Bourke, c/- GPO Box 1867, Brisbane Qld. 4001. (Ph. 015 037 215).

#### *. . . Or Any New Crochet?*

Expressions of interest are invited from artists and craft practitioners in Australia and New Zealand who wish to participate in a juried exhibition of contemporary crocheting to be held in late 1998 at the Crafts Council of Queensland Gallery, Brisbane. The use of unusual and interesting fibres and forms are looked for, although there will be a place for traditional techniques. Closing date for proposals is May 30th, 1998. Direct enquiries to Bronwin Bourke (see above).

*For paint work with a touch of excellence contact*



**Besselink Bros. (Protective Coatings) Pty. Ltd.**  
PAINTING & DECORATING CONTRACTORS

10 ENDURANCE AVENUE, QUEANBEYAN, N.S.W.  
P. O. Box 487 Queanbeyan, N.S.W. 2620

Telephone (02) 6297 3177 or 6297 6266 Fax. (02) 6299 1254

*with over 45 years experience in Canberra and surrounding district.*



## WHITE GARDEN APPEAL DECISION

Members will know that the National Trust and the Australian Garden History Society appealed against the decision of the ACT Heritage Council to remove the heritage listing on the garden created by Sir Harold White and Lady White at 27 Mugga Way. The Trust subsequently withdrew from the process\*. The appeal was heard by the ACT Administrative Appeals Tribunal. The appeal was dismissed.

The garden was removed from the Interim Heritage Places Register because:

- the elements of the garden had been lost over the years;
- the claim that the place displayed botanical diversity and genetic richness was considered to be no longer valid;
- many trees are in decline and neglect with an invasion of weed species;
- there was no legal basis to require the lease to remedy the neglect;
- elements reflecting the distinctive way of life of the Whites may be detected but are no longer of sufficient substance to warrant heritage registration.

The findings of the Tribunal were that none of the criteria are met to sufficient extent to justify the retention of the garden on an Interim Heritage Places Register.

The Tribunal also found that the only basis on which discretion to retain the garden on an Interim Register should possibly be exercised would be if there was a prospect that the garden would be reconstructed in the near future. In the absence of any legal capacity to require the owners to maintain or restore the garden and in the absence of any commitment by them to do so under the current arrangements, there is no basis on which the discretion should be exercised. The almost certain demolition of the Whites' home and the erection of at least one other dwelling will cause further change.

A copy of the judgment may be obtained from the Tribunal.

*Judith Baskin*

\*Footnote: It should be noted that the Trust's withdrawal followed discussions with the new owners of the former White block and their landscape architect. Trust Council was also mindful of the conservation difficulties involved in attempting to re-create a garden where no layout plan or detailed plan exists.

*Professor Ken Taylor*

*From "Everybody's" magazine, May 1920*

*(Goshen, Indiana, News-Times)*

Members of the South Bend Police Department spent a fruitless two hours Monday morning in quizzing John Harvath, of Kentucky Street, who was shot and killed at Winklers Crossing.

**He positively refused to be interviewed.**

## ACTON HOTEL

In July this year the Classification Committee decided upon a review of the draft citation of this building after a site visit by Committee members and members of the ACT Heritage Council. Acton Hotel was designed by J. S. Murdoch and built between 1927 and 1949. Whilst it was confirmed that many alterations had been made to the building over the years, there were many significant aspects of the original building still remaining, including many of the original plantings.

Members of the Classifications Committee felt the site to have very strong sociological ties for the Canberra community with so many public servants having started their life in Canberra there. The Heritage Council has advertised for public comments to better ascertain the building's significance.

In the mean time the Classifications Committee has Recorded the draft citation and a copy of this document has been forwarded to the ACT Heritage Council and the Australian Heritage Commission. Trust members were asked to provide stories of their time spent at Acton and many responses have been received. If you were one of those who missed out on getting notification of this in your "Trust News", you may still share your experiences at Acton by contacting Judith Baskin on 6292 5109 or Lloyd Wrigley on 6254 3677 before 30 November.

### A SPECIAL INVITATION TO TRUST MEMBERS FROM AUSTRALIAN COUNTRY STYLE MAGAZINE

*Australian Country Style*, the nation's leading country lifestyle magazine, is delighted to be able to offer National Trust members an exceptional discount on the price of a 12-issue subscription in recognition of our mutual interest in Australia's heritage. Not only can National Trust members purchase a



subscription for just \$40, a saving of nearly \$20 on the magazine's cover price, but *Australian Country Style* will make a donation of \$3 to the National Trust in the state of every Trust member to take out a new subscription.

To take advantage of this unique subscription offer, simply telephone FREECALL 1800 800 933 with your credit card details ready, or send a cheque or money order payable to Federal Publishing Company with your full name, address and telephone number and your National Trust membership number to:

Reply Paid No.3, Federal Publishing Subscriptions,  
PO Box 199, Alexandria, NSW 2015 (No postage stamp required).



## RECENT TRUST CLASSIFICATIONS

Council recently approved the Classification of the Evans Crescent Precinct, Griffith. The Trust's citation was prepared by Ken Charlton. A summary of the reasons for this site being Classified is given below.

### EVANS CRESCENT PRECINCT, GRIFFITH

The five houses (nos. 7,9,11,15 & 17) in Evans Crescent, Griffith, which comprise this precinct were designed by the Architects Malcolm Moir and his wife Heather Sutherland in 1938-39 and were some of the first truly modern houses in Canberra. Their sites on a sloping crescent allowed the designers to exploit the three-dimensional expression of the functionalist style and the play of levels which is utilised by incorporating split-level planning. The strict symmetry common in past styles was seen as old-fashioned by the architects designing in this architectural style, in which the form of a building followed the function for which each of its elements was intended. Asymmetrical massing resulted from the solidity of bedroom walls of brickwork on one side of a house contrasting with the lightness of glazing around living areas on the other.

Statement of Significance - The Evans Crescent Housing Precinct is an example of significant architectural style and a valuable educational resource. These houses were built when the Inter-War Functionalist Style (1915-1940) was relatively new in Australia. The designs incorporate features which are peculiar to the style including asymmetrical massing, simple geometric shapes, long horizontal balconies, rooves concealed by parapets and metal framed windows.

Three of the houses (Blocks 3, 5 and 7), have great merit as they retain their original character. They demonstrate three different massing types and the growth in design confidence by the architects as consecutive designs unfolded. This is exemplified in the first home designed (Block 3) with its tiled roof over the living areas, a conservative roof form that was abandoned in the later designs where rooves are concealed by parapets.

The Evans Crescent Housing Precinct is the best Canberra example of the Inter-War Functionalist Style. Its external elements are more typical of the style than the only other (and more restrained) group of the period in Canberra, the Forrest Fire Station Precinct built in 1939.

The architecture of the buildings that form the Precinct may contribute significantly to the education of local designers and planners in their understanding of inter-war architectural styles.

## TREES IN THE A.C.T. 7

Extract from the Register of Significant Trees

SPECIES: *Quercus ilex*

COMMON NAME: Holm Oak

AGE: ca 75 years

MEASUREMENTS: Height 18m; crown diameter 18m; height 1m above soil level but below where trunk divides into five main limbs, 1.13m

CONDITION: Healthy with an expected life of at least another 60 years if present growing conditions are maintained.

LOCATION: Cnr Monaro Cres and Torres Street, Red Hill, outside number 8 Monaro Crescent.

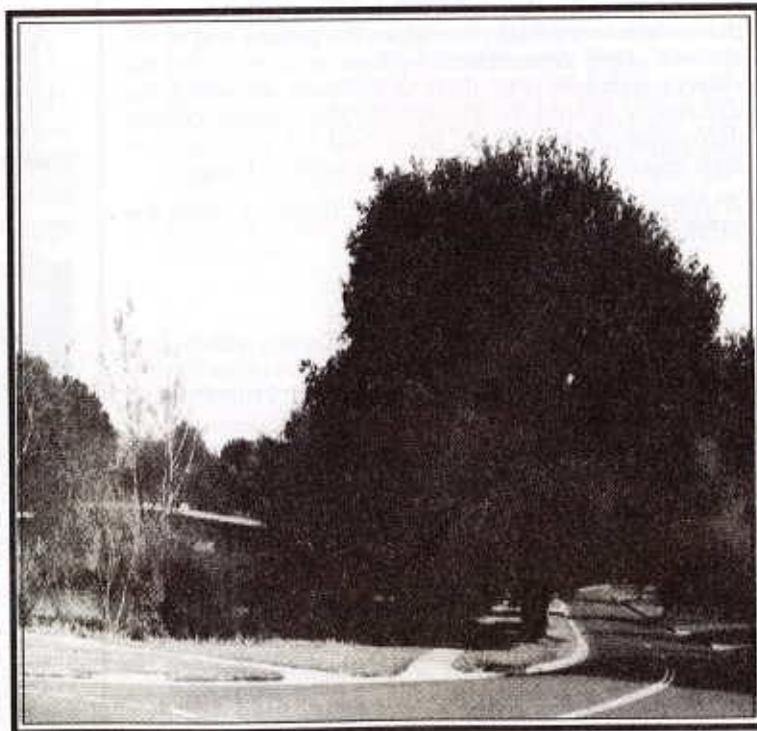
CATEGORY: Proposed for Recording by the National Trust (ACT)

FEATURES: This is the largest tree in a street planting of Holm Oak and Cork Oak (*Quercus suber*) attributed to Charles Weston. Officer-in-Charge Afforestation 1913-26.

### SPECIES

**CHARACTERISTICS:** A hardy evergreen oak native to the Mediterranean region. Distinguished from Cork Oak by its smooth rather than corky bark. The specific name refers to the dark green, glossy leaves which resemble those of *Ilex*, the holly. The common name Holm is a version of the Old English word for holly. Holm Oak was popular in public gardens at the turn of this century. A magnificent specimen in the grounds of the Cathedral Church of St David in Hobart has been Classified by the Tasmanian National Trust.

Dr R Boden



Holm Oak (*Quercus ilex*), cnr. Torres Street & Monaro Crescent, Red Hill



## NEW MEMBERS

The National Trust of Australia (ACT) extends a very warm welcome to the following new members. If any members know these new members, perhaps you could encourage them to attend one of our many activities.

Abraham, Ms M, Duffy  
 Aitken, Mr P & Mrs W, Murrumbateman NSW  
 Amey, Ms D, Ainslie  
 Backen, Ms L, Duffy  
 Bailey, Mr I & Mrs G, Griffith  
 Beardow, Mr T & Mr R, Stirling  
 Bevege, Mr D, Fraser  
 Bodley, Mrs E, Watson  
 Boland, Mr G & Mrs P, Watson  
 Boldra, Mr R & Mrs P, Chisholm  
 Brain, Mr J, Evatt  
 Brennan, Prof M & Mrs I, Bruce  
 Brinkmann, Mr H & Mrs C, Holt  
 Bulpit, Ms D, Gilmore  
 Burrows, Mr A & Mrs J, Woden  
 Burrows, Mr S, Woden  
 Canberra Sightseeing  
 Chesworth, Mr L & Mrs M, via Quenabeyan NSW  
 Chuck, Mr & Mrs S, Ngunnawal  
 Clark, Mrs J, Boorowa NSW  
 Clark, Mr J & Mrs J, Downer  
 Clarke, Mr J & Mrs L, Merimbula NSW  
 Clay, Mr R & Mrs C, Phillip  
 Cohen, Mr P & Mrs H, Duffy  
 Cozens, Ms V, Aranda  
 Croker, Mr D & Mrs G, Red Hill  
 Daniels, Mr & Mrs C, Kambah  
 Day, Ms L, Fraser  
 De Landelles, Mr I & Mrs M, Hawker  
 Dibley, Mr D & Mrs M, Griffith  
 Donohoe, Mr A, Boorowa NSW  
 Dovey, Ms A & Mrs C, Florey  
 Francis, Mr D & Mrs P, Griffith  
 French, Mr R & Mrs G, Kambah  
 Gaffey, Mr S, Latham  
 Gallagher, Mr P & Mrs V, Kambah  
 Giurgola, Mr R & Ms P, Forrest  
 Glanville, Dr D, Forrest  
 Gore, Mrs M, Mackellar  
 Greaney, Mrs M, Yarralumla  
 Greenwood, Mrs M, Gowrie  
 Hardy, Mrs D, Hughes  
 Hayne, Ms K, Yass NSW  
 Herrmann, Ms C, Evatt  
 Hookway, Mr D & Ms A, Narrabundah  
 Howes, Mr D & Mrs L, Kambah  
 Hudson, Mr C, Belconnen  
 Hunt, Ms P, Kambah  
 Illy, Mr & Mrs L, Bredbo NSW  
 Johnston, Mr B & Mrs J, Elderslie NSW  
 Jones, Mrs K, Belconnen  
 Kilham, Mr R & Mrs M, Melba  
 Kimball, Miss C, Jindera NSW  
 Knight, Ms J, Banyo QLD

Lee, Mr J, Belconnen  
 Lewincamp, Mr F & Mrs B, Narrabundah  
 Mc Alpine, Ms M, Kambah  
 McAree, Ms S, Kingston  
 McAuliffe, Mr G, Albury NSW  
 McClelland, Ms J, Deakin  
 McFarlane, Ms N, Aranda  
 Marron, Mr D & Mrs M, Fadden  
 Marshall, Mr G & Mrs B, Dickson  
 Martin, Mr M, Calwell  
 Millburn, Mr F & Mrs N, Pearce  
 Miners, Mr S & Mrs M, Holder  
 Mitchell, Mr G, Hughes  
 Mitchell, Mr V & Mrs M, Hughes  
 Moran, Dr L, Forrest  
 Muecke, Dr P & Mrs J, Kingston  
 Murrell-Orgill, Mr D & Mrs C, Cootamundra NSW  
 Muvy, Mr & Mrs H, Wahroonga NSW  
 Nicol, Ms R, Barton  
 Oatley, Mr & Mrs G, Richmond NSW  
 Pagel, Ms A, Barton  
 Paton, Mr I & Mrs E, Forrest  
 Pearson, Mr R & Mrs R, Weetangera  
 Peters, Mr P & Mrs J, Garran  
 Rayner, Mr B, Yass NSW  
 Richter, Mr A, Aranda  
 Roberts, Ms C, Gilmore  
 Rope, Miss C, Southgate UK  
 Smith, Mr K, Aranda  
 Smith, Mr S, Kingston  
 Stoyles, Mr B & Mrs L, Farrer  
 Taylforth, Mr A, Fisher  
 Taylforth, Mr G & Mrs C, Isaacs  
 Tennent, Mrs J, Farrer  
 Trimble, Miss S, Red Hill  
 Van Buynder, Dr P & Mrs J, Goulburn NSW  
 Wade, Mr R & Mrs Z, Nth Lyneham  
 Walker, Mr R & Mrs R, Campbell  
 Wansink, Mr G & Mrs J, Cooma Nth NSW  
 Ward, Mr D & Mrs M, Higgins  
 Warren, Mr D, Southgate UK  
 Wigley, Mr P & Mrs S, Reid  
 Williams, Mrs K, Curtin  
 Williams, Ms L, Belconnen  
 Young, Mrs D, Duffy  
 Zorzetto, Ms P, Calwell

### CORPORATE MEMBERS

- ❖ Totalcare Industries
- ❖ Clayton Utz
- ❖ Goddard and Partners
- ❖ Elect Printing
- ❖ Besselink Bros. (Protective Coatings) Pty. Ltd.
- and welcome to our new corporate member,*
- ❖ Canberra Sightseeing

### BENEFACTOR MEMBERS

- ❖ Justice Rae Else-Mitchell



## LIBRARY NEWS

### Recent Acquisitions

"National guidelines for the conservation of cemeteries" 1996, Australian Council of National Trusts  
Webster R.H. 1982, "Currency lad: the story of Hamilton Hume and the explorers", Leisure Magazines, Avalon Beach NSW

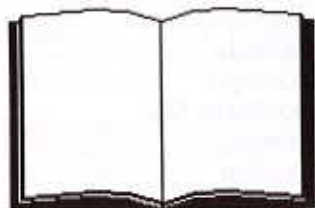
Ove Arup & Partners 1996, "Environmental impact statement: Federal Highway from Stirling Avenue (ACT) to Sutton Interchange (NSW): Proposed upgrading to dual carriageway. Volume 1" (donated by Lloyd Wrigley)

Garth Setchell has continued his Spring clean and donated several more items from his collection to our library. Those which have been added to the Trust's collection so far are: -

"The Cotter River catchment: policy plan. Draft for discussion" 1985, N.C.D.C. & Dept. Territories

Breckwoldt, R. 1978 "Scenic landscapes: guidelines for their protection", National Trust (NSW)

"Verandahs in country towns: the case for preservation" 1969, National Trust (NSW) & Royal Australian Institute of Architects



*Robyn Trezise*

## VOLUNTEERS!

Your presence is requested at the Trust's  
Volunteers' Christmas Party  
on **Friday, 5 December** at **12.30pm**

A presentation will be made to those who have given ten or more years of volunteer service to the Trust.

If you have not already registered your volunteer service with us, please contact the Trust office by 28 November.

RSVP by close of business on 28 November

*Bookings essential for catering purposes.*

Seating is limited. Please bring your own picnic blanket or chair (& table if required).

## DID YOU KNOW?

AS A TRUST MEMBER THERE ARE MANY BENEFITS, BUT SOME OF THESE ARE NOT WIDELY KNOWN. AS WELL AS RECIPROCAL RIGHTS WITH OTHER TRUSTS AND ENGLISH HERITAGE, AND DISCOUNTS AT OUR GIFT SHOPS, TRUST MEMBERSHIP ALSO ENTITLES YOU TO:

- ❖ A LOW COST PHOTOCOPIING AND FAX SERVICE
- ❖ DISCOUNTS AT HISTORIC HOTELS OF AUSTRALIA
- ❖ DISCOUNTS FOR TRUST WALKS AND TOURS

## OBITUARIES

### - Dr Robert Green

Members of the Lanyon Committee were saddened to hear of the death of Dr Robert Green. His admirable qualities and leadership were a great factor in the success of the committee. The combination of his humanitarianism and the straightness of his actions and his words gave a great confidence to all those with whom he worked. His enthusiasm for the work of the Trust and his exhaustive attention to detail were part of his great gift to the Committee, both as Chairman and committee member.

We all remember Robert Green with genuine affection and for the special achievements in his life.

We extend our sympathy to Audrey, his great support and comfort. *Charles Campbell*

### - Mrs Peg O'Brien

Long time Lanyon Gift Shop volunteer, Peg O'Brien, passed away in September. Ms O'Brien spent several years as a shop volunteer and also helped out on the gift shop stall at the Trust's annual Antique Fair. Jean Pound, who organises the shop roster, said of Mrs O'Brien that she was a bright and willing helper who performed her duties well.

Mrs O'Brien was a wonderful helper for the National Trust and will be sorely missed.

### - Mrs Greta Stewart & Miss Eileen Nicholson

Trust members Greta Stewart and Eileen Nicholson have also recently passed away. The Trust is saddened to lose valuable members and our condolences extend to their families and friends. Miss Nicholson was a Life Member of the National Trust.



---

## HOUSEHOLD HINTS, REMEDIES & RECIPES

From Kathleen Hawke's "Cornish sayings, superstitions and remedies" come these sayings and superstitions.

---

*As awkward as a cow with a musket.*

---

*A deserted maiden should steal her lover's jacket, turn the sleeves inside-out and bury it in the churchyard at night. The lover's heart will turn as the jacket rots until he comes back repentant to old flame.*

---

*If the bottom of your foot itches you will walk on strange ground.*

---



## NATIONAL TRUST (NSW) PRESENTS INTERWAR HOUSING SEMINAR, 3-4 APRIL 1998

The National Trust of Australia(NSW) is pleased to announce that Gavin Stamp is to be the keynote speaker at its seminar on interwar housing to be held in April 1998. Gavin Stamp is the Chairman of the Twentieth Century Society in the UK and he is currently engaged on a book about all aspects of British architecture between the World Wars. Mr Stamp is a regular columnist of the English magazine, "The Spectator".

The National Trust has completed an extensive survey of interwar housing in New South Wales and this seminar is designed to promote an understanding and acceptance of the urban conservation areas which have been identified by that survey.

While some speakers have already been invited, the Trust is keen to invite further potential speakers to contact the Trust with any ideas they may have for suitable topics.

The Seminar will be held on Friday 3 April and Saturday 4 April 1998 at Parliament House, Macquarie Street, Sydney. There will be some site visits around Sydney and possibly a country area.

Please contact Katherine Brooks, Conservation Officer (Ph. 02 9258 0123; Fax. 02 9251 1110; Email. charles@aic.net.au) if you wish to submit a paper or an idea for a paper, or to register your interest in attending the Seminar.

---

## CHRISTMAS COCKTAILS CANCELLED!

Due to the unexpected closure of part of Uriarra & Coppins Crossing Roads for the running of the FAI Car Rally, there will be no access to 'Huntly' on November 29th - the date the Trust had planned its Christmas Cocktail Party.

Unfortunately, relatively short notice was given of this closure and 'Huntly' is not available on any other date. No suitable alternate venue could be found at such short notice. The Trust therefore has no alternative but to cancel this function.

Our apologies to those who were looking forward to attending.

*A gathering to celebrate the solstice is planned in March next year.  
We hope to have your support at that time.*

---



## TRUST OFFICE SERVICES

### Photocopying

The Trust owns an all singing all dancing photocopier.

This machine allows users to save both trees and money with its ability to photocopy both sides of the paper (for example, one double sided A4 sheet costs 20 cents whereas two single sided A4 sheets costs 30 cents). We can copy from books, erase edges and much, much more. Moreover this miracle machine prints on recycled paper.

Members and non-members are welcome to use us as a photocopy service. Charges, which incidentally are some of the cheapest in town, are;

#### Single sided A4

	Up to 10 sheets	Above 10 sheets
Members	15 cents	10 cents
Non-Members	20 cents	15 cents

#### Double sided A4

	Up to 10 sheets	Above 10 sheets
Members	20 cents	15 cents
Non-Members	25 cents	20 cents

#### Single sided A3

	Up to 10 sheets	Above 10 sheets
Members	20 cents	15 cents
Non-Members	25 cents	20 cents

#### Double sided A3

	Up to 10 sheets	Above 10 sheets
Members	25 cents	20 cents
Non-Members	30 cents	25 cents

### Card Laminating

Members	\$2.00
Non-members	\$2.50

### Fax

The National Trust (ACT) has a FAX machine. The number is (02) 6239 5333. Members may use the machine and support the National Trust at the same time.

We charge:

- Incoming correspondence  
20 cents per page.
- Outgoing correspondence—\$2.00  
plus 20 cents per page.

Overseas charges are based on the overseas STD rates.

All pages must be numbered and the machine must be operated by National Trust staff.

## JOINING FEE TO BE INTRODUCED

With effect from 1 January 1998, a joining fee will be imposed upon new members of the National Trust.

The fee is to be \$30, with pensioners and full-time students to be exempted.

YOU ARE INVITED to place small advertisements in "Trust News".

Ads may be up to five lines  
@ \$1/line (or part thereof).

A \$2 non-member surcharge applies.

Ads of 1/8 of a page may now be placed at a rate of \$20 each.

Payment must accompany advertisement.

### TRUST MEMBERS!

- A** Do you value your Trust membership?
- T** Do you want the Trust's essential
- I** heritage preservation work to continue?
- O** Then encourage a friend to join, so
- N** they too can experience the benefits of:
- A** - PARTICIPATION in preserving the
- L** A.C.T.'s cultural and natural heritage.
- FREE** entry to National Trust properties throughout the world.
- R** - DISCOUNTS at National Trust shops.

Preserve our heritage through  
National Trust membership.

Please send this form, with payment, to:  
National Trust of Australia (ACT)  
P.O. Box 3173, Manuka, ACT 2603

## MEMBERSHIP APPLICATION

FULL NAME: Mr/Mrs/Ms/Miss .....

ADDRESS: .....

TELEPHONE: (H) ..... (W) .....

SUBSCRIPTIONS: (Please tick where applicable)

- |  |  |
|--|--|
| <input type="checkbox"/> Household .....\$ 55.00   | <input type="checkbox"/> Single .....\$ 38.00      |
| Seniors Card                                       |  |
| <input type="checkbox"/> - Single .....\$ 33.00    | <input type="checkbox"/> Pensioner/Student         |
| <input type="checkbox"/> - Household .....\$ 45.00 | <input type="checkbox"/> - Single .....\$ 25.00    |
|  | <input type="checkbox"/> - Household .....\$ 40.00 |

Joining Fee (Effective 1 January 1998 - not applicable to full-time students or pensioners) \$ 30.00

TOTAL (Cash/Cheque/B'card/M'card/Visa) ENCLOSED \$ .....

CARD No. .... Signature .....

Expiry Date ..... / ..... • Enquiries, National Trust. ph. (02) 6239 5222; fax. (02) 6239 5333 •



## TRUST COMMENTS ON THE MUSEUM PLAN FOR ACTON PENINSULA

*The Trust's Heritage Issues Sub-Committee met recently and discussed the proposed design for the National Museum of Australia and the Australian Institute of Aboriginal and Torres Strait Islander Studies. Their comments, forwarded to the Parliamentary Standing Committee on Public Works are reproduced below.*

In principle the Trust supports the proposed design plan. There are, however, a number of details which the Trust urges be taken into consideration in subsequent detailed planing and design. These are mainly to do with protection of tree plantings of heritage and urban landscape significance. It is not clear from the sketch design which historic plantings are to be protected and incorporated into the design layout. The comments are also made in the light of current community concerns in Canberra for the protection of the city's trees. It is clear from media reports and comments on development proposals that many in the community are not in a mood to see destruction of the city's trees.

In making the comments the Trust is also mindful of the analysis of trees on the museum site, their heritage significance and condition, by Dr Robert Boden. It is of some concern that this analysis is not referred to in the DOCA report, although it is acknowledged that the winning design has a strong landscape ethos. Dr Boden's report identifies four significant periods of tree growth or planting, namely the two remaining eucalypts dating from pre-European contact; Charles Weston plantings including the elms and white poplars along the old Lennox Crossing track; plantings from the period when Professor Lindsay Pryor was Superintendent of Parks; and the lakeside plantings of (Professor) Richard Clough when he directed landscape architecture for the former NCDC.

It is not possible from the plan of the museum to see how and where these historic plantings are protected and conserved and incorporated into the design. Whilst this may be a question of future detailed consideration, the Trust regards it essential that a statement be issued indicating the intention to protect these trees within the design layout. Some of the plantings by Weston and Pryor are roughly within the zones shown as tree masses. They need to be fully identified and conserved as part of the city's essential heritage.

The design has one major design weakness and that is its address to Lake Burley Griffin on its southern edge. Figuratively and effectively it turns its back on the water leaving only a minimum strip of land between the building and water's edge. This is contrary to the established landscape planning pattern of national buildings around the Lake and the ethos of Canberra's landscape planning. Further, the existing poplars at the lake edge at this point are part of the landscape planning of Richard Clough who was instrumental in the planning and construction of the lake when it was under threat of not proceeding. These trees form a significant element in, and component of, Canberra's symbolic setting. They are an important aspect of Canberra's development history. No cogent argument or design reason has been put forward for the minimal landscape treatment and for such a bleak lakeside landscape edge. One of the loved aspects of Canberra is its lakeside soft landscape and tree planting. It is a design precept of Canberra that has community support. It is inappropriate for the Museum to break with this tradition. Indeed, it should lead by cherishing it.

It is our view that the proposed bog or marsh garden consisting of a series of wire gabion islands on the western shore will be a major maintenance problem. They will form a trap for debris. In summer when water temperatures reach 25 degrees Centigrade, blue green algae blooms will be trapped and cause unpleasant odours and surface scum.

On site are the stone remains of Moore's Acton cottage. This was the first European dwelling on the Limestone Plains. They are incorporated into a fountain at Sylvia Curley House and classified by the Trust. It is not proposed that the fountain remain intact, but that the stones be incorporated into a structure with commemorative plate. They should not be allowed to disappear.

A feature of the design is the pedestrian bridge across the Lake. This is not essential to the functioning or success of the Museum. Physically it will restrict sailing and visually interrupt the enjoyment of this stretch of the Lake. The Trust strongly urges that it be eliminated from any further consideration.



Children  
enjoying  
games at  
Lanyon  
(see p.24)



## WHAT'S ON, IN AND AROUND CANBERRA

### NATIONAL TRUST (ACT)

- ❖ AGM - 27 November 1997  
Eastlake Football Club
  - ❖ Friday, 5 December, 12.30  
Volunteers' Christmas luncheon & presentation
- Contact number for A.C.T. Trust activities—(02) 6239 5222

### OLD PARLIAMENT HOUSE

- ❖ Prime Ministers on Prime Ministers Lecture Series
  - ❖ Bringing the House Down II
- Contact OPH on 6270 8222 for details.

### AUSTRALIAN WAR MEMORIAL

- ❖ Sundays 23 November & 7 December, 2pm  
Musical performances on the Memorial's grounds.
- ❖ Saturday 22 November, 2.30  
The Four HMASSydneys' - talk by Graeme Beveridge.
- ❖ Saturday 29 November, 2.30pm  
'Middleton VC' —talk by Jason Ryan.
- ❖ Sunday 30 November, 2.30pm  
Meet the author of the book 'Tarakan', Dr Peter Stanley

This programme of talks and walks continues throughout December and there are activities for children throughout January. Phone the Memorial on 6241 8949 for details.

### OTHER

- ❖ Hotel Kurrajong  
Sunday luncheons with guest speakers commencing 17 August. Ph 6234 4444

## WHAT'S ON—TRUST ACTIVITIES

### MEETINGS IN THE TRUST BOARDROOM

- Council Meeting at 6.00 p.m.  
Thursday 20 November
- Publications Committee at 12.30 p.m.  
Thursday 20 November
- Education & Cultural Committee at 5.30 p.m.  
Wednesday 10 December
- Classification Committee at 12.30 p.m.  
Tuesday 11 November
- Lanyon Committee at 12.15 p.m.  
Tuesday 18 November
- Antique Fair Committee at 9.30 a.m.  
To be advised

### ACTIVITIES PROGRAM

The Trust offers a wide range of activities for its members. Participating is a great way to meet new people and gain new experiences, so please take the time to peruse the list below and join in the activities that interest you.

#### AGM

Thursday, 27 November, 7.30pm, Players Room, Eastlake Football Club

**Volunteers Christmas Party at Trust office**  
5 December 1997, 12.30

### CHILDREN'S WEEK PICNIC

The National Trust recently organised a picnic in conjunction with the ACT Museums & Galleries Unit to celebrate "Children's Week" at Lanyon. The picnic was attended by over 85 children from local childcare centres. The children experienced life at Lanyon in the early days, participating in activities such as spinning, see saw, marbles, jacks, drop the hankie, and shepherdess and wolf. They also met some of the residents including sheep, cows with calves and a couple of bulls which created a great deal of excitement.

I would like to acknowledge the great work from the Volunteers who generously gave their time and energy to the day. Many thanks to Mr Fred Roberts, Ms Mardi Roberts, Mrs Ellen Gibbon, Mr Ben Bairstow, Mrs Dorothy Bairstow, Ms Rhonda Arnall and Mr Bob Akhurst. Many thanks also go to the staff at Lanyon, especially Mrs Caroline Nott for sharing her love of spinning with all of the children and patiently responding to all of their questions, and Ms Lisa De Santis who provided a guiding hand and a great wealth of experience.

Without the assistance of these wonderful people, this event would not have been such a success. I am sure that all of those who were at Lanyon on the Day enjoyed themselves and gained much from the reflection and sharing experiences.

*Helen Peade*

### Advertising Rates Increase

With effect from the February 1997 our advertising rates will have to rise.

The rates currently charged do not cover the cost of printing, and the Trust must make running ads cost effective. In recognition of the difficulties faced by non-profit community groups, those in these categories will be eligible for a discount on our advertised rates as set out below.

1 page \$125	1/2 page \$65
1/4 page \$35	1/8 page \$20

Inserts \$85

