



# TRUST NEWS

File Copy  
Do Not Remove

THE NATIONAL TRUST OF AUSTRALIA (ACT)

6 Geils Court  
Deakin ACT 2600

AUGUST 1992

## MEETINGS IN THE TRUST BOARDROOM

### Wednesday 26 August

Education and Cultural  
Committee Meeting at 5.30 pm.

### Monday 31 August

Fund Raising Committee  
Meeting at 5.30 pm.

### Thursday 3 September

Executive Meeting at 5.30 pm.

### Tuesday 8 September

Classification Committee  
Meeting at 12.30 pm.

### Wednesday 16 September

Lanyon Committee Meeting at  
12.15 pm.

### Thursday 1 October

Council Meeting at 5.30 pm.

This edition of Trust News has  
been typeset by *Ingenious  
Software* 35 Carlile Street, Evatt,  
ACT. Ph: 2584858, Fax: 2585737

## EDITORIAL

**Volunteer**, *n.* a person who does some act or enters into a transaction without being under any legal obligation to do so and without being promised any remuneration for their services.

The ACT branch of the National Trust is described, in its mission statement, as a 'voluntary, community-based organisation'. An organisation almost entirely run by an army of approximately 300 volunteers. The Trust would not exist if it were not for the members who every day, week or month volunteer their time, resources and services to Trust activities. It is to these people that this edition of Trust News is dedicated.

In fact, so vital are the volunteer members of the Trust in the running of our organisation that a 'Salute to Volunteers' will become a regular feature of the newsletter with one volunteer recognised in each edition. If you have any recommendations of volunteers for the next edition of Trust news, write a letter and let me know.

In other news, the Classification Committee has had some significant victories in that four properties they listed for classification have been entered into the Register of the National Estate. This is wonderful news. It is these victories that motivate everything we do at the Trust.

Cheers,

*Luisa Megale*



*St. Paul's Church, Manuka, recently classified by the Trust  
(see Classification Update, p.10)*

PO Box 3173  
Manuka ACT 2603

ISSN 0727-9019

Telephone (06) 281 0711  
Fax (06) 285 3327

Registered by Australia Post Publication No. NBH 2120



---

## TITBITS

(formerly Tidbits, name changed in deference to Harry Trowbridge—see letters)

**National Trust of Australia (ACT) presents:**

### **A TOUR OF THE NATIONAL MUSEUM REPOSITORY, MITCHELL**

2 September, 1992

This is a special tour organised for members of the Trust; a "freebie", maximum number 25 so book early. Bookings at the Trust Office or phone 281 0711.

### **NATIONAL TRUST SLIDE PRESENTATION**

September 17, 1992

Senior Citizens Club, Phillip. 7.30 p.m.

Travel through the United States of America, relive those holiday memories or make plans for new ones.

Admission Charges: Adult \$5.00, Concession \$2.50.

Bookings at the door or phone: 281 0711

### **AN INTERNATIONAL EXHIBITION OF TABLE SETTINGS,**

September 25-27, 1992

An international exhibition of traditional and/or festive table settings representing approximately 10 different cultures. Proceeds from the event will benefit the National Trust and the Conservation appeal for St John's Church, Reid.

Official opening: Friday 25 at 6.00pm, to be combined with a New Members evening, entrance by donation. Exhibition hours: Sat 10.00 a.m.—5.00 p.m., Sun. 11.00 am—4.00 pm.

Admission Charges: Adult \$4.00, Concession \$2.00

### **INTO THE WILDERNESS**

30 September 1992.

Slide Evening about the Kimberleys, the South East forests, Kakadu and Tasmania. Trust office 7.30pm. Admission \$2.00

### **BLUE MOUNTAINS IN THE SPRING.**

Friday 9 to Sunday 11 October

Details and a booking sheet are elsewhere in this edition of Trust News.

### **CROOKWELL GARDEN TOUR**

Sunday 8 November.

Once again, details and a booking sheet are elsewhere in this edition of Trust News.

### **Canberra and District Historical Society ANNUAL GENERAL MEETING**

September 8, 1992. 8.00pm

No.1 Meeting Room, Griffin Centre, Canberra City

### **NATIONAL BOTANIC GARDENS "SPRING FLING"**

10 & 11 October 1992

An opportunity to visit areas of the gardens not normally open to the public and to view displays by community organizations with philosophies sympathetic to those of the Botanic Gardens.

Admission free. Open 9.00 am—5.00 pm both days.

### **The Goulburn Garden Club is holding a "HIGH COUNTRY GARDEN SCHOOL"**

Saturday 17th and Sunday 18th October at The Old Goulburn Brewery Hotel.

Cost per person: \$75 for the two days, \$55 Saturday only, \$25 Sunday only. It looks like a very useful conference for Canberra gardeners. For information contact Mrs F Reynolds, Somerton, Lake Bathurst, NSW 2580 Ph. (048) 494444.

Australian National Gallery presents:

### **THE AGE OF ANGKOR: TREASURES FROM THE NATIONAL MUSEUM OF CAMBODIA**

August 22 to October 25, 1992

To celebrate the historic peace accord in Cambodia, the ANG is hosting an exhibition of major Khmer sculptures from the National Museum in Phnom Penh. The thirty-five stone and bronze works included in The Age of Angkor exhibition have never before left Cambodia.

Exhibition Hours: 10.00 a.m.—5.00 p.m. daily

Admission Charges: Adult \$6.00, Concession \$3.00

---

## LETTERS TO THE EDITOR

In the last edition of the Trust News I called for feedback from Trust members on the style and content of the newsletter. It was gratifying to receive a number of letters. The initial response to the letters to the editor has been heart warming. More letters would be wonderful! In order to improve the standard of the Trust News, we must know what our members like and dislike about it. So please, if you could spare a few moments to write down your thoughts, the effort will be appreciated. Below are a couple of examples. (Some members have asked for their letters not to be published.)

### A Warm Welcome

*Congratulations to Luisa Megale on an excellent Trust News.*

Stephen and Susan Bailey  
July 1

### Titbit VS Tidbit

*I learnt something today after reading the Editorial for the May/June issue of Trust News - viz that 'tidbit' is another form of the word 'titbit' and has been so at least since 1934.*

*Whilst the author may have been inspired to make us do some thinking I would like to express my preference for 'titbit'. Apparently 'titbit' is of Scandinavian origin, probably meaning anything small. A more modern interpretation is a 'dainty and delicate morsel'.*

*I look forward to future editorials being 'dainty and delicate morsels'.*

Harry Trowbridge  
July 8

---

## NOTICE TO MEMBERS—ELECTION OF COUNCILLORS

Articles 49 and 50 of the Trust's Articles of Association require that one half of the elected members of the Council must retire at the annual general meeting every two years. The Councillors who retire are eligible to stand for re-election.

This year is an election year and the Trust will hold an election at the Annual General Meeting on Thursday, 18 November. The following members of the Council will retire but are eligible for re-nomination if they so wish:

Associate Professor Ken Taylor—President  
Mr Shibu Dutta  
Mr Ken Rowsell  
Mrs Karen Lochhead  
Mr Tony Hayward

Article 36 of the Articles of Association covers the election of members of Council and requires that:

- ❖ each candidate for membership of the Council must be a member of the Trust and must be nominated by two members;
- ❖ the names of all candidates, together with the names of their nominators, must reach the Honorary Secretary at least one month before the Annual General Meeting;
- ❖ each nomination must be accompanied by the consent in writing of the candidate, or such other evidence of consent as may be accepted by the Honorary Secretary.

Nomination forms are available from the Trust office.

---

## A DIRE WARNING

**Membership of the Trust runs from July 1 to 30 June. At closing time for this Trust News, only 730 of our 1200 members had renewed their subscriptions for 1992/93.**

**Does this mean that 470 of our members have decided they don't love us any more, or it is just that (as in previous years) they haven't got around to it yet?**

**If this applies to you, we have to warn you that, unfortunately, one inevitable outcome is that we will be compelled to cut you from the mailing list fairly soon since the Trust can't afford to keep sending out Trust News without some income towards publishing and posting costs. We don't want to lose you but.....**

---



---

## NEW MEMBERS

The National Trust of Australia (ACT) extends a very warm welcome to the following new members. If any of our current members know these new members, perhaps you could encourage them to attend one of our activities.

Mrs L Ayliffe, Fraser  
Mrs H Horscroft, Aranda  
Mrs L Baker, Red Hill  
Mrs L Hutchings, Farrer  
Ms L Bell-Rowe, O'Connor  
Mr G Knox, Curtin  
Mr & Mrs D Body, Chapman  
Mr & Mrs M Lee, Garran  
Mr & Mrs N Brennan, O'Connor  
Mrs M Matters, Braddon  
Mr & Mrs Brown, Waramanga  
Ms H McLagan, Narrabundah  
Mr & Mrs B Campton, Duffy  
Mr & Mrs J Morey, Farrer  
Mr & Mrs R Cater, Red Hill  
Mr & Mrs D Mullen, Curtin  
Mr J Chappell, Narrabundah

V Norfolk, Woden  
Mrs H Clark, Deakin  
Mr & Mrs R Osborn, Yarralumla  
Ms H Cooke, Tuggeranong  
Ms W Otway-Smith  
Mr & Mrs G Crocket, Yarralumla  
M Parma, Woden  
Mr S Englund, Chapman  
Mr G Quayle, Holt  
Dr K Frawley, Canberra  
Mr & Mrs B Sharp, Hughes  
Mrs A Gugler, Mawson  
Mr J Spooner, Champman  
Mrs C Guster, Pearce  
Mr & Mrs D Thomas, Hackett  
Mrs E Hancock, Belfield  
Mr J Walsh, MacGregor  
Mr & Mrs T Harrison, Red Hill  
Mr & Mrs R Welbourn, Deakin  
Miss L Hemetsberger, Pearce  
Mrs A Worster, Florey  
Mrs P Hemetsberger, Pearce

---

## YOUNG NATIONAL TRUST MEMBERSHIP

The National Trust's commitment to the preservation of sites of historical interest is based on a simple premise—the conservation of national heritage for future generations. Today, young people are just as concerned about the preservation of natural and built historical treasures as their elders. The threat of so called "urban renewal" and global warming are looming in their future. An organisation such as the National Trust is a perfect outlet for young people to concentrate their energies, yet less than 20 per cent of National Trust members are under forty-five.

In order to simulate broader interest, many branches of the National Trust have, in addition to regular membership, a youth membership scheme known as the Young Trust. The philosophy of the Young Trust is to encourage and maintain membership at an earlier age (18) and to allow a wider range of activities in the National Trust programme. The ACT Trust used to have a very active Young Trust group, which organised quite a wide spectrum of activities and events, ranging from bush walks and wilderness

treks to group theatre bookings. In fact, the annual Melbourne Cup Luncheon at Huntly was initiated by the Young Trust.

Our Young Trust group is in abeyance and we would like to re-activate it. But we need to know whether the members are interested, how many and whether there will be a core of people interested in organising a Young Trust committee. The usual age criteria for Young Trust membership applied in other States is anyone between the ages of 18 to 35, but we aren't necessarily so rigid, although the ability to think young is a must. So anyone who is interested and would like to help out with ideas can contact the Trust Office on 281 0711. The future of the National Trust lies in youth.

---

## SALUTE TO VOLUNTEERS

### MRS JEAN ROBERTSON

Jean Robertson's association with the National Trust of Australia spans almost two decades. During this time Mrs Robertson has made a substantial contribution to the running of the Trust, both in the ACT and Victoria, with particular emphasis on the running of the gift store at both branches.

Mrs Robertson moved to Canberra approximately 15 years ago from South Yarra in Victoria. She was invited by Lady Alison Hay, the then President of the National Trust (ACT), to manage the Trust's gift shop as she had experience in the Jackson St, Toorak, store in Victoria. Mrs Robertson took up the invitation, but what a challenge it presented. The gift shop (a misnomer by any stretch of the imagination) was little more than shelf space in the Trust office. Under Mrs Robertson's careful guidance, the shop moved premises several times until finally finding a comfortable niche in the Style Arcade Manuka where it can still be found today.

Every Wednesday Mrs Robertson is in the store where sales representatives from various companies call with their samples. Purchased goods have to be unpacked, priced, attractively packaged and distributed to the shops. Mrs Robertson also attends the store on Fridays where she cleans, displays and attends to shoppers. Each year Mrs Robertson travels to Melbourne and Sydney to National Trust shop meetings and trade fairs to buy stock for the shop.

The shops at Manuka and Lanyon are a credit to Mrs Robertson and all of the other volunteers who run the shops. In the last audited financial year, the Mankua shop returned a healthy profit. However the shop serves a more significant function than just a profit-making venture. It is the public face of the Trust, a point of contact between the public and the Trust. It is for this reason that Mrs Robertson's contribution to the shop is so significant. Even in a recession Mrs Robertson has retained the dignity of the shop by emphasising quality and style at a reasonable price.

Mrs Robertson herself is a lady of quality and style. Her ability to organise the shop, plan future stock and maintain high standards of service is a job which could earn her thousands of dollars annually in another retail outlet. Yet Mrs Robertson donates her time and services voluntarily. This year, in recognition of her outstanding contribution to the Trust, Mrs Robertson was awarded a National Trust Certificate of Commendation, only the second to be awarded by the ACT Trust.

### MRS DOROTHY AND MR LES MOORE

At the National Trust our ethos is one of quiet achievement. We usually do not chain ourselves to trees or march in the streets. We simply get on with our mission of preserving Australia's natural and built heritage. We don't seek fame, glory or notoriety. We are the doers, the quiet achievers.

Amongst our membership we have remarkable quiet achievers in the form of Dorothy and Les Moore. Mrs Moore is one of the ACT Trust's founding members and has been actively participating in Trust activities in one form or another since then. Initially, the ACT Trust was little more than a women's committee (of which Mrs Moore was chairperson), which raised money for the NSW Trust. However, due to a legal technicality, the "ACT Trust" was unable to continue in this fashion. A decision was made to become autonomous and on December 15, 1976, the formal incorporation of the Trust was signed by Mrs Moore amongst others.

From that time Mrs Moore, and since his retirement, Mr Les Moore, have been actively involved in the Education and Cultural Committee (which incidentally was founded by Mrs Moore), the Antique Fair Committee and general Trust activities.

Mrs Moore's dedication to the Trust has been motivated by a personal sense of satisfaction. In the same way in which a gardener watches a seedling grow and flourish, Mrs Moore has watched the ACT chapter of the National Trust mature and expand. Although, due to health considerations, Mrs Moore's participation in Trust activities has lessened in number, it has not lessened in enthusiasm and interest. Always ones to volunteer, Mrs Moore and husband Les are truly quiet achievers.

### ATTENTION ALL EX-TELOPEA PARK SCHOOL STUDENTS

Many people will have seen the article in the *Canberra Times* about a month ago regarding a large painting which is hanging at Telopea Park School. The school is still trying to find out who painted it (the signature is illegible) and the story behind it. It is obviously the work of a professional artist and was first hung in the school in the 1940's.

So far, its origin remains a mystery (despite the article in the *Canberra Times*, no one has come forward with the necessary story). Do we have anyone in the Trust who is an ex-Telopea Park student of the 1940's and who might be able to throw a little light on the mystery?



## HISTORY LESSONS BEGIN TO PAY FOR CANBERRA SCHOOL STUDENTS

Your Trust helped to put smiles on the faces of a group of Canberra school-children earlier this month when the winners of the 1992 Mugga Mugga Memorial Prize received their awards of cash prizes and merit certificates from Bill Wood, ACT Minister for Education and the Arts, at the award ceremony on Tuesday, August 4. The ceremony took place at the Trust office and was attended by parents, teachers, the Trust council, representatives of the sponsoring organisations and the news media.

In its second year, the Prize is designed to encourage young people to discover their past and historical environment through an exploration of the lives and achievements of pioneers in the Canberra region. William Farrer, Miles Franklin, Robert Campbell and George Blundell proved to be popular choices with the students.

To tell their stories, students used a wide variety of descriptive techniques including photos, drawings and maps. Some showed they had mastered the marvels of modern computerisation in producing their essays, booklets, brochures and wall displays.

Winners in the primary division include:

1st Prize- \$60: Jane Searle (10), Farrer Primary School  
2nd Prize- \$30: Jason Stewart (10), Farrer Primary School  
3rd Prize- \$20: Saminder Sidhu (10), Farrer Primary School

Certificates of merit were awarded to: Thomas Hanna, Damien Hollingsworth and Lindsay Wadsworth, all of Farrer Primary School.

Winners in the secondary division include:

1st Prize- \$100: Mathias Schmidt (14) and Nathan Strong (14), Telopea Park School  
2nd Prize- \$50: Stephanie Day (13) St Clare's  
3rd Prize- \$30: Luke Mosse (13) Campbell High School

Certificates of merit were awarded to: Kate Branford, Fiona Garnock and Conan Brownbill, all of Campbell High School.

The award was sponsored by Miss Sylvia Curley and the National Trust (ACT) in conjunction with the ACT History Teachers Association and the ACT Social Education Teachers Association.

### ONE TO PONDER...

Questions asked of passers-by by young people at a recent demonstration aimed at saving a Heritage-listed building:

**"Do you travel or have you travelled overseas?"**

**-if the answer was yes:**

**"What do you/did you go to look at when you were overseas?"**

**-the most common answers were: historic buildings and sites, churches, national parks, ..... i.e. the heritage of the countries they were visiting.**

**The next question was:**

**"Then why are you letting your own local heritage be destroyed?"**

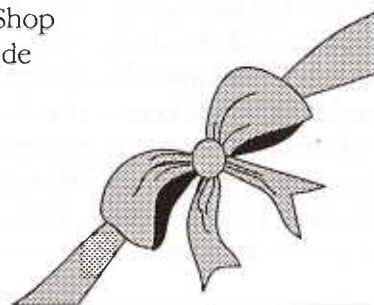
## PRODUCT NEWS—GIFT SHOPS

The National Trust gift shops at Manuka and Lanyon are constantly updating their stock. The latest additions to the shelves include:

- ❖ National Trust Bridge Scorers (Pack of 4) \$13. (Pack of 1) \$3
- ❖ Double pack of playing cards \$22
- ❖ Berryfarm (homemade) Raspberry Jam \$4.50 (Berryfarm recently won an award for their jams at the Royal Easter Show)
- ❖ Our Inter-War Houses, a fascinating Victorian Trust publication by Bryce Rayworth (See Book Reviews)
- ❖ Some very handsome new "National Trust" pens \$7.20.

National Trust Gift Shop  
1st Floor, Style Arcade  
MANUKA

Lanyon Homestead  
Tharwa Drive  
THARWA



---

## INTERNATIONAL EXHIBITION OF TRADITIONAL OR FESTIVE TABLE SETTINGS

For the second time, as part of our contribution to Floriade, the Trust is holding the International Exhibition of Traditional or Festive Table Settings. This Exhibition was very popular last year and we are hoping that it will be even more so this time around.

We've had a change of venue - moving to the St John's Church Hall, Reid, much closer to the rest of the action around Floriade - and we've joined forces with the St John's Church Restoration Fund. There will be some of the same exhibitors as last year (although the displays will be different) and quite a few new ones. There will also be a display of the Trust's Heritage China set.

Why not put a note in your diary to drop in to the Exhibition while you are seeing the sights of Floriade. It will, in any case, be just the place to get that desperately needed cup of tea after you have been walking around Commonwealth Park admiring the tulips.

The official opening will be on the evening of Friday 25 September and will be combined with a New Members Night. Entry by donation, but please book with the Trust office so we know numbers for catering.

The Exhibition will be open from 10.00 am to 5.00 pm on Saturday 26 and 11.00 am to 4.00 pm on Sunday 27 and the entry charge will be \$4, or \$2 for concessions.

---

### The August Investments Managed Trust

**Do your investments  
*undermine*  
your good intentions?**



The August Investments Managed Trust is Australia's first public unit trust to incorporate an ethical charter into its Trust Deed. It offers skilled and conservative investment management in tune with your social and environmental concerns. It also offers an income donation facility; allowing you to invest a sum with its earnings directed to The National Trust, until you need to draw upon it.

The unitholders' newsletter, "*AIM high*", lists all the Trust's investments and the ethical basis for their selection. We would be glad to send you a copy upon request.

And, if you would like to know more, please ask us for a copy of our lodged and registered prospectus dated 16th March 1992, which details all that an investor would want to know, or ask an investment advisor who understands your ethical concerns.

The August Investments Managed Trust,  
Suite 66, Canberra Business Centre, Bradfield Street, Downer ACT 2602.  
Telephone: (06) 242 1988. Facsimile: (06) 241 5284.

*for investors, society and the environment*



---

## NEWS FROM LANYON AND CALTHORPES' HOUSE

Those brave visitors who venture out to Lanyon on a cold day are often surprised to find the house relatively warm. By lighting fires in the parlour or the station office, the house seems alive and welcoming. Winter is actually a good time to visit the homestead, garden and outbuildings because it is much less crowded than the warmer months, and the guides are able to spend more time with each group. It is also a perfect time to join one of our landscape walks.

Our school visits are proving to be very successful because they are tailored to specific needs of the ACT curriculum, and form part of ongoing units of work. Keeping ninety primary school children interested and occupied on a museum site for up to four hours takes a great deal of preparation and organisation. However, the combination of focussed tours of the homestead and buildings, walks to the paddocks and workers cottages, and participation in "hands on" activities such as butter churning, give children a real understanding of the complexities of life in pioneering communities.

The Lanyon guardians make an extremely valuable contribution to the way in which the homestead operates, and their dedication and enthusiasm is very much appreciated. The attendance at the last guardian training session was excellent. Of course there is always room on the roster for more helpers, and as we are planning regular walks to parts of the property not usually accessible to visitors, it would be good to hear from anyone who would be interested in taking part in these. It would only involve studying some notes, attending one training session, and enjoying walking over sheep, cattle, and horse inhabited terrain in all weathers!

Floriade at Lanyon this year (September 19 to October 18) will be an exciting exhibition and sale of antiques and collectibles—mostly with floral decoration and motifs. It is being organised by Michael and Jillian Jones, formerly of Manuka Antiques, and promises to be something really special. There will also be an accompanying lecture series on topics including chinese porcelain, naturalistic decoration in Lanyon homestead, and floral arrangements in the second half of the nineteenth century.

During Floriade The Nolan Gallery will have an exhibition titled "The Temple of Flora" which will be works of contemporary Australian artists using floral imagery.

Calthorpes' House has new opening hours and a different style of tours at weekends. While bookings are preferred during the week (Tuesday, Wednesday, Thursday, 9.00 to 5.00) on Saturday and Sunday 1.30 to 4.30, visitors can wander through the house at their own pace - either for a quick look, or to spend the whole afternoon! Trained guides and also volunteers from the University of Canberra are on hand to answer questions; parking is available on the property. For those who have not visited this unique 1920s family home, now is a good time to do so!

If you would like further information about any of the Museums Unit's activities or programs, please contact me on either 2072173 or 2375136

Elaine Lawson, Curator, Lanyon and Calthorpes' House, ACT Government.



### "Patricia's Flowers"

Specialising in Olde Worlde Weddings  
*Bridal Bouquets, Church & Reception Flowers*  
*Free Home Consultations*

Private Floral Art Lessons by arrangement  
*Small groups or individual students*  
*Learn flower arranging for gifts and home decoration*

Phone Patricia 231 8261  
*Certificate of Commercial Floristry, ACT*



---

## TECHNOLOGY IN THE GARDEN

Electronics, I have to admit, is something about which I find it hard to become enthusiastic. It's not that I don't marvel at what it (or should it be they) can achieve, it is just that I find it totally beyond my comprehension. Never will I have the slightest idea about how computers compute or faxes fax. All I do know is that without them life would be considerably more difficult.

I sometimes wonder, however, whether, as we become more and more dependent on this modern technology, we are tending to lose sight of some of the simple but useful things that we, or perhaps our parents, once enjoyed.

I started thinking about this the other day as I was sweeping up the autumn leaves, always a major chore in our rather large garden. The modern wheelbarrow is useless for this; even an "industrial strength" model doesn't hold enough, so we pile the leaves on to an old sheet and hump them on our backs to the compost heap. That's fine when the leaves are dry, but hard work when they are wet. But once upon a time—and you will have to allow me a few minutes of nostalgia—wheelbarrows were made of wood, had four right-angled corners, and came with a sort of extension, a wooden frame that fitted on top. This almost doubled their capacity, and was a huge boon when raking up leaves or lawn clippings. Modern wheelbarrows just don't lend themselves to that sort of adaptation.

Then there was the row marker, so simple that I could make one myself—well, almost. In the form of a rake, it had pointed pegs instead of tines and marked out any number of equally spaced and parallel seed rows in one operation. Has anyone seen one recently? What about that supremely simple garden tool, the dibble (or dibber, if you prefer)? You can make one by sharpening the top half of an old spade handle, but last year I was given a really splendid one as a birthday present—polished wood, graduated in inches so that you can make a hole to exactly the required depth. It's so special that I haven't yet brought myself to stick it in the dirt. Who sells dibbles today? And when did you last see a billhook or a bragging hook?

Fortunately, a few of the old stalwarts are still around, like the Haws watering can, now making an awesome comeback. Has anyone with their computer magic designed a better one? I don't think so.

It's good to know that there are still a few things we can't do with the aid of a computer.

TIM NORTH

Courtesy of *The Australian Garden Journal*  
August/September 1992 Vol. 11 No. 5



---

## CLASSIFICATION UPDATE

The National Trust (ACT) has successfully had the following places entered in the Register of the National Estate as of June 1992. Some more victories for the Trust.

### 1. WESTON PARK & YARRALUMLA NURSERY COMPLEX

Yarralumla Peninsula, Lake Burley Griffin.

The area is a mature cultural landscape from the earliest period of Canberra on a peninsula formed with the damming of Lake Burley Griffin. Approximately one third of the area has been intensely developed for recreational use.

**SIGNIFICANCE**—Weston Park exhibits a richness of historic plants significant as individual specimens and as examples of horticultural experiments. The Yarralumla Nursery is significant for its association with the landscape development of Canberra from this site. The site contains *Eucalyptus michaeliana*, a rare species.

Weston Park has association with Walter Burley Griffin, Thomas Weston, Lindsay Pryor, David Shoobridge and Robert Boden; individuals who contributed markedly to the landscape planning and horticultural experimentation generally. Weston Park has a considerable aesthetic appeal with a variety of vistas, colour and form of vegetation and spatial characteristics.

The site provides habitat for a wide variety of birds and possesses groups of trees important for ongoing education and research.

### 2. YARRALUMLA AND SURROUNDS

Section 122, part block 1 & blocks 2-7/121,2/103,1,2&4/119, Dunrossil Drive, Yarralumla.

A stripped Classical style rendered-brick residence for the Governor-General of Australia, mainly built in 1939, incorporating earlier wings and outbuildings.

South wing built for F Campbell in 1891 as an addition to an earlier homestead (demolished 1899), stables designed by E C Manfred completed 1902, additional wings built in 1927, State Rooms and entrance designed by E H Henderson and completed 1939.

Dunrossil Drive provides a long approach to the house and grounds, entered through gates leading to a carriage loop passing under a porte cochere. A

1940's English garden by Edna Walling separates the drive from another path leading around the grounds, in which plantations of trees control views north to Lake Burley Griffin and Black Mountain and south to the Brindabellas.

**SIGNIFICANCE**—Government House is Australia's Vice-Regal residence and has been the scene of official events and ceremonies since 1927. Important qualities are the historic associations inherent in the residence, the landscaping of the grounds and Dunrossil Drive, as well as the aesthetics of the views from the House, the English garden and the stables.

### 3. ST PAUL'S ANGLICAN CHURCH (on Royal Australian Institute of Architects Register as well).

Block 1/39, Canberra Avenue & Captain Cook Crescent, Griffith.

Designed by J B Clamp and Son in 1938, first stage completed 1939, second stage 1963. A brick church in the Interwar Gothic style, with stylised geometric details. There are unusual triangular buttresses, stepped brick window surrounds, diamond-shaped tracery and a tall octagonal lantern on the transept tower. It is sited on a corner balanced around Manuka shopping centre by the Catholic Co-Cathedral.

**SIGNIFICANCE**—St Paul's was the first Anglican church built for the Federal Capital. A building of striking stylised Gothic design, it reveals the architect's earlier association with W B Griffin. The tower in particular is a strong element which adds to the contribution made by the church to the townscape.

### 4. COLVERWELL GRAVES

Glen Burn Creek, Kowen Forest, ACT.

Two amateurishly engraved sandstone headstones located on the west bank of Dirty Swamp Creek, tributary of Glen Burn Creek. The site is surrounded by a post and rail fence and further enclosed by a wire and net fence to protect the graves from sheep.

The stones mark the graves of Margaret and Elizabeth Cloverwell, daughters of Luke Cloverwell, who was probably a stockman for the Styles of Gundaroo. The girls drowned in the adjoining creek in 1837. It is believed that the children's parents, Luke and Mary and another daughter Eliza are also buried in the plot.

**SIGNIFICANCE**—These are the oldest known graves in the ACT marked by headstones.



---

## ADVANCE SALES

### ***"The Heritage of the Australian Capital Territory"***

A joint publication of the National Trust of Australia (ACT) and the Royal Australian Institute of Architects (ACT Chapter) with the assistance of the Australian Heritage Commission

The publication is a description, with illustrations, of all sites within the ACT which have been registered or classified by any of the three participating organisations. It will document Aboriginal, historic and natural sites and will include suggested tours by car, bike and foot. It is expected to have wide local and tourist appeal.

The advance sale price to Trust members and their friends is \$15. The retail sale price will be \$18.

If you are interested in purchasing a copy please fill out the order form in the rear of the newsletter. **For those of you who have already placed an order the book will be launched in Floriade (September 19—October 18).**



Members of the Australian Council of National Trusts (ACNT) and the Executive Officers from all of the Trusts around Australia together with some members of the Council of the W.A. Trust at the Perth meeting of the ACNT in May this year.

The meeting was held in the old Observatory, Perth (the headquarters of the W.A. Trust), a heritage-listed building at the top of a hill which overlooks the city and has been given to the W.A Trust by the West Australian government.

(Wistful Note: every Trust in Australia, except us, has been given their headquarters building by their State/Territory government. We had to build our own—which, of course, means we carry a major burden of debt.)



Licensed  
Cafe  
Restaurant

Open: Mon - Thursday 8.30am - 5.30pm  
Friday 8.30am - 9.00pm  
Saturday 9.00am - 2.30 pm

**Jonathan's . . . Breakfast, morning tea, lunch,  
afternoon tea or Friday evening.  
Fine food and beverages in a  
relaxed sophisticated atmosphere.**

**Jonathan's . . . catering for boardroom meetings,  
executive lunches, office parties,  
dinner parties, cocktail parties, or  
lunch in your own private spot.**

**Jonathan's . . . the ideal setting for a Celebration  
Party.**

Enquiries welcome  
Jonathan's, Mezzanine Level, Woden Plaza

**Telephone 282 5320**

## SLIDE EVENING

Don't forget your opportunity for an armchair tour of heritage listed buildings in the United States, on Thursday 17 September. This is the last in this year's series of Trust tours of National Trust properties overseas and in other parts of Australia.

The series has been a great success, introducing many members and friends of the Trust to historic properties in New Zealand, Canada, NSW, Great Britain and, now, The United States. Some lucky subscribers have gone home with a drinkable door prize from the State/Country which has been featured on the particular night of their attendance. We have a large (1.5 litre) bottle of California Chardonnay to give away on 17 September, courtesy of the United States Embassy.

The narrator for the evening will be Peter Eisenhower of the U S Information Service. Bookings through the Trust Office (phone 281 0711) or pay at the door. The show commences at 7.30 pm at the Woden Senior Citizens Club, Corinna Street, Phillip.

## INTO THE WILDERNESS— BUDGET STYLE

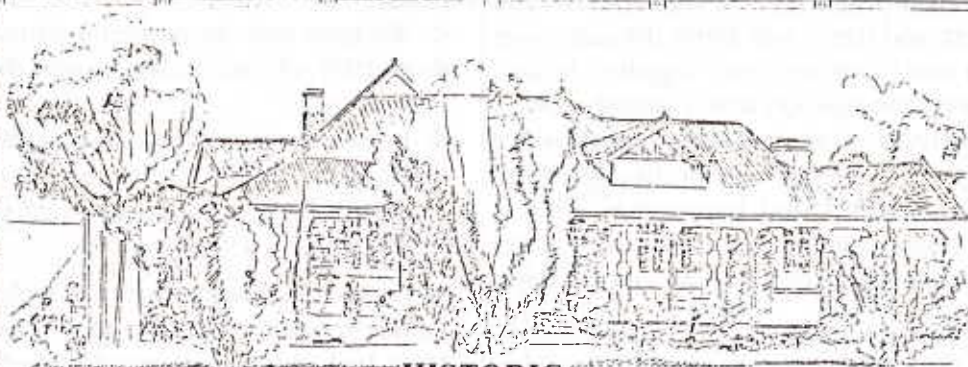
The Wilderness Society has been, for some years, at the forefront of campaigns to protect Australia's natural heritage. As part of their ongoing strategy to increase awareness of our wildernesses the Society is offering members of the Trust the opportunity to experience the spectacle of the Kimberleys, the South East forests, Kadadu and Tasmania, all within the space of an hour or so!

How? By coming to the Trust boardroom on Wednesday, 30 September 1992 at 7.30pm.

The Society has a beautiful set of slides which they have offered to show us free of charge, so it won't be an expensive evening—just \$2 to cover the cost of refreshments.

RVSP to the Trust office by 29 September so that we can organise catering.





## **HISTORIC COUNTRY HOMESTEADS**

### **DAY TRIP**

*This tour provides a rare opportunity to visit and experience homesteads which were built by early settlers in the Young district. These homes have been lived in and loved for many generations and are all in close proximity of one another, which minimises travel and allows time to enjoy the beautiful surroundings, morning tea, a three course lunch and afternoon tea.*

*The day begins with a tour of Moorilla's spacious, much loved garden and granite homestead, built in 1880, with decor in keeping with this period. After enjoying morning tea at Moorilla you then visit Lower Coolegong built at the turn of the century from hand made bricks. You then return to Moorilla where you are served a magnificent three course sit down lunch with wine in an elegant friendly atmosphere, taking you back into the charm and elegance of yesteryear. After lunch you drive past Iandra Castle and then on to Spring Park, a 90 square home built in 1888 of local granite. Here you are served a delicious afternoon tea in the Drawing Room.*

### **LOCATION:**

*Moorilla is a pleasant car drive from Canberra and other major centres, situated midway between Grenfell and Young on the Henry Lawson Way.*

### **TIME:**

Arrive 10.00am  
Depart 5.00pm

### **DATES:**

*Tours are held on any Sunday, however other days of the week may be arranged.*

### **COST:**

20 people and under	\$60 pp
20 plus	\$55 pp

*Minimum bookings of 10 people. Bus groups 10% deposit, no refund if cancelled less than 7 days prior to tour.*

### **BOOKINGS:**

*Please book early to ensure that you can visit on the day of your choice.*

*Call Amanda Fowler (063) 83 6215  
or Helen Lamb (063) 83 4207*



---

## A LETTER FROM THE YASS TRUST

Mike Hodgkin (ACT Trust Administrator) spoke at the Annual General Meeting of the Yass branch of the National Trust and there was some discussion on drawing our two branches closer together. In fact, Mike expressed the opinion that it would make a great deal of sense to more closely align the activities of both Trusts and keep the respective members informed about events and happenings. This is despite the Yass Branch and its property "Cooma Cottage" being governed by the NSW National Trust.

So, with a view to doing this, we (the Yass Trust) plan to keep you posted in future editions of Trust News on our activities—and visa-versa. The Yass Branch puts out a newsletter bi-monthly and copies are available for any interested parties. (Editors note: a copy is always available at the ACT Trust Office)

Of course, one of our most important activities (particularly mine) is the care and operation of Cooma Cottage. Have you visited us yet? If not, why not? It would probably take you just as long to drive to Lanyon from Civic as it would to drive to Cooma Cottage from Civic (I know, I do it all the time). Yes! Yass is not at the end of the earth—it really is quite close.

### A FEW FACTS AND FIGURES RE: COOMA COTTAGE

Did you know that:

- ❖ Hamilton Hume (builder of Cooma Cottage) was our only Australian born explorer.

- ❖ We now have lunch and tearooms at Cooma Cottage.
- ❖ We have only been open 4 years
- ❖ In 1991 we had 11,300 visitors through Cooma Cottage.
- ❖ In 1991 we had 19 separate events and at least as many school visits.
- ❖ and finally, apart from a manager, Cooma Cottage is staffed totally by volunteers.

We would be more than happy to welcome volunteer guides from Canberra. Though our guide roster has been fairly successful, people need a break from guiding occasionally, and their positions need filling. Please think about it and give us a call.

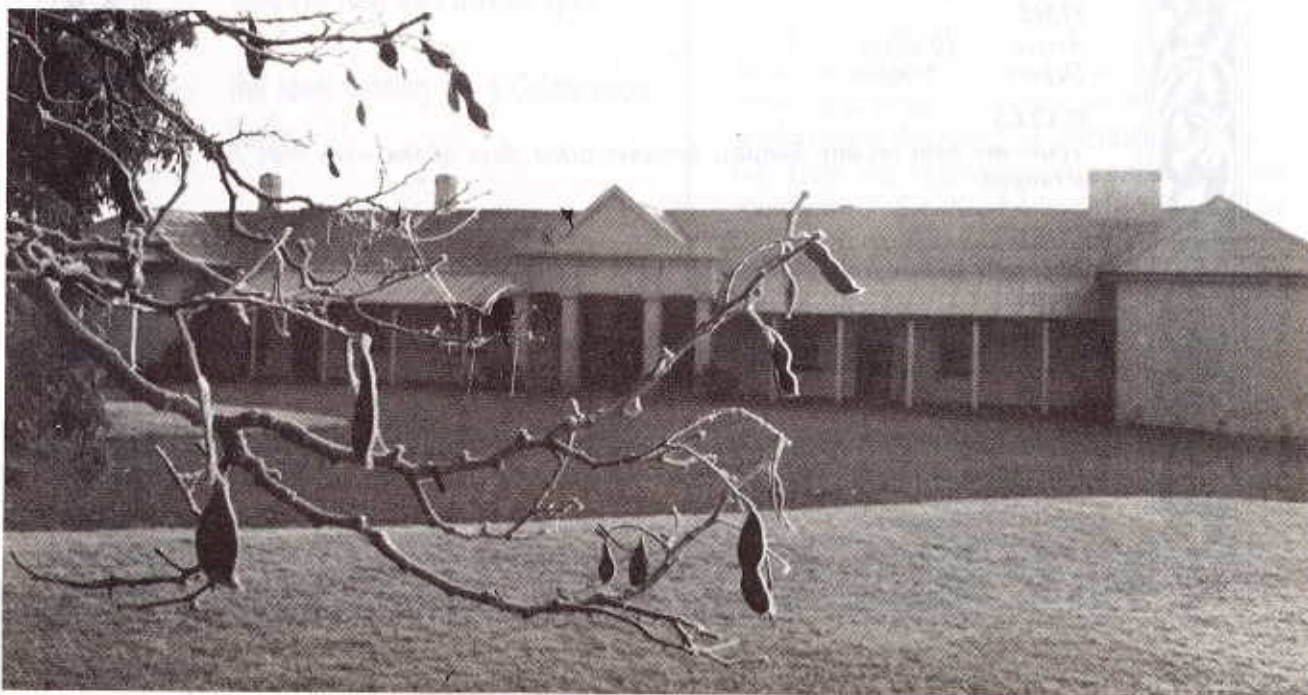
It may interest you to know that the Yass Tourism awards will be held soon and Cooma Cottage has been nominated for excellence in the field of Tourism. I, as manager for the Cottage, and the Tearooms have been nominated for separate awards. Needless to say we are fairly happy to be recognised in this way.

Thanks again to Mike Hodgkin for his excellent lecture at our AGM. It has made us aware of how another branch functions and has given us valuable insight into how we may perceive our future.

Let's not be strangers!

*Kim Nelson*

Manager, Cooma Cottage.



'Misty Morn' - Cooma Cottage



## EVENTS IN YASS

The next event to be staged by the Yass Branch of the Trust, is a performance by world acclaimed composer, Bruce Smeaton. Though you may not recognise the name you have probably listened to his music, time and time again. The film scores of *Seven Little Australians*, *Picnic at Hanging Rock*, *A Town like Alice*, *Evil Angels*, *Roxanne*, just to name a few.

This performance will be held at historic 'Hardwicke' Homestead, adjoining Cooma Cottage at 3pm September 6, 1992. The venue can only seat 80, so please call Cooma Cottage on 226 1470 if you hope to get a ticket. Tickets are \$12.00 (Adults), \$8.00 (Concession).

The next exhibition at Cooma Cottage will be held towards the end of September and will be a dual exercise combining a lithographic exhibition by Dianne Reddon and ceramics display by Fergus Stewart. They will both culminate in a market day on Sunday October 4.

If you are not away on the long weekend we strongly advise you to drop out to the Cottage. Funds raised will go to aid the Handicapped Childrens' Society.

## *Canberra Agents for* **SHERPA EXPEDITIONS**

**NEPAL  
INDIA, AFRICA  
TREKS**

**FIJI  
AMERICA  
ISLANDS**

**247 3899**

EUROPEAN WALKING TOURS

## **HARVEY WORLD TRAVEL (ADVENTURE TRAVEL)**

Cnr Alinga & Marcus Clarke Sts Civic  
Free Slide Night - phone for reservation

1.92/D/1  
#33706

## ON THE EDGE: AUSTRALIA'S COASTLINE

Each year thousands of Canberrans head straight for the coastline for their annual holiday. While enjoying the advantages of coastal living, visitors and even residents, for that matter, forget just how much stress Australia's fragile coastline is under. Geologically and ecologically, Australia's coastal environment is dynamic and complex, with a strong interdependence between its marine and terrestrial (land) components. It includes forests, farmland and urban areas, as well as estuaries, wetlands, cliffs, beaches, bays, inlets and islands. Over 80% of Australia's population lives within the coastal strip, and the population residing here (or visiting) is forecast to grow rapidly.

This has serious implications for the activities which occur in, and impact on, the coastal zone. Already the coast is the focus for many major industrial centres, is the nation's favourite recreational area, and supports commercial fishing industries and oil and gas exploration. Already these activities are exacting their toll. Industrial effluents, sewage, oil spills,

agricultural chemical run-off and over fishing have reduced the diversity and integrity of our coastal ecosystems. In Australia and worldwide, the sea has been viewed as an inexhaustible resource and a limitless dumping ground. The Australian Government is taking some action by appointing a Resource Assessment Commission (RAC) Inquiry into the management of the coastal zone. The Inquiry is taking place over the coming year.

Courtesy of *Conservation News*  
ACF July 1992 Vol.24. No. 3

---

# MAKING MUSIC

---

with

B R U C E S M E A T O N



S E P T E M B E R 6 t h , 1 9 9 2  
3 pm

**Tickets available from  
The Sheeps Back  
or Cooma Cottage**

Spend a casual afternoon with this world renowned composer as he performs for you some of his greatest works and details how they were created. The afternoon will be more than a recital and is a must for both students and lovers of fine music. You are invited to ask questions throughout the performance as the composer shows us how a piece is 'made up'. Bruce Smeaton's knowledge of music technology and styles is without par and he is as comfortable with the latest computer programs and 'midi' systems, as he would be with Mediaeval instruments or Japanese music notation! His list of credits is enormous including films from both the US and Australia. *Roxanne*, *Picnic at Hanging Rock*, *Plenty*, *Seven Little Australians*, *Evil Angels*, *A Town Like Alice*, *Patrol Boat*, *Chant of Jimmy Blacksmith*, *Wendy Cracked a Walnut* — to name some of over 60 film scores he has composed and arranged.

Profits raised will go to aid the National Trust. Bruce Smeaton has requested that his fee be donated to Amnesty International.

**Tickets \$12, Concessions \$8**

To be held at historic 'Hardwicke' adjoining Cooma Cottage

Cnr: Hume & Barton H'ways Yass. Inquiries phone: (06) 226 1470. Please book as seating is limited

---



---

## BOOK REVIEWS

### ***Our Inter-War Houses***

by Bryce Raworth

National Trust of Australia (VIC)

59 pages. Softcover, \$15.00

This attractive and useful guide to identifying and extending our inter-war houses is one product of a larger National Trust study of the inter-war era. The 1920's and 30's were among the major periods of suburban expansion in Australia. It is also one of the most fascinating periods of our suburban development, a period which saw the emergence of the typical Australian suburb with its nature strips, "33 feet" setbacks, and allotments wide enough to accommodate side driveways for the motor car.

The book identifies and describes five domestic styles of the period—Bungalow, Tudor Revival, Spanish Mission, Georgian Revival and Modernistic—together with their fences, gardens, porches, wall surfaces, windows, eaves, roofs, parapets and chimneys. Exterior colours have been researched and a table of period colours with modern equivalents is provided. With the support of Dulux, a specially prepared colour card is also included.

For the first time, the houses of the inter-war period are described in a comprehensive and authoritative manner. With colour photographs and a simple, clear format and style, the book should prove popular to anyone with a general interest in the subject.

Available at the National Trust gift shop, Manuka.

### ***Masterworks of Man and Nature: Preserving Our World Heritage***

endorsed by Dr. M. Holdgate (Director The World Conservation Union)

Harper MacRae. Melbourne, VICTORIA.

448 pages. Hardback, \$39.99 (standard edition), \$120.00 (gilt edged limited edition).

ONLY AVAILABLE THROUGH THE NATIONAL TRUST OR OTHER CONSERVATION ORGANISATIONS.

The World Heritage Committee, a functional body of UNESCO, has produced a spectacular reference book for the World Heritage List. The book includes over 400 excellent colour photographs and dozens of essays and factual data pertaining to the 360 natural and cultural sites Listed throughout 80 nations.

The natural sites on the List include many of our planet's most breathtaking scenic areas and wildlife habitats, while the cultural sites are notable expressions of humanity's achievements, emphasizing the interdependence of what is natural and what is man-made. Not only does *Masterworks* rally the attention of the world community to the urgent need to sustain the work of the World Heritage Convention, but it also allows all purchasers of the book to contribute substantially to the cause of conservation. Proceeds of the book will be divided between UNESCO's World Heritage Fund, The World Conservation Union and distributor (e.g. The National Trust, ACT)

See insert in this edition of *Trust News*

---

## HERITAGE WEEK 1992

Bob Akhurst is the Trust's representative on the ACT Heritage Week Committee and contributed with the other members of that Committee to providing a diverse and successful programme for Heritage Week 1992.

The week has now become a regular and well received part of the Canberra calendar.

Lately the Committee has taken on the wider role of promoting a higher profile for heritage throughout the whole year by participating in other community festivals, such as the Canberra Festival and Floriade.

This year the Committee will combine with the Old Parliament House Management to provide a tour of Old Parliament House and Gardens on Saturday 10 October 1992. Times—11:00am, 1:30pm or 3:00pm. For bookings please ring the Heritage Week Hotline on 2825213. Entry is free and refreshments will be provided.

Trust members are invited to attend.

---

## UPCOMING EVENTS

### TREASURES OF THE NATIONAL MUSEUM OF AUSTRALIA

The National Museum of Australia has generously agreed to allow members of the Trust to tour the Museum Repository at Mitchell on Wednesday 2 September at 4.30pm for about 1 hour.

The 4.30pm start has been selected to allow participants to come from work without too much inconvenience.

The tour, courtesy of the Education and Cultural Committee, is FREE but limited to a maximum of 25 persons; so grab the opportunity NOW—phone the Trust office on 2810711 to book.

We haven't arranged anything for after the tour, but perhaps participants might like to convene for dinner, informally, at some nearby restaurant—we should be able to book on the spot on a Wednesday evening.

### BLUE MOUNTAINS IN THE SPRING.

Afternoon Friday 9 to Sunday 11 October 1992.

Three years have now passed since our first very popular car tour to this area. The forthcoming tour will be by coach and offers a totally different series of gardens.

In order to cater for those who can manage some flexleave, the coach will not depart from the Jolimont Centre until 1.40pm. We will be travelling via Cowra and Bathurst to our overnight accommodation at the Manor House, Mount Victoria. The house was built by John Fairfax in 1876 and has brass beds in all rooms and a number of lovely public rooms.

On the Saturday, we will focus on the best of those gardens being opened for the Leura Spring Festival. These include "Gemas", "Ewanrigg", "Brabourne", "Glenhaven", "Pine Crest" and "Blue Vista". We will also inspect the work being done by the Blue Mountains Branch of the National Trust in restoring the Woodford Academy, the earliest part of which dates back to the late 1840s. Afternoon tea has been arranged at Katoomba's famous Paragon Cafe, which

is classified by the National Trust. So that you may indulge your fancy, the cost of this item is not covered by the ticket price!

On the Sunday, we will start by visiting Mt. York, where Wentworth, Blaxland and Lawson ended their voyage of exploration across the Mountains in 1813. We will then visit the lovely gardens of "Nooroo", "Yengo", "Cherry Cottage" and "Windy Ridge" at Mount Wilson before lunching at the Mount Tomah Botanic Garden. We expect to return to Canberra about 7.00pm after a late afternoon tea at Berrima.

The ticket price includes all travel, accommodation, meal and entry costs, plus afternoon teas on Friday and Sunday. Wine with dinners is extra. All rooms at the Manor House are well appointed and centrally heated but they do not have private facilities. Limit 39.

cost: \$295/person (dbl/tw)  
\$310/person (sgle)

### CROOKWELL GARDEN TOUR

Sunday 8 November 1992.

Relatively few people realise that some of the loveliest gardens in New South Wales are located in the Crookwell district,

This one day coach tour will coincide with the district's Spring Festival and will include visits to the following gardens:

- ❖ "Markdale", an Edna Walling garden, by courtesy of Mr. and Mrs. G Ashton;
- ❖ "Wunulla", by courtesy of Mrs. Nancy Hanson;
- ❖ "Loghren", by courtesy of Mr. and Mrs. Bill Martin;
- ❖ "Gundowringa", by courtesy of Mr. and Mrs. J Prell;

❖ and "Pejar Park", a Beatrice Bligh garden, by courtesy of Mr. Hugh Bligh.

Lunch has been arranged at Willow Vale Mill, a three-storey stone mill at Laggan which dates back to the late 1850s.

The ticket price (\$55 per person) includes travel, a generous lunch and entry charges. Morning and afternoon tea will be on sale at a number of locations in aid of local charities. The coach will depart at about 8.00am, returning at about 6.30pm. Limit 31.



*Valuations—Insurance—Probate*

## *Manuka Antiques*

*Specialist valuers of:*

*Furniture, Ceramics, Silver, Paintings & Objets d'Art*

*Tel: (06) 288 5429*



*A member of the Antique Dealers Association of New South Wales*

### **ECOTOURS.**

The National Trust, through Garth Setchell, has established a liaison with a small Victorian tour operator, Australis Pty Ltd, which offers a selection of tours in Victoria and Tasmania that focus specifically on native flora and fauna. The tour principals are Dr Tony Lee, former professor of zoology at Monash University, and Dr Terry O'Brien, a leading Melbourne botanist.

The tours normally commence from Melbourne, and those ranging from 3 to 4 days cover locations such as the Grampians and Western Victoria Desert Parks, Flinders Island, and the Victorian High Country. Comfortable overnight accommodation, meals and transport are included in the prices which, for the above tours, average about \$160 per day.

Two 7 to 8 day tours cover a broad spectrum of environments in either Victoria or Tasmania, whilst another 7 day tour focuses on the Gippsland wilderness. These tours cost approximately \$1760 (incl 4WD travel), \$2205 (incl air travel) and \$1250 respectively for two in share accommodation.

Departures occur more or less monthly during the appropriate seasons. Interested persons can obtain more information by ringing Garth Setchell (ph. 2514674 between 7.30 and 8.30pm). The National Trust will benefit by way of a commission on sales.

### **TRUST PHOTOCOPYING SERVICE CHARGES**

#### **Up to 10 copies**

Members ... 15 cents each Non Members ... 20 cents each

#### **Above 10 copies**

Members ... 10 cents each Non Members ... 15 cents each

### **NATIONAL TRUST FACSIMILE MACHINE**

The National Trust (ACT) has a FAX machine. The number is (06) 285 3327. Members may use the machine and support the National Trust at the same time.

Costs are:

- Incoming correspondence— \$2.00 plus 20 cents per page.
- Outgoing correspondence— \$2.00 plus 20 cents per page.

STD facsimiles will be calculated on the number of pages and the time taken for the fax to reach its destination (as per telephone book).

All pages must be numbered and the machine must be operated by National Trust staff.

### **TRUST NEWS**

Advertising: enquiries should be directed to the National Trust Office on (06) 281 0711.

#### **Annual Subscription Rates:**

Single .....	\$25.00
Household .....	\$35.00
Students/Pensioners .....	\$10.00

## ACTIVITY APPLICATION FORMS

### BLUE MOUNTAINS IN THE SPRING (9—11 OCTOBER)

Name: Miss/Ms/Mr/Mrs .....

Address: .....

.....Postcode: .....

Telephone: (H) ..... (B) .....

Names of all persons covered by this application. Please indicate preference for group, twin, twin share or single accomodation. Indicate (V) if vegetarian meals are required.

1 .....	2 .....
3 .....	4 .....
5 .....	6 .....

Please send ..... tickets at \$295/person (dbl/tw) \$ .....

Please send ..... tickets at \$310/person (sgle) \$ .....

**TOTAL ENCLOSED** \$ .....

I have enclosed a long, stamped, self-addressed envelope.

### CROOKWELL GARDEN TOUR (8 NOVEMBER)

Name: Miss/Ms/Mr/Mrs .....

Address: .....

.....Postcode: .....

Telephone: (H) ..... (B) .....

Names of all persons covered by this application.

1 .....	2 .....
3 .....	4 .....
5 .....	6 .....

Please send ..... tickets at \$55/person \$ .....

**TOTAL ENCLOSED** \$ .....

I have enclosed a long, stamped, self-addressed envelope.

### ADVANCE ORDER FORM—"The Heritage of the Australian Capital Territory"

Name: Miss/Ms/Mr/Mrs .....

Address: .....

.....Postcode: .....

Telephone: (H) ..... (B) .....

Number of copies .....at \$15 each Total: .....

Note: If postage is required please add \$3.75 per copy Total: .....

Please make cheques payable to: The Publications Committee, National Trust of Australia (ACT)