



# BULLETIN

THE NATIONAL TRUST OF AUSTRALIA (A.C.T.)

The National Trust of Australia (A.C.T.) is a community organisation which seeks to conserve Australia's heritage of historic buildings and natural beauty.

6 GEILS COURT  
DEAKIN A.C.T. 2600  
P.O. BOX 173  
MANUKA, A.C.T. 2603  
TELEPHONE 810711



ISSN 0727-9019 Registered

**File Copy  
Do Not  
Remove**

March  
1988

IT'S ON AGAIN!

## THE CANBERRA ANTIQUE FAIR

The Sixth Canberra Antique Fair is to be held during Canberra Festival Week in our Bicentennial Year. The Fair will be held in the Albert Hall from Friday 18 March to Monday 21 March 1988. The hours of opening are 11am to 6pm each day.

This is the major fund raising activity for the National Trust (ACT) in 1988 and we need volunteers to help:

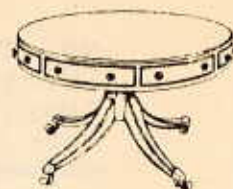
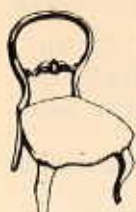
- \* On the Catering Roster
- \* With donations of sandwiches, quiches and biscuits
- \* With donations of flowers to decorate the Hall  
(if you can not deliver them, arrangements can be made to have them picked up)
- \* On the Gift Shop Stall
- \* On the Raffle Stall

If you can help (and we hope that you can), or would like further details, please ring Meredith Ashton at the Trust Office on 810711 as soon as possible.

---

### STOP PRESS: OFFICIAL OPENING ANTIQUE FAIR - 17 MARCH 1988

Their Excellencies have advised that a last minute change to their programme has resulted in the timings for the engagement on 17 March 1988 being changed. The Official Party will now arrive at 6.00pm. Dress will be Lounge Suit.



MEETINGS IN TRUST BOARD ROOM

Wednesday 23 March 1988

Lanyon Committee Meeting

Tuesday 5 April 1988

Fund Raising Committee  
Meeting at 5.30pm

Monday 11 April 1988

Executive Meeting at 5.15pm

Tuesday 12 April 1988

Classification Committee  
Meeting at 12.30pm

Wednesday 27 April 1988

Education and Cultural  
Committee Meeting at 5.30pm

Monday 2 May 1988

Fund Raising Committee  
Meeting at 5.30pm

#####  
COMING EVENTS  
#####

Thursday 17 March 1988

Official Opening by Her  
Excellency Lady Stephen of  
the 1988 Canberra Antique  
Fair, at the Albert Hall at  
6.00pm

Friday 18 - Monday 21 March 1988

1988 Canberra Antique Fair

Saturday 9 April 1988

Last visit to Old  
Parliament House

Saturday 16 April to  
24 April 1988

Heritage Week - activities  
will be advertised in our  
next Bulletin

Saturday 16 April to  
Tuesday 19 April 1988

Albert Hall Exhibition -  
"Canberra's Journey"

Tuesday 19 April 1988

Musicale

Monday 9 May 1988

Founders' Day Dinner

#####

NATIONAL TRUST NSW MAGAZINE

Members are reminded that the National Trust (NSW) Magazine is available from the Trust Office and the Manuka Gift Shop.

There are five issues per year and arrangements can be made with the Trust to post the magazine to members at a cost of \$6.00 p.a.

NB The Trust office also has a limited number of National Trust (Victoria) Magazines. Current copies of the ACNT publication "Heritage Australia" are available at a cost of \$6.95 each and back copies are \$2 each from the National Trust Headquarters.



## OFFICIAL OPENING 1988 CANBERRA ANTIQUE FAIR

The National Trust (ACT) in co-operation with the Antique Dealers' Associations of New South Wales and Victoria, will be presenting the 1988 Canberra Antique Fair at the Albert Hall, Commonwealth Avenue, on Friday 18 to Monday 21 March 1988.

Her Excellency Lady Stephen has consented to be our Guest of Honour on this occasion and to officially open the Canberra Antique Fair at the Albert Hall on Thursday 17 March 1988 at 6.00pm. His Excellency The Governor-General has also been pleased to accept our invitation to attend the Official Opening.

The ticket application form for the Official Opening is included in this Bulletin. The number attending is limited.



### OUR PROVISIONAL PARLIAMENT HOUSE

Saturday 9 April 1988



Opened in 1927, the Provisional Parliament House is one of the very few buildings in Australia that almost every Australian can identify. Yet much of its interior remains unknown to the public.

With the move to the New Parliament House commencing in the middle of the year, this will probably be your only opportunity to inspect, whilst still in use, such relatively original spaces as the Members Dining Room, the Speaker's Suite, the President's Suite and the Government and Opposition Party Rooms. The inspections will also include both Chambers, Kings Hall, the Courtyards and the House of Representatives Garden.

The inspection has been arranged with the generous consent of the Speaker, the Hon Joan Child, MP, and the Senator, the Hon Kerry W Sibraa, President of the Senate.

Because of security requirements and the small size of some spaces, morning and afternoon visits have been arranged and each of these will be further subdivided into sub-groups. Total numbers will be strictly limited and tickets will only be issued to members and their invited guests.

Prompt application is advised as tickets will be issued in order of receipt. If you do not specifically require morning or afternoon, please leave this open.

Each session is identical and each tour will take about 2½ hours, starting at 10.30am or 2pm. Children under 12 not admitted.

Application form included in this Bulletin.

---

## CAN YOU SPARE SOME TIME AT LANYON?

One of the most important roles the National Trust in the ACT plays is to provide Guardians for Lanyon. The Guardians role is to assist in the safe keeping of furniture and furnishings in Lanyon and as their knowledge of Lanyon increases, answer visitors questions. In particular, we need Guardians to be put on an 'emergency only' list. This means you could be called upon for duty at Lanyon with between 24 hours and one or two weeks notice (in the case of a rostered Guardian having to withdraw due to unforeseen circumstances). If you are able to assist, please call the Trust office on 810711. By the way, Guardians do have some special privileges such as the 'Guardian Only' house inspections.



## GIFT SHOP

The ACT National Trust has two Gift Shops in Canberra. One is at the Style Arcade in Manuka, the other is at Lanyon Homestead. Although the shops are small, you will be able to find a wide range of truly desirable gifts.

Not only do both shops cater for the people of Canberra, but are fast becoming favourite calling places for interstate and overseas visitors looking for attractive gifts to take home or to send to friends abroad.

Amongst the innumerable gifts are tea towels, cards, games, and a selection of small souvenirs, many of which are of unique Australian design, and all of which are of high quality at affordable prices. The varied stock of books not only includes the superb National Trust publications, but also many covering cookery, gardening, Australiana and of course books that will fascinate the young.

A small range of popular items from the Gift Shops is also available from the Trust office for the convenience of members.

Remember the ACT National Trust Gift Shops when you are looking for that very special present.

---

## NEW MEMBERS

The National Trust welcomes the following new members to the ACT Trust. If any of our current members know these people, perhaps you could encourage them to attend one of our functions.

Mrs R Cooke, Macquarie  
Mrs E Edwards, Charnwood  
Mrs M Gallagher, Curtin  
Mr & Mrs P Harrington, Weston  
Mr & Mrs L Hingley, Fisher  
Mr & Mrs J Lever, Gowrie  
Mr & Mrs F Roberts, Hughes

Ms M Downes, Kambah  
Ms J Edwards, Dickson  
Mrs G Hamlyn-Harris, Campbell  
Mrs J Haslem, Manuka  
Mr C Johnston, Fisher  
Mrs M O'Donnell, Kingston

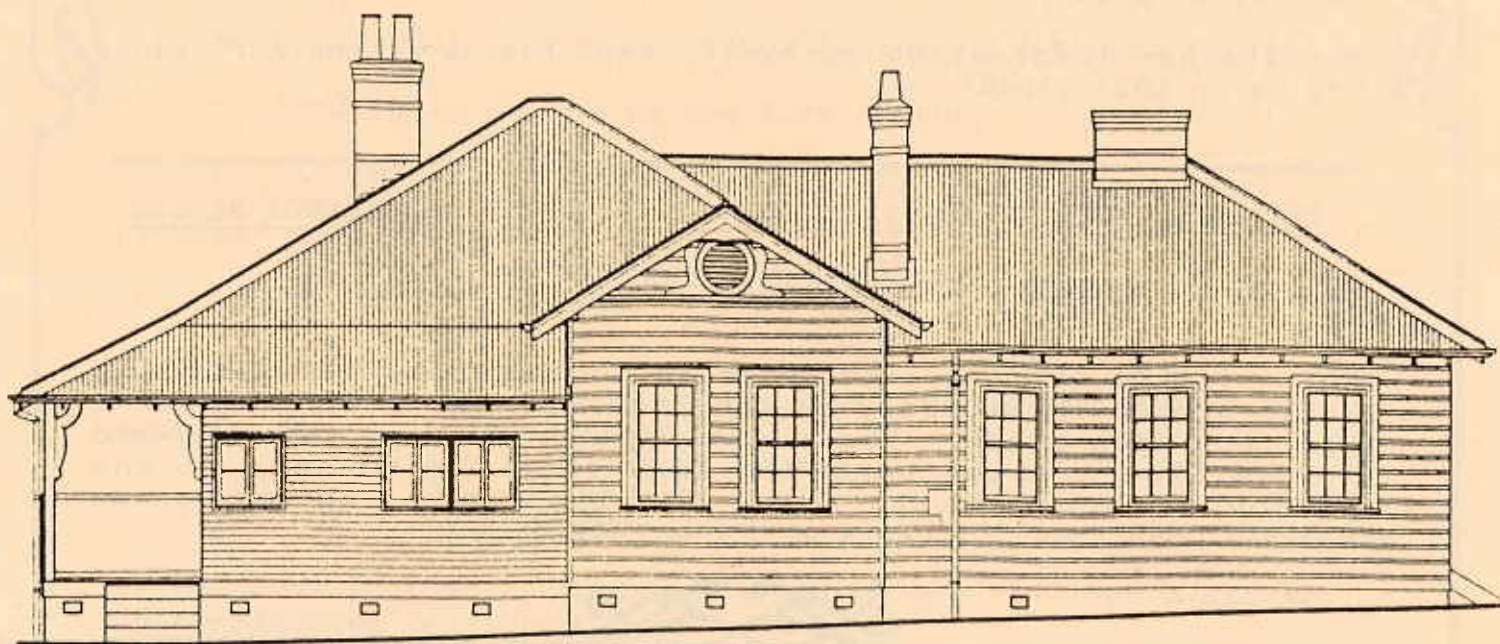
---



MARION MAHONY GRIFFIN

# MEASURED DRAWING COMPETITION 1988

conducted by ROYAL AUSTRALIAN INSTITUTE OF ARCHITECTS (ACT) for ACT HERITAGE COMMITTEE  
sponsored by an HERITAGE GRANT from the DEPARTMENT OF TERRITORIES



NORTH WEST ELEVATION

YOU ARE INVITED TO SUBMIT MEASURED DRAWINGS  
OF A BUILDING OF HISTORICAL SIGNIFICANCE

**\$3000** IN PRIZES PLUS A \$100 HONORARIUM  
FOR EACH ACCEPTABLE ENTRY

REGISTRATION OF ENTRY CLOSES 31 MARCH 1988  
COMPETITION CLOSES 31 JULY 1988

FOR CONDITIONS OF ENTRY AND A LIST OF BUILDINGS TO BE MEASURED  
APPLY TO  
MARION MAHONY GRIFFIN MEASURED DRAWING COMPETITION COMMITTEE  
ROYAL AUSTRALIAN INSTITUTE OF ARCHITECTS — ACT CHAPTER  
PO BOX 199 MANUKA ACT 2603 Telephone (062) 73 2929



For your information .....

The Australian Conservation Foundation will be holding a major National Conference - The Australian Environment - Taking Stock and Looking Ahead. Friday 7 October to Sunday 9 October 1988 at the University of Technology in Sydney (formerly NSW Institute of Technology).

There will be sections on \*\* Australia - A Land Worth Caring For; \*\* Task Force groups on the state of the environment; \*\* Appraisal of economic, social and institutional constraints to highlight the root causes of environmental destruction; \*\* Discussion groups to work on the development of critical paths for future action; \*\* Evening activities to reinforce day sessions; \*\* Ten day post conference tour to northern NSW Rainforest areas.

For further information contact: Anne Reeves at the ACF Sydney Office on (02) 271497.

---

NATIONAL TRUST OF AUSTRALIA (NSW) - SOUTHERN TABLELANDS REGION

BICENTENNIAL CONCERT

This will be held at Riversdale in conjunction with the Goulburn Music Centre on Saturday 16 April 1988. It will also be a Heritage Week event. The musical group will play items composed in the 1780's which possibly were familiar to some of the personnel on the First Fleet. Supper will be served by the Women's Committee. Tickets will cost \$12 each.

WADDESDON MANOR, BUCKINGHAMSHIRE

The National Trust in England has asked us to publicise their property - Waddesdon Manor in Buckinghamshire. It is situated 50 miles from London and 25 miles from Oxford. Built in 1874-89 for Baron Ferdinand de Rothschild, bequeathed to the National Trust in 1957 by Mr James A de Rothschild. It has a fine collection of French paintings, drawings and furnishings of the 17th and 18th centuries. The house will be open from 23 March to 30 October during 1988. For further information please contact the Trust office at 6 Geils Court, Deakin.

TRUST PHOTOCOPYING SERVICE CHARGES

		<u>Members</u>	<u>Non Members</u>
Up to 10 copies	.....	15¢ each	20¢ each
Above 10 copies	.....	10¢ each	15¢ each



## ESSAY COMPETITION

(Sponsored by National Parks Association of the ACT and the National Trust of Australia (ACT), this competition is open to all students enrolled at secondary schools and colleges in the ACT and its surrounding region.

TOPIC: "CANBERRA'S JOURNEY"

Contestants are invited to explore this theme in the context of their choice, eg,

- \* archaeological - Aboriginal life before European settlement
- \* historical - from Limestone Plains to National Capital
- \* futuristic - life in the 21st century

Length: At least 500 words, but no more than 750.

Prizes: Book tokens to the value of:

First Prize	-	\$150
Second "	-	\$100
Third "	-	\$50

Entries stating - name, age, class level and school should be sent to

Mr Peter Best  
C/- Deakin High School  
Denison Street  
DEAKIN ACT 2600

If you wish your entry to be returned, please enclose a stamped, self-addressed envelope.

ENTRIES CLOSE - FRIDAY 25 MARCH 1988

Prizes will be awarded during Heritage Week 18-24 April 1988. For further information contact Mr Glyn Lewis on 952720.



## MUSICALE

Tuesday 19 April 1988

Members are advised that the National Trust will be holding a Musicale as part of Heritage Week activities. The Musicale will be arranged by David Parker and his wife, Marie Van Hove and will include performances by their students from the Canberra School of Music. Mr Parker has kindly allowed the Musicale to be held in their home at 7.45pm for 8.00pm.

Tickets will be \$14 for members, \$16 for non-members and \$10 for pensioners or students, which includes a light supper.

Full details of the programme will appear in the next Bulletin published in April.



?????????

CAN YOU HELP

?????????



One of the highlights of Heritage Week is the Albert Hall Exhibition, providing a showcase for the many other activities which extend throughout the week. The exhibition will demonstrate the aims and activities of historical, cultural and environmental groups and organisations who work to promote the care of heritage in the ACT and beyond.

This year the National Trust will support the central theme of "Canberra's Journey" by mounting a display featuring the letters, writings and journals which document the travels and lives of Canberra's early explorers and settlers.

Would any members of the Trust have items such as ink pots, quill pens, old letters, sealing wax or blotters, which you would be prepared to loan for our display in the Albert Hall? The stall will be supervised by Trust members and any items lent will be locked in a glass cabinet.

Please phone Meredith Ashton at the Trust office on 810711, if you are able to help.

### AUTUMN IN YASS

If any Members of the National Trust (ACT) are interested in attending this National Trust (NSW) weekend, or would like further details, they can write to: National Trust (NSW), Ticket Secretary, PO Box 53, Edgecliff NSW 2027, or ring (02) 322 401 between 9.30am and 1.30pm.

### AUTUMN IN YASS

May 14 and 15  
Trust Members and Friends

The Yass Plains were discovered in 1821 by Hamilton Hume, his brother John Kennedy Hume, brother-in-law George Barber and W.H. Broughton. Settlers soon followed and by 1830 Yass Village had been established. Today, Yass is the centre of a rich pastoral district which produces some of the world's finest wool. Properties to be inspected are:—

*Bellevalle*, by courtesy of Mr. Charles Barbour, who is a direct descendent of George Barber and his wife, Hamilton Hume's sister.

*Laverslock*, by courtesy of Mr and Mrs John Winterflood.

*Merriville*, by courtesy of Mr and Mrs Rob Clark.

*Ravensthorpe*, the original Merriman homestead, by courtesy of Mr and Mrs Stephen Merriman.

*Werong*, by courtesy of Mr and Mrs John Storey.

There are also three interesting old houses in the town. 2 beautiful churches one designed by Edmund Blacket and one with additions designed by him and a very fine Court House.

The houses to be inspected are

*The Manor*, 99 Rossi Street, Yass, c.1858, by courtesy of Mr and Mrs John Snodgrass.

*Devonia*, 7 de Mestre Street, Yass, c.1862 (once a school), by courtesy of Dr. Jonathon Williams.

*Kerrigub*, 24 Crampian Street, Yass, c.1850, by courtesy of Mr and Mrs Colin Morse.

**Luncheon:** On Saturday will be held in the garden of Mr and the Hon. Mrs Shand Kydd. Luncheon on Sunday will be held at Cooma Cottage, and members and friends will have the opportunity of inspecting this National Trust property. Price on each day \$7.50 per head including wine and coffee.

**Dinner:** On Saturday night a dinner will be held at the Yass Soldiers' Club, 58 Meehan Street. A special menu has been arranged, and Mr John Aimes, the Vice-President of the Yass National Trust, will be the guest speaker. Time 6.30 pm for 7 pm. Price \$18 per head NOT including drinks.

**Accommodation.** Very limited in Yass, but there is a good Motel at Binalong (37 k), one at Gunning (31 k) and many in Canberra (45 k). The roads are good and lead through very pretty country. Early booking is strongly advised.



## COOMA COTTAGE

Official opening of Cooma Cottage  
Tuesday 19th April, 1988

*This will be an historic day for  
the Yass district and the local  
branch of the National Trust.*

*Your support will be most welcome*



## FOUNDERS' DAY DINNER

Monday 9 May 1988

A black tie Founders' Day dinner will be held at the Hyatt Hotel Canberra, on 9 May to celebrate the beginnings of the National Trust in the ACT. The guest speaker will be Dr Jeff Brown-Rigg. Dr Brown-Rigg is Head of the Sound and Radio Collection Services at the National Film and Sound Archive. Since coming to Canberra about a year ago, he has been exploring the voices of Australia; from the little-known singers like Lillian Colenso to major events such as the Inauguration of Canberra recorded by King O'Malley and Lady Denman 24 years after the event. He is a man who enjoys life and the stories it generates, and who is passionate about the past.

Tickets are \$45 and available from the National Trust office. The many people who have reserved tickets should now confirm them by completing the application form in this Bulletin, and returning it to the National Trust Office as soon as possible. Cancellations cannot be accepted after 26 April 1988.

## BOOK REVIEW

### NOTES ON TASMANIA

This is a companion volume to Dr Craig's Engravers of Van Diemen's Land, Old Tasmanian Prints and More Old Tasmanian Prints - all of which were limited editions and are now valued publications. Notes of Tasmania is a Limited Edition of 1000 numbered copies.

Dr Craig was a foundation member of the Tasmanian National Trust and played an active, dedicated and highly respected part in its activities during his lifetime. His vast knowledge and expertise in collecting are widely recognised today and his written works are certain to be amongst the treasured possessions of collectors of future years.

This final volume originated from his decision to write about his various collecting experiences, believing they would be of interest to fellow collectors. As well as providing a very readable account of his collecting career in Notes on Tasmania, Dr Craig has deliberately made a point of recording prices paid for items where possible and then prices obtained at auction.

Being aware of the demand for Dr Craig's earlier books we recommend that you contact the National Trust Office on 810711 to obtain an order form.





OUR PROVISIONAL PARLIAMENT HOUSE

To: The Ticket Secretary, National Trust of Australia (ACT)  
P O Box 173 MANUKA ACT 2603

Please forward ..... tickets (..... members ..... guests) and  
joining instructions for this activity to the address shown on  
the enclosed, stamped, self-addressed normal sized envelope.

I can only attend/would prefer to attend the morning/afternoon  
inspection (cross out whichever does not apply). If willing to  
attend either inspection please tick this box.

I enclose a donation of \$.....for.....adult/s @ \$5 each and for  
.....child/ren between 12 and 18 years @ \$3 each, to cover admin-  
istrative costs in organising the day.

NAME: Ms/Miss/Mrs/Mr .....

ADDRESS: .....P/CODE: .....

TELEPHONE: .....(w) .....(h)

Cut Here- - - - -

\*\*\*\* ANTIQUA FAIR OFFICIAL OPENING \*\*\*\*

To: The Ticket Secretary, P O Box 173, Manuka ACT 2603

Please forward.....admission cards at \$10 each, to the  
Official Opening of the 1988 Canberra Antiqua Fair at the Albert  
Hall on 17 March at 6pm. Total of cheque enclosed \$.....

NAME Mr/Mrs/Miss/Ms.....

ADDRESS.....P/C.....

TELEPHONE.....(H) .....(W)

Cut Here - - - - -

\*\*\*\* FOUNDERS' DAY DINNER - 9 MAY 1988 \*\*\*\*  
at the Hyatt Hotel Canberra

To: The Ticket Secretary, P O Box 173, Manuka ACT 2603

Please forward.....admission cards at \$45 each. Total of  
cheque enclosed \$.....

NAME Mr/Mrs/Miss/Ms.....

ADDRESS.....P/C.....

TELEPHONE.....(H) .....(W)

NAMES OF MEMBERS AND GUESTS ATTENDING:

.....  
.....  
.....  
.....





## ANTIQUES - LECTURE SERIES



Apologies to those members who put their names down for this Antique Course by Mr Charles Aronson of Aronson Antiques, Sydney. Unfortunately, the minimum number of people required was not reached and therefore the Course was cancelled.

However, Mr Aronson has agreed to hold this course in the middle of the year. So if you would like to join in, keep an eye on the Bulletin for the date of this course in June or July. The lecture fee is \$65 for Members and \$80 for Non-Members. This includes the cost of the lectures, morning tea and refreshments. You will be required to provide your own packed lunch.

---

## TRUST MEMBERSHIP OVERSEAS

Members planning an overseas holiday during the northern summer are reminded that reciprocal membership arrangements apply between the National Trust in Australia and the National Trust in the United Kingdom, United States of America, Bermuda and New Zealand.

The address for the National Trust in England is 42 Queen Anne's Gate, London SW1H 9AS, (01-2229251).

The address for the National Trust for Scotland is 5 Charlotte Square, Edinburgh EH2 4DU (031-2265922).

The address for An Taisce (National Trust) in Ireland is 41 Percy Place, Dublin 4, (681944).

The address for the National Trust for Historic Preservation in America is 1785 Massachusetts Avenue, N.W., Washington DC 20036-20036-9979, (202-6734000).

The address for the Bermuda National Trust is P O Box 61, Hamilton 5.

The address for the New Zealand Historic Places Trust is Antrim House, Boulcott Street, Wellington, (04-724341).

Members who call will receive helpful advice about properties open for inspection. Your National Trust (ACT) card entitles you to free admission to properties owned by the National Trust and which are open to the public.

A small booklet "The National Trust Handbook 1988" is available from the London Trust. This booklet will also be available from our ACT Trust Gift Shop soon.

---

## NEW MEMBERS FOR THE FUND RAISING COMMITTEE

The Fund Raising Committee is one of our most important Committees. In an effort to attract more members to this Committee, the meeting times have been changed to 5.30pm on the first Monday of each month. It has also been suggested that the meetings be held every second month, if we get enough new members willing to join this Committee.

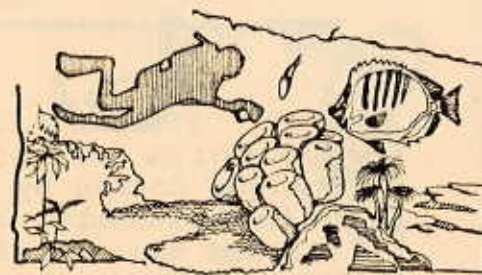
---



---

## Y O U N G   T R U S T   N E W S

---



### VISIT TO JERVIS BAY

Congratulations are due again to the Young Trust organisers for yet another fabulous weekend expedition - this time to Jervis Bay on 27 and 28 February 1988. Young Trust members were joined by a number of other Trust members (dare I say, some not so young?) and in all we totalled over 40 in our group. Most of the participants stayed at the CCAE Field Study Centre at Jervis Bay Village, with the overflow accommodated at Kullindi, a wonderful, historic settlement, set beside St Georges Basin and classified by the National Trust (ACT).

The programme was an excellent blend of interesting and pleasurable pursuits - we toured HMAS Creswell, the Naval College, inspected the ruins of Cape St George Lighthouse (built around 1860 in the wrong location!), and went on several easy walks around Greenpatch, Whiting Beach and Blacks Harbour. Social highlights included a barbeque dinner at Kullindi on the Saturday night and a number of swimming opportunities throughout the weekend. A final swim at Iluka before heading home to Canberra (and Sydney for some) was somewhat curtailed by ALLEGED sightings of a shark.

Particular thanks are due to Rodney Garnett for his educative and informative explanations about locations we visited, Garth Setchell for the reconnaissance trip a fortnight before and to Meredith, Amanda and Pat, without whose work the trip would never have eventuated.

PETER WADDELL-WOOD

---

### NATIONAL TRUST OF AUSTRALIA (ACT)

#### BULLETIN

Frequency of Issue: Approximately every 6 weeks.

Copy Closes: 28th day of month prior to publication.

Next Issue: April 1988

Advertising: Enquiries to Amanda Myers on 810711.

Annual Subscription Rates:

Single	\$20
Household	\$30
Pensioner:	
\$10 (single)	
\$15 (household)	
Junior	\$10
Pensioners	\$10

