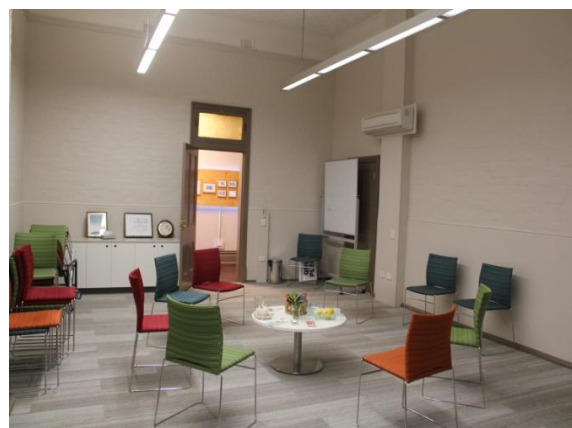
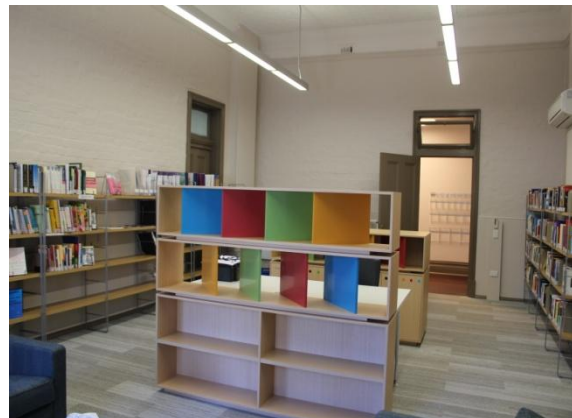
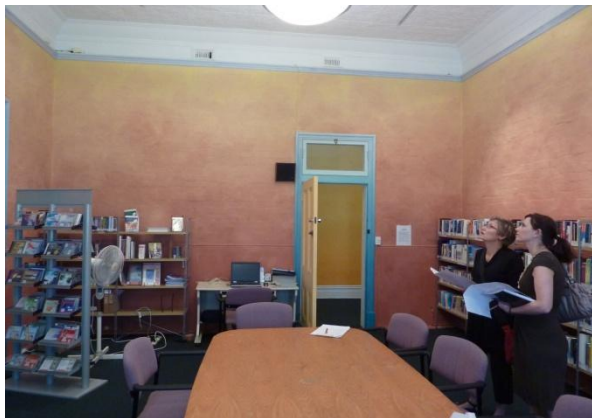




WANSLEA

Conservation & Adaptive Re-use Before and After





The successful partnership between the National Trust of Western Australia, Lotterywest, BHP Billiton and the Brady Cancer Support Foundation has enabled *Wanslea* to be adapted as a support care centre for those with cancer and their families.

This project has delivered immediate community benefits:

- A long term, sustainable use of a State owned heritage listed building
- 28 highly skilled construction related jobs
- Breast Cancer Care WA a year ago had staff of 7. Now it has 10 with client contacts of about 500-550 per month and up to 9 monthly support groups of 60-70 people
- melanomaWA a year ago had 1 full time staff plus 1 part time. Now it has 1 full time plus 4 part time plus 6 volunteers with 'support clients' growing by 20 – 30 per month
- Cancer Support WA a year ago had staff of 10. Now it has 15.3 with client contacts of about 561 per month, 331 people attending counselling and 152 people in support groups per month
- Social benefits for both present and future generations of Western Australians

