

The magazine from the National Trust of Australia (Victoria)

# Vic News

August 2014

## Love Desire & Riches

Mulberry Hill  
Reopens

Steampunk  
at Tasma



Gowns from Love Desire & Riches exhibition  
(National Trust of Australia (Victoria) collection)

## Contents

Message from the Chairman	2
Message from the CEO	2
Strategic Plan 2014-2018	3
Love Desire & Riches	4
Vale Joan Wettenhall	6
Welsh Congregational Church and Penny School, Maldon	6
Gallipoli Oaks project grows	7
2014 Heritage Awards	7
Postcards from the Heritage Festival	8
Mulberry Hill Reopens to the Public	9
High Tea at Barwon Park	9
The Antipodean Steampunk Show	11
Advocacy Update	12
Grants announced: Victorian Heritage Register Places and Objects Fund	14
Rippon Lea Under the Microscope	15
Vintage Clothing Success	16
Notice of Board Election 2014	16
Happenings at Old Melbourne Gaol	17
What's on?	18

The National Trust of Australia (Victoria) acknowledges Traditional Owners and pays respect to the spiritual, physical and cultural connection they have with their country as the first peoples of the land now known as Victoria.

National Trust of Australia (Victoria)  
Tasma Terrace, 4 Parliament Place,  
East Melbourne, Victoria 3002  
Telephone: 03 9656 9800  
Facsimile: 03 9650 5397  
Email: [info@nattrust.com.au](mailto:info@nattrust.com.au)  
[www.nationaltrust.org.au/vic](http://www.nationaltrust.org.au/vic)

© Copyright, National Trust of Australia (Victoria)  
unless stated otherwise.

## Message from the Chairman

Dr Graeme L. Blackman OAM

Welcome to the August edition of Vic News. In this latest issue, I am pleased to be able to bring you more detailed information about the 2014–18 Strategic Plan now adopted by our Board. Building on our commitment to clearly and transparently articulate the Trust's direction and vision for the future, the Strategic Plan articulates the values of Leadership and Inspiration, Celebration and Inclusion, Innovation and Learning, Trust, Responsibility and Resourcefulness. The plan can be viewed on our website at [www.nationaltrust.org.au/vic](http://www.nationaltrust.org.au/vic).

The past quarter has been a blockbuster period for visitation to our properties. It was a singular pleasure to open *Love, Desire and Riches* in July, the biggest exhibition ever produced by the National Trust, which has transformed Rippon Lea into a showcase for wedding fashion from around the globe.

Recognising our commitment to promoting conservation in both metropolitan and regional communities, Victoria's Heritage Restoration Fund, administered by the Trust with funding from the State Government, has provided \$900,000 in funding to heritage places across Victoria, including Como House, with the second round of applications closing in August.

I would like to extend a special thanks to those who generously contributed to our Annual Appeal, and as always, I thank you for your ongoing support. We would also like to welcome members to join us for the Annual General Meeting on Saturday 15 November at Mulberry Hill in Langwarrin.

## Message from the CEO

Martin Purslow

The lead-up to this August edition of Vic News has seen some landmark events at the Trust. The beginning of July saw the opening of *Love, Desires and Riches*, the biggest exhibition by the National Trust to date, and the largest retrospective of wedding fashion seen in Australia. Featuring historic gowns as well as pieces by international designers such as Akira, Valentino and Collette Dinnigan, we are anticipating record crowds through the gates of Rippon Lea.

Tasma Terrace has also been opened up as never before for *the Antipodean Steampunk Show*, featuring an astonishing array of Victorian-futurist jewellery, fashion, costume and accessories by contemporary designers displayed over three levels of the Trust's headquarters. This travelling exhibition by artisan is capturing a new, young and engaged audience, and we're happy to be welcoming an unprecedented number of visitors to our landmark building.

Much else has also been taking place supported by our staff volunteers and branches often behind the scenes. During April and May, a record number of visitors took part in the Trust's 'Journeys' heritage festival at over 250 events across Victoria. The first weekend of the festival saw the successful reopening of Mulberry Hill to the public after much needed conservation works and investment in visitor facilities.

In June, the second annual acorn harvest for the Gallipoli Oaks program secured the future of a flourishing program which has been taken up by over 400 schools across the state. We are incredibly proud of this project, which will be at the forefront of the Trust's Centenary of Anzac activities, creating a legacy of living memorials for generations to come.

We hope you enjoy the vibrant and exciting content in the August Edition of Vic News, and encourage you to visit Rippon Lea to see *Love Desire and Riches*, which runs until the end of September.

To advertise in Vic News, please email [marketing@nattrust.com.au](mailto:marketing@nattrust.com.au)





# Strategic Plan 2014-2018



Following a thorough review of the Trust's activities, the Board of the National Trust of Australia (Victoria) is delighted to have recently adopted a new five year plan to chart our strategic direction and priorities from 2014.

Our 2009-13 Strategic Plan refocused the Trust's strategic priorities, restructuring our organisation, delivering improved sustainability, prioritising investment into our properties and embracing innovation and technology. We are now more than ever able to celebrate and advocate for our heritage.

In developing our 2014-18 Strategic Plan we have built upon 58 years of conservation activity across our natural, cultural and Indigenous heritage. Our aim is to ensure that the Trust is in a position to thrive, enabling the delivery of our community focused mission and encouraging appreciation, conservation and celebration of our shared heritage.

**The 2014-18 Strategic Plan is available at [www.nationaltrust.org.au/victoria](http://www.nationaltrust.org.au/victoria) or in printed format upon request.**

As the premier heritage advocacy organisation and largest operator of heritage sites in Victoria and now the largest Trust by membership in Australia, the Trust has a responsibility to clearly and transparently articulate its direction and vision for the future.

*Our vision remains for the Australian community to understand, value and enjoy the natural, cultural and Indigenous heritage that creates our national identity; whilst our mission is to inspire the community to appreciate, conserve and celebrate its natural, cultural and Indigenous heritage.*

To deliver our mission and vision we have committed to six core values which shape our strategic planning priorities. On these we will build our programming, manage our development, seek out partnerships and embrace opportunities.

We value:

- **Leadership and Inspiration**  
An innovative, effective and respected advocate, we inspire the community to appreciate, recognise, conserve, protect and celebrate our heritage.
- **Celebration and Inclusion**  
We are passionate about engaging our community and working with partners to promote the appreciation of and accessibility to our shared heritage.
- **Innovation and Learning**  
We are committed to sharing our stories with our community through new and dynamic education and interpretation programs.
- **Trust**  
We display transparency and credibility in all that we do so that the community can have confidence in the custodianship of our shared heritage.
- **Responsibility**  
We meet our commitments and fulfil our obligations to the community as custodians of heritage.
- **Resourcefulness**  
We efficiently utilise our resources to achieve sustainable outcomes.

*(Images clockwise from left) 1. Working with Indigenous communities to unlock our shared stories at the Our History Heritage Festival event. 2. Supporting regional communities celebrate their heritage in Chiltern. 3. Working with partners to undertake archaeological research at Gulf Station. 4. Breathing life into our preserved gardens at Como.*

# LOVE DESIRE & RICHES



*By Felicity Watson*

As any bride will tell you, weddings involve months of meticulous planning, from the date and the venue to the smallest detail, be it the coif of the hair or the perfect scent. In many ways, the production of a blockbuster exhibition is not dissimilar. In order to find out more about the process of putting together Love, Desire and Riches, Vic News spent some time with Exhibition Curator, Elizabeth Anya-Petrivna, and Commercial Manager, Drew Grove, the 'co-curators' who united their vision to create the biggest exhibition in the Trust's history.

Anya-Petrivna describes the dress that began it all in 2010: 'I opened one of the textile archive boxes and found inside it a heavily embellished late-nineteenth century Parisian wedding gown. It was

labelled "Made by Madame Maugas". Then I discovered a second Madame Maugas in the National Trust collection and having these two gowns, with a local provenance and exciting local stories that had their source in high Parisian fashion, sparked that initial interest.'

For the next three years the idea remained in the background, with Anya-Petrivna conducting research when time allowed. She describes how the Trust's costume collection was a rich source of inspiration: 'Wedding gowns tend to be kept as mementoes. I think they're a really powerful and evocative reminder of the way material culture works in people's lives and how they hold onto things. And as there are a lot of wedding gowns in

the Trust's collection it seemed obvious that we should do something with this incredible repository of fashion.'

Commercial Manager Drew Grove describes how the success of the 2013 Miss Fisher's Costume Exhibition at Rippon Lea gave the Trust courage to think big: 'Having a fashion-driven exhibition in one of our properties was a really good test case to see what we could do; what we were capable of; what the house was capable of. One of our challenges is the fact that our spaces aren't white, rectangular boxes where it is easy to install any type of exhibition. But we've been able to turn this into a positive because our places have got such character and stories, and are aesthetically beautiful.'

*(Images above from left) 1. Miss Havisham room and gown. 2. Bridal arch and red carpet supplied by Weddings of Distinction.*





With this in mind, the curatorial team looked to contemporary fashion and pop culture to tell a bigger story. Anya-Petrivna and Grove aimed to provide content that fashion enthusiasts and academics would find interesting and compelling, as well as a range of gowns that would appeal to a wider audience. Grove reflects that such exhibitions 'are usually either crass commercial or high academic, but I think we've able to bridge that seamlessly.'

What followed was six months of round-the-clock work to secure each gown for the exhibition, with gowns sourced from royal families, costume designers and celebrities across the globe. Grove estimates that 100 individuals were

approached, and countless midnight phone calls were required to negotiate with owners abroad, such as Marie-Chantal, Crown Princess of Greece, and costume designer Annie Symons, who created the iconic Miss Havisham dress worn by Gillian Anderson in the BBC adaptation of *Great Expectations*.

While the dress of Princess Marie-Chantal, valued at up to \$400,000, proved to be the most challenging dress to acquire in terms of logistics, Grove reveals 'the most difficult loan to secure was the Kylie Minogue dress, due to the rigorous policies in place at the Tasmanian Museum and Art Gallery.'

Both Anya-Petrivna and Grove have been thrilled with the positive reception towards the exhibition from the media, members of the fashion community, National Trust members and the wider public. As a result, Grove is confident that 'this will be the model moving forward that will allow us to be financially sustainable as an organisation but also provide extremely compelling community engagement opportunities in our spaces.'

**Love, Desire and Riches is at Rippon Lea Estate until 30 September 2014.**

**For further details, visit [www.nationaltrust.org.au/vic/LoveDesireandRiches](http://www.nationaltrust.org.au/vic/LoveDesireandRiches).**

*(Images clockwise from left) 1. Gowns of colour at the exhibition. 2. Curator, Elizabeth Anya-Petrivna with Milliner, Richard Nylon at the official exhibition launch. 3. Paper couture wedding dress provided by Christina Re. 4. Morris Minor on display from the Trust collection. 5. Light installation for the fortnightly Friday night viewings.*



## Vale Joan Wettenhall

(20 August 1922–3 June 2014)

*Elizabeth Cunningham*

Joan Wettenhall, a long-standing member of the National Trust Women's Committee, passed away on Tuesday 3 June 2014.

Joan was one of the earliest members of the Women's Committee, serving for over 40 years, including two two-year terms as President. She received her long service award many years ago and in 1997 was honoured with an Outstanding Volunteers Certificate.

Over her long membership she contributed tirelessly and loyally to all committee work, frequently lending her house for Christmas and other parties, as well as for storage of diaries, cards and other stock.

In 1997, she organised a highly successful tour of properties in the Deniliquin district, raising a significant amount from the weekend.

In support of Joan's dedication to the Trust, her husband Dr Norman Wettenhall, a noted philanthropist, served on the Trust Board for a number of years.

Joan Wettenhall's wise leadership and guidance were an enduring source of strength to the Committee and she was loved by all who knew her. The Committee and the Trust were privileged to have benefitted from her outstanding contribution.



## Welsh Congregational Church and Penny School, Maldon

The National Trust's ownership of two Maldon properties, the Penny School and adjacent former Welsh Congregational Church, began in the 1970s when neither were protected by legislation. They have been the subject of much discussion with the community over the last four years.

Both sites have been leased by the Trust at a very modest rental for over a decade to a commercial tenant. The Penny School had been operated as an independent commercial functions and gallery business, and the Welsh Church was used for associated storage, having last held a service in the 1970s. Recognising the need for private investment in the business, the Trust had agreed to sell the site to the operators in a decision widely supported by local members. Sadly Barry Veith, the site's operator, passed away in 2013 before the exchange of contracts, and despite negotiations with his wife and partners and subsequent approaches by other potential operators, the decision was ultimately taken by the Trust to advertise the sale of the properties, to secure wide public attention and the best possible end user prepared to undertake investment and a sustainable use. Both buildings were and are still protected by planning legislation, and a Trust covenant was placed upon the titles ensuring that permission is required from the Trust for any changes. The Penny School is now on the Victorian Heritage Register, giving it the highest level of protection in the state.

On Sunday 11 May the Penny School sold for \$496,000 and the Welsh Church for \$225,000. The Trust respects the views of our local members, many of whom were passionate in their public engagement in the sale that centred around the protection of the properties once they left Trust management, and a desire to see both retained. With current heritage protection and the addition of legal covenants the Trust believes many such sites are robust enough to have a vibrant future in private ownership by individuals with a passion to care for them.

The pews from the Welsh Church will be transferred to Gulf Station to be installed in the relocated 1860s Healesville Uniting Church Hall. The small residual collection of ephemera has now been inventoried and offered to Maldon Historical Society for local display. All proceeds from the sale are being reinvested in capital improvements and restoration at the Trust's other 32 operating properties in Victoria.





## Gallipoli Oaks project grows

The Gallipoli Oaks Project is growing well towards the Anzac Centenary in 2015–18. Over 400 schools have now registered for a commemorative tree, which will be planted in primary schools during a remembrance ceremony with local RSL members. Over 30 RSLs are on board so far, and we hope more will become involved as the centenary of the Gallipoli landing approaches.

We were delighted to receive a \$10,000 philanthropic grant from the Danks Trust, which has funded a digital education kit. The kit includes an e-book of 'The Gallipoli Oaks Story' and a teachers' resource of classroom activities. The teachers' resource was developed by the History Teachers' Association of Victoria and satisfies the requirements of the Grade 3 National Curriculum unit 'Community and Remembrance'. The education kit was launched by the Hon. Martin Dixon MP (Minister for Education) and the Hon. Damian Drum MLC (Minister for Veterans' Affairs) at the Melbourne International Flower and Garden Show, where the National Trust exhibited some rare Gallipoli Oaks seedlings to interested gardeners.

Most recently, the second annual National Trust Gallipoli Oaks acorn harvest was launched at Geelong Grammar by Mr Ramsay MLC, an old Grammarian and Member for Western Victoria. Mr Ramsay announced that a \$7,000 Anzac Centenary Community Grant had been made to the Gallipoli Oaks Project, which will fund commemorative plaques to accompany the seedlings to primary schools.

Regular updates about the project are available at [www.gallipolioaks.org](http://www.gallipolioaks.org)

*(Images clockwise from top) 1. Martin Dixon MP and Damian Drum MLC launching the education kit with Dr Graeme Blackman at the Melbourne International Flower and Garden Show. 2. Geelong Grammar students at the second annual acorn harvest. 3. Simon Ramsay MLC launching the second annual acorn harvest at Geelong Grammar*

## 2014 Heritage Awards

The National Trust Heritage Awards program is a keystone in the strengthening of relationships with councils and communities across Victoria. As a statewide program, we encourage all communities to celebrate their heritage and the people who are committed to its conservation and preservation. Three award ceremonies have been held this year with the list of winners listed below and available on the National Trust Website.

The Mornington Peninsula Awards will be presented on Friday 1 August, 2014 and the Mt Alexander Shire Awards will be held on Thursday 28 August. Congratulations to all award winners and participants.

### BALLARAT HERITAGE AWARDS

Presented by the National Trust Ballarat Branch and City of Ballarat at the Old Colonists Club, Ballarat, 6 May 2014.

#### Creative/Adaptive Reuse of a Heritage Place

Old Learmonth Bakery and Blacksmith, 339 High Street, Learmonth

#### New Work/Development Within a Heritage Area

19 Nightingale Street, Newington

#### Conservation of a Heritage Place or Historic Collection

Ballarat Fish Acclimatisation Society, 401 Gillies Street, Wendouree

#### Special Heritage Trade Skills

Geoff Norwood, Stone Cottage, 145 Bell Avenue, Mt Helen

#### Special Commendation

Ballarat Acclimatisation Society, 401 Gillies Street North, Ballarat

*Special Commendation: Individual*  
Phil Rogers, Ballarat Clarendon College History (2 volumes)

**Recognising Individual Skills**  
Anne Beggs-Sunter

#### Heritage Innovation

Ballarat Dreamtime Aboriginal Cemetery Project, Ballarat General Cemeteries Trust, Finding Futures and Wadawurrung-Wathaurung Aboriginal Corporation

*Special Commendation:* Eurekapedia, Ballarat Reform League Inc.

**Greg Binns Award for Outstanding Community Contribution to Heritage**  
Golden City Paddle Steamer Museum Society Inc

### INDIGO HERITAGE AWARDS

Presented by the National Trust North East Branch and Shire of Indigo at Star Theatre, Chiltern on 16 May 2014.

#### Junior Heritage Award

'Making History', Yackandandah Primary School (teacher Brendan Hogan)

*Commendation:* 'Out of the Ashes' St Mary's Primary School Rutherglen

#### Restoration of a Heritage Place

Grandstand, Chiltern Sporting Complex, Alliance Street, Chiltern, Chiltern Recreational Reserve Committee of Management

*Commendation:* 53 Ford Street, Beechworth, Martin Thomas and Sue Thomas

#### Sustainability and/or Greening of a Heritage Place Award

3 Finch Street, Beechworth, Peter Brygel and Margo Maller

#### Open Heritage Award

Linda Peacock (Collections Manager), Robert O'Hara Burke Museum

*Commendation:* Yackandandah Museum Storage Facility Extension, Yackandandah and District Historical Society Inc.

*Commendation:* Third Annual Heritage Weekend, Wahgunyah Progress Association

#### Individual Heritage Advocacy in Indigo Shire

Susan Reynolds, Yackandandah and District Historical Society Inc. and Museum

*Special commendation* to the late Barry Deas, founding member Rutherglen Branch, North Eastern Historical Society

### GEE LONG HERITAGE AWARDS

Presented by the National Trust Geelong and Region Branch and City of Greater Geelong at Sacred Heart College, Geelong, 30 April 2014.

#### Restoration and Repair of a Heritage Place

Former Newtown Fire Station, Nicole and Steven Foster (owners), Antoni Pijaca (Tuckpointer)

Waverly, 94 Western Beach Rd, Simon Taylor (Project Officer) Con Alki (Roof Slater)

Geelong West War Memorial and Forecourt, Tom Leggatt, (Landscape Architect, CoGG)

#### Alterations and Additions to a Heritage Place

Little Creatures, 221 Swanston St, South Geelong

Former St Francis' Church, Portarlington Rd, Leopold, Merle Francis and Jim Francis (owners)

74 Sydney Pde, Geelong, Adelle and Matthew Lynch (Owners)

#### Restoration and Repair of a Heritage Place

608 Rutland St, Newtown, Cameron Hamilton





# *Journeys: Postcards from the Heritage Festival*

The National Trust Heritage Festival finished in fantastic fashion over its final weekend in May. The month-long Festival was the National Trust's biggest and best yet with over 250 events hosted across Victoria. Over 50 events were coordinated by the National Trust branches, properties and expert committees. This year's Festival attracted an unprecedented amount of media attention in both metropolitan and regional radio and newspapers, with a potential reach of 750,000.

Planning for 2015's festival is already underway. The coming year will be an opportunity to share our extraordinary stories of 'Conflict and Compassion'. It will be a chance for all communities to commemorate conflict and how it has shaped our unique and shared heritage. We gratefully acknowledge the support of the Australian Government through the Department of the Environment National Trusts Partnership Program.

*(Left to right starting at the top) 1. A Journey Through Melbourne's Modernism, by Melbourne Architours and National Trust Built Environment Committee. 2. Our History More Than Rocks, by National Trust, Victorian Aboriginal Heritage Council and Koorie Youth Council. 3. Easter Sunday Heritage Festival launch at Mulberry Hill. 4. Art Journey on Collins, by National Trust Public Art Committee. 5. Newham Primary school students at the Anzac Day commemoration event for Woodend Avenue of Honour. 6. Enjoying the top of Mt Leura on the Western District Landscape Tour. 7. Giant Trees and Little Creatures, a guided tour of the proposed Great Forest National Park, by National Trust of Australia (Vic) and MyEnvironment Inc. 8. Crowd waiting to see the Beehive Building at Hidden Gems, by Bendigo and Region Branch. 9. A Journey in Space and Time Through Arden-Macauley, by Inner West Branch.*





# Mulberry Hill Reopens to the Public

*Cara-Ann Simpson, Mulberry Hill Regional Property Manager*

First impressions of Mulberry Hill are of the majestic American Colonial style mansion peeking through tall trees and an iconic walled hedge. Harold Desbrowe-Anne's American Colonial design is unexpected in the Australian landscape, yet with the surrounding rolling hills and wandering gardens the building nestles itself, becoming a part of the landscape, rather than sitting atop it.

Mulberry Hill was the home of Sir Daryl (1889–1976) and Lady Joan (1896–1984) Lindsay. Sir Daryl, from the notable Lindsay family, started his working life with a short adventure into banking and then jackerooing in Queensland, before he enlisted as a driver in the Australian Army Service Corps. Lindsay served in France, where he sketched trench life and digger portraits, and eventually ending up sketching facial wounds and early plastic surgery related to war trauma at the Queen Mary's Hospital in Kent.

On Saint Valentine's Day in 1922, he married Joan à Beckett Weigall in London. Joan à Beckett Weigall's relatives also include a number of notable people including her father Theyre à Beckett Weigall, barrister; great uncle Sir William à Beckett, first chief justice of Victoria; and her maternal grandfather Sir Robert Hamilton, Governor of Tasmania from 1887–93. She was also related to the well-known artistic Boyd family, with cousins Penleigh and Martin often visiting the family home while she was growing up.

In 1925, the Lindsays purchased Mulberry Hill through cousins of the artist Fred McCubbin, which had an existing 1880s cottage. This cottage was retained in Desbrowe-Anne's grand design, built in 1926, and includes Daryl's studio, kitchen and scullery.

Sir Lindsay's career as the National Gallery of Victoria Director (1941–1956) saw radical changes in the gallery's direction with new acquisition policies assuring modern art was no longer exiled, but rather embraced alongside traditional masters. In 1957 Sir Lindsay was awarded a knighthood recognising his contributions to the Australian art industry.

Lady Lindsay is most well known for her novel, *Picnic at Hanging Rock* (1967), immortalised by Peter Weir's iconic film rendering on the text in 1975. Her autobiographical book, *Time without Clocks* (1962), provides a wonderfully lyrical and nostalgic glimpse into the life of the Lindsays, their time at Mulberry Hill and Lady Lindsay's unusual perception of time.

Sir Daryl and Lady Joan Lindsay bequeathed Mulberry Hill to the National Trust of Australia (Victoria).

There is both the mystery and romanticism that is apparent in Lady Joan's publications at Mulberry Hill within the house, as well as in the surrounds. In 2010 the property was the recipient of the Spencer Leason Bequest, which has seen the development of an amphitheatre and carpark to improve the properties accessibility and infrastructure, as well as the opening of the Spencer Leason Reserve. Ongoing plans for continued improvement are underway, and Mulberry Hill is experiencing a flurry of activity to renew the life and energy of this incredible property.

Exciting events are being planned for Mulberry Hill with a Spring 2014 event soon to be announced, Christmas Twilight Markets being held in December, and of course a St Valentine's Day event in 2015.

Mulberry Hill is actively looking for volunteers in the garden, house, admission, conservation cleaning and administration areas.

Mulberry Hill House is open on Sundays for guided tours at 11:30am, 1.00pm, and 2:30pm. The Spencer Leason Reserve is open daily.

The property is available for weddings and functions by contacting Jo Beshara on 03 9656 9815. Group bookings can be made by calling 03 9656 9804.

For information about the property or volunteering please contact Cara-Ann Simpson on 0466 796 549, or at [mulberryhill@nattrust.com.au](mailto:mulberryhill@nattrust.com.au).

## High Tea at Barwon Park

The National Trust's Barwon Park Mansion and Elegant Events invite you to indulge in High Tea on Sunday 19 October and Sunday 9 November, from 1.30pm–3.30pm.

In the mansion's elegant dining room, guests will be treated to savoury and sweet delights using vintage bone china settings - including Wedgwood and Royal Albert trios - as well as enjoying silver service and freshly brewed tea and coffee.

Host Jennifer Blomeley from Elegant Events will also give a talk about the history of High Teas and the use and care of your teacups. Guests are welcome to bring along their own trio - cup, saucer and plate - and tell a little about its story and how they acquired it.

**High Tea tickets are \$58, which includes a tour of the Mansion at 105 Inverleigh Road, Winchelsea. For bookings, phone 03 9656 9804.**

PRARRAN  
MECHANICS' INSTITUTE  
VICTORIAN HISTORY  
LIBRARY

Established 1854

Over 25,000 items of  
Victorian history,  
resources for genealogy  
and much more  
available for loan.

**[www.pmi.net.au](http://www.pmi.net.au)  
(03) 9510 3393**

(Left to right) 1. Mulberry Hill reopens to the public on Easter Sunday, 2014.  
2. Curator Elizabeth Anya-Petrivna shows visitors the Lindsays' dining room.



## STAY HILTON. GO PLAY AT RIPPONLEA

Located in the attractive inner-city suburb of East Melbourne, the elegantly furnished Hilton on the Park - Melbourne is the perfect base to experience the best of Rippon Lea House and Gardens' The Fashions of Weddings exhibition.

Starting from \$239\*, the exclusive package includes:

- One-night accommodation in an upscale King Hilton guest room
  - Two adult passes for The Fashions of Weddings
- Two welcome drinks at Park Lounge, overlooking Fitzroy Gardens
  - A late Check-Out of Noon

\* Full buffet breakfast for two adults at Gallery Restaurant can be added for a package price of just \$279 per night.

**For more information or bookings,  
please visit [hiltonmelbourne.com.au/ripponlea](http://hiltonmelbourne.com.au/ripponlea) or  
dial 03 9419 2000.**



**Hilton**

ON THE PARK-MELBOURNE

©2014 Hilton Worldwide

192 Wellington Parade | East Melbourne | 3002

# RT Edgar



'Korori' - Mt. Macedon

## Heritage specialists

For over 100 years RT Edgar has been selling the finest Victorian Real Estate across Melbourne, Coastal, Rural and Alpine regions. Now RT Edgar, (Macedon Ranges), is adding Heritage property to its portfolio – a unique service specialising in significant period homes, heritage overlays and important “at – risk” properties ripe for renovators across Victoria.

Our heritage expert has vast experience in the understanding and knowledge pertaining to restoration costs, architectural periods, house styles, construction methods, and the perceived issues associated with heritage. We are able to offer a crucial service to both vendors and buyers alike, regarding the selling or purchasing of heritage property.

If you are considering selling your unique property contact RT Edgar Macedon Ranges on 54 271222 or 0448 271 110.

[rtedgar.com.au](http://rtedgar.com.au)

124 High Street, Woodend  
55 Mollison Street, Kyneton  
25 B & C Hamilton Street, Gisborne

5427 1222  
5427 1222  
5428 8633



# The Antipodean Steampunk Show

*Alexandra Hill, Projects Manager - Trust Development*

Contemporary technology and Victorian styling collided in spectacular fashion during *The Antipodean Steampunk Show* at Tasma Terrace from 30 June to 8 August. For the first time, the Trust created a vertical terrace experience to display this extraordinary collection of artworks.

We asked visitors, if today's technology had been introduced in the nineteenth century, what would the world look like? *The Antipodean Steampunk Show* artists Russell Anderson, Lisa Black, Richard Clarkson, Channele Collier, Dij Dijor, John Doe, Gallery Serpentine, Alexandra Gill-Chambers, Caleb Heinselman, Chris Kellett, Fyodor Krasniy, Anthony Lucas, Andrew MacDonald, Michelle Murray, Kate O'Brien, Cliff Overton, Pendragon, Don Pezzano, Filip Sawczuk, Jos Van Hulsen, Tim Wetherell, Shayn Amber and Romy Sai Zunde explored this fascinating reimagined world in a mash-up of past, future and fantasy.

The artists contributing to the Steampunk exhibition come from a range of cross-discipline backgrounds including engineer-sculptors, artist-scientists, shoemakers, jeweller-taxidermists, writers, performers, photographers, filmmakers, tinkerers, designers and hobbyists.

Born in literature in the 1980s, a response to the sci-fi 'Cyberpunk' genre, the visual richness of Steampunk work soon transcended the page. Its influence can be found in film and fashion, as well as in the workshops of scores of hobbyist tinkerers and professional artists alike.

Exhibition curator Kirsten Fitzpatrick said, 'We are excited to present the first public gallery exhibition of this fascinating movement in Australia. While once dismissed as a passing subculture fad, Steampunk is taking an ever stronger hold on contemporary culture. It speaks of a widespread desire for authenticity and an alternative future of handmade and sustainable production.'

Rapidly changing technology and the modern obsession with continual consumption have led to an endless process of upgrade, improvement, and replacement. Today's production lines are inevitably tomorrow's landfill. The Steampunk movement rails against this mentality by using elaborate craftsmanship to transform mass produced contemporary products into unique objects of desire.

*The Antipodean Steampunk Show* is the first major steampunk exhibition in Australia and has brought an extraordinary collection of transformed jewellery, shoes, time machines, ray guns, photography and music players, all modified to reflect nineteenth century aesthetics, to a national audience.



(Images from top) 1. Kate O'Brien, *Paris Green*, 2012. 2. Russell Anderson, *Tea Bag Jiggler 5*, 1993-94. 3. Caleb Heinselman, *The Samson Revolaser*, 2012.

artisan



Australian Government  
Visions of Australia



Australian Government  
Visual Arts and Craft Strategy  
Queensland



Australian Government



Queensland Government

# Advocacy Update



## Former Palace Theatre and Bourke Hill Precinct

Following Planning Minister Matthew Guy's rejection of the application for redevelopment of the Palace Theatre site at the top of Bourke Street in February, a smaller, revised scheme was lodged with the City of Melbourne, albeit still twice the height limit. We opposed the application. In June, Minister Guy announced that he would implement interim mandatory height controls at the existing limits of 15m, 23m and 60m in the Bourke Hill Precinct. A permanent control will be exhibited this year. We welcome Minister Guy's announcement as a huge step towards certainty in protecting the low-rise heritage precinct around Parliament. The developer is now understood to be preparing an application to be consistent with the new height limit, although still demolishing the building.

## Forum Theatre

The proposed restoration of the Forum Theatre is a welcome proposition by the Mariner Group and the building is long overdue for extensive restoration works. However an application for a new mixed use 107m tower including a boutique 4-star hotel which would break the 40m height limit by a factor of 2.5 is also proposed. The linking-through of the development to Hosier Lane will have a considerable impact, including a significant loss of graffitied wall space - about 20% of the eastern side of the laneway. However much the development seeks to integrate its hotel operation into the area, the operations of a boutique hotel will be very much against the grain of the area and could alter the tolerated (and

encouraged) counter-culture and dynamics of Hosier Lane, and we have lodged an objection with the Minister for Planning.

## Queen Victoria Market

In October 2013 the City of Melbourne announced their plans for the redevelopment of Queen Victoria Market (QVM) to an 'internationally significant market precinct'. The City is currently developing a master plan for the redevelopment, and has just finalised its second stage of community consultation following the release of draft proposals for the market site. The Trust's advocacy team attended the heritage industry forum convened by the City of Melbourne and the Board of the Queen Victoria Market in May. The forum, 'Rethinking the Queen Victoria Market's Heritage', asked how heritage considerations should be included in the current master planning for the market precinct.

The Trust's Built Environment Committee inspected the site in May to discuss the changes planned. The National Trust recognises the site's complex and layered history and will urge the City to address all heritage values in its master plan. As the site of the first Melbourne cemetery, the market redevelopment could impact on unknown numbers of burials. In the 1970s the Trust was heavily involved in preservation of the market following State Government plans for total redevelopment. In July the Trust hosted an exhibition of Masters student work from the University of Melbourne Urban Design Studio focused on the redevelopment of Queen Victoria Market, and QVM was the subject of our first TrustTalks evening on 7 July.

## Goods Shed No 2

Equiset Grollo Group has applied for a Heritage Victoria permit for the redevelopment of southern end of the No. 2 Goods Shed (north) at 708-710 Collins Street. The proposed works involve the part demolition of the existing Goods Shed north, demolition of the modern office at 708-710 Collins Street and construction of a 34-level tower. Prior to the works to divide the shed into two sections in 2001 to accommodate the Collins Street extension, the No. 2 Goods Shed was approximately 385-metres long and the longest shed in Victoria. We have lodged an objection, given that if approved the proposed demolition will mean that more than 25% of the original shed will have been demolished. The City of Melbourne has also objected.

## Hanging Rock

Following Matthew Guy's intervention in the matter, the State Government has committed \$1m over four years to the Shire of Macedon Ranges for maintenance of the reserve. Simultaneously, Hanging Rock has been recommended for the Victorian Heritage Register. The proposed registration is only for the reserve area (ie the geological feature) and not for the paddocks to the east, which is the freehold area that was identified by the Shire for additional tourism facilities including 100-bed conference centre. In effect the local campaign has been successful in warding off development for the next few years.





For the latest on these current advocacy issues please visit the Trust Advocate blog at [www.trustadvocate.org.au](http://www.trustadvocate.org.au)

## Flinders Street Station

It is unacceptable for a nationally significant and government-owned heritage asset to be left to rot, but that is still the case with the administration building at Flinders Street station. The Victorian government's international design competition looked for the best ideas from around the world to re-energise the station and its surrounds while making sure integral heritage features are maintained. Whilst we were delighted with that undertaking, large areas of the administration building remain in a dreadful condition and government investment in this public asset is long overdue. There have been design competitions in the past that have been unrealised, and our preference is still that the administration building be restored and reused in a mixture of ways to maximise community and business benefits afforded by the scale and location of the building. A business case for the \$1+ billion winning design is apparently being developed but in the meantime the administration building desperately needs repair and reuse. The \$10 million estimated in 2005 needed for repair may now likely be in excess of \$40 million, and that is the commitment we are now seeking.

## Commonwealth Heritage Strategy

In May we hosted a consultation session held by the Commonwealth for 30 industry professionals in Victoria. The draft National Heritage Strategy has been met with a healthy dose of scepticism from most parties. Our national representatives, the Australian Council of National Trusts, coordinated a national response. The focus on the pre-election commitment of the Green Army Program has been wedged uncomfortably into the draft. The reality is that the funding of \$525 million over

4 years for the Green Army makes the \$1.4m over three years for Community Heritage and Icons (capital works, \$10,000 maximum per project) look hopelessly inadequate.

The strategy is also weighed down by the idea that national government principally deals with assessment and programs for national places. In terms of capital funding that is not unreasonable, however the real value of non-capital programs must be directed to the benefit of management of all heritage places, particularly in terms of national leadership for quality frameworks programs, such as benchmarking standards for heritage trades and skills, and this is a major omission from the draft.

## Marvellous Modernism in the City

Total House was added to the Victorian Heritage Register following the Heritage Council hearing in February. Represented by Susan Brennan SC and with expert evidence from twentieth-century architectural historian Simon Reeves we supported the inclusion of Total House (1965, Bogle & Banfield architects), the significance of which was disputed by the developers. Total House is threatened with demolition with the proposal being considered by the Minister for Planning for a 70-storey 260m mixed-use residential and hotel tower (in an area with a 60m height limit).

Another success is the addition of the former Hoyts Cinema Complex in Bourke Street to the Victorian Heritage Register. Designed by Sydney architect Peter Muller in 1969, it is one of Melbourne's outstanding (and difficult-to-categorise) postwar buildings. Heritage Victoria recommended its inclusion on the register. A hearing was requested by the owners but was then cancelled and the place will now be gazetted onto the register.

## Planning Panels

In May we appeared with expert witness Mr Simon Reeves at the City of Melbourne planning panel C198 (City North). This is the latest heritage amendment to be put forward by the City following C186 ('the CBD 99') gazetted in 2013, and C207 Kensington-Arden-MacAulay (awaiting gazettal). Of particular concern to us in this amendment is the former TAA Building (1965) in Franklin Street by Harry Norris & Associates. Given the failure of the Minister for Planning to accept the C186 planning panel's recommendation to protect ten postwar buildings, this is the next test for protection of our modernist heritage.

We appeared at two consecutive panel hearings protecting significant trees in June. The City of Melbourne's panel hearing for Amendment C212 seeks to protect 140 'exceptional' trees by adding them to the Environmental Significant Overlay and Heritage Overlay. The National Trust and the Significant Tree Committee have been providing advice to City of Melbourne on this matter since 2012, and have high hopes for a good conservation outcome. The City of Casey is also seeking to provide statutory protection for 987 trees on their Significant Tree Register, which was developed back in 2001. Admirably, all River Red Gums in Casey with a trunk diameter of greater than 40 cm have been nominated for protection, some 652 in total.

We also appeared at the Corangamite Shire planning panel C36 in July in support of the heritage amendment, in particular for inclusion of school buildings in Timboon which could be threatened.





## GRANTS ANNOUNCED

# Victorian Heritage Register Places and Objects Fund

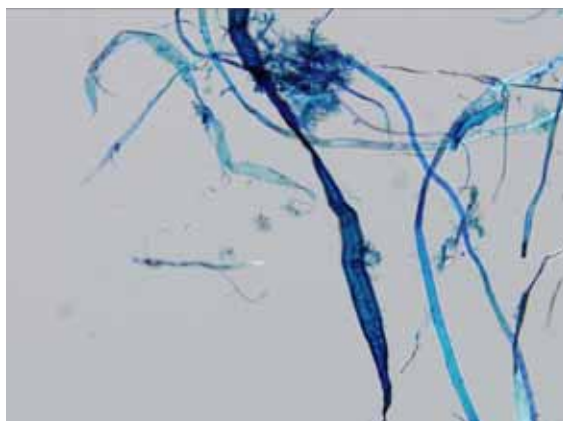
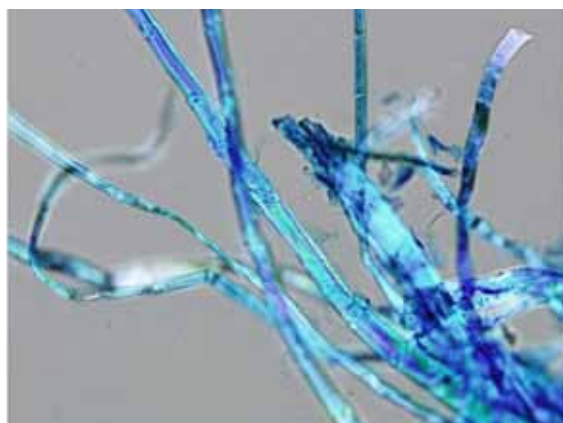
The Victoria Heritage Restoration Fund is pleased to announce grants for 16 community-owned and publicly managed heritage places in Victoria. Administered by the National Trust, round one of the Victorian Heritage Register Places and Objects Fund will provide total financial assistance of \$900,000 to custodians of publicly owned heritage places and objects. The types of work funded include roof restoration, damp works, brick repair, and will support ongoing employment of a range of traditional skills and trades. The full list of successful projects can be found at the VHRF website at [www.vhrf.org.au](http://www.vhrf.org.au). Round two will close to prospective applicants on 22 August 2014 with successful applicants announced in late October 2014.

**If you know a place or object that is eligible to apply for VHRF grant funding please contact the VHRF Administrator at [admin@vhrf.com.au](mailto:admin@vhrf.com.au)**

*(Top) From right, Minister Guy with Father Peter Bickley, St Mary's Bairnsdale and member for Gippsland East MLA Tim Bull at the announcement of a \$75,000 grant for roof conservation at St Mary's church, Bairnsdale. To be match-funded by the church, the funds will assist in reducing the ingress of water and ensure the survival of the colourful frescoes on the church ceiling for the community and tourists to enjoy.*







# Rippon Lea Under the Microscope

*Elizabeth Anya-Petrivna*

The ornate embossed wallpaper decorating the halls of Rippon Lea have been a feature of the interiors since the 1890s and were given a rejuvenating modern treatment in the late-1930s. Apart from the knowledge that they were part of two interior schemes, the identity of the manufacturer was a mystery, but a stylistic similarity did make some scholars wonder if the papers were of Japanese manufacture.

The Japanese pioneered rolled embossed paper; a strikingly lavish example can be viewed in the halls of Labassa. Exuberant and lush organic forms are a feature of this style. The curatorial team wanted to put the speculation to rest - could the Rippon Lea wallpaper indeed be Japanese? For this task forensic conservation techniques were used, putting the science to work. With a generous grant from the Japan Australia Foundation the Trust commissioned the Centre for the Conservation of Cultural Material to perform the investigation. They used state-of-the-art technology to determine the material composition of the two wallpapers.

The conservators were searching for a particular material—Japanese papers are made from ingredients of Mulberry pulp, or kozo. If this pulp was present in the Rippon Lea paper then we would have a match. The conservators subjected the paper fibres to a number of tests, including microscopic and light analysis, as well as examination by spectrometer.

The findings are exciting. They determined that the fibres are consistent with kozo and were present in both samples of paper. Similar pigment and cells from cereal grains were also found. The next step in the research is to try again to source the pattern in wallpaper pattern books with the help of international wallpaper scholars.

*(Images clockwise from left) 1. Rippon Lea hall and stair landing. 2: Detail of wallpaper in Rippon Lea hall. 3. Rottman Strome & Co wallpaper at Labassa. 4. Comparison of primary fibres of Labassa (top) and Rippon Lea (bottom) wallpapers.*



# Notice of Board Election, 2014

## Vintage Clothing Success

Earlier this year, Como House was inundated with stylish bargain hunters for the Trust's annual Vintage Clothing Sale. The Trust would like to thank the generous members who sourced quality vintage items from their own collections, as well as from friends, family and acquaintances. A record crowd attended the sale, which generated \$50,000 towards the conservation of the Trust's extensive costume collection, an amount that more than doubled from last year.

Volunteers Nance Houen, Libby Howcroft and Deborah Bannister did an extraordinary job organising the sale, and a special thanks also goes out to the other tireless volunteers who worked over the weekend to help the event be such a success. The next sale is due to take place in March 2015, so we encourage members to keep aside any unwanted vintage clothing, millinery, haberdashery, linen or fabric that might catch the eye of a thrifty style-seeker!

*(Top) Eager crowds line up for the doors to open at Como's annual Vintage Clothing Sale.*

## Martin Purslow, Company Secretary

In accordance with the Constitution of the National Trust of Australia (Victoria), two Directorships will become vacant in November 2014. Retiring directors are eligible for re-election.

Nominations are invited for Directorships and must be received by the Company Secretary by 5.00pm on Saturday 4 October 2014 at the Registered Office of the National Trust of Australia (Victoria), Tasma Terrace, 4 Parliament Place, East Melbourne, 3002. Nomination forms are available from the Registered Office.

Each candidate is required to lodge a background summary not exceeding 100 words and a photograph with their nomination. This summary should include age, academic qualifications, awards, service to the National Trust, involvement in preservation and conservation matters, offices held and date of joining the National Trust.

If a vote is required ballot papers will be sent to members for a postal ballot. The completed ballot paper must be returned by 5.00pm Friday 14 November 2014, addressed to the 'Returning Officer' at the Registered Office of the National Trust of Australia (Victoria), Tasma Terrace, 4 Parliament Place, East Melbourne 3002 in the envelope provided. The election results will be announced at the 2014 Annual General Meeting and published in the following edition of VicNews.

## Close of Voting Roll

Please note that the voting roll will close at 5.00pm Monday 6 October 2014 and only members who are financial at that time will be eligible to vote.

## 58th Annual General Meeting

Members are advised that the AGM will be held on Saturday 15 November 2014 at Mulberry Hill, 385 Golf Links Road, Langwarrin South, Victoria, 3911.

# HERITAGE PHOTOGRAPHY

**Accredited and Professional  
Photography Services Includes:**

- Historical Architecture
- Antiques and Heirlooms
- Artworks and Collectables
- Gardens and Environment
- Family Events

**Phone: 0417 513 517**

**[info@stevensklifas.com.au](mailto:info@stevensklifas.com.au)**

**[www.stevensklifas.com.au](http://www.stevensklifas.com.au)**

JUSTIN BISHOP

*Style & Design*

EST<sup>D</sup> 2005

**COMPLETE  
INTERIOR DESIGN  
SERVICE**

*Specializing in*

**PERIOD RESTORATIONS,  
RENOVATIONS, EXTENSIONS  
& NEW BUILDS**

**KITCHEN & BATHROOM DESIGN**

**[www.justinbishop.com.au](http://www.justinbishop.com.au)**

**0419669949**



# New Happenings at the City Watch House After Dark



## Shadows of Angels

Set within the gritty city slums of Australia in 1929, *Shadows of Angels* explores the true femmes fatales of Australia, showcasing the desperate lives and dangerous minds of the female criminal in this gripping piece of theatre.

This October, TBC Theatre in partnership with the National Trust will present an arresting and immersive theatrical experience like no other. The historic City Watch House will play host to a three-week season of the acclaimed production.

From the moment they arrive the audience will be whisked back to the gritty streets of late-1920s Melbourne. They'll be guided through the graffitied cells, iron-barred exercise yards and echoing hallways of Melbourne's historic City Watch House where they will bear witness to the tragic and dramatic confessions of four 'fallen angels'.

*Shadows of Angels* runs for a limited season from 12 October to the 2 November at the City Watch House, Russell Street, Melbourne.

For further details on show times and ticket prices visit [www.tbctheatre.com/shadows-of-angels](http://www.tbctheatre.com/shadows-of-angels)



## A Night at the Watch House

Leave your liberties at the door as you take part in Melbourne's latest after-dark event.

'A Night at the Watch House' is a new night tour being offered to visitors at the Old Melbourne Gaol. The tour was created to enable visitors to experience a building that was in operation up until 1994 as a fully functioning Watch House. The recent history of this iconic building lends itself to an after-dark exploration of a site that housed a vast array of Melbourne's criminal underground.

Visitors are absorbed in the criminal world of bygone days as they participate in an experience set in the original cell block inhabited by the likes of Squizzy Taylor and Chopper Read.

This experience will appeal to those enamoured of 'dark tourism'. The tour is an immersive experience whereby visitors are arrested by a Police Sergeant for crimes committed. Visitors will find themselves haunted by the experiences offered in the cat and mouse entertainment that is 'A Night at the Watch House'.

*(Please note this tour includes: loud noises, confined spaces and is conducted in the dark. Recommended for 16 years and over).*

For bookings visit [www.nationaltrust.org.au/vic](http://www.nationaltrust.org.au/vic) or phone 03 8663 7228.



## Watson: Who's Afraid of the Dark?

What are you afraid of? A cold breath on the back of your neck when you're alone? A strange voice coming from a child's room?

Well-known for their brand of high-energy, groundbreaking comedy, Adam McKenzie and Tegan Higginbotham are Watson and are bringing their brand new show *Watson – Who's Afraid of the Dark?* to Melbourne for the 2014 Fringe Festival.

Be prepared for a terrifying night of scary stories at The City Watch House (Old Melbourne Gaol) as the award winning comedy group guides you through the entire venue encountering numerous scenes, performers and adventures and giving you the most bone-chilling night of your life!

This energetic experience will unfold as the audience learns that there is more to this terrifying lock-up than meets the eye. The stories start coming to life as Watson race to protect the audience and escape with their lives. The show promises to deliver a completely interactive and scare-packed comedy.

Everyone learns that breaking out of a haunted jail is, not surprisingly, difficult.

*Watson – Who's Afraid of the Dark?* runs for a limited season from 21 September to 2 October at the City Watch House, Russell Street, Melbourne.

Discounted tickets will be available for National Trust members. For further details on show times and ticket prices, visit [melbournefringe.com.au](http://melbournefringe.com.au) (on sale 6 August).

# What's on?

Visit [nationaltrust.org.au/vic/events](http://nationaltrust.org.au/vic/events) for new events and additional information on events listed below.

## Feature Events



### The Antipodean Steampunk Show

Contemporary technology and Victorian styling will collide in spectacular fashion during The Antipodean Steampunk Show at Tasma Terrace.

If today's technology had been introduced in the 19th century, what would the world look like? The Antipodean Steampunk Show explores this fascinating reimagined world in a fascinating mash-up of past, future and fantasy.

The Antipodean Steampunk Show is the first major steampunk exhibition in Australia! Come and marvel at transformed jewellery, shoes, time machines, ray guns, photography and music players.

Date & time: Until Friday August 8, 2014  
Daily 10am – 4pm

Price: Adult \$10, Concession \$7.50, Child \$5,  
National Trust members: \$5

Where: Tasma Terrace, 6 Parliament Place, East Melbourne



### Love, Desire & Riches

Love, Desire & Riches: The Fashion of Weddings is a collection of over 50 famous and rarely seen wedding gowns (and accessories) sourced from around the world.

The collection spans over 200 years of fashion, including pieces from leading designers such as Valentino for Princess Marie Chantal of Greece. A mini retrospective of leading Australian designers Akira Isogawa and Collette Dinnigan will showcase their fashion career.

Celebrity gowns include dresses designed for Jennifer Hawkins (Maticevski) and Kylie Clarke (Alex Perry) to film and television pieces worn by Kylie Minogue (as Charlene in Neighbours) to Kate Winslet, Gwyneth Paltrow and Meryl Streep.

A number of public programs will also occur throughout the exhibition.

For more information and bookings please visit [nationaltrust.org.au/vic](http://nationaltrust.org.au/vic) or call the National Trust Bookings Office on 03 9656 9804.

Date & time: Daily 10am – 4pm until Tuesday September 30, 2014. (Last entry at 3.30pm)

Price: Adult \$15, Concession \$12, Child \$9, Family (2 adults and 2 children) \$35

National Trust Members: Adult \$10, Concession \$7, Child \$4, Family (2 adults and 2 children) \$20

Where: Rippon Lea House & Gardens, 192 Hotham Street, Elsternwick



### Pirate Sunday at Polly Woodside

Arrrhg!!! Come and join us for Pirate Sunday on Polly Woodside!

Get your best pirate gear out and hop onboard to help us search for hidden treasure, play tug of war and have your face painted!

Date & time: Sunday August 3, Sunday September 7,  
Sunday October 5, 2014, 10am – 4pm

No bookings required.

Price: Adult \$16, Concession \$13, Child \$9.50, Family \$43  
(2 Adults and 2 Children), Single Family \$32 (1 Adult and 2 Children), Additional Children \$5

Where: Polly Woodside, 21 South Wharf Promenade,  
South Wharf

Contact: Polly Woodside on 03 9699 9760  
or visit [pollywoodside.com.au](http://pollywoodside.com.au)



### Open House at the Portable Iron Houses

Open House at the Portable Iron Houses is a great opportunity to explore the three portable iron houses on sites which are among the few pre-fabricated iron buildings remaining in the world. During the gold rush thousands of portable buildings were imported from Britain – shops, houses, churches and even a hospital and an iron theatre.

Very few such buildings remain in the world so this is a unique opportunity for you to explore these original 'kit' homes. The visit also includes the opportunity to watch an informative DVD on importation of pre-fabricated buildings during the 19th Century.

Bookings are not required but private groups of 6 or more can be accommodated by appointment.

Dates & time: Sunday August 3, Sunday September 7,  
Sunday October 5, 2014, 1pm – 4pm

Price: Adult \$5, Concession \$3, Children \$3. Family \$10 (2 adults + 2 children), National Trust members are free.

Where: Portable Iron Houses, 399 Coventry Street, South Melbourne

For enquiries please call 03 9645 7517 or 03 9699 2172,  
or email [pih@natrust.com.au](mailto:pih@natrust.com.au)

### Music for Family and Close Friends

Belura - Twilight Chamber Music at Rippon Lea - since 1994 one of Melbourne's longest running and most loved chamber music series. The historic ballroom at Rippon Lea features a warm acoustic and close sightlines, providing an intimate setting for chamber music in the way it was originally intended. Music by Schubert, Tchaikovsky and Shostakovich.

Date & time: Sunday August 17, 2014, 3pm

Price: Adult \$40, Concession \$30, Children and Students (under 25 years) \$20

National Trust Members: Adult \$35

Bookings required - 03 9527 2851  
or email [info@teamofpianists.com.au](mailto:info@teamofpianists.com.au)

Where: Rippon Lea House & Gardens, 192 Hotham Street, Elsternwick

## August 2014 - October 2014

Please note: The event details below are correct at time of printing, but are subject to change.

Visit [www.nationaltrust.org.au/vic](http://www.nationaltrust.org.au/vic) for updated information and to purchase tickets.

### Parisian Preludes

Jocelyn Ho. First-prize winner, Australian National Piano Award 2010. Music of Louis Couperin, Chopin, Debussy, Tristan Murail.

Date & time: Sunday August 31, 2014, 3pm

Price: Adult \$40, Concession \$30, Children and Students (under 25 years) \$20, National Trust Members: Adult \$35

Bookings required - 03 9527 2851 or email  
[info@teamofpianists.com.au](mailto:info@teamofpianists.com.au)

Where: Glenfern, 417 Inkerman Street, East St Kilda

### Historical Guided Walk: Tents to Terraces

Until land sales occurred in 1852 early migrants were living in tents in "Canvas Town".

Take a walk back in time where you will hear about the orphanages in the area, the growth of schools, churches, community services and about the influence of the local Chinese community of the time.

You also have the opportunity to view the three pre-fabricated corrugated iron houses which date back to the gold rush years.

Date & time: Sunday Sept 7, 2014, 10.30am – 12.30pm

Price: Adult \$20, Concession \$18, Children \$10, National Trust Members: Adult \$15, Concession \$7, Children \$7

Bookings required - 03 9645 7517 or 03 9699 2172  
or email [pih@natrust.com.au](mailto:pih@natrust.com.au)

Where: Portable Iron Houses, 399 Coventry Street, South Melbourne



### Como House Open Day

Join us for a guided tour of the stunning Como House. The tours will cover the history of Como and the families that have lived on the property. Tours run for approximately 45 minutes.

Dates & time: Wednesday August 6, 2014, 2pm and 3.30pm, Saturday August 23, 2014, 10.30am – 3pm,  
Wednesday September 10, 2014 2pm & 3.30pm,  
Saturday September 13, 2014, 10.30am – 3pm

Price: Adult \$15, Concession \$12, Child (15 years & under) \$9, Family (2 adults + up to 2 children) \$35, National Trust members are free.

Bookings are not required however there is a maximum of 15 people per tour. Tickets are available for purchase from the Como Shop, opposite the Stables of Como Cafe.

Where: Como House & Garden, Cnr Williams Rd & Lechlade Ave, South Yarra



### Open House at Labassa

Labassa is a stunning heritage property noted for its opulent 19th century interiors.

Tours of the house are included in entry, with tours of the interior at 11.00 am and 2.30 pm. There is also an external tour at 12.30pm.

Tea rooms operate throughout the day. No bookings required.

Date & time: Sunday August 17, Sunday September 21 & Sunday October 19, 2014, 10.30am – 4.30pm

Price: Adult \$10, Concession \$8, Children \$4, Family \$20 (2 adults + 2 children)

Where: Labassa, 2 Manor Grove, Caulfield North



### Jewels from a European Treasure

Don't miss Paul Badura-Skoda (piano) - world-renowned interpreter's final performance in Melbourne at close quarters, featuring Bach's Partita no. 1, Mozart's Sonata K 310 and the Ballade no. 3 of Chopin.

Date & time: Sunday September 21, 2014, 6:30pm

Price: Adult \$40, Concession \$30, Children and Students (under 25 years) \$20, National Trust Members: Adult \$35

Bookings required - 03 9527 2851  
or email [info@teamofpianists.com.au](mailto:info@teamofpianists.com.au)

Where: Rippon Lea House & Gardens, 192 Hotham Street, Elsternwick

### Faust to Fantasie

Elizabeth Sellars (violin), Rohan Murray (piano) play music of Bach, Schubert and Franck.

Date & time: Sunday September 28, 2014, 2pm

Price: Adult \$40, Concession \$30, Children and Students (under 25 years) \$20, National Trust Members: Adult \$35

Bookings required - 03 9527 2851  
or email [info@teamofpianists.com.au](mailto:info@teamofpianists.com.au)

Where: Barwon Park, 105 Inverleigh Road, Winchelsea

### Lanes & Byways: Historical Guided Walk

Join a 1.5 hour guided walk around the lanes and byways of Emerald Hill (the original name for South Melbourne).

South Melbourne has retained an extensive network of lanes where you will discover hidden treasures and learn a little about the harsh realities of life for migrants in the 19th Century. The role of the night soil men, the Chinese influence in the area and politics of the day area all featured.

You also have the opportunity to view the three pre-fabricated corrugated iron houses which date back to the gold rush years.

Date & time: Sunday October 5, 2014, 1.45pm - 4pm

Price: Adult \$20, Concession \$18, child \$10

National Trust members: Adult \$15, Concession/  
Children \$7

Bookings required - 03 9645 7517 or 03 9699 2172  
or email [pih@natrust.com.au](mailto:pih@natrust.com.au)

Where: Tour departs from the Portable Iron Houses, 399 Coventry Street, South Melbourne

### Amazing Youth Makes Music

Kevin Kanisius Suherman (piano and conducting), Jaden Taveira (piano, with string players). Music of Chopin, Suherman and Bach.

Date & time: Sunday October 12, 2014, 3pm

Price: Adult \$40, Concession \$30, Children and Students (under 25 years) \$20, National Trust Members: Adult \$35

Bookings required - 03 9527 2851  
or email [info@teamofpianists.com.au](mailto:info@teamofpianists.com.au)

Where: Glenfern, 417 Inkerman Street, East St Kilda



### Lost Traditions

Lost Traditions invites you to explore our shared cultural heritage and find out how the traditional artisan and heritage skills shaped our history through talks, exhibitions, interactive workshops and events.

Artists will use the context of Gulf Station to re-interpret the traditional skills in modern ways.

Date & time: Saturday October 18, 2014, 10am - 4pm

Price: Adult \$15, Concession \$12, Child \$9, Family \$40 (2 adults & 2 children) (Admission also includes entry to the Heritage Farm)

Where: Gulf Station, 1029 Melba Highway, Yarra Glen



### Spring Opening at La Trobe's Cottage

Enjoy a special spring opening of La Trobe's Cottage, celebrating the 175th anniversary of the arrival of Charles Joseph La Trobe, Victoria's first Governor, and his family in early Melbourne. This special spring opening launches the weekly Sunday afternoon openings of the Cottage, which continue until April 2015. La Trobe's Cottage was the home of Charles Joseph La Trobe, the first Governor of Victoria. The cottage today includes remnants of the small prefabricated house that La Trobe brought with him by ship from England in 1839 to produce a home for his family. The original parts of the cottage are one of the oldest surviving timber structures in Victoria. It contains many original furnishings and other artefacts belonging to the family.

Date & time: Sunday October 5, 2014, 2pm - 4pm

Price: Adult \$5, Concession \$4, Children \$4, Family \$12 (2 adults & 2 children), National Trust Members FREE

No bookings required.

Where: La Trobe's Cottage, Cnr Birdwood Avenue & Dallas Brooks Drive, The Domain, Melbourne

### Shadows of Angels (at Old Melbourne Gaol)

TBC Theatre in partnership with the National Trust present an arresting and immersive theatrical experience like no other this October. The historic City Watch House will play host to a three-week season of the acclaimed production, *Shadows of Angels*, which is returning to Melbourne for its fourth season. The play, written by emerging playwright Fleur Murphy, premiered at the Adelaide Fringe Festival in 2012, and received acclaim at the SheppARTon Arts Festival and the Owl and the Pussycat Theatre in Richmond in 2013.

Date & time: Sunday October 12 - Sunday November 2, 2014, 5.30pm - 7.30pm

Price: Adult \$30, Concession \$25, National Trust members \$20

Bookings required - [bookings@tbctheatre.com](mailto:bookings@tbctheatre.com)

Where: City Watch House, 377 Russell Street, Melbourne

## Branch Events

### NORTH EAST WOMEN'S AUXILIARY

#### Fundraising film day - Philomena

Join us for a fundraising film day at the unique Swanpool theatre for a showing of *Philomena*, the 2013 drama film directed by Stephen Frears, based on the book *The Lost Child of Philomena Lee* by journalist Martin Sixsmith. Starring Judi Dench and Steve Coogan, it tells the true story of Philomena Lee's 50-year-long search for her son.

Drinks and nibbles on arrival, basket luncheon followed by movie.

Date & time: Monday September 8, 2014, 11.30am

Price: All tickets: \$20

Advance bookings required (for catering purposes)  
- 03 5743 1570 or Rosemary Gordon on 02 6033 3681.

(Tickets available at the Monday August 11th Auxiliary meeting at Raffety's Convention Room, 55 Nunn St, Benalla)

Where: Swanpool Theatre, Midland Hwy, Swanpool (South of Benalla)

### GEELONG REGION

#### Lunch at The Heads Restaurant

Enjoy a two course menu at the iconic venue, The Heads Restaurant, and listen to a well-known identity from the Barwon Estuary Heritage Centre who will enlighten us of the area that encompasses Barwon Heads.

Date & time: Tuesday August 26, 2014, 12pm

Price: \$38 per head. (Drinks at bar prices)

Where: The Heads Restaurant, Jetty Road, Barwon Heads

Bookings essential. Please RSVP by Friday August 15 to Ken MacLean on 03 52542876 or [faken@bigpond.com](mailto:faken@bigpond.com)

#### Old Geelong Gaol Visit

Built of local bluestone, brick and volcanic rock, the Gaol was constructed between 1849 and 1864. It was designed by Henry Ginn, Colonial Clerk of Works, and based on the Pentonville (UK) model.

Date & time: Tuesday September 30, 2014 at 2pm

Where: The Old Geelong Gaol, Myers Street, Geelong. (Meet at Entrance).

Price: Gold Coin Donation (to Rotary)

Please RSVP to Pauline and David Walker on 03 5289 1569



## National Trust Branches

The National Trust has a branch network across rural and metropolitan Victoria. Branches engage in a range of activities, including:

- conducting regular meetings and communicating with local Trust members;
- providing advocacy on local heritage issues,
- conducting heritage festival and other events
- partnering with local government to provide a heritage awards program

Visit [www.nationaltrust.org.au/victoria](http://www.nationaltrust.org.au/victoria) for a map of National Trust branches in Victoria. To sign up for your local newsletter or to find out more, contact your local branch representative:

**Ballarat & Region:** Evelyn Ebbs  
[natrustballarat@gmail.com](mailto:natrustballarat@gmail.com)

**Bass Coast:** Ross Lloyd  
0408 546 886 | [loyd.ross@yahoo.com.au](mailto:loyd.ross@yahoo.com.au)

**Bendigo:** Elaine Doling | 5446 7409

**Casey-Cardinia:** Ruth Crofts | 9707 1518

**Dandenong Ranges:**  
Elizabeth Bently-Stevens | 9754 8756  
[elizabethstvn@yahoo.com.au](mailto:elizabethstvn@yahoo.com.au)

**Geelong & Region:** David Walker  
5289 1569 | 0409 141 755

**Inner-West:** Cyril Curtain | 9397 2421

**Macedon Ranges Branch:** Phyllis Boyd  
0417 059 476

**Mornington Peninsula:** Judy Walsh  
5988 9853

**Mt Alexander:** Bill Taylor  
0428 138 630 | [adco@bigpond.net.au](mailto:adco@bigpond.net.au)

**North East:** Pamela Thomas  
[pamelathomas@optusnet.com.au](mailto:pamelathomas@optusnet.com.au)

**Port Fairy:** Andrea Lowenthal  
[andreaml452@gmail.com](mailto:andreaml452@gmail.com)

**Portland:** Gordon Stokes  
0438 012 352 | [gordon.stokes@bigpond.com](mailto:gordon.stokes@bigpond.com)

**Wimmera & Region:** Helen Curkpatrick  
[haven273@wimmera.com.au](mailto:haven273@wimmera.com.au)

# LOVE DESIRE & RICHES

## The Fashion of Weddings

1 July - 30 September • Open daily 10am-4pm

A collection spanning 200 years of famous and rarely seen wedding gowns from world-leading designers and celebrities.

### Rippon Lea House & Gardens

192 Hotham Street, Elsternwick

Tram 67 to stop 42 or

Sandringham train to Rippon Lea Station

**Bookings** call 03 9656 9804 or [nationaltrust.org.au/vic](http://nationaltrust.org.au/vic)

Proudly sponsored by:

WARWICK



glasshaus  
interior | flower | garden design

MARIANA HARDWICK

*Cristina Re*

air aroma®

redwhite

CNK FOOD  
DESIGN

\*easy  
weddings  
YOUR PERFECT DAY MADE EASY .COM.AU

PURPLE RIBBON WEDDINGS

Hilton  
ON THE PARK-MELBOURNE

HARTS