

VICTORIAN NEWS

 NATIONAL TRUST

May 2012



Celebrating our living heritage

P3 | UPDATE ON COMO HOUSE & GARDEN

P7 | HONOURS FOR ELIZABETH AUSTIN

P12 | ENVIRONMENTAL HERITAGE



Events in Brief: May 2012 to August 2012 (see pages 13 -18)

National Trust of Australia (Vic)

Tasma Terrace, 4 Parliament Place, East Melbourne, Victoria 3002

Telephone: (03) 9656 9800 Facsimile: (03) 9650 5397 Email: info@nattrust.com.au

www.nattrust.com.au

Message from the Chairman

The Board of the National Trust in Victoria recently agreed to accessibility improvements at a number of Trust sites to be progressed over the winter months.

One of our most significant projects will result in a new road entrance, car and coach parking, landscaping and an amphitheatre for performances at Mulberry Hill on the Mornington Peninsula. This work is made possible by the generous bequest of the late Spencer Leason, and a new park will be created which will bear his name.

The Trust has also been fortunate to receive \$150,000 in grant aid for Endeavour Fern Gulley at Red Hill from the Victorian Department of Sustainability and Environment. The grant, our largest in recent memory for a "green project", will support the Trust in our work to enhance management, interpretation and accessibility of this rich site.

Over \$500,000 has been pledged to support projects at Rippon Lea House & Gardens this winter including \$350,000 for the new children's education garden and reinstatement of Victorian-era fencing to



Hotham Street. The "secret garden" project aims to provide new reasons to engage with, and learn from, Rippon Lea.

Our focus on natural heritage in this May edition is timely with our significant environmental heritage win in Bacchus Marsh. The Avenue of Honour will remain

intact due to a community campaign involving a range of organisations. I congratulate everyone involved. I should also thank Dr Sue Hughes, our local Branch and Members who advocated on behalf of this incredible heritage asset. This is a great win for the community, heritage and common sense.

We also want to thank Members for contacting us regarding the announcement by the National Trust of Australia (NSW) in March this year of their seven new inductees into the 100 Living Treasures list. It is a list that is decided by public vote and there are many positive achievements by the 100 Living Treasures that deserve recognition.

However; while the various States and Territories of the National Trust of Australia often work together on projects, we wish to clarify that this program is an independent initiative of the National Trust in NSW and is not endorsed nationally. The Trust in Victoria was not involved in the process including either the nominations or the announcement of the recipients.

Thank you for your ongoing support.

A handwritten signature in blue ink, reading "Graeme L Blackman".

Dr Graeme L Blackman
Chairman
The National Trust of Australia (Vic)

Message from the CEO

This issue of Trust News showcases how we are embracing the notion of "living" heritage: providing meaningful and enjoyable ways to keep heritage "alive", now and into the future.

The innovative Cells for Writers program and The Kelly Project event at Old Melbourne Gaol are showcased in this issue along with a reminder that 170 plus events are underway as part of this year's Heritage Festival, coordinated by the Trust across Victoria. I hope that many of you have found our new heritage iPhone app useful in planning your participation. This is the first of its type in Australia.

I would like to thank everyone involved in the Heritage Festival this year, particularly all those dedicated staff, volunteers and Branch members who have helped deliver such a vibrant program.

Volunteers have also been busy promoting the Trust's activity in the community alongside our garden and head office staff at the Melbourne International Flower & Garden Show.

At Rippon Lea more than 2,500 people attended the Easter Fun Day, well exceeding expectations. At Como, the Vintage Clothing Sale in March raised over \$15,000 for the Trust's costume collection, more than double last year's amount.

I thank everyone involved for their generous time commitment. All of these events make a great contribution to our wider advocacy work and I hope you have been able to get out and sample what is on offer.

As outlined by our Chairman much of our significant winter investment centres on improvements to our gardens, parks and open spaces this year. Additional planning works are also taking place at Gulf Station, Nehill Farm, the Barwon Park Estate and Mooramong to improve accessibility and sustainable activity.

I am delighted – as I am sure all members are – that this focus on our green spaces is now being recognised with our recent success in securing further external funding. I hope as members that you enjoy the results of this investment in the future.

A handwritten signature in blue ink, reading "Martin Purslow".

Martin Purslow
CEO
The National Trust of Australia (Vic)

Update on Como House & Garden



COMO HOUSE & GARDEN

Following a period of public consultation, the Trust is applying for a new permit to improve facilities and accessibility at Como House & Garden.

Current permit conditions severely restrict community accessibility and the Trust must find new ways to get people back to Como.

The permit application will no longer include a new pavillion but it will focus on improvements to the cafe area and include work on car access from Williams Road. No significant trees will be affected by the proposal.

Como is now operating a bookings-based model open to group tours and private functions. Public events will also continue to be staged.

The Trust looks forward to an outcome that can enable the community to enjoy Como well into the future.

Tasma Rejuvenation



Members may have seen some changes at the Tasma Terrace buildings recently.

As well as a new Trust shop and gallery space, our Commune Café is under new management. It will soon include murals celebrating the history of Tasma including the Trust's role in saving it in the 1970s.

The restoration of Terrace 2 is now underway – as part of this work the Victorian interior is being restored and presented with items from our collection to provide the public with a truly unique experience of Melbourne in the 1880s.

Showcasing the Trust

The Trust's presence at the *Melbourne International Flower & Garden Show* has grown in the past three years from a trestle table to a fully fitted out marquee this year.

The event gave us a fantastic opportunity to showcase our beautiful gardens and properties.

Many thanks to the hard work of our staff and volunteers and we also thank our members who came along and said hello.

Our heritage plants are available to buy at the expanded Rippon Lea nursery.



STAFF, VISITORS AND VOLUNTEERS AT THE MARQUEE



Gaolhouse rocks Gold FM!



A PHOTO OF BRIG FROM GOLD FM TAKEN AT NIGHT DURING HER STAY AT THE OLD MELBOURNE GAOL.

Old Melbourne Gaol featured on prime time radio recently, with Gold 104.3FM breakfast host, Brigitte Duclos, losing a bet to her co-host Anthony 'Lehmo' Lehmann and having to spend the night in Gaol.

Prior to her visit, our very own Sean de Courcy, Operations Manager for the Gaol, did an on-air interview which was highly entertaining and spooked Brig. Sean took in some whips and other props to the radio studio and surprised Brig on air by making a real racket!

According to Gold FM staff, Brig was legitimately frightened about the sleepover, making it all the more entertaining for listeners.

The video of Brig's sleepover was displayed on the Gold FM website, YouTube and Facebook pages, with Brig creeping through the dark at the Gaol stating: "And now I am not having fun anymore. It's dark. I am NOT sleeping here!"

Thanks to Sean and staff for their hard work in making the Gaol such a memorable experience for Brig and her Gold FM team.

Cells for writers project



A new project at Old Melbourne Gaol will provide an innovative and highly inspiring canvas for writers.

The National Trust's Cells for Writers Project is a partnership with Writers Victoria and offers a small group of Victorian based writers a six week placement at the Gaol.

Each writer will be housed in a solitary cell with just a chair, table and their imagination.

The vivid, creative world of the writer will be expanded when they enter the Gaol - the site where 133 people including infamous bushranger Ned Kelly were hanged.

The project is a practical way to inspire and engage with the vibrant artistic community of Victoria by offering unique spaces for writers to work uninterrupted on their manuscripts.

At the completion of the six week placement, all participants of the project will be required to present their written pieces in the Courthouse.



Kids' birthday parties sail the high seas at Polly Woodside

Ahoy there! Kids can step aboard the Polly Woodside and have their very own pirate or sailor birthday party adventure on Melbourne's favourite tall ship.

Polly Woodside is a unique and exciting venue for children's parties. Built in Belfast in 1885, she sailed 1.5 million kilometres around the globe and is one of the few deepwater tall sailing ships still remaining today.

There's an exciting treasure hunt adventure for our pirate parties while our sailor parties help kids to discover real sailing skills.

Two sessions are available daily and they run all year round with games, stories and fun activities and include Polly themed invitations and pirate or sailor souvenirs. Recommended for ages 5 to 12. For more information go to www.pollywoodside.com.au



New Seasonal Operating Hours

Polly Woodside will be open from Wednesday to Sunday from May through August. For the two weeks of the July school holidays it will open seven days a week.

Rippon Lea will be open from Thursday to Sunday between May and August.

Opening hours for Polly and Rippon Lea are from 10am to 4pm during these months.

Como House & Garden has moved to a bookings-based model for group tours but is not open for walk up visitors in the short term.

For all of our opening times visit www.nattrust.com.au

Ships, scoundrels and scallywags – school holiday fun!

There's plenty to do during the school holidays in July 2012.

The National Trust offers exciting ways to entertain your kids over the school holidays.

All you need to do is load the kids in the car, jump on a tram or walk to one of our many properties for an action packed day you won't forget.

Over the July school holidays, we'll offer courtroom dramas and bushranger tales at the Gaol and maritime fun with your mates aboard Victoria's most famous tall ship – *Polly Woodside*.

For more information and bookings visit www.nattrust.com.au/events



Calling all volunteers!



VOLUNTEERING AT MULBERRY HILL

The National Trust's portfolio of properties in the Mornington Peninsula need your help.

We are looking for volunteers at McCrae Homestead, The Briars, Mulberry Hill and Endeavour Fern Gully.

Volunteers are needed to help with guided

tours of the properties, gardening, cleaning, front of house, events and car park attendants (mostly for Endeavour Fern Gully).

You can volunteer at one property or all four if you wish and training is provided at all the sites.

For more information please contact Kate Moody on (03) 9656 9800 or email volunteers@natstrust.com.au

A Trust tribute to all mums this Mother's Day

With Mother's Day fast approaching, what better way to spoil your mum than indulging her at one of our special events.

Celebrate Mother's Day at Mulberry Hill with a delectable Devonshire Tea or at Lake View House in Chiltern with an ample afternoon tea in the cottage garden.

At Labassa, indulge in a Parisian High Tea or for the musically-minded visit Barwon Park for a beautiful classical music concert.

Relish Devonshire Tea in the Ballroom at Rippon Lea, listen to live music, wander the gardens or row the lake!

For mothers with a hankering for history, there's a tour of La Trobe's Cottage. She receives a flower too, in remembrance of the La Trobes, who both loved their garden.

Check for all booking details in the Events section on pages 13 to 18.



ROB YOUL OAM



LESLEY BARNES OAM SURROUNDED BY HER FROGS (FRIENDS AND RELATIVES OF GULF STATION)

Two of our wonderful volunteers Lesley Barnes and Rob Youl have been recognised in the Australia Day 2012 Honour's List.

Both Lesley and Rob were awarded in the Medal (OAM) of the Order of Australia in the General Division.

A former Board member and long-serving volunteer, Lesley was recognised for her contribution to the preservation of Australia's heritage and service to the community in the arts and as a volunteer.

Rob Youl, a member of our Landscape Committee, was recognised for his dedication to improving conservation outcomes across the state

Honours for a generous lady



TRUST BOARD MEMBER KRISTIN STEGLEY WITH THE HON MARY WOOLDRIDGE ACCEPTING ELIZABETH AUSTIN'S INDUCTION INTO THE VICTORIAN HONOUR ROLE OF WOMEN ON BEHALF OF THE TRUST AND BARWON PARK.

Elizabeth Austin of Barwon Park is notable for being the most prominent woman philanthropist of her generation and 101 years later she has been inducted on to the Victorian Honour Roll of Women.

Each year, the Victorian Honour Roll of Women recognises and celebrates truly remarkable women across Victoria who through their vision, leadership, commitment and hard work, have made an exceptional contribution to their communities or areas of expertise.

Described as the country's first female benefactor, Elizabeth gave money to establish the Austin Hospital in Melbourne, today a major institution in Victoria's health system.

Elizabeth settled at Winchelsea in 1841. In 1845 she married Thomas Austin: isolation and economic depression in the 1840s were followed by considerable wealth from wool production and sheep breeding. Elizabeth was widowed in 1871 shortly after the completion of Barwon Park Mansion.

It was in these latter years that she made such a significant contribution to the Victorian community.

When Elizabeth's cook contracted tuberculosis the only place she could receive treatment was the prison hospital.

Elizabeth's response was to begin a 'Hospital for Incurables' to provide care for such sufferers where nowhere else catered for them.



Elizabeth built the Austin Cottages in South Geelong, to accommodate impoverished widows and set up the Victorian Servants Training Institute of Melbourne enabling working-class women to learn a trade.

The new inductees were announced by the Minister for Women's Affairs, Hon Mary Wooldridge as part of International Women's Day celebrations on 6 March 2012 at Parliament House in Melbourne.

Elizabeth Austin was represented at the event by Kristin Stegley, National Trust Board Member.

Souvenirs of the South Sea Islands

The origin of Labassa's name lies in the South Sea Islands and National Trust curators have showcased many delicate ornamental pieces from the region at this stunning property.



John Boyd (JB) Watson purchased the mansion "Ontario" in Caulfield and renamed it Labassa in 1904.

Labassa is named after a Fijian village visited by the Watson family during a Pacific Islands holiday. In fact, the visit had such an impression that JB Watson and his wife Flora Kate called their youngest child Hinemoa after a Maori Princess of New Zealand legend.

During a recent display at Labassa, descendant John Watson donated two artefacts which piece together a little of the story about the Watson's connection to the South Pacific. A tapa cloth and coconut shell were souvenirs from their trip to the South Seas and date from the turn of last century.

Advocacy Update



(left)

Dillingham Estates House

(Yuncken Freeman, 1975) 114 William Street

Estates House was deliberately designed to complement Yuncken Freeman's earlier BHP House (now on the Victorian Heritage Register), as a foil and backdrop, and occupying the same 'plaza' to create an unmatched modernist ensemble.

(right)

National Mutual Plaza (Godfrey & Spowers Hughes Mewton & Lobb with Leith & Bartlett in association, 1961-5) 447 Collins Street.

Occupying the former Western Market site, original plans in the 1950s were to build over the entire site. However; it was recast in the role of half investment office tower and half public plaza. The tower, (with its recent unfortunate loss of marble cladding) and the plaza together are one of the best (and rarest) examples of the modernist planning ethos of towers with plazas.

(far right)

Royal Insurance Building (Yuncken Freeman, 1965) 430-442 Collins Street.

Winner of the Victorian Architecture Medal, the building was the most accomplished of the early pre-cast concrete clad office blocks, leading the field away from the light-weight curtain wall facades of the previous years. In 1965 *Cross Section* remarked that it is 'as an architecture playing it so cool that it makes every other city building in Melbourne look like an overdressed juke box.'

Advocacy has always been a major priority for us at the National Trust. Our large community support base plays a monumental role in this, assisting us in lobbying for the preservation of Victoria's cultural, built and natural heritage.

For more information go to www.natstrust.com.au/advocacy.

The following update provides insight into recent planning issues relating to heritage places and spaces throughout Victoria.

Melbourne CBD Planning Scheme Amendment

The number of places protected by the City of Melbourne in the CBD through local heritage controls has not altered substantially since the early 1980s, and the Trust was therefore pleased to support the Council at the recent Planning Panel in March and April. The Panel considered

the addition of 99 places to the heritage overlay. We were represented by Greg Tobin, Principal of Harwood Andrews Lawyers and our expert witness architectural historian, Rohan Storey.

We argued in support of the inclusion of some interiors, which were proposed to be protected through the planning scheme in Melbourne for the first time. We also strongly argued for the inclusion of a number of post-1945 places for protection, which is also a first for the City of Melbourne.

The images in this Update are some of the buildings proposed for inclusion in the Planning Scheme Amendment.



Scots Church precinct

The demolition of Scots Church Hall (1928) in Russell Street and the adjacent Victoria Car Park (1938) and four storey warehouse (1912) has begun. The site will be developed with a 12 storey glass tower, with principal tenant Westpac. The carpark was the first of its kind in Australia and the former Minister for Planning, Justin Madden, overruled the Heritage Council to allow its demolition. The other two buildings did not have heritage controls.

Castlemaine Police Station VCAT hearing

The Trust appeared at the Victorian Civil and Administrative Tribunal (VCAT) in February to contest the design of the new police station in Castlemaine. We were represented by Barrister Julie Davis and expert witnesses John Briggs and James Holdsworth. We have always been supportive of a new police station at corner of Hargraves Street and Templeton Street, however the community was not in favour of the original design released 18 months ago due its lack of contextual design to the historic civic precinct.



Our appearance at VCAT forced a radical reappraisal of the design last December and required the architects and planners to do much more work to understand local heritage requirements. As a result of our involvement a much altered and improved design was presented and we have made a significant contribution to a better outcome.

Boroondara Heritage Overlays – Planning Panel success

Our appearance at the Planning Panel to consider the Hawthorn Heritage Precincts Study last year helped secure a positive outcome for West Hawthorn Village, the Manningtree Road area, Glenferrie Road Activity Centre area and Lisson Grove area. The building at 733 Glenferrie Road (1902 doctor's surgery and residence) was a particularly contentious issue, its demolition having already been rejected by a VCAT hearing. The Panel has now recommended it for a permanent heritage control. We are now working on further submissions for the City of Boroondara, in particular to support adoption of the Kew Junction heritage precinct.



Heritage Festival 2012 underway across Victoria



Take a look at the events that are running right up to 20 May 2012

The Heritage Festival 2012 is going full steam ahead with over 170 events happening across the state.

We hope that you have had a good look at the Festival program and are able to participate in the many heritage celebrations.

For the first time ever you can download an iPhone App to search for Festival events, accommodation and other local attractions.

For an online program and further information on the Festival see www.natrust.com.au/heritage_festival



Grab a ticket for the inside view of The Kelly Project

The identification of infamous Australian bushranger Ned Kelly's remains made international headlines last year.

A special Heritage Festival event at the Old Melbourne Gaol will see the Kelly Project Team from the Victorian Institute of Forensic Medicine (VIFM) and Heritage Victoria discuss their investigation into the skull that was stolen from the Old Melbourne Gaol in 1978 and believed to belong to Kelly.

The investigation ultimately led to the identification of Kelly's skeletal remains found amongst the remains of other

executed prisoners exhumed from the Gaol in 1929.

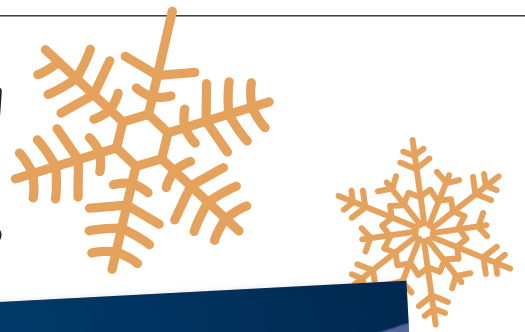
However it did not answer the question: who does the skull belong to?

A presentation and discussion of the processes, research and conclusions will be held on Thursday 17 May from 6.30pm – 8.30pm.

Tickets can be purchased by calling 03 8663 7260 or online via www.natrust.com.au/events.



Trust Kids!



The recent launch of our *Trust Kids!* program has proven to be an enormous success, with children across Victoria signing up to this wonderful free initiative.

Trust Kids! is full of exclusive offers, competitions, parties, prizes and adventures and has been developed to educate children about nature, the environment and our rich Australian heritage.

Be sure to check out our new Winter newsletter, which has plenty of new activities including iPhone Apps and treasure hunts that challenge, educate and reward kids.

Children of household members are eligible to join up – so get them involved today at www.natrust.com.au/trustkids



Gaol night event

Gaol isn't a place we fancy spending too much time; however, it's the perfect place to learn about the colourful and scary past of Victoria.

We're putting on a special *Trust Kids!* Event at the Old Melbourne Gaol and our junior members can win a free pass to this fun event.

To join in the spooky adventure pick up a copy of the *Trust Kids!* Winter newsletter or head to the National Trust website and sign up today.



Member giveaway

'Bel Ami' unites a fantastic cast lead by Robert Pattinson alongside Uma Thurman, Christina Ricci and Kristin Scott Thomas in a lush period drama full of intrigue, scandal and manipulation. Based on the classic French novel 'Bel Ami' by Guy de Maupassant, which was a literary powder-keg of its time in the tradition of *Dangerous Liaisons*. The deliciously devious characters play a high-stakes game of passion and betrayal when a charismatic, unscrupulous and ambitious young man uses his new career in journalism as his ticket to the top. *Bel Ami* is an

absorbing period film, weaving a web of conquest, ambition and conspiracy.

Simply email us at media@natrust.com.au by May 31st 2012 and tell us where one of our Mother's Day events is happening and you could win!

If you have not yet discovered the world of possibility that your Trust membership brings you, here's a gentle reminder that membership gets you into our properties for free. You can also purchase gift memberships for friends and family - call us on 03 9656 9830 or visit www.natrust.com.au.

Protecting and celebrating our natural heritage



THE BACCHUS MARSH AVENUE OF HONOUR

Here are just a few of the ways that we are helping to protect our living heritage through advocacy and environmental campaigns.

Bacchus Marsh Avenue of Honour Success

The Bacchus Marsh Avenue of Honour will remain intact after construction of a roundabout was refused.

The announcement that the Avenue of Honour will remain intact was a great win for our members and supporters who campaigned with us against the roundabout.

In January this year, Victorian Planning Minister Matthew Guy refused a permit for the removal of five mature Dutch elm trees for the construction of a roundabout.

The Bacchus Marsh Avenue of Honour is one of the finest avenues of Dutch Elms left in the world.

Our role in this outcome could only have been achieved with the support of many talented individuals in a campaign that took more than two years.

We would like to thank our legal team of David Hope and James Davaris of Middletons, Anthony Southall QC, Barristers Megan Fitzgerald, and David O'Brien (now MLC for Western Victoria) who all provided invaluable advice and appearances at the numerous Heritage Council hearings.

To Dr. Greg Moore, who appeared on several occasions as our expert and Laura James, PhD candidate, who also appeared and presented her research of soldiers commemorated on the Avenue, we owe a debt of gratitude. We would also like to thank our many supporters, notably John Dwyer QC from the Australian Garden History Society and the many members of



SEPARATION TREE 2009, PRIOR TO VANDALISM

the Trust who wrote letters and emailed the government. We thank Minister Guy for his decision to protect the Avenue in perpetuity.

Finally, it was also inspirational to be working alongside Damien Strangio and the Avenue Preservation group. This team of tireless residents advocated brilliantly for the preservation of an intact Avenue.

30th Anniversary of the Register of Significant Trees

This year celebrates the 30th anniversary of our Register of Significant Trees. Today, we remain the only independent organisation that lists individual trees with the aim of improving their management, encouraging their protection, and where possible extending their life spans.

The first tree to be added to the Register was the 'Separation Tree' – a River Red Gum (*Eucalyptus camaldulensis*) in the Royal Botanic Gardens (RBG). Following vandalism of this tree in 2010, members of the Committee have been assisting the RBG with monitoring and advice.

The Significant Tree Committee, composed of volunteers who are considered experts in their fields, meet four times each year to consider nominations to the Register and make recommendations to the Trust Board.

We would like to make special mention of several members of the Committee who have been actively involved from the early days. John Hawker (1982), Andrew McCutcheon (1983) and Dr Greg Moore, who joined in 1988 and has been chair of the committee since 1996.

Trust assists Local Government with Tree Protection

We are assisting the City of Melbourne to develop their Exceptional Tree Register for trees on private land. We also appeared at the City of Frankston Planning Scheme Amendment Panel Hearing in February with expert witness Dr Greg Moore to give our strong support for the protection of trees across the municipality with Environmental Significance Overlays. Like the Trust's own Register of Significant Trees, these local government initiatives celebrate trees that contribute to our community. These Registers and Planning Scheme Amendments fit closely with our strategy of encouraging statutory protection for significant trees, as well as the recognition of their local significance.

Upcoming Events

MAY 2012 –
AUGUST 2012

Visit www.nattrust.com.au/events for new events and additional information on events listed below. Entry fees apply for Trust members for special fundraising events at Trust properties. 'Members' prices listed are for Trust members only and some events require pre-bookings.

Please note: the event details below are correct at time of printing but are subject to change. To confirm information, the Trust recommends phoning properties or visiting www.nattrust.com.au before purchasing tickets or attending the events.

National Trust Property Events

BARWON PARK

105 Inverleigh Road, Winchelsea (off the Princes Highway, Winchelsea, Melway Ref X911B8) located 30 minutes from Geelong and Colac and 90 minutes from Melbourne. Barwon Park is an easily accessible venue.

Mother's Day Concert

WHEN: Sunday 13 May 2012
TIME: 2.30pm – 4.30pm
COST: Adult \$22.50, Concession \$17.50, Child free

Light Classical music in the delightful Enclosed Courtyard; a special way to enjoy Mother's Day. View the Mansion from 1.30pm and enjoy the recital followed by refreshments.

CONTACT: 03 5244 3280

COMO HISTORIC HOUSE AND GARDEN

Corner Williams Road and Lechlade Avenue, South Yarra (Melway: 58 G2)

Spook Spotters Twilight Tours

WHEN: 7 Jun, 5 July, 2 August, 6 September and 4 October 2012
TIME: 6.30pm – 8pm
COST: Adult \$35
Concession \$30
Member \$25

Ghost tour of Como House is back by popular demand. In cooperation with Spookspotters, Ghosts tours this winter will be more exciting than ever. Not suitable for children under 18 years.

CONTACT: 03 8663 7260
BOOKINGS: www.comohouse.com.au
or 03 8663 7260

GULF STATION

1029 Melba Highway, Yarra Glen (Melway: 267 C11)

Open Day

WHEN: Sunday 20 May 2012
TIME: 10am – 4pm
COST: Adult \$5, Child \$3, Family \$15

Gulf Station will be opening its doors for you to explore the grounds and discover how things were done before the motor car came along. Experience the glamour of the purring engines of classic vehicles at Yarra Glen Racecourse and take the free shuttle service to Gulf Station to learn about the bygone era of real horse-power.

CONTACT: 03 8663 7262 or
[visit www.gulfstation.com.au](http://www.gulfstation.com.au)
BOOKINGS: not required

LA TROBE'S COTTAGE

Cnr Birdwood Avenue & Dallas Brooks Drive, Melbourne (Melway: 2L A1)

Mother's Day at La Trobe's Cottage

WHEN: Sunday 13 May 2012
TIME: 2pm – 4pm
COST: General: Adult \$5, Concession \$3, Child \$3, Family \$10.
Members (Trust, La Trobe Society, Friends of La Trobe's Cottage): Free

Tours will focus on Sophie La Trobe's role as wife and mother and will provide a fascinating glimpse into life at the family's modest yet elegant home "Jolimont" in the early days of the Port Phillip District. As the La Trobes' loved their garden, all mothers attending will receive a flower.

CONTACT: 03 9563 6363
BOOKINGS: not required

Open House at La Trobe's Cottage

WHEN: Last Sunday of the month during June to September
Every Sunday during October to May
TIME: 2pm – 4pm
COST: General: Adult \$5, Concession \$3, Child \$3, Family \$10
Members (Trust, La Trobe Society, Friends of La Trobe's Cottage): Free

Tours will focus on Charles Joseph La Trobe as the visionary administrator of the Port Phillip.

District in the early years of the settlement of Melbourne and will provide a fascinating glimpse into family life at his "Jolimont" estate, with his wife Sophie and their children.

CONTACT: 03 9563 6363
BOOKINGS: not required

LABASSA

2 Manor Grove, North Caulfield (Melway: 58 H11)

Parisian Mother's Day High Tea

WHEN: Sunday 13 May 2012
TIME: 3pm-5pm
COST: Adult \$45, Child \$45

Enjoy a glass of bubbles, delicious sandwiches, French pastries and delectable gourmet chocolates.

CONTACT: Bronwyn Worrall on 03 9509 6596 for bookings and information
BOOKINGS ESSENTIAL

Charles Dickens Memorabilia

WHEN: Sunday 15 July 2012
TIME: 10.30am – 4.30pm
COST: Adult \$8, Concession/Child \$5.50, Family \$20
Member: Free

This eclectic private collection of Charles Dickens memorabilia includes Royal Dalton wares, Wedgwood and items from other English pottery houses. Take in a tour of the internal decorative features of the house, (11am or 2pm) join the external tour (12.30pm) and enjoy morning/afternoon tea or a light lunch in the Tea Room.

CONTACT: Bronwyn Worrall on 03 9509 6596 for further information

An Afternoon With Charles Dickens

WHEN: Sunday 22 July 2012 – Labassa – 2 Manor Grove, North Caulfield
Sunday 29 July 2012 – Mandeville Hall – 10 Mandeville Crescent, Toorak
TIME: 2pm – 4.30pm
COST: General
Adult \$18 or \$32 for both shows
Concession/Child \$15 or \$25 for both shows
National Trust Members, Loreto past and current pupils and Dickens Fellowship members \$15 or \$25 for both shows

Upcoming Events (continued)

In conjunction with Mandeville Hall, Labassa presents 'An Afternoon with Charles Dickens'. To mark the occasion of his birth 200 years ago, members of the Dickens Fellowship Melbourne, will perform 4 unique dramatic presentations based on the writing of Charles Dickens in 2 Marvellous Melbourne Mansions, Labassa and Mandeville Hall.

CONTACT: Bronwyn Worrall on 03 9509 6596 or Steve Stephanopoulos on 03 9823 8157
BOOKINGS ESSENTIAL

Open Days

WHEN: Sunday 20 May and Sunday 17 June 2012
TIME: 10.30am – 4.30pm
COST: General: Adult \$8, Concession/Child \$5.50, Family \$20. Trust Members: Free

Tour of the opulent interiors and incredible architectural features of Labassa at 1pm. Self guided tours are also available. Tours of the house available at 11am and 2pm. External tour at 12.30pm.

Tea rooms operate throughout the day.

CONTACT: 03 9527 6295 or 03 9509 6596 for further information.
BOOKINGS: not required

MCCRAE HOMESTEAD

Afternoon Tea with friends of Georgiana McCrae

WHEN: Saturday 19 May 2012
TIME: 12pm – 4pm
COST: \$15

Built in 1844 by Andrew and Georgiana McCrae, McCrae Homestead is one of Victoria's older homesteads and is a physical reminder of the early pioneering life, using locally available materials and primitive construction techniques. Georgiana was an accomplished artist, musician and diarist. Her beautiful sketches are housed in the gallery beside the original homestead which contains the rare collection of 19th Century family heirlooms and artworks. Take afternoon tea with close friends of this extraordinary woman between 2.30pm and 3pm.

CONTACT: 03 5981 2866 or email bowgas@nex.net.au
BOOKINGS ESSENTIAL

MULBERRY HILL

Fire side luncheon "Stories of the Lindsay's"

WHEN: Friday 13 July 2012
TIME: 12pm – 2.30pm
COST: General \$20, Member \$18

Enjoy stories from Sir Daryl and Lady Joan's life as left by them.

CONTACT: Sharon 0407 090 794 or email bowgas@nex.net.au
BOOKINGS ESSENTIAL as numbers are limited

OLD MELBOURNE GAOL

377 Russell St, Melbourne

The Kelly Project

WHEN: Thursday 17 May 2012
TIME: 6.30pm – 8.30pm
COST: Adult \$45

Members of the Kelly Project Team from the Victorian Institute of Forensic Medicine will discuss their fascinating investigation into a skull that was stolen from the Old Melbourne Gaol in 1978, thought to belong to Ned Kelly. While this investigation established that the skull did not belong to Ned Kelly it ultimately led to the identification of his skeletal remains, found amongst the remains of other executed prisoners exhumed from the Gaol in 1929. But whose skull was stolen in 1978?

CONTACT: 03 8663 7228 or www.oldmelbournegaol.com.au for more information.
BOOKINGS ESSENTIAL

Convict Paradise

WHEN: Friday 18 May 2012
TIME: 8.30pm – 11.00pm
COST: Adult \$15
VENUE: Old Melbourne Gaol, 377 Russell St, Melbourne

Melbourne folk bands Underlander and the Taylor Project perform a one-off concert fusing together traditional bush melodies, contemporary folk and modern alternative songwriting. The performance will give a fresh young voice to Australian musical folklore and present a unique new perspective on our cultural inheritance. Supported by video projections and field recordings, and held together by spoken narratives and primary documents.

CONTACT: 03 8663 7260
BOOKINGS ESSENTIAL

Ghost Seekers

When: Once a month on Saturdays, please check the website for more details
Time: 9.30pm – 2.30am
Cost: Single \$140, Double \$220.

The Ghostseekers team conducts paranormal investigations in the Old Melbourne Gaol.

CONTACT: 03 8663 7228 or www.oldmelbournegaol.com.au for more information..
BOOKINGS ESSENTIAL

Ghosts, What Ghosts? – Night Tour

When: NEW weeknight program – Tuesdays
Time: 7.30pm – 9pm
Cost: Adult \$35, Concession \$30
NT member 20% discount
(not recommended for children under 12 yrs of age).

This Gaol is a grim place. It has a dark history. Stories abound of an unexplainable presence. Over many years, these stories have come from visitors and staff alike. None have been proved. Many are compelling.... 'GHOSTS...WHAT GHOSTS?'

CONTACT: 03 8663 7228 or www.oldmelbournegaol.com.au for more information.
BOOKINGS ESSENTIAL

'Such a Life' performance

When: Weekends and Wednesdays (School Holidays only)
Time: 9.30am – 5pm daily (Closed Christmas Day)
Cost: General: Adult \$22, Concession \$18, Child (5-15yrs) \$12. Member: Free

Witness this powerful performance that takes you inside the life and legend of Ned Kelly.

CONTACT: 03 8663 7228 or www.oldmelbournegaol.com.au for more information.
BOOKINGS: not required

Hangman's Night Tour

When: Most Monday, Wednesday, Friday and Saturday nights
Time: 7.30pm – 9pm
Cost: Adult \$35, Concession \$30
NT member 20% discount
(not recommended for children under 12 yrs of age).

What stories would a hangman tell you if he was guiding you around the Gaol, where he was the master of the rope?

What other stories from the dark side will find their way into this performance?

Book the Hangman's Night Tour and find out... if you're game?

CONTACT: 03 8663 7228 or www.oldmelbournegaol.com.au for more information.
BOOKINGS ESSENTIAL

Winter School Holiday Program

WHEN: Saturday 30 June – Sunday 15 July 2012
TIME: 10.30am – 5pm Daily
COST: General: Adult \$22, Concession \$18, Child (5-15yrs) \$12.
Member: Free

Take part in the Watch House Experience that runs every 30 minutes in the former City Watch House and there are four courtroom trials a

day in the Old Magistrates' Court. On most days there are three sessions of our popular 'Scary & Weird Stories' and even though they are designed for primary aged children, parents seem to enjoy it at least as much.

CONTACT: 03 8663 7228 or
www.oldmelbournegaol.com.au
for more information.
BOOKINGS: not required

POLLY WOODSIDE

2A Clarendon Street, South Wharf
(Melway: 2E K9)

Pirate Sundays

WHEN: First Sunday of the month
TIME: 10am – 4pm
COST: General: Adult \$15, Concession \$12,
Child \$8, Family \$42.
Member: Free

X marks the spot at Polly Woodside on the first Sunday of each month. Dress as a pirate and head to Polly Woodside to search for elusive buried treasure, walk the plank, join in pirate arts and crafts and have your face painted.

CONTACT: 03 9699 9760 or visit
www.pollywoodside.com.au for more information
BOOKINGS: not required

StoryTime

WHEN: Every Thursday
TIME: 11am – 12pm
COST: General: Adult \$15, Concession \$12,
Child \$8, Family \$42.
Member: Free

Fun and interactive storytelling with a wide variety of stories, songs and activities. Stories are read on the deck of the Polly Woodside or, in inclement weather, down below!

CONTACT: 03 9699 9760 or
www.pollywoodside.com.au

Duke & Orr's Pumphouse Guided Tour and Lecture

WHEN: Saturday 12 and 19 May 2012
WHERE: Polly Woodside Theatre
Polly Woodside Museum
WHEN: 2pm-4pm
COST: Adult \$15, Concession \$12,
Child \$8 Family \$42

Ever wondered how people worked on the underside of enormous ships? Come and see how it was done at the Polly Woodside. See amazing film footage of a typical 1960s cargo ship in the dry dock, hear a lecture explaining the process and the unique capabilities of Duke's Dock's pumps by noted maritime historian Derek Moore and take a tour around the Pumphouse.

School Holiday Program

WHEN: Monday 2 July – Friday 13 July 2012
TIME: 10.30am – 3.30pm weekdays only
COST: Adult \$15, Concession \$12,
Child \$8, Family \$42

Come aboard the Polly Woodside and join in the maritime Winter Holiday workshop fun with craft activities, stories, and games for children and families. You'll come as a land lubber and leave as an old sea salt!

CONTACT: 03 8663 7260 or visit www.pollywoodside.com.au for more information
BOOKINGS: Highly recommended

19TH CENTURY PORTABLE IRON HOUSES

399 Coventry Street, South Melbourne
(Melway: 2J K2)

Open Day

WHEN: First Sunday of each month
(except January)
TIME: 1pm - 4pm
COST: General: Adult \$5, Concession \$3,
Child \$3, Family \$10.

Member: Free

Opportunity to explore the three portable iron houses on site which are among the few pre-fabricated iron buildings remaining in the World.

CONTACT: Pauline Reid 03 9645 7517
BOOKINGS not required

Special Open Day for Heritage Festival

WHEN: Sunday 20 May 2012
TIME: 1pm - 4pm
COST: General: Adult \$5, Concession \$3,
Child \$3, Family \$10.

Member: Free

Opportunity to explore the three portable iron houses on site which are among the few pre-fabricated iron buildings remaining in the World.

CONTACT: Pauline Reid 03 9645 7517
BOOKINGS not required

Historical Guided Walk – Laneways and Byways

WHEN: Sunday 20 May 2012
TIME: 1.45pm for a 2pm start – 3.45pm
COST: General: Adult \$20, Concession \$18,
Child \$10
National Trust Member: Adult \$15,
Child \$7

A guided one and a half hour walk exploring the bluestone lanes of South Melbourne.

CONTACT: Pauline Reid 03 9645 7517
BOOKINGS: close 17 May 2012

Historical Guided Walk – Mansions and Gardens

WHEN: Sunday 17 June 2012
TIME: 1.45pm – 4pm
COST: General: Adult \$20, Concession \$18,
Child \$10, National Trust Member:
Adult \$15, Child \$7

A delightful walk around South Melbourne focusing on the Victorian architecture and on the people who lived in the Mansions around St Vincent Gardens and the surrounding area.

CONTACT: Pauline Reid 03 9645 7517 or
9699 2172 or email pih@natstrust.com.au
BOOKINGS: close 14 June 2012

Historical Guided Walk – Window Shopping on Emerald Hill

WHEN: Sunday 15 July 2012
TIME: 1.45pm – 4pm
COST: General: Adult \$20, Concession \$18,
Child \$10, National Trust Member:
Adult \$15, Child \$7

This 1.5 hr guided walk explores Emerald Hill, which was the original name for South Melbourne. The area flourished as a result of the influx of migrants in the 1850's and became a vibrant commercial hub.

CONTACT: Pauline Reid 03 9645 7517 or 9699
2172 or email pih@natstrust.com.au
BOOKINGS: close 12 July 2012

RIPPON LEA HOUSE AND GARDENS

192 Hotham Street, Elsternwick (Melway: 67 F2)

Mother's Day

WHEN: Sunday 13 May 2012
TIME: 11am – 4pm
COST: Adult \$12, Concession \$9, Child \$6.50,
Family \$30

Rippon Lea hosts a special Mother's Day Out on Sunday 13 May. Enjoy a Devonshire Tea in the Ballroom, as well as live music, boat rides on the lake, old fashioned games and more.

CONTACT: 03 8663 7260
BOOKINGS: Highly recommended

Glen Eira StoryTelling Festival – Brian Nankervis

WHEN: Saturday 23 June 2012
TIME: 11am – 12.30pm
COST: Adult \$15, Concession \$10

Brian Nankervis is probably best-known in recent times for his role as one of the hosts of SBS Television's ROCKWIZ. Here, Brian tells the story of a most interesting life from primary school teaching, his role as Dr Ray Good in the theatrical and TV versions of Let the Blood Run Free and his famous eccentric beat poet character Raymond J Bartholomeuz. Includes brunch.

CONTACT: 03 8663 7260
BOOKINGS ESSENTIAL and close Friday
22 June 2012

Upcoming Events (continued)

Glen Eira Story Telling Festival – Salon: Alan Kogosowski & Sonia LeTorneau

WHEN: Sunday 24 June 2012
TIME: 11am – 2pm
COST: Adult \$30

A rare opportunity to listen to the stories of two of Glen Eira's (and the world's) most fascinating musical artists. Alan Kogosowski, world renowned concert pianist, and violinist Sonia LeTorneau (Boston Pops Orchestra USA, WA Symphony Orchestra, Glen Eira String Orchestra) will reminisce about life as classical musicians on the world stage. Includes morning tea.

CONTACT: 03 8663 7260
BOOKINGS ESSENTIAL close Friday
22 June 2012

Branch Events

ACTIVITIES COMMITTEE NATIONAL TRUST OF AUSTRALIA (VIC)

ABC Southbank Centre Building Tours

WHEN: Thursday 14 June 2012
Time: 1st tour 10am-11am,
2nd tour 11am-12pm
COST: Adult \$15

National Trust Member \$10

VENUE: ABC Studios Southbank, cnr
Southbank Boulevard and Sturt Street,
Southbank

A one hour guided tour of the ABC Centre provides a unique opportunity to see how it all goes to air.

CONTACT: Send booking details, cheque – payable to National Trust of Australia (Vic) – or credit card details, stamped self addressed envelope to Lesley Barnes, 21 Winnetka Drive, Lilydale, 3140. Phone 9735 5772.
BOOKINGS essential by Thursday 7 June 2012

The Costume Collection

WHEN: Tuesday 26 June 2012
TIME: 10.45am – 12.30pm
COST: Adult \$15, Child \$5
National Trust Member Adult \$10,
Child \$5

VENUE: Yarra Park (Bulleen)

Meet at the Collection for a brief talk by the owner, Loel Thomson at 11.00am. The tour of this fascinating collection, showing the history of Australian costume from 1788, takes about an hour and a half. There are stairs but they are easy ones. Car parking is available at the sides and back of the building.

CONTACT: Send booking details, cheque – payable to National Trust of Australia (Vic) – or credit card details with stamped self addressed envelope to: Margaret Walker 1/8 Winmalee Rd Balwyn 3103. Phone 9836 2783.
BOOKINGS ESSENTIAL: by Thursday 21 June 2012

A visit to Tarrawarra Abbey and Tarrawarra Museum of Modern Art

WHEN: Wednesday 18 July 2012
TIME: 10.30am – 4pm
COST: Adult \$25, Concession \$20
National Trust Member Adult \$20,
Concession \$15
(Please provide concession number upon booking)

Drive to Tarrawarra Abbey to meet the Abbot and his Cistercian community for a tour of the estate. Lunch at own expense at the Grand Hotel Yarra Glen then onto the Tarrawarra Museum of Modern Art for a conducted tour of this remarkable building which houses the prestigious Besen collection of modern art. Maps supplied with application.

CONTACT: Send booking details, cheque – payable to National Trust of Australia (Vic) – or credit card details, stamped self addressed envelope to Lesley Barnes, 21 Winnetka Drive Lilydale 3140. Phone 9735 5772.
BOOKINGS ESSENTIAL: by Tuesday 10 July 2012

CASEY CARDINIA BRANCH

Casey Cardinia Branch Meeting – Guest Speaker Fred Elliot

WHEN: Monday 20 August 2012
TIME: 7.30pm for an 8pm start
COST: Gold Coin Donation or Bring a Plate
VENUE: Function Room, Berwick Heritage
Centre & Trust Shop
Pioneers Park, Peel Street,
Berwick 3806

Members & Friends are cordially invited to attend our friendly interesting quarterly Casey Cardinia Branch Meeting with Guest Speaker Fred Elliott. Fred's anecdotes about people, places and his own experiences will guarantee a fascinating and enjoyable evening.

CONTACT: 9707 1518 or 9769 5653 for more information
BOOKINGS ESSENTIAL

Tenth Anniversary Gala Dinner

WHEN: Wednesday 27 June 2012
COST: Adult \$60
VENUE: Clover Cottage, Manuka Road
Berwick 3806

Celebrate the 10th Anniversary of the Casey Cardinia Branch at a Gala Dinner. Enjoy a delicious 3 course dinner served in the delightful heritage restaurant "Clover Cottage" with its beautiful old garden.

CONTACT: The Secretary on 9707 1518
for more information
BOOKINGS: close 11 June 2012

GEE LONG & REGION BRANCH

Connewarre Heritage and talk in Connewarre

WHEN: Tuesday 29 May 2012
TIME: 7pm – 10pm
COST: Gold coin
VENUE: Connewarre Hall, Randles Road
Connewarre (turn off Bluestone
School Road)

Local Connewarre historian Colin Hutchinson uncovers the fascinating heritage of the Connewarre district, first settled as early as 1837. Seventeen significant heritage places in the area have been identified. Preceded by a Branch meeting and followed by supper.

CONTACT: RVSP and enquiries Faye and Ken
MacLean 5254 2876

Connewarre Heritage and Tour of the Geelong Heritage Centre

WHEN: Tuesday 26 June 2012
TIME: 9.30am – 12.30pm
COST: Gold coin
VENUE: Geelong Heritage Centre 51 Little
Malop Street Geelong

The Geelong Heritage Centre is Victoria's largest regional archive with 1.8km of public and private records, comprising paper documents, books, photographs, film, and other artefacts. Records produced by local government, businesses, clubs, societies, churches and individuals are accessible. There are many drawings of early buildings. Tour and meeting in Bill Morrow theatre.

CONTACT: RSVP and enquires David and
Pauline Walker 5289 1569

Connewarre Heritage and tour of Buninyong

WHEN: Tuesday 31 July
TIME: 11am to 3pm
COST: Gold coin
VENUE: Buninyong and District Historical
Society, Old Court House, under
the clock tower, Learmonth Street
Buninyong

Buninyong was a major inland community of pre-goldrush Victoria, and the base from which the rich deposits of the Ballarat goldfields were discovered. Many significant early buildings and records have been preserved or restored. There's a meeting and self-drive tour. BYO lunch.

CONTACT: RSVP and enquiries Lyn Pierotti 03 5281 5043

MORNINGTON PENINSULA BRANCH

Coastal Wetlands Walk

WHEN: Wednesday 16 May 2012

TIME: 10am-11.45am

COST: Free

VENUE: Salmon Street Hastings –
Entrance to boardwalk

This guided walk highlights the southern most mangroves in the world, with good views to French Island and Sandstone Island. Take the wetlands boardwalk to historic Jacks Tanning Pit where in the early 1900s the Jack brothers used to soak their nets, twine, rope and cord fishing lines to preserve them.

CONTACT: 03 5988 9853 or email jwa45664@bigpond.net.au
BOOKINGS not required

Dive Victoria South Channel Fort Tour

WHEN: Monday 14 May 2012

TIME: 9.30am-12.30pm

COST: \$45

WHERE: Sorrento Pier, Sorrento

Join Dive Victoria for a tour of the southern waters of Port Phillip, viewing sites of historical interest and going ashore for a tour of the South Channel Fort. Construction of the Fort on a .7 hectare man-made island was commenced in 1879 with the intention of defending Melbourne in the event of being raided by warships.

CONTACT: 03 9580 9617 or
email jwa45664@bigpond.net.au
BOOKINGS ESSENTIAL

Endeavour Fern Gully Guided Tours

WHEN: Saturday 12 May 2012

TIME: 10am - 1pm

COST: Free

Endeavour Fern Gully is a significant remnant of temperate rainforest with great biodiversity and many rare indigenous species. Gain an insight into this amazing site by taking a guided tour of the Gully with members of the Peninsula Bird Observers Club, followed by guides from EFG with expert knowledge on the ecology, environment and sustainability of the Gully.

CONTACT: jwa45664@bigpond.net.au or
03 5988 9853
BOOKINGS not required

'OWZAT! Cricket with Ken Piesse

WHEN: Wednesday 18 July 2012

TIME: 12pm – 2pm

COST: Adult \$25, Concession \$20
National Trust Member Adult \$20,
Concession \$20

VENUE: Edwardian Room, The Briars,
Nepean Highway, Mt Martha

Enjoy a fireside basket luncheon with glass of wine and presentation talk by Ken Piesse about his experiences over the years with some of Australia's great cricket personalities i.e., Max Walker, Terry Jenner and Brad Hodge. Ken Piesse is one of Australia's foremost authors on the subject of cricket and editor of Cricketer magazine for more than 20 years.

CONTACT: Elizabeth on 03 9580 9617
or jwa45664@bigpond.net.au for more
information
BOOKINGS ESSENTIAL

MOUNT ALEXANDER BRANCH

Fryerstown Guided Drive and Walk

WHEN: Sunday 5 August 2012

TIME: 2.00pm to 4.30pm

COST: Full \$15 Member \$10

Located in the hills between Chewton and Vaughan Springs, Fryerstown is a pretty village, with some impressive early buildings and miners cottages in streets lined with large old European trees and surrounded by abandoned diggings. Enjoy a guided walk and drive around some of Fryerstown's important heritage features followed by afternoon tea.

CONTACT: Brian Tresidder on 03 54721108
(after 7 June 2012)
BOOKINGS ESSENTIAL

NORTH EAST VICTORIA BRANCH

Federal Standard Printing Works Open Day

WHEN: Saturday 12 – Sunday 13 May 2012

TIME: 11am-3pm

COST: \$5

VENUE: Federal Standard Printing Works,
Main Street, Chiltern

Established in 1859, this is one of the few substantially intact provincial newspaper printeries remaining from the gold mining era. It features a fully operational Hot Metal Letterpress and displays a printing office still in its original state. Have the place it holds in our history explained through a rare opportunity to see 100 year old machinery being operated.

CONTACT: robertandmarym@bigpond.com

Lake View House Mother's Day Afternoon Tea

WHEN: Sunday 13 May 2012

TIME: 2pm-5pm

COST: \$5

VENUE: Lake View House,
18-22 Victoria Street, Chiltern

Lake View is significant for its association with the distinguished Australian author Henry Handel Richardson (pseudonym for Ethel Richardson). Her early years in Chiltern featured in the classic novel, 'The Fortunes of Richard Mahony'. The charming red brick house is furnished in period style and contains a collection of Richardson memorabilia. Celebrate Mother's Day in the beautiful cottage garden with a home made afternoon tea.

CONTACT: 03 5726 1590

NORTH EAST WOMEN'S AUXILIARY

AGM and Luncheon

WHEN: Monday 14th May 2012

TIME: 10am to early afternoon

COST: \$30.00

AGM and luncheon followed by guided tour to Wartime Camps Museum and German War Cemetery.

Hill Top Golf and Country Club 71 Gowrie St,
Tatura

CONTACT: Charney Hunt 5744 1671

National Trust Events

WALKING TOURS

National Trust Heritage Walking Tours

WHERE: Meet at Tasma Terrace, 4 Parliament
Place, East Melbourne

WHEN: Every Tuesday, Thursday and Saturday

TIME: 10am Tuesday and Saturday
2pm Thursday

COST: General \$35, Member: \$30

Would you like to know the stories, people and places that helped shape Melbourne? Join us on the National Trust Heritage Walking Tour where we show you some of Melbourne's majestic buildings. With a qualified tour guide and small groups, the best way to see Heritage Melbourne is up close and on foot.

CONTACT: 03 8663 7260 or
bookings@nattrust.com.au
BOOKINGS essential by 48 hours before
departure date and available online at
www.nattrust.com.au/walks_and_tours



Upcoming Events (continued)

Happy 150th Birthday Old Treasury Series – Looking at the architectural legacy of JJ Clark

WHERE: Meet: In front of the Old Royal Mint, corner William and Latrobe Streets
Finish: Old Treasury Building, Spring Street, Melbourne.

WHEN: Sunday 13 May 2012

TIME: 10am – 12pm

COST: General: \$30

Member: \$25

Join Kenneth W Park on this lengthy but delightful walk which will take you past some significant architectural contributions of JJ Clark and those of his contemporaries in the CBD. Includes coffee.

CONTACT: 03 8663 7260

BOOKINGS essential

HERITAGE TRAVEL TALKS

Happy Birthday 150th Old Treasury Series – Meet Mr Clark, Architect Extraordinaire

WHEN: Monday 14 May 2012

TIME: 10am – 11am

COST: General: \$25

Member: \$22

VENUE: J J Clark Room, Old Treasury Building, 20 Spring Street (intersection of Collins and Spring Streets) Melbourne.

Kenneth W Park delivers a richly illustrated lecture examining the life and work of John James Clark and his legacy of fine buildings to be found across Melbourne, Victoria and Australasia is quite extraordinary and noteworthy for fine buildings the likes of the Royal Mint, Old Treasury, City Baths, the Brisbane Treasury Buildings, Auckland Town Hall and many more. Light refreshments included.

CONTACT 03 8663 7260

BOOKINGS essential

Splendid Sights and Sounds

WHEN: Saturday 19 May 2012

TIME: 1pm – 4.30pm


COST: Adult \$35

VENUE: Anticipated to start at St. Luke's Anglican Church, South Melbourne

A walking tour of historic churches in South Melbourne lead by leading authority of pipe organs John Maidment and art historian Dr. Bronwyn Hughes. Participants will have an opportunity to see the buildings and stained glass and to hear the sounds of the organs played by one of Melbourne's leading organists.

CONTACT: 03 8663 7260


BOOKINGS essential



Escape with V/Line.

On V/Line you can sit back, relax and enjoy the journey. You can also get great discounts at many attractions in Melbourne and throughout country Victoria. For great getaway ideas, go to our website and press escape.

Call 1800 800 007 vline.com.au



Treat yourself at the gift shop!



The National Trust gift store has a unique collection of Australian designed and made items. From homewares to beauty products plus souvenirs that promote the heritage of Australia. We are now proud to stock the popular Barnes' Castlemaine Rock. Founded in Castlemaine in 1853 by Thomas Shrinkfield Barnes it was originally sold around the gold diggings in paper cups. These delicious hard boiled lollies in their classic tins make the perfect gift or simply a treat just for you.

All visitors welcome. Please stop by at 6 Parliament Place, East Melbourne or call us on (03) 9656 9814. Opening hours are 9.00am – 5.00pm from Monday to Friday.

The Australian Titanic Connection



Arthur McCrae was the grandson of Georgiana McCrae, of McCrae Homestead, and tragically died in the sinking of the *Titanic*. This is Arthur's story.

With the 100 year anniversary of the loss of the *Titanic* in April this year, we pay tribute to 32 year old Arthur McCrae who was the only Australian passenger on the British luxury steamship.

Born on the January 7 1880 in Adelaide, Arthur Gordon McCrae was the second youngest son of Farquhar Peregrine Gordon McCrae and Emily Aphasia Brown.

Arthur was educated at Sydney Grammar and went on to study engineering at St Paul's Collage at Sydney University. Once Arthur graduated he traveled overseas, accepting a position at a gold mine in South Africa. He then moved to Tsarist Russia in the post of assistant-manager of the Spasky copper-mine, Akmolinsk, Siberia.

Frequently writing to his family, Arthur often shared his tales and adventures, sending souvenirs and photos of faraway places.

Arthur became engaged to the daughter of the mine manager while in Spasky. In 1912, Arthur made his way to England on his way to meet up with friends in Canada.

At Southampton he purchased a second class ticket and was thrilled to board the *Titanic* on its maiden voyage on the 10th April, 1912.

Four days later, the *Titanic* collided with an iceberg. In catastrophic circumstances, Arthur died in the sinking and his body was recovered and buried at the Fairview Cemetery, Halifax, Nova Scotia.

The record on Body No.209 reads.

NO.209-Male-Estimated Age, 45. Fair-Hair, Clothing-Blue suit; white canvas shoes; flannel shirt.

Effects-Diamond and Emerald ring; gold links; two watches; key chain; keys; pencil case; foreign bills; letter case.

Name-Gordon McCrae.

FOOTNOTE:

Arthur's grandmother was Georgiana Huntly Gordon McCrae (1804-1890).

Georgiana was the illegitimate daughter of George, 5th Duke of Gordon and Jane Graham. Georgiana migrated to Australia in 1841 to join her husband Andrew (1800-1874). She bought her four young boys with her, the youngest of whom was Arthur's father, Farquhar. Georgiana lived at McCrae Homestead, which is one of the Trust's four properties on the Mornington Peninsula.

A salute to Superintendent Charles La Trobe



LEFT TO RIGHT: NATIONAL TRUST CEO MARTIN PURSLOW, PROFESSOR ADRIENNE CLARK AC, CHANCELLOR OF LA TROBE UNIVERSITY, PRESIDENT OF THE LA TROBE SOCIETY DIANE GARDINER, PROFESSOR ROBIN WILLIAMS AND PROFESSOR RICHARD BROOME.

Celebrations for Lieutenant-Governor Charles Joseph La Trobe's 211th birthday were held recently at La Trobe's Cottage.

Birthday celebrations were officiated by Martin Purslow, CEO of the National Trust, and Professor Adrienne Clark AC, Chancellor of La Trobe University. The event was attended by a large gathering of guests including the Friends of La Trobe Cottage and event organisers, the La Trobe society.

The event marked new linkages between La Trobe University and the La Trobe Society which the National Trust, as owner and manager of La Trobe's Cottage, fully supports.

Thanks to a Commonwealth Government grant, the Cottage has undergone a recent transformation, with a new cedar shingle roof, fence and a beautiful garden, featuring plants from La Trobe's time.



Classifieds

If you would like to receive our e-newsletter sign up today by sending an email to media@natrtrust.com.au with your details.

ROOFING

SLATES, TILES, SPOUTINGS
& DOWNPIPES BY

Steeple Jack Jones

EDWARDIAN, FEDERATION
AND VICTORIAN ROOF AND
CHIMNEY RESTORATIONS

LICENSED ROOF PLUMBER 40647

0417 556 403
9543 6713

www.steeplejackjones.com

CHINA ROSE ANTIQUES

See our large range of
Australian and imported antiques at
www.chinaroseantiques.com.au

DAMP WALLS

- * Rising damp permanently cured by damp-course installation
- * University developed and tested
- * Over 10000 successful installations Australia-wide since 1981
- * 25 Year written guarantee
- * For free inspection, quote and advice

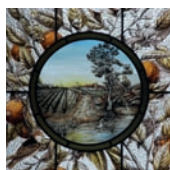
Phone: 9699 8233

Tech-Dry

Pty. Ltd.

Showroom: 177-179 Coventry Street,
South Melbourne

STAINED GLASS



Glass painting and leadlight.
New commissions, restoration
and reproduction work.

BRUCE HUTTON
Almond Glassworks
Phone (03) 9568 5307
www.almond-glass.com

DELTA CARPET ONE

Ph 52 21 4222

Floor and carpet supplies in Geelong.
With thanks for their work at Barwon Park Mansion
www.carpetone.com.au

RICHARD CARTER

Slate craftsman, all roof plumbing inclusive of
restoration, repairs and renewals. Period bullnose
verandah design and construction. Reg. No. 25058.

Telephone: 0418 566 406 / 9482 4680

KOSNAR'S PICTURE FRAMING AND MIRRORS

Restoration of artworks, photographs
picture frames & mirrors, including regilding.
Period Frames, Mirrors, Prints & Etchings.

488 Mt Alexander Road, Ascot Vale.
Telephone: 9370 5744
www.kosnar.com.au

AUTHENTIC AGE

Advice on restoration, alteration and furnishing
period houses and heritage buildings.

Telephone: (03) 9818 4324 or
www.authenticage.com.au

TUCKPOINTING, BRICKWORK, STONEWORK RESTORATION & REBUILDING

City & Guilds of London Institute trained craftsman.
Over 40 years experience.

PAUL BURTON
0408 343 502 or (03) 9789 7890

melbourne • sydney • brisbane • canberra

Job: Goods Shed No. 2

Heritage Slate: Trinity Heather

Specification: Slate to match
original size and colour

Architect: Lovell Chen

Builder: Equiset



Tel 1300 884 334

info@roofingslateworx.com.au
www.roofingslateworx.com.au

elegance • distinction • harmony



SILVER & METALWARE REPAIRS & REPLATING

- Have that small repair done or have your heirlooms fully restored by a silversmith with over 30 years experience in the antique restoration industry
- Services extend to all metals including brass, copper, spelter; also lacquering and antique finished.

Contact us now for a free appraisal and quotation
DUANE LUCAS (03) 9460 1123
11 Kurnai Avenue, Reservoir 3073

Email: info@heritagesilverware.com.au



RESTORATION

STEEPLE JACK JONES

- * SLATE CRAFTSMAN
- * TERRACOTTA SPECIALIST
- * ROOF PLUMBER no 40647

Restorer of Mooramong; Steam Packet Inn; Como;
Rippon Lea; Mulberry Hill; many churches.

Telephone (03) 9543 6713

Advertisements listed in the *Victorian News* are paid advertisements.

Should you wish to advertise with the Trust, please contact media@natrtrust.com.au or call 03 9656 9800