

VICTORIAN NEWS



NATIONAL TRUST

'Our heritage... yesterday,
today and tomorrow'

February 2012

Frank about fashion



P5 | TEDDY BEARS' PICNIC

P8 & P9 | ADVOCACY UPDATE

P10 | HERITAGE FESTIVAL



Events in Brief: February to May 2012

National Trust of Australia (Vic)

Tasma Terrace, 4 Parliament Place, East Melbourne, Victoria 3002

Telephone: 03 9656 9800 Facsimile: 03 9650 5397 Email: info@nattrust.com.au

www.nattrust.com.au

Message from the Chairman

I spoke at our AGM at Barwon Park about our commitment to a National Trust Reconciliation Action Plan. Since then the Trust has been actively engaged with the community in the development of our plan and an update is included in the February issue of *Trust News*.

Trust staff have also been busy planning for the upcoming Heritage Festival which is once again supported by the Commonwealth Government. This issue of *Victorian News* includes an introduction on the theme *Innovation and Invention*. At the time of going to press over 150 events have been registered in Victoria (there were around 90 events last year). Members will notice that the program design for this year's event also incorporates print work from our National Trust Federal Printing Works in Chiltern.

Our summer events started well with a record 7 500 people visiting Como for our second Paris to Provence festival over the last weekend in November.

Advocacy is a primary focus of our activity and updates in this issue include a review of the City of Melbourne heritage controls which the Trust has been actively engaged



DR. GRAEME L. BLACKMAN AT PARISTO PROVENCE

in, and our long running campaign to save the Bacchus Marsh Avenue of Honour. Trust staff have also been active in many other areas detailed in this issue, including the important and emotive review of heritage precincts in Boroondara.

Our support for good outcomes is demonstrated by our expanding Heritage Awards program. This year we are partnering

eight local governments to celebrate excellence in heritage work.

Dr Graeme L. Blackman OAM

Chairman
The National Trust of Australia (Vic)

Message from the CEO

2012 sees the reopening of Gulf Station after close to \$1m investment including support from the Heritage Council, Heritage Victoria and the Commonwealth. The improved site which includes a new visitor centre shop and restored and reinterpreted homestead was reopened this summer and will open again at Easter. Endeavor Fern Gully at Red Hill has also opened over the summer with proceeds from the Red Hill Fair car park at the site generating several thousand dollars to support volunteers working on revegetation and maintenance of the site. We have also now completed the re-roofing of the Ballroom at Rippon Lea and I hope members have enjoyed the many major improvements at the site and at other properties over summer.

The Trust has for some time been developing partnerships to deliver larger cultural heritage events. Outdoor theatre included a second year of Alice in Wonderland and performance at Polly Woodside which also



MARTIN PURSLOW WITH JUDY WALSH AND GILLIAN TOLLEY AT ENDEAVOUR FERN GULLY

proved very popular. Our largest event for many years is the upcoming state wide Heritage Festival in April. I would like to thank Branch members for their support for an event which would not be possible without them.

This issue of Victorian News also includes updates on our iPhone apps. The Heritage Festival app provides a full heritage tourism

program whilst 'Lost' 100 Lost Buildings of Melbourne links with our touring exhibition 'Loved and Lost – the Battle for Melbourne'. 'Lost' has received considerable sponsorship support from the City of Melbourne and State Government. The exhibition will be on display in the atrium at Federation Square in March. An autumn update of *Trust Trees* is also due for launch at the Melbourne International Flower and Garden Show.

This issue includes a special offer negotiated for members from our sponsor AGL who generously support the Skipping Girl's restoration and ongoing maintenance. Look out for an increasing range of additional member benefits negotiated by our new membership team.

Martin Purslow

CEO
The National Trust of Australia (Vic)

The socialite and her fashion

Well known Melbourne personality Lillian Frank is known for her sartorial style.

Having already generously donated her famous hat collection to The Australian Racing Museum, Lillian Frank has now given her wedding dress and evening-wear to the National Trust; a welcome addition to the Trust's growing collection of 20th century fashion.

Married in 1956, at the Dorchester Melbourne, Lillian wore a cream satin strapless gown with matching coat, embroidered with seed beads, sequins and shells; the dress is a glamorous example of 1950s figure hugging silhouette. Lillian commissioned the gown after seeing an evening dress on the runway at fashion house *La Petite*, whilst she was hairdressing for the parade. Astutely, she sought out one of the salon's seamstresses and asked her to recreate the gown in cream, under the label *Comtesse*.

The donation to the Trust of Lillian's *Balencia* evening wear – two gowns dated from the 1980s and a 1920s evening coat – exemplify the high impact and exuberant style characteristic of Lillian Frank. Victoria Cascajo named her label *Balencia* after the house of Balenciaga where she trained in Spain. She has been made legendary by dressing the Prime Minister's wife Sonia McMahon in 'that dress' she wore to The White House in 1971. Lillian Frank continues to be one of Victoria's clients as well as a close friend.



LILLIAN FRANK WITH THE WEDDING DRESS. SHE WORE WHEN SHE WAS MARRIED IN 1956. © NEWSPIX / TIM CARRAFA.



TRUST TREASURES



JOHN MAXWELL

Polly Woodside has a number of volunteers who have, and who continue to, dedicate timeless hours to help restore and preserve the Ship.

Without their enthusiasm, knowledge and dedication the ship would not be what it is today. One such volunteer is John Maxwell. John has been volunteering on 'Polly' for the last six years. He first signed up after having

visited *Polly Woodside* at the Melbourne Maritime Museum with his grandchildren; he started chatting to a volunteer on site who convinced him to join the crew. Originally from Scotland, John already had an interest in ships and although he had once been a sea cadet he had never actually worked on a ship. John continues to volunteer at 'Polly' every Tuesday and Thursday and also turns up religiously to help out on Pirate Days which fall on the first Sunday of each month. He is a generous, happy man and a much loved member of the Polly family. Thank you John for all your hard work, commitment and positive outlook on life!



Trust Kids!

Are you interested in stories? In history? In having fun? If you are also under 12 then you are a 'Trust Kid!' and we need your help!

We want to develop a range of activities and events that you take part in throughout the year. As our first members we would like your input into how we develop the programs.

What would you like to do? Where would you like to visit? What competitions would you like? Go to your webpage at www.natrust.com.au/trustkids to register your interest and then start drawing, thinking, photographing and writing! The kids with the five best ideas will form the *Trust Kids!* Committee, directly talking to us about your ideas. The first *Trust Kids!* Committee meeting will be with our CEO Martin Purslow, aboard our Tall Ship *Polly Woodside*, on the Yarra River in Melbourne during the Easter holidays. So get thinking and register now



BECOME A TRUST KID!

Start rhyming!

We want *Trust Kids!* to start rhyming! Meet a snake who looks like a rake and a parrot who looks like a carrot! Win a copy of *Parrot Carrot*, a book of fantastic rhyming creatures from one of our very own Glenfern writers, Kate Temple. All you need to do is make up your own rhyming mash-up animal and tell us about it online at www.natrust.com.au/trustkids



ANNUAL TEDDY BEAR'S PICNIC

Rippon Lea House
& Gardens

192 Hotham St, Elsternwick

Sunday 26 February 2012

10am - 4pm

Limited tickets will be available at the gate or book online at www.ripponleaeestate.com.au



Round and round the garden like a TEDDY BEAR...



Top rating children characters and special guests, *Angelina Ballerina* and *Scooby Doo*, are preparing to entertain the masses as they join over 3000 kids at the annual Teddy Bears' Picnic at Rippon Lea House and Gardens on Sunday 26 February 2012.

Entertainment on the day includes storytelling, pony rides, an animal farm, stilt walkers, roving fairy face painting, boat rides on the lake, dancing workshops, mini golf, jumping castle, and stage shows.

There will also be the ever popular Teddy Bear Parade at 12:45 pm on the main stage when kids will get the chance to show off their most favourite furry friend.

Bring the whole family, pack a picnic or indulge in the culinary delights from the many food stalls on offer. Listen to live music and be entertained by a variety of comedians and music acts as you explore over 11 hectares of magnificently restored gardens. Visit www.ripponleaestate.com.au

Caroline's Camellia

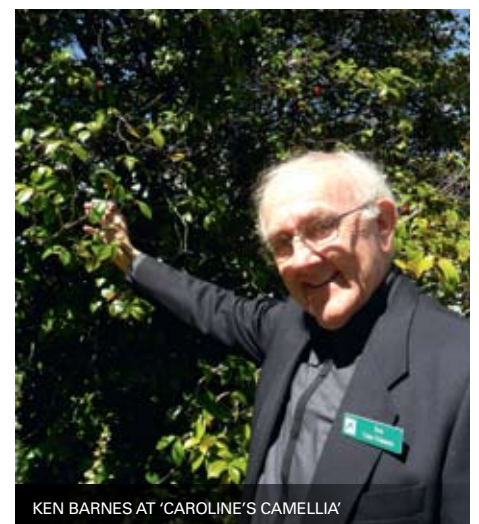
After 14 years guiding at Como, most of the time as a part of the education program, I thought I had experienced most of the highs (and the occasional lows) that go with being a National Trust volunteer. Then along came an experience that topped them all.

At Como we often host large groups of school children as a part of the Education Departments social history studies. Some of the guides introduce the 7, 8 or 9 year olds to the Como story by inviting them to pretend to be members of Armytage family or their servants. With a little help from the guides and teachers, the children choose the roles between themselves depending on their personality. It is great fun and helps

them to identify with the members of the Armytage household.

Recently a school from an outer Melbourne suburb arrived. The eight year old girl, chosen to be Mrs Caroline Armytage, revealed during a discussion about surnames that her family was from Cambodia. She was particularly bright and eager to learn what it was to be 'The Mum' from such a large Australian pioneering family living in a fine house.

This small girl, like many other, continued to wear the sticker 'Caroline' on her school tunic for the rest of the day. As the group departed to catch their bus home I noticed that she had picked up four fallen blooms from the ground beneath a large and venerable camellia that stands outside the Como kitchen. She had carefully saved the paper from her lunch box and wrapped the flowers in it to ensure they were not damaged on the homeward journey.



The poignancy of the little girl's action was not lost on the other guides, for the tree from which the flowers had been selected is well known as 'Caroline's Camellia'. It has stood in the Como garden for well over 100 years. It was as if Caroline Armytage had arranged the whole sweetly nostalgic experience.

Ken Barnes



Help! 5000 eggs have gone missing!



Join in the famous Easter egg hunt

Rippon Lea's annual Easter Fun Day will be in its fifth year in 2012.

Held on Easter Sunday, 8 April, the day offers a range of children's art and craft activities, sporting games as well as boat rides, house tours, face painting and, of course, the Easter egg hunt!!

The hunt is central to the day's activities and this year will be bigger and better than ever with Heritage Fine Chocolates back as a much valued sponsor for the event. Heritage Fine Chocolates will be generously donating 5000 Easter eggs for children of all ages to seek out in the day's egg hunts.

Heritage Fine Chocolates is an Australian owned company that began in 1985 and has been operating for more than 25 years. The business is proud of its success through delivering consistent high quality products and creative packaging, which has driven significant growth in these boxed chocolates, Easter and Christmas lines as well as corporate products. The Trust is proud to be associated with Heritage Fine Chocolates for this major family Easter event.



RIPPON LEA'S APPLE SALE- DON'T MISS OUT!

Attention all green thumbs...

After a hugely successful sale last year the National Trust Gardens Unit is delighted to announce it will again be selling a selection of heirloom apple trees from the Rippon Lea orchard.

Of the 120 plus varieties in our collection a selection of over 40 of the best have been propagated by our staff on site. These varieties include the often requested 'Cox's Orange Pippin' and 'Bramley's Seedling', the stunning snow apple 'Pomme de Neige', and many other delicious varieties that cannot be found in the shops and supermarkets.

Heritage apple varieties offer a whole new world of flavour compared to the modern commercial varieties and are just as easy to grow! This year we have also included a selection of true cider varieties, something of which Australia has a real shortage.

WHEN: Sunday 18 March 2012

TIME: 10am - 4pm

COST: Free entry into the garden with a purchase of an apple tree.

CONTACT: Rippon Lea on 03 9856 6095 or visit www.ripponleaestate.com.au

Bookings are not required

Vintage Clothing Sale moves to Como!



The retro clothing sale held one autumn weekend in March has proved so wildly successful that it has outgrown the garage where it all started and will now be held at Como House and Garden. Organised entirely by volunteers, it features stunning, late 20th century designer outfits and accessories that have all been donated. The proceeds of the sale will be put towards the conservation and display of garments in the Trust's extensive Costume Collection. See the website for more details www.comohouse.com.au or phone Como House and Garden for more information on 03 9827 2500

WHEN: 17 and 18 March 2012

TIME: 10am to 4pm each day

COST: entry is a gold coin donation, clothing prices will be displayed

BOOKINGS: Not required for general entry, but will be necessary for special preview entry. Please visit www.comohouse.com.au



MARK WALLIS, MANAGING AND ARTISTIC DIRECTOR OF PAST PLEASURES

Founded in 1987, Past Pleasures Ltd is the oldest, biggest and most experienced live interpretation and historical events company in Britain. Mark Wallis, Managing and Artistic Director, visited the National Trust of Australia (Vic) in October 2011.

What started your interest in period costume?

"Like many boys I was first into Military Uniforms that soon lead to an interest in men's clothing generally, of the past. When I compare to what people wore when I was growing up in the 1960s, some of it was fairly flamboyant. It didn't have the resonance of historical clothing. I suppose it was aesthetics, I didn't know the word for it then, but that is what I would call it now. An interest in the shape, the colour the texture the styles the layers of clothing, and the way it made people behave in those clothes."

Past Pleasures pays the Trust a visit



MARK WALLIS IN COSTUME

As a young boy, you had an interest in costumes.

"Yes, my granny made my first ever uniform, because she was a dress maker. When I found I could paint model soldiers that was great. And I could also draw and paint anyway, then I could paint the uniforms, I could collect the uniforms with my pocket money, then I found out I could dress up and wear them. I didn't have anyone to do that with, so when people used to walk past my parents house I would knock on the window in my uniform and people would look up and I would dive behind the curtain as a way of expressing myself. Then I found people I could do that with in various re-enactment military societies and that is what sort of kept it going."

What do you classify as a costume, what makes a costume?

"Dr Johnson in his famous dictionary says that a costume is clothing that is not worn every day, and that differentiates it. Now we in Past Pleasures, and many other companies and sites around the world I have noticed correctly place great value on

the authenticity of the clothing and they would call it period clothing. I would still call it costume because it isn't what you wear in your office everyday. There is a slight difference, it's not theatre costume, nor is it fancy dress. It should be a lot more accurate than that, because I believe that period clothing or costume, if you will, are good learning tools. They are springboards for information."

What is your favourite heritage site in Australia?

"My favourite site in Australia really has to be Tasma Terrace, the head quarters of the National Trust. It is amazing, I saw it from the street, and I thought my god this is like something they left over from the Edward Gorey play, or a gothic horror novel.

The only other thing inside it is not just the shop, but to the National Trust offices, I find it to be an incredible, beautiful building. Very atmospheric, very redolent of the past, and I felt like I was stepping into a time capsule. So amongst the other great places I've seen, and the many I have not yet seen, and hope to. I would say that is probably my number one favourite."



ONE OF PAST PLEASURES COSTUMES



Advocacy Update

For the latest information visit
www.nattrust.com.au/advocacy

For issues in the City of Melbourne look at our saveourcity.com.au and Melbourne Heritage Action's (MHA) melbourneheritage.org.au. MHA is supported by the Trust.

City of Melbourne heritage controls

In November 2011, the City of Melbourne Future Planning Committee received a report of the 34 submissions made to the heritage overlay review C186. The report has recommended an additional 99 places for a heritage overlay control. Of the 28 submissions received six were in support, including our own detailed submission. The Council resolved to request the Minister for Planning to appoint an Independent Panel to consider the submissions.



BACCHUS MARSH AVENUE OF HONOUR

Bacchus Marsh Avenue of Honour

At time of writing (late 2011) the Heritage Council has forwarded their report to Minister of Planning on the permit appeal by VicRoads and Moorabool Shire Council against refusal by Heritage Victoria to issue a permit for construction of a roundabout on the Avenue of Honour in Bacchus Marsh.



YOUNGHUSBAND WOOLSTORES, KENSINGTON (JUNE 2011)

Younghusband Wool Stores, Elizabeth Street, Kensington

In November 2011 Melbourne City Council's Future Melbourne Committee unanimously voted to reject a plan to rezone the Younghusband Wool Store and turn it into apartments. Closed more than 20 years ago, the massive 110-year-old former wool store is currently home to more than 50 artist studios and small businesses. The owners had sought to rezone the site from industrial to mixed use, and demolish much of the wool store. The Trust was one of nearly 400 objecting submitters, and also spoke against the proposal at the meeting. Lord Mayor Robert Doyle proposed the motion to abandon the rezoning before a packed audience of more than 200 people.

was the subject of a further two days of hearings in November, at which we also appeared.

We have also nominated the adjoining building, the former Hawthorn Motor Garage (1912), to the Victorian Heritage Register. The building is proposed to be altered and have several levels of apartments added.



PROPOSED CASTLEMAINE POLICE STATION

Castlemaine Police Station

The Mt Alexander Branch was very active in 2011 lobbying for an improved design for the proposed police station in Castlemaine. The location and siting of the police station are not disputed, only the design, given it will be sited in the sensitive central heritage precinct. The Shire failed to determine the matter within the statutory 60 days so Victoria Police has lodged at VCAT and we are a party to the proceedings, which will be heard in February. Mediation in November between all the parties involved was unsuccessful.

Heritage Precincts in Boroondara

We were a party to Planning Panels Victoria consideration of Hawthorn Heritage Precincts Study amendment C99 in October 2011. The precincts are West Hawthorn Village, Manningtree Road area, Glenferrie Road Activity Centre area and Lisson Grove area. Our expert witness was Rohan Storey. The matter of 733 Glenferrie Road (1902 doctors surgery & residence), the demolition of which has already been refused by VCAT,



QUEEN VICTORIA MARKET

Queen Vic Market

At time of writing it is believed the release of the City of Melbourne's strategic vision for the future of the market is imminent. There was speculation in mid 2011 about possible underground car parking and the likely impact of such works on the remains of the estimated 10,000 people buried there, including both Aboriginals and early European settlers. Furthermore, a 30m tower is proposed for 450 Queen Street, located in the heritage overlay directly opposite the market. The area has an additional height control that considers new buildings of just 20m. We objected and the council refused the permit in December 2011.



W CLASS TRAM

W Class Trams

We received a letter in September 2011 from Minister for Transport Terry Mulder confirming the government's commitment to \$8 million over four years for upgrading the W Class fleet. Works will include some upgrades to safety and engineering modifications. The government has committed to work with Yarra Trams and local councils to operate restored trams in "some key activity centres."



LONG JETTY, PORT WELSHPOOL UNDER CONSTRUCTION, C1936 (COURTESY BOB MCDONALD)

Port Welshpool Long Jetty

Plans to restore the historic Port Welshpool Long Jetty (as yet not included on the Victorian Heritage Register) have received a significant boost with the Victorian Coalition Government announcing a further \$2 million towards the project in addition to the \$3 million committed during the budget to fulfill its election commitment. Deputy Premier and Minister for Regional and Rural Development Peter Ryan also announced at a community evening at Port Welshpool in November that the South Gippsland Shire Council was also allocating \$1 million for the Long Jetty restoration. A full timber restoration will cost approximately \$11 million. The council will make a submission to the Commonwealth under the Regional Development Australia Fund for a contribution towards the project. We are delighted that the project has attracted significant state government funding, and we are working with the local community to insist on a complete restoration in timber as opposed to a concrete deck, which still remains an option for asset manager Gippsland Ports.

Kirwans Bridge, Nagambie

The optimistic outlook for Port Welshpool Long Jetty is contrasted to the imminent

demise of Kirwan's Bridge. At time of writing the Strathbogie Shire Council has just applied to Heritage Victoria for a permit to demolish the Kirwan's Bridge and replace it with a new concrete bridge of a similar appearance, in the same location. Opened in 1890, Kirwan's Bridge has a uniquely-angled and exceptionally-long timber deck with occasional passing bays. It is, with the Barwon Heads Bridge, equally the longest timber road bridge in Victoria, with a deck length of approximately 308 metres. Its original tall timber-trestle piers are largely immersed under Lake Nagambie and its ageing timber deck has been narrowed for one-way traffic.

Woollen Mills, Nelson Place, Williamstown

The owners had provided Council with an indicative development proposal for 412 dwellings, varying in height from three to thirteen storeys. This was not supported by Hobson's Bay City Council and the matter was referred to an Advisory Committee. Five precincts with height limits between 10m and 25m have been recommended by the Committee. Whilst the draft policy encourages adaptive re-use of heritage buildings, locally significant buildings, such as the former Port Phillip Stevedore Club Hall, the former Telegraph Hotel, the former Britannia Hotel, the former Prince of Wales Hotel and the former Oriental Hotel will no doubt be threatened with demolition.

NATIONAL
TRUST

HERITAGE FESTIVAL
INNOVATION
+ INVENTION 2012

2012 National Trust Heritage Festival *Innovation + Invention*

We are again excited to celebrate Victoria's unique built, natural and cultural heritage. The 2012 National Trust Heritage Festival *Innovation+Invention* celebrates inspiration and innovation through Australia's heritage, past, present and future.

The boomerang, the rotary clothes hoist, Aussie Rules football and Ned Kelly's armour are all icons of Australian invention. Australians were the first to fly across the Pacific, we created the black box flight recorder and creatively built the extraordinary Murtoa Stick Shed, while lesser known examples of our ingenuity include trousers with permanent creases, the 'Ute', multi-focal contact lens and the first feature length film in 1906!

You are invited to join in the 2012 National Trust Heritage Festival *Innovation+Invention*, to be celebrated



Festival app

This exciting iPhone app, will allow users to search for events based on area, type of event and date.

For example the app will enable you to plan everything about your trip from the festival events to accommodation and nearby local attractions. You would use the app to visit the Cape Otway Lighthouse as part of the Festival, climb the stairs to the viewing station and then use your app to find somewhere to have lunch and stay after your exciting heritage filled day! Experience the wonders of changing technologies that have guided ships to safety and just allowed you to book a room! The app will be available in March from www.natstrust.com.au



GILBERT TOYNE'S ORIGINAL ROTARY CLOTHES LINE

across Australia for the first time as a nationwide theme adopted by all National Trust offices. Through talks, tours, exhibitions and events the National Trust invites you to explore our heritage of innovation and invention and develop a better understanding of the ingenuity and resourcefulness that shaped Australia.

Enclosed with this edition of Trust News, you will find your 2012 National Trust Heritage Festival *Innovation+Invention* program. This printed program of dynamic and fun heritage events across Victoria is just the right size to throw in your bag or glove box and start the discovery of Victoria's premier heritage attractions. Even more pocket-size however is the 2012 National Trust Heritage Festival *Innovation+Invention* iPhone app. The free app will be downloadable in March from www.natstrust.com.au/heritage_festival/heritage_festival_2012.

Lost! 100 Lost Buildings of Melbourne



Imagine standing at the corner of Bourke and Exhibition Streets and being able to see not only the Southern Cross as it was, but the Eastern Market that once stood there before the Hotel? Imagine no longer – just download *Lost!*

On 19 March, we will launch a new iPhone app. Consistent with our educative mission, the engagement of new audiences through new technologies has proven to be very effective. Developed through the overwhelming appeal of our successful panel exhibition *Loved and Lost: The Battle for Melbourne*, the new app examines the lost buildings of the Melbourne CBD. *Lost! 100 Lost Buildings of Melbourne* is a dynamic and exciting app that uses augmented reality to allow the user a 3D understanding of the buildings.

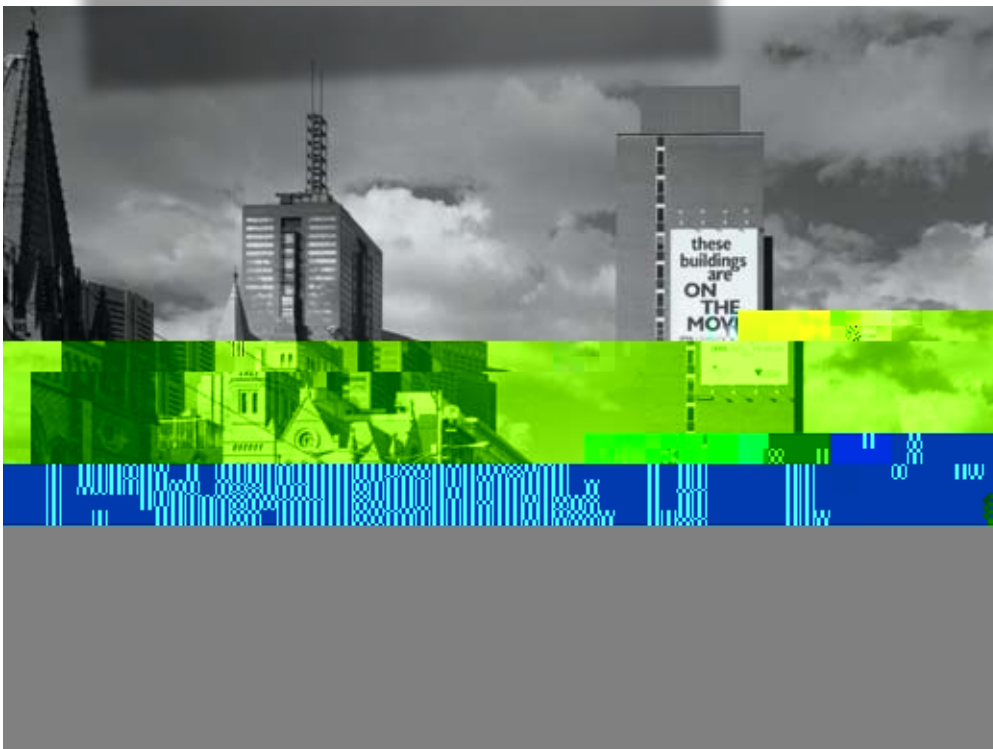
Grab your iPhone and head to the CBD to experience the city in a new (and old!) way. You will be able to view 90 'unlocked' buildings from home but not until you are within 50 metres of another 10 will you be able to access their 'locked' files! If ever you needed incentive to get out and about, this is it! Information and photos of these often long demolished buildings will be available, as well as updates on buildings currently at risk in the city.

Working with WSP Digital, the successful creators of *Trust Trees*, we have developed a user-friendly and informative app that will reward users for their curiosity. The app will be updated several times a year with more photos and details on existing buildings as well as new 'Lost!' buildings and sites.

The *Loved and Lost* exhibition is on at Tasma Terrace until early March, then moves to Federation Square.

LEFT: FEDERAL HOTEL
CNR KING & COLLINS,
MELBOURNE (1888-1972)

BELOW: THE GAS AND FUEL
BUILDINGS, FLINDERS
STREET, MELBOURNE
(1967-1996)



OBITUARY



Merv Death

The National Trust was saddened by the passing in October 2011 of Merv Death, Volunteer Property Manager at the Federal Standard Printing Works in Chiltern, Honorary Member and long-time Trust supporter.

Merv and his wife Barb have spent countless hours as volunteers, maintaining the old printing equipment at the Works, which included keeping the machinery in running order, as well as the task of sourcing out of date spare parts.

Merv will be greatly missed, and we extend our sincere condolences to his family.

Following Merv's passing, his wife Barb has decided to step down as Volunteer Property Manager, we would like to thank her for her years of tireless work for the Trust at the Federal Standard Printing Works.

Trust Trees turns a new leaf at the Melbourne International Flower and Garden Show

Join us at our marquee and meet our gardeners for expert advice.

We are pleased to announce that the next free upgrade will be in March at the 2012 Melbourne International Flower and Garden Show. The show runs from Wednesday 28 March – Sunday 1 April 2012 in the Carlton Gardens, so put the dates in your diary and visit the National Trust in our own marquee. Our gardeners will be on hand to provide advice, so bring along your questions. We will be selling heirloom plants from our nursery at Rippon Lea, and much more. Encourage your friends to come along and join the Trust at special show prices. If they join at the show you will go into the draw for a valuable prize.

Trust Trees showcases (with GPS functionality) the Trust's Register of Significant Trees. Funding from *Victoria's Heritage Grants* and cutting edge technology has engaged the community and encouraged a greater understanding of, and access to, our natural heritage. More than ever, Victorians have shown that significant trees are a valuable part of our heritage.



ACER PAMATUM SASAFRASS STEVE FITZGERALD



Proportional Representation Society of Australia

ABN 31 010 090 247
www.prsa.org.au
info@prsa.org.au

National Trust of Australia (Victoria)

Result of National Trust Board Elections 2011 counted by PRSA

Declared by Kathy Pangratis, Returning Officer, National Trust of Australia (Victoria)

See quota-preferential PR rules that PRSA uses for count at www.prsa.org.au/rule1997.htm
See National Trust of Australia (Victoria) poll results in 2006 at www.prsa.org.au/ntvic06.htm

Number to be elected: **2** Date: 14th November 2011
Valid voting papers: **746** Invalid voting papers: **4**
Quota for election: **33.33%** (**248.67 votes**)

The two elected candidates' names have a yellow background. It is also shown from the point at which each was elected. The progress total at the point of each candidate's election is shown in **magenta** below. Such progress totals at or above a quota (**248.67 votes**) are underlined.

Candidates	First Preference Votes		Stage 2 of Count		Stage 3 of Count		Election Status
	Percent	No.	Exclusion of BRAIN	Exclusion of DAVIS	Exclusion of DAVIS	Exclusion of DAVIS	
			Details	Progress Total	Details	Progress Total	
BRAIN, Peter	14.21%	106	-106	0	0	0	Not elected
SMITH, Charlotte	21.18%	158	43	201	68	269	Elected
DAVIS, Kingsley	18.77%	140	26	166	-166	0	Not elected
THORNTON, Des	25.60%	191	13	204	51	255	Elected
HEALY, Jacqueline	20.24%	151	23	174	42	216	Not elected
Non-transferable			1	1	5	6	
Totals	100.00%	746		746		746	

Upcoming Events

**FEBRUARY 2012
– MAY 2012**

Visit www.natrust.com.au/events for new events and additional information on events listed below. Entry fees apply for Trust members for special fundraising events at Trust properties. 'Members' prices listed are for Trust members only and some events require pre-bookings.

Please note: The event details below are correct at time of printing, but are subject to change. To confirm information, the Trust recommends, phoning properties or visiting www.natrust.com.au, before purchasing tickets or attending the events.

National Trust Property Events

BARWON PARK

105 Inverleigh Road, Winchelsea (off the Princes Highway, Winchelsea, Melways Ref X611B8) located 30 minutes from Geelong and Colac and 90 minutes from Melbourne.

Lady Chatterley's Lover

WHEN: Friday 24 and Saturday 25 February 2012

TIME: 7pm – 9.30pm

COST: Adult \$40, Concession \$35, Child \$25

A romantic and sensuous night of theatre under the stars set in the beautiful surrounds of Barwon Park. D.H. Lawrence's erotically charged and psychologically powerful depiction of adult relationships comes to life in the foreground of the grand Mansion. BYO picnic. Refreshments are available.

CONTACT: 03 5267 2209 or 1300 122 344 for more information

www.shakespeareaustralia.com.au

BOOKINGS: can be made by calling 1300 122 344. Tickets can also be bought at the onsite booking office if not sold out prior

Summer Concert

WHEN: Sunday 26 February 2012

TIME: 2.30pm – 4.30pm

COST: Adult \$22.50, Concession \$17.50

Light Classical music performed in the delightful enclosed courtyard featuring piano, violin, clarinet and tenor. View the Mansion from 1.30pm and enjoy the recital followed by refreshments.

CONTACT: 03 5244 3280

BOOKINGS: can be made by calling

03 5244 3280. Tickets can also be bought at the onsite booking office if not sold out prior.

Classical Sounds at Barwon Park Mansion

WHEN: Sunday 25 March 2012

TIME: 2pm – 4.30pm

COST: Adult \$40, Concession \$25 Member \$35

Enjoy classical music at the historic Barwon Park Mansion with a concert featuring piano, violin and cello. This varied and sparkling program features Darryl Coote, Miwako Abe and Rohan de Korte performing Beethoven, Bach, Debussy and Piazzolla. The Mansion will be open for visitors to admire and the concert will be followed by afternoon tea.

CONTACT: Trudi 03 5267 2209 for more information or visit www.natrust.com.au and www.teamofpianists.com.au

BOOKINGS: essential Team of Pianists 03 9527 2581

COMO HOUSE AND GARDEN

Corner Williams Road and Lechlade Avenue, South Yarra (Melway: 58 G2)

Spook Spotters Twilight Tours

WHEN: 5 April, 3 May, 7 June, 5 July, 2 August, 6 September and 4 October 2012

Ghost tour of Como House is back by popular demand. In cooperation with Spookspotters, Ghost tours this winter will be more exciting than ever. Not suitable for children under 18 years.

TIME: 6.30pm

COST: \$35 Full, \$30 Concession, \$25 National Trust Member

CONTACT: National Trust Booking Office 03 86637260

BOOKINGS: www.comohouse.com.au or 03 8663 7260

Olden Days School Holiday Programme

WHEN: 4 April, 11 April, 4 July, 11 July, 26 September, 3 October 2012

Ever wanted to take a trip in a time machine? Rewind and replay at Como House and Garden this school holidays with a program that will send the world in backward spin!

TIME: 10.00am- 1.00pm

COST: \$15 per child, \$10 National Trust Member

CONTACT: National Trust Booking Office 03 8663 7260

BOOKINGS: essential www.comohouse.com.au or 03 8663 7260

Vintage Clothing Sale

WHEN: 17 and 18 March 2012

TIME: 10am to 4pm each day

COST: entry is a gold coin donation, clothing prices will be displayed

The retro clothing sale held one autumn weekend in March has proved so wildly successful that it has outgrown the garage where it all started and will now be held at Como House and Garden. Organised entirely by volunteers, it features stunning, late 20th century designer outfits and accessories that have all been donated. The proceeds of the sale will be put towards the conservation and display of garments in the Trust's extensive Costume Collection.

CONTACT: Como House and Garden on 03 9827 2500

BOOKINGS: Not required for general entry, but will be for special preview entry please visit www.comohouse.com.au

LABASSA

2 Manor Grove, North Caulfield (Melway: 58 H11)

Aesthetic Influences in Ceramics, Furniture and Interior Design

WHEN: Sunday 19 February 2012

TIME: 10.30am – 4.30pm

COST: General: Adult \$8, Concession/Child \$5.50, Family \$20, Member Free

An eclectic collection of ceramics from a private collector, viewed amongst ebonised furniture, embossed wallpapers and tiles within Labassa, and all influenced by the Aesthetic Movement. Tours of the house at 11am and 2pm. External tour at 12.30pm. Tea Rooms operate throughout the day.

CONTACT: 03 9527 6295 or 03 9509 6596 for further information. No bookings required

The Guardsman's Cup of Tea by Thomas Brown – presented by the Adelphi Players Theatre Company

WHEN: Tuesday 17 April – Sunday 22 April 2012

COST: General: Adult \$15, Concession \$12 Member \$12

An elegant comedy of manners portrays a conflict between a guard and his pompous superior officer.

CONTACT 03 9690 1593 for further information.



Upcoming Events (continued)

LA TROBE'S COTTAGE

Cnr Birdwood Avenue & Dallas Brooks Drive,
The Domain, Melbourne (Melway: 2L A1)

Open House at LaTrobe's Cottage

WHEN: Every Sunday during October to May
Last Sunday of the month during June to September

TIME: 2pm – 4pm

COST: General: Adult \$5, Concession \$3, Child \$3, Family \$10, Members (NT, La Trobe Society, Friends of La Trobe's Cottage) Free

Tours will focus on Charles Joseph La Trobe as the visionary administrator of the Port Phillip District in the early years of the settlement of Melbourne and will provide a fascinating glimpse into family life at his "Jolimont" estate, with his wife Sophie and their children.

CONTACT: 03 9563 6363

BOOKINGS: not required

LaTrobe's Birthday Celebration

WHEN: Sunday, 25 March 2012

TIME: 2.30pm to 4pm

COST: \$30, La Trobe Society members Free

Guest speaker: Professor Richard Broome, Professor of History at La Trobe University, whose lecture will be preceded by refreshments. Afterwards there will be a ceremonial cutting of a birthday cake and champagne in celebration of Charles Joseph La Trobe's 211th birthday.

CONTACT: Dr Dianne Reilly, 03 9646 2112

BOOKINGS: required by 18 March. Please contact Dianne on 03 9646 2112 or dmreilly@optusnet.com.au for more information.

MOORAMONG

Glenelg Highway, Skipton 3361

Open Day

WHEN: Saturday 7 April 2012
Sunday 6 May 2012

TIME: 12pm – 4pm

COST: Adult \$10, Concession/Child \$6, Family \$20.

What better way to spend a Sunday afternoon than exploring the warm and cosy homestead of the late Scobie and Claire Mackinnon. Come and view the opulent decor and furnishing of the home including many art deco objects are curios collected from all over the world. Bring a picnic lunch and roam the extensive gardens, Park and outbuildings or relax and watch the waterbirds on the house dam from the bird hide. Afternoon Tea available.

CONTACT: 03 5340 6556

BOOKINGS: not required

MULBERRY HILL

385 Gulf Links Road, Langwarrin South
(Melway: 107 C2)

Mothers Day

WHEN: Sunday 14 May, 2012

TIME: 12pm - 4.30pm

COST: Adult \$15, Concession \$14

Treat your mum to a wonderful day at Mulberry Hill. Take a tour of the Lindsay's beautiful home and afterwards, relax in the courtyard for Devonshire tea.

CONTACT: Sharon 03 5971 4138 or 0407 090 794

BOOKINGS: essential by Friday 3 February, 2012

NEHILL BROTHERS FARM

Nehill & Alexanders Road,
South Purrumbete 3260.

Open Days

WHEN: Second Sunday of the Month from
February to April

TIME: 10am – 4pm

COST: Free

Nehill Brothers Farm Living Heritage Reserve conserves and displays rare breeds of Australian farm animals. Includes entry to the Nehill Brothers Farm Living Heritage Reserve with tours and sessions about rare breeds of Australian farm animals.

CONTACT: www.nattrust.com.au or
03 9656 9800

BOOKINGS: not required

POLLY WOODSIDE

2A Clarendon Street, South Wharf
(Melway: 2E K9)

Pirate Sundays

WHEN: First Sunday of the month

TIME: 10am – 4pm

COST: General: Adult \$15, Concession \$12, Child \$8, Family \$42, Member Free

X marks the spot at Polly Woodside on the first Sunday of each month Dress as a pirate and head to Polly Woodside to search for elusive buried treasure, walk the plank, join in pirate arts and crafts and have your face painted.

CONTACT: 03 9699 9760;
www.pollywoodside.com.au
BOOKINGS: not required

StoryTime

WHEN: Every Tuesday

TIME: 11am – 12pm

COST: General: Adult \$15, Concession \$12, Child \$8, Family \$42, Member Free

Fun and interactive storytelling with a wide variety of stories, songs and activities. Stories

are read on the deck on of the Polly Woodside or, in inclement weather, down below!

CONTACT: 03 9699 9760;

www.pollywoodside.com.au

BOOKINGS: not required

PORTARLINGTON MILL

7 Turner Court, Portarlington (Melway: 239 E2)

Geelong Painters Art Show

WHEN: Saturdays and Sundays in February
2012

TIME: 12pm – 4pm

COST: General: Adult \$4, Concession \$3, Child \$2, Family \$10, Member Free

Exhibition and sale of art by local talented painters.

CONTACT: Andrew Mason 03 5259 2804

BOOKINGS: not required

19TH CENTURY PORTABLE IRON HOUSES

399 Coventry Street, South Melbourne
(Melway: 2J K2)

Open Day

WHEN: First Sunday of each month

TIME: 1pm - 4pm

COST: General: Adult \$5, Concession \$3, Child \$3, Family \$10, Member Free

Opportunity to explore the three portable iron houses on site, which are among the few pre-fabricated iron buildings remaining in the World.

CONTACT: Pauline Reid 03 9645 7517

BOOKINGS: not required

Special Open Day in conjunction with South Melbourne Summer Festival

WHEN: Sunday 19 February 2012

TIME: 11am – 6pm

COST: General: Adult \$5, Concession \$3, Child \$3, Family \$10, Member Free

Opportunity to explore the three portable iron houses on sites, which are among the few pre-fabricated iron buildings remaining in the World.

CONTACT: Pauline Reid 03 9645 7517

BOOKINGS: not required

Historical Guided Walk – Window Shopping on Emerald Hill

WHEN: Sunday 19 February 2012

TIME: 1.45 for a 2pm start – 4pm

COST: General: Adult \$20, Concession \$18, Child \$10, Member: Adult \$15, Child \$5

A guided 1.5hr walk exploring the commercial life of this historic suburbs in conjunction with the South Melbourne Summer festival

CONTACT: Pauline Reid 03 9645 7517
BOOKINGS: essential by 17 February 2012 by contacting Pauline or emailing pih@nattrust.com.au www.nattrust.com.au/events

Historical Guided Walk – Mansions and Gardens

WHEN: Sunday 18 March 2012
TIME: 1.45 for a 2pm start – 4pm
COST: General: Adult \$20, Concession \$18, Child \$10, Member: Adult \$15, Child \$5

A guided walk around the Victorian Terraces of South Melbourne

CONTACT: Pauline Reid 03 9645 7517 or Patricia 9699 3172
BOOKINGS: essential by 15 March 2012 by telephone or emailing pih@nattrust.com.au www.nattrust.com.au/events

Historical Guided Walk – From Tents to Terraces

WHEN: Sunday 15 April 2012
TIME: 1.45 for a 2pm start – 4pm
COST: General: Adult \$20, Concession \$18, Child \$10, Member: Adult \$15, Child \$5

From Tents to Terraces - A guided walk which explores the impact of the 1850's gold rush on the growth of Emerald Hill – the original name for South Melbourne.

CONTACT: Pauline Reid 03 9645 7517 or Patricia 9699 3172
BOOKINGS: essential by 12 April 2012 by telephone or emailing pih@nattrust.com.au www.nattrust.com.au/events

Historical Guided Walk – Lanes and Byways

WHEN: Sunday 20 May 2012
TIME: 1.45 for a 2pm start – 3.45pm
COST: General: Adult \$20, Concession \$18, Child \$10, Member: Adult \$15, Child \$5

A guided 1.5hr walk exploring the bluestone lanes of South Melbourne.

CONTACT: Pauline Reid 03 9645 7517
BOOKINGS: essential by 15 March 2012 by contacting Pauline or emailing pih@nattrust.com.au www.nattrust.com.au/events

RIPPON LEA HOUSE AND GARDENS

192 Hotham Street, Elsternwick (Melway: 67 F2)

Storytime

WHEN: Every Thursday from November 2011 to April 2012
TIME: 11am – 12pm
COST: Parents \$7, Child over 3 years \$3
Fun and interactive storytelling with a wide variety of stories/songs and activities for the little ones aged between 3 and 7 years (approx). Stories are read outdoors in the gardens under the magic storytime tree.

Contact: 03 9523 6095 or visit www.ripponlea-estate.com.au

Summer Sessions 2012

WHEN: Every Sunday from January through to March (Except 1 January and 26 February, 2012)
TIME: 12pm – 4pm
COST: Adult \$7, Concession \$5, Child \$3, Family \$16

Children's art and craft activities i.e. face painting, bead decorations, badge making, tug o wars, handball target.

Live music and entertainment. Bring along a picnic and blanket to enjoy and stake out a place under the windmill. Be entertained with live music, or play a spot of croquet. The kids can be entertained with supervised activities, crafts and games.

CONTACT: 03 9523 6095 or visit www.nattrust.com.au
BOOKINGS: Purchase tickets at the gate, no need to pre-book.
Any Other Details: All parking strictly off site.

Annual Teddy Bears' Picnic

WHEN: Sunday 26 February, 2012
TIME: 10am – 4pm

Join Ripplea Bear in celebrating his 22nd Birthday! Bring along a picnic, a rug and your favorite teddy bear. Kids and adults can enjoy games, activities and live entertainment.

Limited parking is available offsite. Public Transport is easily accessible.

CONTACT: 03 9523 6095 or visit www.ripponleaestate.com.au
BOOKINGS: recommended. Tickets can be pre-purchased online from the events page or www.nattrust.com.au or www.ripponleaestate.com.au or at the front gate on the day of the event.

Rippon Lea Heritage Apple Sales Day

WHEN: Sunday 18 March 2012
TIME: 10am - 4pm
COST: Free entry into the garden with a purchase of an apple tree.

Sale of rare heritage apple trees, propagated from Rippon Lea's orchard collection

CONTACT: Justin Buckley 9523 6095
BOOKINGS: not required

Rippon Lea Easter Fun Day 2012

WHEN: Sunday 8 April 2012
TIME: 11am – 4pm
COST: Adults \$12, Concession \$9, Child over 3 years \$6, Family \$30

Families can bring along a picnic and spend an afternoon of fun in the gardens. Ripplea Bear will be making an appearance along with the Easter Bunny. There will be an Easter egg hunt, an open house of the mansion as well as baby chicks and bunnies to cuddle.

CONTACT: 03 9523 6095 or visit www.nattrust.com.au
BOOKINGS: Highly recommended. Tickets can be pre-purchased online, or at the front gate on the day of the event.

Easter School Holiday Program 2012

WHEN: 2, 4 and 6 April 2012
TIME: 10.30am - 12.30pm
COST: Children \$6 (primary school aged only). One parent / carer free entry with each participating child.

Children will have the opportunity to play old fashioned games such as tug-of-war, an egg and spoon race, and croquet. There will be boat rides on the lake and all the fun of our Creature Catcher discovery trail.

CONTACT: 03 9523 6095 or visit www.nattrust.com.au
BOOKINGS: Essential. Limited spaces available. Tickets can be pre-purchased online.

OLD MELBOURNE GAOL

377 Russell St, Melbourne

Ghost Seekers

WHEN: Once a month on Saturdays, please check the website for more details
TIME: During daylight savings 10.30pm – 3.30am, non day light savings 9.30pm – 2.30am
COST: Single \$140, Double \$220

The Ghostseekers team conducts paranormal investigations in the Old Melbourne Gaol.

BOOKINGS: Essential. Tickets available online at www.oldmelbournegaol.com.au
CONTACT: 03 8663 7228 or www.oldmelbournegaol.com.au for more information

Ghosts, What Ghosts? – Night Tour

WHEN: NEW weeknight program – Tuesdays
TIME: During daylight savings 8.30pm – 10pm, non day light savings 7.30pm – 9pm
COST: Adult \$35, Concession / NT member \$30 (not recommended for children under 12 yrs age).

This Gaol is a grim place. It has a dark history. Stories abound of an unexplainable presence. Over many years, these stories come from visitors and staff alike. None have been proved. Many are compelling.... 'GHOSTS...WHAT GHOSTS?'

BOOKINGS: essential
CONTACT: 03 8663 7228 or www.oldmelbournegaol.com.au/events for more information and online bookings.

'Such a Life' performance at OMG C&JE

WHEN: Weekends and Wednesdays (School Holidays only)
TIME: 9:30am – 5pm Daily (Closed Christmas Day)
COST: Included in general admission: Adult \$22, Concession \$18, Child (5-15yrs) \$12, Member Free

Witness this powerful performance that takes you inside the life and legend of Ned Kelly.

BOOKINGS: not required
CONTACT: 03 8663 7228 or www.oldmelbourne-gaol.com.au/events for more information



Upcoming Events (continued)

Hangman's Night Tour

WHEN: Most Monday, Wednesday, Friday and Saturday nights
TIME: During daylight savings
8.30pm – 10pm, non day light savings
7.30pm – 9pm
COST: Adult \$35, Concession / NT member \$30 (not recommended for children under 12 yrs of age).

What stories would a hangman tell you if he was guiding you around the Gaol, where he was the master of the rope?

What other stories from the dark side will find their way into this performance?

Book the Hangman's Night Tour and find out... if you're game?

BOOKINGS: essential
CONTACT: 03 8663 7228 or www.oldmelbournegaol.com.au/events for more information and online bookings.

Branch Events

ACTIVITIES COMMITTEE NATIONAL TRUST OF AUSTRALIA (VIC)

Blue Lotus Watergarden

WHEN: Sunday 19 February, 2012
TIME: 11.15am for 11.30am start
COST: General: Adult \$35, Child \$29.
Member: Adult \$30
VENUE: Blue Lotus Watergarden, Warburton Highway (Melway 288 H8).

Map provided on booking

A tour and talk has been arranged to fully appreciate this magical place. Wheelchair friendly, this self drive event is ideal for everyone to enjoy. Luncheon included in cost.

CONTACT: Rosemary Henderson 03 9336 7481 for payment and event details
BOOKINGS: essential by Monday 13 February 2012

Tramboat to Williamstown

WHEN: Thursday 8 March 2012
TIME: 9.30am for a 10am departure
COST: General: Adult \$47, Child \$38.
Member: Adult \$43, Child \$38.
VENUE: Departure Victoria Harbour. Map or location and departure details with booking

Departing Victoria Harbour cruise in the famous Tramboat downstream through the port of Melbourne to the historic port of Williamstown. Time to stroll around the port before a fish and chips luncheon onboard for the return trip. Delicious slices served for morning tea.

CONTACT: Rosemary Henderson 03 9336 7481 for payment and event details
BOOKINGS: essential by Monday 27 February 2012

Visit to Westgarthtown

WHEN: Sunday 6 May 2012
TIME: 11am
COST: General: Adult \$15, Child \$15.
Member: Adult \$12.50, Child \$12.50.
VENUE: 100 Gardenia Road, Thomastown.
Melways Ref 8 H5

Enjoy a light morning tea followed by a tour of Westgarthtown, the heritage classified German Village at Thomastown. The tour, conducted by a local historian, will visit the Ziebel's farm complex including the out buildings, the Lutheran church, cemetery and neighbouring houses.

CONTACT: Rosemary Henderson 03 9336 7481 for payment and event details
BOOKINGS: essential by Monday 30 April 2012

McClelland Art Gallery and Mulberry Hill

WHEN: Monday 22 April 2012
TIME: 11am
COST: General: Adult \$39, Child \$30.
Member: Adult \$34, Child \$30.
VENUE: McClelland Art Gallery and Sculpture Garden - 390 McClelland Drive, Langwarrin. Melways Ref 103 E3.
Mulberry Hill - 385 Golf Links Road, Langwarrin. Melways Ref 107 C2

Join us for a visit to the McClelland Art Gallery and Sculpture Garden. After lunch travel to Mulberry Hill (a National Trust property) for a tour and afternoon tea. This is a self drive event however if enough people are interested a coach could be arranged for an added cost. Please let us know.

CONTACT: Rosemary Henderson 03 9336 7481 for payment and event details
BOOKINGS: essential by Friday 13 April 2012

GEELONG & REGION BRANCH

Lovely Lorne and Great Ocean Road

WHEN: Tuesday 28 February 2012
TIME: 11am – 3pm
COST: Gold coin donation
VENUE: Fig Tree Community Mountjoy Parade
Lorne, (opposite information centre)

Visit Lorne Historical Centre & places of interest and heritage value together with a film of Great Ocean Road produced by school students. BYO lunch. Tea and coffee provided.

CONTACT: David Walker 03 5289 1569 for enquiries

Stony Rises Homestead & Nehill Brothers Farm

WHEN: Tuesday 27 March 2012
TIME: 11am – 3pm
COST: Gold coin donation.
VENUE: 2020 Princes Hwy Pirron Yallock
(approx 20kms west of Colac)

A special opportunity to visit a rare surviving early 1860s stone home and outbuildings with beautiful stone walled garden. Our hosts Rob and Margaret Wuchatsch. A tour of the property and meeting. BYO lunch.

Optional extra: At 3pm go for a 15 minute drive to the Nehill Bros Farm South Purumbete. Recently opened National Trust Living History Reserve.

CONTACT: Jennifer Bantow 0407 504 262
BOOKINGS: Essential by Sunday 25 March 2012

Visit to Barwon Grange Geelong

WHEN: Tuesday 24 April 2012
TIME: 11am – 4pm
VENUE: Barwon Grange, Fernleigh Street, Newtown

Hear the detailed story of Jonathan Porter O'Brien the enigmatic builder of Barwon Grange. An illustrated talk, together with house and garden tours. Followed by Branch Meeting and afternoon tea.

CONTACT: Margaret Tembo 03 5221 5130 for enquiries

MOUNT ALEXANDER BRANCH

Afternoon Tea at Pleasant Grove Strangways

WHERE: Pleasant Grove Strangways (Directions provided on booking)
WHEN: Sunday 4 March 2012
TIME: 2pm – 4.30pm
COST: General: \$15, Member: \$10

Afternoon tea at Pleasant Grove Strangways, a very attractive 1860's house with an interesting history, set in a lovely garden with rolling valley views.

CONTACT: Brian Tresidder 03 5472 1108 or 0429 450 055 or tresidderbrian@yahoo.com.au for enquiries or to book
BOOKINGS: Essential by Sunday 26 February 2012

National Trust Events

WALKING TOURS

National Trust Heritage Walking Tours

WHERE: Meet at Tasma Terrace, 4 Parliament Place, East Melbourne
WHEN: Every Tuesday, Thursday and Saturday
TIME: 10am Tuesday and Saturday 2pm Thursday
COST: General \$35, Member \$30

Would you like to know the stories, people and places that helped shape Melbourne? Join us on the National Trust Heritage Walking Tour where we show you some of Melbourne's majestic buildings. With a qualified tour guide and small groups, the best way to see Heritage Melbourne is up close and on foot.

CONTACT: National Trust (Vic) Bookings Office, 03 8663 7260
BOOKINGS: essential bookings@nattrust.com.au by 48 hours before departure date

National Trust Discovery Walks - East Melbourne

WHERE: Meeting point: Corner of Clarendon Street and Wellington Parade (please meet on the Hilton Hotel corner)
Finishing point: Vicinity of Wellington Parade

WHEN: Sunday 5 February 2012
TIME: 10am – 12pm
COST: General: \$30, Member: \$25

Since its settlement in 1840, East Melbourne has been one of Melbourne's most affluent suburbs. Although a fairly small area, it contains some of the oldest Victorian homes and terrace houses and parks and gardens in Melbourne. Experience one of the finest suburbs in Melbourne and explore its superb streetscapes and fine historical buildings.

CONTACT: National Trust (Vic) Bookings Office, 03 8663 7260
BOOKINGS: essential. Available online at www.nattrust.com.au

National Trust Discovery Walks - Monuments and Art in the CBD: Walk 1

WHERE: Meet: In front of the Princess Theatre
Finish: Collins and Spring Street area.
WHEN: Sunday 22 April 2012
TIME: 10am – 12pm
COST: General: \$30, Member: \$25

This walk is the first in a fascinating series looks at public art and monuments in the CBD Melbourne from the colonial period to the present day. Be surprised and delighted as we take an artistic look at 'Marvellous Melbourne'. Includes coffee.

CONTACT: National Trust (Vic) Bookings Office, 03 8663 7260
BOOKINGS: essential. Available online at www.nattrust.com.au

National Trust Discovery Walks - Happy 150th Birthday Old Treasury Series – The Melbourne City Baths

WHERE: Meet: In front of the Old Royal Mint, corner William and Latrobe Streets
Finish: Old Treasury Building, Spring Street

WHEN: Sunday 6 May 2012
TIME: 10am – 12pm
COST: General: \$30, Member: \$25

Join Kenneth Park as he talks about the history of the Melbourne City Baths and the important role that the baths has played in 'public health and recreation' in Melbourne. The Melbourne City Baths were designed by J J Clark and we will tour some of the spaces within the building. Includes coffee.

CONTACT: National Trust (Vic) Bookings Office, 03 8663 7260
BOOKINGS: essential – available online at www.nattrust.com.au

National Trust Discovery Walks - Happy 150th Birthday Old Treasury Series – Looking at the architectural legacy of JJ Clark

WHERE: Meet: In front of the Old Royal Mint, corner William and Latrobe Streets
Finish: Old Treasury Building, Spring Street

WHEN: Sunday 13 May 2012
TIME: 10am – 12pm
COST: General: \$30, Member: \$25

This lengthy but delightful walk will take you past some significant architectural contributions of JJ Clark and those of his contemporaries in the CBD. Includes coffee.

CONTACT: National Trust (Vic) Bookings Office, 03 8663 7260
BOOKINGS: essential – available online at www.nattrust.com.au

HERITAGE TRAVEL TALKS

Paris & Napoleon

WHEN: Monday 6 February 2012
TIME: 10am – 11am
COST: General: \$25, Member: \$22
VENUE: JJ Clark Room, Old Treasury Building, 20 Spring Street (intersection of Collins and Spring Streets) MELBOURNE VIC 3000

Napoleon I remains one of those fascinating figures of history whose actions had a profound influence the course of world history. This lecture will take you to Napoleon's Paris to examine this much admired city by looking at some of Napoleon's ambitious building projects for the 'showcase' capital of the French Empire. Light refreshments included.

CONTACT: National Trust (Vic) Bookings Office, 03 8663 7260
BOOKINGS: essential available online at www.nattrust.com.au

Art and Design in the Gardens from around the world

WHEN: Monday 19 March 2012
TIME: 10am – 11am
COST: General: \$25, Member: \$22
VENUE: JJ Clark Room, Old Treasury Building, 20 Spring Street (intersection of Collins and Spring Streets) MELBOURNE VIC 3000

Explore garden landscaping from the perspective of art and design in this wonderfully illustrated lecture on the evolution of landscape design. This lecture is a must for lovers of gardens, art and design. Light refreshments included.

CONTACT: National Trust (Vic) Bookings Office, 03 8663 7260
BOOKINGS: essential – available online at www.nattrust.com.au

Medley Hall Visit

WHEN: Tuesday 27 March 2012
TIME: 10am – 11.30am
COST: General: \$35, Member: \$30
VENUE: Medley Hall, 48 Drummond Street, Carlton 3053

Join Kenneth W Park for a private tour of the newly rejuvenated and redeveloped Medley Hall, one the finest and most flamboyant examples of boom style architecture of the 'Marvellous Melbourne' era followed by morning coffee. Medley Hall was designed in an Italianate Victorian Baroque style by Walter Scott Law. Medley Hall, formerly a grand Victorian mansion Benvenuta, is the smallest residential college of the University of Melbourne in Australia.

Please note some climbing of stairs will be required.

CONTACT: National Trust (Vic) Bookings Office, 03 8663 7260
BOOKINGS: essential by Monday 26 March 2012 – available online at www.nattrust.com.au

Happy Birthday 150th Old Treasury Series – Meet Mr Clark, Architect Extraordinaire

WHEN: Monday 14 May 2012
TIME: 10am – 11am
COST: General: \$25
Member: \$22
VENUE: JJ Clark Room, Old Treasury Building, 20 Spring Street (intersection of Collins and Spring Streets) MELBOURNE VIC 3000

This richly illustrated lecture examines the life and work of John James Clark and his legacy of fine buildings to be found across Melbourne, Victoria and Australasia is quite extraordinary and noteworthy for fine buildings the likes of the Royal Mint, Old Treasury, City Baths, the Brisbane Treasury Buildings, Auckland Town Hall and many more. Light refreshments included.

CONTACT: National Trust (Vic) Bookings Office, 03 8663 7260
BOOKINGS: essential – available online at www.nattrust.com.au



CUT ME OUT

SEE THE SUMMER'S

BEST FILMS

FOR

\$8

PRESENT THIS COUPON AT
CLASSIC CINEMA ELSTERNWICK
AND RECEIVE YOUR TICKET FOR ONLY \$8.00

WITH AN ELECTIC MIX OF FILMS AND SPECIAL EVENTS; A
FULLY LICENCED BAR, IGLOO ZOO YOGURT, PRETZELS
AND OUTDOOR SEATING, THIS IS THE SUMMER TO
RE-DISCOVER THE CLASSIC CINEMA

CLASSIC



www.classiccinemas.com.au • 9 Gordon Street Elsternwick

Terms and Conditions: valid until 30/4/12. Valid for any session before 6pm, Monday – Friday. One coupon per person. Not valid in conjunction with any other offer. Coupon to be surrendered upon redemption. Become a member or join our eNews to receive ongoing benefits.

We're helping
Little Audrey
skip on sunshine.



In 2011 the beloved Skipping Girl sign, or Little Audrey as she's affectionately known, turned 75. We think she deserves a great gift for her birthday – so we're giving her solar.

Now National Trust Members can go solar like Little Audrey – and save.

AGL would like to reward National Trust Members with \$100 off the recommended retail price of a 1kW solar power system and up to \$900 off a 5kW system¹. AGL will also donate \$100 for every kW capacity installed from this offer to the National Trust.

Call 1300 725 140 and quote your membership number to take up this special offer before 29th Feb 2012.



1. Total price of the 1kW system after discount is \$1,999. Total price of the 5kW system after discount is \$15,499. Prices are based on a standard installation in metropolitan areas. The installed prices are conditional on assignment of all qualifying Small-scale Technology Certificates (STCs) to AGL. STC prices are not set by AGL and may change. STC Zone 4 price used which may not be applicable to all applicants. Terms and conditions apply.

AGL3056

PRAHRAN MECHANICS' INSTITUTE VICTORIAN HISTORY LIBRARY

Established 1854

Over 25,000 items of
Victorian history,
resources for genealogy
and much more
available for loan.

www.pmi.net.au
(03) 9510 3393
140 High Street, Prahran VIC

Valuations byjoel

ByJoel can quickly and accurately identify and value your Fine Art, Collectables and Antiques. We have extensive accreditation and over 35 years experience as valuers for the following:

- Australian and International Art
- Superannuation Collections
- Market
- Corporate Collections
- Insurance
- Family Law
- Art Gallery and Museum Collections
- Asset Management
- Cultural Gift Program
- Local Government Reporting

Phone 1300 295 635
www.byjoel.com.au

byjoel WARREN JOEL
AUCTION & VALUATION SERVICES



VICTORIAN NEWS
NATIONAL TRUST



ADVERTISE WITH
THE TRUST...

contact media@nattrust.com.au
or call 03 9656 9800



A Touch of Royalty

To celebrate the Queen's Diamond Jubilee exhibition, the Art Gallery of Ballarat and the National Trust are giving one lucky National Trust member a prize fit for royalty.



In 100 words or less describe the time you most felt like royalty. Please email all stories to membership@natrtrust.com.au by 20 February 2012. The best story will win two nights accommodation in a Royal Suite at Craig's Royal Hotel in Ballarat, a three course dinner for two people, a bottle of regional wine (to the value of \$40), full breakfasts each morning, daily newspapers, valet parking and free admission to the Queen's Diamond Jubilee exhibition at the Art Gallery of Ballarat. The winner will be contacted by the National Trust on 21 February.

Even if you don't win, you can still benefit simply by being a National Trust member. You'll receive a 20% discount to the Queen's Diamond Jubilee exhibition at the Art Gallery of Ballarat. This exhibition of nearly 100 portraits taken by Sir Cecil Beaton over a period of 30 years depicts the Queen in her roles as princess, monarch and mother, and will include a number of rarely-seen photographs alongside extracts from Beaton's personal diaries and letters. It runs from 25 February to 15 April 2012. It's not to be missed.

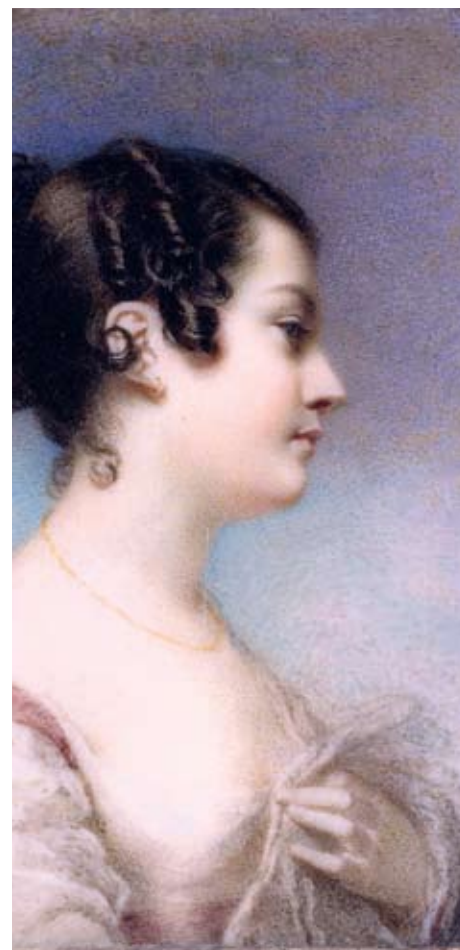
Georgiana's Journal – the New Edition

Georgiana McCrae diligently recorded the world around her – documenting her surroundings and her life in her journal and drawings.

Donated to the manuscript collection of State Library of Victoria by the McCrae family, her journals were edited, compiled and tweaked by her grandson, poet Hugh McCrae and published in his 1934 book *Georgiana's Journal*. Descendant Janet Hay describes these changes as "the alterations my naughty grandfather Hugh made to some of Georgiana's words adding to the interest of this quirky little literary gem and ensuring researchers do not rely on it as a primary source." "Hugh was not an academic, he was a rare poetic spirit; a gifted, unworldly romantic lacking the academic discipline expected of historians today."

Hugh McCrae's book had been in print for over 77 years, but is now sadly no longer available. The Trust in collaboration with the McCrae family is fundraising to reprint a new edition. The Trust has been asked to underwrite the publication. All proceeds of the sale of the book will go to the McCrae Homestead. The publishers, Halstead Press, propose a 5th edition with a forward by historian Marguerite Hancock. The reprint seeks to address some of Hugh McCrae's more fanciful elaborations, making it useful to researchers, and yet retaining the charm and interest of the original edition. Printed on art-paper with colour illustrations, the publication will have broad appeal. If past interest is any indication, the book will be popular.

If you are able to assist us with a donation towards this valuable project, please contact Elizabeth Anya-Petrivna on Tel: 03 9656 9832 or email: elizabetha@natrtrust.com.au



Classifieds

We have over 1 200 people who receive our monthly eNews, if you would like to receive the latest news, sign up today by sending an email to media@natrust.com.au with your details.

AUTHENTIC AGE

Advice on restoration, alteration and furnishing period houses and heritage buildings.

Telephone: (03) 9818 4324 or
www.authenticage.com.au

RICHARD CARTER

Slate craftsman, all roof plumbing inclusive of restoration, repairs and renewals. Period bullnose verandah design and construction. Reg. No. 25058.

Telephone: 0418 566 406 / 9482 4680

SILVER & METALWARE REPAIRS & REPLATING

- Have that small repair done or have your heirlooms fully restored by a silversmith with over 30 years experience in the antique restoration industry
- Services extend to all metals including brass, copper, spelter; also lacquering and antique finished.

Contact us now for a free appraisal and quotation

DUANE LUCAS (03) 9460 1123
11 Kurnai Avenue, Reservoir 3073

Email: info@heritagesilverware.com.au



STAINED GLASS

Glass painting and leadlight. New commissions, restoration and reproduction work.

BRUCE HUTTON Almond Glassworks
Phone (03) 9568 5307
www.almond-glass.com

CHINA ROSE ANTIQUES

See our large range of
Australian and imported antiques at
www.chinaroseantiques.com.au

KOSNAR'S PICTURE FRAMING AND MIRRORS

Restoration of artworks, photographs
picture frames & mirrors, including regilding.
Period Frames, Mirrors, Prints & Etchings.

488 Mt Alexander Road, Ascot Vale.
Telephone: 9370 5744
www.kosnar.com.au

RAPID PAINTING SERVICES

Domestic ~ Interior & Exterior ~ 7-day Service
Restoration Advice ~ Heritage & Contemporary

Contact: Max Joffe - M: 0407 303 388 - Ph: 9563 6363
Email: rapidmax@netspace.net.au

melbourne • sydney • brisbane • canberra

Job: Goods Shed No. 2

Heritage Slate: Trinity Heather

Specification: Slate to match
original size and colour

Architect: Lovell Chen

Builder: Equiset



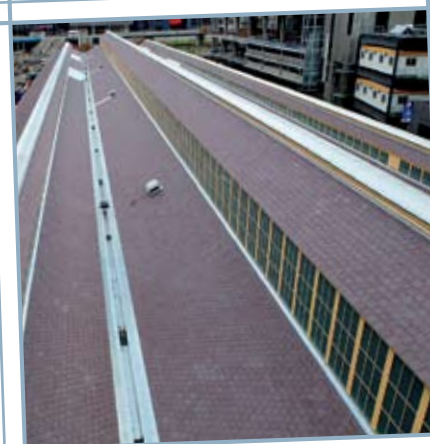
your roofing slate specialist...

Tel 1300 884 334

info@roofingslateworx.com.au
www.roofingslateworx.com.au



elegance • distinction • harmony



ROOFING

SLATES, TILES, SPOUTINGS
& DOWNPIPES BY

*Steeple Jack
Jones*

EDWARDIAN, FEDERATION
AND VICTORIAN ROOF AND
CHIMNEY RESTORATIONS

LICENSED ROOF PLUMBER 40647

0417 556 403
9543 6713

www.steeplejackjones.com

DAMP WALLS

- * Rising damp permanently cured by damp-course installation
- * University developed and tested
- * Over 10000 successful installations Australia-wide since 1981
- * 25 Year written guarantee
- * For free inspection, quote and advice

Phone: 9699 8233

Tech-Dry

Pty. Ltd.

Showroom: 177-179 Coventry Street,
South Melbourne

TUCKPOINTING, BRICKWORK, STONEMASONRY RESTORATION & REBUILDING

City & Guilds of London Institute trained craftsman.
Over 40 years experience.

PAUL BURTON
0408 343 502 or (03) 9789 7890



SPECIALIST PAINTING
TUSCAN TRELLIS

One of Melbourne's leading specialists in painted finishes.

All periods, styles and projects
Metropolitan & Regional areas.

Please call for a folio viewing Rodney & Catherine Ashton.

0419 572 069 / 0419 883 443
or visit www.tuscantrellis.com.au