

VICTORIAN NEWS



NATIONAL TRUST

'Our heritage... yesterday,
today and tomorrow'

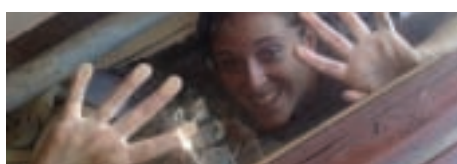
November 2011



P3 | CIRCA THE PRINCE

P4 | LEARNING IN DISGUISE

P11 | I BLAME THE TRUST



Events in Brief: November 2011 February 2012

National Trust of Australia (Vic)

Tasma Terrace, 4 Parliament Place, East Melbourne, Victoria 3002

Telephone: 03 9656 9800 Facsimile: 03 9650 5397 Email: info@natstrust.com.au

www.natstrust.com.au

Message from the Chairman

I hope to welcome many of you to the 55th National Trust of Australia (Vic) Annual General Meeting at Barwon Park, Winchelsea on Saturday 19 November at 11am.

This AGM marks the mid-point in our *Strategic Plan* (2009–2013). Our choice of venues showcases the results of recent investments and echoes our commitment to the community in all areas of Victoria. Illustrating the progress made in the last three years putting the Trust onto a more sustainable footing.

In a year that has presented challenges due to the current economic climate; the Trust has completed and opened over 10 new projects or restorations. The Trust's *Annual Report 2010–2011* is available for download from our website www.natrust.com.au and contains details of some of our major achievements this year and our remaining challenges. I commend it to you.

I was honoured to open one completed project, Nehill Brothers Farm Living History Reserve, on 9 October with our Patron, Alex Chernov AO QC the Governor of Victoria. This project marks a significant milestone in the realisation of our vision for our farm properties and quest for strategic partnerships working with Australian Farm Animals Conservation Trust. Children from schools in the region have worked with the Trust to prepare rare breed illustrations for the sites interpretation programs. Hundreds of locals from the Camperdown region enjoyed the first Open Day on 30 October. If you are traveling to the west, Nehill is now signposted from the main highway between Colac and Camperdown. Why not stop for a picnic then visit nearby Cobden or climb our other local site Mt Sugarloaf and view Camperdown and the magnificent volcanic landscape of the area. I thank our supporters for the considerable effort undertaken to deliver this significant project in rural Victoria.

I have also recently been engaged on our members' behalf in ensuring that the Trust provides strong input into the review of a National Heritage Strategy. You can read our combined national submission online at www.natrust.com.au.



TRUST CHAIRMAN DR GRAEME BLACKMAN, FEDERAL MINISTER TONY BURKE, DARREN CHEESEMAN MEMBER FOR CORANGAMITE WITH SOME OF THE PLASTERERS WHO HAVE WORKED ON THE BARWON PARK RESTORATION.

I would encourage you to get out and enjoy our events and newly restored sites this summer. Revenue from the increasing number of visitors expands our other activities considerably so please take visiting friends and family to see what we have achieved this year and support our activities.

Dr Graeme L Blackman OAM
Chairman
National Trust of Australia (Vic)

Message from the CEO

2011 has witnessed the ongoing transformation of a number of our properties, including significant improvements to their amenities and facilities.

In spring we also celebrated the opening of two new sites; and the successful re-opening of Barwon Park for visitors and events, which is featured on our front cover. Barwon Park has seen major improvements in two years restoration and it is appropriate that it will host this year's Annual General Meeting on 19 November.

The mansion can now look forward to an exciting and event-laden 2012 thanks to the Federally-funded \$1.2M restoration of the roof, interior and addition of new visitor amenities. With the imminent completion of the garden restoration the mansion is ideally set to host weddings and functions and has already seen a surge in new bookings. We have also been strengthening our regional tourism linkages to take advantage of the faster access facilitated by the new Geelong bypass and connections to the Great Ocean Road.

Endeavour Fern Gully Nature Reserve at Red Hill is an example of a Trust property

rich in heritage which defies some peoples notion of a traditional Trust property – it has no buildings. It is now open for the first time thanks to considerable efforts by staff, the Mornington Peninsula Branch and its volunteers. They have been working tirelessly to raise funds, grow native seeds from the gully for replanting, and assisting the Trust in access and interpretation improvements. If you want to see the best tree ferns and some of the largest mature trees on the Peninsula visit this truly unique Trust reserve.

For some time now we have been engaged in a project to resolve some of the long term planning issues at Como House in South Yarra.

Members may not be aware that Como's operation is severely constrained by its

current permit. Only four external functions are allowed per annum for over 60 people, this means Como cannot operate sustainably without subsidy.

As a direct result it has been losing money for over 20 years.

The National Trust of Australia (Vic) has worked with its design team and consulted with statutory bodies and local residents, to seek a solution to this long term challenge. The proffered design concept includes a sympathetic new garden events pavilion and a design for a new car park which will retain all mature trees.

We would welcome your feedback on our designs which you can view on our website (www.comohouse.com.au) as part of our member consultation. We are committed to securing a more appropriate planning solution for this our most significant site.

Finally, as this will be the last edition of *Victorian News* for 2011, I would like to take this opportunity to thank all of our members and volunteers for your support over the past year, and wish you all a safe and happy upcoming holiday season.

Martin Purslow
CEO
The National Trust of Australia (Vic)



ENDEAVOR FERN GULLY

Food Miles to St Kilda: Two!

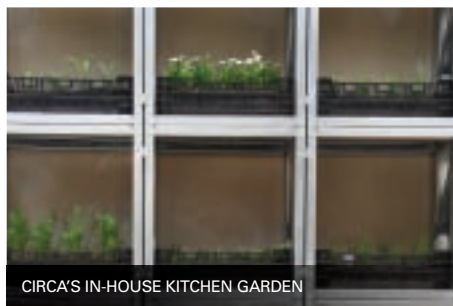
By Justin Buckley, Head Gardener, Rippon Lea House & Gardens

One of Melbourne's best restaurants has teamed up with one of its best gardens!

One of Melbourne's most celebrated fine dining restaurants, 'Circa.The Prince', has recently partnered with the National Trust's Rippon Lea gardens. A garden to plate to garden relationship has developed, with benefits for both the restaurant and the gardens. 'Circa' have leased a small area of Rippon Lea gardens adjacent to the orchard, in the old 'working' area of the garden, where their in house gardener, Regan Webb, has been busily growing various crops for the restaurant. The Rippon Lea produce supplements the restaurant's own garden, where large amounts are grown in banks of crates in the restaurant itself. The focus is on delicate micro herbs, flowers and baby vegetables such as radish and carrot, which are an important component in the presentation of their dishes. Even Borage flowers, overlooked by most of us, but with the most amazing blue hues, are carefully

harvested and used in dishes, or the occasional Martini!

The large amounts of green waste the kitchen produces are returned to Rippon Lea where they are composted by our garden staff, producing a high quality, organic fertiliser for use in the 14 acre grounds and in the veggie patch as well as back at the restaurant itself. In many busy kitchens this material is sent to land fill, so it is great to have it put to good use and for Rippon Lea's plants to reap the benefits. As people become increasingly conscious of issues such as food miles, two miles to the plate in Acland St, St Kilda is certainly hard to beat.



CIRCA'S IN-HOUSE KITCHEN GARDEN



CIRCA GARDENER REGAN WEBB AT THEIR RIPPON LEA GARDEN

2011 Delicious Food Heritage Award Winner

Following our partnership announcement (August 2011 edition of *Victorian News*) with Australian Farm Animals Conservation Trust on the Nehill Farm project, Fiona Chambers, Managing Director, was honoured as the recipient of the 2011 Delicious Food Heritage Award.

Trust CEO Martin Purslow says "This award is deserved recognition of Fiona's commitment the rare breed and confirmation of the quality of our new partnership".

The Produce Awards were announced at a spectacular gala event held at the Sydney Opera House.

"I can't think of anyone who has done more for rare breeds in Australia", said Alla Wolf-Tasker of winner Fiona Chambers, who farms Wessex Saddleback pigs, along with Shropshire sheep and Silver Grey Dorking poultry at Bullarto in Victoria's Daylesford-



Macedon region. Fiona's dedication extends well beyond her own farm gate, as she shares her knowledge with producers around the country.

Fiona and husband Nicholas were delighted to be medallists in the From the Paddock Produce Award category. "With more than 1,000 nominations we are overwhelmed to have had our Wessex Saddleback Chorizo selected to be amongst the best produce in the country" said Nicholas Chambers. "It acknowledges the merit of keeping heritage breeds alive, something we have worked



tirelessly to achieve over the past 16 years".

"We hope that this award will encourage others to keep and register rare breeds and join with us to conserve the diversity of our food" Says Fiona Chambers. "It's a good thing to do. It's about flavour and food security."

Stay tuned for more exciting news from Fiona, and the Trust.

For more information on Nehill farm please visit www.nattrust.com.au



Polly Woodside's learning in disguise

By Candice Bennett



POLLY WOODSIDE – A TALL SHIP STORY

When someone asks you “What do you do?” they don’t usually expect the answer “I work on the *Polly Woodside* – the big historical ship in the city.”

Even more so they don’t expect the next response when asked “What do you do there?”. Working at the *Polly Woodside* is an opportunity like no other – as facilitators we have the opportunity to dress up in period costume, get into character and take visitors back to the working life of a late Victorian cargo sailing ship.

The day begins by opening the ship – unlocking the hatches, checking the cabins. Then there are the sails...and watch for ‘Franny’ our resident sparrow in the rigging. It is an amazing feeling to watch the people scurry around the convention centre in suits, while we get to work in costume in the fresh



CANDICE, ONE OF OUR FACILITATORS WILL SHOW YOU THE ROPES

air. Working aboard a sailing ship right in the heart of Melbourne is a unique experience.

When you visit the *Polly Woodside*, you don’t get a stuffy tour guide wearing a blazer telling you a thousand facts and figures – you get to experience being one of the crew. The First mate will assign you a crew card, so you know your role on the ship, take you on board and ‘show you the ropes’. Visitors are taken on an adventure to discover life



“WE GET TO WORK IN COSTUME IN THE FRESH AIR, WORKING A SAILING SHIP RIGHT IN THE HEART OF MELBOURNE”

aboard the *Polly Woodside*. While most are not happy about the sleeping conditions, the food or the lack of sleep, we haven’t lost a crew member yet, and there are always laughs and giggles, especially when it comes to the ‘flush button at the heads.

Each day brings new surprises and when you work with the public no day is the same. It is a job like no other.

Reconciliation Action Plan

By Alexandra Hill

The National Trust of Australia (Vic) is committed to respecting the culture and heritage of the traditional owners of all significant heritage places across Victoria.

Support of this commitment was formalised in August with the signing of a Statement of Commitment by our Chairman Dr Graeme L Blackman OAM and CEO Martin Purslow. The acknowledgement of the importance of the reconciliation process to the National Trust, as a heritage advocate and custodian, also involves the development of a draft Reconciliation Action Plan (RAP).

The RAP program was launched in 2006 as an initiative to celebrate the 40th anniversary of the 1967 national referendum in which voters said "YES" to equality for Aboriginal and Torres Strait Islanders. RAPs are administered by Reconciliation Australia (RA), an independent, not-for-profit organisation that was established in 2000 by the former Council for Aboriginal Reconciliation. RA is the peak national organisation promoting reconciliation between Indigenous and non-Indigenous Australians.

In the 2010–11 Commonwealth funded Australian Council of National Trusts Partnership Program a program for accessible heritage was included. Under this program, the Council committed to developing a model RAP for all Trusts in Australia. Promoted by ourselves and National Trust Western Australia (NTWA), the initial work was successfully undertaken as a working pilot developed by NTWA.

A RAP is our public commitment towards reconciliation and outlines the way forward for engagement and acknowledgement of Aboriginal cultural heritage. A RAP is in a prescribed format and sets out how



reconciliation can advance our mission and strategic objectives. It formalises our contribution by encouraging us to identify clear actions and realistic targets. Developing a meaningful RAP takes time, but the final product is a short plan accompanied by a Statement of Commitment and an Implementation Program, with detailed actions and timelines.

An Aboriginal Advisory Committee will be established and involved at Board level to ensure a properly informed Aboriginal

perspective on our programs, projects and interpretation of properties and places. The implementation program will likely include development of Memorandum of Understanding between our regional Branches and their corresponding Registered Aboriginal Parties.

The next step is to meet and consult about our draft RAP and implementation program with Registered Aboriginal Parties and other interested groups. Our aim is to have our RAP approved by Reconciliation Australia in early 2012.



JAN BYRNE

Trust treasures

The National Trust cannot get by without its volunteers; they offer their expertise, time and passion to assist us with a myriad of different tasks at our many properties. We are indebted to all of our volunteers, and would like to thank you all for your tireless contributions to the Trust. Please see page 19 for details on our Christmas party.

We would like to take this opportunity to extend our appreciation to Jan Byrne for her tireless efforts and

unwavering dedication to Rippon Lea, particularly over the last 6 months. She has shared her extensive skills in floristry over countless hours to assist staff in creating successful events, going above and beyond her role as a customer service volunteer. Jan has also spent many hours over the winter months assisting our curatorial team in preparing Rippon Lea for opening in the summer. Thank you Jan for your support and enthusiasm over the last 5 years.



Melbourne's favourite French Festival, 'Paris to Provence', is back to ignite your senses!

Como House and Gardens will be home to this year's highly anticipated French festival, 'Paris to Provence'. In November Como transforms into an idyllic French village over a three day event where you will be able to smell, touch and taste all that embodies France.

Melbourne is the home to some of Australia's best food and wine. 'Paris to Provence' will reflect the very best that France has to offer in bistros, patisseries and restaurants. Last year the festival saw Shannon Bennett and his sensational Vue de Monde restaurant captivate attendees. This year will be no different with Philippe Mouchel, Pierrick Boyer, Jean Marc from Saucissons and Jerome Tremoulet from the Hotel Windsor presenting a range of delightful cooking demonstrations, sensational food tastings and book signings for those who pre purchase online.

Those who fancy something a little bit different will be able to participate in a range of presentations, from the highs and lows of the Tour de France to the origin of the modern Olympic Games and its French founder. You will also be able to hear the tale of the art of soufflé or learn about the bilingual French program at Camberwell Primary School. Come along on a visual tour through the French regions and how to acquire a slice of France with a French villa you have always dreamt of buying.

This is only a taste of what both 'Paris to Provence' founders Laura Rancie and Samantha Triaca has in store. They have a strong desire to showcase all that France has to offer, from the beauty, to the culture, food and fashion of France. This is something that has long represented something special to them and now they are sharing their love with the entire community.

For more information and to avoid the queues pre-paid tickets can be purchased through www.comohouse.com.au



SOME OF THE STALLS AT 'PARIS TO PROVENCE'.

Loved and Lost – the Battle for Melbourne

EMERGENCY FIGHT FOR BUILDING

THE NATIONAL TRUST yesterday launched an emergency campaign to stop the destruction of a historic city building.

Trust chairman, Mr. Rodney Davidson, said last night the building at 61 Spring Street would be "locked down" on Friday.

National Trust battles to save building

By DAVID WILSON

A 96-year-old building, the last remaining historic block at the Paris End of Collins Street, will be demolished later this week.

And the National Trust is making an 11th-hour bid to save it from the bulldozers.

allowed to go. Not only is it notable in itself, but it is an integral part of an important area of the city.

"The public has a right to see that it substantially stays that way," he said.

Col. Birch said "every

Chill shadows cast
by faceless towers
SIR, — I sincerely hope that the old building on the corner of Spring and Collins streets will be rescued from the bulldozers and preserved.

Black ban on square demolition

By VINCENT BASILE,
our Civic Affairs Reporter
Melbourne's beleaguered City Square project faces a major setback with an indefinite union black ban on demolition work on the site.

CLOCKWISE FROM TOP: SUN 15 NOV 1972; THE AGE 20 NOV 1972; THE AGE 15 NOV; THE AGE 15 NOV 1972

Take a journey through
Melbourne's changing
streetscape since the 1950s.

Loved and Lost is a new National Trust exhibition telling the stories of the battles fought for key buildings in the Melbourne CBD.

To be launched in the Tasma Gallery this month, the exhibition will then embark on a touring schedule taking it to sites around the CBD, including the Atrium at Federation Square, and to regional and interstate locations.

There have been major wins and significant losses of important buildings across our city

and state. Extensive records have been kept of these activities that span more than half a century, and the Trust can now share these memories with the people of Melbourne and Victoria.

A fascinating exhibition of historic photographs and documents, focusing on the Melbourne CBD, has been compiled over the past year from the National Trust archives, featuring images of buildings which once stood tall in the central city and also those which were saved from demolition. The exhibition weaves a story of struggle between the forces of 'progress' and the community, a struggle that can rightly be called the 'Battle for Melbourne'.

The exhibition explains the origins of the

National Trust and the heritage advocacy movement in Victoria against the backdrop of the loss of so many Victorian buildings. A simultaneous relaxing of height restrictions, post-war commercial building activity and a zeal for modernism exposed the CBD to remarkable challenges. The Trust emerged as part of a larger community groundswell to preserve those aspects of the city's heritage held dear to Melbournians. *Loved and Lost* examines the controversies, rallies, editorials, letters and public protests that saved the Regent Theatre, Flinders Street Station, 1-9 Collins Street and Tasma Terrace. It also looks at what we have lost and is irreplaceable.

Latest details at www.natstrust.com.au/exhibitions



Advocacy Update

For all the latest news please visit www.nattrust.com.au/advocacy/ or join our facebook group: National Trust of Australia (Vic) Advocacy.

Draft World Heritage Management Plan

The Royal Exhibition Building and Carlton Gardens were inscribed on the United Nations Educational, Scientific and Cultural Organisation (UNESCO) World Heritage List on 1 July 2004. The *Heritage Act* (Vic) provides for the preparation of a World Heritage Management Plan for listed places. A Steering Committee appointed by the Minister for Planning has responsibility for preparing the plan. The Trust made a submission to the Committee in September.

Major issues identified in the management arrangements are the sharing of responsibility and accountability between the Australian and Victorian governments and City of Melbourne and Yarra councils. This includes both funding for capital expenditure and ongoing care and maintenance. We submit that all plans and reporting should be integrated between all governments and councils involved.

The Hub redevelopment, 70–74 Nicholson Street, Fitzroy

This redevelopment, located adjacent to Royal Terrace and directly opposite the World Heritage listed Royal Exhibition Building, seeks to redevelop the boarding housing into 51 apartments. The subject property was originally three 1850s townhouses, later combined by a 1920s façade.

The City of Yarra is now appealing to VCAT to amend the conditions imposed by an earlier VCAT determination and to enforce a restoration of the façade to its earlier 1850s appearance. This is being resisted by the developer. A key moment in the heritage planning of the World Heritage Environs Area, and we are supporting Council by appearing jointly with the Fitzroy Residents Association and providing expert witnesses. The hearing is scheduled for October.

Melbourne Planning Scheme Amendment C186

As we reported in the August edition of *Victorian News*, the study of 99 additional CBD places, including 12 building interiors, has been recommended for inclusion in the Melbourne Planning Scheme Heritage Overlay. Planning Scheme Amendment C186 has been prepared and exhibited for public comment. We have prepared a detailed submission to support protection of these places by the overlay.

HMVS Cerberus, Black Rock

The Trust holds, on behalf of the Friends of the Cerberus, the \$500 000 grant from the Federal Government's National Heritage Investment Initiative for conserving HMVS Cerberus. Following many months of negotiation with the Friends, Heritage Victoria and the Historic Heritage Branch in Canberra, the funding agreement has been renegotiated to allow for a digital survey and for design work to brace the gun turrets. A 3D scan of Cerberus above the waterline was undertaken in July. The scan provides the first comprehensive digital record of the vessel and will allow for high-end web-based interpretation. Design work for physical works to prevent collapse of the turrets through the deck has commenced.



CERBERUS 3D SPATIAL JULY 2011

Abbotsford Convent, Collingwood

Following refusal by Heritage Victoria in May of the Sophia Mundi Steiner School application to build classrooms on the Convent Paddock, in July the school lodged a second application to Heritage Victoria for new classrooms to be sited within the existing school boundary. Whilst there is a notional new building drawn on the Master Plan, the Plan also stresses that the ... *'primary aim is to conserve the existing buildings. The programme of works is directed towards repair and adaptive re-use of the existing fabric. In order to adapt the buildings to the requirements of prospective tenants a number of limited interventions are anticipated.'*

The proposed fencing off of further land for a playground for a private school for the duration of their 20 year lease is an erosion of the concept of public access to the place. The City of Yarra has also objected to the proposal.

Brenan Hall (Hall of Science), Victoria Parade, Melbourne

We reported in *Trust News* in February 2011 our classification of the former Hall of Science in Victoria Parade. The hall was built in 1889 as a meeting place by the Australasian Secular Association, to



ABBOTSFORD CONVENT

support the philosophical ideas of the Freethought movement. The movement believed that opinions should be formed on the basis of science, logic and reason, rather than authority, tradition or dogma, and the institution of the Church. Ironically the building is now owned by the Catholic-owned St Vincent's Hospital. Heritage Victoria recommended the Hall for inclusion in the Heritage Register. A Registration Hearing to determine the matter was held in September and we await the determination.

Highett Grassy Woodland

Together with Friends of Highett Grassy Woodland we are advocating for the preservation of an environmentally and historically significant area of land, known as the Highett Grassy Woodland. The Highett Grassy Woodland is a 3 hectare section of a 9.3 hectare CSIRO site in Highett. The entire CSIRO site is in the process of being sold through a Federal Government process. After the sale, the land will ultimately fall under the jurisdiction of Victorian state and local planning controls, and will ultimately be threatened by medium-to-high density housing development.

In 2004, a flora and fauna assessment conducted by the CSIRO and Bayside City Council found the site to have local and regional biodiversity significance, including regionally rare Yellow Box eucalypts – an unusual occurrence of the species in grassy woodland in southern Victoria, where all grassy woodland is endangered. Also present are large and significant River Red Gum trees, and seven recorded flora species that are rare within the Gippsland Plain bioregion.



BRENNAN HALL MAY 2011 NATIONAL TRUST

Heritage Festival 2012: *Innovation & Invention*

With the success of this year's Heritage Festival *Steam to Surf* and participation of over 45 000 people, next year's festival, 21 April – 20 May 2012, is set to be a nationwide event for the first time.

Facilitating our approach of creating a strong statewide representation of events, we are also developing an iPhone App for the festival. This will enable events to be sorted based on location, date or type of event and allow users an easy way to plan their participation in the Festival. The printed program will be arriving with your next edition of *Trust News* however, events can still be registered through our website for

inclusion in the App and online up until April. We encourage all our members to sign up for Festival eNews through the Heritage Festival webpage, enabling you to select the type and region of events that you may be particularly interested in.

In 2012 our Branches will again form a strong basis for events, supported by



independent heritage organisations, groups and councils across Victoria. Building on the success of our heritage awards program in 2011, the Trust will additionally be involved with a greater number of councils in 2012, including the City of Bendigo, celebrating outstanding heritage outcomes in the local community.
www.nattrust.com.au

Unloved!

Pubs form an important part of our socio-cultural history and identity, making their abandonment even more profound.

In early 2012, we will be curating an exhibition of historic pubs around Victoria that have been registered by the National Trust since 1956 – but subsequently have been demolished, re-used unsympathetically or are simply unloved and looking for a loving owner.

The National Trust has classified 176 hotels and pubs (21 in Melbourne CBD & inner suburbs. Approximately 70 of these are still in use as a hotel and 100 are not in use as hotels/pubs. Of the 100, 30 have been demolished and 70 have alternative uses.

If you can answer an emphatic NO to these questions, you are probably dealing with an unloved building or place.

Are you in the hand of a loving owner?

Are you in sympathetic use?

Do you look cared for?

Do you have a conservation management plan?

Have you been in use in the last 3 years?

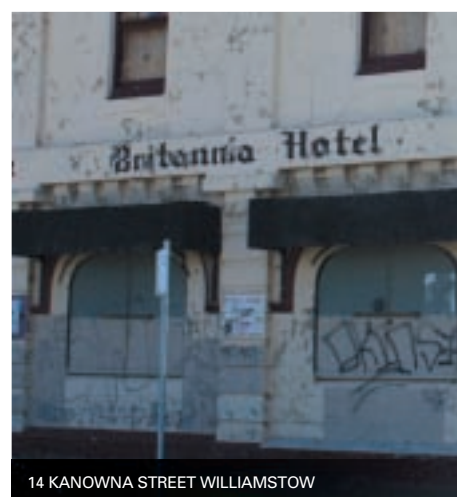
Do you have a restoration permit?

The National Trust is looking for any

heritage places but particularly hotels and pubs that are neglected, abandoned, forlorn or orphaned, to form a snapshot of unloved heritage places across the state. These places have been loved before and can be loved again.

If you have an unloved building in your community, please send us an image and description to and we will consider including it in our quest to bring love to our jilted and estranged heritage pubs and places.

www.nattrust.com.au/advocacy/campaigns/



14 KANOWNA STREET WILLIAMSTOWN



BRITISH HOTEL CRESWICK AUGUST 2011

“I blame the Trust”

During this year's *Steam to Surf* Heritage Festival, Rachel Buckley was inspired to buy a 1860s hotel in Dunolly, Central Goldfields.

Rachel is 'blogging' her experiences on our website – here is an extract from Rachel's August blog:

“How suddenly one's life can change! One moment I am a mild-mannered widow from Alphington, next I am about to be the owner of a heritage building. I gleefully place all the blame with the National Trust – an organisation that transformed my vivid imagination into a reality. If I hadn't been on the tourist trail of the National Trust Heritage Festival *Steam to Surf* 2011, I would not have seen the property for sale. My life will soon be very different.

I have purchased a 150 year old former hotel in Dunolly and will move at the end of August. I leave Melbourne to embark on a whole new life in the Central Goldfields town of Dunolly. It couldn't be more of a change from a traditional 1927 Californian bungalow to a double-storey 1863 hotel. I was told I should *downsize* at my age, but a five-bedroom, triple- brick hotel with ballroom and cellar could hardly be called *downsizing*.

The Junction Hotel was run by Ann Wigham in 1863 to serve the gold miners. It stands proudly and confidently on the Maryborough Road leading to Dunolly. I pulled over and

stopped the car at the approach – it was love at first sight. I resolved there and then to buy it – even if I was reduced to penury for the rest of my life. Although some friends have been quick to point out the hazards of such an impulsive buy, I have no doubt or qualms at all. I am blissfully confident – or should that be blissfully ignorant? The doubters

“The first thing I did was to engage Archicentre to give the Hotel an inspection. I am a great believer in getting the experts and I would recommend everyone to invest in this for security and peace of mind.”

have visions of me huddled up in one cold lonely room – like a tragic Miss Havisham of Charles Dickens. *Au contraire*, say !! I see the future filled with music and the dulcet tones of opera singers at my candlelight suppers – more like Hyacinth Bucket than Miss Havisham.

I could move in just as it is, but to preserve the property we do need to tackle things in order of priority. Thank goodness, Vincent is



RACHEL WITH HER FIRST RADIO INTERVIEW

going to be my consultant architect and help me through this. It is still a daunting venture. The property has stood for 150 years and will last another 150 years, but it does need damp course treatment to stop rising salt damage. The property is on the flood prone area of Burnt Creek. It requires improved drainage, new slow combustion fire places, guttering, roof repairs, insulation and a bund wall to reduce water runoff from the road – I could go on, but it is a long list.”

By Rachel Buckley, formerly of Alphington, Melbourne

Follow Rachel's blog at www.natstrust.com.au/heritage_festival



MAIN PICTURE: RACHEL'S PLACE INSET: FORMER HOTEL IN DUNOLLY



Miss Fisher's Murder Mysteries

The National Trust and Every Cloud Productions are offering an unforgettable opportunity for one of our readers and their guest to visit filming of the new television drama series *Miss Fisher's Murder Mysteries*.

Starring Essie Davis (*Cloudstreet*, *The Slap*), Nathan Page (*Underbelly*, *All Saints*), Miriam Margolyes (*Babe*, *Harry Potter*) and Hugo Johnstone-Burt (*Cloudstreet*) and based on author Kerry Greenwood's best-selling Phryne Fisher novels, the television series is being produced by Every Cloud's Fiona Eagger and Deb Cox. The production has been filming at several of our magnificent National Trust properties over recent months and we can't wait to see them featured in the series when it goes to air on ABC TV in early 2012. Our lucky winner and their guest will get to visit the set of *Miss Fisher's Murder Mysteries* on a suitable day late November or early December.

The star of the series is lady sleuth, Phryne (pronounced Fry-knee) Fisher, sashays through the back lanes and jazz clubs of late 1920's Melbourne, fighting injustice with her pearl handled pistol and her dagger sharp wit. But behind the façade of elegance and charm are the scars of the past which drive Phryne to find justice for those who can't help themselves and to pursue the truth of her own dark history.

For your chance to win this incredible prize, in a 100 words or less, *What mystery would you like to solve?* Send all entries to reception@natrust.com.au with the subject 'Miss Fisher's Murder Mysteries'.



RIPPON LEA IS ONE OF THE PROPERTIES FEATURED.



Pages from the Past

The Casey Cardinia Branch is launching a new book, 'Pages from the Past', that will highlight the fascinating history of the people, places and public life that have helped to shape Casey and Cardinia. This area has experienced extremely rapid development over the years, with many new housing estates, yet many people are

unaware of the rich history and the heritage of the area. This book will appeal to residents and anyone with an interest in local history.

'Pages from the Past' will be launched in November 2011. To purchase, contact the Trust Gift Shop at 'Pioneers Park' Berwick: 9769 5653 or 9707 1518.

WANTED – your designer clothes!

A successful initiative sees the Trust Collections Team turn used designer clothing into conservation cash and we need your help!

The 'Retro Clothing' sale originally held one autumn weekend in March has proved so wildly successful that it has outgrown the garage where it all started and will now be held at Como House & Garden. Organised entirely by volunteers, it features stunning, late 20th century designer outfits and accessories that have all been donated. This unusual sale has raised a profit of more than \$20,000 for the Trust – a wonderful result. It is down to the tireless work of the Collections volunteers who were responsible for developing and then implementing the project.

The proceeds of the sale will be put towards the conservation and display of garments in the Trust's extensive Costume Collection. We have discovered that there is a real demand and many potential buyers for quality second hand clothes and accessories from all eras.

The Collections Team wishes to repeat its success at a further 'retro sale' in March 2012. To do this they need your donations!

All proceeds of these clothing sales will be used to preserve the Trust's Costume Collection. If you have any suitable fashion items such as vintage clothes, hats, gloves, belts, handbags, scarves, designer labels, please phone either Libby on 03 9819 4831, or Nance on 03 9882 6405.



'RETRO CLOTHING' IS A HUGE SUCCESS



WE NEED YOUR HELP. DONATE!

Piano Marathon

Rippon Lea House & Gardens is proud to host the Glenfern Team of Pianist Piano Marathon on Australia Day in 2012.

Join us in the beautiful ballroom at Rippon Lea and enjoy performances by students from the own Glen Fern Piano Institute, wander the picturesque gardens of the estate or take in the history of the stunning Victorian mansion.

For more information please contact Rippon Lea House & Gardens on 03 9523 6095 or visit www.riponleaestate.com.au



Upcoming Events

NOVEMBER 2011
– JANUARY 2012

Kick start your summer with one of the many events at one of the Trusts properties.

Visit www.nattrust.com.au/events for new events and additional information on events listed below. Entry fees apply for Trust members for special fundraising events at Trust properties. 'Members' prices listed are for Trust members only and some events require pre-bookings.

Please note: The event details below are correct at time of printing, but are subject to change. To confirm information, the Trust recommends, phoning properties or visiting www.nattrust.com.au, before purchasing tickets or attending the events.

National Trust Property Events

BARWON GRANGE

25 Fernleigh Street Newtown 3220

Colonial Christmas

WHEN: November 2011 – January 2012

Join in the festive spirit with Barwon Grange as it celebrates a Colonial Christmas from the Victorian era. Christmas-themed displays by the Geelong Artisans Group will showcase lace-making, porcelain painting, embroidery, quilting, textiles and beaded crafts

CONTACT 03 5221 3906

barwon.grange@nattrust.com.au

BOOKINGS not required

COMO HISTORIC HOUSE AND GARDEN

Corner Williams Road and Lechlade Avenue,
South Yarra (Melway: 58 G2)

Paris to Provence: Melbourne's French Festival

WHEN: Friday 25 November – Sunday 27
November, 2011

TIME: Friday: 4pm – 9pm
Saturday: 10am – 6pm
Sunday: 10am – 4pm

Como House and Garden will be home to this year's highly anticipated French festival, Paris to Provence. A delightful event where you will be able to smell, touch and taste all that embodies France. This year Paris to Provence will take place over three enchanting days, with live music and food that'll excite your taste buds as you wonder amongst the pretty white marquees.

CONTACT Paris to Provence,
Laura 0410 662 465 or Samantha 0430 152 999
paristoprovence@gmail.com

BOOKINGS recommended
Pre-bookings can be made through
www.paristoprovence.com.au or
www.comohouse.com.au



LABASSA

2 Manor Grove, North Caulfield
(Melway: 58 H11)

100 Years Anniversary – J. B Watson 1811–1911

WHEN: Sunday 21 November, 2011

TIME: 10.30am – 4.30pm

COST: Adult \$8, Concession/Children \$5.50,
Family \$20

Celebrating the life of J B Watson II and the Labassa years as the last of the three significant owners, 1904–1911.

CONTACT 03 9527 6295

BOOKINGS not required

Adelphi Players Theatre Company presents the Annual Christmas Pantomime, 'Jack & Jill'

WHEN: Saturday 3 December
Sunday 4 December
Saturday 10 December
Sunday 11 December, 2011

TIME: 2pm & 4.15pm – Approx. 1.5 hour
show

COST: General: Adult \$10, Concession \$8
Member: Adult \$8

The much loved pantomime of Jack & Jill; a glorious, captivating fairy tale.

CONTACT 03 9527 6295

BOOKINGS Barbara 03 9690 1593

Open Day

WHEN: Sunday 15 January 2012

TIME: 10.30am – 4.30pm

COST: Adult \$8, Concession/Child \$5.50,
Family \$20, Members Free

Internal tours of the opulent interiors External
tour of architectural features (1pm). Self guided
tours also available. Tours of the house at 11am
and 2pm

External tour at 12.30pm

Tea Rooms operate throughout the day

CONTACT 03 9527 6295 or 03 9509 6596 for
further information. No bookings required

Open Day

Aesthetic Influences in Ceramics, Furniture and Interior Design

WHEN: Sunday 19 February 2012

TIME: 10.30am – 4.30pm

COST: Adult \$8, Concession/Child \$5.50,
Family \$20, Members Free

An eclectic collection of ceramics from a private
collector, viewed amongst ebonised furniture,
embossed wallpapers and tiles within Labassa,
and all influenced by the Aesthetic Movement
Tours of the house at 11am and 2pm

External tour at 12.30pm

Tea Rooms operate throughout the day

CONTACT 03 9527 6295 or 03 9509 6596 for
further information. No bookings required

LA TROBE'S COTTAGE

Cnr Birdwood Avenue & Dallas Brooks Drive,
Melbourne (Melway: 2L A1)

Open House at La Trobe's Cottage

WHEN: Every Sunday during October to May
Last Sunday of the month during June
to September

TIME: 2.00pm – 4.00pm

COST: adult \$5, concession \$3, child \$3,
family \$10 Members (NT, La Trobe
Society, Friends of La Trobe's Cottage):
Free

Tours will focus on Charles Joseph La Trobe as
the visionary administrator of the Port Phillip
District in the early years of the settlement
of Melbourne and will provide a fascinating

glimpse into family life at his "Jolimont" estate, with his wife Sophie and their children.

CONTACT 03 9656 9800
BOOKINGS not required

The Western District – in the Footsteps of La Trobe

WHEN: Friday 18 November – Sunday 20 November, 2011
TIME: 6pm (for Friday evening reception)
VENUE: Hamilton and surrounding districts, venue address advised on booking confirmation

Join a weekend tour of the Western District, to which Charles La Trobe made many long journeys on horseback with his sketchbook in hand. Hamilton will be the base for this weekend as we visit properties and landmarks he knew in the 1840s.

CONTACT Dianne Reilly 03 9646 2112
BOOKINGS ESSENTIAL

MCCRAE HOMESTEAD

11 Beverley Road, McCrae (Melway: 159 A10)

Celebrating the Life of Robbie Burns

WHEN: Saturday 21 January, 2012
TIME: 7.30pm – 9.30pm
COST: General: Adult \$25, Concession \$23, Family \$50
Member: Adult \$23, Family \$45

Enjoy a night tour of McCrae Homestead, and then partake in a traditional Burns night supper, with the Piping in of the Haggis.

CONTACT Sharon 03 5981 2866 or 0407 090 794
BOOKINGS ESSENTIAL by Monday 9 January, 2012

MULBERRY HILL

385 Gulf Links Road, Langwarrin South (Melway: 107 C2)

Enjoying St. Valentine's Day

WHEN: Saturday 11 February, 2012
Tour the home of Daryl and Joan Lindsay and see where Joan wrote her famous book "Picnic at Hanging Rock." Bring a picnic to enjoy after the tour while you watch a film of Joan's wonderful book.
CONTACT Sharon or Heather 03 5971 4138
BOOKINGS not required

Mothers Day

WHEN: Sunday 14 May, 2012
TIME: 12pm - 4.30pm
COST: Adult \$15, Concession \$14
Treat your mum to a wonderful day at Mulberry Hill. Take a tour of the Lindsay's beautiful home and afterwards, relax in the courtyard for Devonshire tea.
CONTACT Sharon 03 5971 4138 or 0407 090 794
BOOKINGS ESSENTIAL by Friday 3 February, 2012



POLLY WOODSIDE

2A Clarendon Street, South Wharf (Melway: 2E K9)

Polly Woodside 126th Birthday Celebration

WHEN: Sunday 6 November, 2011
TIME: 10am – 4pm
COST: General: Adult \$15, Concession \$12, Child \$8, Family \$42
Member: Adult \$10, Concession \$8, Child \$5, Family \$30

Step aboard and come celebrate *Polly Woodside's* 126th Birthday! Join us for a day filled with high seas action, roving performers, face painting, arts and crafts, maritime activities and of course swashbuckling pirate adventure!

CONTACT 03 9699 9760, www.pollywoodside.com.au
BOOKINGS ESSENTIAL by Friday 4 November, 2011
For bookings contact National Trust (Vic) Bookings Office, 03 8663 7260 or email bookings@nattrust.com.au

Pirate Days

WHEN: First Sunday of the Month
TIME: 10:00am – 4:00pm
COST: Adult \$15, child \$8, concession \$12, family \$42
Members: free

X marks the spot at *Polly Woodside* on the first Sunday of each month. Dress as a pirate and head to *Polly Woodside* to search for elusive buried treasure, walk the plank, join in pirate arts and crafts and have your face painted.

CONTACT 03 9699 9760;
www.pollywoodside.com.au

Story Time

WHEN: Every Tuesday
TIME: 11.00am – 12.00pm
COST: Adult \$15, child \$8, concession \$12, family \$42
Members: free

Fun and interactive storytelling with a wide variety of stories, songs and activities. Stories are read on the deck of *Polly Woodside* or, in inclement weather, down below!

CONTACT 03 9699 9760;
www.pollywoodside.com.au

PORTARLINGTON MILL

7 Turner Court, Portarlington (Melway: 239 E2)

U3A Art Show

WHEN: Saturday and Sundays in November, 2011
TIME: 12pm – 4pm
COST: General: Adult \$4, Concession \$3, Child \$2, Family \$10
Member: Free

Display of art by local senior painters.

CONTACT Andrew Mason 0408 172 770
BOOKINGS not required

10th Annual Attitudes Art Show

WHEN: Saturday and Sundays in December, 2011 and January, 2012
TIME: 12pm – 4pm
COST: General: Adult \$4, Concession \$3, Child \$2, Family \$10
Member: free

Exhibition and sale of art by local talented painters.

CONTACT Andrew Mason 0408 172 770
BOOKINGS not required

19TH CENTURY PORTABLE IRON HOUSES

399 Coventry Street, South Melbourne (Melway: 2J K2)

Open Day

WHEN: first Sunday of each month (except January)
TIME: 1.00pm – 4.00pm
COST: adult \$5, concession \$3, child \$3, family \$10
Members: free

Opportunity to explore the three portable iron houses on site, which are among the few pre-fabricated iron buildings remaining in the World.

CONTACT Pauline Reid 03 9645 7517
BOOKINGS essential

Lanes and Byways – guided history walk

WHEN: Sunday 20 November, 2011
TIME: 1.45pm – 3.45pm
COST: General: Adult \$20, Concession \$18, Child \$10
Member: Adult \$15, Child \$5

A guided 1.5 hour walk exploring the bluestone lanes of South Melbourne.

CONTACT Pauline Reid 03 9645 7517
BOOKINGS ESSENTIAL

Private Guided Walks

WHEN: Third Sunday of each month
Volunteers run private guided walks or lunches with a speaker once a month.

CONTACT 03 9699 2172 or 03 9645 7517
BOOKINGS ESSENTIAL



Upcoming Events (continued)

RIPPON LEA HOUSE AND GARDENS

192 Hotham Street, Elsternwick (Melway: 67 F2)

Christmas Carols

WHEN: Monday 5 December, 2011
TIME: 5.30pm – 8.30pm
COST: General: Adult \$12, Concession \$9, Children \$6.50, Family \$30
Member: Free

This year Rippon Lea House and Gardens hosts a special Christmas Carols event. Enjoy a twilight picnic and listen to choirs sing a selection of carols. Santa will be making a special appearance, in addition to boat rides on the lake and Open House tours of the Mansion.

Property is open 10am – 5pm. Gates to open at 5.15pm and close at 9pm.

CONTACT Sherredan Nuthall 03 9523 6095
TICKETS available at the door

Storytime

WHEN: Every Thursday from November 2011 to April 2011

TIME: 11am – 12pm

COST: Parents \$7, Child over 3 years \$3

Fun and interactive storytelling with a wide variety of stories/songs and activities for the little ones aged between 3 and 7 years (approx). Stories are read outdoors in the gardens under the magic storytime tree.

Contact: 03 9523 6095 or visit www.nattrust.com.au

Lunching and Listening Fourth Thursday Luncheons

WHEN: Thursday 24 November 2011

TIME: 12pm – 2pm

COST: \$20 per person

Behind the Scenes in Event Management.

Jan Bottcher has worked as marketing / major events promotions coordinator for a number of organisations she currently operates a consultancy service providing marketing, publishing, photographic and publicity services and event project management.

CONTACT Lynette Dobson 03 9555 8382

Summer Sessions 2010

WHEN: Every Sunday from January through to March (Except 1 January and 26 February, 2012)

TIME: 12pm – 4pm

COST: Adult \$7, Concession \$5, Child \$3, Family \$16

Children's art and craft activities i.e. face painting, bead decorations, badge making, tug o wars, handball target.

Live music and entertainment. Bring a picnic, a blanket and stake out a place under the windmill. Be entertained with live music,

or play a spot of croquet. The kids can be entertained with supervised activities, crafts and games.

Contact: 03 9523 6095 or visit www.nattrust.com.au

Purchase tickets at the gate, no need to pre-book.

Any Other Details: All parking strictly off site. Bring along a picnic to enjoy and a picnic rug.

Annual Teddy Bears Picnic

WHEN: Sunday 26 February, 2011

TIME: 10am – 4pm

BOOKINGS recommended. Tickets can be pre-purchased online, or at the front gate on the day of the event.

Join Ripplea Bear in celebrating his 22nd Birthday! Bring along a picnic, a rug and your favorite teddy bear. Kids and adults can enjoy games, activities and live entertainment.

Limited parking is available offsite. Public Transport is easily accessible

Contact: 03 9523 6095 or visit www.ripponleaestate.com.au



OLD MELBOURNE GAOL

377 Russell St, Melbourne

'Roast lamb, peas & a bottle of claret – such is life'

WHEN: Thursday 10 November 2011

TIME: 6.30pm – 9pm

COST: \$130 – includes a three course dinner

On the 131st anniversary of Ned's last night in the Gaol commemorate his last meal with a unique dinner and 'Such a life' performance at the Old Melbourne Gaol

BOOKINGS ESSENTIAL

Contact 03 8663 7228 or www.oldmelbournegaol.com.au/events for more information and online bookings.

Ghost Seekers

WHEN: Once a month on Saturdays, please check the website for more details

TIME: During daylight saving 10.30pm – 3.30am, non day light saving 9.30pm – 2.30am

COST: Single \$140, Double \$220

The Ghostseekers team conduct paranormal investigations in the Old Melbourne Gaol.

BOOKINGS ESSENTIAL

Contact 03 8663 7228 or www.oldmelbournegaol.com.au for more information and online bookings.

Ghosts, What Ghosts? – Night Tour

WHEN: NEW week night program

TIME: During daylight saving 8.30pm – 10pm, non day light saving 7.30pm – 9pm

COST: Adult \$35, Concession / NT member \$30 (not recommended for children under 12 yrs of age)

This Gaol is a grim place. It has a dark history. Stories abound of an unexplainable presence. Over many years, these stories come from visitors and staff alike. None have been proved. Many are compelling.... 'GHOSTS...WHAT GHOSTS?'

BOOKINGS ESSENTIAL

Contact 03 8663 7228 or www.oldmelbournegaol.com.au/events for more information and online bookings.

Summer Holidays at OMG Crime & Justice Experience

WHEN: Summer Holidays 2012

TIME: 9.30am – 5pm Daily (Closed Christmas Day)

COST: General Admission: Adult \$22, Concession \$18, Child (5–15yrs) \$12, NT member FREE

Along with the general program of the Gaol, come and explore the old magistrates court. Play a role as one of 10 characters or watch as part of the public gallery as the scripted courtroom drama unfolds. Visit www.oldmelbournegaol.com.au for up to date information on all holiday programs.'

BOOKINGS not required

Contact 03 8663 7228 or www.oldmelbournegaol.com.au/events for more information.

'Such a Life' performance at OMG C&JE

WHEN: Weekends and School Holidays

TIME: 9.30am – 5pm Daily (Closed Christmas Day)

COST: General Admission: Adult \$22, Concession \$18, Child (5–15yrs) \$12, NT member FREE

Witness this powerful performance that takes you inside the life and legend of Ned Kelly.

BOOKINGS not required

Contact 03 8663 7228 or
www.oldmelbournegaol.com.au/events
for more information

Hangman's Night Tour

WHEN: most Monday, Wednesday, Friday and Saturday nights
TIME: During daylight savings 8.30pm – 10.00pm, non day light savings 7.30pm – 9.00pm
COST: Adult \$35, Concession / NT member \$30 (not recommended for children under 12 yrs of age)

What stories would a hangman tell you if he was guiding you around the Gaol, where he was the master of the rope?

What other stories from the dark side will find their way into this performance?

Book the Hangman's Night Tour and find out..... if you're game?

BOOKINGS ESSENTIAL

Contact 03 8663 7228 or
www.oldmelbournegaol.com.au/events
for more information and online bookings.

Branch Events

ACTIVITIES COMMITTEE NATIONAL TRUST OF AUSTRALIA (VIC)

High Tea

WHEN: Tuesday 8 November, 2011
TIME: 3.30pm – 5pm
COST: General: Adult \$37
Member: Adult \$32
VENUE: Ridgeway Place, Melbourne,
venue address advised on booking
confirmation

High Tea at an exclusive ladies club. Enjoy chamber music and a traditional afternoon tea accompanied by a glass of bubbly or fruit cup.

CONTACT Lesley Barnes 03 9735 5772
BOOKINGS ESSENTIAL

Send booking form with cheque or credit card details and stamped, self addressed envelope to Lesley Barnes, 21 Winnetka Drive, Lilydale, 3140

Blue Lotus Watergarden

WHEN: Sunday 5 February, 2012
TIME: 11.15am for 11.30am start
COST: General: Adult \$35, Child \$29
Member: Adult \$30
VENUE: Blue Lotus Watergarden, Warburton Highway (Melway 288 H8).
Map provided on booking

A tour and talk has been arranged to fully appreciate this magical place. Wheelchair friendly, this self drive event is ideal for everyone to enjoy. Luncheon included in cost.

CONTACT Lesley Barnes 03 9735 5772
BOOKINGS ESSENTIAL by Friday 27 January, 2012

Send booking form with cheque or credit card details and stamped, self addressed Envelope to Lesley Barnes, 21 Winnetka Drive, Lilydale, 3140

CASEY CARDINIA BRANCH

Showcase Morning tea

WHEN: Monday 7 November, 2011
TIME: 10am – 12pm
COST: Bring a plate
VENUE: Heritage Centre and Trust Gift Shop,
2 Peel Street, "Pioneers Park" Berwick

Members, volunteers and friends are invited to enjoy morning tea with Branch members in the function room. Bring along any item of heritage interest and share its story with the group. This month's theme is "Treasures from Childhood."

CONTACT Ruth Crofts 03 9707 1518
BOOKINGS ESSENTIAL by Friday 4 November, 2011

Branch Annual General Meeting

WHEN: Monday 21 November, 2011
TIME: 7.30pm for 8pm start
VENUE: Heritage Centre and Trust Gift Shop,
2 Peel Street, "Pioneers Park" Berwick

The annual general meeting for 2011. Nomination forms for the Branch Committee are available from the Secretary, phone 03 9707 1518. Following the meeting our guest speaker, Pam Sweeting a local historian, will give an interesting talk about the early "German Settlers in Casey."

CONTACT Ruth Crofts 03 9707 1518
BOOKINGS ESSENTIAL for catering purposes

GEELONG & REGION BRANCH

Christmas Celebration and last meeting for 2011

WHEN: Tuesday 6 December, 2011
TIME: 12pm for 12.30pm start – 3pm
COST: Adult \$25
VENUE: The Heights, 140 Aphrasia Street,
Newton, Geelong (Melway: 451 E4)

Christmas lunch for Geelong & Region Branch. Show and tell your favourite Christmas memory. After lunch there will be a branch meeting.

CONTACT Margaret Tembo 03 5221 5130
BOOKINGS ESSENTIAL by Thursday 1 December, 2011 along with payment for lunch

MACEDON RANGES BRANCH

Chinese Museum Tour & China Town Guided Tour

WHEN: Sunday 27 November, 2011
TIME: 11am – 1pm
COST: General: Adult \$20
Member: Adult \$15
VENUE: China Town CBD, 22 Cohen Place,
Melbourne. Off Little Bourke Street at rear of Her Majestys Theatre

A conducted tour of the Melbourne Chinese Museum and parts of China Town. After the tour join the organizing committee for an optional Yum Cha lunch at your own expense. Please advise on booking if you will be attending lunch.

CONTACT Phyllis Boyd 03 5428 1584 or 0417 059 476
BOOKINGS ESSENTIAL by Monday 21 November, 2011

MORNINGTON PENINSULA BRANCH

Private Garden Viewing Mt Martha

WHEN: Sunday 20 November, 2011
TIME: 2pm – 4pm
COST: General: Adult \$15, Concession \$12
Member: Adult \$10
VENUE: Private Garden Mt Martha, venue address advised on booking confirmation

Balcombe family descendant will open the garden for Trust members and friends. Includes afternoon tea. Trading table offering items for sale with proceeds going towards the restoration of 100 year old hand-painted doors in the Edwardian Room at The Briars.

CONTACT Adrienne 03 5976 1538 or
Judy 03 5988 9853
BOOKINGS ESSENTIAL by Friday 18 November, 2011

Branch Annual General Meeting

WHEN: Saturday 26 November, 2011
TIME: 11am
COST: Free
VENUE: President's Garden Blairgowrie,
venue address advised on booking
confirmation

President's Report and Election of Office Bearers for 2012, followed by refreshments and garden viewing.

CONTACT Adrienne 03 5976 1538 or
Judy 03 5988 9853
BOOKINGS ESSENTIAL by Friday 25 November, 2011

NORTH EAST WOMEN'S AUXILIARY

Christmas Meeting and Luncheon

WHEN: Monday 14 November, 2011
TIME: 10am for 10.30am start
COST: Adult \$30
VENUE: Tamboora Gardens Restaurant and Gallery, Baxters Drive, Waaia/Nathalia Road

Enjoy a light morning tea followed by a stunning Christmas celebration luncheon, catered by the famous Bernie Ryan. Weather permitting; the meal will be served in the gardens. Please BYO.

CONTACT Charney Hunt 03 5744 1671
BOOKINGS ESSENTIAL by Friday 4 November, 2011



Upcoming Events (continued)

National Trust Events

WALKING TOURS

Roundabout the Parliamentary Precinct

WHERE: Meeting Place: In front of the Princess Theatre, 163 Spring Street, Melbourne
Finishing point: In the vicinity of Spring Street

WHEN: Sunday 27 November, 2011

TIME: 10am

COST: General: \$30
Member: \$25

This interesting walking tour with Kenneth Park will literally circle Parliament House and the Parliamentary Precinct. Enjoy the beautiful sight of some of our city's best open spaces and gardens juxtaposed with the magnificent public buildings of the Victorian Government. A cup of coffee at the conclusion of the walk is included in the price.

CONTACT National Trust (Vic) Bookings Office,
03 8663 7260

BOOKINGS ESSENTIAL

HERITAGE TRAVEL TALKS

Journey to Budapest

WHEN: Monday 28 November 2011

TIME: 9.45am

COST: General: \$25

Member (NT and RSL): \$20

VENUE: Anzac House, 4 Collins Street,
Melbourne

Budapest is the capital and largest city in Hungary. It became a single entity, occupying both banks of the Danube River, in 1873.

Regarded as one of the most beautiful cities in Europe, it boasts an extensive World Heritage area and a rich architectural legacy. Once a part of the Ottoman Empire, Budapest is home to diverse and fascinating streetscapes that blend historic and modern styles.

CONTACT National Trust (Vic) Bookings Office,
03 8663 7260

BOOKINGS ESSENTIAL

Colonial Christmas at Barwon Grange

Join in the festive spirit with Barwon Grange as it celebrates a Colonial Christmas from the Victorian era. Christmas-themed displays by the Geelong Artisans Group will showcase lace-making, porcelain painting, embroidery, quilting, textiles and beaded crafts. The exhibition will run from November through to January.

Admissions are \$6 Adults, \$5 Concession, \$3 Children, and \$14 for Families.

For our extended opening times, general enquiries and bookings for group of 10 or more: 03 5221 3906
barwon.grange@nattrust.com.au

wonderful small group
tours to choose
from in 2012 the
inspired
traveller

Mediterranean Three Islands

Sicily, Sardinia, Corsica,
19 Days, 29 May - 16 June

Ireland Treasures

14 Days, 20 June - 3 July

Alaska - Land & Sea

16 Days, 30 Aug - 15 Sept

Turkish Delights

22 Days, 24 Sept - 13 Oct

Morocco Beyond The Kasbah

15 Days, 15 - 29 Nov

www.theinspiredtraveller.com

See website for more tours in 2012

Phone (03) 5777 3503

email: howqua@mansfield.net.au



Sarah Stegley

owner of The Inspired Traveller
will personally
lead and host each
of these tours.

Valuations byjoel

ByJoel can quickly and accurately identify and value your Fine Art, Collectables and Antiques.

We have extensive accreditation and over 35 years experience as valuers for the following:

- Australian and International Art
- Superannuation Collections
- Market
- Corporate Collections
- Insurance
- Family Law
- Art Gallery and Museum Collections
- Asset Management
- Cultural Gift Program
- Local Government Reporting

Phone 1300 295 635
www.byjoel.com.au

byjoel WARREN JOEL
AUCTION & VALUATION SERVICES



The winner of the Global Ballooning flight is Mrs K. Shagreen. Congratulations!

What is your favourite memory at a Victorian Trust property?

"As a kid spending time with my grandpa at Gulf Station; learning about the animals, running around pretending to be pioneer. Very special to me."

A gift you can Trust

This Christmas why not give a gift that keeps on giving.

Whether its coming face to face with Ned Kelly at the Old Melbourne Gaol, hearing a tale from the high seas at Polly Woodside, a picnic in the secret gardens of Rippon Lea or a stroll back in time at the Gulf Station pioneer working farm, the National Trust membership is your ticket to Victoria. It allows you free entry to these and many other Victorian icons. The National Trust red carpet is also rolled out across Australia and throughout the world. National Trust membership travels with you.

On top of that, you're membership helps contribute to the conservation of Victoria's rich heritage. You will also be kept up to date with National Trust newsletters arriving in your letter box every quarter.

Skip the Christmas rush and save. Purchase a National Trust membership for a friend or relative before 1 December 2011 and we'll waive the \$35 joining fee, our little gift to you.

Visit www.natstrust.com.au/membership or call 03 9656 9830 for more information.

Recycle your old mobile phones, and help the Trust

Bring your old mobile phones in to Rippon Lea, Como, Polly Woodside or Tasma Terrace (the Trust's Head Office) and we'll not only recycle them for you but the National Trust will make \$5 from each phone you donate that will go towards our conservation efforts.



Annual Christmas party for volunteers, Branch committee members, their families and Trust staff



Following the success of last year's Christmas party at Rippon Lea, this year our 'thank you' Christmas party for all volunteers, Branch committees, volunteers and their families will be held aboard Polly Woodside.

WHEN: Sunday 4 December, 2011
TIME: 2pm – 5pm
COST: free
CONTACT: 03 9656 9800

Event booking form

Fill in form and send to the appropriate organiser WITH A STAMPED SELF-ADDRESSED ENVELOPE. All cheques payable to; National Trust (Victoria).

NO REFUNDS CAN BE GIVEN IF CANCELLATIONS ARE RECEIVED AFTER FINAL BOOKINGS ARE MADE.

Send to: **Bookings, National Trust, Lesley Barnes, 21 Winnetka Drive, LILYDALE, 3140,** or to address provided with event details.

Please mark envelope with name of event.

For more details please visit www.natstrust.com.au/events

EVENT

EVENT DATE / TIME

MEMBERSHIP NO.

NO. ATTENDING

NAME

ADDRESS

FURTHER DETAILS

TELEPHONE

CHEQUE/CREDIT CARD FOR: \$

☐ Mastercard ☐ Visa
☐ Amex ☐ Diners

NAME ON CARD

SIGNATURE

EXPIRY DATE



Classifieds

We have over 1 200 people who receive our monthly eNews, if you would like to receive the latest news, sign up today by sending an email to media@natrtrust.com.au with your details.

AUTHENTIC AGE

Advice on restoration, alteration and furnishing period houses and heritage buildings.

Telephone: (03) 9818 4324 or
www.authenticage.com.au

RICHARD CARTER

Slate craftsman, all roof plumbing inclusive of restoration, repairs and renewals. Period bullnose verandah design and construction. Reg. No. 25058.

Telephone: 0418 566 406 / 9482 4680

SILVER & METALWARE REPAIRS & REPLATING

- Have that small repair done or have your heirlooms fully restored by a silversmith with over 25 years experience in the antique restoration industry
- Services extend to all metals including brass, copper, spelter; also lacquering and antique finished.

Contact us now for a free appraisal and quotation

DUANE LUCAS (03) 9460 1123

11 Kurnai Avenue, Reservoir 3073

Email: heritagerepairs@primusononline.com.au



STAINED GLASS

Glass painting and leadlight. New commissions, restoration and reproduction work.

BRUCE HUTTON Almond Glassworks

Phone (03) 9568 5307
www.almond-glass.com

CHINA ROSE ANTIQUES

See our large range of Australian and imported antiques at
www.chinaroseantiques.com.au

KOSNAR'S PICTURE FRAMING AND MIRRORS

Restoration of artworks, photographs picture frames & mirrors, including regilding. Period Frames, Mirrors, Prints & Etchings.

488 Mt Alexander Road, Ascot Vale.

Telephone: 9370 5744

www.kosnar.com.au

RAPID PAINTING SERVICES

Domestic ~ Interior & Exterior ~ 7-day Service
Restoration Advice ~ Heritage & Contemporary

Contact: Max Joffe - M: 0407 303 388 - Ph: 9563 6363

Email: rapidmax@netspace.net.au

melbourne • sydney • brisbane • canberra

Job: Goods Shed No. 2

Heritage Slate: Trinity Heather

Specification: Slate to match original size and colour

Architect: Lovell Chen

Builder: Equiset



your roofing slate specialist...

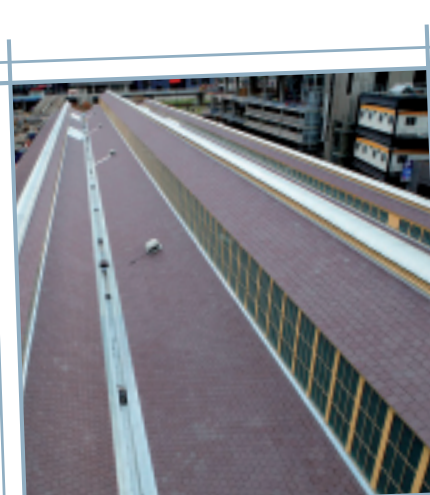
Tel 1300 884 334

info@roofingslateworx.com.au

www.roofingslateworx.com.au



elegance • distinction • harmony



ROOFING

SLATES, TILES, SPOUTINGS
& DOWNPIPES BY

Steeple Jack Jones

EDWARDIAN, FEDERATION
AND VICTORIAN ROOF AND
CHIMNEY RESTORATIONS

LICENSED ROOF PLUMBER 40647

0417 556 403
9543 6713

www.steeplejackjones.com

DAMP WALLS

- * Rising damp permanently cured by damp-course installation
- * University developed and tested
- * Over 10000 successful installations Australia-wide since 1981
- * 25 Year written guarantee
- * For free inspection, quote and advice

Phone: 9699 8233

Tech-Dry

Pty. Ltd.

Showroom: 177-179 Coventry Street,
South Melbourne

TUCKPOINTING, BRICKWORK, STONEMASONRY RESTORATION & REBUILDING

City & Guilds of London Institute trained craftsman.
Over 40 years experience.

PAUL BURTON

0408 343 502 or (03) 9789 7890



TUSCAN TRELLIS

One of Melbourne's leading specialists in painted finishes.

All periods, styles and projects
Metropolitan & Regional areas.

Please call for a folio viewing Rodney & Catherine Ashton.

0419 572 069 / 0419 883 443

or visit www.tuscantrellis.com.au

Advertisements listed in the *Victorian News* are paid advertisements.

Should you wish to advertise with the Trust, please contact media@natrtrust.com.au or call 03 9656 9800