

VICTORIAN NEWS



NATIONAL TRUST 'Our heritage... yesterday,
today and tomorrow'

August 2011

Living Heritage IS BACK AND BLACK



P10 | 2011 HERITAGE AWARDS

P19 | WIN A HOT AIR BALLOON FLIGHT FOR TWO

P5 | A REFRESHING CLASSIFICATION



Events in Brief: August 2011 to November 2011

National Trust of Australia (Vic)

Tasma Terrace, 4 Parliament Place, East Melbourne, Victoria 3002

Telephone: 03 9656 9800 Facsimile: 03 9650 5397 Email: info@nattrust.com.au

www.nattrust.com.au

Message from the Chairman

This issue of Trust News for Victoria relates a potentially great leap forward in heritage protection for the City of Melbourne, the first publicity for a totally new National Trust heritage site and innovative partnership, and celebration of the launch of our first new National Trust Branch for several years.

I am delighted that after more than 25 years of National Trust campaigning for a review of CBD heritage protection, that the City of Melbourne has now recommended 98 buildings worthy of statutory heritage protection to the Minister for Planning. Further information on this landmark review is included in the Advocacy Update in this issue.

In May I was fortunate to visit our newest heritage site, Nehill Brothers Farm, the Trust's new living history reserve located in South Purumbete near Camperdown. My visit was to mark the completion of a major milestone in the Trust's management of this



THE TRUSTEES OF NEHILL FARM, WITH THE CHAIRMAN AT THE TREE PLANTING CEREMONY HELD AT NEHILL FARM. (FROM LEFT TO RIGHT) DAVID HOSE, MALCOLM ALEXANDER, JIM PHILLIPS, DR. GRAEME BLACKMAN OAM, CHAIRMAN OF THE NATIONAL TRUST OF AUSTRALIA AND PHIL BURNOFF.

site and the fourth anniversary of the death of the bequestor Alexander Nehill. The Trust has been developing the site in a unique partnership with The Rare Breed's Trust of Australia and a group of independent Trustees. Nehill Brothers Farm will open in October as a stand-alone educational experience. The full story of this remarkable site is told in this issue.

I also warmly welcome the launch of our first new branch in several years. The Wimmera Branch was launched in Horsham in June. It was established following Trust support for local heritage issues. I am delighted to welcome all new members in the region and over 100 existing members who now have a new local group to support

their community activities. I am keen to see our Branch network extended further to cover all of our members. Branches continue to do great work in the community as those members who took part in events during our successful Heritage Festival will be aware. The report on the 2011 Trust Heritage Awards at the centre of this issue demonstrates how the Trust's branches vibrantly support and champion heritage issues in the community.

Dr Graeme L Blackman OAM
Chairman
National Trust of Australia (Vic)

Message from the CEO

June saw the Trust complete a restructure mid-way through our Strategic Plan 2009 – 2013 focused on business outcomes.

The Trust has not been immune from pressures during and post the Global Financial Crisis with farming interests particularly impacted by the floods in Victoria. The Trust recently leased its major farm interests in Mooramong, reducing our exposure and supporting our focus on our strategic plan, particularly in education and environmental activity.

In addition the restructure has resulted in the loss of six full time and four part time positions out of the 145 that are now employed by the Trust in Victoria. Eight of the positions affected were at our Head Office, Tasma Terrace. I am obviously grateful to our entire staff for the considerable effort and expertise brought

to the Trust and acknowledge those staff affected by the review for their considerable efforts for the Trust over a number of years.

With my managers and Board members, I attended many of the Heritage Festival events this year, and presented a number of heritage awards. This was our biggest community focused event for many years and I thank all of you who made it a success. As a result of the Festival's success, funding has now been secured from the Federal Government to develop the event further in 2012.

2010/11 saw Old Melbourne Gaol secure its first ever \$1m plus profit, as well as a place in the Victorian Tourism Hall of Fame.

This is a credit to all staff at the site and bucks the trend for general tourism visitation in the State. Amongst other things, the innovative Trust branded W Class tram in partnership with Yarra Trams raised our profile over the quieter Winter months. The pursuit of novel partnerships and new experiences and activities is part of our strategy and this can be clearly seen in this issue of *Victorian News*.



(FROM LEFT TO RIGHT) MAYOR CR GRAHAM PITTOCK, DANIE IDCZAK OF SAGES COTTAGE AND MARTIN PURSLOW CEO THE NATIONAL TRUST OF AUSTRALIA (VIC)

You will also be pleased to hear that Jennifer Bantow, who restarted the Festival in Geelong only two years ago, was deservedly recognised in the Queens Birthday Honours List as Order of Australia. Congratulations Jennifer!

Martin Purslow
CEO
The National Trust of Australia (Vic)

New Wimmera & Region Branch for the National Trust



HORSHAM TOWN HALL SAVED FROM DEMOLITION

On 1 June the new Wimmera & Region Branch was welcomed into the National Trust with the election of the Branch Committee comprising of Michael Gellert (Chairperson), Leigh Hammerton (Vice-Chairperson), and Helen Curkpartick (Secretary/Treasurer).

The Branch will represent our members and interests in the cities and shires of Horsham, Northern Grampians, West Wimmera, Yarriambiack, Hindmarsh and Buloke.

The inaugural meeting was attended by 50 local heritage supporters, the National Trust, as well as Jim Golden-Brown, Sonny Secomb and Raymond Marks of Barengi Gadjin Land Council, who graciously welcomed us.

The recent decision by VCAT to refuse demolition of the Horsham Town Hall galvanized significant community reaction to the positive value of the region's heritage. With the forthcoming heritage study for the Rural City of Horsham (partly funded by Heritage Victoria), and with future studies desirable for the previously unexamined Shires of West Wimmera and Hindmarsh, there will be unprecedented attention focused on heritage in this region.

The Board approved Branch Charter defines the aims of the new Branch as being to conserve, celebrate and promote cultural heritage in the Wimmera area. The Wimmera Branch will immediately work on a Memorandum of Understanding with the Barengi Gadjin Land Council, part of our mission to celebrate Victoria's heritage, and to respond to the new strategy recently launched by the Aboriginal Heritage Council. Additionally, the Branch will:

- organise diverse activities to help celebrate the heritage of the region
- advocate for heritage places under threat
- seek to influence the local councils to protect heritage places in their planning schemes
- participate and assist with coordination of heritage festivals
- coordinate activities with a broad and diverse range of partners, including local



MICHAEL GELLERT, CHAIRPERSON FOR WIMMERA BRANCH

historical groups, local government, and other not for profit groups

- participate with local government in heritage award schemes
- assist in maintaining the Trust's heritage places database.

Additional Committee positions will be created to deal with specific needs of the Branch.

More information including contact details for the Committee are available at www.nattrust.com.au



The National Trust of Australia (Vic) is set to bring an innovative attraction to the South Purrrumbete area

Four years ago, local farmer Alexander Nehill left Nehill Farm in Trust to the National Trust of Australia (Vic). To celebrate the completion of the first phase of the Living History Reserve construction works, The Chairman of the National Trust of Australia Dr Graeme Blackman OAM along with Nehill Farm Trustees, CEO of the National Trust Mr Martin Purslow and Fiona Chambers, from the Rare Breeds Trust of Australia, held a tree planting ceremony on Friday 27 May.

The National Trust manages a number of farms in Australia and has been working to develop Nehill Farm, with the support of its Trustees, into a living history reserve as envisioned by Alexander Nehill, with the intention that new life would be breathed into the 56 Hectare property. National Trust CEO Martin Purslow said: "The completion of much of the works at Nehill Farm ensures safe public access and a secure infrastructure for a variety of rare breeds. The work so far represents a six figure investment in the site which has seen new animal enclosures, restoration of the old orchard and the development of interpretation and picnic areas."

"We are delighted to be working with the National Trust of Victoria on this exciting project" said Fiona Chambers, Managing Director of the Rare Breeds Trust of Australia. "We are committed to ensuring that Alexander Nehill's bequest will be a lasting legacy that will secure the future of rare and endangered breeds of farm livestock in Australia."



THE TRUSTEES OF NEHILL FARM, WITH THE CHAIRMAN AT THE TREE PLANTING CEREMONY HELD AT NEHILL FARM. (FROM LEFT TO RIGHT) CEO OF THE TRUST (VIC) MARTIN PURSLOW, DAVID HOSE, MALCOLM ALEXANDER, SCOTT CARBURY OF CARBURY FENCING, JIM PHILLIPS, DR. GRAEME BLACKMAN OAM, CHAIRMAN OF THE NATIONAL TRUST OF AUSTRALIA, FIONA CHAMBERS MANAGING DIRECTOR OF THE RARE BREEDS TRUST OF AUSTRALIA, AND PHIL BURNOFF.

The innovative partnership between the National Trust of Australia (Vic) and The Rare Breeds Trust of Australia at Nehill will secure the viability and educational potential of this site and promote traditional breeds and farm practices throughout Australia. It will ensure that the reserve will contain unique breeds such as Suffolk sheep, Clydesdales, and the reintroduction of the now endangered Large Black Pig breed for which the site was once widely known, along with other animals that will complement our interpretation of the site and contribute to a wider understanding of the farming heritage of the region.

The Reserve will be open daily on a self guided basis to the public and for pre-booked education groups and special event days from October 2011. Education programs will commence in the first school term in 2012. Our aim is to promote a greater understanding of the importance of traditional breeds and practices undertaken at Nehill and the working life of our Farm to the wider community.

For more information on Nehill Farm please visit www.natstrust.com.au



NEHILL FARMS LIVING HISTORY RESERVE WILL SECURE THE FUTURE OF RARE AND ENDANGERED BREEDS OF FARM LIVESTOCK IN AUSTRALIA.

A refreshing classification



Recent research has lifted the lid on the little-documented Australian history of what is arguably the world's most popular carbonated soft drink.

Late last year, a member of the National Trust's Building Committee spotted a real estate advertisement for a small factory in Clarke Street, South Melbourne. The factory is a modest clinker brick building, distinguished by vast bays of concrete-framed, multi-paned windows – described, by the agent as “classic post-war modern”. Admittedly a striking element in the streetscape, the building was offered for sale with vacant possession and was therefore considered a prime candidate for demolition and was brought to the Committee's attention as a candidate for assessment by the Buildings Committee. Preliminary research discovered that contrary to the agent's assertions, the factory did not date from the post-war era, but, rather, was built in 1938. What caused an even greater ripple of interest from the Committee was that its original occupant was the *Coca-Cola Company*.

By 1941, *Coca-Cola* had become as popular in Melbourne as it had elsewhere around the world. In 1952 it was so successful that after spending little more than a decade at South Melbourne, the business moved to an existing but larger premises in Brunswick, and, in 1955 moved to a huge purpose-built complex (designed by Stuart Calder) in Moorabbin, where it remains based today.

Of the four factories established by *The Coca-Cola Company* in Australia during

its initial phase of expansion in Australia, only one other survives in Brisbane, albeit of later date (1942). The former bottling plant in South Melbourne thus stands out as the oldest surviving example of the company's infrastructure in Australia. It is now classified as a building of state significance for its historical associations with the local establishment of one of the most widely recognised products in the world.

By Simon Reeves



Coca-Cola dates back to 1886, when American physician Dr John Pemberton developed a health tonic with an alliterative name referencing the cocoa leaves and kola nuts that form its active ingredients. A year later, exclusive rights to the formula were acquired by businessman Asa Candler, who embarked on a bold marketing campaign that made *Coca-Cola* a household name within two decades. International distribution began in the early 1900s, but did not achieve widespread success until the mid 1920s, when the company formed a foreign division. In 1930, this became a subsidiary, *The Coca-Cola Export Corporation*, which sent out survey teams around the world.

The Coca-Cola Company of America had registered its name and logo in Australia as early as 1905. A Perth accountant made a failed attempt to acquire the local rights in 1917. There were no further developments until 1937, when the *Coca-Cola Export Corporation* sent one of its survey teams to Australia. The first branch was established in Sydney in December 1937, and a factory in Waterloo commenced production the next year.

Three months later, it was reported that *Coca-Cola* would also be bottled in Victoria, where “the building of a factory has already commenced” in South Melbourne. This “handsome building”, as it was later described in the trade press, was due to be “practically complete” by the end of 1938. In October, as construction progressed, *The Coca-Cola Company* was officially registered in Victoria.



Trade marks of *The Coca-Cola Company* are used with permission. *The Coca-Cola Company* is not the producer of this article nor does it endorse the contents.



Family history leads to a fashion find

By Elizabeth Anya-Petrivna, Curator – National Trust Collections Team

The National Trust of Australia (Vic) holds the largest nineteenth century wedding dress collection in Australia. The acquisition of a green wedding dress adds another link with our rich local fashion history, and enhances the Trust's Costume Collection.

The Trust has recently acquired Elizabeth McIntyre's wedding dress, which she wore at St Johns Church, La Trobe Street in 1873. Donated by her great granddaughter Heather Murchison, the dress is an outstanding example of the style of fashion available to women in Melbourne in the 1870s. What makes the dress distinctive is its subdued and restrained elegance. Elizabeth had a preference for

the simple and unadorned at a time when women's fashions were highly decorated, multi-coloured and swaged with drapery.

Her dress is an exception. Locally made, the construction shows a remarkable attention to detail and is a combination of the machine and hand made. The interior is well finished, debunking a common complaint made about colonial fashion – that it was of inferior quality.

Elizabeth McIntyre (nee Organ) married in 1873 when she was 21 years old. A daughter of a Port Phillip pilot, she lived by the bay, firstly at Queenscliff and then Williamstown. It was as a boarder at the girls school The Priory in Geelong that Elizabeth befriended the McIntyre sisters. Family legend claims that Elizabeth first met their brother Peter Duncan McIntyre whilst visiting the family property in the Western District during school holidays. Peter was a grazier, and after marrying him she left her life by the sea and moved to Peshurst, where the young couple settled on the McIntyre's sheep farm.



AN UNUSUAL ADDITION TO THE TRUSTS COSTUME COLLECTION
INSET: ELIZABETH MCINTYRE LATER IN LIFE
LEFT: A STYLISH ELIZABETH MCINTYRE'S AS A YOUNG GIRL



WURUNDJERI ELDER, UNCLE RINGO TERRICK PERFORMING A SMOKE CEREMONY AT THE RECENT ROSS HOUSE COMMUNITY OWNERSHIP LAUNCH (IMAGE CREDIT - MICHAEL GRIFFITHS)



THE TENANTS AT ROSS HOUSE WORK ON A WIDE RANGE OF ISSUES SUCH AS DISABILITIES, REFUGEES, HEALTH AND ADVOCACY (IMAGE CREDIT - STÉPHANIE DONSE)

National Trust External appeals

The Trust currently hosts more than seventy appeals. Monies donated through the Trust for the restoration of heritage places or objects attract tax deductibility status. Generally, the places should be owned or managed by the community or a not-for-profit organisation, and should be able to be enjoyed by the public.

We are perhaps best known for our church appeals, including St Patrick's and St Paul's Cathedrals in Melbourne. However the diversity of places we can support is demonstrated by recent appeals for the Skipping Girl Vinegar Sign in Richmond, and for the Robbie Burns Statue in Camperdown. Our latest appeal is for Ross House in Melbourne.

The five storey heritage-listed Ross House building in Flinders Lane provides affordable, accessible office space to over 50 small not-for-profit groups working for

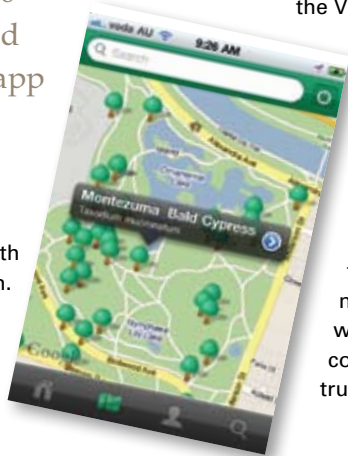
environmental and social justice. You can support conservation works at Ross House by donating to the National Trust of Australia (Victoria) Ross House Heritage Appeal at www.rosshouse.org.au or by calling 03 9650 1599.

If you would like the Trust to host a conservation appeal check our eligibility criteria at www.nattrust.com.au/donations_appeals/external_appeals or call Paul Roser, Conservation Manager on 03 9656 9802 to discuss how a Trust appeal can assist your community's restoration project.

More 'Trust Trees' get the Winter update

Since the launch of 'Trust Trees' in March more than 1350 people have downloaded the Trust's first iPhone app to their mobile phone.

Many have visited Victoria's significant trees and shared photographs and information with us through the feedback function. Now is the time to get the Winter update, which includes more photographs, more locations, and more historic



and botanical details on the 24000 trees on our Register of Significant Trees. We thank the Victorian Government and

Heritage Victoria for making 'Trust Trees' possible through Victoria's Heritage Grants Program. 'Trust Trees' was developed by www.wspdigital.com and is available for free from Apple iTunes. For more information visit our website http://www.nattrust.com.au/trust_register__1/trust_trees.

Barwon Park Spring 2011

To celebrate the completed restoration works at Barwon Park, the National Trust of Australia (Victoria) is holding a gala event in Spring 2011.

This majestic 42-room bluestone mansion and stables is largely in its original condition, resonating with the glory of Victoria's pastoral heritage.

The property has been owned by only two families, the Austins and the Batsons, and was left to the Trust by Sydney Batson.

For more information about this event, or information about holding your own event at Barwon Park, please visit the website at www.nattrust.com.au/events.



Notice of 2011 Board Election

In accordance with the Constitution of the National Trust of Australia (Victoria), two Directorships will become vacant in November 2011. Retiring directors are eligible for re-election.

Nominations are invited for Directorships and must be received by the Company Secretary by 5.00pm on Friday 15 August 2011 at the Registered Office of the National Trust of Australia (Victoria), Tasma Terrace, 4 Parliament Place, East Melbourne, 3002. Nomination forms are available from the Registered Office.

Each candidate is required to lodge a background summary not exceeding 100 words and a photograph with their nomination. This summary should include age, academic qualifications, awards, service to the National Trust, involvement in preservation and conservation matters, offices held and date of joining the National Trust.

If a vote is required ballot papers will be sent to members for a postal ballot. The completed ballot paper must be returned by 5.00pm Friday 11 November 2011, addressed to the 'Returning Officer' at the Registered Office of the National Trust of Australia (Victoria), Tasma Terrace, 4 Parliament Place, East Melbourne 3002 in the envelope provided. The election results will be announced at the 2011 Annual General Meeting and published in the following edition of *Victorian News*.

Close of Voting Roll

Please note that the voting roll will close at 5.00pm Monday 3 October 2011 and only members who are financial at that time will be eligible to vote.

55th Annual General Meeting

Members are advised that the AGM will be held on Saturday 19 November 2011 at Barwon Park, 105 Inverleigh Road, Winchelsea.

Jane Macneil
Company Secretary

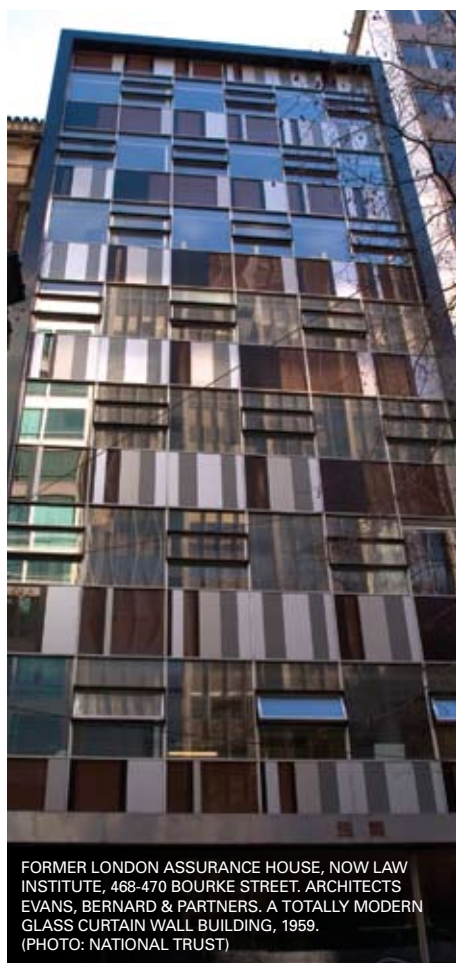


Advocacy Update

The latest news on our advocacy and campaigns is available at www.nattrust.com.au and via our Facebook page National Trust of Australia (Vic) Advocacy.

Central City heritage amendments c.180 and c.186

The amendments provide an updated heritage assessment by Graeme Butler & Associates of 99 buildings that have previously been identified by City of Melbourne heritage studies (in 1985 and 1993) but are not currently subject to heritage planning control. It recommends that 98 buildings be included in the Melbourne Planning Scheme Heritage Overlay. Around a dozen places are post-war



FORMER LONDON ASSURANCE HOUSE, NOW LAW INSTITUTE, 468-470 BOURKE STREET. ARCHITECTS EVANS, BERNARD & PARTNERS. A TOTALLY MODERN GLASS CURTAIN WALL BUILDING, 1959. (PHOTO: NATIONAL TRUST)

commercial buildings, and this has already stimulated public and media debate about changing notions of heritage. The study also recommends that 12 of the buildings be subject to internal alteration controls, mainly for the significance of publically accessible lobbies.

Planning Scheme Amendment C.180 will introduce interim heritage controls via a Ministerial Amendment without notification; and Planning Scheme Amendment C.186, which will seek to introduce permanent controls, will follow the usual planning scheme amendment process. Property owners and the public can make a submission, to be heard by a panel if one is appointed and make a representation to Council. More at www.saveourcity.com.au

CBD height limit review

Following on from our article 'CBD Height limits – do they stack up?' in the May 2011 issue of *Victorian News*, the City of Melbourne has released its much awaited *Central City Built Form Review*. Amendment

C.188 is an amendment that will flow from the recommendations, and proposes to modify and refine existing building height and setback controls in the Hoddle Grid area of the central City (the 'civic core') as well as streamlining several different planning controls into one. Podium heights and setbacks will be made mandatory.

The report to Council stated "Mandatory height controls have been extended along the Swanston Street and Elizabeth Street corridors by extending the existing retail core height control of 40m, west of Elizabeth Street and northwards up towards Victoria Street. These are areas that both locals and visitors would identify as 'classic' Melbourne cityscape. They generally have a fine grain of uses, a lower scale streetscape and many heritage and important civic buildings. Height controls are an important means of retaining this character." We have prepared a detailed submission to the City.

Boroondara - Activity Centres

Heritage is one of the defining characteristics of much of the City of Boroondara, and there are numerous strips and clusters of fine Victorian and Edwardian and interwar retail buildings, especially in the eastern parts of the municipality and along the railway



ARGUS BUILDING, 284-294 LA TROBE STREET. GODFREY & SPOWERS IN ASSOCIATION WITH WH BUCK, 1924-26. HERITAGE PROTECTION LONG OVERDUE. (PHOTO: NATIONAL TRUST)



NATIONAL MUTUAL LIFE CENTRE 455 COLLINS STREET, COMPLETED 1965.



THE ROYAL INSURANCE BUILDING, 430 COLLINS STREET. YUNCKEN FREEMAN ARCHITECTS, 1966. RAIA GENERAL BUILDINGS AWARD 1967. (PHOTO NATIONAL TRUST, 2004)

lines. Only a handful have been protected through a Heritage Overlay (eg. Auburn Village and Maling Road), while others have interim controls and are waiting for a panel process (Glenferrie Road/Burwood Road and Hawthorn Village).

Following a packed public meeting on 30 May where the community spoke of its concerns about the Activity Centres Strategy and we spoke to our submission noting there are many more shopping strips and individual buildings that have obvious heritage value but are currently not protected, the City of Boroondara has adopted a modified strategy to limit building heights, protect neighbourhood character and accommodate future growth. Changes to the draft strategy agreed upon include: reducing the number of precincts where a maximum height of six storeys (22 metres) is proposed from six precincts to one precinct; setting a maximum height of three storeys for a majority of the activity centre precincts; deleting Maling Road from the Strategy, to rely instead on existing heritage protection.

Boroondara - Heritage precincts in Kew study

In June the City of Boroondara received and noted the outcomes of the consultation process undertaken on the draft *Assessment of Heritage Precincts in Kew* study, and has



HOUSE AT KEW BY ARCHITECT ANATOL KAGAN, 1957 (PHOTO: NATIONAL TRUST)

requested that the Minister for Planning prepare and exhibit an amendment to the Boroondara Planning Scheme to introduce interim and permanent controls.

Six new precincts covering 450 properties are recommended, including the Yarra Boulevard precinct which was featured in the February 2011 edition of *Victorian News*, and is significant for its outstanding collection of post-war Modernist residences. We have previously met with Boroondara Council planners in 2010 to urge progress on this important precinct and we welcome its inclusion. The consultant, Lovell Chen, notes: "The Yarra Boulevard precinct is important in the wider metropolitan region for its richness and variety of Modernist dwellings, including some major work by leading Melbourne architects of the post-war period."

HMVS Cerberus, Black Rock

Launched in 1868, the Cerberus is the only remaining breastwork monitor class warship left in the world. The Trust holds on behalf of the Friends of the Cerberus the \$500,000 grant from the Federal Government's National Heritage Investment Initiative for conserving HMVS Cerberus. Following many months of negotiation with the Friends, Heritage Victoria and the Historic Heritage Branch in Canberra, the funding agreement has been renegotiated to allow for the bracing of the gun turrets. There will also be a 3D scan of Cerberus to provide the first comprehensive digital record of the vessel. Design work for physical works to prevent collapse of the turrets through the deck can now also commence. We are grateful to Heritage Victoria for their assistance and to the Federal Government for allowing the

variation to the original agreement. The project is only possible because Bayside City Council has agreed to take on the project management role.

Bacchus Marsh Avenue of Honour

The hearing conducted before the Heritage Council ran over three days in June. The Trust was amongst the community groups and hundreds of individuals opposed to the proposed removal of five mature elms and construction of a new roundabout. Our case was run *pro bono* by barristers Anthony Southall QC and Megan Fitzgerald, instructed by Middletons Solicitors, with expert witness appearance by Dr Greg Moore of Burnley College. We are extremely grateful to them all for their invaluable assistance on this vital matter. The Minister for Planning will be making the final determination on the project following receipt of the report from the Heritage Council. At time of writing the report of the Heritage Council has not been made public.



BACCHUS MARSH AVENUE OF HONOUR PHOTOGRAPH BY SARAH WOOD



2011 Heritage Awards

Conducted in early May during the 2011 Heritage Festival, the Awards saw attendance of 250 people and recognised outstanding contribution to heritage conservation

In 2010 the Geelong & Region and the Ballarat Branches of the Trust coordinated Heritage Award schemes with their local governments to great acclaim. This year we expanded the program, and worked in partnership with City of Greater Geelong, City of Ballarat, Shire of Mornington Peninsula and Bass Coast Shire

Awards, plaques and certificates were presented in total to more than 40 projects, owners and practitioners across a range of categories that included:

- Creative Reuse of a Heritage Place;
- New Work/Development within a Heritage Area;
- Restoration of a Heritage Place;
- Specialist Heritage Trade Skills; and
- Sustainability and Greening of a Heritage Place

In 2012 we will expand the program further and expect to work in partnership with up to ten municipalities. The program especially provides an opportunity to link the work of our Branches in regional and rural Victoria to the work of Local Government. We support local government in celebrating and promoting the vast number of positive stories and outcomes that have been achieved by the hard work of planners and advisors in their area.



We particularly look to celebrate the positive outcomes that reinforce the value of the heritage advisory service, which is funded jointly by Heritage Victoria and local government. The heritage advisory service has been invaluable in the administration of the local heritage overlay, and personal stories of the positive contribution of the heritage adviser were recounted on numerous occasions during the award ceremonies.

The Mornington Peninsula Shire and Mornington Peninsula Branch presented awards to:

Menzies Inc., Sages Cottage, Baxter (restoration)

Cliff Rest, 3662 Pt Nepean Road, Portsea (restoration of private dwelling)

Mornington Peninsula Shire, The War Memorial, Tyabb (restoration)

St Mark's Anglican Church, Dromana (interior and exterior restoration works)

Hastings Uniting Church (interior restoration)

Railways Station Primary School, Tyabb Tyabb (interior and exterior restoration)

Rye Historical Society (creative re-use of a heritage place)

Fletchers Real Estate, Ocean Beach Road, Sorrento (adaptive commercial re-use of a heritage place)

The Green Teams at Red Hill Consolidated School (recognising the contribution they have made to the conservation and greening of the National Trust property Endeavour Fern Gully at Red Hill)

Steve Hofer of Williams Kaye Hofer Architects (architectural excellence in restoration of Mt Martha House)

David Hampton, Project Manager, Mornington Peninsula Shire (project management, restoration of Mt Martha House)



TRUST BOARD MEMBER KRISTIN STEGLEY, MAYOR CRAIG FLETCHER, COUNCILLOR SAMANTHA MCINTOSH & AWARD WINNERS, FRIENDS OF THE BALLARAT BOTANICAL GARDENS





100 WESTERN BEACH PIERPOINT DEVELOPMENT
GEELONG (PICTURE BY DAVID ROWE 2011)

Hallan Whittle of Canadian Shingle Fixers for work at St Johns Anglican Church, Sorrento (specialist roofing skills)

Steven Edwards, Carpenter, for work at 797 Esplanade, Mornington (specialist carpentry skills)

Daniel Idczak for personal excellence in project management in restoration of Sages Cottage, Baxter

The City of Greater Geelong and Geelong & Region Branch presented awards to:

Sacred Heart College Chapel (restoration - reconstruction of interior pier)

Lisa Calafiore and Ross Nolan, 13 Alexandra Ave, Geelong (infill development in heritage area)

Michael and Celia Quinn, Pier Point Development, 100 Western Beach Road, Geelong (infill development in heritage area)

Chris Lynch and Michael Dodemaide, Former Steam Coach Hotel, 49 Mercer Street, Geelong (restoration and verandah reconstruction)

Felix Hemingway, City of Greater Geelong Bandstand Rotunda, Newcombe Street Portarlington, (restoration)

John Brown and David Hannah, City of Greater Geelong, Geelong Sale Yards Market Office Building, North Geelong, (substantial repairs and repainting)

Mrs Jackie James and Antoni Pijaca, 'Ormond Lodge' 75 Ormond Road East Geelong (re-tuckpointing of front verandah brickwork)



ARDOCH GEELONG DAVID ROWE 2011



MORNINGTON PENINSULA AWARDS MORWEN WATKINS, CHURCH WARDEN ST MARK'S ANGLICAN CHURCH DROMANA



GEELONG BRANCH PRESIDENT JENNIFER BANTOW, GEELONG DEPUTY MAYOR CAMERON GRANGER & ROOF RE-SLATING & VERANDAH REPAIR AWARD WINNERS KERRIE & RODNEY JONES FOR 'OLONGALAH'

Kerrie and Rodney Jones, 'Olongalah' 292 Latrobe Terrace, Newtown, (roof re-slating and verandah repairs)

Wendy and Rod Franklin, 'Ardoch' 298 Latrobe Terrace, Newtown, (roof repairs, re-slating and terra cotta ridge redecoration)

Simone Wallis, VicTrack, Signal Box A, Geelong Railway Station (repairs and repainting)

Pauline Braniff and Malcolm Condie, 'Chepstowe' 16 Beach Parade, Drumcondra (environmentally sustainable additions)



MARTIN DIXON MP MEMBER FOR NEPEAN, MINISTER FOR EDUCATION WITH SEAMUS THOMSON, RED HILL CONSOLIDATED SCHOOL

The City of Ballarat and Ballarat & Region Branch presented awards to:

Two of the awards were kindly sponsored by Haymes Paint and Commerce Ballarat.

Golden Point Learning and Cultural Environment (GPlace) (creative reuse of a heritage place)

Madin Lyons Associates Pty Ltd & Miles & Co Builders, 3 Crocker Street, Lake Wendouree (new work/development in a heritage precinct)

Ebenezer Presbyterian Church, Armstrong Street South, Ballarat (restoration)

John Murnane, heritage slate tiler, 183 Scott Parade, Ballarat (heritage trades award, sponsored by Haymes Paint)

S J Weir Ballarat, Ballarat Mechanics Institute (heritage trades award, sponsored by Haymes Paint)

Edith Fry, 10 Sovereign Street, Golden Point (sustainability award, sponsored by Commerce Ballarat)

Bass Coast Shire and the Bass Coast Branch presented awards to:

St Philips Anglican Church, Parish of Bass and Philip Island (restoration)

Amess House, Churchill Island Heritage Farm, Philip Island Nature Parks (conservation with specialist trade skills)

Round-up at Branches

Geelong & Region Branch

Branch President Jennifer Bantow was granted a Medal of the Order of Australia in the Queen's Birthday Honours List on 13 June. Jennifer's award was for 'service to the community through heritage and historical organisations'. The Trust passes on its congratulations to Jennifer, and is grateful for the incredible dedication to voluntary service that Jennifer has provided to the Trust's mission in the Geelong region and beyond over many years.



CONSERVATION MANAGER PAUL ROSER, DAVID ROWE, TRUST GEELONG BRANCH PRESIDENT JENNIFER BANTOW AND GEELONG DEPUTY MAYOR CAMERON GRANGER

Ballarat Branch

The Ballarat Heritage Awards combined with Heritage Weekend and the retrieval of the Burke and Wills time capsule has made for a hectic and rewarding time for Branch members. Presently the Branch is updating photographic records of National Trust listed buildings and providing improved descriptions and condition reports on our significant trees.

The Ballarat Branch regularly organises for members to maintain the Hepburn graves at Smeaton near Ballarat. These important graves are located in an intact private cemetery with historical associations with the Hepburn family. The branch is now involved in the development of a conservation management plan for the graves, and this work will be carried out by

local heritage architect Wendy Jacobs, a member of the Ballarat Branch committee. For more information or to contact the Ballarat Branch telephone 03 5333 5163.

Mornington Peninsula Branch

Apart from the very busy period arranging both the Festival and the Awards, the Branch has continued with its heritage agenda by taking part in the Shire's Heritage Study for Mornington, Mt Eliza and Mt Martha and recently attended the edit session of the Shire's Thematic History. Among issues causing concern is the sale of yet another lot on the land adjacent to the Collins Settlement Centre and the clearing of vegetation there to prepare the site for sale. Also the Branch is monitoring the

Woodlands Estate which it supported at a panel hearing some years ago and the proposed Chairlift at Arthurs Seat which has yet to come before Council. For more information or to contact the Mornington Peninsula Branch telephone 03 5988 9853.



HEATHER HORNE AT THE 2009 GULF STATION OPEN DAY, WEARING A COSTUME BELONGING TO HER GRANDMOTHER MARY ANN BELL. (PHOTO BY ALEX MOSS.)

King Island Tour November 2011

This exciting four day tour to King Island is scheduled for 24-27 November 2011.

Appreciate the stunning scenery and enjoy the wildlife, spectacular sunsets and delectable cheeses. The tour covers all of the major tourist attractions on the island including the cheese factory, wildlife reserves, a calcified forest, Currie lighthouse, Sea Elephant Bay, fishing villages, the Kelp factory and Yellow Rock Beach and its shipwrecks.



The tour prices covers all meals, accommodation, tours, entries, airfares and transfer to the airport.

For a copy of the itinerary or to book please contact us on 03 9656 9800 or reception@natrust.com.au. Numbers for the tour are limited so book early so you don't miss out.

Obituary

Heather Horne (1920-2011)

On 31 March 2011, Heather Duckworth Horne nee Bell, last grandchild of William and Mary Ann Bell, the original settlers of Gulf Station, passed away. Heather was 91 years old.

The National Trust of Australia (Vic) was pleased to welcome Heather as our special guest at the March Open Day at Gulf Station, Yarra Glen. She was delighted to see the newly completed conservation works at the homestead and was content to have lived long enough to see her wishes for the property fulfilled.

By Lesley Barnes, President, Friends and Relations of Gulf Station.

Heritage under pressure

An interview with Jim Gard'ner, Executive Director of Heritage Victoria

By Cassandra O'Brien

Heritage is important to all societies in Australia and abroad; it helps define our culture and identity, and contributes to our personal sense of place. The retention of valued heritage places, objects and areas, provides a tangible link to our shared, but sometimes contested, history. Without an understanding of our past, I don't believe we can clearly understand where we want to go as a society.

How have you seen regional communities benefit and/or adapt to heritage sites being protected?

Heritage places can be particularly important in regional areas, they often function as the main community gathering place, and also provide a connection to the past. Heritage sites also make a significant contribution to regional Victoria's tourism economy.

One reason the majority of Heritage Victoria's grants go to rural and regional areas is that the money spent there can make a huge difference to the local community through revitalising community buildings.

There are two sides to developing a heritage site: progress and development; and heritage protection. Considering this, what have you found the biggest challenge to be when it comes to informing the public about developing heritage sites?

One of the biggest misconceptions in the community is that statutory listing (inclusion on VHR or heritage overlay) means that change cannot occur. Listing is about managing change to retain heritage values whilst enabling it to be economically sustainable. The two sides of developing a heritage place, conservation and change, are not necessarily incompatible, and indeed change and development is often necessary to enable redundant places to be conserved and retained. Without new uses these places would deteriorate and their heritage values would be lost.



GPO IN MELBOURNE

A great example is Goods Shed North, now refurbished as state-of-the-art energy efficient offices.

It is also vital that the embodied energy of an existing heritage building is appreciated. Relatively minor modifications can significantly improve the environmental performance of older buildings and their reuse can save the huge energy requirements of demolition and production to build anew.

Recently Melbourne City Council's planning committee unanimously approved the recommendation to extend the heritage protection to 98 CBD buildings, which is the biggest expansion of heritage protection

in 30 years. What does this mean for Melbourne?

This is a great step forward for the City's heritage, and brings the local heritage listings up-to-date. It does not guarantee that every one of these buildings will be preserved unchanged, but it ensures that their heritage values are considered in any planning or development decision.

If you could get one message across about development on heritage sites, and why it is important to us, what would it be?

New development can exist alongside heritage. Many redundant, underused heritage places can accommodate new uses without losing their heritage values. Examples include the conversion of the GPO to retail or the reuse of the former Records Office as Victoria University's law school. The best developments of heritage sites understand the value of the place, use good contemporary design and achieve good social, environmental and economic outcomes that provide the ongoing repair and maintenance of the heritage place. We have to provide economically viable, ongoing uses for heritage places for them to be conserved for future generations to enjoy.



GOODS SHED NORTH

Trust treasures

The National Trust can not get by without its volunteers; they offer their expertise, time and passion to assist us with a myriad of different tasks at our many properties. We are indebted to all of our volunteers, and would like to thank you all for your tireless contributions to the Trust.

It is with gratitude that the Trust acknowledges Nance Houen and Elizabeth Howcroft, whose service to the Costume Collection has been dedicated and inspirational. As a formidable team of seven years, this duo has brainstormed ideas for events and fashion exhibitions at Como and tracked down acquisitions. One significant achievement, that will benefit the Trust for years to come, is the innovative and highly successful fundraiser for the Trust's Costume



NANCE HOUEEN, MARTIN GREEN, LEARNING & INTERPRETATIONS MANAGER NATIONAL TRUST OF AUSTRALIA (VIC) AND ELIZABETH HOWCROFT AT THE OPENING NIGHT OF MANNEQUIN.

Collection: the yearly Vintage Clothing Sale, with items donated from the public with all proceeds going to the Costume Collection.

Thank you Nance Houen and Elizabeth Howcroft for your generosity and tireless support to the Trust curators.

Upcoming Events

**AUGUST 2011 –
NOVEMBER 2011**

What better way to kick start your spring then with some of the Trusts exciting events!

Visit www.natstrust.com.au/events for additional information on events. Entry fees apply for Trust members for special fundraising events at Trust properties. 'Members' prices listed are for Trust members only and some events require pre-bookings.

Please note: The event details below are correct at time of printing, but are subject to change. To confirm information, the Trust recommends, phoning properties or visiting www.natstrust.com.au, before purchasing tickets or attending the events.

National Trust Property Events

BARWON PARK MANSION

105 Inverleigh Road, Winchelsea

Barwon Park 2011 event

WHEN: Spring 2011

CONTACT the bookings office on 03 8663 7260

BOOKINGS essential

For full details visit the website www.natstrust.com.au/events

Trick or Treat Kidz Fest, Celebrating all things spooky

WHEN: Saturday 29 October 2011

TIME: 10.00am - 4.00pm

COST: \$40.00 for a family ticket (includes 2 adults and 3 children)

Lots of fun and spooky activities and entertainment for children and families (come dressed to spook).

CONTACT Michelle Stocks
trickortreatkidzfest@yahoo.com
BOOKINGS are not required

Spring at the Mansion

WHEN: Sunday 30 October 2011

TIME: 2.30pm

COST: adult \$22.50, concession \$17.50

The Concert features local Geelong musicians including Kristine Mellens on piano, tenor Peter Harbinson and oboist Phoebe Stretton-Smith as well as a couple of surprises.

CONTACT 03 5267 2209
BOOKINGS are required

THE BRIARS PARK

Nepean Highway, Mt Martha

Frankston Amateur Winemakers Guild Wine Show

WHEN: Sunday 28 August 2011

TIME: 9.00am - 1.00pm

COST: general-adult \$10 entry fee covers all tastings and a monogrammed glass.

Our winemaking competition is an open amateur winemaking competition showcasing home-made wines from fruit/vegetable/flowers/herbs and red/white grape wines.

Competition categories to be judged include still, sparkling, fortified wines and liqueurs. In addition to tasting the many wines available, you may meet the winemakers and learn the techniques required to make your own wine.

You may sample wines made from citrus fruits, stone fruits, berries, guavas, carrots, parsnips, herbs and many other exotic ingredients. Red and white wines such as shiraz, cabernet, merlot, pinot noir, riesling, chardonnay, muscat are usually well represented.

CONTACT David Hart 03 5983 9082
BOOKINGS are not required

What Bird is That?

WHEN: Sunday 30 October 2011
TIME: 9.00am - 3.00pm
COST: free event

A morning for interested persons wanting to know about Peninsula birds. Bird walks and information session led by Peninsula Branch of Bird Observation & Conservation Australia. Morning tea provided.

CONTACT Max Burrows 03 9789 0224
BOOKINGS are not required

COMO HISTORIC HOUSE AND GARDEN

Corner Williams Rd and Lechlade Ave, South Yarra

Spookspotters Twilight Tours

WHEN: First Thursday of the month August and September 2011
TIME: 6.30pm - 8.30pm
COST: adult \$35, concession \$30, member: \$25

CONTACT www.comohouse.com.au
BOOKINGS essential

Celebrate Seniors Week at Como House – tour and café packages

WHEN: October 3 - October 7 2011
TIME: 1. Tour/morning tea 10.00am - 12.00pm
2. Tour/lunch 11.30am - 1.30pm,
3. Tour/afternoon tea 1.30pm - 3.30pm
COST: Senior Card holders only.
Morning or afternoon tea & house
tour package: \$15; Lunch & House tour
package: \$20

Enjoy Seniors Week at Como House and Garden. Join our guides for a mansion tour and choose from one of three delicious meal packages: morning tea, lunch or afternoon tea. See our website for more details: www.comohouse.com.au

CONTACT National Trust (Vic) Bookings Office
03 8663 7260
BOOKINGS are essential by October 3 2011

Spring into Spring Gardening Luncheon

WHEN: Friday October 7 2011
TIME: 11.30am - 3.00pm
COST: Senior Card holders only \$47

Join Como's Head Gardener on a behind-the-scenes tour of the historic mansion's beautiful grounds. Enjoy a delicious two course lunch at our on-site Café Bursaria followed by a guided tour of Como House.

CONTACT 03 9827 2500
BOOKINGS essential, phone Bookings Office
03 8663 7260

LABASSA

2 Manor Grove, North Caulfield, Melbourne

Adelphi Players Theatre Company presents 'Time To Speak' by Sylvia Rayman

WHEN: Tuesday 23 August
Wednesday 24 August
Thursday 25 August
Friday 26 August
Saturday 27 August
Sunday 28 August

TIME: Tuesday - Friday, 8.00pm
Saturday, 2.00pm and 8.00pm
Sunday, 2.00pm

COST: adult \$15, concession \$12
member: \$12

VENUE: 2 Manor Grove, North Caulfield,
parking in Orrong Rd.

An exciting thriller for the Winter season at Labassa.

CONTACT Barbara 03 9690 1593
BOOKINGS not required

The German Connection

WHERE: 2 Manor Grove, North Caulfield
WHEN: Sunday 21 August 2011
TIME: 10.30am - 4.30pm
COST: adults \$8, concession \$5.50,
child \$5.50, family \$20

Celebrating the work of J A B Koch, Architect of Labassa, with a photo display.

CONTACT Labassa 03 9527 6295
BOOKINGS not required

Open Days

WHERE: 2 Manor Grove, North Caulfield
WHEN: Sunday 18 September 2011
Sunday 16 October 2011
TIME: 10.30am - 4.30pm
COST: adults \$8, concession \$5.50,
child \$5.50, family \$20
11.00am and 2.00pm - tours of internal
decorative features
12.30pm - tour of external architectural
features

BOOKINGS not required

LA TROBE'S COTTAGE

Cnr Birdwood Avenue & Dallas Brooks Drive
(near the Royal Botanic Gardens and the Shrine), Melbourne

Victoria in the 1840s: C J La Trobe Society Annual General Meeting and Dinner

WHEN: Thursday 18 August 2011
TIME: 6.00pm - 7.45pm (meeting)
VENUE: Lyceum Club, Ridgway Place,
Melbourne
COST: \$25 talk and refreshments,
\$70 for dinner
member (NT, La Trobe Society,
Friends of La Trobe's Cottage): free
talk and refreshments, cost for dinner
component

Guest speaker, Emeritus-Professor Geoffrey Blainey AC, will talk about notable developments in the Port Phillip District during the 1840s. Refreshments will be served on

arrival and dinner will follow the meeting. A warm welcome is extended to Trust members and their friends.

CONTACT Dianne Reilly 03 9646 2112
BOOKINGS essential

Open House at La Trobe's Cottage

WHEN: Every Sunday during October to May
Last Sunday of the month during June
to September
TIME: 2.00pm - 4.00pm
COST: adult \$5, concession \$3, child \$3,
family \$10
member (NT, La Trobe Society, Friends
of La Trobe's Cottage): free

Tours will focus on Charles Joseph La Trobe as the visionary administrator of the Port Phillip District in the early years of the settlement of Melbourne and will provide a fascinating glimpse into family life at his "Jolimont" estate, with his wife Sophie and their children.

CONTACT 03 9656 9800
BOOKINGS not required

Spring Opening at La Trobe's Cottage

WHEN: Sunday 2 October 2011
TIME: 1.00pm - 4.00pm
COST: adult \$5, concession \$3, family \$10
member (NT, La Trobe Society, Friends
of La Trobe's Cottage): free

Enjoy a special Spring opening of La Trobe's Cottage, celebrating the 172nd Anniversary of the arrival of Charles Joseph La Trobe, Victoria's first Governor, and his family in early Melbourne.

CONTACT Lorraine Finlay 03 9563 6363
BOOKINGS not required

School Holidays at La Trobe's Cottage

WHEN: Monday 3 October 2011
Wednesday 5 October 2011
TIME: 1.00pm - 4.00pm
COST: adult \$5, Child \$3, concession \$3,
family \$10
member (NT, La Trobe Society, Friends
of La Trobe's Cottage): free

Children will discover how Charles and Sophie La Trobe and their four children Agnes, Nelly, Cecile and Charlie lived in early Melbourne. If it's fine weather bring a picnic and a blanket.

CONTACT Lorraine Finlay 03 9563 6363
BOOKINGS not required

La Trobe and the Bellarine Peninsula

WHEN: Saturday 22 October 2011
TIME: 10.30am - 5.00pm
VENUE: Queenscliff - various sites, venue
address advised on booking
confirmation
COST: \$35 lunch and talks

Visit St Georges Anglican Church, Queenscliff, the site of La Trobe's family's 1840s holiday house, and then after a light lunch the Queenscliff Historical Museum. Short informative talks will be given by local historians in the Town Hall.

CONTACT Dianne Reilly 03 9646 2112
BOOKINGS essential

Upcoming Events (continued)

The Western District – in the Footsteps of La Trobe

WHEN: Friday 18 – Sunday 20 November 2011
TIME: 6.00pm (for Friday evening reception)
VENUE: Hamilton and surrounding districts, venue address advised on booking confirmation

Join a weekend tour of the Western District, to which Charles La Trobe made many long journeys on horseback with his sketchbook in hand. Hamilton will be the base for this weekend as we visit properties and landmarks he knew in the 1840s.

CONTACT Dianne Reilly 03 9646 2112
BOOKINGS essential

POLLY WOODSIDE

2A Clarendon St, South Wharf, Melbourne

Pirate Days

WHEN: First Sunday of the Month
TIME: 10:00am – 4:00pm
COST: adult \$15, child \$8, concession \$12, family \$42
members: free

X marks the spot at Polly Woodside on the first Sunday of each month. Dress as a pirate and head to Polly Woodside to search for illusive buried treasure, walk the plank, join in pirate arts and crafts and have your face painted.

CONTACT 03 9699 9760
www.pollywoodside.com.au

Story Time

WHEN: Every Tuesday
TIME: 11.00am – 12.00pm
COST: adult \$15, child \$8, concession \$12, family \$42
members: free

Fun and interactive storytelling with a wide variety of stories, songs and activities. Stories are read aboard the Polly Woodside or, in inclement weather, down below deck!

CONTACT 03 9699 9760;
www.pollywoodside.com.au

Family Day

WHEN: 6 November 2011
TIME: 10.00am – 4.00pm

Join us for a family day of high seas action onboard Polly Woodside, Melbourne's favourite Tall Ship. Come dressed as a pirate and enjoy art and craft activities, roving performers, an animal farm, face painting, a treasure hunt and much more!

CONTACT 03 9699 9760
www.pollywoodside.com.au
BOOKINGS recommended

PORTARLINGTON MILL

7 Turner Court, Portarlington

Art Exhibition

WHEN: Saturday and Sundays in October 2011
TIME: 12.00pm – 4.00pm
COST: adult \$4, concession \$3, child \$2, family \$10
members: free

Exhibition of art by the Portarlington Painters including members of the U3A and Neighbourhood House Art groups.

CONTACT Andrew Mason 03 5259 3202
BOOKINGS not required

U3A Art Show

WHEN: Saturday and Sundays in November 2011
TIME: 12.00pm – 4.00pm
COST: adult \$4, concession \$3, child \$2, family \$10
members: free

Display of art by local senior painters.

CONTACT Andrew Mason 0408 172 770
BOOKINGS not required

10th Annual Attitudes Art Show

WHEN: Saturday and Sundays in December and January
TIME: 12.00pm – 4.00pm
COST: adult \$4, concession \$3, child \$2, family \$10
members: free

Exhibition and sale of art by local talented painters.

CONTACT Andrew Mason 0408 172 770
BOOKINGS are not required

PORTABLE IRON HOUSES

399 Coventry St, South Melbourne, Melbourne

Open Day

WHEN: first Sunday of each month (except January)
TIME: 1.00pm – 4.00pm
COST: adult \$5, concession \$3, child \$3, family \$10
members: free

Opportunity to explore the three portable iron houses on site, which are among the few pre-fabricated iron buildings remaining in the World.

CONTACT Pauline Reid 03 9645 7517
BOOKINGS essential

Mansions and Gardens – guided history walk

WHEN: Sunday 18 September 2011
TIME: 1.45pm – 3.45pm
COST: adult, \$20, concession \$18, child \$10, family \$10
members: adult \$15.00

This walk takes you from the humble iron cottages to the delightful Victorian terraces of St Vincent's Gardens.

CONTACT Pauline Reid 03 9645 7517
BOOKINGS essential

From Tents to Terraces – guided history walk

WHEN: Sunday 16 October 2011
TIME: 1.45pm – 3.45pm
COST: adult \$20, concession \$10, child \$10
members: adult \$15.00, child \$5.00

A guided walk which explores the impact of the 1850s gold rush on the growth of Emerald Hill – the original name for South Melbourne.

CONTACT Pauline Reid 03 9645 7517
BOOKINGS essential

Lanes and Byways – guided history walk

WHEN: Sunday 20 November 2011
TIME: 1.45pm – 3.45pm
COST: adult \$20, concession \$18, child \$10
members: adult \$15, child \$5

A guided 1.5hr walk exploring the bluestone lanes of South Melbourne.

CONTACT Pauline Reid 03 9645 7517
BOOKINGS essential

RIPPON LEA HOUSE AND GARDENS

192 Hotham Street, Elsternwick

Twilight Chamber Music

WHEN: Sunday 21 August 2011 – Visitors From England
Sunday 18 September – Miki Tsunoda, Helen Ayres, Simon Oswell, Molly Kadarauch and Rohan Murray
TIME: 6.30pm – 8.30pm
COST: single tickets: \$40, NT single tickets for members: \$35, subscription for any 6 concerts: \$210, subscription for any 4 concerts: \$140, full time students under 25 years, children and pensioners: \$25

CONTACT Team of Pianists on 03 9527 2851 or www.teamofpianists.com.au for further information and bookings
BOOKINGS essential, 9527 2851, info@teamofpianists.com.au

Father's Day

WHEN: Sunday 4 September 2011
TIME: 11.00am – 4.00pm
COST: adults \$12, concession \$9, child \$6.50, family \$30

Treat your Dad to a day in the garden at Rippon Lea. Join in a relaxed game of bowls or enjoy the sausage sizzle, live music and old fashioned games.

CONTACT 03 9523 6095
BOOKINGS Tickets available at the door or via:
www.ripponleaestate.com.au

September School Holidays

Come celebrate the school holidays this September at Rippon Lea with old fashioned games, creature catchers, and 'meet and greet' with Ripplea Bear. BYO Picnic.

BOOKINGS essential for activities,
03 8663 7260

Victorian Seniors Week at Rippon Lea

WHEN: Monday 3 October – Friday 7 October 2011
TIME: 10.30am – 12.30pm
COST: seniors: \$16, accompanying non-seniors: \$20

Visit one of Melbourne's great attractions Rippon Lea House & Garden during the Victorian Seniors Festival. Enjoy a stroll around the beautiful gardens at your leisure and take a look inside the magnificent mansion. Take in the surrounding view while Devonshire Tea is served on the Western Verandah.

Open House between 10.30am-11.30am

Devonshire Tea served on the Western Verandah between 11.30am-12.30pm

CONTACT 03 9523 6095
BOOKINGS are essential as seating is limited,
phone 03 8663 7260

Branch Events

ACTIVITIES COMMITTEE NATIONAL TRUST OF AUSTRALIA (VIC)

Yarra Valley Open Studios

WHEN: Sunday 11 September 2011

Yarra Valley glassblowers, artists, potters, printmakers, textile workers, gold and silver smiths plan to open their studios to the public. The Activities Committee plans to visit some of these on Sunday 11 September.

CONTACT Lesley Barnes 03 9735 5772
BOOKINGS essential

Steam and Cuisine

WHEN: Wednesday 14 September 2011
TIME: 12.00pm – 3.30pm
COST: adult \$75, child \$58.50
members: adult \$70, child \$58.50

'Puffing Billy' steam train to Lakeside Station and return. Platter luncheon served on train.

CONTACT Lesley Barnes 03 9735 5772
BOOKINGS essential by Friday 26 August 2011

Yarra Ranges Regional Museum and the Lilydale Cemetery Tours

WHEN: Wednesday 19 October, 2011
TIME: 11.00am - 3:30pm
COST: adult \$38, child: \$30
members: adult \$35.00, child \$30
VENUE: Yarra Ranges Regional Museum:
35-37 Castella St, Lilydale. Lilydale
Cemetery: Victoria Road, Lilydale

Conducted tours of the recently opened Yarra Ranges Regional Museum and historic Lilydale Cemetery.

CONTACT Lesley Barnes on 03 9735 5772
BOOKINGS essential by 5 October 2011

Face to Face at Gulf Station

WHEN: Sunday 30 October 2011
TIME: 10.00am – 4.00pm
COST: gold coin donation
VENUE: 1029 Melba Highway, Yarra Glen, Mel
Ref 267, C11

To celebrate history week from the 23 – 30 October 2011, Gulf Station will be open to celebrate the Bell pioneer family. Bring memorabilia to "show and tell" of characters you know about. Pack a picnic. Tea and coffee will be available.

CONTACT Lesley Barnes 03 9735 5772
BOOKINGS are not required

NORTH EAST WOMEN'S AUXILIARY

Group Winery Tour and Luncheon at Tahbilk

WHEN: Monday 8 August 2011
TIME: 10.00am for 10.30am start
COST: adult \$30
VENUE: Tahbilk Winery and Wetlands Café
254 O'Neil's Rd, Tahbilk via Nagambie

Morning Tea followed by Quarterly Meeting and 2-course meal. Historic Winery Tour and Wetlands Walk in early afternoon.

CONTACT Charney Hunt 03 5744 1671
BOOKINGS essential by 1 August

MORNINGTON PENINSULA BRANCH

Private Garden Viewing

WHERE: Private Garden Mt Martha, venue
address advised on booking
confirmation

WHEN: Sunday 20 November 2011
TIME: 2.00pm – 4.00pm
COST: adult \$15.00, concession \$12
members: adult \$10

A Balcombe family descendant will open his garden for Trust members and friends. Includes afternoon tea. Trading table offering items for sale. Proceeds towards the restoration of 100 year old hand-painted doors in the Edwardian Room at The Briars.

CONTACT Elizabeth 03 9580 9617
BOOKINGS essential

Branch Annual General Meeting

WHERE: President's Garden Blairgowrie, venue
address advised on confirmation of
attendance

WHEN: Saturday 26 November
TIME: 11.00am
COST: no charge applies

President's Report, Election of Office Bearers for 2012. Followed by refreshments and garden viewing.

CONTACT Elizabeth 03 9580 9617
BOOKINGS essential

MOUNT ALEXANDER BRANCH

Afternoon Tea in the Gardens at Norwood

WHERE: The garden of Norwood Homestead,
Norwood Road Wareek
(Directions provided on booking)
TIME: 2.00pm – 4.30pm
COST: adults \$10 including afternoon tea

Afternoon tea in the garden and grounds of Norwood Homestead, a grand example of the gothic revival style built in the 1860s by pastoralist Alfred Joyce. (internal viewing of the homestead is not available.)

CONTACT Brian Tresidder 03 5472 1108 or
tresidderbrian@yahoo.com.au
BOOKINGS essential by 2 October 2011

MACEDON RANGES BRANCH

Melbourne Chinese Museum Chinese Museum Tour & Yum Cha

WHERE: China Town Melbourne CBD
WHEN: Sunday 27 November 2011
TIME: 10.00am for 10.30am - mid Afternoon

A conducted tour of the Melbourne Chinese Museum will be followed by Yum Cha.

CONTACT Debbie Fleming 03 5426 1931
nationaltrustMR@gisnet.net.au
BOOKINGS essential by Wednesday
23 November 2011



Upcoming Events (continued)

National Trust Events

WALKING TOURS

East Melbourne Stroll

WHERE: Meeting Place: Corner Clarendon Street and Wellington Parade, East Melbourne (Hilton Hotel)
Finishing Point: Vicinity of Wellington Parade, East Melbourne

WHEN: Sunday 14 August 2011

TIME: 10.00am

COST: general: \$30
members: \$25

Join this meandering walk with Kenneth Park and experience one of Melbourne's finest suburbs, noted for its superb streetscapes and beautifully preserved historic buildings. A Winter treat. A cup of coffee at the conclusion of the walk is included in the price.

CONTACT Bookings Office, 03 8663 7260
BOOKINGS essential

North Carlton Walk

WHERE: Fenwick and Rathdowne St, North Carlton
Finishing point: near the starting point.

WHEN: Sunday 4 September 2011

TIME: 10.00am

COST: general: \$30
members: \$25

Discover more of the heritage of inner northern Melbourne on this lengthy walk with Kenneth Park through the fine residential area of North Carlton. Admire historic streetscapes offering a wide selection of buildings from colonial and Edwardian times. A cup of coffee at the conclusion of the walk is included in the price.

CONTACT National Trust (Vic) Bookings Office, 03 8663 7260
BOOKINGS essential

Richmond Hill Ramble

WHERE: Meeting place: St Ignatius Church, 326 Church Street, Richmond
Finishing point: near corner Swan and Church Streets, Richmond

WHEN: Sunday 30 October 2011

TIME: 10.00am

COST: general: \$30
members: \$25

This fascinating walk with Kenneth Park delves further into the architectural and social heritage of Richmond. Explore the prime residential area of Richmond Hill with its grand Victorian mansions and fashionable cottages. A cup of coffee at the conclusion of the walk is included in the price.

CONTACT National Trust (Vic) Bookings Office, 03 8663 7260

BOOKINGS essential

Roundabout the Parliamentary Precinct

WHERE: Meeting place: In front of the Princess Theatre, 163 Spring Street, Melbourne
Finishing point: In the vicinity of Spring Street

WHEN: Sunday 27 November 2011

TIME: 10.00am

COST: general: \$30
members: \$25

This interesting walking tour with Kenneth Park will literally circle Parliament House and the Parliamentary Precinct. Enjoy the beautiful sight of some of our city's best open spaces and gardens juxtaposed with the magnificent public buildings of the Victorian Government. A cup of coffee at the conclusion of the walk is included in the price.

CONTACT Bookings Office, 03 8663 7260
BOOKINGS essential

HERITAGE TRAVEL TALKS

The Romantic Rhine – a river of history

WHEN: Monday 15 August 2011

TIME: 9.45am

COST: general \$25
members (NT and RSL): \$20

VENUE: ANZAC House, 4 Collins Street, Melbourne

Journey into the heart of a continent as you follow the majestic Rhine River, one of the great highways and trading routes of European history. The longest river in Europe, the Rhine travels through six countries before reaching the North Sea. Along the way, stop to admire the romantic feudal castles, fascinating cities and quaint towns that have witnessed the course of history. A delicious morning tea is included in the price.

CONTACT Bookings Office, 03 8663 7260
BOOKINGS essential

Havana, a Cuban holiday

WHEN: Tuesday 13 September 2011

TIME: 9.45am

COST: general \$25
members (NT and RSL): \$20

VENUE: ANZAC House, 4 Collins Street, Melbourne

Enjoy a whirlwind trip to the exotic city of Havana. The graceful architectural heritage of this once-grand Capital is rich in colonial Spanish influence and mirrors its vibrant social history. Cuba's turbulent political history in the twentieth century has also left its mark on the City's landscape, with monumental public

buildings and tower blocks dotting the skyline. A delicious morning tea is included in the price.

CONTACT National Trust (Vic) Bookings Office, 03 8663 7260

BOOKINGS essential

The Grand Tour

WHEN: Monday 31 October 2011

TIME: 9.45am

COST: general \$25
members (NT and RSL): \$20

VENUE: ANZAC House, 4 Collins Street, Melbourne

The Grand Tour flourished in Europe from the 17th Century until the advent of large-scale rail travel in the 1840s. The Grand Tour was regarded by polite society as a rite of passage, allowing young men (and sometimes women) to benefit from exposure to the cultural inheritance of classical antiquity and the company of fashionable European society. Follow the route of the Grand Tour in this lecture, and enjoy the sights and places experienced by these early "tourists". A delicious morning tea is included in the price.

CONTACT Bookings Office, 03 8663 7260
BOOKINGS essential

Journey to Budapest

WHEN: Monday 28 November 2011

TIME: 9.45am

COST: general: \$25
members (NT and RSL): \$20

VENUE: ANZAC House, 4 Collins Street, Melbourne

Budapest is the capital and largest city in Hungary. It became a single entity, occupying both banks of the Danube River, in 1873. Regarded as one of the most beautiful cities in Europe, it boasts an extensive World Heritage area and a rich architectural legacy. Once part of the Ottoman Empire, Budapest is home to diverse and fascinating streetscapes that blend historic and modern styles.

CONTACT Bookings Office, 03 8663 7260
BOOKINGS essential

Recycle your old mobile phones, and help the Trust

Bring your old mobile phones in to Rippon Lea, Como, Polly Woodside or Tasma Terrace (the Trust's Head Office) and we'll not only recycle them for you

but the National Trust will make \$5 from each phone you donate that will go towards our conservation efforts.



Member offer

Il Tempo, a cosy, character-filled family run café offers divine coffee and delicious desserts including tiramisu, cheese cake and chocolate salami along with a full Italian menu. In a new partnership, Luca and his team wish to offer National Trust Members 30% off their total bill when visiting. Il Tempo is located at Shop 8/250 Flinders Street, which is the corner of Degraes Street, one of Melbourne's best laneway experiences.



Upon presentation of a National Trust Membership card, Trust Members will receive their discount. This deal is not available in conjunction with any other offer or promotion.

Renewal incentive price draw result

The winner of the prize for Brigalbit Homestead is Mr Wayne Morrow. Congratulations!

Partnership with iOM and the Trust

The National Trust is delighted to be working with iOM; a family owned Melbourne based outdoor advertising company.

The key to their success has been that they offer exceptional coverage across Melbourne Metropolitan markets and the key regional centers. Specialising in large format sites, they have developed a unique plant in Melbourne, enabling their clients both geographic targeting and broadcast reach.

iOM has supported many important not-for-profit and community organisations since its inception. The most current ongoing campaigns they are running are for Scope Victoria, the Victorian Opera and the Cancer Council of Victoria.

Look out for our Billboards.

www.iom.net.au

Win a hot air balloon flight over the Yarra Valley, with thanks to Global Ballooning

Global Ballooning offers sunrise hot air balloon flights over Melbourne City and Yarra Valley.



Ballooning over Melbourne is a truly unique experience as it is one of very few cities in the world that can be traversed in a hot air balloon. To enjoy the best of Victorian country side, ballooning over the Yarra Valley is one of Victoria's most spectacular winery regions. Their focus is on passenger comfort, safety and enjoyment.

For your chance to win a flight for two over the Yarra Valley with Global Ballooning valued at \$580, answer in 25 words or less the following question **"What is your favourite memory at a Victorian Trust property?"** Send your answer along with a photo to reception@natrtrust.com.au with your name, membership number, day-time phone number and postal address.

The winner will be published in the November *Victorian News*.

DAMP WALLS

- * Rising damp permanently cured by damp-course installation
- * University developed and tested
- * Over 10000 successful installations Australia-wide since 1981
- * 25 Year written guarantee
- * For free inspection, quote and advice

Phone: 9699 8233

Tech-Dry

Pty. Ltd.

Showroom: 177-179 Coventry Street,
South Melbourne

Booking form

Fill in form and send to the appropriate organiser WITH A STAMPED SELF-ADDRESSED ENVELOPE. All cheques payable to; National Trust (Victoria).

NO REFUNDS CAN BE GIVEN IF CANCELLATIONS ARE RECEIVED AFTER FINAL BOOKINGS ARE MADE.

Send to: Bookings, National Trust,
4 Parliament Place, MELBOURNE 3002
or to address provided with event details.

Please mark envelope with name of event.

COMMITTEE

FUNCTION

MEMBERSHIP NO.

NO. ATTENDING

NAME

ADDRESS

FURTHER DETAILS

TELEPHONE

CHEQUE/CREDIT CARD FOR: \$

--	--	--	--	--	--	--	--

--	--	--	--	--	--	--	--

☐ Mastercard ☐ Visa
☐ Amex ☐ Diners

NAME ON CARD

SIGNATURE

EXPIRY DATE



Classifieds

STAINED GLASS

Glass painting and leadlight. New commissions, restoration and reproduction work.

BRUCE HUTTON Almond Glassworks
Phone (03) 9658 5307
www.almond-glass.com

SILVER & METALWARE REPAIRS & REPLATING

- Have that small repair done or have your heirlooms fully restored by a silversmith with over 25 years experience in the antique restoration industry
- Services extend to all metals including brass, copper, spelter; also lacquering and antique finished.

Contact us now for a free appraisal and quotation
DUANE LUCAS (03) 9460 1123
11 Kurnai Avenue, Reservoir 3073
Email: heritagerepairs@primusononline.com.au



RICHARD CARTER

Slate craftsman, all roof plumbing inclusive of restoration, repairs and renewals. Period bullnose verandah design and construction. Reg. No. 25058.

Telephone: 0418 566 406 / 9482 4680

CHINA ROSE ANTIQUES

See our large range of Australian and imported antiques at
www.chinaroseantiques.com.au

CHIMNEY RESTORATIONS

By STEEPLE JACK JONES

Specialising in Victorian and Edwardian Chimney Restorations. Inclusive of all scaffolding and roof plumber (no 40647).

Telephone (03) 9543 6713

KOSNAR'S PICTURE FRAMING AND MIRRORS

Restoration of artworks, photographs picture frames & mirrors, including regilding.

Period Frames, Mirrors, Prints & Etchings.

488 Mt Alexander Road, Ascot Vale.
Telephone: 9370 5744
www.kosnar.com.au



SPECIALIST PAINTING
TUSCAN TRELLIS

One of Melbourne's leading specialists in painted finishes.

All periods, styles and projects
Metropolitan & Regional areas.

Please call for a folio viewing Rodney & Catherine Ashton.

0419 572 069 / 0419 883 443
or visit www.tuscantrellis.com.au

TUCKPOINTING, BRICKWORK, STONEMASONRY RESTORATION & REBUILDING

City & Guilds of London Institute trained craftsman.
Over 40 years experience.

PAUL BURTON
0408 343 502 or (03) 9789 7890

AUTHENTIC AGE

Advice on restoration, alteration and furnishing period houses and heritage buildings.

Telephone: (03) 9818 4324 or
www.authenticage.com.au

RAPID PAINTING SERVICES

Domestic ~ Interior & Exterior ~ 7-day Service
Restoration Advice ~ Heritage & Contemporary

Contact: Max Joffe - M: 0407 303 388 - Ph: 9563 6363
Email: rapidmax@netspace.net.au

melbourne • sydney • brisbane • canberra

Job: **Goods Shed No. 2**

Heritage Slate: **Trinity Heather**

Specification: **Slate to match original size and colour**

Architect: **Lovell Chen**

Builder: **Equiset**



your roofing slate specialist...

Tel **1300 884 334**

info@roofingslateworx.com.au
www.roofingslateworx.com.au



elegance • distinction • harmony



LICENSED ROOF PLUMBER 40647

ROOFING

SLATES, TILES, SPOUTINGS & DOWNPIPES BY

Steeple Jack Jones

EDWARDIAN, FEDERATION
AND VICTORIAN ROOF AND
CHIMNEY RESTORATIONS

0417 556 403
9543 6713

www.steeplejackjones.com

Advertisements listed in the *Victorian News* are paid advertisements.

Should you wish to advertise with the Trust, please contact media@nattrust.com.au or call 03 9656 9800