

VICTORIAN NEWS



NATIONAL TRUST 'Our heritage... yesterday,
today and tomorrow'

February 2011

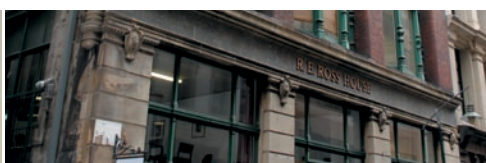
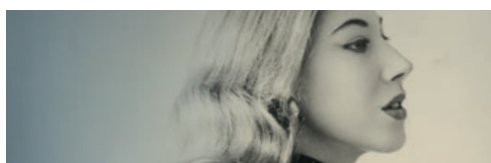
In 2011... **Green** is the new black



P3 | MANNEQUIN

P5 | CONSERVING OUR WAY TO SUSTAINABILITY

P12 | BRANCH WRAP-UP



Events in Brief: February 2011 to June 2011 (see pages 13 -18)

National Trust of Australia (Vic)

Tasma Terrace, 4 Parliament Place, East Melbourne, Victoria 3002

Telephone: (03) 9656 9800 Facsimile: (03) 9650 5397 Email: info@nattrust.com.au

www.nattrust.com.au

Message from the Chairman

The 2010 Annual General Meeting held on Saturday 20 November, 2010 was attended by 80 members, Board members and staff at the Melbourne Convention and Exhibition Centre (MCEC) overlooking the *Polly Woodside*.

MCEC kindly offered a room free of charge and our members were treated to state of the art facilities in the only 6 Star Green Star environmentally rated convention centre in the world.

I am thrilled to announce that in October 2011 we will be returning to MCEC for the National Trusts of Australia and ICOMOS' (International Council on Monuments and Sites) inaugural national conference. The Trust's role in the conference has been made possible by Commonwealth funding, and I am grateful for their support in this exciting venture.

Our partnership with ICOMOS is an example of the strategic links that are crucial for us in developing the broadest level of community and professional engagement and we will be developing these further in 2011.

In this issue we look at the 'greening' and sustainability issues of heritage



places. In November 2010 the Queensland Heritage Council coordinated a national forum to explore the issues surrounding the conservation of commercial heritage buildings and sustainability. The entire conference proceedings and case studies can be viewed on YouTube.

In Victoria we are fortunate to have world class expertise in this field available to heritage place managers and owners, and we have invited Jeff Robinson, Principal Sustainable Buildings Engineer at Aurecon to give an overview in this edition of some of the recent commercial projects at Aurecon

The redevelopment of Goods Shed No.2 North in Docklands is an example of sustainable reuse of a commercial building, and this remarkable project by VicUrban is perhaps the most exciting heritage projects of its kind ever undertaken in Victoria. It demonstrates that governments can lead by example with their building stock. Anchor tenants include the Building Commission and we look forward to working with them

in 2011 utilising Trust building stock to help develop new tools for assessment of Green Star ratings for heritage buildings. With these initiatives, 2011 looks certain to keep the Trust at the forefront of strategic heritage issues.

Finally, in 2010 we presented, for the first time, a membership stand at the Melbourne International Flower & Garden Show (MIFGS), and we will be there again in 2011 launching an iphone 'application' based on our Significant Tree Register. The linking of new technologies to our vast collection of heritage data has been made possible by funding from Heritage Victoria.

I look forward to seeing you at MIFGS 30 March-3 April for this exciting new development.

Dr Graeme L. Blackman OAM
Chairman
The National Trust of Australia (Vic)

Message from the CEO

A focus of this issue is the increasing range of activities members can take part in and enjoy at the Victorian Trust.

Our upcoming Heritage Festival beginning in April entitled 'From Steam to Surf', forms part of a national focus on International Day for Monuments and Sites (18 April) supported by Federal Government. The event includes many separate activities across Victoria.

We are indebted to all those organisations who are taking part, and to our Branches for their considerable efforts. We hope members will enjoy this growing festival and support some of the many different events that are listed in this magazine.

This issue of *Victorian News* highlights a wide range of events and exhibitions at the



Trust. Three theatrical performances since the New Year included the reintroduction of live performance at *Polly Woodside* with *Peter Pan*, and *Alice in Wonderland* at Rippon Lea House & Gardens. A more mature audience is anticipated for *Lady Chatterley's Lover* at Rippon Lea from 1 March, 2011.

I hope members will welcome more live performances at Trust properties in 2011. Also taking place at Rippon Lea is our Easter family event, sponsored this year with 5000 Easter eggs available for children!

March will also see the launch of Mannequin

at Como House & Garden. This major sponsored exhibition forms part of The L'Oréal Melbourne Fashion Festival (LMFF).

The exhibition focuses on Melbourne models from the 1950s and 1960s, and includes numerous unseen dresses and beautiful photographs from private collections.

Also in this issue is a focus on sustainability and buildings, including the reuse and upgrade of heritage structures. The Trust has been engaged with the Victorian Building Commission and others as we seek to promote the viable re-use of heritage buildings as a green and sustainable alternative to outright demolition.

I hope you enjoy this quarterly issue of *Victorian News* and are inspired to use your membership and get out and enjoy our heritage.

Martin Purslow
CEO
The National Trust of Australia (Vic)

Mannequin

Fashion modelling in the 1950s and 1960s

Mannequin is the third in a popular and critically acclaimed series of fashion exhibitions staged by the Trust at Como House & Garden (part of the L'Oréal Melbourne Fashion Festival Cultural Program).



MODEL DIANE MASTERS WEARING SUIT BY HALL LUDLOW ON LOCATION AT COMO. PHOTOGRAPHER ATHOL SHMITH, 1960 CA



MODEL DIANE MASTERS PHOTOGRAPHED BY ATHOL SHMITH, 1950 CA ©THE ESTATE OF ATHOL SHMITH, COURTESY KALLI ROLFE CONTEMPORARY ART



Mannequin is about a generation of professional models, such as Janice Wakely and Diane Masters who were photographed by the leading image makers of the time - Helmut Newton and Athol Shmith. These collaborations gave Melbourne fashion its own distinctive and influential style.

Together with the fashion press, advertising and local couturiers, modelling was part of an industry that was burgeoning with confidence in the 1950s and 1960s.

Told in their own words, *Mannequin* will showcase the careers of Melbourne's top models through their personal memorabilia, images and couture by designers, such as Hall Ludlow.

The exhibition will delve into the vast archive of photographs, newspaper and magazine spreads and the fashion that inspired them, held in the private collections of well-known career models.

The Trust is privileged to offer Melbourne's most elegant heritage estate for this important and popular fashion exhibition program. Como House will be transformed into an immersive visitor experience: a catwalk, a photographer's studio and a magazine.

A full public program will accompany the exhibition, from celebrating the vintage glamour of the 1950s and 1960s and elegant affairs to workshops designed to inspire and bring out your own style and beauty.

**A Fashion Exhibition at
Como House & Garden
18 March – 19 June, 2011**

Exhibition tickets:

FULL \$12
CONC/STUDENTS: \$9
UNDER 14: \$6.50
FAMILY: \$30 (2 adults and up to 4 children)

For further information, program details and bookings visit www.comohouse.com.au



Goods Shed No.2



GOODS SHED NORTH, BOURKE STREET ENTRANCE: PAUL ROSER, NT 2010

Completed in 1890 and originally 385m long, the railway goods shed was the workplace of more than 1500 people and the busiest on the Victorian Railways network.

In 2000, the expansion of the Docklands Precinct saw the removal of the seven central bays of the Good Shed to make way for the extension of Collins Street, thus splitting the shed in two: 'North' and 'South'.

In 2007 redevelopment work began by Equiset to Goods Shed North to convert



GOODS SHED NORTH INTERIOR, PHOTO CREDIT: JANUSZ MOLINSKI

the space into office use. Lovell Chen Pty Ltd was then commissioned to undertake the conservation and restoration works and BVN Architecture the reworked interiors.

A new entry building by architects Elenberg Fraser was also created to provide access from the Collins Street extension giving an overall 9700m² of office space and 1500m² of retail space.

The building is now occupied by VicUrban, the Building Commission, the Plumbing Industry Commission and retailers.

Goods Shed North achieved a 5 Star Green Star design rating, the first heritage building in Victoria and only the second in Australia to do so. To achieve the rating, a gas fired tri-generation plant, a chilled beam system, an underfloor displacement system, rainwater collection and treatment system and a greywater collection and treatment system were included as ESD initiatives.

The central services trench runs under the floor utilising original track space between platforms and is used as a horizontal distribution spine for services. A chilled beam system located at both the mezzanine level and ground floors provides the cooling and heating.

The \$60m development has won nine major awards in 2010 including Property Council of Australia, Planning Minister's Heritage Award, and Interior Design Association Awards. The southern section of the shed is due to be redeveloped in 2011.

'From steam to surf' – Trust Heritage Festival 2011

For many years the Trust used to coordinate a statewide heritage festival.

Some time ago the Festival ceased running and there has subsequently been no over-all coordination of a festival in the State.

The Geelong and Region Branch ran a very successful week-long event in April 2010, and our Ballarat Branch worked closely with the City of Ballarat for their Heritage Festival in May 2010. Inspired by their efforts and the successful National Trust festivals that continue to be run in Tasmania, New South Wales and Queensland, we believe it is time to resurrect a festival in Victoria.

Our aim is to celebrate all of Victoria's rich heritage: natural, cultural and indigenous and we particularly encourage you to participate in the regional and rural activities being offered around Victoria. The event will be based around the ICOMOS International Day for Monuments and Sites (18 April) the theme of which is water.

Working with our Branch network (which have close connections to the wider heritage-minded community) and a number of Councils, we have been encouraging partners from diverse heritage groups to register events.

Within the festival we have a Heritage Awards Program. These Awards recognise those in our community who have demonstrated excellence in retention,

restoration and reuse of heritage places. Our heritage includes buildings, gardens and objects, public and private places. Based on the awards scheme organised by the Geelong and Region Branch and Ballarat Branch with their respective Councils in 2010, the 2011 awards are based on a strong partnership between Branches and their local councils. Categories include recognition of specialist heritage trade skills, and sustainability and greening of a heritage place.

Visit www.natstrust.com.au/festival for more details of the Awards Program, nomination forms and the updated program of festival events.

Both articles by Paul Roser, Conservation Manager

Conserving our way to sustainability

By Natica Schmeder reporting on RMIT's conference *Greening the Existing Building Stock* 3-4 September, 2010

Jim Gard'ner, Executive Director of Heritage Victoria, presented preliminary findings from a research project into the nexus between heritage and sustainability.

Practical outcomes will include advice on how to most effectively retrofit a range of historic building types in a sensitive manner. Another important part of the research is the Life Cycle Assessment, which takes into account the energy required to construct a building (especially to manufacture the building materials), as well as the energy to operate it over its lifetime.

The modelling shows that installing medium-efficiency appliances (white goods, air-conditioning, heaters) and refurbishing an existing heritage house, for example a 1912 weatherboard villa in Geelong, means that over the next 90 years it will consume less energy – for construction and operation – than a new 5-star dwelling. And if that new 5-star dwelling is demolished in less than 90 years, then the heritage house is the clear winner for sustainability.

The City of Melbourne's Sustainability Manager, Krista Milne, announced their ambitious '1200 Buildings Program' to facilitate and provide finance for the retrofit of existing commercial buildings to improve their energy and water efficiency up to 4.5 NABERS (National Australian Built Environment Rating System). The program is primarily directed at post-1950s buildings (in part because earlier ones, of traditional construction, rely less on mechanical cooling systems and have smaller windows which decrease heating and cooling costs, therefore they are inherently more sustainable). Even so, among the 39 buildings signed up to the program thus far is **Ross House at 247 Flinders Lane**. This five-storey Romanesque Revival brick warehouse was built in 1899 for Frederick Sargood, a leading Melbourne merchant and politician and the original owner of the Trust's Rippon Lea property.

Apart from listening to presentations and panels, conference delegates had a chance



ROSS HOUSE, FLINDERS LANE. NAT TRUST 2010.

to visit some award-winning upgrades of heritage buildings on the second morning. These included RMIT's Francis Ormond Building, Goods Shed, Docklands (reported on elsewhere in this edition), and Westwyck Ecovillage – created around a Victorian-era primary school in West Brunswick.

The synchronicities between the green movement and heritage were readily apparent in some presentations, such as architect Tone Wheeler's 'Long Life, Loose Fit, Low Impact = the 3 L's for Sustainable Building'. In a nutshell, Tone urges that the 'armature' (structure and cladding) of buildings are chosen for a long life of 100 or more years, while the internal fitting (bathrooms and kitchens) are easily replaced over its life time ('loose fit'). These fittings should have low embodied energy ('low impact'), considering they will be disposed of more frequently. As many heritage buildings have already stood for 100 years, and have plenty of life in them yet, they are an excellent example of Tone's first 'L'. Owners of these buildings can take to heart the final two L's if refurbishing.

But this complementary approach to heritage was not espoused by all of the conference speakers, many of whom still see heritage protection as a stumbling block to their sustainability goals. For example, Andreas Sederof, Principle Designer of Sunpower Design argued that councils should permit the complete disassembly and later reconstruction of heritage facades to allow better construction access to inner city blocks when building energy-efficient rear extensions. The projects he discussed all involved the demolition of the majority of a heritage house and construction of a well-oriented, energy efficient rear addition. No mention was given to how the remaining original part of the house might be upgraded sensitively, making Heritage Victoria's current project so timely.

Natica Schmeder is a Senior Heritage Consultant at Context Pty Ltd, a Heritage Adviser and was recently appointed as Deputy Chair of the Trust's Buildings Committee.



Sustainability and heritage buildings

Jeff Robinson discusses how Ecological Sustainable Design (ESD) professionals utilise the positive design features of heritage buildings to improve their sustainable performance without detracting from their historic value.

To keep history alive, it is vital to find adaptive modern uses for heritage buildings that capitalise on their cultural value while improving their sustainability to ensure their continued relevance and attraction well into the 21st century.

Good sustainability practice is about reducing the ecological footprint by delivering robust improvements that are energy, water and waste efficient. Vernacular architecture often has good passive design aspects that can be optimised within the parameters of the heritage value. The challenge for design professionals to improve the environmental performance of the buildings while satisfying the approval bodies that intrinsic heritage features are being retained.

Increased interest in sustainable buildings in Australia and overseas

According to the City of Melbourne 1200 Building Program, if 1200 existing commercial buildings are retrofitted to improve energy performance by 38 percent the City of Melbourne would reduce its Greenhouse Emissions by 383,000 tonnes of CO₂-e per annum. To assist the industry, in 2003 the Green Star rating tool was launched to help assess the environmental impacts of buildings. Already more than 130 buildings and tenancies have achieved Green Star ratings.

Other motivations:

- Corporate tenants are demanding a quality indoor environment including access to daylight and views, avoidance of excessive noise and glare, fresh air and some control of local environments
- Corporate Social Responsible policies by companies to reduce their carbon emissions and water usage
- Increasing energy and water costs
- Government agencies are increasingly seeking minimum National Australian Built Environment Rating System (NABERS) and Green Star ratings for the buildings they occupy
- The recent introduction of the Commercial Building Disclosure Scheme will require a NABERS Energy rating to be disclosed for commercial buildings over 2000m²

Heritage Victoria commissioned a national project to assess and model various heritage building types and determine the savings in embodied energy in retaining a number of heritage buildings. A number of completed heritage building projects have demonstrated that heritage buildings can be successfully refurbished to achieve 5 and 6 Star Green Star ratings, without detracting from their heritage value.

Positive design features:

- Tall window deep reveals minimise solar heat gain while allowing sufficient daylight to light rooms, thus avoiding the need for artificial lighting to operate all of the time
- Extensive thermal mass. Historic buildings constructed from masonry and stone have large amounts of exposed thermal mass, which can be used to absorb heat gains from sun, lighting and computers which slows the temperature rising in the building
- Higher floor to ceiling heights and narrow floor depths with ready access to daylight through perimeter windows and light courts assist the ability for natural ventilation to be used to cross ventilate the building

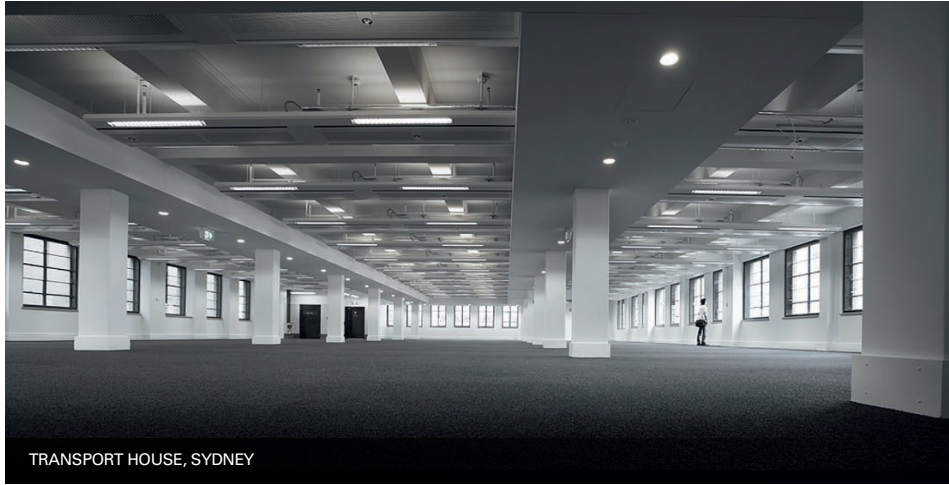
- The energy efficiency of the windows may be substantially improved by installing secondary or double glazing
- The external shading provided by traditional verandas and balconies can help keep out the hot midday sun in summer, while allowing the lower angle winter sun to warm the concrete floors.

Challenges and opportunities:

- Damaged windows and doors can be fixed and seals installed to reduce unwanted infiltration. 'Build tight, ventilate right' should be the motto of the designer and builder
- Insulation may be fitted to timber walls and roofs, while taking care to avoid moisture build up
- Improving the energy performance of the existing mechanical and electrical systems offers opportunities for energy performance improvements

Applying strategies:

- Replace existing incandescent lights with energy efficient T5 lamps controlled by automatic lighting control systems
- Replace inefficient air conditioning systems energy efficient high comfort, low energy under floor air conditioning systems, chilled ceilings and chilled beams or gas driven VRV air conditioning systems. These water and refrigerant based air conditioned systems are often easier to incorporate into heritage buildings as they require smaller risers
- Installation of variable speed pumps and fans with high efficiency motors can improve the energy performance of the existing systems
- Lifts can be retro-fitted with regenerative braking generating power as the descending lift brakes
- Other opportunities exist to reduce greenhouse emissions by installing solar panels and photovoltaic panels; measurement is



TRANSPORT HOUSE, SYDNEY

critical; installing smart meters on large energy and water systems is paramount to be able to measure and control

Recent case studies of historical buildings and refurbishment

Several Melbourne and Sydney projects have been sustainably refurbished successfully.

The Immigration Museum, Melbourne

This sustainable conversion of this historic customs house in Melbourne to become Melbourne's Immigration Museum utilised disused rainwater shafts to supply filtered and heated/cooled air supplied at low level using displacement grilles built into the columns at the perimeters of the rooms. A Computational Fluid Dynamic Analysis Program (CFD) was used to predict the air temperature and velocities in the occupied zone. In addition underfloor air distribution was used in the basement vault area, preserving the unique brick arches.

The Goods Shed North, Melbourne

The historic Goods Shed in Docklands was substantially refurbished by a Melbourne Developer and Construction company, Equiset, to house the new headquarters for VicUrban and the Victorian Building Commission. The refurbished design utilised positive features including a tall roof space which enabled a mezzanine floor to be installed thus achieving a high net lettable area ratio in the building. The area where the railway track used to run inside the building was utilised to reticulate services including an underfloor air conditioning system. The exposed structure on the upper floors allowed a chilled beam system to be installed between the roof trusses. The construction of the new entrance of Collins Street provided the opportunity to locate larger underground water tanks under the building and locate the cogeneration plant which generates power using gas. The building has achieved a 5 Green Star office design rating.

Transport House, Macquarie Street, Sydney

Transport House is a 1930s heritage listed building which needed a total refurbishment to convert it into a contemporary workplace. Because it was heritage listed, the building structure and the ceiling could not be demolished, also there were many internal walls which were classified as heritage. Innovative design solutions such as the use of multi-service chilled beams, which incorporate lighting and fire services

into the chilled beam, were successfully installed within the historical interiors. Secondary glazing was installed on the existing windows to reduce the heat gain and heat loss from the building. Extensive energy modelling was carried out to test the proposed design against the 4.5 Star NABERS energy target.

Preserving our heritage for the future

By using thoughtful design and advanced modelling techniques, heritage buildings can be refurbished to reduce their energy and water usage and waste generated whilst providing healthy and comfortable spaces for the building occupants.

The new Green Star tool that has been developed for public buildings will provide a means to benchmark the sustainability of public buildings which are to be refurbished in the next few years.

By Jeff Robinson, Sustainable Buildings Leader for Aurecon. Jeff has more than 23 years of experience in the design of environmental sustainable buildings, many of which have been heritage buildings.



HORSHAM HOUSE

Horsham House

Horsham House is proof that even heritage infrastructure has enormous sustainability gains on offer. Owners Chris Pittock and Dallas Scott Pittock have managed to cut water and electricity use by 64 percent and 28 percent respectively since purchasing 2007, while still maintaining the heritage guesthouse and garden. Chris and Dallas examined every aspect of the resource use within the restored Federation-era former surgeon's residence and practice.

The property's heritage significance presented challenges. Solar-powered electricity was ruled out by concerns for the property's appearance from the street and its aspect, while its visual appeal depended on maintaining the traditional water-demanding garden.

However, they used just one fifth of Melbourne best-practice for water use in motels and hotels; near 100 percent diversion of organic wastes to composting system and total reuse of laundry grey water for heritage garden.



Heritage advocacy update



ROBBIE BURNS STATUE IN CAMPERDOWN

Please visit www.nattrust.com.au/advocacy for more information on these items.

At time of writing there has been no decision by Heritage Victoria on the proposed tree removal and roundabout construction at the Bacchus Marsh Avenue of Honour.

Other matters we are advocating for include the proposed new bank in Maldon, the future of the Cerberus, appropriate treatment of the Keith Haring mural, Collingwood, the Robbie Burns Statue in Camperdown, the ICI Deer Park Explosives Factory and the Thomson River Horseshoe Bend Tunnel. Visit our website for the latest advocacy news.

Planning scheme amendments – the good, the bad and the ugly

The Trust routinely makes submissions on planning scheme amendments and our advocacy in 2011 will increasingly support Local Governments implementing heritage overlays in Victoria. In *Victorian News* (May 2010) we reported on our frustration at the lack of political will by Bayside Council to implement the *Interwar and postwar Heritage Study*. Below, Trust's Planner Judy

Mahoney reports on some other recent Local Government decisions.

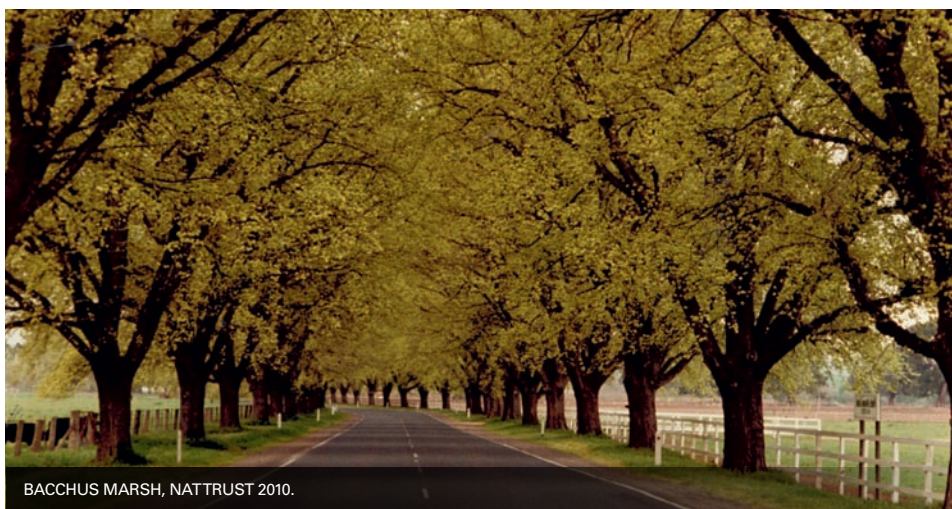
The good (1) – Following recent campaigning concerning heritage listings in the CBD, we are very pleased that the City of Melbourne is finally taking action. Firstly, they have commissioned a Heritage Strategy which will outline the projects needed in order to bring heritage listings up to date. This will be completed in 2011. Secondly, an urgent study on approximately 100 individual buildings in the CBD is underway. Most have been previously recommended for a heritage overlay, but some additional places have also been suggested by the Trust.

The good (2) – The Trust congratulates the City of Stonnington for its ongoing commitment to protecting its heritage places. A *Heritage Strategy Action Plan* was adopted by the Council in 2006. Following the preparation of a *Thematic Environmental History* for the city, it recognised the need to undertake further work to protect those places. As part of the Heritage Strategy implementation, the Council undertook a gap study to identify potential additional heritage precincts. It is now rolling out

should be below view lines from the opposite side of the street, and significant trees should be retained. The amendment also incorporates the 2007 gradings for every property in the city.

The good and the bad – An amendment prepared by City of Darebin has given interim protection to approximately 1000 properties comprising 108 individually significant places and 17 precincts including residential, industrial and commercial premises. These places were identified in the *Darebin Heritage Study* (2007). However, contrary to the Heritage Study and officer recommendations, Council did not support the application of the Heritage Overlay to any of the former Housing Commission of Victoria dwellings.

The bad – Due to resident opposition, two proposed heritage precincts in the City of Moonee Valley no longer have heritage protection under the Heritage Overlay. The small North Essendon precinct of post war houses, and the large Strathmore precinct of pre- and post-war villas and bungalows are now unprotected.



BACCHUS MARSH, NATTRUST 2010.

planning scheme amendments to provide permanent heritage protection for these precincts. As part of the strategy action plan, the Council is also investigating additional individual properties for inclusion into the heritage overlay and reviewing existing citations for properties already protected. Visit www.stonnington.vic.gov.au for information.

The good (3) – In October, 2010 City of Yarra Amendment C85 was approved by the Minister. Local policy now clearly states that contributory buildings should be retained, that new rear and upper additions

The ugly – The Moorabool Shire Council held a meeting on 17 November, 2010 to consider implementation of the long delayed *Bacchus Marsh Heritage Study*. Council resolved to split the amendment in a bizarre and complex manner, including resolving for residential properties 'to develop a policy on selection criteria for inclusion in the Heritage Overlay for amendment C06 to the Moorabool Planning Scheme for Private Residences'. It would have been simpler, as recommended by the Council's planning team, to refer all the objections to a Planning Panel in the usual manner!

Gilding the main entrance at Rippon Lea

the finishing touch to a fantastic restoration effort



BRUCE JACKSON GILDS MASTERFULLY

Bruce Jackson from Gold Reverre recently used gold and oil to gild the columns of the newly restored Porte Cochere at Rippon Lea.

Bruce explains the technique: "In essence, it's a matter of painting the sections of the Porte Cochere that will be gilded with an oil-based gold size. Then when the gold size, which is a type of tinted varnish, dries to the correct tack level, the gold leaf is then pressed onto it."

The gold that Bruce used was 23.5 carat and 98 percent pure, making it suitable for the outdoors. It was also so delicate it adhered easily. "Being unaffected by sun and weather, this gold doesn't need a clear coat or protective varnish. And it will also easily outlast any paint or other coating," he said.

Transfer gold is lightly pressed onto wax paper, making it easier to handle when working outside and in the wind. Bruce said that after gilding, the wax paper has remaining gold on it. "Having applied several hundred sheets of gold, I had plenty of leftover wax papers to give away to onlookers, included excited kiddies."

Join in the famous Easter egg hunt

Rippon Lea's annual Easter Fun Day will be in its fourth year in 2011.



Held on Easter Sunday 24 April, the day offers a range of children's art and craft activities, sporting games as well as boat rides, house tours, face painting and, of course, the Easter egg hunt!!

The hunt is central to the day's activities and this year will be bigger and better than ever with Heritage Fine Chocolates coming onboard as a much valued sponsor for the event. Heritage Fine Chocolates will be generously donating 5000 Easter Eggs for children of all ages to hunt for in the day's egg hunts.

Heritage Fine Chocolates is an Australian owned company that began in 1985 and has been operating for more than 25 years. The business is proud of its success through delivering consistent high quality products and creative packaging presentation which has driven significant growth in the markets for boxed chocolates, Easter and Christmas lines as well as corporate products. The Trust is proud to be associated with Heritage Fine Chocolates for this major family Easter event.

Support us on the social network wheel

We have launched new facebook pages to promote our work. Make sure to join facebook group pages: National Trust of Australia (Vic) and National Trust of Australia Advocacy.

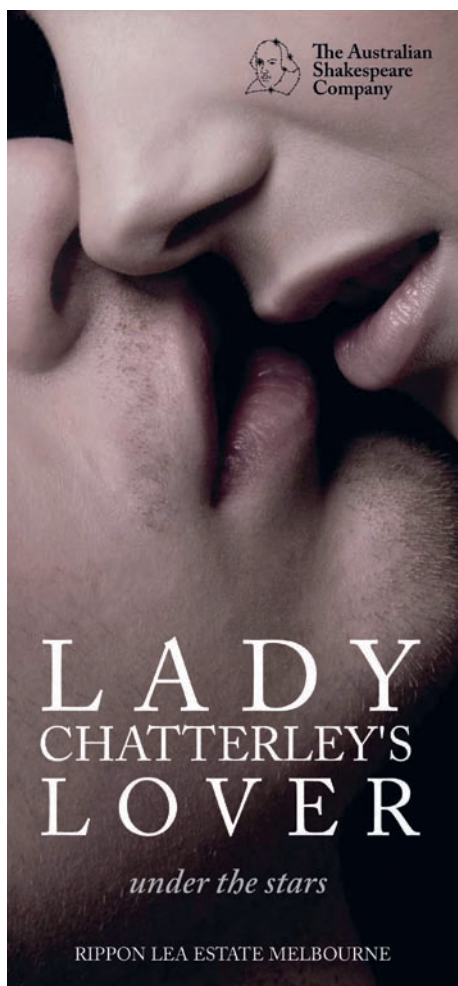


This is a page where heritage issues Victoria-wide can be raised and discussed online. The Trust encourage you all to visit our facebook page and join in the discussion on issues that are important to you. Facebook and other social media will form an increasing part of our advocacy profile and facebook offers the potential to reach new audiences and influence decision-makers. For

example, the Save Bacchus Marsh Avenue of Honour facebook page has 5000 followers and the Save Horsham Town Hall page has 1400 members. We also encourage you to follow us on twitter at www.twitter.com/NTAV for all the latest updates on advocacy and events.



D.H. Lawrence's scandalous novel comes to life at Rippon Lea



"We've got to live, no matter how many skies have fallen..."
D.H. Lawrence.

Lady Chatterley's Lover is a hymn to the flesh, to love. One of the most controversial novels in English literature, it is an erotically charged and psychologically powerful depiction of adult relationships.

The lover's tale skilfully depicts the adulterous affair between the sexually unfulfilled upper-class Connie and the gamekeeper Mellors, who works for her impotent, invalid husband Sir Clifford. This powerful depiction of the liaison between the two characters perfectly captures the struggle between the classes and the sexes.

Glenn Elston's new production, performed under the stars at Rippon Lea House & Gardens, takes us bodily into the world of Lawrence's characters as they embark on an illicit affair that brings to life their stifled existence. The beautiful gardens of Rippon Lea lend perfectly to the undercurrents of the natural and raw sensuality running through this masterful play.

Don't miss Glenn Elston's beautiful outdoor adaptation of Lawrence's timeless classic.

On February 1 – March 17, 2011, Monday to Thursday at 7pm at Rippon Lea House & Gardens, 192 Hotham Road, Elsternwick. Prices are adults \$40, concession \$35, groups 10+ \$35, under 18s \$25, booking fee may apply.

Call 1300 122 344 to book tickets, or book online at www.shakespeareaustralia.com.au, or Ticketmaster 136 100, or online at www.ticketmaster.com.au.

Gift vouchers call 1300 122 344 or purchase at www.shakespeareaustralia.com.au.

Obituary –

Margaret Florence Darling AM

Died 6th November 2010.



The National Trust was saddened by the death in November of Mrs Margaret Darling AM, Honorary Member and long-time Trust supporter.

Margaret Darling was a Foundation Member of the National Trust in Victoria, joining the new organisation in 1956, and serving it in various positions, including that of President, over subsequent years.

As Chairwoman of the National Trust Women's Committee, she took part in driving that committee's notable successes in fundraising, through initiatives such as the Trust Shop in Jackson Street, Toorak, Trust Baskets, and the memorable (and then novel) Open House Days at selected fine homes in private hands, usually attended by audiences in their thousands.

Mrs Darling served for some years as Chairman of the Trust's Fundraising, Activities and Membership Standing Committee (FAM), overseeing a period of membership growth and innovative projects and a varied program of member activities and events. She was also Chair of the Sponsor Donor Committee in the late 1980s.

Margaret Darling served as Victorian National Trust President from 1979 to 1982, and as Vice President from 1982 until 1987.

In 1989 she was unanimously elected as an Honorary Member of the National Trust of Australia (Victoria), an honour only awarded to those who have rendered the most distinguished service to the organisation over many years.

In 1991 Margaret Darling was created a Member of the Order of Australia (AM) in recognition of service to the National Trust.

She will be greatly missed by her many friends at the Trust. We extend our sincere condolences to her family.

Tree planting at Mooramong for Trevor Arthur

Mooramong Homestead near Skipton provided a wonderful setting for a memorial tree-planting on Saturday 9 October, 2010.

Mooramong looked beautiful and the gardens superb. The event, held to commemorate the contribution of Mr Trevor Arthur, Honorary Member of the Trust and leader in the field of nature conservation in Victoria, was attended by his family, Trust staff and members of the Trust's Significant Trees and Landscape Committees.



Our thanks goes to Mooramong staff and volunteers for hosting the day, especially on such a busy weekend with a major Property Open event the following day.

Military history comes alive at Barwon Park



On 9-10 April, the Military History Society Geelong and the Geelong Military Re-enactment Group are presenting a Military Living History weekend at Barwon Park.

Experience a spectacular presentation of Australian military history and memorabilia from the 1800s through to the Vietnam era in a format never before experienced by the Australian public.

This is a stimulating, interactive community event with a family oriented atmosphere set against a living backdrop of period encampments.

View battlefield re-enactments with blank firing and pyrotechnics depicting the Aussie assault on the Hindenburg Line (1917) and action in France as the allies liberate Europe (1944). And wander through period encampments set up in the grounds of the mansion portraying the Australian, British, the US and German forces engaged in France during WWI and WWII.

Profits from this event will be donated to Barwon Park, and to building restoration projects at the Winchelsea RSL WW1 Monument and St Thomas Church, Winchelsea.

Visit www.geelongmrg.com for details and program of events, or email: info@geelongmrg.com.

Elizabeth Austin: Life and legacies

This year was the 100th anniversary of the celebration of the life of a remarkable woman, Elizabeth Austin, pastoralist and philanthropist.

To honour her memory and her far reaching impact, a display on her life and legacies will be on show at Barwon Park, Winchelsea from March to July.

Visitors can view the newly restored Mansion built in 1871 for Elizabeth and her husband Thomas and see some of her possessions which are rarely on show. Objects such as her vibrant blue dress, her monogrammed silver tea set and silverware bequeathed by Elizabeth to the Austin Hospital which she founded, will all be on display.

"Among other objects, Elizabeth's widow's veil, her extraordinary tapestry works and the original Brougham



ELIZABETH AUSTIN'S SILVER TEAPOT

carriage that she owned can be viewed," said Trudi Toyne Property Manager at Barwon Park.

During her life at Barwon Park, Elizabeth Austin made many donations including

funds to establish the Hospital for Incurables (later known as the Austin Hospital) in Melbourne, the Austin Cottages in Geelong and substantial gifts to many local and state-wide charitable organisations.

Unfortunately at the height of their good fortune, Elizabeth's husband died and as a testament to her resilience and strength of character she continued to live at Barwon Park for the next 40 years until her death in 1910, aged 89 years.

Elizabeth donated funds to the Victorian Servants Training Institute in Melbourne for working class females to learn a trade. She also built a library in Geelong and 'any deserving organisation in the district never appealed to her in vain'.

During the latter part of her life Elizabeth, through her philanthropy distributed nearly her entire accumulation of wealth to benefit women, in particular those of limited means.

For more information: email barwon.park1@bigpond.com, or visit www.natstrust.com.au, or phone 5267 2209.



Branch wrap-up

Here is this month's run-down on some of the Trust Branch activity.

Ballarat Branch

The AGM on 9 November was followed by a dinner at Seymours (formerly the North Star Hotel c.1857). Also in November, members enjoyed a 'Weatherboard Tour' by the Learmonth Historical Society. Former shire offices and varied historical sites were viewed followed by a Sunday roast at 'The Stag'. After lunch, members travelled the wilds of Weatherboard viewing the bluestone walls, churches, and residences. Once again members were able to view private buildings not open to the public.

Most recently members were able to view and photograph the cast iron currently held by the Ballarat City Council. It is anticipated that volunteers will carry out further work labelling and photographing items and Council is looking to locate a more appropriate storage facility.

Geelong and Region Branch

Picturesque Barwon Heads Golf Clubhouse was the venue for Geelong and Region Branch's AGM in August. In September, members were treated to a tour of Geelong Football Club Brownlow Room, new Premiership Stand and Past Players Museum, all described by Honorary Club Historian Col Hutchinson. Other visits have been to significant pioneer graves at the classified Geelong Eastern Cemetery and to view Queenscliff's magnificent architecture. Progress has been made with Local Government planning schemes and the Branch has also made submissions and attended panel hearings. Reviews of Ashby and Newtown Heritage Studies have resulted in interim protection for hundreds of places. Surf Coast and Moorabool Shire have prepared Heritage Overlay Amendments and the Fyans/West Fyans Precinct Structure Plan has been adopted.

Bendigo Branch



DR GARY HILL, MIKE BUTCHER AND YOLA COLLINS FROM THE BENDIGO BRANCH. PHOTO CREDIT: DENNIS R. O'HOOY

At its AGM in November, the Branch farewelled Committee members and past Presidents Mike Butcher and Yola Collins. Incoming Branch President Dr Gary Hill thanked them for their untiring work over many years.

A successful outcome has been reached for the Peppercorn Trees at White Hills Cemetery after an initial application by the Bendigo Cemeteries Trust for the removal of 21 trees. After meetings, an agreement was reached for the removal of three trees and for the pruning of the rest in accordance with Australian Standard AS4373.

Casey Cardinia Branch

Its AGM was held on 29 November where Arthur Tonkin spoke about the history of paddle steamers of the Murray River. In December the Branch held its Volunteer Branch Christmas Party to honour volunteers who have assisted with Branch activities and initiatives.

Avenues of Honour in Casey and Cardinia have been a particular focus of the Branch since its launch in 2002. To draw attention to the heritage significance, status and



CASEY CARDINIA BRANCH PRESIDENT RUTH CROFTS AND MAYOR SHAR BALMES BESIDE ONE OF THE SMALLER SIGNS

condition of the Avenues, a separate Committee was established under the auspices of the Branch, chaired by Ian Good (Vice President). The Committee prepared a submission to Casey Council for a review, and staged upgrade, which gained the support of Cr Neil Lucas (when he was Mayor). This resulted in confirming Council's commitment to the restoration and ongoing maintenance of the Avenues. New signs will be placed at the both ends of the Avenue.

Inner West Branch

The Branch held various functions during the year including several walks in the historic Inner West. Submissions were made for the woollen mills site, Williamstown and the proposed C90 amendment to the Maribyrnong Planning Scheme. The Branch continues to work closely with Footscray Historical Society, Friends of Williamstown Botanic Gardens, and the B-24 restoration project. The Branch is also represented on Maribyrnong Council's Heritage Advisory Committee and the Advisory Committee of Altona's Truganina Explosives Reserve.

"We have contributed to policy advice on Footscray Railway Station precinct, relocation of war memorial plaques, the C90 amendment, and the approaching centenary of Footscray Gardens," said President, Hugh Basset.

Mornington Peninsula Branch

The Branch AGM, held on the 13 November, can only be described as a 'washout'. The rain was so heavy the scheduled walk through the Balcombe Estuary was cancelled but will be rescheduled April/May 2011. Office Bearers re-elected for the coming year: President Judy Walsh, Secretary Adrienne Herring and Treasurer Penny Carnaby. The President thanked the hard working Committee for their energetic input during 2010.

By Branch Presidents

The new Australian school curriculum

The new Australian Curriculum that has been approved by the Government includes subjects: History, English, Science and Mathematics.

The Trust has been for some time now working towards History becoming a mandatory subject from Prep to Year 10, and for the subject to have a focus on Australian history, heritage and local history.

With this success in many ways our own sites and educational programs will be favoured.

This decision will also have some impact in the future of our learning programs and strategy but remember History is just one component of the many disciplines our programs cover. Visit www.australiancurriculum.edu.au for more information.

For those interested in quick detail about Year level focus for History please read the brief synopses to the right:



History

The past in the present

The Year 2 curriculum provides a study of local history. Students explore, recognise and appreciate the history of their local area by examining remains of the past...

Community and remembrance

The Year 3 curriculum provides a study of identity and diversity in both a local and broader context. Moving from the heritage of their local area, students explore the historical features...

First contacts

The Year 4 curriculum introduces world history and the movement of peoples. Beginning with the history of Aboriginal and Torres Strait Islander peoples...

The Australian colonies

The Year 5 curriculum provides a study of colonial Australia in the 1800s. Students look at the founding of British colonies and the development of a colony...

Australia as a nation

The Year 6 curriculum moves from colonial Australia to the development of the country as a nation, particularly after 1900. Students explore the factors that led to Federation...

The ancient world

The Year 7 curriculum provides a study of history from the time of the earliest human communities to the end of the ancient period (approximately 60 000 BCE – c.650 CE)...

The ancient to the modern world

The Year 8 curriculum provides a study of history from the end of the ancient period to the beginning of the modern period (c.650 CE – c.1750)...

The making of the modern world

The Year 9 curriculum provides a study of the history of the making of the modern world from 1750 to 1918...

The modern world and Australia

The Year 10 curriculum provides a study of the history of the modern world and Australia from 1918 to the present, with an emphasis on Australia in its global context...

Upcoming Events **FEBRUARY 2011 – JUNE 2011**

Following on from a VERY successful 2010 event calendar across all Trust properties and Branches, comes this BUMPER events issue for the first quarter of 2011. It illustrates just how the Trust continues to be a hive of inspiring activity.

Visit www.natstrust.com.au/events for additional information on events. Entry fees apply for Trust members for special fundraising events at Trust properties. 'Members' prices listed are for Trust members only and some events require pre-bookings.

Please note: The event details below are correct at time of printing, but are subject to change. To confirm information, the Trust recommends, phoning properties or visiting www.natstrust.com.au, before purchasing tickets or attending the events.

Event listings by date

First Sunday of each month	Open House (Portable Iron Houses)
First Sunday of each month	Pirate Days (Polly Woodside)
Third Sunday of each month	Walking Tour (Portable Iron Houses)
Every Thursday during November to April	Storytime (Rippon Lea)
Every Tuesday from January 11	Storytime (Polly Woodside)
Tuesday 1 February – Saturday 12 March	Lady Chatterley's Lover (Rippon Lea)
Tuesday 8 February	A Visit to the Melbourne Costume Museum (Activities Committee)
Monday 14 February	Meeting and Luncheon (North East Women's Auxiliary)
Wednesday 16 February	Built On Gold (Activities Committee)
Sunday 20 February	Open Day: Taking Tea on the Verandah (Labassa)



Wednesday 23 February	Russian Tales (Mornington Peninsula Branch)
Sunday 27 February	Blue Lotus Watergarden (Activities Committee)
Sunday 27 February	The 21st Annual Teddy Bears Picnic (Rippon Lea)
Sunday 27 February	Discovering North Fitzroy (Walking Tours)
Monday 28 February	Outposts of Empire (Travel Talks)
Monday 28 February	Branch Meeting (Casey Cardinia Branch)
Sunday 6 March	Strathloddon and Yapeen Self Drive Tour and Afternoon Tea (Mount Alexander Branch)
Sunday 6 March	Barwon Park and The Heights Tour (Activities Committee)
Wednesday 9 March – Saturday 12 March	King Island Tour
Monday 14 March	Open Day (Gulf Station)
Friday 18 March – Sunday 19 June	Mannequin Exhibition (Como House)
Sunday 20 March	Queen's Parade, Fitzroy (Walking Tours)
Sunday 20 March	Delightful Dahlias (Labassa)
Monday 21 March	Orientalism (Travel Talks)
Thursday 24 March	ABC Southbank Centre Building Tours (Activities Committee)
Sunday 27 March	Picnic and Tour of Kyneton Botanic Gardens (Macedon Ranges Branch)
Saturday 2 April	A Day on French Island (Activities Committee)
Tuesday 5 April, Thursday 7 April, Friday 8 April, Saturday 9 April Sunday 10 April 2011	The Night of the Dingdong by Ralph Peterson' (Labassa)
Saturday 9 April & Sunday 10 April	Military History Comes Alive (Barwon Park)
Sunday 10 April	Moonee Ponds and more, Queens Park and Beyond (Walking Tours)
Monday 11 April	The Hebrides Heritage (Travel Talks)
Saturday 16 April – Sunday 17 April	Geelong Heritage Festival (Barwon Grange)
Saturday 16 April	Balcombe Estuary Walk (Mornington Peninsula Branch)
Sunday April 17	Open Day (Labassa)
Saturday 16 April	The Best of the Mornington Peninsula (Activities Committee)
Sunday 17 April	Melbourne Cemetery Full Moon (Walking Tours)
Tuesday 26 April	April at Torquay (Geelong and Region Branch)
Wednesday 27 April	'Welcome to our House' - Managing the Historic House Museum (LaTrobe's Cottage)
Saturday 30 April	Morning Tea in the former Castlemain Courthouse (Mount Alexander Branch)
Sunday 1 May	Main Coliban Channel Bus Trip (Mount Alexander branch)
Sunday May 15	Open Day (Labassa)
Sunday 15 May	Stroll Along Smith Street (Walking Tours)
Monday 23 May	Great World Cities – Istanbul Heritage (Travel Talks)
Tuesday 31 May	May at Osborne House (Geelong and Region Branch)
Tuesday 28 June	Regional Railway Remnants (Geelong and Region Branch)

National Trust Property Events

PORTABLE IRON HOUSES

399 Coventry Street, South Melbourne
(MEL Ref: 2J K2)

Open House

WHEN: First Sunday of each month

Delve into history and visit three prefabricated cottages on site constructed of iron and wood; imported from Britain during the Gold Rush years. A video gives an interesting insight into the importation of the portable buildings and there are interpretative panels to assist visitors.

CONTACT 03 9699 2172 or 03 9645 7517 for further information.

Private Guided Walks

WHEN: Third Sunday of each month

Knowledgeable volunteers conduct private and guided walks or lunches at the Portable Iron Houses with a guest speaker once a month.

CONTACT 03 9699 2172 or 03 9645 7517 for further information. BOOKINGS ESSENTIAL.

GULF STATION

1029 Melba Highway, Yarra Glen Victoria 3775

Open Day

WHEN: Monday 14 March 2011

TIME: 10am – 4pm

COST: Adult \$5, Child \$3, Family \$12, NT Members free

An opportunity to view the completed restoration works at Gulf Station. Enjoy

children's games, 19th century agriculture demonstrations, animals, tours and entertainment.

CONTACT Reception 03 9656 9800 for further information.

BARWON GRANGE

25 Fernleigh Street Newtown 3220

Geelong Heritage Festival

WHEN: Saturday 16 April – Sunday 17 April 2011

TIME: 12pm – 4pm

COST: Adult \$5, Concession \$4, Child \$3, Family \$12, Members free

Barwon Grange will be open for guided tours of the house which will include a small talk about the history of the Barwon River in relation to the use of the riverside.

The conservatory will feature a photographic display of significant heritage sites surrounding Barwon Grange.

CONTACT 03 5221 3906 for further information.

BARWON PARK

105 Inverleigh Road, Winchelsea

Military History Comes Alive at Barwon Park

WHEN: Saturday 9 April & Sunday 10 April 2011
TIME: 10am – 3pm Saturday,
10am – 3:30pm Sunday
COST: Adult \$10, Member Adult \$10,
Children under 12 free

Come and experience a spectacular presentation of Australian Military History and Memorabilia from the 1800s through to Vietnam.

Wander through period encampments portraying the forces engaged in France during WWI and WWII. Experience battlefield re-enactments with blank firing and pyrotechnics. Refreshments will be available for purchase.

CONTACT info@geelongmrg.com or www.geelongmrg.com

LABASSA

2 Manor Grove, North Caulfield

Open Day – Taking Tea on the Verandah

WHEN: Sunday 20 February 2011
TIME: 10:30am – 4:30pm
COST: Adult \$8, Child \$5.50, Concession
\$5.50, Family \$20, NT Members free

Members of the Australasian Shelley Collectors Club will provide a display of beautiful china tea ware made by Wileman & Company and Shelley Potteries in Staffordshire between the 1890s and 1966. Refreshments will be served throughout the day on the verandah, weather permitting.

CONTACT 03 9527 6295 or 03 9509 6596 for further information.

Delightful Dahlias

WHEN: Sunday 20 March 2011
TIME: 10:30am – 4:30pm
COST: Adult \$8, Concession \$5.50, Child
\$5.50, Family \$20, NT members free

Members of The National Dahlia Society will stage a magnificent display of dahlias. Arranged for the home or competition, all will inspire you. Advice from experts will be available throughout the day. An informal talk by the President of the Dahlia Society will run from 12-12.30pm. No bookings required. Please park in Orrong road.

CONTACT 03 9527 6295 or 03 9509 6596 for further information.

Open Day

WHEN: Sunday 17 April 2011
TIME: 10:30am – 4:30pm
COST: Adult \$8, Child \$5.50, Concession
\$5.50, Family \$20, NT Members free

Internal tours of the opulent interiors (11am and 2:45pm) as well as an external tour of architectural features (1pm). Self guided tours are also available.

CONTACT 03 9527 6295 or 03 9509 6596 for further information. No bookings required.

Adelphi Players Theatre Company present 'The Night of the Dingdong by Ralph Peterson'

WHEN: Tuesday 5 April, Thursday 7 April,
Friday 8 April, Saturday 9 April
Sunday 10 April 2011
TIME: Tuesday, Thursday and Friday 8pm,
Saturday 2pm and 8pm, Sunday 2pm.
COST: Adult \$15, Concession \$12,
Member \$12

The household of Colonel Beachamp, Commander of the Volunteer Rifles is flown into a flurry at the rumours of invasion by a Russian gun-boat. An Australian period comedy set in Adelaide in 1870 performed in the opulent 19 century mansion, Labassa.

CONTACT Barbara 03 9690 1593.
BOOKINGS ESSENTIAL.

Open Day

WHEN: Sunday 15 May 2011
TIME: 10:30am – 4:30pm
COST: Adult \$8, Child \$5.50, Concession
\$5.50, Family \$20, NT Members free.

Internal tours of the opulent interiors (11am and 2:45pm) as well as an external tour of architectural features (1pm). Self guided tours are also available.

CONTACT 03 9527 6295 or 03 9509 6596 for further information. No bookings required.

LA TROBE'S COTTAGE

Cnr Birdwood Avenue & Dallas Brooks Drive, Melbourne.

'Welcome to our House' - Managing the Historic House Museum

WHEN: Wednesday 27 April 2011
TIME: 7pm for 7.30pm
COST: \$7 (Friends of La Trobe's Cottage
members/ La Trobe Society members
free)

General meeting of the Friends of La Trobe's Cottage with guest speaker Dr Linda Young, Course Director, Cultural Heritage & Museum Studies, School of History, Heritage and Society, Deakin University. The event will be held at Domain House, next door to La Trobe's Cottage. Refreshments will be served. A warm welcome is extended to all Trust members and their friends.

CONTACT Helen Botham 03 9583 1114.

COMO HOUSE & GARDEN

Cnr Williams Rd & Lechlade Ave, South Yarra

Mannequin Exhibition

WHEN: Friday 18 March – Sunday 19 June 2011

A beautiful retrospective exhibition depicting fashion modeling in the 1950s and 1960s. The exhibition will create an immersive visitor experience where Como will be transformed into a photographer's studio, a catwalk and magazine.

CONTACT 03 9827 2500 for admission prices and further information.

RIPPON LEA HOUSE & GARDENS

192 Hotham Street, Elsternwick.

Storytime at Rippon Lea!

WHEN: Every Thursday during November 2010
to April 2011
TIME: 11am – 12pm
COST: Accompanying Adult \$7, Children over
3 years \$3 (Entry tickets are available
from Rippon Lea reception)

Partake in a fun and interactive storytelling adventure with a variety of tales, songs and activities for the little ones aged between approximately 3 and 7 years to enjoy. Stories are read outdoors under the Magic Storytime Tree. Mums and/or Dads are to be with child at all times and are most welcome to bring a picnic blanket and lunch to enjoy afterwards.

CONTACT 03 9523 6095 for further information.

Lady Chatterley's Lover

WHEN: Tuesday 1 February – Saturday 12
March 2011
TIME: Monday to Thursday at 7pm
COST: Adults \$40, Concession \$35, Groups 10+
\$35, Under 18s \$25

Under the stars set in the gardens at Rippon Lea, join us as we follow Lady Chatterley as she realises that her stifled marriage is no match for true equality and fulfilment with her lover Mellors. She breaks the biggest rule of all and falls in love with a man below her class – her husband's gamekeeper. Directed by Glenn Elston this story is a timeless classic.

CONTACT 03 9523 6095 or 1300 122 344 for further information. BOOKINGS ESSENTIAL.

The 21st Annual Teddy Bears Picnic!

WHEN: Sunday 27 February 2011
TIME: 10am – 4pm

If you go down to Rippon Lea Gardens, you're in for a big surprise, because that is the place where the teddy bears have their picnic! Bring some lunch and join the bears in fun and games for a day of holiday enjoyment for kids and families.

CONTACT 03 9523 9095 for further information.



Upcoming Events (continued)

POLLY WOODSIDE

2A Clarendon St, South Wharf, Southbank

Pirate Days at Polly Woodside

WHEN: First Sunday of every month
TIME: 10am – 4pm
COST: Regular entry prices apply,
NT members free

X marks the spot at Polly Woodside on the first Sunday of each month. Dress as a pirate and head to the ship to search for illusive treasure, join in pirate arts and crafts and games and have your face painted.

CONTACT Reception 03 9656 9800 for further information.

Storytime at Polly Woodside

WHEN: Every Tuesday from January 11 2011
TIME: 11am – 11:45am
COST: Regular entry prices apply,
NT members free

Fun and interactive storytelling with a wide variety of stories, songs and activities for little ones aged 2 – 7 years. Stories are read aboard Polly Woodside or, in inclement weather, down below deck!

CONTACT Reception 03 9656 9800 for further information

National Trust Events

WALKING TOURS

National Trust Heritage Walks

WHEN: By appointment, 7 days in advance.
COST: Adult \$33, Concession/Member \$27.50

Put your best foot forward and discover Melbourne's hidden treasures with Traditional, Commercial, Mercantile and Marvellous Melbourne City Heritage Walking Tours. Two hours walk plus morning or afternoon tea at the Park Hyatt.

CONTACT 03 8663 7228 or bookings@oldmelbournegaol.com.au. BOOKINGS ESSENTIAL.

Discovering North Fitzroy

WHEN: Sunday 27 February 2011
TIME: 10am
COST: \$25 Members, \$30 Non Members

Join Kenneth Park on a stroll through elegant North Fitzroy. View some of the splendid streetscapes and charming heritage buildings that the area offers and be prepared to see some true architectural gems.

CONTACT 03 8663 7260 for further information. BOOKINGS ESSENTIAL.

Queen's Parade, Fitzroy

WHEN: Sunday 20 March 2011
TIME: 10am
COST: \$25 Members, \$30 Non Members

This magnificent tree-lined boulevard has a marvellous history and is filled with a wide selection of heritage buildings and homes that bring to life the story of the growth of early Melbourne. A cup of coffee at the conclusion of the walk is included in the price.

CONTACT 03 8663 7260 during office hours. BOOKINGS ESSENTIAL.

Moonee Ponds and more, Queens Park and Beyond

WHEN: Sunday 10 April 2011
TIME: 10am
COST: \$25 Members, \$30 Non Members

Discover the heritage of Moonee Ponds and Essendon on an entertaining walk through Queens Park into the heart of Essendon. Admire historic streetscapes offering a fine selection of buildings from colonial and Edwardian times. A cup of coffee is included.

CONTACT 03 8663 7260 during office hours. BOOKINGS ESSENTIAL.

Melbourne Cemetery Full Moon Walking Tours

WHEN: Sunday 17 April 2011
TIME: Several tours start at 620pm with the last commencing at 8:50pm
COST: Adult \$24, Member Adult \$22, Concession \$22, Member Child \$15

Take part in a popular guided tour filled with stories of the many famous identities laid to rest in the intriguing Melbourne General Cemetery. Bring your own torch.

CONTACT Reception 03 9656 9800 BOOKINGS ESSENTIAL.

Stroll Along Smith Street, Collingwood

WHEN: Sunday 15 May 2011
TIME: 2pm
COST: \$25 Members, \$30 Non Members

Experience the history of Smith Street in this pleasant stroll with Kenneth Park. View the fine shopfronts, department stores, grand buildings and, tucked down the side streets, reminders of our manufacturing heritage long past. A cup of coffee is included.

CONTACT 03 8663 7260 during office hours. BOOKINGS ESSENTIAL.

TravelTalks - Outposts of Empire

WHEN: Monday 28 February 2011
TIME: 9:45am
COST: \$20 Members, \$25 Non Members

Many in the modern era would be surprised by the existence of so many outposts of empire around the world. This beautiful illustrated lecture surveys some of the fascinating remnants of the imperial order. Not to be missed. A delicious morning tea is included.

CONTACT 03 8663 7260 during office hours. BOOKINGS ESSENTIAL.

TravelTalks - Orientalism

WHEN: Monday 21 March 2011
TIME: 9:45am
COST: \$20 Members \$25 Non Members

This lecture explores the relationship between the Orient and Europe as reflected in the creative output of those who were inspired by tales and objects of the exotic lands of the East. A delicious morning tea is included.

CONTACT 03 8663 7260 during office hours. BOOKINGS ESSENTIAL.

Heritage TravelTalks – The Hebrides

WHEN: Monday 11 April 2011
TIME: 9:45am
COST: \$20 Members \$25 Non Members

The Hebrides form a widespread and diverse archipelago off the west coast of Scotland. This beautiful group of islands has a fascinating history of human occupation dating back to the Mesolithic era and the culture of the Islanders has been influenced by successive waves of Celtic, Norse and English-speaking people. A delicious morning tea is included.

CONTACT 03 8663 7260 during office hours. BOOKINGS ESSENTIAL.

Heritage Travel Talks – Great World Cities – Istanbul

WHEN: Monday 23 May 2011

TIME: 9:45am

COST: \$20 Members \$25 Non Members

Founded as Byzantium and later called Constantinople, Istanbul is one of the most extraordinary cities of the world, boasting an incredible history. The lecture will introduce you to many of the major historic sites such as the Topkapi Palace, the Grand Bazaar, Hagia Sophia and many more. A delicious morning tea is included.

CONTACT 03 8663 7260 during office hours.
BOOKINGS ESSENTIAL.

Branch Events

CASEY CARDINIA BRANCH

Casey Cardinia Branch (first meeting for 2011)

WHEN: Monday 28 February 2011

TIME: 7:30pm

Members are invited to attend the 1st meeting of the Casey Cardinia Branch with a guest speaker for 2011. To be held in the Function Room of our Heritage Info Centre, Pioneers Park, in Berwick. The meeting will be followed by supper. Please advise if you are attending for catering purposes.

CONTACT Rosalind or Ruth 9707 1518.

GEELONG AND REGION BRANCH

Barwon and the Bay - Water Heritage Bus Tours

WHEN: Saturday 16 April 2011

TIME: Two tours each taking 2 hours

First tour 11am-1pm

Second tour 2-4pm

COST: Adults \$5

Bus tours of significant places associated with the heritage of water. The tours include many of Geelong's early heritage sites and structures associated with the waters of the Barwon River and Corio Bay, encompassing indigenous places; river crossings; quarrying; water supply and sewerage; maritime, recreational and industrial usage. At some sites passengers can alight from the bus and take a short walk for closer viewing. Commentary provided and tour takes approximately two hours.

CONTACT: Jenny Yeats 5255 2097 or 0418 348 164. Bookings required by: Wednesday 13 April.

April at Torquay

WHEN: Tuesday 26 April 2011

TIME: 11am – 2:30pm

COST: Meal Cost

Guided walking tour hosted by the knowledgeable Torquay Historical Society followed by a meeting and meal at the Torquay Hotel.

CONTACT Liz Bates 03 52431986. RSVP required by April 22.

May at Osborne House

WHEN: Tuesday 31 May 2011

TIME: 7pm – 9:30pm

COST: Gold coin donation

Osborne House located on Swinburne Street, North Geelong has been significantly refurbished recently with some of the original 1857 homestead rooms totally transformed. Embark on a tour of Osborne House followed by a meeting and supper.

CONTACT Liz Bates 03 52431986.

Regional Railway Remnants

WHEN: Tuesday 28 June 2011

TIME: 10am – 2pm

COST: \$2 donation to Birregurra Railway Society

Meeting at Marshall Railway Station on Marshalltown Road in Marshall, take a self driven tour of the rail remnants and history between Marshall and Birregurra hosted by Michael Menzies (President of Geelong and South Western Rail Heritage Society).

The tour is then followed by a meeting and a BYO lunch at Birregurra Railway Station.

CONTACT Liz Bates 03 52431986.

MOUNT ALEXANDER BRANCH

Strathloddon and Yapeen Self Drive Tour and Afternoon Tea

WHEN: Sunday 6 March 2011

TIME: 1:30pm – 5pm

COST: \$10 donation

Max Kaye, local historian and owner of Strathloddon will lead us on a tour involving Strathloddon with its wonderful views, interesting rock/lava outflows, an archaeological site and aboriginal scar tree, the mid 19th century stone house built by 'Boss' Aberdeen, the Mopoke Water Wheel and various other Yapeen sites. Afternoon tea will be provided.

CONTACT Brian Tresidder 03 5472 1108 or 0429 450 055. **BOOKINGS ESSENTIAL** by Sunday 27 February.

Morning Tea in the former Castlemaine Courthouse as part of the 2011 Heritage Festival

WHEN: Saturday 30 April 2011

TIME: Morning Tea times provided on booking

COST: Admission to Courthouse free,
Morning Tea \$6

As part of the 2011 Heritage Festival, a morning tea will be hosted by the Castlemaine Historical Society in the former Castlemaine Courthouse. This will be an opportunity to look over this significant building in the historically important Goldsmith Crescent area, and view a panel display of 'water themed' material from the Historical Society's collection.

CONTACT Brian Tresidder 03 5472 1108 or 0429 450 055. **BOOKINGS ESSENTIAL** by Sunday 17 April 2011.

Main Coliban Channel Bus Trip as part of the 2011 Heritage Festival

WHEN: Sunday 1 May 2011

TIME: All day

COST: Published in Mount Alexander Branch Newsletter closer to event

The Coliban Scheme was an amazing feat of 19th century engineering taking water from the Great Dividing Range and providing Bendigo and Castlemaine with a reliable supply. The Mount Alexander Branch will conduct a full day guided bus tour with stops at points of interest along the main Coliban Channel between Malmsbury and Bendigo. Numbers will be limited to 40 to 45, bring your own lunch.

CONTACT Brian Tresidder 03 5472 1108 or 0429 450 055. **BOOKINGS ESSENTIAL** by Sunday 17 April 2011.

MORNINGTON PENINSULA BRANCH

Russian Tales

WHEN: Wednesday 23 February 2011

TIME: 10:30am – 12pm

COST: Adult \$10, Concession \$8, Member Adult \$8, Member Concession \$8

A visual presentation in the theatre and talk by Steve Yorke, Briars Team Leader. He will highlight his recent experiences at a conservation conference in the wilds of Russia which reveal Russia beyond Red Square. Morning tea will be served.

CONTACT Elizabeth 03 9580 9617. **BOOKINGS ESSENTIAL.**

Balcombe Estuary Walk

WHEN: Saturday 16 April 2011

TIME: 10am – 12pm

Boardwalk through Melaleuca landscape from The Briars to Mt Martha village. Starting at The Information Centre on The Briars Nepean Highway, Mt Martha, partake in the easy walk of 50 minutes each way. Refreshments will be available at the village. No charge applies.

CONTACT Elizabeth 03 9580 9617 for further information. No bookings required.



Upcoming Events (continued)

MACEDON RANGES BRANCH

Picnic and Tour of Kyneton Botanic Gardens and nearby Heritage Home

WHEN: Sunday 27 March 2011
TIME: 12:30pm – 3:30pm
COST: Adult \$15, Member Adult \$10

Bring your own picnic lunch and take part in a guided tour around the beautiful Kyneton Botanic Gardens at Mollison Street Kyneton as well as a nearby heritage home followed by afternoon tea.

CONTACT Phyllis 0417 059 476 for bookings and further information.

NORTH EAST WOMEN'S AUXILIARY

February Meeting and Luncheon

WHEN: Monday 14 February 2011
TIME: 10am – early afternoon
COST: Adult \$30

Partake in Morning Tea followed by short meeting at 10.30am which is then followed by a delicious 2-course luncheon and tour of the winery at 'Tuileries' Restaurant and Accommodation, 13-35 Drummond St, Rutherglen.

CONTACT Charney Hunt 03 5744 1671.
BOOKINGS ESSENTIAL by Friday 4 February.

ACTIVITIES COMMITTEE

A Visit to the Melbourne Costume Museum

WHEN: Tuesday 8 February 2011
TIME: 10:45 – 12pm
COST: Adult \$15, Child \$5, Member Adult \$10, Member Child \$5

Meet at the museum for an indepth history of the collection by owners Bryan and Loel Thomson. Tour this fascinating collection of Australian costumes dating from 1788. Join us for lunch at the Old England Hotel where the food is great. Lunch is at own expense, there are stairs, but very easy ones.

CONTACT Margaret Walker 03 9836 2783.
BOOKINGS ESSENTIAL Send booking form, cheque or credit card details with stamped self addressed envelope to Margaret Walker, 1/8 Winmalee Road, Balwyn, 3103 before 25 January 2011.

Built On Gold

WHEN: Wednesday 16 February 2011
TIME: 2pm – 3:30pm
COST: Adult \$15, Child \$7.50, Member Adult \$10, Member Child \$7.00

Visit the Old Treasury Building in Spring Street, Melbourne which is considered one of the finest 19th century buildings in Australia. Discover stories, documents and artefacts from the State's archives including information on the West Gate Bridge collapse 40 years on.

CONTACT Lesley Barnes 03 9735 5772.
BOOKINGS ESSENTIAL. Send booking form, cheque or credit card details and stamped, self addressed envelope to Lesley Barnes, 21 Winnetka Drive, Lilydale, 3140 before 9th February 2011.

Blue Lotus Watergarden

WHEN: Sunday 27 February 2011
TIME: 11:15am
COST: Adult \$33, Child \$28, Member Adult \$28, Member Child \$28

This unique 14-acre display water garden of lotus and waterlilies, just past the Yarra Junction Township is a place where Monet would love to paint and is best visited at this time of year. A tour and talk has been arranged to fully appreciate this magic place. Wheelchair friendly with a large car park, this self drive event makes it an ideal place for everyone to enjoy. A light luncheon is also included in the cost.

CONTACT Lesley Barnes 03 9735 5772.
BOOKINGS ESSENTIAL. Send booking form, cheque or credit card details and stamped, self addressed envelope to Lesley Barnes, 21 Winnetka Drive, Lilydale, 3140 before 17 February 2011.

Barwon Park and The Heights Tour

WHEN: Sunday 6 March 2011
TIME: 10am – 4:30pm
COST: Adult \$57, Child \$47, Member Adult \$52, Member Child \$47

Travel by train or self drive to Geelong Railway Station, to board a coach to travel around Geelong before arriving at magnificent Trust property, Barwon Park at Winchelsea. After the tour and a scrumptious lunch travel to another Trust property, The Heights and tour the property and extensive old world garden. Afternoon tea will be served before returning to Geelong Railway Station. Cost includes coach, morning and afternoon tea, lunch and tours.

CONTACT Lesley Barnes 03 9735 5772.
BOOKINGS ESSENTIAL Send booking form, cheque or credit card details and stamped, self addressed envelope to Lesley Barnes, 21 Winnetka Drive, Lilydale, 3140 before 19 February 2011.

ABC Southbank Centre Building Tours

WHEN: Thursday 24 March 2011
TIME: Tour 1: 9:15am – 11am or Tour 2: 10:45am – 12pm
COST: Adult \$15, Child \$5, Member Adult \$10, Member Child \$5

Venture behind the scenes on a one hour guided tour of the ABC centre in a unique opportunity to see how it all goes to air. Places are limited and early booking is advised.

CONTACT Lesley Barnes 03 9735 5772.
BOOKINGS ESSENTIAL. Send booking form, cheque or credit card details and stamped, self addressed envelope to Lesley Barnes, 21 Winnetka Drive, Lilydale, 3140 before 17th February 2011.

A Day on French Island

WHEN: Saturday 2 April 2011
TIME: 10am – 4:30pm
COST: Adult \$71.00, Concession \$66.00, Child \$55.00, Member Adult \$66, Member Child \$55

Self drive or take the train to Stony Point to board the Ferry for French Island. There enjoy a conducted tour of the Island to view koalas in the wild, local birds, organic farm practices and learn about the unique history of the island. A buffet luncheon of local organic produce will be served in the historic McLeod Prison.

CONTACT Lesley Barnes 03 9735 5772.
BOOKINGS ESSENTIAL. Send booking form, cheque or credit card details and stamped, self addressed envelope to Lesley Barnes, 21 Winnetka Drive, Lilydale, 3140.

The Best of the Mornington Peninsula

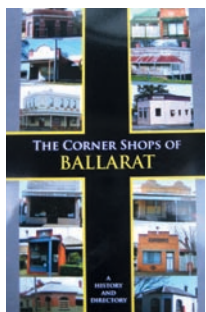
WHEN: Saturday 16 April 2011
TIME: 11:30am – 3pm
COST: Adult \$40, Child \$30, Member Adult \$35, Member Child \$30

This is a self drive event. Visit 'Briarswood' Cottage, a tudor style B & B for a tour and then the 'Heronswood' Estate and garden located in Dromana for a conducted garden tour followed by a scrumptious lunch. 'Heronswood' is home to the 'Diggers Club' where there will be an opportunity to buy heritage seeds. Maps with application. Dietary requests with booking.

CONTACT Lesley Barnes 03 9735 5772.
BOOKINGS ESSENTIAL. Send booking form, cheque or credit card details and stamped, self addressed envelope to Lesley Barnes, 21 Winnetka Drive, Lilydale, 3140 before 8th April 2011

Review:

The Ballarat Branch of the Trust, *The Corner Shops of Ballarat: A History and Directory*



Cost of the book is \$15, or \$20 including postage and handling. Published 2009, book is also available

from the Ballarat Branch, contact the Secretary Marion Blythman on 5333 5163.

Many of us fondly remember our favourite corner shops. This useful publication has identified Ballarat's numerous existing corner shops such as those operated by grocers, butchers, bakers, barbers and dressmakers and has charted their changing use over time.

King Island getaway

Courtesy of O'Shannessy Tours, a discounted, four-day tour is offered to Trust members only. Appreciate the stunning scenery and enjoy the wildlife, spectacular sunsets and the delectable cheeses when you visit King Island from 9-12 March 2011. The trip covers all of the major tourist attractions on the island including the cheese factory, wild life reserves, a calcified forest, Currie Lighthouse, Sea Elephant Bay, fishing villages, the kelp factory and Yellow Rock Beach and its shipwrecks.

The original store was a small business which began in the gold rush era when many traders used horses and carts to carry goods to residents. Later shops were established, not necessarily on a corner, but usually with a residence attached. These were frequently operated by a family. In more recent years we have seen the decline of corner shops through the introduction of supermarkets, while we have lost personal contact with many storekeepers.

Notable examples of these shops include the current post office at 628 Drummond Street South, which was a grocery store for many decades; the clothing business at 301 Eyre Street, which was formerly the Beaufort Hotel in the 1860s-70s and a grocery store for around a century after that; and the antique shop at 211 Lydiard Street North, whose previous use included bootmaking and repairing businesses for many years.

We are confident that this enterprising booklet, produced by the hard working members of the Ballarat Branch, will bring back happy memories of the corner shop. We hope that the publication will inspire residents and lovers of history in other localities to emulate their efforts.

**By Celestina Sagazio,
Senior Historian at the Trust.**



All meals are provided, inclusive of airfares and accommodation.

Please visit our website for more information on membership at the Trust. For further information contact Rosemary Henderson on 9656 9830.

Heritage Accommodation program

New B&Bs to sample



Lochinver Farm Homestead, located at Carisbrook, Victoria, is a fine 1860s Scottish inspired bluestone colonial five bedroom residence featuring original furniture with modern comforts.

Another property to visit is a three bedroom **Blue Wren Cottage**, and **Creek Cottage**, one studio bedroom. Surrounded by 1000 acres of traditional farming property, it is a perfect base for families and groups, or a couple's getaway in the Goldfields.

Renewal incentive price draw result

The winner of the prize for a night at B&B at Silver Birch, Ballarat, is Mrs Margaret Gunn of North Melbourne. Congratulations!

Directory

CHINA ROSE ANTIQUES

See our large range of Australian and imported antiques at www.chinaroseantiques.com.au

Booking form

Fill in form and send to the appropriate organiser WITH A STAMPED SELF-ADDRESSED ENVELOPE. All cheques payable to National Trust (Victoria).

NO REFUNDS CAN BE GIVEN IF CANCELLATIONS ARE RECEIVED AFTER FINAL BOOKINGS ARE MADE.

Send to: Bookings, National Trust,
4 Parliament Place, MELBOURNE 3002
or to address provided with event details.

Please mark envelope with name of event.

COMMITTEE

FUNCTION

MEMBERSHIP NO.

NO. ATTENDING

NAME

ADDRESS

FURTHER DETAILS

TELEPHONE

CHEQUE/CREDIT CARD FOR: \$

--	--	--	--	--	--	--	--

--	--	--	--	--	--	--	--

<input type="checkbox"/> Mastercard	<input type="checkbox"/> Visa
<input type="checkbox"/> Amex	<input type="checkbox"/> Diners

NAME ON CARD

SIGNATURE

EXPIRY DATE



Directory

STAINED GLASS

Glass painting and leadlight. New commissions, restoration and reproduction work.

BRUCE HUTTON Almond Glassworks
Phone: (03) 9686 0303
www.almond-glass.com

SILVER & METALWARE REPAIRS & REPLATING

- Have that small repair done or have your heirlooms fully restored by a silversmith with over 25 years experience in the antique restoration industry
- Services extend to all metals including brass, copper, spelter; also lacquering and antique finished.

Contact us now for a free appraisal and quotation
DUANE LUCAS (03) 9460 1123
11 Kurnai Avenue, Reservoir 3073
Email: heritagerepairs@primusonline.com.au



CHIMNEY RESTORATIONS

By STEEPLE JACK JONES

Specialising in Victorian and Edwardian Chimney Restorations. Inclusive of all scaffolding and roof plumber (no 40647).

Telephone (03) 9543 6713

RICHARD CARTER

Slate craftsman, all roof plumbing inclusive of restoration, repairs and renewals. Period bullnose verandah design and construction. Reg. No. 25058.

Telephone: 0418 566 406 / 9482 4680

RESTORATION

STEEPLE JACK JONES

- * SLATE CRAFTSMAN
- * TERRACOTTA SPECIALIST
- * ROOF PLUMBER no 40647

Restorer of Mooramong; Steam Packet Inn; Como; Rippon Lea; Mulberry Hill; many churches.

Telephone (03) 9543 6713

KOSNAR'S PICTURE FRAMING AND MIRRORS

Restoration of artworks, photographs, picture frames including regilding. Period Frames, Prints, Mirrors & Etchings.

488 Mt Alexander Road, Ascot Vale.
Telephone: 9370 5744

TUCKPOINTING, BRICKWORK, STONEMASONRY RESTORATION & REBUILDING

City & Guilds of London Institute trained craftsman. Over 40 years experience.

PAUL BURTON
0408 343 502 or (03) 9789 7890



SPECIALIST PAINTING TUSCAN TRELLIS

One of Melbourne's leading specialists in painted finishes.

All periods, styles and projects
Metropolitan & Regional areas.
Please call for a folio viewing Rodney & Catherine Ashton.

0419 572 069 / 0419 883 443
or visit www.tuscantrellis.com.au

RAPID PAINTING SERVICES

Domestic ~ Interior & Exterior ~ 7-day Service
Restoration Advice ~ Heritage & Contemporary

Contact: Max Joffe - M: 0407 303 388 - Ph: 9563 6363
Email: rapidmax@netspace.net.au

TESSELATED RESTORATION

Preserve your original Hall, Verandar, or Path.

PETER IVES 9801 2930 for professional craftsmanship and courteous service.

DAMP WALLS

- * Rising damp permanently cured by damp-course installation
- * University developed and tested
- * Over 10000 successful installations Australia-wide since 1981
- * 25 Year written guarantee
- * For free inspection, quote and advice

Phone: 9699 8233

Tech-Dry

Pty. Ltd.

Showroom: 177-179 Coventry Street,
South Melbourne

AUTHENTIC AGE

Advice on restoration, alteration and furnishing period houses and heritage buildings.

Telephone: (03) 9818 4324 or
www.authenticage.com.au



LICENSED ROOF PLUMBER 40647

ROOFING

SLATES, TILES, SPOUTINGS & DOWNPIPES BY

Steeple Jack Jones

EDWARDIAN, FEDERATION
AND VICTORIAN ROOF AND
CHIMNEY RESTORATIONS

0417 556 403
9543 6713

www.steeplejackjones.com