

# VICTORIAN NEWS



**NATIONAL TRUST** 'Our heritage... yesterday,  
today and tomorrow'

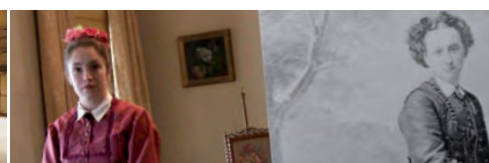
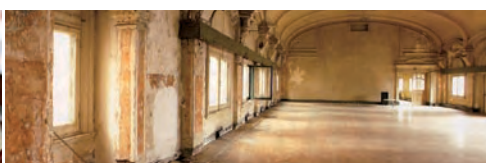
November 2010



**P3** | THE NEW POLLY WOODSIDE

**P4** | STATE ELECTION TIME

**P9** | MRS SARGOOD COMES TO SCHOOL



**Events in Brief:** October 2010 to February 2011 (see pages 14 -18)

National Trust of Australia (Vic)

Tasma Terrace, 4 Parliament Place, East Melbourne, Victoria 3002

Telephone: (03) 9656 9800 Facsimile: (03) 9650 5397 Email: [info@nattrust.com.au](mailto:info@nattrust.com.au)

[www.nattrust.com.au](http://www.nattrust.com.au)



## Message from the Chairman

Following the election of Julie Gillard as Prime Minister leading a minority Government with Independents and Green support, the Trust is seeking engagement across all political parties to promote better treatment of cultural heritage and improvements in funding for conservation activity and in planning and development control processes.

We acknowledge with thanks that the Federal Government has supported the Trust movement through the Stimulus Package in 2009/10 with more than \$12m in grant aid, along with a refocused annual grant support for national projects amounting to nearly \$1m per annum. This support has significantly enhanced many of our sites and increased our community activity, for example, our support for heritage festivals this year. In 2010/11 we will work to ensure that the Federal Government continues to be engaged and supportive of our cultural



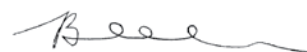
THE NEWLY RESTORED GROTTA AT RIPPON LEA

activity. We applaud the efforts of our Branches and property staff in rebuilding our Heritage Festival, and are delighted that in 2011 we will see the biggest festival in many years across Victoria with the theme: 'Heritage of Water'. The Victorian Festival is part of a National Trust Heritage Festival in partnership with many other groups and organisations.

The State and its agencies have also been generous in their support of the *Polly Woodside* Maritime site redevelopment and in their funding of a number of Trust initiatives this year. As attention in Victoria now turns to the State election, we are

advocating for ongoing support of our cultural heritage and improvements at a State level, highlighting our planning system that presents challenges to many in our community including to the Planning profession, and our Local Councils. Improvements already in place include the establishment of the Central City Standing Advisory Committee (CCSAC) in May 2010 immediately following the debacle that was the Windsor Hotel planning process: "To provide for greater and more transparent involvement by the City of Melbourne in the decision-making process for developments where the Minister is the responsible authority," (Source: *Terms of reference* CCSAC). The Trust is actively lobbying for greater transparency and involvement in the development debate as pressure mounts for change to meet the challenges that our State faces, not to mention the rapidly growing population pressure. Our active pursuit of the Windsor Hotel decision through to the Supreme Court illustrates our ongoing commitment to pursue transparency in the planning decision making process.

Thank you for your support as members in 2010 and best wishes for Christmas and the New Year from the Trust.



**Dr Graeme L. Blackman OAM**  
**Chairman**  
**The National Trust of Australia (Vic)**

## Message from the CEO

I would like to acknowledge what a tremendous year it has been with regards to the multitude of restoration works that have been undertaken across our heritage properties.

Thank you to all the hundreds of volunteers, our great Staff, our Branches and the many contractors and companies that have worked with us in a very productive year.

I would encourage all members to get out and enjoy all the work we have been engaged in at our sites. Make sure you visit the *Polly Woodside* from December and help her celebrate a 125th birthday relaunch, to view the new exhibition gallery and to watch the newly commissioned introductory film in our new theatre. The storyline for the new film is based on the original diary of the ship's carpenter George Adams and his first voyage aboard the *Polly Woodside* from England to New Zealand in 1914.



NEW VISITOR'S CENTRE AT MULBERRY HILL

Our AGM on Saturday 20 November will give some members a sneak preview of what the public will get to see onsite.

As we approach the State election, in this issue we pose some questions (see p4) to the main political parties and we will be publishing any responses at [www.natrust.com.au](http://www.natrust.com.au). We would like to see fresh political commitments to planning reform and heritage controls in the wake of the gradual dilution of protection afforded by the once cast iron Heritage Act, along with more certainty on the future of the W-Class trams and the restoration and community reuse of Flinders Street Station. After 25 years of false dawns, we welcome City of Melbourne's renewed focus on the completion of a CBD heritage review, that

has already seen the saving of the 'Little Lon' Terraces following our intervention, and we will see the significance of many more buildings recognised as a result.

Finally, I am delighted to announce that we will be hosting a joint national conference with ICOMOS in Melbourne on 28-30 October, 2011, again thanks in part to generous support from the Federal Government and sponsors. Full details will be available on our website in early 2011.

I am extremely proud of what we have done with *Polly Woodside* and all of our properties, it signals a new era at the Trust, building upon the foundations they have been laid since our Strategic Plan, launched in 2009. I am also excited to see more of this important conservation continued through to 2011; works that will appropriately preserve and maintain our assets for now and future generations.

I thank you for your ongoing support and I wish you a prosperous 2011.



**Martin Purslow**  
**CEO**  
**The National Trust of Australia (Vic)**

# Polly Woodside and Trust properties

Summer 2010, *Polly Woodside* will be relaunched to the public following a robust investment by The National Trust of Australia (Vic) and partners to read the full article please see the national *Trust News* magazine (page 5).



POLLYWOODSIDE. CREDIT GREG NOAKES 29 AUGUST, 2010

And for those members that want a sneak preview of *Polly Woodside* before she opens in December, the Trust's Annual General Meeting will be held onsite, Saturday 20 November. If you can't attend the AGM, then help this historic ship celebrate its 125th birthday relaunch in December. Make sure to keep an eye out at [www.pollywoodside.com.au](http://www.pollywoodside.com.au) for a full 2011 calendar of events aboard one of Melbourne's top tourist attractions. We look forward to seeing you take part as the original crew on the *Polly Woodside*.

Also this summer, following the restoration works currently being undertaken at many of our other properties as part of the Australian Government Stimulus Package (featured on the cover of this issue and in the *Property update* of *Victorian News* Aug 2010), the Trust would like to invite members, friends and families to visit, view and enjoy all of these improvements. The restoration of the Port Cochere and Grotto at Rippon Lea, the delicate plastering works at Barwon Park, the newly restored Housekeeper's Cottage at Mulberry Hill, and the \$750k worth of works made to Gulf Station's farm homestead and associated structures are well worth a peruse. Visit [www.natstrust.com.au/places\\_to\\_visit](http://www.natstrust.com.au/places_to_visit) for information and opening times.



POLLYWOODSIDE. CREDIT GREG NOAKES 29 AUGUST, 2010



POLLYWOODSIDE. CREDIT GREG NOAKES 29 AUGUST, 2010







FLINDERS STREET BALLROOM IN ITS CURRENT STATE. NATTRUST 2010

# State election time

In the lead up to the State election on 27 November we will be posing the following questions to the main political parties. Visit our website [www.nattrust.com.au](http://www.nattrust.com.au) to view responses.

## 1. Heritage under pressure

With the surge of large scale and high density projects facilitated by policies such as Melbourne 2030 and Melbourne@5million our heritage is under increased pressure. Intense development along tram corridors, which would include most of Melbourne's historic shopping strips, is also under consideration. Heritage is generally a minor consideration, even where heritage overlays exist. There have been no cultural heritage surveys of land proposed for major development, for example, recent freeways and transport corridors, and land slated for development in the Urban Growth Boundary extension.

*What measures will you adopt for protecting heritage places in these areas?*

## 2. Central City Standing Advisory Committee

Earlier this year the Minister for Planning provided for greater involvement by the City of Melbourne in the decision-making process for developments greater than 25,000 square metres, by creating a joint City of Melbourne and State Government advisory body. We welcome the creation of this committee, however, it is still only an advisory committee.

*Will you make this body a Responsible Authority?*

## 3. Heritage Overlay Review

The Heritage Overlay Review (2007) commissioned by the Minister for Planning made a series of important but mostly yet-to-be acted-upon recommendations for reform of the heritage overlay system in Victoria.

*Will you implement any of those recommendations?*

## 4. The role of Heritage Victoria

The purpose of the *Heritage Act* is to protect and conserve places of cultural heritage significance. There is public disquiet that the 'reasonable and economic use' clause of the *Heritage Act*, which has been in place since 1974, has compromised the purpose of the Act. Unlike the planning system, there are no third party appeal rights for permits.

*Would you support third party appeal rights for the Heritage Act? And would you consider making Heritage Victoria a listing authority, and a referral authority for permits, as in South Australia and like English Heritage?*

## 5. Sustainability for heritage places

By 2010 Rippon Lea, the first National Trust property in Australia on the National Heritage List, will be self-sufficient for water and power, and very close to carbon-neutral.

*What specific measures will you implement to assist the greening of public and private heritage properties?*

## 6. Funding for private and community heritage places

Public funding for conservation is scarce. Funding for private places is through modest grants available from the Heritage Council, with slightly more for community places through Heritage Victoria. In the UK the National Lottery has committed over £3b (\$6b)

since 1997 to community heritage projects, aiding revitalisation of whole communities. In the US, tax credits are available for commercial projects that rehabilitate heritage places, and are often the difference between preservation and demolition. Owners of places on the Victoria Heritage Register can apply for land-tax relief and rate relief but the process is difficult, and few have benefited.

*What new initiatives will you adopt?*

## 7. Flinders Street Station

Flinders Street Station was voted a heritage icon by *Herald Sun* readers in 2007. In this, its 100th year, one-third of the station building stands neglected and unused. In 2005 the cost of repairs to restore and reuse these areas was estimated at \$10m.

*What will be your commitment to the restoration and community reuse of this State heritage asset?*

## 8. W-Class trams

There are now approximately 48 W-Class trams in working order, with about 25 on the street at any one time. Their removal has been proposed by 2012 with just the 12 tourist trams left on the City Circle. By then there will be more W-Class trams operating in overseas cities than in Melbourne. The State Government is yet to decide what will happen to the W-Class fleet once it is finally taken off the commuter routes. The Trust has proposed a new tourist focused circuit that uses restored W-Class trams connecting major attractions around Melbourne.

*What commitment will you make to a viable future for the W-Class trams?*

## 9. Returning of heritage land

Rippon Lea was added to the National Heritage List in 2006. In the 1860s it was a self sufficient estate of 17ha with pleasure gardens, ornamental lake, greenhouses, orchards, vegetable gardens, service areas, including stables, bushland areas and menagerie. In the 1950s the Commonwealth compulsorily acquired some of the estate for the ABC studios, with the surviving estate eventually bequeathed to the Trust for all Victorians to enjoy.

The Commonwealth is proposing to dispose of the ABC land. Returning a proportion of that land back to the Estate would give the Trust the opportunity to recreate the lost gardens to link in with the recently restored Grotto. The former 'Chase' would also be reinstated to its full extent, thus re-opening an entrance to the estate that disappeared long ago.

*What commitment will you provide to assisting the Trust reclaiming a portion of the lost estate land from the Commonwealth?*

# Strategic direction for advocacy

Our Strategic Plan calls for the Trust to effectively communicate our mission and advocacy policy to stakeholders, and seek diverse partnerships to improve cultural heritage outcomes.

Our initiatives include evaluation of models for advocacy, influencing key planning, policy and development of stakeholders and advocacy plans that maximise staff, Branch and supporter expertise.

Former State Minister for Planning Mary Delahunty recently published her memoirs and her descriptions of meetings with community groups makes fascinating reading: "One such group, spawned by an uncompromising desire to preserve their comfortable suburb in aspic, tried to manage the media and minister adroitly."

While Delahunty was not referring to the Trust, we are clear that 'preserving' individual places, suburbs, towns and cities 'in aspic' is not part of our plan. We are an international organisation that has existed since the 1890s and if everything had been 'pickled in aspic' since then, we would have been denied a wonderful 20th century inheritance.

The Trust will continue to promote the positive benefits of sustainable integration of investment in our cultural heritage of all periods to all Governments.

Our advocacy role seeks to set the conservation agenda in Victoria. For us to

obtain better long term outcomes, it clearly requires far more than short-term letter writing, attending meetings with developers, appeals to VCAT and rallies on the steps of Parliament. Our agenda pursues proper heritage protection, but it also celebrates and promotes the sustainability and reuse of heritage places. We have started discussions with the Building Commission and Green Buildings Council Australia on how the Trust, through its stewardship, can promote the 'greening' of heritage places, and advocates for the reuse of heritage places.

Despite finite advocacy resources, the Trust must have a broad strategic agenda, one for the celebration of cultural, indigenous and natural values; for creative reuse as part of regeneration; for the 'greening' of heritage places and for the development of a training mechanism, perhaps linked to Government heritage grants for conservation works, to ensure training opportunities for traditional trades skills.

When it comes to getting an advocacy message across to all decision makers in Government, the Trust operates in an extremely competitive environment.

Political advocacy groups such as Getup! demonstrate the power of social media as an advocacy tool. In the past we have added enews, e-campaigns, social media and online donation tools to our communication tools. As the Trust prepares for the State election we encourage our members to join the debate, let us know your views through our social media including Facebook. Visit [www.natrust.com.au](http://www.natrust.com.au) for more information.

It is important that the Trust's mission speaks to rural and regional Victoria as well as Melbourne. The Trust's network of 15 Branches represents a large number of our constituents, but many members do not have Branch representation, so we are looking to expand. Several of our Branches have seats on municipal Heritage Advisory Committees, including Ballarat, Bendigo and the Inner West Branches, and these provide a vital link to the assessment work undertaken by Councils.

## Good Shed No.2

In 2011, working with the Green Building Council of Australia, we will be looking at making the Trust's property portfolio a test-bed for developing assessment tools for green ratings recognition.

Good Shed No.2 has been an outstanding example of the opportunity for commercially viable reuse of heritage places. VicUrban as developers of Docklands, and the Building Commission as anchor tenant are to be congratulated on seizing the opportunity to bring to life a building that had sat redundant for more than 20 years. The achievement of a 5 star green star rating for the office fitout demonstrates the potential of places like these to be part of the ongoing building stock in a sustainable way.

**Paul Roser, Conservation Manager**

## Local Government

Despite some gaps more than 100,000 places in Victoria are now protected with a Heritage Overlay. It is important for the Trust to support the work of Local Governments striving to implement heritage overlays. The recent failure, reported in *Victorian News* May 2010, by Bayside Council to implement controls for the protection of interwar and post-war suburbs was an opportunity lost. The Trust consequently has to spend time and resources fighting for unprotected places as threats arise. We will continue to support Shires and Cities to overcome local opposition and ensure that comprehensive studies are implemented. There is a vital role for the Trust's Volunteer Expert Committees to support advocacy by regularly attending planning panels.

## Community engagement



CONSERVATION MANAGER, PAUL ROSER SPEAKS AT THE FIRST MELBOURNE HERITAGE ACTION MEETING HELD AT THE TASMA TERRACE, JULY 2010. A. DIMECH

To promote heritage in the inner Melbourne area we have auspiced a new group, Melbourne Heritage Action. The foundation meeting was held at Tasma Terrace in July, and the group has a mandate for engaging a younger audience in conservation matters. This initiative is a new and exciting model in grass roots advocacy for the Trust. Visit [www.melbourneheritage.org.au](http://www.melbourneheritage.org.au) for more information.





# A comprehensive and inclusive heritage

The National Trust of Australia (Vic) acknowledges the special relationship of Aboriginal people with country and recognises prior ownership and continuing associations, including that of the post-contact period.

The National Heritage List has recently provided much impetus for the integration of all heritage values – indigenous, historical and natural. The Department of Environment, Water, Heritage and the Arts program Indigenous Australians Caring for Country recognises that: “Indigenous Australians are key partners with us in managing Australia’s environment and cultural heritage.”

In Victoria the recent publication of Victoria’s *Framework of Historical Themes* by the Heritage Council provides an abstract framework for recognising and appreciating the diverse Aboriginal, historical and natural histories of Victoria’s heritage places. There are similar frameworks available elsewhere in other states and territories.

In common with other Trusts, the Victorian Trust owns, or manages a number of places that now demand a comprehensive interpretation of natural, historical and indigenous values. To date these places have presented a one-sided ‘post-contact’ presentation. As a manager of many heritage places, the Trust movement is well placed to ensure that interpretation and stories are as complete as possible.

More broadly we have the opportunity to become an active interpreter of sites. We recently cooperated with the Winda Mara Aboriginal Corporation, traditional owners of land including the Budj Bim National Heritage Landscape at Lake Condah in Victoria’s south-west, to interpret the Bessie Belle Sheepwashes near Port Fairy for visitors on the International Day of Monuments and Sites. The washes have strong affinity in land use terms to traditional indigenous aquaculture and embracing the advantages of the natural environment to husbandry. Heritage Victoria has funded recent essential conservation works to repair collapsed races and walls. Together with the Trust in Western



BESSIEBELLE SHEEPWASHES. NATTRUST AUG, 2010

Australia, we have initiated a program to provide a model of Aboriginal engagement, reconciliation and interpretation for all Trusts in Australia. Trust staff will engage with Aboriginal Heritage Councils or their equivalent in other states and territories to determine the significance of our sites and opportunities for development and interpretation with indigenous partners.

The Trust’s own property, Endeavour Fern Gully at Red Hill on the Mornington Peninsula contains 17 hectares of remnant bush. Historically, the original vegetation at this site aids our understanding of the plant resources available to the Boonwurrung people, the original owners of the land, and illustrates the type of environment that European settlers encountered on arriving in the area in the 1830s. Endeavour Fern Gully is a clear example of the opportunity for the Trust to move back beyond normal interpretations of European settlement into a clearer understanding of indigenous land use, and presentation of the community’s story of their land and how it was impacted by white settlement. While the development of the site has a long way to go, and the recent creation of a Boardwalk by the Mornington Peninsula Branch of the Trust is only a small first step, we have already begun meeting the local Aboriginal community and will continue to discuss how the site will be interpreted, and managed in the long term.

**Paul Roser, Conservation Manager**

## Festival and awards

This year we took the first steps to re-establishing a statewide Heritage Festival.

Working with ICOMOS, the event was based around the International Day of Monuments & Sites on 18 April celebrating the theme of agriculture. Many events were coordinated by our Branches and properties, including a family day at Gulf Station. Other Trust states and territories have been successful with ongoing festivals and we too are seeking to rebuild the event in Victoria. The Trust has already started planning with our Branches for a larger festival program for April/May 2011 with ICOMOS theme of the heritage of water. The Ballarat and Geelong & Region Branches have also developed innovative annual awards programs with their respective councils. The inaugural Ballarat Heritage Awards earlier this year

recognised the challenges and enormous potential of Ballarat’s exceptional heritage. We have already established a working group to build on the success of those awards and will rollout a model for all our Branches to work with their local Councils and their heritage advisers on promoting excellence in heritage outcomes. This concept will ideally lead to an overall state award and possibly a later national award.



BALLARAT BRANCH PRESIDENT, DIANNE GOW SPEAKS AT THE INAUGURAL BALLARAT HERITAGE AWARDS (APRIL 2010)



# Heritage advocacy update



PEPPERCORN TREES (*SCHINUS MOLLE*) PLANTED 1882, WHITE HILLS CEMETERY, BENDIGO PHOTO CREDIT: PAUL ROSER (JULY 2010)

Please visit [www.nattrust.com.au/advocacy](http://www.nattrust.com.au/advocacy) for more information on these items.

We would like to know what heritage issues matters to our members in both the short and long term, and encourage you to contact us by email at [media@nattrust.com.au](mailto:media@nattrust.com.au), or by joining the debate on our Facebook page National Trust of Australia (Vic) Advocacy, and by following the Trust's advocacy campaigns at [www.twitter.com/NTAV](https://www.twitter.com/NTAV).

## Proposed community bank, 79 High Street, Maldon

The Mt Alexander Branch of the Trust has been very actively lobbying Councillors of Mt Alexander Shire to obtain a better outcome on the design proposal for a new community bank in High Street, Maldon. The Heritage Overlay in Maldon triggers an assessment against the objectives of the *Maldon Design Guidelines*, and our objection was that the proposal does not meet the guidelines, in particular the use of oxidized concrete walls. The Council's decision of 22 June 2010 was to issue a notice of decision to approve

the application. The Trust lodged an appeal with VCAT on 23 July and is working with other local groups including 'Save Maldon Streetscapes' for a better outcome. A hearing is unlikely until early 2011.

## Peppercorns Trees, Bendigo

We recently objected to a permit application to Heritage Victoria by the White Hills Cemetery Trust for the removal of 21 peppercorn trees. Trust staff and our Bendigo Branch have attended several interested parties meetings in Bendigo for roundtable discussions with the Cemetery trustees: City of Greater Bendigo Council, Heritage Victoria and Friends of the Cemetery. The meetings have been very positive and further work on assessment of the trees' health has been undertaken. A substantial reduction in the number of trees removed is likely and further work to develop a master plan for plantings is underway.

## W-Class Trams

The Trust has gained recent and extensive publicity on its proposed new tourist circuit that would use restored W-Class trams to connect major attractions around Melbourne.

Go to [www.nattrust.com.au](http://www.nattrust.com.au) to view the full proposal. Other groups and individuals have put forward their own variations to our proposal but together we continue to pressurise the Government into harnessing the W-Class tram a visitor and tourist attraction to promote Melbourne. While the W-Class has a guaranteed future on the City Circle route, we are urging the Government not to lose sight of the potential to expand this type of service in the future. If the city is ever to link the central CBD with other key sites, it is imperative that Government preserves the remaining fleet of 40 or so operational W-Class trams in some capacity.

## Deer Park Explosives Complex

The Trust recently nominated the Deer Park Explosives Complex on Ballarat Road for the Victorian Heritage Register. The sites comprises nearly 150-hectares of land with structures where explosives were produced to serve the mining industry, and which led to the formation of a strong domestic chemical industry in Australia. In the early 20th century Orica is seeking to clean up the site and demolish a number of historic structures. Heritage Victoria has recommended that the entire site



# Heritage advocacy update (continued)



not be added to the register. In its recent recommendation, Heritage Victoria states that although the Deer Park Explosives Complex may have historical importance at a state level, the remaining fabric no longer demonstrates the history or the main aspects of the significance of the site. Brimbank Council has given a permit for demolition of some buildings but required retention of some of the more significant structures.

## Mornington Pier

Parks Victoria met with the Trust and the Mornington Peninsula Branch to explain the need for \$3.5 million of works on the Mornington Pier. It is proposed that the middle part of the pier have a new concrete deck and solid wave shields placed to protect it from waves on both its seaward and inner sides. These are likely to be visually unsympathetic and the Trust has requested that the wave shield on the inner, most visible side be recessed as far as possible. Parks Victoria engineers are assessing possible modifications. These works are independent of the controversial large marina also proposed within the Mornington Harbour.

## Dredger No.21, Morwell

No.21 Dredger was ordered by the State Electricity Commission of Victoria (SECV) in 1950 and commenced operation in the Morwell open cut in October 1955. The opening of the Morwell open cut in 1949 marked the beginning of the significant expansion of the activities of the SEC during the post-war growth and industrial expansion of Victoria. Friends of the No.21 Dredger has now taken over its ownership and the surrounding land, which were gifted by Powerworks together with \$30,000 to assist with the maintenance costs. Powerworks withdrew its objection to the inclusion of the dredger on the Victorian Heritage Register and it was duly added in July. These decisions also open up 'not for profit' avenues of funding for the restoration of the dredger. However, Government assistance will be needed for maintenance and public liability costs.

## Hamer Hall

Extensive alterations are proposed to the former Concert Hall, now known as Hamer Hall. The Arts Centre is on the Victorian Heritage Register. Trust staff were given an

inspection and copies of the plans. Changes include entirely new lobbies at the St. Kilda Road level and the river level below.

The new deck to the riverside is another major change, but this is only subject to approval by the Minister's office as a development on public land that is not covered by the extent of designation of the Victorian Heritage Register. The Trust's submission expressed concern with the vertical feature of the new deck, and with the level of alteration to the John Truscott designed interiors, but felt further comment was difficult since there were no details as to what aesthetic the altered sections were to employ.

Latest reports are that the extent of the alterations has been reduced. Heritage Victoria has now issued a permit for the works, despite the exact form of the new structures not yet being determined. The Hall has closed, and the 'Arcturus' sculpture/light fitting has already been removed.

## Spencer Street Power Station

Following the 'accidental' demolition of the only original 1896 building of Victoria's first municipal electric power station, only the 1908 office block facing Spencer Street and the 'Economiser' buildings remain, along with the site of the former coal yard between them on the corner of Spencer and Little Bourke Streets.

The Minister for Planning has recently issued a permit for the massive four-tower 2500 apartment and mixed use 'Upper West Side' development that impacts these remaining structures. This follows the first meeting of the new Central City Standing Advisory Committee on 9 July, which considered a Department of Planning and Community Development report recommending approval of the scheme with a few minor alterations. At the Committee meeting Trust staff spoke against the treatment of the heritage buildings, which are protected by a Heritage Overlay. Previous plans had assumed their demolition but a variation retained the buildings, and there has been further minor improvement in their treatment, however one tower is still going to be built almost over the top of heritage listed buildings, partly suspended on legs passing through the roof. Following intensive investigation of a possible compromise and considering the resources required and the likelihood of success, we have chosen not to exercise the right to a VCAT review.



# Taking courtroom dramas beyond the burbs'

Merino is a small town in south west Victoria.  
It has one policeman. His name is Barry Judge.



SCHOOL KIDSTAKE PART IN OMG COURTROOM DRAMAS. NATTRUST 2010.

A fatal road crash on his beat turned out to involve a culpable driving charge laid against one of the local young drivers. Barry wanted to find a program that might help young people think before they make an error of judgment that could devastate families and small communities.

By searching the internet he came across the *I've killed my best mate* courtroom drama at [www.oldmelbournegaol.com.au](http://www.oldmelbournegaol.com.au).

He wanted to find out more so he visited in July and was impressed with the program in the Old Magistrates' Court. The problem was getting this program out to rural Victoria.

Barry then had the idea of using rural courts, when they are out of session, to run the courtroom drama in. Barry and the Trust got together and have set up a pilot to be run in the Hamilton Court on October 7 featuring Casterton Secondary College Year 11 students. The Trust will provide the expertise with the hope that a successful trial may lead to a funding application that takes the culpable driving courtroom drama into the bush in 2011 and beyond.

**Simon Dalton,**  
Programs Development Manager, OMG

## Mrs Sargood comes to school

Imagine meeting Mrs Sargood in your classroom – a real life character from Melbourne's fabulous 19th century.

She is an imperious and imposing woman exquisitely dressed with a bustle, silk dress with flowing skirts that rustle as she moves between the desks.

She rings a loud bell and insists following her in a neat line before entering class. Boys and girls must stand at attention.

She explains that she is here to address manners and teach class in much the way her own ten children receive instruction at her home.

And she is certainly here to ensure suitable discipline is maintained. She has a dunces cap for reprobates and firmly reminds students that the cane was once a common teacher's aid.

She teaches proper manners like bowing to a lady, standing when a woman enters the room and keeping nails clean.



GEORGINA ADDISON-WADE A 'STERN' MRS SARGOOD. NATTRUST 2010.

She shows old grainy photos of all ten of her children and she tells of how they lived and what they did.

Then its lesson time and time to learn arithmetic useful for counting pennies, shillings, pounds and guineas.

Then learn about the might of the British Empire and how our wonderful Queen Victoria is sovereign of Australia.

And then its time to write with a scratchy nib pen in copperplate script using ink from a bottle without blotting copy books or smudging fingers.

Over the past twelve months Georgina

Addison-Wade of the Trust has been developing a new primary schools program based on the character of Mrs Sargood who raised and home schooled ten children at Rippon Lea House & Gardens. The program includes not only a visit from Mrs Sargood, but schools are left with a trunk containing all sorts of artefacts, images, documents, toys, cookware, laundry appliances and school material for students to examine and handle for a week in

their classroom. The program is designed to engage students directly with their heritage by letting them touch, feel and experience life as it was last century in their classroom. The character of Mrs Sargood provides a vehicle for pedagogical aims in Australian social and urban history to be delivered through role-play, interaction and hands-on activity.

This program has been generously funded through the Andrews Foundation and incorporates the new national history curriculum.

**Martin Green,**  
Learning & Interpretations Manager





# Olive Tree returned to McCrae Homestead



SHARON BOWEN AND GLENDA VINER, VOLUNTEER MANAGER OF BALLAM PARK HOMESTEAD IN FRANKSTON PLANT THE OLIVE TREE AT MCCRAE

On Friday 23 July at McCrae Homestead a special olive tree was planted...

In the late 1840s, pioneer Georgiana McCrae gave a friend from the Liardet family a cutting from one of the olive trees growing in her orchard at Arthur's Seat, and so the story begins...

On a recent sunny day some of the volunteers from Ballam Park, together with Martin Purslow CEO NT, Phil Tulk, Gardens and Estates Manager NT, Angela Dalrymple and Margo Hall - descendants of the McCrae family plus staff and volunteers from McCrae

Homestead, returned the olive tree back to the orchard in which one had stood so many years ago.

Sharon Bowen, Manager of McCrae and Mulberry Hill Homesteads said: "At the time, Georgina's friend received the cutting the Liardet family was preparing an orchard at their then new property, Ballam Park in Frankston.

"Today, the tree at Ballam Park still stands and is very old, so it will be nice to always have an olive tree to link us to our past," she said.

Ballam Park is owned by the City of Frankston and is the oldest homestead left in Frankston.

# WANTED - your designer clothes!

A successful new initiative this year saw the Trust Collections Team turn used designer clothing into conservation cash.

The 'Retro Clothing' sale held one autumn weekend in March proved wildly successful. Organised entirely by volunteers, and featuring stunning, late 20th century designer outfits and accessories from a recently deceased estate, this unusual sale raised a profit of more than \$10,000 for the Trust - a wonderful result.



Our thanks go to the family of the deceased who played an active role throughout the event, and to the indefatigable Collections volunteers who were responsible for developing and then implementing the project. The proceeds of the sale will be put towards the conservation and display of garments in the Trust's extensive Costume Collection.

We have discovered that there is a real demand and many potential buyers for quality second hand clothes and accessories from all eras. So the Collections Team wish to repeat its success at a further 'retro sale' in March 2011. To do this they need your donations! All proceeds of future clothing sales will be used to preserve the Trust's Costume Collection.

If you have any suitable fashion items such as vintage clothes, hats, gloves, belts, handbags, scarves, designer labels, please phone either Libby on 9819 4831, or Nance on 9882 6405.

Caroline Molesworth, Philanthropy Manager

## Killing time at OMG



DAVID WENHAM PLAYS SOLICITOR ANDREW FRASER. CREDIT: KATRINA TEPPER FROM SOURCE: WWW.NEWS.COM.AU

A compelling true crime drama *Killing Time* was recently filmed over five days at the Old Magistrates Court and The City Watch House at the Old Melbourne Gaol.

Respected actor, David Wenham plays Andrew Fraser one of Australia's disgraced solicitors, and it is his story that *Killing Time* follows. Fraser's rise from small time lawyer to successfully defending the most infamous criminals this country has ever seen.

The story ends with the solicitor's ultimate downfall and imprisonment for five years in maximum security. Fraser's clients included Dennis Allen, Jimmy Krakouer, Alan Bond and those involved in the Walsh Street Murders. While in prison the solicitor was forced to reflect on where it all went so wrong, and in an attempt to salvage his shattered reputation he wrote a book, which has subsequently been turned into a mini-series.

Sean DeCourcy, Customer Service & Operations Manager, OMG



# How to attract and keep volunteers of all ages



Before leaving the Trust, Customer and Volunteer Services Coordinator at Como House & Garden, Valerie Laycock attended a volunteer conference on 'How to attract and retain volunteers'.

The conference began with insightful definitions and descriptions of all generations. Valerie explains: "The beginning of the session was so informative and helpful as it enabled us to learn about older volunteers, but also the younger ones; what attracts them and, how they learn and like to be rewarded. The facilitator

on the day, Martin Cowling described different generations - how to find them and communicate with them," (please see table to the right).

Knowing about each generation and learning about what encourages them should help organisations like the Trust to shift approaches to team building for all aged volunteers, and attracting younger ones, said Valerie.

"I think the first step could be to create and maintain a NT Volunteer Facebook Group, where volunteers can be recruited, post photos, videos, chat, comment and connect with other volunteers - some food for thought." Please go to [www.pfts.com.au/Diversity.htm](http://www.pfts.com.au/Diversity.htm) to read more.

## Stories of heritage and social justice

The streets of Melbourne weave a beautiful and complex story of architectural and historic legacy.

These streets and buildings have many more tales to tell however... In the case of Ross House, these are tales of social justice and environmental sustainability.

Ross House is a place for community groups to grow, connect and evolve. It is a unique venture, a self-managed five-storey heritage building in Flinders Lane. Ross House provides community groups

with affordable access to office space, resources and meeting spaces, networks and shared experiences.

Over the past two decades Ross House has nurtured over 300 organisations and is currently home to more than 50 groups. The Ross House stories portray self advocacy, disability, social activists, multiculturalism and concern for the environment.

The Trust is currently holding an appeal for heritage works essential for maintaining the building. If you would like to be part of this story please make your tax deductible donation at [www.rosshouse.org.au](http://www.rosshouse.org.au), or phone (03) 96501599.

### Silent generation 65+

- local newspapers, newsletters, church groups
- social interaction, clearly defined roles, appeal to sense of duty
- don't want parties or expensive gifts; just recognition for their efforts
- want a sense of togetherness, community and socialisation during volunteering
- volunteering is their identity
- they want to be treated with respect and need structure

### Baby boomers 44-60

- network, word of mouth, newspapers
- flexible options, meaningful engagement, opportunity to make a difference
- they spend time traveling, working or opening up new businesses
- they're looking after their parents and grandchildren and are too busy to volunteer!
- they disengage themselves from volunteering because the free time that they finally have they want to spend on themselves

### Generation X 28-42

- internet, information sessions, media (radio/TV), online newspapers
- negotiable hours, group opportunities, meaningful/project type roles
- 'latch key' generation, take care of themselves and grew up with an increase number or divorces
- have a high civic involvement
- they want direct results and they want to see how their efforts will impact
- don't want to sit around, chat and make friends; they want to be productive
- their committees are online
- they will put family and friends before volunteering
- comfortable with technology and change, like flexibility and need little structure
- would like to be able to have their kids and volunteer together with them
- if an organisation's website doesn't attract them; not interested
- they volunteer more for benefit to themselves; not for society
- they want to increase their skills, learn and feel rewarded for volunteering

### Generation Y 13-25

- internet, social media (Facebook), radio, TV, peers
- work experience, real skills, make a difference
- they project confidence, like to shock people and want to decide the outcome
- they have a high civic involvement and are starting to reach the volunteering levels of the silent generation
- they are idealistic, flexible and optimistic
- they are highly entrepreneurial and are already starting up their own businesses
- very environmentally and ethnically friendly, comfortable with diversity
- good at multitasking, excellent with computers, phones, TVs, games
- hungry for feedback and rewards; want to see their photos on Facebook at the end of the day so they can 'tag', comment and chat about their experience outwardly





# The Burrell Twycross Gallery is a winner



THE BURRELL TWYXCROSS GALLERY. NATTRUST

CEO for the Trust, Martin Purslow said of the win: "A fantastic result announced by the Minister for the Arts, Peter Batchelor and a great credit to our benefactor Dr Will Twycross. His determination and hard work ensuring that fourteen contextual stories were digitally developed as separate short programs to be viewed at McCrae was an outstanding feat. It is also a credit to all Trust staff involved in the construction and fitout of the new McCrae Galleries. Well done!"

The Award citation reads as follows...

**Category: Multimedia and DVD Winner: Visions of Port Phillip: The Burrells of Arthur's Seat (1851-1925).**

"A rich and extensive family photographic album forms the extraordinary raw material for a 14-chapter social documentary which also draws on family stories to profile the development of one of Melbourne's historic and popular beachside holiday region. The opening segment of this DVD is immediately captivating as a young Burrell family member skilfully interprets and narrates a selection of artistic photographic imagery. All chapters stand alone as insightful pieces of social documentary, but together they are woven into a textured tapestry of family stories and social commentary. The chapter on photography is particularly well produced and would be a wonderful educational resource for students of photography and history." Go to [www.vic.gov.au/victorian-community-history-awards-2010.html](http://www.vic.gov.au/victorian-community-history-awards-2010.html) and [www.nattrust.com.au](http://www.nattrust.com.au) to read more.



THE BURRELL TWYXCROSS GALLERY. NATTRUST

The new Burrell Twycross Gallery at McCrae Homestead shortlisted in the Best Exhibit/Display Category at the Victorian Community History Awards wins its category.

## The Trust takes part in the Baby Boomers & Retirees Lifestyle Expo

This November, the Trust will have a stand at the Baby Boomers and Retirees Lifestyle Expo catering for all lifestyle choices.

The expo offers fine hospitality and gleaned knowledge on how to become healthier, wealthier and wiser. Wealthy not only in the financial sense, but more importantly in spirit, with a vitality and attitude that better prepares you for the challenges of the 21st century. Expo highlights include: cooking demonstrations, seminars, food and wine tastings, travel and leisure, recreation, finance and investment, home and garden and of course health and wellbeing

Baby boomers have been 'hip' in the 1960s, and 'groovy' in the 1970s, they have fought for peace and the environment like no other generation before. They have also changed the face of society as their parents knew it. It's been more than 60 years since the first of the baby boomers were born, and this expo celebrates this generation. Held Friday 26-28 November from 10am-5pm, entry to the expo is FREE. Visit [www.babyboomerslifestyleexpo.com.au](http://www.babyboomerslifestyleexpo.com.au) for more information.

## The Trust's walking tours

Put your best foot forward and bring a friend along to discover Melbourne's hidden treasures through diverse walking tours held by the Trust...



### Melbourne Heritage Tours

Find out more about your city, its social history and architecture through the Trust's Traditional, Commercial, Mercantile, and Marvellous Melbourne City Heritage Walking Tours. Most of the walks take around two hours and include morning or afternoon tea. Advance bookings are essential, please phone 8663 7228, or email: [bookings@oldmelbournegaol.com.au](mailto:bookings@oldmelbournegaol.com.au). Prices are: adults \$33 and concession \$27.50.

### Historic walks of Emerald Hill

Our Portable Iron Houses volunteers conduct a series of walks around Emerald Hill, the original name for South Melbourne, offering a glimpse into the way of life in the second half of the 19th century. The tours start at the houses located at 399 Coventry St, South Melbourne, and take approximately 1.5 hours including light refreshments as well as a tour of the houses. Advance bookings are essential please phone 8663 7228, or email: [bookings@oldmelbournegaol.com.au](mailto:bookings@oldmelbournegaol.com.au). Prices are: \$22 for adults, \$20 concession, \$10 for children. Trust members prices are: \$19 for adults and \$7 for children.



# Branch wrap-up

Here is this month's run-down on Branch activity.

## Mount Alexander Branch



Mount Alexander and Bendigo Branch members visited the Melbourne Museum's Artefacts Store, not normally open to the public. At the museum they were shown a varied range of artefacts by Liza Dale-Hallett, Senior Curator. One of the fascinating things they saw was the first Australian-made aeroplane to fly. The aircraft was built by John Duigan and his brother Reginald on their property near Mia Mia, south of Bendigo. It made a short 7m flight on 16 July, 1910, followed by longer and higher flights.

Qantas recently announced that they will name one of their Airbuses (380) after Duigan in recognition of his contribution to the aviation industry.

## Ballarat Branch

The Ballarat Branch celebrated its 50th anniversary in September with a celebratory dinner held at Alexandria on Lydiard the site of the original meetings in 1960.

Recently, members enjoyed an evening viewing slides of local Trust listed properties. This provided many with the opportunity to scrutinise Trust records of Ballarat and to cross check entries and make any necessary alterations. President Dianne Gow facilitated the forum looking towards the Heritage Festival in 2011. This session took place in the Trench Room at the Ballarat Town Hall.

*The Corner Shops of Ballarat*, a publication by the Branch continues as an outstanding success with many print runs sold out. The small directory covers shop ownership and occupancy up until

1970 and includes photographs, names of owners, usage and locations. Anyone requiring a copy please contact the Secretary on 5333 5163.

## Bendigo Branch

Late August Mike Butcher, President of the Bendigo Branch retired after many years of service to Bendigo heritage. We thank him for all of his hard work. Gary Hill continues as acting Vice-President and Elaine Doling as Secretary. A new President will be elected at the Branch's next AGM.



HAREWOOD HOUSE AT TOORADIN. NATTRUST ARCHIVE.

## Mornington Peninsula Branch

A Fireside lunch event held in July proved to be a popular event with Dr Liz Rushen, historian and author speaking about non-convict immigrant women. Many of the women turned to creating educational facilities, one particular woman mentioned was a schoolmistress, who went on to become Mrs Sage from Sage's Cottage. The lunch was attended by two Sage family members, Mrs Evelyn Sage of Sommerville and Miss Lorraine Sage from South Gippsland.

Currently the branch is preparing for its AGM in November, which will incorporate some local wetlands walks to follow the meeting. The details can be found in the events pages of this issue.

## Geelong and Region Branch

In order to meet members across the region, recent monthly events including tours of classified places were held at Colac, Drysdale and Lethbridge. The Branch education program has been delivered to more than 670 primary and secondary students during the last six months, with enthusiastic response from teachers. We are starting to update the Trust Register for places in our region and we have contributed snapshot commentary of 144 places to the City of Greater Geelong Cultural Program for the UCI Road Championships 2010 (an international cycling event held 29 September to 3 October). With the proceeds from coach tours we are pleased to have made donations to the Windsor, the La Trobe's Cottage roof restoration and The Heights Water Tower appeals.

## Bass Coast Branch

The Branch President's role, with Helen Bulls' relocation to Mallacoota, has been currently handed over to Ross Lloyd.

In September, members attended an inspiring tour of the beautiful Harewood House at Tooradin (pictured).

## Inner West Branch

The Branch AGM will be held on Ercildoune corner of Napier and Hyde Streets, Footscray on 31 October at 2pm. There will be a lunch at 12.30pm at the Junction Hotel on the opposite corner. If you wish to attend the lunch please send Hugh Basset an email at [hugh@bassetlobaza.com.au](mailto:hugh@bassetlobaza.com.au), or phone 9689 7973.





# Upcoming Events

**OCTOBER 2010 –  
FEBRUARY 2011**

For additional information and late events, please check [www.nattrust.com.au/events](http://www.nattrust.com.au/events)

Entry fees apply for National Trust members for special fundraising events at Trust properties. 'Members' prices listed are for National Trust members. Some events require pre-bookings – please see details below.

## Event listings by date

<b>First Sunday of each month</b>	Open House (Portable Iron Houses)
<b>Third Sunday of each month</b>	Walking Tour (Portable Iron Houses)
<b>Tuesday 5 October – Monday 1 November 2010</b>	Heritage Trail Awards (Casey Cardinia Branch)
<b>Saturday 16 October – Sunday 17 October</b>	Visit Historic Geelong (Geelong and Region Branch)
<b>Saturday 16 October – Sunday 17 October</b>	St. Catherine's Art Show and Opening of Illawarra
<b>Sunday 17 October</b>	Open Day (Labassa)
<b>Monday 18 October</b>	Members Monday 'Showcase' Morning Tea (Casey Cardinia Branch)
<b>Friday 22 October – Sunday 24 October</b>	Patriarch & Muse (Labassa)
<b>Saturday 23 October, Mount Sturgeon Estate</b>	Rare Public Opening of B&B (Mount Alexander Branch)
<b>Sunday 24 October</b>	Visit Barwon Park and The Heights (Geelong and Region Branch)
<b>Tuesday 26 October</b>	Geelong Eastern Cemetery Tour (Geelong and Region Branch)
<b>Thursday 28 October</b>	Lunching and Listening, Fourth Thursday Luncheons (Ripponlea)
<b>Thursday 28 October</b>	'Crown Vs Ned Kelly' Courtroom Drama (Old Melbourne Gaol)
<b>Friday 29 October</b>	'Kelly Quest: The ultimate search for the real Ned Kelly' (Old Melbourne Gaol)
<b>Wednesday 10 November</b>	'Roast lamb, peas and a bottle of claret- Such is life' dinner (Old Melbourne Gaol)
<b>Every Thursday from November – April 2011</b>	Ripponlea Storytime
<b>Every Saturday and Sunday in November, 2010</b>	Bellarine Quilters Bi-Annual Exhibition (Portarlington Mill)
<b>Saturday 13 November</b>	Peninsula Branch AGM (Geelong and Region Branch)
<b>Sunday 21 November</b>	Open Day (Labassa)
<b>Saturday 27 November</b>	The Best of the Mornington Peninsula (Geelong and Region Branch)
<b>Thursday 25 November</b>	Lunching and Listening, Fourth Thursday Luncheons (Ripponlea)
<b>Saturday 27 November</b>	A Birthday Party for Georgiana Lucia (McCrae Homestead and Galleries)
<b>Sunday 28 November</b>	A stroll through South Yarra – Part 2 (Walking Tours)
<b>Monday 29 November</b>	Branch AGM (Casey Cardinia Branch)
<b>Tuesday 30 November</b>	Queenscliff Christmas Breakup (Geelong and Region Branch)
<b>Saturday 4 &amp; 11 December &amp; Sunday 5 &amp; 12 December</b>	Humpty Dumpty (Labassa)
<b>Saturday 4 December</b>	Gallery Opening (The Alcaston Gallery)
<b>Monday 6 December</b>	Christmas Carols (Ripponlea)
<b>Saturday 11 December</b>	Christmas at Arthurs Seat (McCrae Homestead and Galleries)
<b>Tuesday 21 December</b>	Candlelit Carols with Trinity College Choir (La Trobe's Cottage)
<b>Sunday 16 January, 2011</b>	Open Day (Labassa)
<b>Saturday 22 January, 2011</b>	Celebrating Robbie Burns (McCrae Homestead and Galleries)
<b>Tuesday 25 January, 2011</b>	Celebrating Robbie Burns (McCrae Homestead and Galleries)
<b>Wednesday 26 January, 2011</b>	Australia Day Celebration (La Trobe's Cottage)
<b>Thursday 27 January 2011</b>	Tramboat to Williamstown
<b>Sunday 30 January, 2011</b>	Discover more of Fitzroy (Walking Tours)

# National Trust Property Events

---

## PORTABLE IRON HOUSES

---

399 Coventry Street, South Melbourne  
(MEL Ref: 2J K2)

### Open House

**WHEN:** First Sunday of each month

There are three prefabricated cottages on site constructed of iron and wood; imported from Britain during the Gold Rush years. A video gives an interesting insight into the importation of portable buildings and there are interpretative panels to assist visitors.

**CONTACT 9699 2172 or 9645 7517**

---

### Private Guided Walks

**WHEN:** Third Sunday of each month

Volunteers run private guided walks or lunches with a speaker once a month.

**CONTACT 9699 2172 or 9645 7517**  
**BOOKINGS ESSENTIAL**

---

## LABASSA

---

2 Manor Grove, North Caulfield (Mel Ref 58 H11)  
Please Park in Orrong Road

### Open Day

**WHEN:** Sunday 17 October 2010

**TIME:** 10:30am – 4:30pm

**COST:** Adult \$8, Concession/Child \$5.50,  
Family \$20, Members Free

Internal tours of the opulent interiors (11am and 2:45pm). External tour of architectural features (1pm). Self guided tours also available.

Tearooms will operate throughout the day.

**CONTACT 9527 6295 or 9509 6596 for further information. No bookings required**

---

### Open Day

2 Manor Grove, North Caulfield 3162

**WHEN:** Sunday 21 November 2010

**TIME:** 10:30am- 4:30pm

**COST:** Adult \$5, Child \$5.50,  
Concession \$5.50, Family \$20

Internal tours of opulent interiors (11am and 2pm). External tour of architectural features (12:30pm).

Tearooms will operate throughout the day.

**CONTACT Bronwyn Worrall 9509 6596**  
**No Bookings required.**

---

### Open Day

2 Manor Grove, North Caulfield 3162

**WHEN:** Sunday 16 January 2011

**TIME:** 10:30am- 4:30pm

**COST:** Adult \$5, Child \$5.50,  
Concession \$5.50, Family \$20

Internal tours of opulent interiors (11am and 2pm). External tour of architectural features (12:30pm). Tearooms will operate throughout the day.

**CONTACT Bronwyn Worrall 9509 6596**  
**No Bookings required**

---

### Humpty Dumpty

2 Manor Grove, North Caulfield 3162

**WHEN:** Saturday 4 & 11 December &  
Sunday 5 & 12 December

**TIME:** 2pm- 4:45pm

**COST:** Adult \$10, Child \$5

The much loved pantomime, *Humpty Dumpty*. Refreshments will be served.

**CONTACT: Bronwyn Worrall 9509 6596**  
**BOOKINGS ESSENTIAL**

---

### Patriarch & Muse

**WHEN:** Friday 22 October –  
Sunday 24 October 2010

**TIME:** 8pm – 10:30pm approx

(Friday & Saturday)

3pm – 5:30pm approx (Sunday)

**COST:** Adult \$25, Concession/Members \$22

Discover the life of a German immigrant family in 19th century Australia through music and readings in the beautiful Music Room of Labassa. The doctor has a 'good voice' and his wife is a professional pianist – both trained in Berlin. Program includes works by Beethoven, Chopin, Schubert & Schumann. Presenter/ baritone Anthony Ransome, Pianist Janet Gibbs. Refreshments will be served.

**CONTACT Bronwyn Worrall 9509 6596**  
**BOOKINGS ESSENTIAL and payment by credit card or cheque is required**

---

## LA TROBE'S COTTAGE

---

Dallas Brooks Drive, South Yarra

### Candlelit Carols

**WHEN:** Tuesday 21 December 2010

**TIME:** 7pm – 9pm

**COST:** Per Person \$10, Family \$20

Celebrate Melbourne's first Christmas tree with the renowned Trinity College Choir. The La Trobe family introduced the European idea of the Christmas tree to the antipodes in 1849, and in letters home, Swiss-born Sophie wrote of happy Christmas celebrations. On this musical evening, which will appeal to all, see the Cottage illuminated and decorated in the traditional way. Refreshments with a festival flavour will be served.

**CONTACT 9656 9800 for further information.**  
**No bookings required**

---

### Australia Day at La Trobe's Cottage

**WHEN:** Wednesday 26 January 2011

**TIME:** 1pm – 4pm

**COST:** Adult \$5, Concession \$4,  
Child \$3, Family \$10

Colonial folk music will accompany the festivities as we celebrate Australia Day in the Domain. The 'Raising of the Flag' will be saluted in fine style by the Rupertswood Battery at 2 – 3pm. The Cottage will be open from 1 – 4pm, refreshments will be served in the courtyard, and Victorian games will be waiting for the children.

**CONTACT 9656 9800 for further information.**  
**No bookings required**

---

## MCRAE HOMESTEAD AND GALLERIES

---

11 Beverley Road, McRae

---

### Birthday Party of Georgiana Lucia

**WHEN:** Saturday 27 November 2010

**TIME:** 1pm – 5pm

**COST:** Adult \$20, Concession \$18, Family \$45,  
Member Adult \$18 (If family is different  
from standard 2 adults & 4 children  
please specify)

Enjoy a 1838 children's birthday party with games, afternoon tea and tour of the house and galleries.

**CONTACT Joan or Sharon 5981 2866**

---

### The Alcaston Gallery

**WHEN:** Saturday 4 December 2010

**TIME:** 11:30am

**COST:** Adult \$15, Child \$5, Member Adult \$10,  
Member Child \$5

Meet Beverley Knight (Director), who will tell us about this unique Gallery dedicated to the promotion of the work of Torres Strait Island Aboriginal Artists illustrating their culture and their own style. A glass of wine will be served.

**CONTACT Lesley Barnes 9735 5772**

---

### Christmas at Arthurs Seat

**WHEN:** Saturday 11 December 2010

**TIME:** 7pm – 9pm

**COST:** Adult \$20, Concession \$18, Family \$45,  
Member Adult \$18 (If family is different  
from standard 2 adults and 4 children  
please specify)

Step back in time and see what Christmas in the 1840s was like.

Tour of the homestead and galleries and enjoy a Christmas supper.

**CONTACT Joan or Sharon 5981 2866**





# Upcoming Events

**OCTOBER 2010 –  
FEBRUARY 2011**

For additional information and late events, please check [www.nattrust.com.au/events](http://www.nattrust.com.au/events)

Entry fees apply for National Trust members for special fundraising events at Trust properties.

'Members' prices are listed for National Trust members. Some events require pre-bookings – please see details below.

## Celebrating Robbie Burns

**WHEN:** Saturday 22 January 2011

**TIME:** 7:30pm – 9:30pm

**COST:** Adult \$25, Concession \$23,  
Family \$45, Member Adult \$23,  
Family \$45 (If family is different  
from standard 2 adults and 4 children  
please specify)

Celebrate the life of Scottish poet, Robbie Burns. Tour of the homestead and galleries. Join in the piping of the Haggis and enjoy a true Robbie Burns night supper.

**CONTACT** Joan or Sharon 5981 2866

## Celebrating Robbie Burns

**WHEN:** Tuesday 25 January 2011

**TIME:** 7:30pm – 9:30pm

**COST:** Adult \$25, Concession \$18,  
Family \$45, Member Adult \$23,  
Family \$45 (If family is different from  
2 adults and 4 children please specify)

Celebrating the life of Scottish poet Robbie Burns. Tour of the homestead and galleries. Join in the piping of the Haggis and enjoy a true Robbie Burns night supper.

**CONTACT** Joan or Sharon 5981 2866

## Tramboat to Williamstown

**WHEN:** Thursday 27 January 2011

**TIME:** 2pm (Approx)

**COST:** Adult \$48, Child \$38,  
Adult Member \$43, Adult Child \$38

With commentary from the Skipper, passengers will cruise down stream in the unique Tramboat through the port of Melbourne to the port of Williamstown. After a tour of the port, morning tea will be served and a delicious 'Fish and Chip' lunch will be delivered to the Tramboat for the return journey. An event not to be missed!

**CONTACT** Lesley Barnes 9735 5772

**LIMITED BOOKINGS**

## PORTARLINGTON MILL

7 Turner Court, Portarlington 3223

### Bellarine Quilters Bi-Annual Exhibition

**WHEN:** Every Saturday & Sunday in  
November 2010

**TIME:** 12pm – 4pm

**COST:** Adult \$4, Concession \$3, Child \$2,  
Family \$10, Adult Member \$2

A grand display of quilts made by members of the Bellarine Quilters.

**CONTACT** Andrew Mason 5259 3202 or  
0408 172 770

## RIPPON LEA HOUSE & GARDENS

192 Hotham St, Elsternwick 3185

### Lunching and Listening Fourth Thursday Luncheons

**WHEN:** Thursday 28 October 2010

**TIME:** 12pm – 1:30pm

**COST:** \$20 per Person

Sister Eileen Daffy AO from the Sisters of Mercy is a well known Victorian educationalist. For the past 14 years she has been the principle of an elite boys school in Pakistan. She will talk about some of her intercultural experiences during her work.

**CONTACT** Lynette Dobson 9555 8382 or  
Carol Wigham 9584 1304

### Lunching and Listening Fourth Thursday Luncheons

**WHEN:** Thursday 25 November 2010

**TIME:** 12pm – 1:30pm

**COST:** \$20 per Person

#### Live Life Laughing

Australia's foremost laughter therapist Phillipa Challis' mission in life is to take laughter to the world. As founder of the Laughter Clubs Victoria and a laughter practitioner, Phillipa's aim is to give people the power to share and make the world more open and connected.

**CONTACT** Lynette Dobson 9555 8382 or  
Carol Wigham 9584 1304

## Storytime

**WHEN:** Every Thursday from November 2010  
to April 2011

**TIME:** 11am- 12pm

**COST:** Parents \$7, Child over 3 years \$3

Fun and interactive storytelling with a wide variety of stories/songs and activities for the little ones aged between 3 and 7 years (approx).

Stories are read outdoors in the gardens under the magic storytime tree.

**CONTACT** Nicole Nolan 9519 9005 or  
0420 969 387

## Christmas Carols at Rippon Lea

**WHEN:** Monday 6 December 2010

**TIME:** 5:30pm- 8:30pm

**COST:** Adult \$7, Child \$3, Concession \$5,  
Family \$16

Bring a picnic tea and relax in the superb setting of the garden whilst listening to school choirs and The Melbourne Chorus providing an atmosphere of Christmas splendour.

Our special guest, Santa will be making a special appearance! Boat rides available (weather depending.)

#### BOOKINGS ESSENTIAL

[www.ripponleaestate.com.au](http://www.ripponleaestate.com.au)

**Tickets can be purchased at the door.**

**CONTACT** Nicole Nolan 9519 9005 or  
0420 969 387

**WHEN** 28 October and 11 November 2010

## OLD MELBOURNE GAOL

377 Russell Street (between La Trobe and Victoria St) Melbourne 3000

## Ned Kelly Anniversary Special Events

### 'Crown Vs Ned Kelly' Courtroom Drama

**WHEN:** Thursday 28 October

**TIME:** 5:30pm- 8pm

On the 130th anniversary of his trial on this site, be part of the immersive and interactive courtroom experience that brings to life Ned Kelly's trial in a scripted drama. Discuss the verdict with our knowledgeable staff and learn about the trial that sentenced our most infamous bushranger to death.

**PRICE \$38- Includes canapés and wine**  
**BOOKING ESSENTIAL** call 8663 7228



### Kelly Quest: THE Ultimate SEARCH for the real Ned Kelly

**WHEN:** Friday 29 October  
**TIME:** 9:30am- 3:30pm

Join a discovery tour that will take you on a quest to uncover the Ned Kelly legend. The Kelly Quest begins at the Victoria Police Museum, goes to the State Library of Victoria and is followed by the interactive, scripted trial of Ned Kelly at the former Magistrate's court. At each venue you will find original Kelly items and a range of primary source material, as well as specialist facilitators to give unique perspectives. The day ends where Ned's life did - at the gallows of the Old Melbourne Gaol.

**PRICE \$20**  
**BOOKINGS ESSENTIAL** (minimum age 13 years) call 8663 7228

**PLEASE NOTE:** Make your own way to and between venues - public transport recommended

*'Roast lamb, peas and a bottle of claret - Such is life'*

**WHEN:** Wednesday 10 November  
**VENUE:** Old Melbourne Gaol

On the 130th anniversary of Ned's last night in the gaol, commemorate his last meal with a unique dinner and a 'Such is Life' performance at the Old Melbourne Gaol.

**PRICE:** \$120 (includes three course dinner)  
**EARLYBIRD DISCOUNT:** \$40 for booking's made before 30 September  
**BOOKINGS ESSENTIAL** call 8663 7228

## National Trust Events

### St. Catherine's Art Show and Opening of Illawarra

**WHEN:** Saturday 16 October 2010  
**Sunday 17 October, 2010**  
**TIME:** 2pm - 4pm  
**VENUE:** Illawarra

17 Heyington Place, Toorak

Rare opportunity for Trust members to view the historic trust owned property 'Illawarra'. Tours will be conducted at 2pm and 3pm.

**BOOKINGS ESSENTIAL 9656 9800**

## WALKING TOURS

### A stroll through South Yarra (Part 2)

**WHEN:** Sunday 28 November 2010  
**TIME:** 10am- 12pm

**VENUE:** South Yarra (Meeting point is not advised beforehand, but is included on tickets issued before the event, after payment is received).

The second walk in the South Yarra series will continue its way through this iconic suburb of inner Melbourne. Gain a fascinating insight into the development of this early-settled and fashionable part of our city.

**COST** Adult \$30, Adult Member \$25  
**BOOKINGS** [www.nattrust.com.au](http://www.nattrust.com.au) or  
**OMG Events Booking Line 8663 7292**  
**CONTACT** Caroline Molesworth 03 9656 9826

### Discover more of Fitzroy

**WHEN:** Sunday 30 January 2010  
**TIME:** 10am- 12pm

**VENUE:** Fitzroy (Meeting point is not advised beforehand, but is included on tickets issued before the event, after payment is received).

Fitzroy has always been a popular destination for our walking tours. This new walk introduces a different route which will traverse the lesser-known parts of this most historic Melbourne suburb.

**COST** Adult \$30, Adult Member \$25  
**BOOKINGS** [www.nattrust.com.au](http://www.nattrust.com.au) or  
**OMG Events Booking Line 8663 7292**

## Branch Events

### CARDINIA/CASEY BRANCH

#### Member Monday Showcase- Morning Tea

**WHEN:** Monday 18 October  
**TIME:** 11am  
**VENUE:** Heritage Centre and Trust Gift Shop  
1 Peel Street, Berwick.

Members, volunteers and supporters are invited to bring along an item of heritage interest and share its story with the group. Any old or unusual item, possibly with an obscure use for the group to guess its purpose, or an ordinary item with an interesting story is welcome. Or just come along to meet Branch members and enjoy morning tea in the Function Room in the Heritage Centre and Trust Gift Shop.

**CONTACT 9769 5653 or 9707 1518**  
**BOOKINGS ESSENTIAL**

#### Heritage Trail Awards

**WHEN:** Tuesday 5 October - Monday 1 November  
**VENUE:** Trust Gift Shop- Pioneers Park Berwick  
We invite primary school children to enter the Heritage Trail Competition. Details and entry forms will be available from the Trust Gift Shop- Pioneers Park Berwick from 5 October and must be returned by 1 November. Learn about our local heritage and have lots of fun. Special awards and great prizes to be won.  
**CONTACT** Ian Good 9707 5160 or 9769 5653

#### Branch AGM

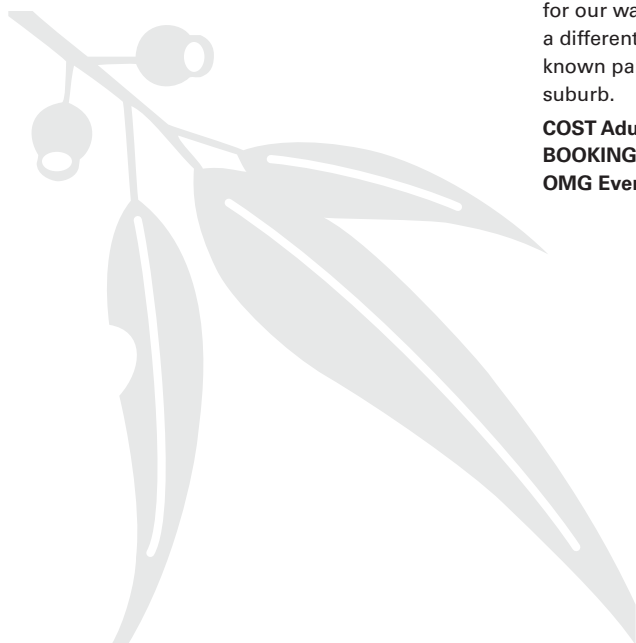
**WHEN:** Monday 29 November  
**TIME:** 7:30pm  
**VENUE:** Heritage Information Centre and Gift Shop, Peel Street, Berwick

Members are invited to the Branch AGM, 29 November at 7.30 pm in the Function Room in the Heritage Information Centre and Gift Shop, Peel Street, Berwick. Guest Speaker is Arthur Tonkin who will speak about 'Paddle Steamers of the Murray River'. Supper will be served.

**CONTACT** Ph: 9769 5653 or 9707 1518

#### Volunteers Christmas Party

Invitations to attend the Branch Christmas Party will be sent to volunteers in appreciation of their continued exceptional support throughout the year.





# Upcoming Events

OCTOBER 2010 –  
FEBRUARY 2011

For additional information and late events, please check [www.nattrust.com.au/events](http://www.nattrust.com.au/events)

Entry fees apply for National Trust members for special fundraising events at Trust properties. 'Members' prices listed are for National Trust members. Some events require pre-bookings – please see details below.

---

## GEELONG AND REGION BRANCH

---

### Visit Historic Geelong

**WHEN:** Saturday 16 October – Sunday  
17 October 2010

Many members who joined us for last year's bus trip to Ballarat have asked for another weekend away. This year we plan to join the Geelong Branch to visit the historic sites, buildings and gardens with expert local guides. Enjoy a social weekend with the Geelong Branch and share experiences.

**BOOKINGS 9707 1518**

---

### October 2010 at Barwon Park and The Heights

**WHEN:** Sunday 24 October 2010

**TIME:** 10am- 4:30pm (approx)

**VENUE:** Barwon Park

105 Inverloch Road, Winchelsea  
The Heights

140 Aphrasia Street, Newtown

**COST:** General Adult: \$55. Trust Adult \$50.

Travel by train or self-drive to Geelong railway station to meet a coach headed for Geelong and Trust property, Barwon Park, Winchelsea. Here enjoy a tour followed by a scrumptious lunch. Then travel to another Trust property, The Heights, for a tour of the property and the extensive old world garden. Afternoon tea will be served before heading to Geelong railway station. Cost includes coach, refreshments and tour fees.

**CONTACT Lesley Barnes 9735 5336**

**BOOKINGS ESSENTIAL by Friday October 15.**

**Send Cheque/Credit Card details and stamped self addressed envelope to Lesley Barnes:  
21 Winnetka Dr. Lilydale 3140**

---

### November 2010 at Queenscliff, Christmas Breakup

**WHEN:** Tuesday 30 November 2010

**TIME:** 4pm – 9pm

**VENUE:** Queenscliff Historical Society  
49 Hesse Street, Queenscliff

**COST:** \$5 for the walk and talk which  
includes a handout \$25 for a  
two-course Christmas meal.

An opportunity to look through the Museum followed by a talk and guided tour by the Queenscliff Historical Society. Meeting and Christmas meal will be held at the Queenscliff Inn.

**CONTACT Liz Bates 52431986**

**BOOKINGS ESSENTIAL by Friday 26th  
November**

---

### October 2010 at Geelong Eastern Cemetery

**WHEN:** Tuesday 26 October 2010

**TIME:** 11am – 2pm

**VENUE:** Geelong Eastern Cemetery  
141 Ormond Road, East Geelong  
(Please meet at the main entrance)

Tour of the old section of the cemetery is followed by a meeting and picnic lunch nearby the impressive grave of Nathaniel Brown, which has been restored by the branch. BYO picnic lunch and blanket.

**CONTACT Liz Bates 5243 1986**

---

## MORNINGTON PENINSULA BRANCH

---

### Peninsula Branch AGM

**WHEN:** Saturday 13 November 2010

**TIME:** 11:30am – 2:00pm

**VENUE:** The Briars

Nepean Highway Mt Martha

**COST:** No charge applies

Experience the Mt Martha Wetlands at both The Briars and the Boardwalk through the Balcombe Estuary. Bookings appreciated (for catering purposes).

The AGM will be an open air event under the trees in the picnic area adjacent to the Information Centre. At conclusion of AGM light refreshments will be served, followed by walks.

**CONTACT Elizabeth 9580 9617 or  
Adrienne 5976 1538**

**Appropriate footwear and clothing for weather  
on the day**

---

### The Best of the Mornington Peninsula

**WHEN:** Saturday 27 November 2010

**TIME:** 11am-4pm

**VENUE:** Briarswood, Mount Martha

**COST:** Adult \$45, Member Adult \$40

A visit to lovely Briarswood Bed & Breakfast, Mount Martha, followed by a delicious lunch and garden tour at Heronswood.

**CONTACT Lesley Barnes 9735 5772**

---

## MOUNT ALEXANDER BRANCH

---

### North East Women's Auxiliary APPEAL EVENTS

#### Mount Sturgeon Estate and Historic Homestead

Glenelg HWY, Dunkeld

#### Rare Public Opening of B&B

**WHEN:** Saturday 23 October 2010

**TIME:** 10am – 4pm. Last entry 3pm

**COST:** Adult \$10. Children under 16 free

Bring the family along to the historic Mt Sturgeon Estate, Cavendish Road Dunkeld open day for a rare public viewing on October 23, as part of Discover Dunkeld 2010.

Bring a picnic and admire the stunning Grampians panorama from the sprawling manicured lawns and gardens of the estate. Step back in time as you tour the immaculate restored 1800s Mount Sturgeon Homestead, featuring a magnificent collection of colonial artwork and period furnishings. View the original bluestone shearers' quarters and the handcrafted sandstone and bluestone woolshed where a collection of historical photographs will be displayed.

Parking is limited. A shuttle bus will run from the town centre's Markets in the park to the Mt Sturgeon Estate throughout the day.

**CONTACT 5577 2241**



# Have you stayed at one of Our Heritage B&Bs yet?

We have more than 50 delightful B&Bs around the state, both city and country, offering Trust members discounted accommodation.

They cover the whole gambit of accommodation from the grand, decorative and luxurious to tiny, basic, miner's cottages and even a paddle steamer. This is a great opportunity to experience the lifestyle of wealthy graziers, merchants, the ordinary people, workmen and miners. Why not support our program by indulging yourself with a stay at one of these interesting properties. Below are our picks for this quarter:



OLD CLUNES DAIRY

## Old Clunes Dairy

Two historic single-roofed cottages have been sensitively restored as one expansive and comfortable living space with modern amenities and twin balconies overlooking the leafy town of Clunes. The cottages have been decorated with colourful mosaics from materials found on the site, 8 Smeaton Road, Clunes 3370.



MOOLTAN HOUSE

## Mooltan Guest House

Built in 1924 in the Edwardian Style, Mooltan is the last of more than 40 Hepburn Springs Guesthouses. It offers the experience of 'going home' to a large country house and not having to do the dishes. An eye-catching hedge with the name sculptured across the front hides a leisure garden planned for quiet enjoyment with lawns, a gazebo and a tennis court overlooking the Hepburn Springs Spa Resort, the historic Bathhouse and the Springs Reserve just two minutes walk away, 129 Main Road, Hepburn Springs 3461.

## Isabella House

Reacquaint yourself with the past. 'Isabella House' is a fully hosted bed and breakfast and museum inviting you back to a past era. The ultimate 1900s experience; sleep in comfortable old world settings surrounded by antiques, memorabilia and collectables.

An open fire place and old kerosene lamps will transport you back to the past, just a few minutes drive from Mildura and less than half an hour from Wentworth N.S.W, 41-43 Chaffey St, Merbein.

## Toorak Manor

A gracious 19th century mansion set in an enchanting garden in Toorak. Very close proximity to Como House and Garden, 220 Williams Road, Toorak.

For more information please go to [www.natrust.com.au](http://www.natrust.com.au), or email Rosemary Henderson at [rosemary.henderson@natrust.com.au](mailto:rosemary.henderson@natrust.com.au), or phone 9656 9830.

Ina Frances Moss –  
17 December 1925 -  
9 July 2010



From the opening of Trust property, Gulf Station in 1986, Ina Moss has been a very devoted volunteer and supporter. It is with great sadness we note her passing and

with sincere gratitude we, the friends and relations of Gulf Station, give thanks for her long and much valued input, hard work and friendship.

## The results for Membership Renewal Incentive Prize Draw:

**Bleak House:** Nicole Date  
West Brunswick

**Strathvea:** J Onko  
Brighton

## Directory

### CHINA ROSE ANTIQUES

See our large range of  
Australian and imported antiques at  
[www.chinaroseantiques.com.au](http://www.chinaroseantiques.com.au)

# Booking form

Fill in form and send to the appropriate organiser WITH A STAMPED SELF-ADDRESSED ENVELOPE. All cheques payable to National Trust (Victoria).

NO REFUNDS CAN BE GIVEN IF CANCELLATIONS ARE RECEIVED AFTER FINAL BOOKINGS ARE MADE.

Send to: Bookings, National Trust,  
4 Parliament Place, MELBOURNE 3002  
or to address provided with event details.

Please mark envelope with name of event.

COMMITTEE

FUNCTION

MEMBERSHIP NO.

NO. ATTENDING

NAME

ADDRESS

FURTHER DETAILS

TELEPHONE

CHEQUE/CREDIT CARD FOR: \$

--	--	--	--	--	--	--	--	--	--

--	--	--	--	--	--	--	--	--	--

☐ Mastercard ☐ Visa  
☐ Amex ☐ Diners

NAME ON CARD

SIGNATURE

EXPIRY DATE





# Directory

## STAINED GLASS

Glass painting and leadlight. New commissions, restoration and reproduction work.

**BRUCE HUTTON** Almond Glassworks  
Phone: (03) 9686 0303  
[www.almond-glass.com](http://www.almond-glass.com)

## SILVER & METALWARE REPAIRS & REPLATING

- Have that small repair done or have your heirlooms fully restored by a silversmith with over 25 years experience in the antique restoration industry
- Services extend to all metals including brass, copper, spelter; also lacquering and antique finished.

Contact us now for a free appraisal and quotation  
**DUANE LUCAS** (03) 9460 1123  
11 Kurnai Avenue, Reservoir 3073  
Email: [heritagerepairs@primusonline.com.au](mailto:heritagerepairs@primusonline.com.au)



## CHIMNEY RESTORATIONS

By STEEPLE JACK JONES

Specialising in Victorian and Edwardian Chimney Restorations. Inclusive of all scaffolding and roof plumber (no 40647).

Telephone (03) 9543 6713

## RICHARD CARTER

Slate craftsman, all roof plumbing inclusive of restoration, repairs and renewals. Period bullnose verandah design and construction. Reg. No. 25058.

Telephone: 0418 566 406 / 9482 4680

## RESTORATION

### STEEPLE JACK JONES

- \* SLATE CRAFTSMAN
- \* TERRACOTTA SPECIALIST
- \* ROOF PLUMBER no 40647

Restorer of Mooramong; Steam Packet Inn; Como; Rippon Lea; Mulberry Hill; many churches.

Telephone (03) 9543 6713

## KOSNAR'S PICTURE FRAMING AND MIRRORS

Restoration of artworks, photographs, picture frames including regilding. Period Frames, Prints, Mirrors & Etchings.

488 Mt Alexander Road, Ascot Vale.  
Telephone: 9370 5744

## TUCKPOINTING, BRICKWORK, STONEMASONRY RESTORATION & REBUILDING

City & Guilds of London Institute trained craftsman. Over 40 years experience.

**PAUL BURTON**  
0408 343 502 or (03) 9789 7890



SPECIALIST PAINTING  
**TUSCAN TRELLIS**

One of Melbourne's leading specialists in painted finishes.

All periods, styles and projects  
Metropolitan & Regional areas.  
Please call for a folio viewing Rodney & Catherine Ashton.

0419 572 069 / 0419 883 443  
or visit [www.tuscantrellis.com.au](http://www.tuscantrellis.com.au)

## RAPID PAINTING SERVICES

Domestic ~ Interior & Exterior ~ 7-day Service  
Restoration Advice ~ Heritage & Contemporary

Contact: **Max Joffe** - M: 0407 303 388 - Ph: 9563 6363  
Email: [rapidmax@netspace.net.au](mailto:rapidmax@netspace.net.au)

## TESSELATED RESTORATION

Preserve your original Hall, Verandar, or Path.

**PETER IVES** 9801 2930 for professional craftsmanship and courteous service.

## DAMP WALLS

- \* Rising damp permanently cured by damp-course installation
- \* University developed and tested
- \* Over 10000 successful installations Australia-wide since 1981
- \* 25 Year written guarantee
- \* For free inspection, quote and advice

Phone: 9699 8233

# Tech-Dry

Pty. Ltd.

Showroom: 177-179 Coventry Street,  
South Melbourne

## AUTHENTIC AGE

Advice on restoration, alteration and furnishing period houses and heritage buildings.

Telephone: (03) 9818 4324 or  
[www.authenticage.com.au](http://www.authenticage.com.au)



## ROOFING

SLATES, TILES, SPOUTINGS & DOWNPIPES BY

# Steeple Jack Jones

EDWARDIAN, FEDERATION  
AND VICTORIAN ROOF AND  
CHIMNEY RESTORATIONS

0417 556 403  
9543 6713

[www.steeplejackjones.com](http://www.steeplejackjones.com)