



National Trust Group Bookings

For more information email bookings@nattrust.com.au



NATIONAL TRUST
Every moment an amazing story

For more information on any
National Trust group tours contact
us on (03) 9656 9804 or email
bookings@nattrust.com.au

PROPERTIES

Old Melbourne Gaol	3
Polly Woodside	4
Rippon Lea House and Gardens	5
Labassa	6
Como House and Garden	7
The Heights	8
Barwon Park	9
McCrae Homestead	10
Portable Iron Houses	11
Barwon Grange	12
La Trobe's Cottage & Government House	13
Mulberry Hill	14
Mooramong Homestead	15
Gulf Station	16



Polly Woodside

Old Melbourne Gaol

Built in the 1800s to house Victoria's rapidly growing criminal population, the multi award winning Old Melbourne Gaol is one of Melbourne's oldest surviving buildings and one of the city's must-see attractions. Step inside this imposing bluestone institution, a site of over 130 hangings, and enter a world where some of Australia's most infamous criminals were held, including bushranger Ned Kelly and notorious gangster Squizzy Taylor. View the cells, unique exhibits and the collection of death masks. Join the Crime & Justice experience and be arrested by the Charge Sergeant in the Police Watch House.

Old Melbourne Gaol – 377 Russell Street, Melbourne

Tour type	Adult	Conc	Child
General Admission (Valid all day – includes self-guided Gaol Tour & public Watch House Experience)	\$22.50	\$18.00	\$12.00
Gaol Tour (1hr)	\$13.50	\$10.50	na
Watch House and Gaol Tour (1.5hrs)	\$20.50	\$16.50	na





Polly Woodside

The iconic 19th century tall ship Polly Woodside, restored to her former glory, takes you on a journey into Australia's rich maritime history. The Polly Woodside was launched in 1885 in Belfast, Northern Ireland by Workman Clark & Co Ltd. Between 1885 and 1904 the ship made 17 trips to all parts of the world, including South and the US, Africa and Australia, and rounded the infamous Cape Horn 16 times.

Visitors can explore below the decks of the ship and the new award winning gallery. Our theatrette shows a fascinating short film, capturing the voyage of carpenter George Andrews during his first trip across the globe in 1904.

Polly Woodside – 2A Clarendon Street, South Wharf

Tour type	Adult	Conc	Child
Admission & Tour	\$14.40	\$11.70	\$8.50



Rippon Lea House & Gardens

A visit to this 19th century National Heritage listed mansion takes you on a journey back in time and offers a unique glimpse into the lifestyles of the wealthiest Australians of the era. The historic mansion, built in 1868, is located within vast sweeping lawns covering more than 14 acres and features a windmill, lookout tower, heritage orchard, lake, waterfall, fernery, a new children's garden and more.

Rippon Lea House & Gardens – 192 Hotham Street, Elsternwick

Tour type	Adult	Conc	Child
House Tour & Garden Entry	\$13.50	\$10.80	\$8.10
Garden Entry	\$9.00	\$6.30	\$3.60
Garden Tour	\$13.50	\$10.80	\$8.10
House & Garden Tour	\$27.00	\$21.60	\$16.20





Labassa

With its opulent architecture and largely intact original decoration Labassa is one of Australia's most outstanding 19th century mansions. Labassa is a French Renaissance mansion and consists of the finest embossed wallpapers, mahogany timbers and a rare illusionist ceiling enhances the imposing stair hall. Externally, it features Corinthian columns, arcaded verandahs, classical decoration and inset Italian marble panels.

Labassa – 2 Manor Grove, Caulfield North

Tour type	Adult	Conc	Child
House Tour	\$13.50	\$10.80	\$8.10



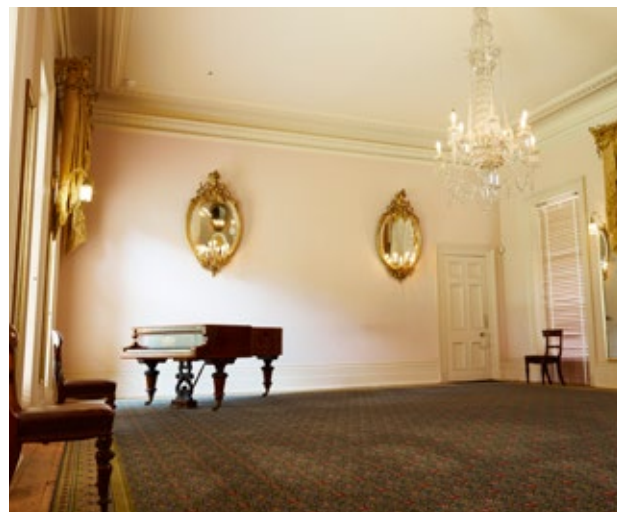
Como House & Garden

Centrally located in South Yarra, Como has been the home of stylish entertainment for Melbourne Society since its construction in 1847.

Boasting one of Melbourne's finest gardens, an inspiring historic mansion and an impressive collection of antique furniture, the property provides a glimpse into the privileged lifestyle of its former owners, one of Australia's wealthiest pioneer families. A visit to Como reveals the life and times of Melbourne aristocracy and offers an insight to the transformation of the city through the Gold Rush, a Depression and two World Wars.

Como House and Garden – corner Williams Road & Lechlade Avenue, South Yarra

Tour type	Adult	Conc	Child
House Tour	\$13.50	\$10.80	\$8.10
Garden Guided Tour	\$13.50	\$10.80	\$8.10
House & Garden Guided Tours	\$27.00	\$21.60	\$16.20





The Heights

Built in 1855 for Charles Ibbotson, this unique dwelling is the largest (14 rooms) German prefabricated house of its kind in Victoria and was home to three generations of the one Geelong family. The extensive garden and outbuildings survive intact from the 19th century. A small collection of fine Georgian furniture collected by the last owners, Louis and Marnie Whyte remains in the house.

The Heights – 140 Aphrasia Street, Newtown, Geelong

Tour type	Adult	Conc	Child
House Tour & Garden Entry	\$9.00	\$6.30	\$3.60



Barwon Park

Visit Barwon Park and be transported back in time as you are guided through this magnificent 42 room bluestone mansion and stables, built in 1871 and largely in its original condition.

As you tour the mansion you will uncover the fascinating story of the Austin family, the original owners of the property and the second family who lived at Barwon Park, the Batsons.

Unique features of this imposing property include: intricate iron work veranda, a grand staircase that dominates the entrance hall, and delicate decorative plaster work. You can also relax in the mansion lawns and take a look through the gift shop.

Barwon Park – 105 Inverleigh Road, Winchelsea

Tour type	Adult	Conc	Child
House Tour & Garden Entry	\$9.00	\$6.30	\$3.60





McCrae Homestead

McCrae Homestead was built in 1844 by Andrew and Georgiana McCrae and is one of the oldest homesteads in Victoria. The home was built using locally available materials and offers a great insight into early pioneering life. Discover the McCrae's struggles as early settlers establishing one of the first farming properties on the Peninsula. Their story is told through original sketches and drawings by Georgiana, artefacts and costumes. The Visitor Centre includes two galleries devoted to Georgiana's art and memorabilia and to the life of the Burrell family who lived on the property from 1851 to 1926.

McCrae Homestead – 11 Beverley Road, McCrae

Tour type	Adult	Conc	Child
House Tour & Garden Entry	\$9.00	\$6.30	\$3.60

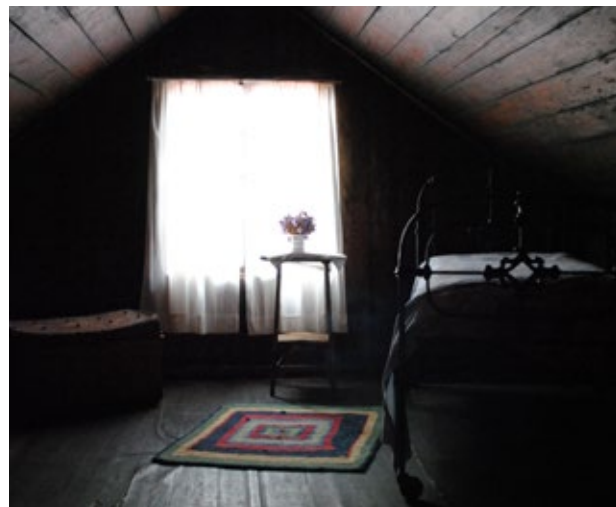


Portable Iron Houses

The three Portable Iron Houses are among the few pre-fabricated iron buildings remaining in the World. During the gold rush thousands of portable buildings were imported from Britain – shops, houses, churches and even a hospital and an iron theatre. This is a unique opportunity for you to explore these original 'kit' homes. The visit includes the opportunity to view an informative DVD on importation of pre-fabricated buildings during the 19th Century.

Portable Iron Houses – 399 Coventry Street, South Melbourne

Tour type	Adult	Conc	Child
House Tour & Garden Entry	\$6.00	\$5.00	\$5.00





Barwon Grange

The majestic Barwon Grange is an elegant suburban villa built along the Barwon River during the 1850s for businessman Jonathan Porter O'Brien. It is the only surviving house of its type from that time. Distinctive features include picturesque gothic architecture, a unique timber veranda and a rare smoking room. The garden has sweeping lawns towards the river and a charming central fountain and circular driveway. Wide verandahs surround the house and include the picturesque conservatory.

Barwon Grange – 25 Fernleigh Street, Geelong

Tour type	Adult	Conc	Child
House Tour & Garden Entry	\$9.00	\$6.30	\$3.60



La Trobe's Cottage and Government House

The tours of La Trobe's Cottage and Government House provide a tangible link between the pre-gold rush and Marvellous Melbourne, giving a fascinating insight into the contract between the two properties and the eras they represent.

Discover Melbourne's rich heritage and the history of its first Lt. Governor, Charles Joseph La Trobe and view the grand State Rooms, the Billiard Room and the old kitchens and mews in Government House.

Please note, as Government House is a working residence and a fully operational building, the Office of the Governor reserves the right to cancel tours. Names are to be provided of all guests attending, photo ID required on the day.

La Trobe's Cottage – Cnr of Birdwood Avenue & Dallas Brooks Drive, the Domain, Melbourne

Tour type	Adult	Conc	Child
Government House Tour Only	\$15.00	\$12.00	\$5.00
Cottage Tour Only	\$15.00	\$12.00	\$5.00
Cottage & Government House	\$18.00	\$13.00	\$10.00





Mulberry Hill

Mulberry Hill is a delightful American Colonial style house, set on 14.5 acres of beautiful gardens and bushland on the edge of the Mornington Peninsula. It dates back to the 1880s and it was the home of artist Sir Daryl Lindsay and his wife Lady Joan. Joan Lindsay is best remembered as the author of the classic novel 'Picnic at Hanging Rock'.

The Lindsays' personal collections of artworks and Georgian furniture are an outstanding feature of the house.

Mulberry Hill – 385 Golf Links Road, Langwarrin South

Tour type	Adult	Conc	Child
House Tour & Garden Entry	\$9.00	\$6.30	\$3.60



Mooramong Homestead

The property is a working farm of nearly 4,000 acres, incorporating the Mackinnon Nature Reserve, home to the endangered Eastern Barred Bandicoot, and other Australian species such as the wedge-tailed eagle, the brolga, kangaroos and wallabies.

It runs 5,000 head of merino sheep, and produces a range of cereal crops.

Mooramong Homestead – Glenelg Highway, Skipton 3361 VIC

Tour type	Adult	Conc	Child
House Tour & Garden Entry	\$12.00	\$12.00	\$12.00
House Tour & Garden Entry (groups of 30+)	\$10.80	\$10.80	\$10.80





Gulf Station

Discover Gulf Station, the Yarra Valley's Pioneering Working Farm. The Bell family began their lives on Gulf Station in the late 1840's and the homestead and outbuildings are a part of the legacy that the family has left behind for you to explore and enjoy. Each of the outbuildings tells an exciting story about the daily life on a pioneer farm, with an array of traditional farming implements waiting to be discovered. Follow the Farm Trail Walk from the Homestead and around the farm buildings to the top of the property to see some magnificent views of the Valley.

Gulf Station, 1029 Melba Highway, Yarra Glen, 3775

Tour type	Adult	Conc	Child
House Tour & Garden Entry	\$9.00	\$6.30	\$3.60





For more information please contact us on (03) 9656 9804
or email bookings@natrtrust.com.au