

NATIONAL TRUST



**Forty-sixth Annual Report
2004 - 2005**

THE NATIONAL TRUST OF AUSTRALIA (WA)

PO Box 1162, West Perth WA 6872
Tel: (08) 9321 6088 Fax: (08) 9324 1571
email: trust@ntwa.com.au



Front page image: HOLIDAY PROGRAM AT NO 1 PUMP STATION

During the April school holidays, the Trust held its first holiday program at No 1 Pump Station. The workshop offered was called *Building The Pipeline* and children aged between 9 and 13 spent a morning learning the types of skills they would have used if they had been employed on a team with CY O'Connor as junior surveyors.

Over a three hour morning session the children built their own theodolite using plumbing fittings and a broom handle. Trust staff ran the program with the assistance of the education coordinator and volunteer Terry Crawford. Once they had made their tools the children used them to measure how much pipe would be needed if the pipeline was to sit within the landscape of Mundaring Weir. They also had a cardboard cut-out Stadia that they took home with them to put together.

The workshop was pronounced a great success by those who attended with each child receiving a Certificate of Appreciation for the work they had done in preparing for the building of the pipeline.

*This report is produced to meet the **statutory obligations** of The National Trust of Australia (WA). Since 1991 this report has been produced at a minimum cost in order to maximise the Trust's effectiveness in helping to conserve and interpret Western Australia's heritage.*

Extracts of this Annual Report will be included in the December Issues of "Trust News" and "Memo to Members" for those members unable to attend the Annual General Meeting on 9 November 2005.

The Annual Report with illustrations will be available on the National Trust of Australia web site www.ntwa.com.au from December 2005.



TABLE OF CONTENTS

President's Report

PART A

- **Compliance Report**
- **Program and Project Reports**

PART B

- **Audit Certification of Annual Accounts**
- **Annual Accounts**

PART C

- **Audit Certification of Performance Indicators**
- **Performance Indicators**

PART D

- **Appendix 1 Properties and Heritage Places**
- **Appendix 2 Publications and Education Resources**
- **Appendix 3 Councillor and Staff Profiles**



PRESIDENT'S REPORT

Once again it is my pleasure to report to the members on the state of the National Trust in Western Australia. The achievements of the Trust over the past year are well documented in the Annual Report. It is a comprehensive document and I commend its reading at your leisure.

Like all annual reports, it follows a prescribed format which is meant to be efficient and effective in communicating a large amount of information. As a document, it does this very well but it can sometimes seem a little overpowering particularly if we are not entirely comfortable or familiar with today's corporate environment. At the Annual General Meeting, I have therefore made it my practice to speak to you as members directly and to highlight those activities of the Trust which I feel are important to you.

The Annual Report remains the primary document of corporate accountability and performance. My comments are perhaps more presented from the perspective that over time has become associated with the office of President – the collective representation of members within the governance of the Trust. The corollary is of course is that I represent the collective achievements of the Trust to its members. It is a duty which I accept with great humility and approach with a high sense of responsibility.

It is from this perspective that I would like to share only one theme with you this year - the state of the National Trust movement, where is it going, what is being planned and how you as members can stay involved and assist.

The National Trust Movement has been a very influential advocate and participant in conserving the nation's heritage for 60 years. Indeed this year saw the 60th anniversary of the Trust in NSW, the 50th anniversary in Victoria and South Australia and the 40th anniversary of the Australian Council of National Trusts. Here in Western Australia the Trust has just entered its 47th year of operation.

When I last spoke to you, I elaborated on the continuity of vision that was evident from the foundation objectives of the National Trust through to the present programs and activities. While it is reassuring to note that the need for a National Trust is as strong as ever and that what we do has stood the test of time, that can't be the end of it. The National Trust is about the future and if as an organisation we are to remain relevant not only to ourselves and our members but also to the community, we must continually examine and constructively review what we do and how we are doing it.



The anniversaries, reflecting the maturity of the National Trust movement have provided both an opportunity and an incentive to carry out this review. The volunteer Councillors and Directors who guide the National Trusts on behalf of the members across Australia have been conscious for some time of the rapidly changing external environments (societal, economic and political) and increasing financial complexities.

It was these significant changes in the external environment, a general public misunderstanding of heritage policies and a growing awareness that there was an inadequate understanding of the National Trust within some areas of government and the community that generated a series of reviews.

PRODUCTIVITY COMMISSION

In April 2005, the Productivity Commission, an independent Commonwealth authority was asked to report on the policy framework and incentives for the conservation of Australia's historic built heritage places. The timing of the Productivity Commission Inquiry was linked to the establishment of the new national heritage system, which commenced on 1 January 2004 following the passage of the 'heritage' amendments to the *Environment Protection and Biodiversity Conservation Act 1999* (hereafter referred to as the EPBC Act). These amendments established two new categories of heritage places—those of 'national heritage value', and those of 'Commonwealth heritage value'. The amendments also emphasised the protection of the natural, historic and/or Indigenous values for which a place has been entered on the National or Commonwealth Heritage Lists, in contrast to previous Commonwealth legislation which sought to identify and protect places.

The National Trust of Australia (WA) participated fully in Productivity Commission Inquiry both through the its own submission and case studies as well as contributions to the submission prepared by the Australian Council of National Trusts.

The National Trust in Western Australia submission made four key observations:

- Historic heritage conservation is a fundamentally important element of Australia's social capital, and this Inquiry provides an opportunity to value that capital, and to identify programs that expand that value.
- In the brief period since European settlement, distinctive cultural landscapes have developed in Australia. These cultural landscapes reflect not only the varied landforms and biodiversity unique to Australia but also the varied responses to these culturally unfamiliar elements. The cultural landscapes of Australia and the historic heritage places contained within them, constitute a singular record of our presence on this continent. The



lessons derived from these historic heritage places also directly relate to the future and a continuing ability to adapt the ways in which communities live on this land.

- As a direct consequence of these unique cultural landscapes, historic heritage conservation plays an important role in developing a sense of national culture and identity. In this context, community well being is directly linked to our sense of community values – what on one hand makes us unique and distinct and on the other what draws us together through shared experiences.
- Informed community participation is the key to development of an awareness, understanding of and commitment to historic heritage conservation. For this point, it was stressed that the National Trust of Australia (WA) had for the past 46 years focused its efforts to bring together communities and governments to promote heritage conservation outcomes. As a “trust” for both government and communities, the National Trust has developed and maintained a leadership role in working in an holistic manner to identify, conserve and interpret heritage places.

The Report of the Productivity Commission is due in April 2006 and the Trust looks forward to its recommendations.

REVIEW OF THE ACNT

As a completely separate exercise, the various state and territory Trusts which constitute the Australian Council of National Trusts (ACNT) undertook a review of our coordinated national operations. As Director your Chairman, Professor David Dolan took and active part in this extensive internal review and as an Alternate Director I also closely followed the discussions and recommendations.

Over its 40 year life, the ACNT has had some successes in fulfilling an advocacy role. For example, in the 1960s the Commonwealth government gave annual administration grants as a result of ACNT and state/territory Trust action. The major success during the 1970s was gaining National Estate Grant funding; and there were special grants as part of the 1988 Bicentenary and the 2001 Centenary of Federation. The ACNT and the UK National Trust established reciprocal rights in the 1960s which is a of great benefit to members. The *Endangered Places Program* has been a recent and successful annual public program. Run in collaboration between the ACNT and the state/territory Trusts, the Program has in raised awareness of the status of some of Australia’s most threatened heritage places.



The Commonwealth government however was seeking to determine if it was getting value for money for its funding support of the National Trust. The Australian Council of National Trusts (ACNT) contracted Minter Ellison Consulting to recommend a future management model providing the ACNT with recommendations which will:

- enhance the effectiveness of achieving nationwide objectives
- identify and delineate roles, responsibilities, functions and operational processes within the Movement ensuring best use of resources covering organisational and financial arrangements
- address the necessary corporate governance and accountability measures, with an emphasis on legal and commercial considerations, to facilitate a new working structure
- improve the way the National Trust Movement conducts its government and non-government stakeholder relations

As you can appreciate a review of this magnitude is not a simple task particularly when the review team had to deal with 8 separate National Trusts. I am pleased to report however that several positive outcomes appear to be emerging. An enhanced presence in Canberra to promote the heritage objectives of the National Trusts was seen as of high importance. Cooperation towards a combined magazine with state inserts to add value to members but also to reduce costs appears to be a distinct possibility. In the coming months your Executive and Council will be giving serious consideration to these proposals.

RELATIONSHIPS WITH THE STATE GOVERNMENT

Many of you may recall that in its first term of office, the current state government undertook a wide ranging review of ministries and portfolios with the object of better achieving service delivery through economies of scale by grouping like with like. This process was entitled the Machinery of Government Review. In December 2001, the Department of Premier and cabinet commissioned Ms Prudence Ford to undertake a review of the national Trust under the Public Sector Management Act as one component of the overall Machinery of Government Review.

In her report of April 2002, Ms Ford made a number of recommendations designed to clarify the relationship between the Trust and Government and to provide a sound basis for the Trust to move forward into the 21st century. Members should be aware that from 1964 when the National Trust was asked by the government to become a statutory authority under an Act until 1990, this need for clarification of relationship was not a major issue. With the formation of the Heritage Council of Western Australia as a regulatory authority under the Heritage of Western Australia Act in 1990 the situation changed.



Increasingly both within government and within the community, there was confusion between the roles and functions of the two entities. Internally while we may have been quite clear as to the community and membership role of the National Trust and the statutory and regulatory role of the Heritage Council, such distinctions were not always apparent to outside parties. The independent role of the National Trust, conceived within legislation as a desirable status was also not seen to sit entirely comfortably within current expectations of ministerial responsibility and control.

The major recommendations of the Ford Review envisaged a revised incorporation for the National Trust not as statutory authority but independent of government as a company limited by guarantee. The National Trust's relationship to government would be determined by service agreements. Under such agreements the National Trust would provide specific heritage services to an agreed standard under a predetermined funding formula. In essence the National Trust would revert to a status roughly equivalent to that which it enjoyed as an association from 1959 to 1964.

You can appreciate that such evolutions if they are to occur are complicated. Over the past several months, Council, Executive and a Re-Incorporation Working Party have been working with consultants, lawyers, Treasury, the Minister for Heritage and ministerial staff to formulate a timetable and roadmap to progress this initiative. It is too early yet to determine the final outcome and the final format of any agreement and defined course of action.

I would like however to bring you up to date on where we are at and which from my perspective is most encouraging:

- For the past 18 months, the National Trust has been developing its strategic plan for the period 2006 – 2010
- This strategic plan will for the first time include a comprehensive business plan with costing of initiatives and implementation time lines
- The service delivery and costings developed for the business plan will form the basis for developing funding agreements with government
- The funding agreements will recognise not only the actual cost of delivering heritage outcomes but will incorporate the cost effectiveness of the National Trust in service delivery in part based on our valued volunteer contribution
- Over the past 12 months the National Trust, primarily through the Re-Incorporation Working Party has developed models and options for re-

NATIONAL TRUST OF AUSTRALIA (WA)
ANNUAL REPORT
FOR THE YEAR ENDED 30 JUNE 2005



incorporation, constitutions, governance, delivery of programs and projects and continuity of core values to work proactively and cooperatively with government whatever policy decisions on relationships are finalised.

I would not be so rash as to predict what the eventual outcome of the current discussions with government will be. I am confident however that the National Trust will remain a positive and dynamic force for heritage and heritage values because it is in every ones' interest that this be the case – governments, community and members. As your President, I commend to you the accomplishment of the past year, I encourage you to stay engaged with our current activities and to promote the interests of heritage through the National Trust and I challenge you to greet the future with a vision for the opportunities and your traditional commitment to the long term.

Associate Professor Jenny Gregory
President

Resolved at the Annual General Meeting of 9 November 2005

The Annual Report be endorsed.

Moved: Associate Professor Jenny Gregory
Seconded: Dr Rosalind Lawe Davies

CARRIED



Statement of Compliance and Relevant Law

The National Trust of Australia (WA) was established in Western Australia in 1959 by a group of concerned citizens who identified the need to actively pursue a heritage conservation ethic for Western Australia. This group grew rapidly and included some of the most prominent citizens in the State. Some five years later an Act of Parliament was passed which formally established the Trust as a statutory body under its formal title of National Trust of Australia (WA) Act 1964-1970.

The Trust is required to meet its legislative requirements, some of which are listed below:

- Anti-Corruption Act 1988 - Reporting under Section 14
- Copyright Act 1968
- Disability Services Act 1993
- Equal Opportunity Act 1984
- Electoral Act 1907
- Financial Administration and Audit Act 1985
- Freedom of Information Act 1992
- Government Employees Superannuation Act 1987
- Heritage of Western Australia Act 1990
- Industrial Relations Act 1979 as amended
- Interpretation Act 1984
- Library Board Act 1951
- Occupational Health and Safety Act 1984
- Public Sector Management Act 1994
- Salaries and Allowances Act 1984
- State Records Act 2000
- State Supply Commission Act 1991
- Workers' Compensation and Assistance Act 1981



Strategic Planning Framework

As a membership based, community organisation, incorporated under its own Act of Parliament, the National Trust of Australia (WA) remains conscious of its multiple facilitation, service, access, and accountability requirements. This section of the Annual Report outlines customer group outcomes and is consistent with the State Government's Guidelines on Agency Strategic Management.

GOAL 1: PEOPLE AND COMMUNITIES

1.1 Agency Specific Reporting

Women in Management Outcomes

The National Trust of Australia (WA) continues to exercise leadership in providing career opportunities within heritage management. Of the 23 staff employed (full and part time) by the Trust at Head Office during the financial year, 14 are women. Two of 7 senior management positions (Level 6 or higher) are filled by women.

Skills Development

The National Trust has a commitment to the development of its employees and volunteers. During the financial year, training and professional development was undertaken to ensure staff had the required skills and to provide career progression opportunities.

Workshops and training were provided to volunteers exercising governance and advisory responsibilities within the National Trust. Customer service training and support was provided to volunteers in contact positions with guests and visitors to heritage properties.

Ongoing training and research was conducted at properties in support of volunteer guides who provide orientation and interpretation at heritage properties.

Equal Employment Opportunities

The National Trust of Australia (WA) is an equal opportunity employer and has complied with all relevant guidelines in the open and transparent advertisement and filling of staff vacancies.



Human Resource Minimum Obligatory Information Requirements.

The National Trust provided information on staffing to the Public Sector Management Division as part of its fulfillment of the Human Resource Minimum Obligatory Information Requirements.

Evaluations

The National Trust of Australia (WA) participates in national evaluation programs conducted periodically by the Australian Council of National Trusts. No programs of this type were conducted in the reporting period.

The National Trust of Australia (WA) conducts periodic evaluations of members and stakeholders using standard baseline question banks consistent with national evaluations. No evaluations of this type were conducted during the reporting period.

The National Trust of Australia (WA) utilises web-based evaluations, surveys and feedback to obtain information and community input on specific heritage issues. These evaluations are supplemented by community surveys in the same format.

The outcomes from these evaluations are used to formulate policy, guide interpretive activities, set parameters for ongoing consultations and to track community understanding of heritage issues.

The National Trust of Australia (WA) developed and continues to use a standard visitor evaluation for its heritage places. The format was adopted as a national standard by the Australian Council of National Trusts.

1.2 Obligatory Reporting

Disability Services Plan

The National Trust Disability Services Plan remains in effect. The Membership and Volunteer Services Committee reviewed the Plan during the financial year. National Trust headquarters is accessible by disabled persons and appropriate special needs parking is provided.

The ground floors of National Trust heritage properties open to the public are wheelchair accessible and equivalent visit experiences are offered where access is not possible to upper floors. A number of training seminars incorporated sessions to ensure that staff and volunteers were aware and understood the needs of persons with disabilities.



Youth Outcomes

The *Tour Through Time* secondary education programs are specifically designed for 14 – 18 year olds in accordance with curriculum outcomes. The program was promoted to teachers, parents and students at *WA On Show* and continues to be the focus of National Trust education programs for this target group.

Interpretation at National Trust properties is continually updated. At the York Courthouse Complex and the Central Greenough Historic Settlement, new interpretive approaches incorporate contemporary presentations, imagery and style appealing to all age groups but with a particular appeal to young people in the 18 – 25 year target group. Outcomes and impact is being evaluated through revised visitor evaluation programs.

Ongoing liaison continues with local communities, advisory committees, funding and arts agencies to develop programs, concerts and events which will attract non-traditional audiences, youth and families to heritage places. An extremely successful partnership with the Shire of York was expanded during the year. With the support of the Youth Advisory Council and the York Film Society, it was possible to get the long awaited outdoor movies shown in the stableyard. Youth involvement included all aspects of event coordination and presentation. Extensive evaluation was undertaken and it was quite evident that the community is supportive of the concept. As a consequence the Trust and the Shire will be developing grant applications to fund the required equipment and facilities with a view to having a even more ambitious film season next summer.



GOAL 2: THE ECONOMY

2.1 Obligatory Reporting

Anti-Corruption Commission Act 1988

The National Trust has complied with the reporting requirements associated with section 14 of the Anti-Corruption Commission Act 1988.

Waste Paper Recycling

Individual and bulk recycling bins are available at National Trust headquarters. Collections are managed through contractors and the City of Perth. As part of the National Trust's conservation role, a recycling ethic has been established within the workplace.

Energy Smart Program

Although the National Trust falls below the reporting threshold for the Energy Smart program, the principle of energy conservation has been accepted as a work place ethic. Conservation work has resulted in the restored ability to open office windows to reduce energy requirements for temperature control. Long life/high efficiency light globes have replaced standard globes where practical.

Planning commenced on re-wiring and electrical safety program at National Trust heritage places. These plans include initiatives to reduce electrical hazards arising from outdated infrastructure and to reinstate services to meet current use needs more efficiently. Implementation will be funded during the next three financial years.



GOAL 4: THE REGIONS

4.1 Agency Specific Reporting

Regional Partnerships

The National Trust works extensively with local government in the conservation and interpretation of places of heritage significance. Partnering Agreements or similar undertakings exist with the following local government authorities or government agencies:

Bridgedale – Shire of Bridgetown-Greenbushes

Central Greenough – Shire of Greenough

Ellensbrook – Department of Conservation and Land Management

Mill Manager's Residence – Shire of Serpentine-Jarrahdale

The Golden Pipeline project works in partnership with the following local government authorities to promote heritage, community and commercial outcomes along the Golden Pipeline Heritage Trail and associated sites:

Shire of Kalamunda

Shire of Tammin

Shire of Mundaring

Shire of Merredin

Shire of Northam

Shire of Westonia

Town of Northam

Shire of Yilgarn

Shire of Cunderdin

Shire of Coolgardie

Shire of Kellerberrin

City of Kalgoorlie-Boulder



GOAL 5: GOVERNANCE

5.1 Agency Specific Reporting

Accountable Minister

The National Trust is included within the responsibilities of the Minister for Heritage. It is through the Minister for Heritage that the Trust's Annual Report to Parliament is submitted to Parliament and accountability is exercised for appropriations.

The National Trust of Australia (WA) also maintains positive working relationships with other Ministers and Ministries whose responsibilities intersect with the wide range of Trust activities including public sector management, citizenship and multicultural interests, agriculture, forestry, local government, the Regions, planning and infrastructure, tourism, economic development, education, sport and recreation, indigenous affairs, community development, culture, the environment, the arts, seniors and youth.

Through a holistic approach to heritage, the National Trust of Australia (WA) programs, projects and community involvement affect or come in contact with virtually all areas of government and ministerial activity.

Professional Development

The National Trust continues to promote professional development and continuous improvement in the area of corporate governance.



5.2 Obligatory Reporting

Advertising and Sponsorship

In accordance with section 175ZE of the Electoral Act 1907 and the Treasurer's Instruction 903, The National Trust of Australia (WA) reports that expenditures were incurred in advertising, market research, direct mail and media advertising.

There were advertising expenditures of under \$ 10 000 during the financial year. This expenditure was related to statutory requirements, death notices, advertisement for the sale of property, calls for tender, advertising for staff, committee and Council positions and the promotion of National Trust community events and members activities through metro, regional and community newspapers.

There were no expenditures to polling organisations.

There was a total expenditure of under \$10 000 for the mailing of *Trust News* and *Memo to Members* through the National Trust's contracted printer, Daniels Printing Craftsmen and Australia Post.

Code of Conduct / Public Sector Code of Ethics

The National Trust during the financial year has updated its Code of Conduct to reflect changes in the Public Sector Code of Ethics. Briefings on the Code of Conduct and the Public Sector Code of Ethics were incorporated into the staff and governance induction packages.

Elections to the Council of the National Trust

Elections to the Council of the National Trust are conducted through the services of the Western Australian Electoral Commission in accordance with the Rules of the National Trust. In 2004/05 there were three available vacancies.

Information Statement

The National Trust Information Statement was reviewed and updated during the financial year. Copies of the statement are available on-line and through the intranet. Staff and volunteers are briefed on the Information Statement and its role in facilitating public access to information as part of their induction process.

Anti-Corruption Commission Act 1988

The National Trust has complied with the reporting requirements associated with section 14 of the Anti-Corruption Commission Act 1988.



Occupational Health and Safety

No claims for worker's compensation were made during the year, no health or safety issues arose for attention and there were no lost time incidents.

Public Interest Disclosures

The National Trust received no requests for information under Public Interest Disclosure provisions during the financial year.

Freedom of Information

The National Trust received no requests for information under the Freedom of Information Act during the financial year.

Compliance with Public Sector Standards

Under the Public Sector Management Act, 1994 the National Trust reports on compliance with Public Sector Standards, Codes of Ethics and any relevant Code of Conduct.

Record Keeping

The National Trust Record Keeping Plan in accordance with the timetable contained in the State Records Act 2002 was cleared on 7 October 2004.



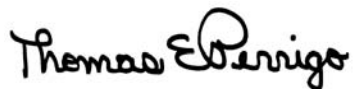
Compliance Reporting Requirements 2004/2005

1. In the administration of the National Trust of Australia (WA), I have complied with Public Sector Standards in Human Resource Management, the Western Australian Public Sector Code of Ethics and the National Trust of Australia (WA) Code of Conduct.
2. The National Trust of Australia (WA) has put in place procedures designed to ensure such compliance and conducted appropriate internal assessments to satisfy itself that the statement made in 1 is correct.
3. The applications made for breach of standards review and the corresponding outcomes for the reporting period are:

Lodged	Found	Under Review
nil	nil	nil

Compliance Statement

In accordance with the provisions of the Financial Administration and Audit Act 1985, I hereby submit for your information and presentation to Parliament the Annual Report of the National Trust of Australia (WA) for the year ended 30 June 2005.



Thomas E Perrigo
Chief Executive Officer
31 August 2005



PROGRAM AND PROJECT REPORT

National Trust of Australia (WA): Our Organisation

In 1959, six interested citizens formed a convening committee to establish the National Trust of Australia (WA). This committee called a foundation meeting attended by thirty-five members and seventeen visitors and by November that year had elected a Council and made arrangements to incorporate. In 1964 the National Trust of Australia (WA) Act was proclaimed by the Trust's Patron, His Excellency the Governor of Western Australia.

There are 32 objects set out in the National Trust of Australia (WA) Act Among the most important objects are:

- the identification of places and things of national and local importance: in particular, our natural flora and fauna and historic buildings, monuments and objects;
- the education of the public in the existence of these places and things; and
- the stimulation of interest, appreciation and enjoyment in the work of identification, assessment, restoration and conservation.

Vision Statement

The National Trust of Australia (WA) will be the pre-eminent independent community body promoting the conservation and interpretation of Western Australia's unique heritage and educating the community about the use of cultural heritage (built, natural and indigenous) for the long-term social, economic and environmental benefit of the community.

Mission Statement

Through a process of consultation with the Council and staff of the National Trust, the Trust's Mission Statement was adopted to reflect this organisation's continued development as a role model for best practice standards in heritage conservation and interpretation.

The National Trust of Australia (WA)
will conserve and interpret
Western Australia's heritage.



National Trust Governance

Patron

His Excellency Lieutenant General John Sanderson AC,
Governor of Western Australia

Australian Council of National Trusts

The Australian Council of National Trusts is a corporate entity established by State and Territory Trusts to coordinate specific activities at a national level. The National Trust of Australia (WA) appoints representatives to attend and vote at all general and extraordinary general meetings of the Australian Council of National Trusts and at all meetings of the Board of the Australian Council of National Trusts until such time as such appointment shall be revoked.

The current representatives are Professor David Dolan, Chairman of Council and Mr Thomas Perrigo, Chief Executive Officer.

Council Of The National Trust Of Australia (WA) 2003/2004

The Council is the governing body of the National Trust of Australia (WA), establishing policy and overseeing activities. By statute, it consists of 25 members, 16 of whom are elected from within the National Trust and nine of whom are appointed by nominating organisations.

NATIONAL TRUST OF AUSTRALIA (WA)

PROGRAM AND PROJECT REPORT
FOR THE YEAR ENDED 30 JUNE 2005



Elected Councillors

In accordance with Section 10(1)(a) of the National Trust of Australia (WA) Act 1964-70, 16 councillors are elected in accordance with the Rules of the National Trust from amongst the members of the Trust. Terms conclude following the Annual General Meeting in the year of expiry. As at 30 June 2005, these Councillors were:

Office	Name	Expiry of Term
Chairman	Prof David Dolan	2007
Deputy Chair	Mr Nicholas Wells	2007
President	Assoc Prof Jenny Gregory	2007
Vice President	Dr Rosalind Lawe Davies	2007
Vice President	Dr Robyn Taylor	2005
Secretary/Treasurer	Paul Setchell OAM	2007
Councillor	Hon Julian Grill	2007
Councillor	Mrs Peggy Clark	2006
Councillor	Mr Michal Lewi AM	2005
Councillor	Mr Geoff Moor	2005

The positions of Chair(man) of Council, Deputy Chair(man) of Council, President, two Vice Presidents, Treasurer and Secretary are filled by election, by Councillors from nominations presented by elected Councillors. Terms of office for these positions are annual and normally run concurrently with the calendar year.

NATIONAL TRUST OF AUSTRALIA (WA)

PROGRAM AND PROJECT REPORT
FOR THE YEAR ENDED 30 JUNE 2005



Appointed Councillors

In accordance with Section 10(1)(b) of the National Trust of Australia (WA) Act 1964-70, nine Councillors shall be appointed by the Trust from organisations who shall nominate a representative. Normal procedure is for the nominating organizations to review these appointments every three years. As at 30 June 2005, the Appointed Councillors were

Appointed By	Name
The Premier & Treasurer	Appointment pending
The Senate of the University of Western Australia	Mr Christopher Vernon
The Royal Western Australian Historical Society	Dr Lenore Layman
The Royal Australian Institute of Architects (Western Australia Chapter)	A/Prof John Stephens
The Royal Society of Western Australia	Dr Jamie O'Shea
The Country Women's Association of WA	Mrs Alice Adamson
The Tree Society of Western Australia (Inc)	Association no longer operative
Western Australia Local Government Association)	Mr Frank Alban
Western Australia Tourism Commission	Prof Ross Dowling

NATIONAL TRUST OF AUSTRALIA (WA)

PROGRAM AND PROJECT REPORT
FOR THE YEAR ENDED 30 JUNE 2005



Head Office Staff of the National Trust of Australia (WA) at 30 June 2005

Chief Executive Officer	Mr Thomas Perrigo
Office Manager	Ms Shelley Bertola, JP
Manager, Golden Pipeline	Ms Anne Brake
Admin Assistant – Support Services	Mr Graeme Bridge
Finance Officer – Accounts Receivable	Ms Skye Cattle
Manager, Natural Heritage	Mr Alan Briggs
Admin Assistant – Golden Pipeline	Ms Haley Chandler
Manager, Finance & Audit	Mr Pasquo Cirillo
Admin Assistant – Natural Heritage	Ms Laura Colman
Finance Officer	Mr Con Contos
Interpretation Officer, Golden Pipeline	Ms Diana Frylinck
Coordinator Information and Heritage Services	Mr Karl Haynes
Executive Assistant	Ms Kymberley Horsely
Finance Officer – Accounts Payable	Mr John Kirk
Customer Service Officer - Reception	Ms Zoe Lawrence
Coordinator Education	Ms Joy Lefroy
Covenanting Officer	Ms Sophie Moller
Manager, Membership and Volunteers	Mr Robert Mitchell UE, CD
Manager, Properties and Collections	Ms Sarah Murphy
Administration Assistant – Deputy CEO	Ms Terry Parsons
Conservation Architect	Ms Kelly Rippingale
Manager Special Projects, Deputy CEO	Mr Enzo Sirna
Heritage Officer	Ms Helena Waldmann

In addition to the staff listed, the National Trust has staff on both short-term contracts and on a casual basis at its heritage properties.

NATIONAL TRUST OF AUSTRALIA (WA)

PROGRAM AND PROJECT REPORT
FOR THE YEAR ENDED 30 JUNE 2005



Our Values

<i>Accountability:</i>	Having processes, which are completely transparent and defensible.
<i>Commitment:</i>	To excellence and improvement.
<i>Competence:</i>	To be effective and efficient.
<i>Integrity and Respect:</i>	Listening to the opinions and aspirations of employees, members and volunteers.
<i>Loyalty:</i>	To ourselves & the National Trust of Australia (WA).
<i>Pride:</i>	In the National Trust's history and achievements.
<i>Teamwork:</i>	By working together with the community and other bodies, and valuing each individual's contribution.

Legal Services Provided Free of Charge

Support from the Trust's Honorary Solicitors continues to be strong and very greatly appreciated. The following firms have provided substantial support in their roles as Honorary Solicitors of the National Trust of Australia (WA):

Clayton Utz
Environmental Defenders Office
Hardey Bowen
Ilbery Barblett
Jackson McDonald
MacLeod & Co Solicitors

Government Services provided free of charge:

Midland Redevelopment Authority* not assessed

*assistance with storage of the Trust's collection at Midland Railway Workshops



PROGRAM AREA: PROPERTIES & COLLECTIONS

Key Objective

To conserve and interpret the Trust's heritage places and objects.

Key Strategies

- Manage the Trust's heritage assets to approved standards of excellence.
- Improve visitor experiences through adoption of best practice interpretation and the recognition of the education, tourism, social and recreational values of Trust places and objects.
- To assist in developing community knowledge, awareness, understanding of and commitment to heritage places and objects.
- To develop and maintain standards of documentation and conservation to assist in the management of the Trust's heritage assets.
- To acquire, rationalise and maintain heritage assets in accordance with the Trust's mission and objectives.

Features of the 2004/2005 Program

The Properties and Collections program area continues to be managed by Sarah Murphy (Manager). Kelly Rippingale (Conservation Architect) is now dealing with the management of conservation works at Artillery Drill Hall and John Curtin's House, advising on general asset management issues, and the establishment of risk management procedures for the Trust in addition to her work within the Golden Pipeline Project.

The Properties and Collections program covers property management related work from grant administration through to lease arrangements, maintenance, security and pest control. In addition it is responsible for all curatorial and interpretation issues in addition to building conservation, liaison with architects and Work for the Dole teams.

While numerous property-specific activities and projects were undertaken throughout the year there was a great deal of work done that affected the whole portfolio. There was a rationalisation of property insurances and with it a revision of property titles in order to standardise them for internal consistency. A review of security call-out arrangements was undertaken so as



to reduce the number of unnecessary after hours calls to the program Manager.

A brief was developed to form the basis of an application to Lotterywest for the development of detailed interpretation guidelines for the profession. If funded the project will involve a reworking of the Trust's existing guidelines so that they are applicable to a broader range of institutions and projects. A considerable effort was put into the development and implementation of Risk Management processes. This work will be ongoing and in time detailed risk assessments will be prepared for every property.

Preliminary visits were made to the Pinjarra Courthouse and the Royal George Hotel as both these properties were acquired by the Trust during the year. The Courthouse will be used by a community policing and a number of local groups. Conservation works, particularly relating to structural work, will be carried out early in 2005/2006. The Hotel will be leased to the Town of East Fremantle for a year and the artists who have been based there for some years now will continue as tenants. The essential conservation works needed are expected to be funded through a series of grants.

Sarah Murphy and Kelly Rippingale went to Canberra in May to attend National Trust meetings regarding the Productivity Commission and give a paper at a seminar the focused on House Museums and Sites. They reviewed a compliance audit carried out for Fonty's Pool, Manjimup with a view to a possible involvement by the Trust. Kelly held discussions with the architect for the Luisini Winery conservation works regarding safety and heritage issues.

Sarah Murphy, was overseas on holiday during December and January. She met with staff of the Historic Houses Trust of New York City and liaised with property staff of the National Trust for Historic Preservation. She visited a wide range of heritage places and museums in Hawaii, New York, Washington DC, California and Nevada.

Collections Management

The major activity for the year surrounded the completion of the Collection Assessment Project. The team for Museum Planning Services Australia worked solidly for nine months, more often than not seven days a week, to get the project completed. The objective of the project was to prepare an inventory and assess the significance of the 6,000 objects that are kept in storage.

The purpose behind this is to allow the Trust to make informed decisions about the future of the collection. It is anticipated to result in an active deaccessioning program and a more manageable and well-utilised collection store. It will also assist the Trust in examining its collection strengths and



weaknesses, to be more strategic with future acquisitions and to guide future updates of the Collections Policy.

Overall the storage and care of collections in storage represents a substantial investment of resources on an ongoing basis. While inadequate care and attention is paid to these collections, they continue to pose a major liability, and place the Trust in the unenviable position of being unable to fulfil its obligations to donors and indeed its undertakings to the people of Western Australia.

The Trust continues to be indebted to the Midland Redevelopment Authority for its generous provision of a collection storage facility.

Short-term loans were made to the City of South Perth and the Perth International Arts Festival. Loans renewed included those to Ministerial offices, Parliament House, the Heritage Council of Western Australia, and the City of Nedlands (Gallop House).

Work for the Dole

Funded by the federal Department of Employment and Workplace Relations and managed by Westnet Employment Services, the Work for the Dole programme continued to be of inestimable value to the Trust. Each of the teams comes with an experienced supervisor and there are up to thirty participants per team. The Trust is required to provide tools, equipment, and access to a telephone, toilets and so on. This year teams have been based at the East Perth Cemeteries/Old Observatory and the Mill Manager's House at Jarrahdale.

Together the teams have contributed many hours of labour over the past year. Much of the work has been labour intensive, involving many tasks that can only be done by hand. Without the assistance of the Work for the Dole programme through Westnet Employment Services the Trust would have been unable to afford the work that has been done.

In all cases the quality of the training and guidance given to the participants by the individual project supervisors has been outstanding. Consequently it was with some regret that the Trust received the news that Mick Johnson from Westnet had resigned in mid-July. Mick has supervised projects at Woodbridge, Blythwood, No 1 Pump Station and Jarrahdale and has been involved with the Trust for over five years. His contribution alone has been substantial and he will be greatly missed.



Public Education/ Promotion/ Professional Contributions

Sarah Murphy gave talks to a number of organisations during the year including TAFE Interior Design students, Soroptimist International, Curtin University Cultural Heritage Studies students and University of Western Australia archaeology students. She continued to serve as the Chair of the Administration Panel for the Lotteries Commission Cultural Heritage Interpretation Grants program and as a member of the grant assessment panel.

Thanks and Recognition

The Trust manages a huge portfolio of properties, each with its own specific needs and issues. The Trust's professional staff plays a key role in sourcing grant funds, managing budgets, long term planning and ensuring that the conservation and interpretation of these places is in keeping with accepted international heritage practice. The professional staff are just some of the many people who work behind the scenes to help ensure that the Trust's properties are conserved on behalf of current and future generations.

On a day-to-day basis teams of dedicated and passionately committed volunteers care for the properties. Working with scarce resources and within the confines of a myriad of heritage constraints, the volunteers are the public face of the Trust. Without them most of the properties would not be able to open to visitors and a great deal of hands-on work just would never be done. A small handful of properties have staff employed as casuals or wardens. These staff also undertake a great deal of volunteer work on behalf of the Trust and they too are truly dedicated.

A range of heritage conservation practitioners also supports the work of the Trust. These people include architects, stonemasons, painters, carpenters, conservators, historians, landscape architects, archaeologists, and many other professions and trades. All these specialists are experts in their fields and use their expertise and passion to work with the Trust in helping to ensure that the properties are in sound physical condition, well researched and understood by those who visit them.

The National Trust of Australia (WA) is indebted to its staff, volunteers, Work for the Dole supervisors and participants, and a wide range of conservation specialists. Without this seemingly complex mix of people, driven by their love for their work, a large part of Western Australia's cultural heritage would not be here now or in the future.



PROPERTY SUMMARY

Albany Fish Traps

The National Trust continues to be the guardian of this place, working closely with its original owners and the Department of Aboriginal Affairs in Albany in relation to its management and care. A working group has been established to prepare a Conservation Plan for the place and to facilitate the transfer of the place back to the traditional owners.

Open access site – no visitor figures available

Artillery Drill Hall

The place continues to be leased by the Fly By Night Club as a popular live music venue that is visited by up to 500 patrons per event.

A range of conservation works has been undertaken during the year including extensive pest control inspection and treatment to arrest live activity. Major electrical work was undertaken to address compliance and safety issues. This, along with structural and drainage works funded through a Lotterywest grant was completed in May 2005 by Rosella Builders and administered by Heritage and Conservation Professionals.

A team of Master Painters Association apprentice students painted several office areas within the building. The office used by the lessee, the Fly By Night Club, was relocated during the course of the project. Discussions are being held between the lessee and potential new tenants for the now vacant upper floor. Discussions were held with the Perth Area Consultative Committee regarding support for a regional partnerships application, and with the Department of Culture and the Arts regarding funding opportunities through the Community Cultural and Arts Facilities Fund program. There have also been meetings with the City of Fremantle's conservation architect regarding partnership opportunities.

In May a grant was awarded to the Trust by Lotterywest to cover the development of interpretation plans for the Old Perth Boys School, along with the Artillery Drill Hall, East Perth Cemeteries, and Tranby. Part of the project includes the development of a statement of interpretation philosophy that can be applied to other properties in the future. The draft of the interpretation plan for the Artillery Drill Hall was received and it is hoped that funding opportunities will arise during the course of next year to enable progress to be made in implementing the plan.

Revision of the conservation plan, originally prepared in 1994 by Heritage and Conservation Professionals is being prepared by that consultancy with Kristy



Bizzaca historian. The updated plan will include a greater focus on the social significance of the place and assess any changes to condition, authenticity and integrity over the past ten years.

Leased as a music venue – 22,708

Bridgedale

The day-to-day management of the property has continued at the hand of the Shire of Bridgetown-Greenbushes. The partnership arrangement between the Trust and the Shire continues as the overarching management approach to the property. No major activities were carried out during the year.

Recorded visitors for 2004/2005: no figures provided by the Shire

Central Greenough

It was another year of major activity at this property with the undertaking of Stage Two of the interpretation plan. The works were funded by the Commonwealth through a Regional Partnerships grant of \$213,400 and financial contributions by the Trust and its partner in the project, the Shire of Greenough. The Greenough Regional Prison also participated in the project. The consultant team comprised Mulloway Studio, Paul Kloeden, Philip Palmer and Exhibition Services.

St Catherine's Hall was the focus of the interpretation works. Interviews with locals recalling weddings, dances and other functions in the Hall were documented and became the core of a film that is shown on a continuous basis. Photographs, memories and historical information about this significant part of life in Greenough back it up and a piano plays a couple of selected melodies from the Hall's glory days. In early June some 80 people from the local "Front Flats" community attended a dance that 'reclaimed' the building as a vital part of local life. The dance was filmed and will be incorporated into the film developed as part of the interpretation project.

An entry statement was designed, manufactured and installed along with directional signage and the marking of the central roadway with the names of the heritage buildings. Lighting was installed at St Catherine's Hall, large leaning tree silhouettes were erected and the car park upgraded. This stage of work has added immeasurably to the visitor experience at Central Greenough. Not only has it added context to the first stage of the project, it has provided an opportunity for increased community use of the place and enabled people to more fully appreciate the heritage and contemporary significance of St Catherine's Hall.



In June, Palassis Architects was awarded a commendation in the Heritage category of the Architecture Awards held by the Royal Australian Institute of Architects. The Café and Visitor Information Centre building, now two years old was designed as an addition to the previously reconstructed Greenough Store in order to provide first class services for visitors and locals alike. In accordance with best conservation practice, the building is readily identifiable as a new, not old building. The design does however pay careful respect to its location. It is sited so as to minimise its impact on the historic buildings and streetscape, while maximising the view from inside.

The seamless and complementary blend of the new building with the interpretation works that have been undertaken by Malloway Studio/Paul Kloeden over the past two years were evident in the jury comments: *“The Greenough Café and Visitor Information Centre has included the conservation of a small former store building within a larger development, and has been carefully and sympathetically undertaken. Article 25 of the Burra Charter points out that the cultural significance of many places is not readily apparent, and should be explained by interpretation. The interpretation aspects of this place are skillfully presented, with highlighted features enhancing the visitor’s understanding and enjoyment of the place.”*

The Trust was awarded a Lotterywest grant of \$10,810 to prepare a conservation plan for St James’ Church. It is expected that Eastman Poletti Sherwood Architects will commence the project late in 2005 and be completed within a few months. Following that, applications will be submitted for funding with which to carry out essential conservation works to the place.

One of more rewarding outcomes of the year has been the strengthening of the Trust’s relationships with its partner, the Shire of Greenough. Quarterly partnership meetings have ensured that activity continues at Central Greenough and that community feedback is incorporated into planning. The Greenough Regional Prison has been a great supporter of the National Trust and has ensured that the gardens around the Café building have thrived.

Recorded visitors for 2004/2005: 4,874

Dongara Flour Mill

As previously reported, the National Trust intends selling the building for which it has no future use and insufficient resources to care for in the longer term. The Flour Mill will be sold with a Heritage Agreement in order to ensure that any future development of the building did not compromise or diminish its cultural heritage values.



Open access site – no visitor figures available

East Perth Cemeteries

Meetings were held with Perth Monumental Works to assess the company's ability to undertake headstone conservation at East Perth Cemeteries. Work based on the treatment guidelines developed by the Western Australian Museum's Conservation Department was undertaken on three graves and the conservation was funded through donations made by family members. The interior lightings were completely re-fixed and tested for safety. The Work for the Dole continued to assist with grave conservation through its weeding of graves and general grounds management. The Soroptomist Society also volunteered some time to help with weeding as it does each year.

A team of three volunteers continues to work on the development of a database of graves and associated inscriptions. This information will become more readily available to visitors over time. Grant funds have been sought to make the data accessible through the Trust's web site.

The Anglican Church, through Reverend Braden Short, has commenced regular services at St Bartholomew's Chapel. Such activity is greatly encouraged as it ensures that the building continues to be used for its original purpose. The congregation has been steadily building and it is hoped that this will continue.

The conservation plan was reviewed and updated by Fiona Bush, Philip Palmer and Ron Bodycoat. It successfully combined well-researched documents from the past with new analysis and contemporary heritage management. The result is a comprehensive plan that will aid the conservation and long-term management of this exceptional heritage place for some time into the future. It also coincided with the commencement of the interpretation plan. It was therefore possible for the first time to test the long held desire to ensure complete compatibility of thought between the two documents. The outcome has been a more focused conservation plan and a more fully considered holistic approach than may have otherwise been possible.

In May a grant was awarded to the Trust by Lotterywest to cover the development of interpretation plans for the Old Perth Boys School, along with the Artillery Drill Hall, East Perth Cemeteries, and Tranby. Part of the project includes the development of a statement of interpretation philosophy that can be applied to other properties in the future. The draft interpretation plan for the Cemeteries was received. It proposes an array of understated approaches to revealing the significance of the place to visitors. At a more ambitious level it acknowledges the desperate need for basic volunteer and visitor facilities at



the property. The implications of the plan will be investigated in detail during the coming year.

As with many of the properties there is a range of interesting things that arise during the course of a year. Mike Featherstone from the Geological Survey Department visited the property as part of a study he is undertaking into weathering of stone by testing the headstones against past weather patterns. A piece of bone was found adjacent to a grave in the Catholic cemetery and, following a radiographic investigation and then later examination by a veterinarian was identified as being part of the rear leg of either a dog or fox.

Recorded visitors for 2004/2005: 549

Ellensbrook This property continues to attract a steady number of visitors, particularly since the last few kilometres of the access road was sealed. Maintaining a reliable power supply to the Warden's residence is a constant challenge and expense to the Trust. The close proximity of the place to the ocean creates ongoing problems with the generator. It is expected that mains power will be supplied next year.

Recorded visitors for 2004/2005: 1,414

Herdsmen Lake Settlers Cottage

The severe shortage of volunteers that forced the property to close last year has continued. The Trust has continued to investigate other suitable community based uses for Settlers Cottage that will ensure that its heritage values are not adversely affected. Meetings were held with two groups during the year but the property wasn't the best match for either. For a period of six weeks each Saturday morning a bird-banding group has been using the property as part of its research into the bird population of Herdsmen Lake.

Recorded visitors for 2004/2005: 120 (booked tours)

The Hermitage

The building continues to be rented out as a residential property, a use compatible with its original construction and intent. This has provided funding with which to offset some of the costs associated with the property.

Leased as a private residence - not open for general visitation



Jarrahdale

Work for the Dole has made a significant impact at the Mill Manager's House undertaking tasks such as restumping the western side of the house, repairing balustrades, removing earth from against the external walls and stabilisation of an outbuilding. Kelsall-Binet Architects completed the conservation plan for the Mill Manager's House funded with grant funds from the Lotteries Commission.

A new lease for the 1949 timber mill was signed and discussions were held regarding the storage of logs on the site and the need for addition buildings. A Lotterywest grant of \$60,404 was awarded towards the end of the year will be used to replace the second half of the roof, a project commenced in the previous year. The new roof will go a long way towards ensuring that the fabric of the building can be kept dry (and thus better conserved) in addition to the machinery and the people who work in it.

The partnership between the Trust and the Shire of Serpentine-Jarrahdale for the Jarrahdale Heritage Park continues to thrive and strengthen. The Working Group has been maintaining progress on implementation of the master plan and has commissioned a series of specialist studies including a traffic management plan, an archaeological survey and a detailed plan for the design of an amphitheatre.

A detailed consultant brief for an interpretation plan for the Heritage Park was prepared by the Trust. While the Serpentine-Jarrahdale Shire funded the majority of the plan, the Trust also made a financial contribution to the project. The successful consultant team, Arbor Vitae, completed the plan late in the year after a great deal of consultation with key stakeholders. The plan is being reviewed with a view to developing a priority list of projects for which funding can then be sought.

Open access site – no visitor figures available

John Curtin's House

Preliminary cost analysis was carried out with a view to utilizing the house for short-term rental following discussion with a local agent. It was later decided that the house could be well utilized in the short term by certain volunteer heritage groups within the Trust including the Defence Heritage and Art Deco Committees.

A range of conservation, maintenance works and services installation were undertaken during the year including the completion of roof tiling and roof plumbing replacement, the repair of the garage door and the start of painting of the door and fence. A security system was commissioned, furniture and



computers installed and the house made stable and comfortable for a number of Trust activities.

Work in Progress - not open for general visitation

Moir Homestead

A Lotterywest conservation grant of \$50,370 was awarded for stonework stabilisation of the blacksmith's shop and the temporary propping of some unstable walls of other outbuildings. Considine and Griffiths Architects is supervising the works being undertaken by a highly experienced and enthusiastic Esperance based stonemason.

Open access site – no visitor figures available

Old Blythewood

Meetings have been held with consultants who are carrying out an interpretation consultancy on behalf of the Shire of Murray. The Lotterywest funded project involves the development of listening posts or soundscapes at Old Blythewood, Edenvale and Fairbridge. All three heritage places have strong connections with the McLarty family and the project aims to make linkages between them to assist visitors in understanding this and to encourage them to visit all three properties.

Recorded visitors for 2004/2005: 698

Old Farm Strawberry Hill

A structural engineer was engaged to investigate the probable causes and solutions to major cracks that have been appearing and worsening in the two storey section of the house. It has been found that the building requires underpinning to prevent this becoming worse. Close to \$300,000 and temporary closure of the house will be required for the work to be done. A conservation grant will be sought for the project.

A great deal of work has been done by the Warden, Denys Freer to reduce gardening costs and water consumption at the property. He will continue to work on the removal of plantings adjacent to the heritage building that are contributing to its structural problems.

Through her niece, Sue Crofts, Mrs Roma Potts of Northam contacted the Trust generously offering a teapot that had belonged to Sir Richard Spencer. Consequently arrangements were made to meet with Mrs Potts at the Old Farm in April so that the donation could be formally made. Mrs Potts inherited the teapot from her mother Cecelia Nicholson Spencer who was Sir Richard's



great granddaughter. Naturally it has always been a highly valued item and has always held pride of place in a china cabinet for all to see. Due to her desire for the teapot to be housed in a place where as many people as possible could see it and understand its significance, Mrs Potts, after discussion within her family decided that it should return to the Old Farm.

The teapot is on display at the property and further research is being undertaken into the stories behind it. It is expected that once more information comes to light that the significance of the teapot will be further highlighted. The Trust is most grateful to Mrs Potts for making this highly significant donation and for her generosity in sharing it with the people of Western Australia both today and in the future.

Recorded visitors for 2004/2005: 4,704

Old Observatory

Apprentice painters with the Master Painters Association have undertaken paint scrapes, preparation and painting of the Medcalf Room and adjacent hallways in the Old Observatory. Their work has transformed these spaces, previously painted in a continuous yellow-cream back into the richer colour palette devised by George Temple Poole.

Concurrent with the painting in the Observatory has been the replacement of some of the chandeliers (provenanced to the Palace Hotel) with brighter, clearer more contemporary light fittings. This has been done according to the recommendations of the conservation plan for the building and in order to increase light levels in what can be fairly dingy spaces. It has been a major improvement and has made the bottom of the staircase far more visible and safer as a result.

The library has also been reinstated in a new purpose built shelving unit in the Medcalf Room. A working group of staff have undertaken a preliminary sort through the holdings and it is expected that a collecting policy will be developed in order to guide the future growth and development of this specialist library. Following the guidelines of the Trust's Deaccessioning Policy, books that do not fit the collecting policy will firstly be offered to other libraries such as those at the RWAHS and the WA Genealogical Society.

A universal access car bay and ramp was built in the north east corner of the car park with the assistance of Work for the Dole and the City of Perth. In readiness for winter repairs were made to the roof tiles in the section above the reception area.

Recorded visitors for 2004/2005 – 415 (booked tours)



Old Perth Boys School

In May a grant was awarded to the Trust by Lotterywest to cover the development of interpretation plans for the Old Perth Boys School, along with the Artillery Drill Hall, East Perth Cemeteries, and Tranby. Part of the project includes the development of a statement of interpretation philosophy that can be applied to other properties in the future. The draft interpretation plan was received for Old Perth Boys School and discussions have been held with the lessees regarding signage and how it fits with the plan.

Leased as a café – visitation figures unavailable

Tranby

In a year of solid planning the conservation plan was revised by Heritage and Conservation Professionals with the aid of a Lotterywest grant. It was unusual in that one team member, Philip Palmer, was also in the group preparing the interpretation plan. This resulted in the two plans matching extremely well with each other and removing unnecessary duplication of effort or incompatibility.

In May a grant was awarded to the Trust by Lotterywest to cover the development of interpretation plans for the Old Perth Boys School, along with the Artillery Drill Hall, East Perth Cemeteries, and Tranby. Part of the project includes the development of a statement of interpretation philosophy that can be applied to other properties in the future. The draft interpretation plan was received for Tranby and a great deal of consultation was carried out with the volunteers and a challenging long-term vision for the place has been agreed.

A post graduate student from Curtin University, Eddie Marcus, has commenced a research project at Tranby. He is searching for evidence of how the house was previously furnished and is investigating comparative sources of information.

The house was closed for ten days in late June due to a coincidental, complete break down of the electrical supply, security system and telephone connection. All three systems required major work.

Recorded visitors for 2004/2005: 6,346

Wonnerup House

Long serving wardens Maureen and John Bootsman resigned during the year and have retired to Busselton. The property continues to be a major attraction to visitors in the south west.

Recorded visitors for 2004/2005: 3,384



Woodbridge

In time for school visits surrounding Anzac Day, the property volunteers and the Trust's education officer Joy Lefroy, prepared a low budget temporary exhibition about the involvement of the Harper boys in the War. The display provided to be an overwhelming success with the schools and grant submissions will be prepared in an effort to have it professionally designed and manufactured. It will then be used annually.

The cottage, built in the late 1970s to house residential wardens, is into its second year as accommodation for visiting colleagues and consultants. The two bedroom cottage seems to be almost permanently occupied and has provided to be very popular, particularly among its more regular users. The cottage also serves to strengthen many grant-funded projects as it helps ensure that funds are put towards the activities themselves rather than hotels.

Auditors from the Office of the Auditor General visited the property to test the validity of the collection valuation and accession records.

The tearooms, housed in the coach house building, continues to thrive, attracting thousands of customers each year. Its popularity puts pressure on the limited parking but this is unavoidable. There was a major set back in November when a faulty refrigerator caused a fire in the building one night after hours. Fortunately the fire ran out of oxygen and put itself out but not before damaging many of the appliances and filling the building with smoke. The fire resulted in the business being closed for six weeks while repairs and cleaning were carried out.

Recorded visitation for 2004/2005: 3,647

York Courthouse Complex

Two grants were received during the year. The Law Society grant of \$5,000 is to be directed towards the interpretation of the history of law and law enforcement in the Avon Valley region from settlement to the present day and the role of the York Courthouse Complex in its development. The grant from Lotterywest is currently being devoted to the development of interpretative programs for children and the development of a family interaction area that provides a space in which educational benefits are offered on a more informal basis while promoting active participation between children and their families.

Tenders were called for consultants to undertake stage two of the implementation of the interpretation plan. The project will commence early in the new financial year.



A conservation grant of \$70,270 was awarded by Lotterywest grant to permit re-shingling of the roofs to the troopers cottage and the stables.

The stableyard was again to scene for outdoor movies in January and February. This time the films were projected by the York Film Society and, as with last year, the ticketing was undertaken by the York Youth Advisory Council under the auspices of the Shire.

Following an inspection of the Lowe Street cottages a series of emergency works were arranged that then put them in sufficiently good condition that they could be re-leased. The laneway fencing was again repaired and where necessary replaced as a consequence of ongoing vandalism.

The resignations of Margaret Morris and Linda Cleaver after two years as wardens at the property were received with regret and new wardens were recruited to take their place.

Recorded visitation for 2004/2005: 3,121



PROGRAM AREA: THE GOLDEN PIPELINE

Key Objectives

To conserve and interpret the heritage of the Goldfields Water Supply Scheme.

To enhance social and economic opportunity in the Wheatbelt and Goldfields.

Key Strategies

- To take an integrated approach to the development, building and operation of the Project with interlinked conservation, interpretation, education, visitor services, marketing and business programs.
- To conserve Golden Pipeline sites vested in the National Trust and assist with other sites associated with the Golden Pipeline.
- To integrate interpretation with the heritage value of the sites.
- To develop, present and disseminate educational programs and resource material for school age groups
- To develop and present life long learning opportunities for the general public
- To foster local government and community 'ownership' of the Golden Pipeline Project.
- To develop a strategy for marketing and promotion of the project.

GOVERNANCE & MANAGEMENT

Heads of Local Government

The Golden Pipeline Council had become dormant and has recently been dissolved. Terms of Reference for a newly constituted Golden Pipeline Council are currently being drafted which will reflect the changing needs of the project.

The Golden Pipeline Heads of Local Government continue to guide the development of the promotional activities for the Pipeline.

NATIONAL TRUST OF AUSTRALIA (WA)

PROGRAM REPORT – GOLDEN PIPELINE
FOR THE YEAR ENDED 30 JUNE 2005



Interpretation Advisory Group

The Interpretation Advisory Group provides expert advice on the development of all interpretation works for the Golden Pipeline. It makes recommendations and advises the Manager on policies and priorities for interpretation programs, management and administration of interpretation, community involvement and provides encouragement and support for the project. It brings together a number of people with skills and knowledge appropriate to the project to supplement the skills and knowledge of the project staff.

Interpretation Advisory Group

Anne Brake (Chair)	Manager, Golden Pipeline
Ken Kelsall	former Director of Engineering, Water Corporation
Dr Nonja Peters	Curtin University
Pat Barblett	Tourism Industry
Lyn Williamson	Museum of Childhood, ECU
Sarah Murphy	Curator, National Trust
Diana Frylinck	Interpretation Officer, Golden Pipeline
Kelly Rippingale	Conservation Architect, National Trust
Joy Lefroy	Education Coordinator, National Trust
Prof Ross Dowling	School of Marketing, Tourism & Leisure, ECU, National Trust Councilor

Conservation Advisory Group

The Conservation Advisory Group has similar terms of reference to those of the Interpretation Advisory Group, but with regard to conservation, rather than interpretation.

Conservation Advisory Group

Kelly Rippingale (Chair)	Conservation Architect, National Trust
Stephen Carrick	Heritage Council of WA
Mike Corboy	Retired Chief Electrical Engineer, Water Corporation
Richard Garcia	Conservator, Maritime Museum
Jim Paton	Heritage Engineer (structural)
Tony Moulds	Retired Civil Engineer Water Corporation (Heritage Panel, IEA)
Associate Professor John Stephens	Associate Professor, Department of Architecture and Interior Architecture, Curtin University
Anne Brake	Manager, Golden Pipeline

NATIONAL TRUST OF AUSTRALIA (WA)

PROGRAM REPORT – GOLDEN PIPELINE
FOR THE YEAR ENDED 30 JUNE 2005



Mechanical and Electrical Advisory Group

The Mechanical and Electrical Advisory Group focus on conservation of extant machinery and equipment as well as any other engineering elements of the Goldfields Water Supply Scheme.

This year's focus has included the project to return jackets and cowlings to the pumps at No 8 Pump Station, in conjunction with Stephen Smith and Murray Wilmott and preparation of a brief for housing remnant parts of 'S' engine currently stored in the Shire of Merredin Works Depot.

The group is chaired by Mike Corboy who reports progress to the Conservation Advisory Group.

Golden Pipeline Team

Anne Brake	Manager Golden Pipeline
Kelly Rippingale	Conservation Architect Trust / Golden Pipeline
Joy Lefroy	Education Coordinator – Trust, including Golden Pipeline
Diana Frylinck	Interpretation Officer / Education Officer
Haley Chandler	Administration Assistant
Catherine Czrew	Site Coordinator, No 1 Pump Station, 3 days per week, Nov 04 – May 05

ACHIEVEMENTS IN 2004/2005

GOLDEN PIPELINE SITES

Mundaring Weir Precinct

Mundaring Weir Precinct Master Plan – The Trust is working through the final objectives of the Mundaring Weir Master Plan with the Department of Planning and Infrastructure. This will allow for more efficient program development in the precinct in the future.

Mundaring Weir Precinct – General

Work within the Mundaring Weir Precinct has included

- crest gate viewing platform installed as part of the Weir Walk
- new precinct signage designed, fabricated and installed – this includes large precinct signs and smaller directional signs
- assistance to Jens Jorgensen for HCWA heritage grants program application for a conservation plan for the hotel. Application successful and conservation plan completed
- Ongoing management of four houses located opposite the Mundaring Weir Hotel

NATIONAL TRUST OF AUSTRALIA (WA)

PROGRAM REPORT – GOLDEN PIPELINE
FOR THE YEAR ENDED 30 JUNE 2005



No 1 Pump Station

Interpretation (including education)

Stage 2 of interpretation works at No 1 Pump Station opened on 20 November 2004 by the then Minister for Heritage Ljiljana Ravlich MLC. Approximately 100 people attended the celebration.

From the opening, No 1 Pump Station has been open to the public 5 days per week – Wednesday to Sunday. Catherine Czerw was employed on a part time basis for a period of 6 months as Site Co-ordinator. The main tasks for this position were to establish procedures and systems for No 1 Pump Station which linked into systems already in place at West Perth and other Trust properties and allowed for the eventual take over of the duties by volunteers.

Two intakes of volunteers have been held for No 1 Pump Station. The volunteers were given a comprehensive training course covering information on the National Trust, on conservation and interpretation practices including the Burra Charter, the history of the Goldfields Water Supply Scheme, specific conservation and interpretation issues relating to No 1 Pump Station and the Golden Pipeline, content of the interpretation at No 1 Pump Station and administrative procedures. A further series of training sessions has been held relating specifically to current water management issues.

Currently 16 volunteers undertake a range of duties at No 1 including visitor reception and assisting with school and other group bookings.

No 1 Pump Station was closed for the month of February. This will be an annual occurrence and allows for any major works including cleaning and gives volunteers a break from their schedules. The closure is in response to a known significant decrease in numbers at that time due to the heat and follows the lead of many other tourist destinations in the district.

Initiatives to encourage visitors in the Precinct to visit No 1 Pump Station include the installation of new precinct and directional signage (see above) and the printing of a promotional brochure for No 1 Pump Station.

The schools education program continues to develop. A collaboration with the Water Corporation has allowed for the extension of their Waterwise Schools project to include an education program at No 1 Pump Station. Over 250 children have participated in this program between March and June 2005.

Twenty four children attended a pilot school holiday program in April. Titled *Surveying the Pipeline*, children constructed theodolites. A hands-on activity has been developed for children visiting No 1 Pump Station outside of school programs.

Total visitor numbers for No 1 – 7310.

NATIONAL TRUST OF AUSTRALIA (WA)

PROGRAM REPORT – GOLDEN PIPELINE
FOR THE YEAR ENDED 30 JUNE 2005



This includes fifty-two groups participating in workshops and related activities at No 1. One thousand three hundred and forty-seven children attended curriculum based programs with eight hundred and sixty six adults and children engaged in public education programs making a total of two thousand two hundred and thirteen.

Conservation

Three hundred native seedlings planted by a volunteer group comprising of Trust staff and family members in July 2004 around No 1 Pump Station and Learning Centre have largely survived the summer and are growing well. A *xanthorrea* (grass tree) has also been planted.

General maintenance work has been undertaken in and around No 1 Pump Station and the Learning Centre.

An investigation of conservation procedures for A Engine has been undertaken and a draft proposal has been prepared.

No 3 Pump Station – Cunderdin (joint vesting with Shire of Cunderdin)

A staged Museum Redevelopment Plan has been completed. This complements the Master Plan for the Precinct and focuses more specifically on interpretation. A successful funding application from the Shire of Cunderdin to Lotterywest has allowed for the implementation of the first stage of these works. Due to the integrated nature of the 2 projects, this will be done in conjunction with the Visitor Centre works.

Kelsall Binet Architects, in conjunction with Insight Communication, have been commissioned to project manage the construction of a Visitor Centre in the Boiler House of No 3. Tenders for the work have exceeded the budget allocation and appropriate grant assistance is being investigated.

Tammin

Kadijiny Kep was opened on 10 April 2005. This is one of the 25 Golden Pipeline sites and incorporates the hydrology model which was initially funded as part of a joint application to the Department of Transport and Regional Services' Regional Assistance Program under the Golden Pipeline banner in 2000. As well as the hydrology model the site includes a significant water feature with murals painted by local children and Aboriginal groups, and an amphitheatre and stage making it an important facility for the small community.

No 4 Pump Station – Merredin

Urgent conservation works including drainage and stabilization of the building have been carried out. Funding has included \$25 000.00 from Lotterywest and \$25 000.00 in kind from the Shire of Merredin.

NATIONAL TRUST OF AUSTRALIA (WA)

PROGRAM REPORT – GOLDEN PIPELINE
FOR THE YEAR ENDED 30 JUNE 2005



Accumulated sludge in the basement of the pump station defied mechanical means of removal and was eventually dug out by hand in a contract with Conservation Volunteers Australia.

Karalee Rocks

A draft management plan has been prepared for the Karalee Rocks and presented to Yilgarn Council.

Risk signage has been prepared for the site and will be installed in July 2005.

No 8 Pump Station – Dedari

A satellite telephone has been installed at the warden's house and at the pump station. This allows for direct communication with the warden and fax communication.

A site visit with Stephen Smith and Murray Wilmott was undertaken regarding the conservation of the engines (see Mechanical and Electrical Advisory Group). Stephen and Murray have volunteered to undertake the reinstatement of jackets and cowlings that were removed from the engines as part of the asbestos removal program several years ago.

Jack Carins' Camp (not a NTWA property)

The Trust's conservation architect in conjunction with Tony Graneri and the Shire of Yilgarn's works manager undertook urgent conservation works to repair the collapsed verandah at this Golden Pipeline Heritage Trail site.

The site has been classified by the National Trust.

Mangowine Homestead

There continues to be a flow of visitors to this remote Trust property. Its well-publicised annual concert is a major event in the area and serves to raise the profile of Mangowine in the broader community.

Under a lease arrangement the Shire of Nungarin has day-to-day responsibility for Mangowine with the Trust's professional input in all conservation and related issues. Trust staff prepared a successful grant application on behalf of the Shire to be used to commission an interpretation plan for the property. Work began on the project in the latter half of the year.

The shire was also successful with a Lotterywest conservation grant, once again prepared by the Trust to undertake conservation work including an archaeological dig which will be held as a public program.

Recorded visitors for 2004/2005: no figures provided by Shire

Warden Finnerty's Residence

NATIONAL TRUST OF AUSTRALIA (WA)

PROGRAM REPORT – GOLDEN PIPELINE
FOR THE YEAR ENDED 30 JUNE 2005



Continues to be leased to and managed on a day-to-day basis by the Shire of Coolgardie.

Extensive eradication of live termite activity was required throughout the year which now appears to be under control. Structural work was required to the kitchen roof as a result of this activity.

The Trust has prepared a grant application on behalf of the Shire for the preparation of an interpretation plan for the place. This will build on the interpretation plan that the Shire is currently having done for the town site.

Recorded visitors for 2004/2005: no figures provided by Shire

GOLDEN PIPELINE - GENERAL

Kep Track

Negotiations to finalise tender prices for works to complete the construction of the Kep Track from Wooroloo to Trimmer Rd have been undertaken for work to commence in July 2005. The finalisation of this work has been delayed by the MRD which is planning extensive road works around Clackline and which take in a section of the proposed trail route requiring significant renegotiations with stakeholders and landowners.

Education

Golden Pipeline education staff participated in Scitech's Science Awareness Festival held in Kalgoorlie at the Goldfields Senior High School in September 2004.

Professional Development seminars were held for primary and secondary teachers in conjunction with the WA Museum and Alternative Independent Schools of WA. 56 teachers attended.

Participation in the Water Corporation's annual Groundwater Festival held at Whiteman Park in November 2004.

The Golden Pipeline hosted four authors over a period of four weeks in the Learning Centre at No 1 Pump Station for *heARTlines*, a literature festival for schools. One of the four days was specifically dedicated to the picture book *The Pipeline CY O'Connor Built* by Joy Lefroy, Diana Frylinck and Marion Duke. Approximately 350 students attended sessions at the Learning Centre over the four weeks. An afternoon session for adults and members of The National Trust of Australia (WA) was held.

The inaugural CY O'Connor Annual Address was given by Dr Jim Gill, Chief Executive Officer, Water Corporation on 10 March the anniversary of O'Connor's death. Around 25 attended including members of the O'Connor family.

NATIONAL TRUST OF AUSTRALIA (WA)

PROGRAM REPORT – GOLDEN PIPELINE
FOR THE YEAR ENDED 30 JUNE 2005



The WA Museum's Golden Pipeline Loan box was loaned to them seven times over the past year.

Research

Sam Bolton continues her work on her thesis 'The Goldfields Water Supply Scheme: An archaeological study of regional development and society'. Over the last 12 months Sam has confirmed her research proposal and undertaken fieldwork programs (30 October – 28 November 2004, 4 – 19 June 2005). She has also presented papers at the 2004 Australasian Society for Historical

Archaeology/Australian Institute for Maritime Archaeology Conference Wellington, NZ and as part of a UWA Occasional Seminar series.

Promotion

Golden Pipeline has a number of existing brochures still being circulated to Visitor Centres and local community business along the pipeline. A number of new brochures have been developed for the purpose of increasing visitation, both at Golden Pipeline sites and also along the heritage drive trail.

Existing Brochures:

Golden Pipeline Touring Kit
Weir Walk and O'Connor Trail
Kep Track Brochure (received grant for new brochure)
Golden Pipeline Information Sheets (x6)

New Brochures:

Golden Pipeline Promotional brochure
No 1 Pump Station Site brochure
No 1 Pump Station Promotional brochure

Coupled with the promotional material, we have also placed a number of advertisements encouraging travel along the Pipeline and visitation at GP sites in publications that are directly relevant to our target audience. There have also been a number of advertisements promoting educational programs run at No 1 Pump Station for groups; these have been placed in education magazines directly targeting teachers to educate the next generation.

Advertising:

Caravan and Camping Magazine
RM Williams Outback Magazine
WA Education Magazine
Discover the Perth Hills
Autumn Camping in Australia's Golden Outback
Kalgoorlie Goldfields Holiday Planner
Transwa through Countrywide Publications

NATIONAL TRUST OF AUSTRALIA (WA)

PROGRAM REPORT – GOLDEN PIPELINE
FOR THE YEAR ENDED 30 JUNE 2005



Throughout this year we have placed a number of stories in a wide variety of papers, magazines and other such publications. These range from locally owned and run papers like the Merredin Mercury to more well known and resourced papers like *The West Australian*. We have also had stories placed in tourism industry publications such as the Golden Outback Self Drive Guide, which details other self drive trails, and the WA Caravan and Camping magazine. Stories have also appeared in a variety of museum, heritage and education related publications and in local and water specific publications such as Mundaring and Hills Historical Society's newsletter and the Water Corporation's internal magazine 'Flowing Forward'. The Golden Pipeline has been well represented in Trust News. There have been approximately 50 articles this year helping to promote the Golden Pipeline.

Golden Pipeline participated in the Western Australian 2005 Caravan and Camping Show held at Ascot Racecourse and our brochures were distributed at the Adelaide and Brisbane Caravan and Camping Shows by staff from the Golden Quest Discovery Trail.

Web site – significant additional material has been added to the matrix on the Golden Pipeline web site. This work includes contributions from staff from the Natural Heritage section of the Trust.

Talks and presentations – GP staff have given talks and presentations to a wide cross section of groups ranging from community groups to schools and universities.

Grants and Specific Purpose Funding

The Trust is only able to undertake work on the Golden Pipeline because of the substantial support it has received from various organisations, which have provided the funds, or in-kind support. The details of this support the project received this year are shown below:

Funding Body	Purpose	Amount
Lotterywest	Kep Track – Trail Upgrade	\$50 000
Lotterywest	No 8 Pump Station - Dedari	\$69 435
Lotterywest	Merredin No 4 Pump Station	\$16 188
Lotterywest	Interpretative Signage for Kep Track	\$ 7 680
Lotterywest	Cultural Heritage Interpretation Grant – Interpretation Plan for Mangowine Homestead (contribution to grant by Shire of Nungarin)	

NATIONAL TRUST OF AUSTRALIA (WA)

PROGRAM REPORT – GOLDEN PIPELINE
FOR THE YEAR ENDED 30 JUNE 2005



Lotterywest	Cultural Heritage Interpretation Grant – Stage 1 interpretation works for No 3 Pump Station, Cunderdin Museum. (contribution to grant by Shire of Cunderdin)	\$18 500
-------------	--	----------

Contract Management

All contractors are engaged in accordance with State Supply Commission guidelines.

Kelsall Binet Architects	Design, documentation & construction, new visitor information facility, No 3 Pump Station, Cunderdin No 4 pump Station admin and conservation works
Richard Rathbone	Project management, Kep Track (Northam to West Northam Tanks)
Clinton Long Project Management	building works – staff facilities, No 1 Pump Station
Glowe Communications	WARRMAS project / tourism kit
Transplan	Project management and construction, Kep Track (Mt Helena to Wooroloo)
Mulloy Studios with Paul Kloeden and Exhibition	Stage 2 Interpretation works – No 1 Services Pump Station



The Golden Pipeline team would like to acknowledge the work of our volunteers

- Arthur Coopes – Battye Library pictures project
- Wendy Folvig – general office duties
- Peter Manson – general office duties
- Gerard van Didden – No 1 Pump Station
- Keith Jarvis – No 1 Pump Station
- Bill Cutler – No 1 Pump Station
- Phil Rennie – No 1 Pump Station
- Kim Derriman – No 1 Pump Station
- Rob Rippingale – No 1 Pump Station
- Terry Crawford – No 1 Pump Station
- Joan Crawford – No 1 Pump Station
- Pamela Dell – No 1 Pump Station
- Trevor Garrity – No 1 Pump Station
- Don Young – No 1 Pump Station
- Frank Mansfield – No 1 Pump Station
- Helen Foskett – No 1 Pump Station
- Alethea du Boulay – No 1 Pump Station
- Catherine Kendall – No 1 Pump Station
- Norma Lambert – No 1 Pump Station

Staff and other volunteers also volunteered their time for the Perth Caravan and Camping Show.



LUISINI WINERY PROJECT

Key Objectives

The objectives of this unique project are:

- To develop a sustainable, integrated and multifaceted cultural heritage, environmental, educational and recreational facility;
- To build on opportunities offered by the place by illustrating the historical and natural significance embodied in the former Winery building and the natural wetlands system;
- To honour and celebrate the contribution of the Italian community to Western Australia;
- To stimulate economic and social development for both the region and the State of Western Australia;
- To develop a sustained visitation by offering a range of visitor experiences based on the interpretation and significance of the place and to also provide supporting amenities.

The proposed redevelopment has three major components:

- The conservation and interpretation of the existing Winery building;
- The construction of a Wine Education and Appreciation Centre;
- Conservation of the natural wetlands and a appropriate landscape works to the immediate environs in keeping with the requirements of the Yellagonga Regional Management Plan and as reflected in the thematic and interpretative policies and strategies from the 'Interpretation Plan'.

Key Strategies

The addition of an Environmental/Educational Centre and the development of the wetlands area associated with Lake Goollelal has been significant. The requirements of the built, natural and cultural environments are all integral and interlinked. The Scope of Works covering about 7.7 hectares includes:

- Conservation and adaptation of the existing Winery building;
- An Environmental/Education Centre;
- A Wine Education Centre;
- A Café/Restaurant (Themed);
- Landscape works to the immediate environs in keeping with the environmental requirements of the *Yellagonga Regional Park Management Plan* and as reflected in the thematic and interpretive policies and strategies from the commissioned 'Interpretation Plan';
- Design principles which reflect the National Trust's desire to demonstrate its commitment to environmental sensitivities and environmental sustainability through the incorporation of sustainable design practice and principles;
- Interpretation of the Winery building to include a museum to be created inside the tanks;
- Interpretation of the natural wetlands area; and
- Interpretation of all new facilities associated with the place.



Overview

The Luisini Winery is situated on Lakeway Drive in Kingsley. The origins of the Winery and its role in the development of the Wanneroo area are very important, including the link to the life of the Italian community in that area and in general, especially between the 1920s and the 1980s. At one stage, the Luisini Winery was the largest privately owned winery in the southern hemisphere. Wine sales continued until 1988 and in 1989, the Winery building was purchased by the State Government at the request of the City of Wanneroo. The Western Australian Planning Commission has now entrusted the National Trust of Australia (WA) to conserve and interpret this important heritage place.

Update

The Luisini Winery Project is an holistic project which recognises the unique opportunity to offer an excellent balance of both the built, natural and cultural heritage and environments, which aim to assist in the development of a continuous tourism experience throughout Australia. The holistic approach has also enabled greater flexibility and diversity in the planning and development of the place to ensure the desired sustainability and repeat visitation that will also contribute to long term economic growth.

It is also significant that the Luisini Winery is situated about twenty kilometres north of Perth in the suburb of Kingsley in the City of Joondalup and adjacent to the City of Wanneroo, two of the most progressive and rapidly expanding cities at local government level. The Luisini Winery would be about halfway between the Swan Valley and the coast, but it overlooks a significant wetlands area surrounding Lake Goollelal which is contained within the Yellagonga Regional Park. The addition of the development of the wetlands area and an Environmental/Education will be an integral component of the project to attract continuous and sustained tourism.

Key Stakeholders

The National Trust of Australia (WA) has involved many key stakeholders in the development and planning of this project. First and foremost was the important partnership with the Italian community through the Italo-Australian Welfare and Cultural Centre (Inc) which acts as an umbrella body for the Italian community and which was established in 1956. Due to the holistic approach to planning and development, other key stakeholders include:

- Western Australian Planning Commission;
- Department of Planning and Infrastructure;
- City of Joondalup;
- City of Wanneroo;
- Department of Conservation and Land Management;
- Yellagonga Regional Park Community Advisory Committee;
- Yellagonga Catchment Group;
- Friends of Yellagonga;
- Community; and
- Wine Industry Association of Western Australia.



Plans / Reports

The following plans/reports have been completed for the Luisini Winery Project:

- Conservation Plan (Palassis Architects, 1996);
- Redevelopment Study and Recommendations Document (Business Plan) (Asset Research, 2001);
- Interpretation Plan (Mulloway Studio and Paul Kloeden, 2002);
- Access Proposals (Morgan Urban Planning Services/Uloth & Associates, 2001, updated, 2003);
- Environmental Management Plan (Ecoscape, 2003);
- Stage 1 & Stage II Environmental Site Assessment (MPL Health, Safety & Environmental Services, 2003);
- Landscaping and Design Plans and model.

Current Status

The formal ‘Development Application’ was submitted to the City of Joondalup in 2003 and a response was finally received from the WA Planning Commission in January 2005 indicating that the only approval given for the project was limited solely to the conservation and restoration of the existing Winery building. A further application for approval to commence development under the Metropolitan Region Scheme will be required for the development of the balance of the project.

This decision was very disappointing in light of the announcement in December 2004 by the Premier at a major Italian community function that the WA Planning Commission had approved an additional \$1.5 million in funding “to enable the restoration of the Luisini Winery and for it to operate effectively and viably into the future”.

Members of the Luisini Winery Advisory Committee, including the Italian community representatives, had an opportunity to meet with the Chairman of the WA Planning Commission in March 2005 to discuss issues of concern.

The conservation works, considered as stage one of the total development, have commenced. This includes the all important re-roofing of the Winery.

Preparations are also in place to submit a new development application as part of the formal and technical process for the remainder of the project. This includes the proposed environmental/community/education centre and the café/restaurant.



NATURAL HERITAGE

Our Vision

Natural heritage is protected, valued and enjoyed.

Our Mission

To secure the greater conservation and sustainable management of significant natural heritage by supporting and working with others for current and future generations of our community.

Our Objectives

- To increase by 10 percent per year the area of natural heritage under conservation on privately owned land using Trust covenants
- To increase by 10 percent per year the number of management plans for natural heritage places
- To purchase and revolve with covenants three conservation properties per year
- To raise awareness and appreciation of natural heritage within the community and across government
- To cultivate and maintain partnerships which will help to achieve the mission

Services

The National Trust's Natural Heritage Program provides services to the community to:

- Covenant land worthy of conservation.
- Support owners of covenanted land.
- Facilitate the purchase, protection and sale with covenant of conservation land through the *BushBank* revolving fund.
- Facilitate donations, including land, to support the Trust's natural heritage programs.
- Organise tax-deductible fund-raising appeals to acquire conservation land and provide funds for conservation management.
- Advocate for the increased conservation of natural heritage places.

The National Trust is proud of its commitment to the conservation of natural values on private property.



CONSERVATION COVENANTS

The Conservation Covenant program is a program of the National Trust of Australia (WA).

Structure

Until October 2003, the Covenanting Advisory Committee (CAC) reviewed and commented on the suitability of prospective covenants; this committee has now been dissolved. Decisions to accept covenants into the covenant program are now made by the Manager, Natural Heritage on advice from the Covenant Coordinator and endorsement from the BushBank Board. Covenants are signed by the President and Secretary of the Council

Achievements in 2004/2005:

- 11 covenant enquiries were received.
- 2 covenants were declined following inspection, and 2 were declined as they did not meet the acceptance criteria.
- 4 new invitations to covenant were received.
- 11 covenants over 10 properties have been signed during the year covering 1810 hectares.
- Management Plans have been developed for all covenanted properties. Some of these are still being finalised and are in the draft stage.
- 9 stewardship visits were made and contact was made with 7 landowners for the purposes of stewardship.
- To date, the covenant program has registered 92 covenants over 7850 hectares.

Other achievements

The covenant program provided considerable support to its landowners through the Stewardship Program, assisting 11 of them with applications for funding such as Envirofunds and Bushland Benefits. One landowner was successful in obtaining Envirofunds, decisions on Bushland Benefits funding will be made later this year.

The nature conservation covenant programs of the National Trust and CALM have received a boost with the likely funding of a joint project by the South West Catchments Council (SWCC). The project, which is a joint initiative exemplifying the cooperative nature of the two programs, will begin in July 2005 if the final approvals for funding are made. It will target properties in the South West region which have 'highest priority' flora or Threatened Ecological Communities (TECs) as identified by the project. 'Highest priority' flora are those identified by SWCC, and are generally Declared Rare Flora (DRF) specific to the South West region.

Linkages between the CALM and National Trust covenant programs were also furthered this year, when CALM's Covenant Coordinator, Sophie Moller joined the National Trust program for 8 months. Ms Moller, who was on maternity leave from CALM, was seconded to the Trust program from October 2004 until June 2005. Her experience in covenants has been beneficial to the Trust, and the relationship between the two organisations strengthened because of the exchange.



Properties of particular interest include:

- A spectacular property of 1089 hectares in the Shire of Jerramungup has been purchased by Bushbank and the process to covenant it will shortly be completed by the Trust. The land has high aesthetic appeal with steep aesthetic cliffs and distant views to the Stirling Ranges. The property forms a vital connection between the bushland along Corackerup Creek to the east and Corackerup reserve to the west and has the most significant spongolite cliff formations known from the area. Securing conservation of the bushland and replanting of extensive parts of the cleared land is a vital step in development of Gondwana Link. Malleefowl are present and Tammar Wallaby are known from just south of the location and almost certainly occur on this property. The bushland is very likely to contain significant populations of the uncommon Corackerup endemic eucalypts *Eucalyptus melanophitra* and *E. vesciculosa*. The Declared Rare *Myoporum cordifolium* is also likely to occur on breakaway colluviums on the block.
- A covenant has also been negotiated for the 1170 hectares of bushland purchased by Bushbank in the Shire of Westonia. The property has numerous granite outcrops that add to the unique character and diversity of the bushland. It has a very high species diversity of both flora and fauna. No Declared Rare Flora has been noted however, *Eucalyptus crucis* subsp. *crucis* (Southern Cross Mallee) is found in bushland to the north of the property.
- A covenant has been negotiated for 33 hectares of Jarrah, marri and wandoo forest in the Shire of Serpentine-Jarrahdale. The property is a good example of the vegetation in the area; it is generally in good condition and has strong links and connections with surrounding bushland. It also contains species more generally associated with the wheatbelt than the Darling Range. It provides habitat for a number of threatened and priority faunal and floral species that may occur on the property, and is an excellent example of a covenantor who voluntarily wishes to protect bushland on their property to receive advice and assistance with management.
- The first property to be covenanted with the National Trust recently changed hands. The covenant was registered in March 1971 and it covers 396 hectares in the Shire of Narembeen. Comparison of aerial photos from 1972 and the present day shows that, not only has the native vegetation remained intact, but that it has actually regenerated in places.



BUSHBANK

BushBank is a state-based program, developed by a consortium of the National Trust of Australia (WA), the Department of Conservation and Land Management (CALM) and WWF Australia. The program is administered by the National Trust of Australia (WA).

BushBank is funded by Federal and State Government and is supported by the consortium partners with in-kind support and resources.

Structure

The Council of the National Trust of Australia (WA) has formally delegated authority (within set limits) to the BushBank Board.

BushBank Board

Mr Nicholas Wells (Independent Chair)
Dr Ken Atkins (Chair, BushBank TAC)
Mr Jarrod Rendell
Mr David Free
Mrs Pat Barblett OAM
Mr Adam Levin
Mr Vincent Graneri

The Board comprises members nominated by consortium partners; the Chief Executive Officer of the National Trust (ex officio); the Chairman of the Technical Advisory Committee (ex officio); and additional members coopted for their special expertise. The BushBank Manager attends Board meetings. The Board provides strategic guidance, approves and oversees the implementation of annual plans and budgets and provides financial, conservation, communications and legal support for the operations of BushBank.

Key Board Responsibilities:

- Approve property purchases
- Approve and periodically review the Strategic Plan
- Approve annual plans and budgets.
- Monitor progress against agreed plans and budgets.
- Ensure compliance with the contract with Environment Australia and the Memorandum of Understanding between consortium partners.
- Assist the NTWA CEO, Manager and staff in raising funds for operational, special projects and capital needs.

Technical Advisory Committee

Dr Ken Atkins (Chair) – Department of Conservation & Land Management
Mr Malcolm French – Rural realtor, REIWA member
Mr Alan Bell – Valuer, API member
Mr Ted Griffin – Department of Agriculture
Mr Chris Curnow – WWF Australia
Mr Mark Ochtman – Greening Australia (WA)



The TAC comprises members nominated by consortium partners and additional members coopted for their expertise in the areas of ecology, real estate and valuation. The BushBank Manager attends TAC meetings. The BushBank TAC provides expert advice and direction to the Board, for the selection of properties, to maximise the conservation outcomes of the fund in accordance with the Agreement between the Commonwealth of Australia and the Trust.

Key TAC Responsibilities:

- Provide advice for purchases
- Provide advice on protection and management mechanisms
- Establish and review the principles and criteria for purchases
- Develop (in conjunction with donors) principles and criteria for additional defined purpose funds under the auspices of BushBank.
- Be accessible outside of regular meetings for provision of advice, expertise and linkages to networks of knowledge for decision making in purchases where required.
- Conservation members to review prospective covenants.

Achievements and Outcomes in 2004/2005

- The Board met 4 times and considered 6 recommendations from the TAC.
- The TAC met 6 times and considered 20 properties.
- 1 property was recommended to CALM for consideration for addition to conservation reserves.
- Sale of Granite Run, Yilgarn with 1024 ha bushland in December 2004.
- Purchase of Yarroweyah Falls Farm (1499ha), Gnowangerup with 680 ha bushland in May 2005.
- Negotiations continued with Bush Brokers to improve the website for bushland properties and to form a partnership with REIWA and WWF for Bush Brokers website future management.
- To date, BushBank has purchased 4 properties, of which 2 have been successfully on-sold, 1 is under offer and 1 is being prepared for sale.

Promotion

- The purchase of Yarroweyah Falls will provide numerous opportunities for publicity, corporate sponsorship and community partnerships.

Raising Awareness

Articles were published in noted publications, including:

- *Intersector*;
- *Bush*; and
- *Trust News*.



Establishing and Maintaining Links

- Communications were maintained with existing partners in conservation such as CALM, WWF, Greening Australia and the Commonwealth Department of Environment and Heritage.
- The Natural Heritage program was represented at the Commonwealth's 2-day Bush, Water and Agriculture/Sustainable Resource Use Forum.
- The Natural Heritage program attended the 10th Anniversary of WWF being in Western Australia.
- A draft Memorandum of Understanding was prepared with Songman – Circle of Wisdom (Dr Richard Walley) which will encourage partnerships and the participation of Indigenous Australians in land management activities on the Trust's lands.
- A Profit a Prendre was entered into with the Forest Products Commission for planting of sandalwood in rehabilitation works on Yarraweyah Falls Farm.



COMMUNITY AND OUTREACH

MEMBERSHIP:

Objective

- To recruit new members to the National Trust and to strengthen existing membership involvement and support.

Key Strategies

- Develop and maintain programs that ensure membership growth that reflects the broad socio-economic, age, and cultural and geographic profile of Western Australians.
- Develop and maintain opportunities for members to become actively involved with heritage issues and the National Trust to the level they choose.
- Create opportunities for the development of a broader membership base by linking programs with relevant people and organisations committed to the mission of the National Trust.
- Ensure the profile of the National Trust is contemporary to Western Australians.
- Develop and maintain an effective communication plan reflecting the Trust's Corporate Plan for all members and stakeholders.

Performance Measures

- The number of new members and volunteers and community diversity of membership and volunteers
- The number of events and activities relevant to the interests of members and volunteers.
- The amount of Trust exposure to the community as per agreed standard
- The percentage of satisfaction of members and volunteers with Trust activities.

Features of the 2004 - 2005 Program

Membership Numbers

Overall memberships for 2004 - 2005 were steady with the previous year for a total of 1728. Based on agreed conversion calculations, this translates into just over 4231 members. Consistently high rates of renewal have offset the plateau of new membership applications which has been attributed to continuing international travel uncertainties.

Web Site

The National Trust of Australia (WA) web pages is available at www.ntwa.com.au. The content has been progressively expanded as budget and volunteer input permitted. This annual report will be available in pdf



format on line. The on-line events page *What's On* presented over 430 heritage and related events from National Trust, partnering and like minded heritage organisations. The on line purchasing of memberships is increasing at a steady rate and to promote on line joining the opportunity to join online and save, by saving the joining fee was promoted.

Trust News

Four publications were produced this year and were circulated in September, December, February and May. The magazine continues to be recognised as the key heritage publication in Western Australia, providing a broad range of articles and features reflecting the Trust's holistic approach to heritage. Articles that featured in these editions include: Dampier Rock Art Precinct, Centenary of Parliament House, Jack Carin's Camp, Education, and Sustaining Heritage

Members' Events

This year the Annual General Meeting held at the National Trust's Artillery Drill Hall, Fremantle, which is leased to the Fly By Night Musicians' Club. This building was constructed in 1895/6 to provide facilities for the town's volunteer artillery corps, No 2 Battle Field Artillery. The Hall is sited on the gardens for the convict depot at the foot of Fremantle Prison. Members were treated to an interpretive performance by Lance Holt School students' which focused on their interpretation of the City of Fremantle - their local built environment in search for a dog called Freebie. The presentation was complimented by a variety of media including video, art and personal expression as well as music written by the year 6 and 7 students that was inspired by the different places students interact with in their environment.

Properties continued to present a wide range of interpretations, commemorations, community events, entertainments and concerts throughout the year. Many of these activities have now become standards within the Trust's activities calendar, attracting a wide range of members, friends and community visitors. Of particular note were the concerts at Mangowine, Christmas Carols at Tranby and Old Blythewood and an Anzac Evening Service at Tranby.

The Member's Christmas Party was held at the Old Observatory in conjunction with the National Trust's Annual Volunteer Awards, and book launch for a *Sense of Place* by Professor George Seddon in December.

Part of the broad educational role of the National Trust is to encourage an awareness, understanding, appreciation and commitment to heritage in the community. The National Trust continued to make specific expertise available to like minded organisations in support of positive heritage outcomes. In partnership with the Fremantle Society and the Fremantle Local History Collection, the heritage and IT teams at the National Trust developed a web site for the Fremantle Society which included on line access to a range of



historic photographs of Fremantle from the Local History Collection. The web site may be found at <http://www.fremantlesociety.org.au>

To encourage a wider distribution of papers from the 175th Conference History Stream and other papers presented by the History Council of Western Australia at its "Proclaiming History" and other lecture series, the National Trust developed a web page for the History Council. This web site may be found at <http://www.historycouncilwa.org.au>. Both web sites support content management thus enhancing their value as cost effective communication tools for these organisations. The mutual linking of National Trust and other web sites supports this shared concept of broad community access to quality heritage and related information, activities and resources.

The National Trust also took an innovative approach to the Book Week theme of "Reading Rocks". By using "rocks" as a noun instead of a verb, a book week resource was developed by the IT/Heritage and Education teams which focussed on the Dampier Rock Art and the headstones at East Perth Cemeteries. Activity sheets and Information Sheets for both topics were available on-line with additional links to further research in the case of the Dampier Rock Art or site bookings for east Perth Cemeteries. The web site initiative was instrumental in linking the National Trust with a high profile national program as well as promoting awareness and discussion of the heritage issues of rock art and historic cemeteries.



VOLUNTEERS:

Objective

- To recruit, orient, train and support volunteers to add value to National Trust programs and projects and to strengthen existing membership involvement and support.

Key Strategies

- Develop and maintain a volunteer program which matches volunteer interests and expectations to program and project needs.
- The effectively exercise duty of care and communication programs with volunteers
- Develop and maintain opportunities for members to become actively involved with heritage issues and the National Trust to the level they choose.
- Offer a wide range of incentives and benefits to members and volunteers actively involved with the National Trust.

Performance Measures

- The number of new volunteers and community diversity of membership and volunteers
- The number of training programs, events and activities relevant to the interests of volunteers.
- The efficiency and effectiveness of the administration of volunteers as measured from both an organizational and volunteer perspective.

Volunteer Awards 2004-05

As an ongoing commitment from the International Year of Volunteers, the Council of the National Trust, on behalf of all members acknowledges the ongoing support of volunteers without which the many programs of the Trust could not effectively operate. Congratulations are extended to those volunteers who were honoured through the presentation of training and service awards.

Presentation To Honorary And Life Members

On the occasion of the 45th Anniversary of the National Trust of Australia (WA), the Council and members remembered in particular the ongoing record of service of its Honorary and Life Members through the presentation of a specially commissioned anniversary pin.

Mrs P Buxton

Mr R Clement

Mrs D Endicott

Dr MA Feilman OBE

Miss E Harler

The Hon I G Medcalf

Mr & Mrs E Caizl

Mrs H J Dayman

Miss M Evans

Mrs E Goodman

Mrs V Hill

Mr F Montgomery



Mr & Mrs J Oldham
Mr J B Roberts ISO MBE OAM ED
Mrs V O Symons

Mr J Pidgeon
Mrs R Stewart OAM
Mr & Mrs C J Tree

The annual National Trust Volunteer Recognition Ceremony was held at the Old Observatory on 4 December 2004. This event recognised the services of all volunteers and honours in particular, volunteers who have reached significant milestones. Awards were presented, in the presence of the Minister for Heritage the Hon. Ljiljana Ravlich MLC, by the Chairman of Council, Professor David Dolan, the President, Associate Professor Jenny Gregory and the Secretary Dr Rosalind Lawe Davies of the National Trust of Australia (WA).

Certificates of Appreciation

For exceptional support of Anzac Evening Services at Tranby House.

Albert Bisbey – Veterans' Entertainment
Keith Forbes - Bugler
Navy Cadets and Staff of Training Ship Challenger .

McLarty Award

For 5 years of volunteer service to the National Trust of Australia (WA)

John James	Carol Sharp	Pat Spirek
Jan Barker	Flora MacDonald	Graeme Gerrans

Forrest Award

For 10 years of volunteer service to the National Trust of Australia (WA)

R Creswell	Ron Facius	Wendy Folvig
Merle Gardiner	Bruce James	Joan McNamara
Daphne Murphy	Denise O'Keefe	Trevor O'Keefe
Judy O'Sullivan	Shirley Suriano	Ruth Williams
Lyll Page	Val Hogan	

Service Award

For 20 years of volunteer service to the National Trust of Australia (WA)

Professor Norman Etherington

Recognition of Service

Retiring National Trust of Australia (WA) Councillors

Pat Barblett AM	Ron Bodycoat AM	Pam Hall
Dr Joanna Sassoon	Richard Wilson	



The National Trust was also pleased to welcome to the team, volunteers who recently completed training programs at Tranby House – Peninsula Farm and No 1 Pump Station. Certificates and badges were presented by the President, Associate Professor Jenny Gregory, during the National Trust Volunteer Recognition ceremonies held at the Old Observatory, West Perth on Saturday 4 December 2004.

Volunteer Certificates – No 1 Pump Station

Terry Crawford
Pamela Dell
Trevor Garrity
Rob Rippingale

Joan Crawford
Kim Derriman
Keith Jarvis

Bill Cutler
Gerard van Didden
Phil Rennie

Volunteer Certificates – Tranby House Peninsula Farm

Alice Adamson
Lorna Cross

Heather Brown
Marlene Stanley



Property Volunteers

The National Trust would like to acknowledge the vital work of the volunteers who volunteered their time at our properties during the year.

Title	Given Name	Surname	Property
Mrs	Christine	Benton	Bridgedale
Mrs	Joyce	Birch	Bridgedale
Mrs	Margaret Heather	Chalmers	Bridgedale
Mrs	Verna Elizabeth	Davis	Bridgedale
Ms	Yvonne Rose Lynn	Dorricott	Bridgedale
Mrs	Erica Kathryn	Duffett	Bridgedale
Mrs	Rosslyn	Evans	Bridgedale
Mrs	Anita	Kearns	Bridgedale
Mrs	Jana	Mayhew	Bridgedale
Mrs	Norma	Owen	Bridgedale
Mr	Derek Edward	Pallister	Bridgedale
Mrs	Roslyn Joyce	Pallister	Bridgedale
Mrs	Pamela	Taylor	Bridgedale
Mrs	Maureen	Thurston	Bridgedale
Mr	Eric	Tillman	Bridgedale
Mrs	Lorraine Margaret	Walster	Bridgedale
Mrs	Miriam Ruth	Young	Bridgedale
Mr	Nathan Kendall	McQuoid	Corackerup
Ms	Janice	Barker	East Perth Cemeteries
Mr	John	Breedveld	East Perth Cemeteries
Mr	Colin	Caughey	East Perth Cemeteries
Mrs	Robin	Creswell	East Perth Cemeteries
Mr	Graeme	Gerrans	East Perth Cemeteries
Mrs	Valmae	Hogan	East Perth Cemeteries
Mr	John Ruri	James	East Perth Cemeteries
Miss	Thelma	Jones	East Perth Cemeteries
Mrs	Flora May	MacDonald	East Perth Cemeteries
Mr	Lyall	Page	East Perth Cemeteries
Mrs	Carol	Sharp	East Perth Cemeteries
Mrs	Pat	Spirek	East Perth Cemeteries
Ms	Catherine Anne	Czerw	No 1 Pump Station
Ms	Alethea	du Bolay	No 1 Pump Station
Mrs	Norma	Lambert	No 1 Pump Station
Mr	Frank	Mansfield	No 1 Pump Station
Mr	Frank	Mansfield	No 1 Pump Station
Mr	Don	Young	No 1 Pump Station
Mr	Michael Anthony	Alosi	Old Blythewood
Mrs	Eileen	Blacklock	Old Blythewood
Mr	Ian	Campbell	Old Blythewood
Mrs	Olive Marie	Campbell	Old Blythewood
Ms	Susan	Cronin	Old Blythewood
Ms	Yvonne Annie	Dickson	Old Blythewood

NATIONAL TRUST OF AUSTRALIA (WA)
PROGRAM REPORT – COMMUNITY AND OUTREACH
FOR THE YEAR ENDED 30 JUNE 2005



Mr	James Andrew	Feakes	Old Blythewood
Mrs	Rosa Caroline	Feakes	Old Blythewood
Mrs	Ruby Elizabeth	Gilbert	Old Blythewood
Mrs	Susanne Margaret	Gillett	Old Blythewood
Ms	Wendy	Johnson	Old Blythewood
Mrs	Margaret	King	Old Blythewood
Mr	Robert Henry	King	Old Blythewood
Mrs	Aileen Jean	Martin	Old Blythewood
Mr	John Arthur	Martin	Old Blythewood
Ms	Kathy Christine	Moore	Old Blythewood
Mrs	Sheila Margaret	Robinson	Old Blythewood
Miss	Rachel Ann	Wilson	Old Blythewood
Mr	Bruce	Wright	Old Blythewood
Mrs	Cheryl	Wright	Old Blythewood
Mrs	Margaret	Anderson	Old Farm Strawberry Hill
Mrs	Nancy	Anderson	Old Farm Strawberry Hill
Mrs	June Pamela	Bailey	Old Farm Strawberry Hill
Mrs	Nancy	Baird	Old Farm Strawberry Hill
Mrs	Ella	Bickell	Old Farm Strawberry Hill
Mrs	Jacqueline	Carter	Old Farm Strawberry Hill
Mrs	Rosemary	Cunningham	Old Farm Strawberry Hill
Mrs	Sally	Davies	Old Farm Strawberry Hill
Mrs	Josephine	Dixon	Old Farm Strawberry Hill
Mrs	Jennifer	Fisher	Old Farm Strawberry Hill
Mr	Denys James	Freer	Old Farm Strawberry Hill
Mrs	Lorraine	Freer	Old Farm Strawberry Hill
Mrs	Betty Joan	Gaze	Old Farm Strawberry Hill
Mrs	Noel	Gorham	Old Farm Strawberry Hill
Mrs	Iris Angela	Grant	Old Farm Strawberry Hill
Mrs	Yvonne	Groves	Old Farm Strawberry Hill
Mrs	Shirley	Hall	Old Farm Strawberry Hill
Ms	Linda Ruth	Harloe	Old Farm Strawberry Hill
Mrs	Jillian	Henderson	Old Farm Strawberry Hill
Mrs	Jennifer	Howard	Old Farm Strawberry Hill
Mrs	Janet Hastie	Kelly	Old Farm Strawberry Hill
Mrs	Elizabeth	Kendall	Old Farm Strawberry Hill
Mrs	Grace Lorraine	Knight	Old Farm Strawberry Hill
Mrs	Janet Harley	Larard	Old Farm Strawberry Hill
Mrs	Shirley	Lever	Old Farm Strawberry Hill
Mrs	Julie	Lund	Old Farm Strawberry Hill
Mr	Stewart John	Madson	Old Farm Strawberry Hill
Mrs	Val	Marshall	Old Farm Strawberry Hill
Mrs	Wilma	Martin	Old Farm Strawberry Hill
Mrs	Sally Katharine Pierce	Milne	Old Farm Strawberry Hill
Ms	Valerie Anne	Milne	Old Farm Strawberry Hill
Mrs	Janine	Mingonie	Old Farm Strawberry Hill
Mrs	Ruth	Moir	Old Farm Strawberry Hill
Mrs	Audrey	Old	Old Farm Strawberry Hill
Mr	Richard Anthony	Quinn	Old Farm Strawberry Hill
Mrs	Denise	Reynalds	Old Farm Strawberry Hill

NATIONAL TRUST OF AUSTRALIA (WA)
PROGRAM REPORT – COMMUNITY AND OUTREACH
FOR THE YEAR ENDED 30 JUNE 2005



Mrs	Margaret	Richardson	Old Farm Strawberry Hill
Mrs	Elizabeth Robyn	Sandilands	Old Farm Strawberry Hill
Mr	David	Shaw	Old Farm Strawberry Hill
Ms	Margaret	Smith	Old Farm Strawberry Hill
Mrs	Marilyn	Smith	Old Farm Strawberry Hill
Mrs	Enid Constance	Tassell	Old Farm Strawberry Hill
Mrs	Denise Phyllis	Tilbrook	Old Farm Strawberry Hill
Mrs	Elizabeth	Trevenen	Old Farm Strawberry Hill
Mrs	Helen	Tuckett	Old Farm Strawberry Hill
Mr	James	Walker	Old Farm Strawberry Hill
Mrs	Margaret	West	Old Farm Strawberry Hill
Ms	Shelley	Bertola	Old Observatory
Ms	Samantha Jane	Bolton	Old Observatory
Ms	Anne	Brake	Old Observatory
Miss	Haley	Chandler	Old Observatory
Miss	Laura	Colman	Old Observatory
Ms	Joanna Louise	Ellis	Old Observatory
Mrs	Diana	Frylinck	Old Observatory
Mr	Karl Clement	Haynes	Old Observatory
Mrs	Helen Grace	Jakovich	Old Observatory
Mrs	Patricia Edith	MacKnay	Old Observatory
Ms	Sarah	Murphy	Old Observatory
Mrs	Terry	Parsons	Old Observatory
Mr	Tom	Perrigo	Old Observatory
Ms	Kelly	Rippingale	Old Observatory
Ms	Karolyn Mary	Sainsbury	Old Observatory
Mr	Roy Tuart	Stewart	Old Observatory
Ms	Helena	Waldmann	Old Observatory
Mr	David	Fairclough	Settler's Cottage
Mr	Charlie	Tricoli	Taddy Creek
Mrs	Stella	Tricoli	Taddy Creek
Mr	Ray	Acaster	Tranby House
Mrs	Alice	Adamson	Tranby House
Ms	Heather Joy	Brown	Tranby House
Mr	David	Chen	Tranby House
Mrs	Peggy	Clarke	Tranby House
Mrs	Jillian	Constantine	Tranby House
Mrs	Margaret Mary	Cornell	Tranby House
Mrs	Lorna Anne	Cross	Tranby House
Mrs	Krystyna Maria	Curtis	Tranby House
Mrs	Zelda Edwina	Dickinson	Tranby House
Ms	Lynette	Doehring	Tranby House
Mr	John Anthony	Frost	Tranby House
Mrs	Dorothy Merle	Gardiner	Tranby House
Mrs	Pamella	Hall	Tranby House
Mr	Robert	Henderson	Tranby House
Mrs	Christina Mary	Ing	Tranby House
Mr	Bruce Hector Charles	James	Tranby House
Mrs	Gisella	Kramer	Tranby House
Mrs	Barbara	Lewis	Tranby House

NATIONAL TRUST OF AUSTRALIA (WA)
PROGRAM REPORT – COMMUNITY AND OUTREACH
FOR THE YEAR ENDED 30 JUNE 2005



Mr	Peter	Lewis	Tranby House
Ms	Jennifer	Marshall	Tranby House
Mr	James	McCormick	Tranby House
Mr	Ian	McDonald	Tranby House
Mrs	Shirley	McDonald	Tranby House
Mr	John Alexander	McKenzie	Tranby House
Mrs	Mary Leah	McKenzie	Tranby House
Ms	Gwen	McKerrow	Tranby House
Mrs	Joan	McNamara	Tranby House
Mr	Robert Bruce	Mitchell	Tranby House
Mrs	Daphne	Murphy	Tranby House
Mrs	Caroline	O'Conner	Tranby House
Mrs	Denise	O'Keefe	Tranby House
Mr	Trevor	O'Keefe	Tranby House
Ms	Judith	O'Sullivan	Tranby House
Mr	Fred	Saunders	Tranby House
Mrs	Maude Constance	Simmons	Tranby House
Miss	Megan	Snow	Tranby House
Ms	Marlene Myrtle	Stanley	Tranby House
Mrs	Shirley	Suriano	Tranby House
Mr	Anton	Van Royen	Tranby House
Mrs	Lois	Waller	Tranby House
Mrs	Ruth Mary	Williams	Tranby House
Mrs	Nola	Angus	Wonnerup House
Mrs	Rhonda	Bartlett	Wonnerup House
Mr	Terry	Bartlett	Wonnerup House
Mrs	Bonnie Dorothy	Boyland	Wonnerup House
Mrs	Irene Enid	Collins	Wonnerup House
Mr	Kenneth Charles	Collins	Wonnerup House
Mrs	Olive Roberta (Bobbie)	Davies	Wonnerup House
Mrs	Gwenyfred Alice	Gennery	Wonnerup House
Ms	Mary	Hiscox	Wonnerup House
Mrs	Kathy	Rutgers	Wonnerup House
Mrs	Imelda	Slee	Wonnerup House
Mrs	Annette Jean	Thomas	Wonnerup House
Mrs	Ann Louise	Wood	Wonnerup House
Mrs	Elizabeth Mary	Atkins	Woodbridge
Mrs	Robin Joy	Attwood	Woodbridge
Mr	Filson	Beckett	Woodbridge
Mrs	Valerie Joy	Beckett	Woodbridge
Mrs	Margaret	Best	Woodbridge
Mr	Ian Christopher	Bonney	Woodbridge
Mrs	Eileen Winifred Vere	Brown	Woodbridge
Mr	Gregory	Cailes	Woodbridge
Mrs	Sandra	Cailes	Woodbridge
Mrs	Valerie	Callard	Woodbridge
Mrs	Kathleen	Catton	Woodbridge
Mrs	Annette Dorothy	Chesson	Woodbridge
Mrs	June Elizabeth	Chesson	Woodbridge
Mrs	Jennifer Joan	Cocks	Woodbridge

NATIONAL TRUST OF AUSTRALIA (WA)
PROGRAM REPORT – COMMUNITY AND OUTREACH
FOR THE YEAR ENDED 30 JUNE 2005



Ms	Margaret Anne	Cream	Woodbridge
Mrs	Audrey	Crofts	Woodbridge
Mrs	Maureen Anne	Cross	Woodbridge
Mrs	Elisabeth Emily	Darragh	Woodbridge
Mrs	Liane Sandra	Davies	Woodbridge
Mr	Alan	Dayman	Woodbridge
Mrs	Heather Jean	Dayman	Woodbridge
Mrs	Ursula Marie	D'Estcourt - Sefton	Woodbridge
Mrs	Gale Marilyn	Devenish	Woodbridge
Ms	Julie	Doyle	Woodbridge
Mrs	Gwenda Alice	Drennan	Woodbridge
Ms	Dawn Roberta	Dybing	Woodbridge
Mrs	Irene Patricia	Gannaway	Woodbridge
Mr	Lindsay Thomas	Goodwin	Woodbridge
Miss	Edith Elizabeth	Harler	Woodbridge
Mrs	Cynthia Mary	Hudson	Woodbridge
Mrs	Ruth	Johnson	Woodbridge
Ms	Rosemary (Rose)	Kailis	Woodbridge
Mrs	Kim Lee	Katzer	Woodbridge
Mrs	Medic (Dorothy)	Kirk	Woodbridge
Mrs	Jean Lawson	Malcolm	Woodbridge
Mrs	Merle	McAlpine	Woodbridge
Mrs	Lynette Gail	Miles	Woodbridge
Mrs	Dawn Mary	Mitchell	Woodbridge
Mrs	Lynette	Oliver	Woodbridge
Mrs	Margaret Hannah	Pike	Woodbridge
Mrs	Margaret Dawn	Prior	Woodbridge
Mr	Philip	Purdom	Woodbridge
Dr	Anne	Read	Woodbridge
Miss	Ann Patricia	Rigby	Woodbridge
Mr	Fredrick Charles	Shaw	Woodbridge
Mrs	Pauline	Shaw	Woodbridge
Mr	Max Frank	Stewart	Woodbridge
Mrs	Roslyn Frances	Stewart OAM	Woodbridge
Mr	Vincent Wallace	Taylor	Woodbridge
Mrs	Lesley Jean	Thompson	Woodbridge
Mrs	Kate	Thompson-Turco	Woodbridge
Ms	Tracey Michelle	Turich	Woodbridge
Miss	Lauren	Verschuer	Woodbridge
Mrs	Marie Anne	Verschuer	Woodbridge
Mr	Philip	Verschuer	Woodbridge
Mrs	Helen	Walker	Woodbridge
Mr	Richard	Waller	Woodbridge
Mrs	Rosemary	Waller	Woodbridge
Ms	Daphne Lynette	Waudby	Woodbridge
Ms	Mary	West	Woodbridge
Mrs	Heather Gaye	Whykes	Woodbridge
Miss	Renee	Whykes	Woodbridge



HERITAGE IDENTIFICATION:

Key Objectives

- To provide leadership and guidance to the community on heritage matters.
- To continue to classify places and objects of national, state and local heritage significance
- To maintain and enhance professional and community access to National Trust documentation and photographs relating to heritage places (built, natural and indigenous)

Key Strategies

- Develop and maintain links with:
 - Public sector, politicians and local government.
 - Relevant key heritage and conservation organisations
 - Relevant private sector organisations
 - Members and volunteers.
- Establish, maintain and promote clear guidelines for actions, which inform and influence decision makers on heritage issues.
- Continue to classify places and objects of national, state and local heritage significance.
- Create opportunities for the community to become actively involved in the identification and assessment of heritage places and objects.
- Provide relevant and timely information on heritage issues including legislation, policies, practices and events.

Classification Standing Committee

Operating as a sub-committee of Council, the Classification Standing Committee conducts a peer review of the documentation for places that are presented for classification by the Technical Committees of the Trust. The Classification Standing Committee is also mandated to monitor evolving standards and practice in heritage identification to ensure that the Classification process of the National Trust of Australia (WA) continues to be a valued resource promoting community heritage awareness.

During the reporting period, the Committee held 8 meetings and, based on submissions from Technical Committees, recommended to Council that 12 heritage places / objects be Classified by the National Trust of Australia (WA). Membership of the Committee is open to Councilors and the Chairs of Technical Committees.

Arising from concern that identification of the State's heritage is proceeding slowly, the Committee is examining trials of Interim Classification from Municipal Inventories from selected local authorities as a means of more rapidly broadening the Classified base and recognizing the identified significance embodied in the Municipal Inventory process at Local Government level.



Classifications for 2004/2005

- Denmark Agricultural College – Shire of Denmark
- Former Government Quarries at Boya – Shire of Mundaring
- Guildford Road Bridge – City of Swan
- Jack Carins' Camp – Shire of Coolgardie
- Parliament House – City of Perth
- Phoebe Abbey's House – City of Busselton
- Point Moore Lighthouse – City of Geraldton
- Princess Royal Battery – City of Albany
- Raine Square Precinct – City of Perth
- Roleystone Community Church Hall – City of Armadale
- St George's Church – Shire of Capel
- St Patrick's Church – City of Stirling

Built Environment Working Committee

The Built Environment Working Committee has devoted considerable effort in revising its Terms of Reference during 2004-2005. In addition to this, a review of classification documentation is underway and priority has been given to making classification documentation electronically available, at first for internal research purposes but also with consideration of making this documentation easily accessible to the general public through an interactive database on the World Wide Web. The committee has assisted the Heritage Department of the National Trust in the production of a major report on the ABC Sound Broadcasting and Television Studios on Adelaide Terrace. The committee is composed of volunteers with expertise in the field of conservation heritage. A new members package has been assembled. The BEWC presented 10 places to the CSC for consideration by Council for classification. It met nine times during the year.

Fiona Bush (Chair)	John Stephens (Deputy Chair)
Inger Russell (Secretary)	Kristy Bizzaca
Denise Morgan	Barbara Hale
Judi Murrury	Don Newman
	Gail Dodd

Art Deco Committee and Art Deco Society

In addition to its own Art Deco Committee, the National Trust works cooperatively with the Art Deco Society of WA and provides in kind and sponsorship support to the Society's programs in the heritage identification of 20th century architecture and the Art Deco Awards.

Vyonne Geneve (Chair)	Rosalind Lawe Davies	Jean Clarke
Annelle Perotti	Elisabeth Bacich	Theo Bredmeyer CBE
Ron Facius	Leanne Mifflin	Selby Clyde
Tina Spadaccini		



Railway Heritage Committee

Continuing their important work this Committee met 6 times during the year. The committee's main work over the past year has been the continuing compilation of a database of all locomotives, carriages, freight wagons and others moveable rail-mounted items preserved throughout Western Australia.

Vital to this Committee's success, Chair Ms Philippa Rogers, also represents the NTWA on the Midland Redevelopment Authority's Railway Heritage Panel that is investigating the establishment of a rail heritage centre at the former Workshops site.

Philippa Rogers (Chair) Tony Milner	David Whiteford David Kelsall	Graham Watson
--	----------------------------------	---------------

Public Art Committee

The Committee undertakes two major tasks: one is to survey outdoor cultural artifacts across the State for a national database, the other is to prepare selected examples for classification by the Trust. The Committee meets as required under the chair of Dr Robyn Taylor with representative skills appropriate to task at hand.

Defence Heritage Committee

The major project of the Committee was the further development of the Defence Heritage Sites database and integration with the Heritage Classification Database of the National Trust. The database now contains information of over 2,800 sites, which are related to defence heritage through ownership or use from Colonial to the present time.

The Defence heritage Committee presented the second of its seminar series entitled "Fortress Fremantle" with a capacity attendance. Further presentations in related subject areas by members of the Committee were included in the Fremantle heritage Week program.

A major field trip to Geraldton with the support of the Built Environment Working Group updated classifications and documentation on the 45 sites on the Geraldton Defence Heritage Trail

Graham Horne (Chair) Helen Birch John Stephens	Robert Mitchell Pam Jackes Paul Bridges	Lindsay Peet Mark Bevins Nadine Gibbons
--	---	---



HERITAGE AWARENESS

National Trust Endangered Places 2004/2005:

As part of a national heritage awareness program, the Australian Council of National Trusts produces an annual listing of Endangered Places. The list is designed to highlight the range of threats to heritage across Australia and to bring these threats to public attention. In 2004/05 four heritage places in Western Australia were highlighted. Five additional places were placed on WA's Endangered Places list, of which one, 27 The Esplanade was demolished. All listed Endangered Places were reviewed and the information updated.

Dampier Rock Art Precinct

The National Trust continues to play an important role in promoting the appropriate management of this unique cultural and scientific site. The Trust was successful in gaining a commitment from the Dampier Port Authority to desist in any further development on identified heritage sites irrespective of approval granted through the state heritage regime until the National Heritage listing process had been completed. In addition to this the Trust was represented at the premier of "Visions of the Past" an international travelling exhibition, in Karratha. This along with the urging of the Trust has seen a group of concerned citizens being formed in Karratha. Also of note, the Heritage Council of Western Australia has agreed that their Act enables them to assess the heritage significance of this place, they have however not proceeded with this assessment as this is underway at a National level. The conclusion of the National Heritage listing process is expected in September 2005.

State of the Environment

The State of the Environment reporting process was begun in September 2003, with the announcement by the Minister of the Environment that the Environment Protection Authority (EPA) would undertake a State of the Environment reporting cycle to be completed in late 2006. A significant difference to the State of the Environment Report 1998, would be the inclusion of Natural and Cultural Heritage as a reporting theme.

The Heritage working group was established in September 2004, following public consultation on issues and concerns for each reporting theme. The National Trust was represented by the Heritage and Information Services Coordinator, Mr Karl Haynes. The group has been meeting on a monthly basis, and is in the process of finalizing the draft report.

The Heritage theme has been divided into a number of subsections, statutory identification and recognition, Conservation and loss, and Awareness, appreciation and support. Throughout this process the National Trust has



advocated a holistic approach to heritage identification and management, recognizing the need for further integration between various agency charged with responsibility for the Natural, Built and Indigenous Heritage. The draft report will be available in October 2005.

The Heritage working group was made up of the following members:

Mr Ian Baxter- Heritage Council of Western Australia (Chair)
Mr Mike Betham - Heritage Council of Western Australia
Dr Sue Graham Taylor - WA Museum / Conservation Council
Dr Libby Matiske - Consultant
Mr Denis Callaghan - Department of Indigenous Affairs
Ms Carolyn Marshall - Department of Housing and Works
Mr Ron Parker - Consultant
Mr Peter Sharp - Department of Conservation and Land Management
Mr Karl Clement Haynes – National Trust of Australia (WA)
Mr Geoff Comben - Department of Local Government and Regional Development
Ms Tara Cherrie - Department for Planning and Infrastructure
Mr Noel Nannup - Consultant



EDUCATION

Strategic Plan

Development of NTWA Education Strategic Plan for schools and public education. Approved by Council, February 2005.

Schools Education

Development and delivery of Professional Development Heritage Education seminars for state, catholic and independent primary and secondary teachers in conjunction with WA Museum and Alternative Independent Schools of WA.

Planning and implementation for science based education programs to be delivered at NTWA property, No 1 Pump Station - a collaboration with Scitech staff.

Publication and promotion of the Golden Pipeline Teachers Resources and Activity File for use in schools and No 1 Pump Station.

Workshop presentations at schools and National Trust properties to promote valuing heritage.

Participation as a member of Curriculum Council Post Compulsory History Steering Committee ensuring heritage education as a component of the course.

Development and implementation of annual National Trust Photo and Creative Writing Competition for school aged students – valuing heritage in the community.

Development and implementation of Heritage workshops and presentations for schools relating to the Year of the Built Environment.

Development of schools programs to be held on site at York Courthouse property and for the National Trust website.

Collaboration with WA Water Corporation for presentation at Ground Water Festival and the development of education program to extend Waterwise Schools project at No 1 Pump Station.

Development for ANZAC exhibition and program to be delivered at Woodbridge for middle primary to upper secondary schools in conjunction with their ANZAC teaching programs.

Working with volunteers at all National Trust properties to develop schools education programs that link to the WA Curriculum Framework and are relevant to the place including resource development for use at individual places.

NATIONAL TRUST OF AUSTRALIA (WA)

PROGRAM REPORT – EDUCATION
FOR THE YEAR ENDED 30 JUNE 2005



Planning and delivery at schools Arts/Literature festivals – linking heritage to the Arts.

Supervising two week practicum with 2nd year student from Edith Cowan University.

Development of *Valuing Our Heritage* document in conjunction with student teacher for use by newly appointed teachers to link heritage education to Values of the WA Curriculum Framework.

Advising teachers how to link heritage education programs through WA Curriculum Framework Society & Environment learning outcomes with Values Education.

Public Education

Partnership with TAFE for Certificate IV Cultural and Heritage Tourism course. Presentations to TAFE students.

In association with TAFE students, developing and delivering Seniors Week presentations and activities.

Planning and grant application for Writers in Museums Project (2005/06) in collaboration with Museums Australia, WA State Literature Centre and Country Arts.

Partnering with City of Albany and Vancouver Arts Centre for Community Arts project for NTWA Old Farm, Strawberry Hill property.

Development of children's public education activity for No 1 Pump Station.

Development and implementation of holiday workshops for No 1 Pump Station.

Development of materials for public display and activities for children to be held on site at York Courthouse Complex.

Presentation of half day education workshop at National Trust Volunteers Seminar.

Articles written for NTWA publication Trust News, WA Ed Magazine and The History Bulletin – focus on heritage education.

Judge for Towns of Cottesloe, Mosman Park and Peppermint Grove *Now and Then* literature competition.

Planning and implementation of public education lecture series to celebrate the life of CY O'Connor – Engineer in Chief, Goldfields Water Supply Scheme.

Planning for Visions Festival with Mundaring Community groups.

NATIONAL TRUST OF AUSTRALIA (WA)

PROGRAM REPORT – EDUCATION
FOR THE YEAR ENDED 30 JUNE 2005



Coordination of Perth Education Providers meetings for education staff at all Perth based agencies.

Risk management workshops to consider risks through education at all NTWA properties.

NTWA online education programs

Development of website for collaboration with and links to Children's Book Council activities for Children's Book Week – Reading Rocks.

Development of the National Trust's interactive education website Tour Through Time Webquest.

Partnership with The [Le@rning](#) Federation for development of website resources.

Professional Development

Attendance at conferences – ACE and ACEL Checking the Pulse; History Teachers WA

Preparation for study leave in UK based with Heritage Lotteries Fund.



AUDITOR GENERAL

INDEPENDENT AUDIT OPINION

To the Parliament of Western Australia

**THE NATIONAL TRUST OF AUSTRALIA (W.A.)
FINANCIAL STATEMENTS FOR THE YEAR ENDED 30 JUNE 2005**

Audit Opinion

In my opinion,

- (i) the controls exercised by The National Trust of Australia (W.A.) provide reasonable assurance that the receipt, expenditure and investment of moneys, the acquisition and disposal of property, and the incurring of liabilities have been in accordance with legislative provisions; and
- (ii) the financial statements are based on proper accounts and present fairly in accordance with applicable Accounting Standards and other mandatory professional reporting requirements in Australia and the Treasurer's Instructions, the financial position of the Council at 30 June 2005 and its financial performance and cash flows for the year ended on that date.

Scope

The Council's Role

The Council is responsible for keeping proper accounts and maintaining adequate systems of internal control, preparing the financial statements, and complying with the Financial Administration and Audit Act 1985 (the Act) and other relevant written law.

The financial statements consist of the Statement of Financial Performance, Statement of Financial Position, Statement of Cash Flows and the Notes to the Financial Statements.

Summary of my Role

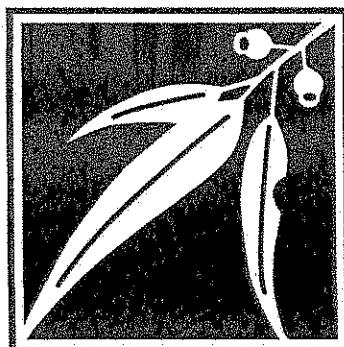
As required by the Act, I have independently audited the accounts and financial statements to express an opinion on the controls and financial statements. This was done by looking at a sample of the evidence.

An audit does not guarantee that every amount and disclosure in the financial statements is error free. The term "reasonable assurance" recognises that an audit does not examine all evidence and every transaction. However, my audit procedures should identify errors or omissions significant enough to adversely affect the decisions of users of the financial statements.

D D R PEARSON
AUDITOR GENERAL
28 October 2005



THE NATIONAL TRUST OF AUSTRALIA (W.A.)



**FINANCIAL STATEMENTS
FOR THE YEAR ENDED 30 JUNE 2005**

THE NATIONAL TRUST OF AUSTRALIA (W.A.)
CERTIFICATION OF FINANCIAL STATEMENTS
FOR THE YEAR ENDED 30 JUNE 2005



The accompanying financial statements of the National Trust of Australia (WA) have been prepared in compliance with the provisions of the Financial Administration and Audit Act 1985 from proper accounts and records to present fairly the financial transactions for the financial year ending 30 June 2005 and the financial position as at 30 June 2005.

At the date of signing we are not aware of any circumstances, which would render any particulars included in the financial statements misleading or inaccurate.

Dr Jenny Gregory
President
10 August 2005

Pasquo Cirillo
Principal Accounting Officer
10 August 2005

Professor David Dolan
Chairman
10 August 2005



THE NATIONAL TRUST OF AUSTRALIA (W.A.)
STATEMENT OF FINANCIAL PERFORMANCE
FOR THE YEAR ENDED 30 JUNE 2005



	Note	2005 \$000	2004 \$000
COST OF SERVICES			
Expenses from ordinary activities			
Employee expenses	2	1,630	1,569
Supplies and services	3	1,091	990
Depreciation expense	4	232	229
Administration expenses	5	353	309
Accommodation expenses	6	289	344
Capital user charge	7	438	455
Carrying amount of disposal of non-current assets	8	151	365
Other expenses from ordinary activities	9	132	148
Total cost of services		<u>4,316</u>	<u>4,409</u>
Revenues from ordinary activities			
<i>Revenue from operating activities</i>			
User charges and fees	10	367	354
Trading profit/(loss)	11	14	8
Grants & subsidies	12	225	95
<i>Revenue from non-operating activities</i>			
Interest revenue		182	279
Other revenues from ordinary activities	13	244	349
Proceeds from disposal of non-current assets	8	218	212
Total revenues from ordinary activities		<u>1,250</u>	<u>1,297</u>
NET COST OF SERVICES	28 (b)	<u>(3,066)</u>	<u>(3,112)</u>
REVENUES FROM STATE GOVERNMENT			
Service appropriation	14	1,253	1,093
Grants from government	15	666	225
Assets assumed/(transferred)	14	500	0
Total revenues from State Government		<u>2,419</u>	<u>1,318</u>
CHANGE IN NET ASSETS		(647)	(1,794)
Net increase in asset revaluation reserve		1,727	1,324
Total revenues, expenses and valuation adjustments recognised directly in equity		<u>1,727</u>	<u>1,324</u>
Total changes in equity other than those resulting from transactions with WA State Government as owners		<u>1,080</u>	<u>470</u>

The Statement of Financial Performance should be read in conjunction with the accompanying notes.



THE NATIONAL TRUST OF AUSTRALIA (W.A.)
STATEMENT OF FINANCIAL POSITION
AS AT 30 JUNE 2005



	Note	2005 \$000	2004 \$000
Current Assets			
Cash assets	28 (a)	2,182	4,091
Restricted cash assets	16	247	234
Inventories	17	35	39
Receivables	18	38	51
Amounts receivable for services	19	421	186
Other assets	20	26	26
Total Current Assets		<u>2,949</u>	<u>4,627</u>
Non-Current Assets			
Plant, equipment and vehicles	21	342	379
Land, buildings and artefacts	22	26,556	23,205
Total Non-Current Assets		<u>26,898</u>	<u>23,584</u>
Total Assets		<u>29,847</u>	<u>28,211</u>
Current Liabilities			
Payables	23	314	81
Non-interest bearing liabilities	24	0	10
Provisions	25	143	111
Other liabilities	26	33	70
Total Current Liabilities		<u>490</u>	<u>272</u>
Non-Current Liabilities			
Provisions	25	102	94
Total Non-Current Liabilities		<u>102</u>	<u>94</u>
Total Liabilities		<u>592</u>	<u>366</u>
NET ASSETS		<u>29,255</u>	<u>27,845</u>
Equity			
Contributed equity	27	1,536	1,197
Reserves		16,995	15,277
Accumulated surplus		10,724	11,371
TOTAL EQUITY		<u>29,255</u>	<u>27,845</u>

The Statement of Financial Position should be read in conjunction with the accompanying notes.



**THE NATIONAL TRUST OF AUSTRALIA (W.A.)
STATEMENT OF CASH FLOWS
FOR THE YEAR ENDED 30 JUNE 2005**



	Note	2005 \$000	2004 \$000
CASH FLOWS FROM STATE GOVERNMENT			
Output appropriations		957	1,014
Capital contributions		339	356
Holding account drawdowns		61	44
Grants from government		666	225
Net cash provided by State Government		<u>2,023</u>	<u>1,639</u>
Utilised as follows:			
CASH FLOWS FROM OPERATING ACTIVITIES			
Payments			
Employee costs		(1,604)	(1,678)
Supplies and services		(1,732)	(1,920)
Capital user charge		(438)	(455)
GST payments on purchases		(243)	(244)
GST payments to taxation authority		(5)	(12)
Receipts			
User charges and fees		637	819
Grants and contributions		225	95
Interest received		188	283
GST receipts on sales		122	86
GST receipts from taxation authority		151	134
Net cash used in operating activities	28 (b)	<u>(2,699)</u>	<u>(2,892)</u>
CASH FLOWS FROM INVESTING ACTIVITIES			
Proceeds from sale of non-current physical assets		218	212
Purchase of non-current physical assets		(1,428)	(983)
Net cash used in investing activities		<u>(1,210)</u>	<u>(771)</u>
CASH FLOWS FROM FINANCING ACTIVITIES			
Repayment of borrowings		(10)	(20)
Net cash used in financing activities		<u>(10)</u>	<u>(20)</u>
Net increase/(decrease) in cash held		(1,896)	(2,044)
Cash assets at the beginning of the financial year		4,325	6,369
CASH ASSETS AT THE END OF THE FINANCIAL YEAR	28 (a)	<u>2,429</u>	<u>4,325</u>

The Statement of Cash Flows should be read in conjunction with the accompanying notes.



THE NATIONAL TRUST OF AUSTRALIA (W.A.)
NOTES TO THE FINANCIAL STATEMENTS
FOR THE YEAR ENDED 30 JUNE 2005



1 Significant accounting policies

The following accounting policies have been adopted in the preparation of the financial statements. Unless otherwise stated these policies are consistent with those adopted in the previous year.

General Statement

The financial statements constitute a general-purpose financial report, which has been prepared in accordance with Australian Accounting Standards, Statements of Accounting Concepts and other authoritative pronouncements of the Australian Accounting Standards Board, and Urgent Issues Group (UIG) Consensus Views as applied by the Treasurer's Instructions. Several of these are modified by the Treasurer's Instructions to vary application, disclosure, format and wording. The Financial Administration and Audit Act and the Treasurer's Instructions are legislative provisions governing the preparation of financial statements and take precedence over Accounting Standards, Statements of Accounting Concepts and other authoritative pronouncements of the Australian Accounting Standards Board, and UIG Consensus Views. The modifications are intended to fulfill the requirements of general application to the public sector, together with the need for greater disclosure and also to satisfy accountability requirements.

If any such modification has a material or significant financial affect upon the reported results, details of that modification and where practicable, the resulting financial effect, are disclosed in individual notes to these financial statements.

Basis of Accounting

The financial statements have been prepared on the accrual basis of accounting using the historical cost convention, with the except for certain assets and liabilities which, as noted, are measured at fair value.

(a) Service Appropriations

Service Appropriations are recognised as revenues in the period in which the National Trust of Australia (WA) gains control over the appropriated funds. The National Trust of Australia (WA) gains control of appropriated funds at the time those funds are deposited into the National Trust of Australia (WA) bank account or credited to the holding account held at the Department of Treasury and Finance.

(b) Contributed Equity

Under UIG 38 "Contributions by Owners Made to Wholly-Owned Public Sector Entities" transfers in the nature of equity contributions must be designated by the Government (owners) as contributions by owners (at the time of, or prior to transfer) before such transfers can be recognised as equity contributions in the financial statements. Capital contributions (appropriations) have been designated as contributions by owners and have been credited directly to Contributed Equity in the Statement of Financial Position. Capital appropriations, which are repayable to the Treasurer, are recognised as liabilities.

(c) Heritage Assets Under Trust Control

The National Trust of Australia (WA) controls heritage assets, which include buildings, the land on which they reside, and moveable heritage in the form of antiques and artefacts used to interpret the buildings. Prior to recent amendments to the Land Act 1933, the Trust's control of various land and buildings were empowered by Vesting Orders. These Vesting Orders have been transitioned into the Land Administration Act 1997 as Management Orders.



THE NATIONAL TRUST OF AUSTRALIA (W.A.)
NOTES TO THE FINANCIAL STATEMENTS
FOR THE YEAR ENDED 30 JUNE 2005



Any sale or disposal of heritage assets will be recognised through the Statement of Financial Performance. The gross proceeds from the sale or disposal are recognized as revenue and the carry amount of the asset disposed of as an expense.

The National Trust of Australia (WA) has a policy of valuing heritage assets at fair value, the annual revaluations of the National Trust of Australia (WA)'s land and buildings undertaken by the Valuer General's Office are recognised in the financial statements (see note 22).

Increments have been transferred to the asset revaluation reserve except to the extent that the increment reverses a previous decrement to the same class of assets, which was recognised as an expense in a prior period's Statement of Financial Performance. Decrements have been offset against previous increments (if any) relating to the same class of assets and the balance recognised through the Statement of Financial Performance.

Land & Buildings

All land and buildings are brought in at net market value or current use value (after taking in to account encumbrances) in accordance with the Government Property Register (see note 22).

Moveable Artefacts

Any heritage assets gifted to the Trust are recognised through the Statement of Financial Performance as donations of heritage assets at a market value as determined by Council of the National Trust of Australia (WA), based on advice from the Valuer General's Office and the Australian Valuation Office.

Valuations of artefacts have been performed by Mr. Patrick Bowen (B.A. (Hons.) A.R.I.C.S MAVAA Commonwealth Valuer) of Phillips Fine Art Auctioneers and Valuers. Valuations have been based on market value. Valuations of artefacts at all properties were completed from 1990 through to 2002. Valuation of artefacts will continue to be added to the register, as they become available.

Other assets are recognised at cost.

(d) Grants and Other Contributions Revenue

Grants, donations, gifts and other non-reciprocal contributions are recognised as revenue when the National Trust of Australia (WA) obtains control over the assets comprising the contributions. Control is normally obtained upon their receipt.

Contributions are recognised at their fair value. Contributions of services are only recognised when a fair value can be reliably determined and the services would be purchased if not donated.

(e) Revenue Recognition

Revenue from the sale of goods and the disposal of other assets and the rendering of services, is recognized when the National Trust of Australia (WA) has passed control of the goods or other assets or delivery of the service to the customer.

Revenue received from admissions and membership fees are recognized by the National Trust of Australia (WA) at the time the revenue is received.

(f) Acquisition of Assets

The cost method of accounting is used for all acquisition of assets. Cost is measured as the fair value of the assets given up or liabilities undertaken at the date of acquisition plus incidental costs directly attributable to the acquisition.



THE NATIONAL TRUST OF AUSTRALIA (W.A.)
NOTES TO THE FINANCIAL STATEMENTS
FOR THE YEAR ENDED 30 JUNE 2005



Assets acquired at no cost or for nominal consideration, are initially recognised at their fair value at the date of acquisition.

Assets costing less than \$1,000 are expensed in the year of acquisition (other than where they form part of a group of similar items which are significant in total).

(g) Depreciation of non-Current Assets

All non-current assets having a limited useful life are systematically depreciated over their estimated useful lives in a manner that reflects the consumption of their future economic benefits.

Depreciation is calculated on the straight line basis, using rates, which are reviewed annually. The expected useful lives of each class of depreciable asset are:

Furniture, fixture and fittings	5 years
Plant and office equipment	3 – 5 years
Motor vehicles	5 years
Buildings	100 years
Exhibitions	10 years

Works of art controlled by the National Trust of Australia (WA) are classified as heritage assets. They are anticipated to have very long and indeterminate useful lives. Their service potential has not, in any material sense, been consumed during the reporting period. As such, no amount for depreciation has been recognised in respect of them.

(h) Revaluation of Land, Buildings and Infrastructure

The National Trust of Australia (WA) has a policy of valuing land, buildings and infrastructure at fair value. The annual revaluations of the National Trust of Australia (WA)'s land and buildings undertaken by the Valuer General's Office are recognised in the financial statements. Infrastructure assets are being progressively revalued to fair value under the transitional provisions of AASB 1041(8.12)(b). (See note 22 & 27).

(i) Leases

The National Trust of Australia (WA) has entered into a number of operating lease arrangements for the rent of office equipment where the lessor effectively retains all of the risk and the benefits incident to ownership of the items held under the operating leases. Equal instalments of the lease payments are charged to the Statement of Financial Performance over the leased term as this is representative of the pattern of benefits to be derived from the leased property.

(j) Cash

For the purpose of the Statement of Cash Flows, cash includes cash assets and restricted cash assets net of outstanding bank overdrafts. These include short-term deposits that are readily convertible to cash on hand and are subject to insignificant risk of changes in value.

(k) Inventories

Inventories are valued at the lower of cost and net realisable value. Costs are assigned by the method most appropriate to each particular class of inventory, the majority being valued on a weighted average.



THE NATIONAL TRUST OF AUSTRALIA (W.A.)
NOTES TO THE FINANCIAL STATEMENTS
FOR THE YEAR ENDED 30 JUNE 2005



(l) Receivables

Receivables are recognised at the amounts receivable, as they are due for settlement no more than 30 days from the date of recognition.

Collectability of receivables is reviewed on an ongoing basis. Debts, which are known to be uncollectable, are written off. A provision for doubtful debts is raised where some doubts as to collection exists and in any event where the debt is more than 60 days overdue.

(m) Intangible assets and expenditure carried forward

i. Software

Significant costs associated with the acquisition or development of computer software are capitalised and amortised on a straight-line basis over the period of expected benefit, which varies from three to five years.

ii. Web site Costs

Costs in relation to web sites controlled by the National Trust of Australia (WA) are charged as expenses in the period in which they are incurred unless they relate to the acquisition of an asset, in which case they are capitalised and amortised over the period of expected benefit. Generally, costs in relation to the feasibility studies during the planning phase of a web site, and ongoing costs of maintenance during the operating phase are considered to be expenses. Costs incurred in building or enhancing a web site, to the extent that they represent probable future economic benefits controlled by the National Trust of Australia (WA) that can be reliably measured, are capitalised as an asset and amortised over the period of the expected benefit which vary from three to five years.

(n) Payables

Payables, including accruals not yet billed, are recognised when the National Trust of Australia (WA) becomes obliged to make future payments as a result of a purchase of assets or services. Payables are generally settled within 30 days.

(o) Interest-bearing Liabilities

Bank loans and other loans are recorded at an amount equal to the net proceeds received. Borrowing cost expense is recognized on an accrual basis.

(p) Employee Benefits

Annual leave

This benefit is recognised at the reporting date in respect to employees' services up to that date and is measured at the nominal amounts expected to be paid when the liabilities are settled.

Long service leave

The liability for long service leave expected to be settled within 12 months of the reporting date is recognised in the provisions for employee benefits, and is measured at the nominal amounts expected to be paid when the liability is settled. The liability for long service leave expected to be settled more than 12 months from the reporting date is recognised in the provisions for employee benefits and is measured at the present value of expected future payments to be made in respect of services provided by employees up to the reporting date. Consideration is given, when assessing expected future payments, to expected future wage and salary levels including relevant on costs, experience of employee departures and periods of service. Expected future payments are discounted using market yields at the reporting date on national government bonds with terms to maturity and currency that match, as closely as possible, the estimated future cash outflows.



THE NATIONAL TRUST OF AUSTRALIA (W.A.)
NOTES TO THE FINANCIAL STATEMENTS
FOR THE YEAR ENDED 30 JUNE 2005



This method of measurement of the liability is consistent with the requirements of Australian Accounting Standard AASB 1028 "Employee Benefits".

Superannuation

Staff may contribute to the Pension Scheme, a defined benefits pension scheme now closed to new members, or to the Gold State Superannuation Scheme, a defined benefit lump sum scheme now also closed to new members. All staff who do not contribute to either of these schemes become non-contributory members of the West State Superannuation Scheme, an accumulation fund complying with the Commonwealth Government's Superannuation Guarantee (Administration) Act 1992. All of these schemes are administered by the Government Employees Superannuation Board (GESB).

On June 30, 2004 unfunded liabilities relating to the Pension Scheme and the pre-transfer benefit for employees who transferred to the Gold State Superannuation Scheme were assumed by the Treasurer. The amount assumed by the Treasurer is disclosed at Note 27 Equity.

The liabilities for superannuation charges under the Gold State Superannuation Scheme and West State Superannuation Scheme are extinguished by payment of employer contributions to the Government Employees Superannuation Board (GESB).

The note disclosure required by paragraph 6.10 of AASB 1028 (being the employer's share of the difference between employees' accrued superannuation benefits and the attributable net market value of plan assets) has not been provided. State scheme deficiencies are recognised by the State in its whole of government reporting. The Government Employees Superannuation Board's records are not structured to provide the information for the National Trust of Australia (WA). Accordingly, deriving the information for the National Trust of Australia (WA) is impractical under current arrangements, and thus any benefits thereof would be exceeded by the cost of obtaining the information.

Employee benefit on-costs

Employee benefit on-costs are recognised and included in employee benefit liabilities and costs when the employee benefits to which they relate are recognised as liabilities and expenses. (See notes 2 and 25).

(q) Accrued Salaries

Accrued salaries (refer note 26) represent the amount due to staff but unpaid at the end of the financial year, as the end of the last pay period for that financial year does not coincide with the end of the financial year. The National Trust of Australia (WA) considers the carrying amount approximates net fair value.

(r) Resources Received Free of Charge or For Nominal Value

Resources received free of charge or for nominal value, which can be reliably measured, are recognised as revenues and as assets or expenses as appropriate at fair value.

(s) Comparative Figures

Comparative figures are, where appropriate, reclassified so as to be comparable with the figures presented in the current financial year.

(t) Rounding of amounts

Amounts in the financial statements have been rounded to the nearest thousand dollars, or in certain cases, to the nearest dollar.



THE NATIONAL TRUST OF AUSTRALIA (W.A.)
NOTES TO THE FINANCIAL STATEMENTS
FOR THE YEAR ENDED 30 JUNE 2005



	2004-05	2003-04
	\$000	\$000
2 Employee expenses		
Wages and salaries	1,415	1,392
Superannuation	179	157
Annual leave	29	0
Change in Long Service leave	4	(5)
Other related expenses (i)	3	25
	<u>1,630</u>	<u>1,569</u>
<p>(i) These employee expenses include superannuation, workers compensation premiums and other employment on-costs associated with the recognition of annual and long service leave liability. The related on-costs liability is included in employee benefit liabilities at Note 25.</p>		
3 Supplies and services		
Consultants and contractors	959	814
Materials and repairs	60	87
Travel & accommodation	49	75
Other	23	14
	<u>1,091</u>	<u>990</u>
4 Depreciation		
Furniture, fixture and fittings	10	16
Plant and office equipment	78	106
Vehicles	24	22
Buildings	68	63
Exhibitions	52	22
	<u>232</u>	<u>229</u>
5 Administration expenses		
Communications	169	143
Consumables	126	113
Maintenance	0	1
Other staff costs	58	52
	<u>353</u>	<u>309</u>
6 Accommodation expenses		
Repairs and maintenance	136	165
Occupancy expenses	138	168
Cleaning	15	11
	<u>289</u>	<u>344</u>



THE NATIONAL TRUST OF AUSTRALIA (W.A.)
NOTES TO THE FINANCIAL STATEMENTS
FOR THE YEAR ENDED 30 JUNE 2005



7 Capital user charge

438 455

A capital user charge rate of 8% has been set by the Government for 2004-05 and represents the opportunity cost of capital invested in the net assets of the National Trust of Australia (WA) used in the provision of outputs. The charge is calculated on the net assets adjusted to take account of exempt assets. Payments are made to the Department of Treasury and Finance on a quarterly basis.

8 Net gain/(loss) on disposal of non-current assets

Loss on Disposal of Non-Current Assets

Motor Vehicles	(9)	4
Property	(275)	(157)
Net gain/(loss)	(284)	(153)

9 Other expenses from ordinary activities

Audit fees	32	15
Workshop/seminar costs	6	8
Motor vehicle expenses	29	30
Sundry expenses	7	11
Subscriptions & membership	0	1
Legal fees	24	13
Minor asset costs	5	14
Doubtful debts expense	2	16
Other expenses	27	40
	132	148

10 User charges and fees

Admissions	78	71
Rental income	202	178
Membership fees	87	105
	367	354

11 Trading profit

Sales	22	26
Cost of Sales:		
Opening inventory	39	55
Purchases	4	2
	43	57
Closing inventory	(35)	(39)
Cost of goods sold	8	18
Trading profit	14	8



THE NATIONAL TRUST OF AUSTRALIA (W.A.)
NOTES TO THE FINANCIAL STATEMENTS
FOR THE YEAR ENDED 30 JUNE 2005



12 Grants & subsidies

Commonwealth Government

Department of Transport and Regional Services	146	0
Department of Family and Community Services	1	0
Environment Australia	78	70
	<u>225</u>	<u>70</u>

Other

City of Albany	0	1
Australia's Open Garden Scheme	0	1
Other grants & subsidies	0	23
	<u>0</u>	<u>25</u>
	<u>225</u>	<u>95</u>

13 Other revenues from ordinary activities

Functions & events	1	2
Donations and legacy	35	204
Other Income	208	143
	<u>244</u>	<u>349</u>

14 Revenues from State Government

Appropriation revenue received during the year:

Service appropriations (i)	<u>1,253</u>	<u>1,093</u>
	1,253	1,093

The following assets have been assumed from/(transferred to) other state government agencies during the financial year:(ii)

Royal George Hotel, East Fremantle	<u>750</u>	<u>0</u>
Total assets assumed	750	0
Ellensbrook homestead	<u>(250)</u>	<u>0</u>
Total assets transferred	(250)	0
	<u>1,753</u>	<u>1,093</u>

- (i) Service appropriations are accrual amounts reflecting the full cost of services delivered. The appropriation revenue comprises a cash component and a receivable (asset). The receivable (holding account) comprises the depreciation expense for the year and any agreed increase in leave liability during the year.



THE NATIONAL TRUST OF AUSTRALIA (W.A.)
NOTES TO THE FINANCIAL STATEMENTS
FOR THE YEAR ENDED 30 JUNE 2005



(ii) Where a liability has been assumed by the Treasurer or other entity, the National Trust of Australia (WA) recognises revenues equivalent to the amount of the liability assumed and an expense relating to the nature of the event or events that initially gave rise to the liability. Note that as from 1 July 2002 non discretionary non-reciprocal transfers of assets/liabilities that are disclosed under these items will be credited directly to Contributed Equity as a consequence of the designation of such transfers as contributions by owners in TI 955. Discretionary transfers of assets between State Government agencies are reported as Assets assumed/(transferred) under Revenues from State Government.

(iii) Where assets or services have been received free of charge or for nominal consideration, the National Trust of Australia (WA) recognises revenues equivalent to the fair value of the assets and/or the fair value of those services that can be reliably determined and which would have been purchased if not donated, and those fair values shall be recognised as assets or expenses, as applicable.

(iii) Commencing with the 2003-04 audit, the Office of the Auditor General will be charging a fee for auditing the accounts, financial statements and performance indicators. The fee for the 2003-04 audit \$30,250 will be due and payable in the 2004-05 financial year.

15 Grants from State Government

State Government

Lotterywest	428	91
Department of Land Information	0	80
Heritage Council of WA	38	0
Peel Development Commission	200	0
Department of Treasury and Finance	0	50
Family & Community Development	0	4
	666	225

16 Restricted cash assets

Appeals funds (i)	235	234
Bonds	12	0
	247	234

(i) The money can only be expended on approved conservation work.

17 Inventories

Inventories held for resale at net realisable value	35	39
	35	39

THE NATIONAL TRUST OF AUSTRALIA (W.A.)
NOTES TO THE FINANCIAL STATEMENTS
FOR THE YEAR ENDED 30 JUNE 2005



18 Receivables

Current

Trade debtors	32	53
Provision for doubtful debts	(2)	(16)
Interest Receivable	8	14
	<u>38</u>	<u>51</u>

19 Amounts receivable for services

Current

421 186

This asset represents the non-cash component of service appropriations. It is restricted in that it can only be used for asset replacement or payment of leave liability.

20 Other assets

Current

Prepayments	26	26
	<u>26</u>	<u>26</u>

21 Plant, equipment and vehicles

Furniture, fixture and fittings

At cost	130	108
Accumulated depreciation	(84)	(64)
	<u>46</u>	<u>44</u>

Plant and office equipment

At cost	375	343
Accumulated depreciation	(180)	(113)
	<u>195</u>	<u>230</u>

Vehicles

At cost	127	127
Accumulated depreciation	(26)	(22)
	<u>101</u>	<u>105</u>

Total Plant, equipment and vehicles

342 379

Reconciliation

Reconciliation of the carrying amounts of Plant, office equipment and vehicles at the beginning and end of the current financial year are set out below.

Plant, equipment and vehicles	Furniture, Fixture and Fittings	Plant and Equipment	Vehicles	Total
- 2005				
Carrying amount at start of year	44	230	105	379
Additions	23	33	114	170
Disposals	0	0	(94)	(94)
Depreciation	(21)	(68)	(24)	(113)
Carrying amount at end of year	<u>46</u>	<u>195</u>	<u>101</u>	<u>342</u>



THE NATIONAL TRUST OF AUSTRALIA (W.A.)
NOTES TO THE FINANCIAL STATEMENTS
FOR THE YEAR ENDED 30 JUNE 2005



22 Land, buildings, exhibitions and artefacts

Freehold land		
At fair value (i)	16,936	14,482
	<u>16,936</u>	<u>14,482</u>
Buildings		
At fair value (i)	7,177	6,529
Accumulated depreciation	(69)	(63)
	<u>7,108</u>	<u>6,466</u>
Artefacts	1,876	1,864
At market value	<u>1,876</u>	<u>1,864</u>
Exhibitions		
At cost	709	415
Accumulated depreciation	(73)	(22)
	<u>636</u>	<u>393</u>
Total Land, buildings, artifacts and exhibitions	<u>26,556</u>	<u>23,205</u>

Reconciliation

Reconciliation of the carrying amounts of land, buildings, exhibitions and artefacts at the beginning and end of the current and previous financial year are set out below.

Land, buildings, exhibitions and artefacts	<u>Freehold</u> <u>land</u>	<u>Buildings</u>	<u>Artefacts</u>	<u>Exhibitions</u>	<u>Total</u>
- 2005					
Carrying amount at start of year	14,482	6,465	1,864	393	23,204
Additions	1,420	325	12	294	2,051
Revaluation increments/(decrements)	1,335	392	0	0	1,727
Depreciation expense	0	(69)	0	(51)	(120)
Disposals	(301)	(5)	0	0	(306)
Carrying amount at end of year	<u>16,936</u>	<u>7,108</u>	<u>1,876</u>	<u>636</u>	<u>26,556</u>

(i) The revaluation of freehold land, land improvements and buildings was performed in June 2004 in accordance with an independent valuation by the Valuer General's Office as a result of the initial application of AASB 1041 (AAS 38). Fair value has been determined on a combination of the basis of current market buying values and current use values. The valuation was made in accordance with a regular policy of annual revaluation.

23 Payables

Current		
Trade payables	270	75
PAYG and GST payable	44	6
	<u>314</u>	<u>81</u>

THE NATIONAL TRUST OF AUSTRALIA (W.A.)
NOTES TO THE FINANCIAL STATEMENTS
FOR THE YEAR ENDED 30 JUNE 2005



24 Non Interest Bearing Borrowings

Current

Loan – Department of Housing & Works

0	10
0	10

25 Provisions

Current

Annual leave

108 90

Long service leave

14 18

Other – salary contribution

5 1

Other – on-costs (i)

16 2

143	111
-----	-----

Non-current

Long service leave

95 82

Other - on-costs (i)

7 9

102	94
-----	----

(i) The settlement of annual and long service leave liabilities gives rise to the payment of employment on-costs including superannuation and workers compensation premiums. The liability for such on-costs is included here. The associated expense is included under Other related expenses (under Employee expenses) at Note 2.

Employee Benefit Liabilities

The aggregate employee entitlement liability recognised and included in the financial statements is as follows:

Provision for employee benefits:

Current

170 111

Non-current

75 94

245	205
-----	-----

26 Other liabilities

Current

Accrued expenses

33 55

Accrued salaries

0 15

33	70
----	----

27 Equity

Contributed equity

Opening balance

1,197 725

Capital contributions (i)

339 356

Contribution by owners (ii)

0 116

1,536	1,197
-------	-------



THE NATIONAL TRUST OF AUSTRALIA (W.A.)
NOTES TO THE FINANCIAL STATEMENTS
FOR THE YEAR ENDED 30 JUNE 2005



(i) Capital contributions have been designated as contributions by owners and are credited directly to equity in the Statement of Financial Position.

(ii) Assumption of superannuation liability by the Treasurer (refer Notes 1(p) and 25).

Reserves

Collection Acquisition Fund

Opening Balance	25	25
Sale of collections	1	0
Purchase collections	(10)	0
Closing Balance	16	25

Stewardship Endowment

93	93
----	----

Asset revaluation reserve (i):

Opening balance	15,159	13,835
Net revaluation increments:		
Land	1,335	1,024
Buildings	392	300
	16,886	15,159
Total Reserves	16,995	15,277

(i) The asset revaluation reserve is used to record increments and decrements on the revaluation of non-current assets, as described in accounting policy Note 1(h).

Accumulated surplus/(deficiency)

Opening balance	11,371	13,165
Change in net assets	(647)	(1,794)
Closing Balance	10,724	11,371

28 Notes to the Statement of Cash Flows

(a) Reconciliation of cash

Cash at the end of the financial year as shown in the Statement of Cash Flows is reconciled to the related items in the Statement of Financial Position as follows:

Cash assets	2,182	4,091
Restricted cash assets (refer to Note 16)	247	234
	2,429	4,325

(b) Reconciliation of net cost of services to net cash flows used in operating activities.

Net cost of services	(3,066)	(3,112)
----------------------	---------	---------

Non-cash items:



THE NATIONAL TRUST OF AUSTRALIA (W.A.)
NOTES TO THE FINANCIAL STATEMENTS
FOR THE YEAR ENDED 30 JUNE 2005



Depreciation expense	232	229
Adjustment for other non-cash items	(77)	110
Net (Gain)/loss on sale of property, plant and equipment	(67)	153
Trading (Profit)/loss	(14)	(8)
<u>(Increase)/decrease in assets:</u>		
Current receivables	27	164
Current inventories	4	16
Other current assets	0	(6)
<u>Increase/(decrease) in liabilities:</u>		
Current payable	233	(153)
Current provisions	60	(9)
Non-current provisions	(19)	(83)
Other Current Liabilities	(37)	(164)
Net GST receipts/(payments)	25	(29)
Net cash provided by/(used in) operating activities	<u>(2,699)</u>	<u>(2,892)</u>

29 Commitments for expenditure

(a) Capital expenditure commitments

Capital expenditure commitments, being contracted capital expenditure additional to the amounts reported in the financial statements, are payable as follows:

Within 1 year	917	398
Later than 1 year and not later than 5 years	0	0
Later than 5 years	0	0
	<u>917</u>	<u>398</u>

The capital commitments include amounts for:

Conservation and Interpretation	<u>917</u>	<u>398</u>
---------------------------------	------------	------------

(b) Lease commitments

Commitments in relation to leases contracted for at the reporting date but not recognised as liabilities, payable as follows:

Within 1 year	14	16
Later than 1 year and not later than 5 years	7	20
Later than 5 years	0	0
	<u>21</u>	<u>36</u>

Representing:

Non-cancellable operating leases	<u>0</u>	<u>36</u>
	<u>21</u>	<u>36</u>



THE NATIONAL TRUST OF AUSTRALIA (W.A.)
NOTES TO THE FINANCIAL STATEMENTS
FOR THE YEAR ENDED 30 JUNE 2005



30 Contingent liabilities

In addition to the liabilities incorporated in the financial statements, the National Trust of Australia (WA) has the following contingent liabilities:

- a) **Native title claims**
 Native title claims have been made on National Trust of Australia (WA) land but as yet no claims have been determined by the National Native Title Tribunal. It is not practicable to estimate the potential financial effect of these claims at this point in time.

31 Events occurring after reporting date

No events have occurred after reporting date, which would cause the financial statements to be misleading in the absence of disclosure.

32 Explanatory statement

(i) Significant variations between estimates and actual results for the financial year

Details and reasons for significant variations between estimates and actual results are detailed below.

	2005 Actual	2005 Estimates	Variance \$000	Variance %
Expenses				
Supplies and services (a)	1,091	2,731	(1,640)	(60)
Depreciation (b)	232	261	(29)	(11)
Administration Expenses (c)	353	53	300	566
Carrying amount of disposal of non-current assets (d)	151	0	151	100
Revenue				
User charges and fees (e)	367	105	262	250
Grants & subsidies (f)	225	1,623	(1,398)	(86)
Other revenue from ordinary activities (g)	244	727	(483)	(66)
Trading profit (h)	14	0	14	100
Proceeds from disposal of non-current assets (i)	218	0	218	100

Section 42 of the Financial Administration and Audit Act requires statutory authorities to prepare annual budget estimates. Treasurer's Instruction 945 requires an explanation of significant variations between these estimates and actual results. Significant variations (considered to be those greater than \$10,000 where exceeding 10% of the estimate) were:

- a) **Supplies and services**
 Delays in project works during 2004-05 has resulted in an under spending in this area. This under spending and carryover of funds to the 2005-06 year was unforeseen when the estimates were prepared.
- b) **Depreciation**
 The variance is due to less project work carried out during 2004-05 than expected. This resulted in a decrease in capitalization of cost and a decrease in depreciation costs compared to estimates.
- c) **Administration expenses**



THE NATIONAL TRUST OF AUSTRALIA (W.A.)
NOTES TO THE FINANCIAL STATEMENTS
FOR THE YEAR ENDED 30 JUNE 2005



When the estimates were formulated expenditure for items such as printing, photocopying and telephones was included in supplies and services. Actual expenditure is included as administration costs.

d) Carrying amount of non-current assets

At the time the estimates were formulated, no disposal of non-current assets was expected.

e) User Charges and Fees

When the estimates were formulated, only membership fees were included as fees and charges. Other income from rent and general admissions was included as other income. The actual figure includes all membership fees, rental and general admissions income.

f) Grants and subsidies

The grants and subsidies received by the National Trust of Australia (WA) are dependent on the availability of such grants and on the projects being undertaken. In 2004-05 grant funding from government was less than what was expected at the time the estimates were formulated.

g) Other revenue from ordinary activities

When the estimates were formulated income from rent and general admissions was included as other income. However the actual income from rent and admissions was recorded as user charges and fees.

h) Trading Profit

At the time the estimates were formulated, no trading profit or loss was expected.

i) Proceeds from disposal of non-current assets

At the time the estimates were formulated, no sale of non-current assets was expected.



THE NATIONAL TRUST OF AUSTRALIA (W.A.)
NOTES TO THE FINANCIAL STATEMENTS
FOR THE YEAR ENDED 30 JUNE 2005



(ii) Significant variations between actual revenues and expenditures for the financial year and revenues and expenditures for the immediately preceding financial year

Details and reasons for significant variations between actual results with the corresponding items of the preceding year are detailed below.

	2005 \$000	2004 \$000	Variance \$000	Variance %
Expenses				
Supplies and services (a)	1,091	990	101	10
Administration (b)	353	309	44	14
Accommodation expenses (c)	289	344	(55)	(16)
Costs of disposal of non-current assets (d)	151	365	(213)	(58)
Other costs from ordinary activities (e)	130	148	(18)	(12)
Revenue				
Grants from state government (f)	1,253	1,093	160	15
Grants & subsidies(g)	225	95	130	137
Interest (h)	182	279	(97)	(35)
Other revenues from ordinary activities (i)	244	349	(105)	(30)
Assumed assets (j)	750	0	750	100

All expenditures have been increased as a result of the receipt of increased grants, contributions and output appropriations for conservation and interpretation projects.

Significant variations (considered to be those greater than \$10,000 where exceeding 10% of the preceding year's figure) were:

- a) **Supplies and services**
 Increase in expenditure is due to an increase in contractors used on projects and conservation works, mainly in the Golden Pipeline project.
- b) **Administration**
 The variance is due an increase in expenditure in 2004-05 for staff training and development, purchase of minor equipment and consumables, compared to 2003-04.
- c) **Accommodation expenses**
 This variance is due to a decrease in property repairs and gardening costs.
- d) **Costs of disposal of non-current assets**
 The variance is due to the transfer of the land value of the Ellensbrook homestead from the National Trust to the Department of Conservation and Land Management by the Valuer Generals Office.
- e) **Other costs from ordinary activities**
 A general improvement in the apportionment of miscellaneous costs to appropriate expenditure categories in 2004-05 compared with 2003-04 has resulted in a decrease in other costs.
- f) **Grants from state government**
 Funds from government grants vary significantly from year to year depending upon the state government budget process and the availability of government funds. In 2004-05 grants funding from government was greater than in the 2003-04 financial year.



THE NATIONAL TRUST OF AUSTRALIA (W.A.)
NOTES TO THE FINANCIAL STATEMENTS
FOR THE YEAR ENDED 30 JUNE 2005



g) Grants and subsidies

The grants and subsidies received by the National Trust of Australia (WA) are dependent on the availability of such grants and on the projects being undertaken. The amount received will therefore vary from year to year.

h) Interest

The decrease in income from interest is due to fewer funds available to invest in interest bearing term deposits.

i) Other revenues from ordinary activities

The variance is due mainly to the improvement in of the apportionment of general income to appropriate income categories and a decrease in sponsorship income.

j) Assumed assets

The Royal George Hotel at East Fremantle was transferred to the National Trust from the Main Roads Department in 2004-05. There were no assets assumed from other government agencies in 2003-04.

33 Financial Instruments

(a) Interest Rate Risk Exposure

The following table details the National Trust of Australia (WA)'s exposure to interest rate risk as at the reporting date:

2005	<u>Weight Average Effective Interest Rate</u> %	<u>Variable Interest Rate</u> \$000	<u>Non-Interest Bearing</u> \$000	<u>Total</u> \$000
Financial Assets				
Cash assets	5.4%	2,182	0	2,182
Restricted cash assets	5.4%	247	0	247
Receivables		0	38	38
		2,529	38	2,567
Financial Liabilities				
Payables		0	314	314
Provisions		0	245	245
		0	559	559
2004				
Financial assets	5.4%	4,325	118	4,443
Financial liabilities		0	381	381

(b) Credit Risk Exposure

The carrying amounts of financial assets recorded in the financial statements, net of any provisions for losses, represents the National Trust of Australia (WA)'s maximum exposure to credit risk without taking account of the value of any collateral or other security obtained.



THE NATIONAL TRUST OF AUSTRALIA (W.A.)
NOTES TO THE FINANCIAL STATEMENTS
FOR THE YEAR ENDED 30 JUNE 2005



(c) Net Fair Values

The carrying amount of financial assets and financial liabilities recorded in the financial statements are not materially different from their net fair values, determined in accordance with the accounting policies disclosed in note 1 to the financial statements.

34 Remuneration of Members of the National Trust of Australia (WA) and Senior Officers

Remuneration of Members of the Accountable Authority

No remuneration was payable to members of the National Trust of Australia (WA).

\$		
0 - 10,000	9	8

Remuneration of Senior Officers

The number of Senior Officers other than the members of the National Trust of Australia (WA), whose total of fees, salaries, superannuation and other benefits for the financial year, fall within the following bands are:

\$		
20,001 - 30,000	0	1
60,001 - 70,000	0	1
70,001 - 80,000	0	0
80,001 - 90,000	0	2
90,001 - 100,000	3	2
100,001 - 110,000	2	0
140,001 - 150,000	1	1

The total remuneration of the senior officer is: 647 592

The superannuation included here represents the superannuation expense incurred by the National Trust of Australia (WA) in respect of Senior Officers other than senior officers reported as members of the National Trust of Australia (WA).

No senior officers are member of the pension scheme.

35 Remuneration of Auditors

Remuneration to the Auditor General for the financial year is as follows:

Auditing the accounts, financial statements and performance indicators.	30	0
---	----	---



THE NATIONAL TRUST OF AUSTRALIA (W.A.)
NOTES TO THE FINANCIAL STATEMENTS
FOR THE YEAR ENDED 30 JUNE 2005



36 Trust Accounts

Ernest Hodgkin Trust Fund - Private Trust Account

The purpose of the trust account is to hold funds for Estuary and Research and Education. The Trust was established during the 1998/1999 financial year.

Opening balance	100	123
Receipts:	114	6
Payments:	180	(29)
Closing balance	34	100

37 Supplementary Information

Write Off's

Public property written off during the financial year	1	0
Amount recovered	0	0
	1	0

38 Impact of Adopting Australian Equivalents to IFRS

The impact on the National Trust of Australia (WA) adopting AIFRS including the key differences in accounting policies

Reconciliation of total equity as presented under previous AGAAP to that under AIFRS:

	30 June 2005 \$000	1 July 2004 \$000
Total equity under previous AGAAP	29,125	27,845
Adjustment to accumulated surplus/(deficiency):		
Recognition of selling costs of assets held for sale (i)	(56)	(30)
Write-down of non-current assets available for sale (ii)	(940)	(496)
Recognise value of assets held for sale as current assets	940	496
Total equity under AIFRS	29,069	27,815

The adjustments are explained as follows:

(i) Selling costs incurred on the disposal of assets held for sale are included under AIFRS.

(ii) AASB 5 requires non-current assets available for sale to be disclosed as a separate class of asset on the balance sheet. Assets classified as non-current assets available for sale are not



THE NATIONAL TRUST OF AUSTRALIA (W.A.)
NOTES TO THE FINANCIAL STATEMENTS
FOR THE YEAR ENDED 30 JUNE 2005



depreciated and are measured at the lower of carrying amount (prior) to reclassification and fair value less selling costs.

Reconciliation of surplus/(deficit) for the period as presented under previous AGAAP to that under AIFRS:

	<u>30 June 2005 \$000</u>
Surplus/(deficit) for the period under previous AGAAP	29,125
Recognition of selling costs of assets held for sale	(56)
Surplus/(deficit) for the period under AIFRS	<u>29,069</u>

Management have determined the quantitative impacts using their best estimates available at the time of preparing the 30 June 2005 financial statements. These amounts may change in circumstances where the Accounting Standards and/or interpretations applicable to the first AIFRS financial statements are amended or revised.





AUDITOR GENERAL

INDEPENDENT AUDIT OPINION

To the Parliament of Western Australia

THE NATIONAL TRUST OF AUSTRALIA (W.A.) PERFORMANCE INDICATORS FOR THE YEAR ENDED 30 JUNE 2005

Audit Opinion

In my opinion, the key effectiveness and efficiency performance indicators of The National Trust of Australia (W.A.) are relevant and appropriate to help users assess the Council's performance and fairly represent the indicated performance for the year ended 30 June 2005.

Scope

The Council's Role

The Council is responsible for developing and maintaining proper records and systems for preparing performance indicators.

The performance indicators consist of key indicators of effectiveness and efficiency.

Summary of my Role

As required by the Financial Administration and Audit Act 1985, I have independently audited the performance indicators to express an opinion on them. This was done by looking at a sample of the evidence.

An audit does not guarantee that every amount and disclosure in the performance indicators is error free, nor does it examine all evidence and every transaction. However, my audit procedures should identify errors or omissions significant enough to adversely affect the decisions of users of the performance indicators.

DDR PEARSON
AUDITOR GENERAL
28 October 2005



CERTIFICATION OF PERFORMANCE INDICATORS

We hereby certify that the performance indicators are based on proper records, are relevant and appropriate for assisting users to assess The National Trust of Australia (WA)'s performance, and fairly represent the performance of the National Trust of Australia (WA) for the financial year ended 30 June, 2004

Dr Jenny Gregory
President
10 August 2005

Prof David Dolan
Chairman
10 August 2005

Mr Pasquo Cirillo
Principal Accounting Officer
10 August 2005





OUTCOME: Conservation of Western Australia's cultural and natural heritage

To conserve Western Australia's unique cultural and natural heritage and encourage and educate the community about the use of those assets for the long term social, economic and environmental benefits of the public.

Effectiveness Indicators

Percentage of properties with management plans (Conservation, Interpretation or Business) in place and properties open to the public.

The National Trust of Australia (WA) has set as its objective, that each property open to the public will have a conservation plan, a business plan and an interpretation plan in place to guide its program operations. Together these plans will ensure the sustained conservation of heritage properties under Trust control. The Council of the National Trust of Australia (WA) has approved a staged process of implementation consistent with available resources. Priority of implementation has been conservation plans, interpretation plans, then business plans.

The National Trust of Australia (WA) actively promotes the development of conservation, interpretation and business plans in support of heritage outcomes and facilitates conservation appeals in support of approved works. Examination indicated however that no consistent policy, reporting mechanism or agreed standard existed within current legislation or regulation at any level of government in Western Australia. At this time it is therefore not possible within assigned resources or mandate for the National Trust to undertake reporting of this nature. Should legislation or regulation make such information available the National Trust would consider reformulation of this performance indicator.

Business plans are interpreted as specific plans, management studies, leases or operating agreements developed or in place to provide a sustained income stream. Co-located properties with adjoining titles are treated as one entity (Greenough Hamlet, East Perth Cemeteries, Wonnerup House).

Percentage of properties with management plans (Conservation Interpretation or Business) in place and properties open to the public.

	2002/03 Actual	2003/04 Actual	2004/05 Actual	2004/05 Estimate
Properties	36	40	42	40
Properties with Conservation Plans	100%	100%	86%	95%
Properties With Interpretation Plans	25%	30%	29%	31%
Properties with Business Plans/ Leases	47%	53%	55%	47%
Properties open to the public	N/A	N/A	69%	73%





Reasons for significant variations 2004-05 actual compared with 2004-05 estimates.

Properties with conservation plans:

A 9% variance between estimate and actual for the 2004-05 year is due to the addition of new properties which do not have a conservation plan in place.

Properties with a business plans/leases:

Work in the area of completing business plans and leases are continuing. Consequently there is an increase in this area.

Efficiency Indicators

The National Trust of Australia raises awareness of the public to the places and objects of National, State and Local heritage significance through its education program and the properties it holds open to the public. The initial point of contact for increased heritage education and awareness is a visit to a National Trust property. The Trust seeks both to increase visitor numbers and to increase the resources available for education and awareness purposes.

The National Trust seeks to increase the funding which is made available for conservation of properties, education and awareness purposes. This provides new visitor experiences, enhanced curricula opportunities and a greater awareness and appreciation of heritage and heritage issues. Expenditures are regarded as an investment in heritage conservation, education and awareness.

	2002/03 Actual	2003/04 Actual	2004/05 Actual	2004/05 Estimate
Adult Visitors	15,003	14,451	12,483	16,000
Pensioner Visitors	5,898	5,441	5,763	6,000
Family Visitors – Adults	1,785	3,362	4,650	7,000
Children	992	1,307	734	2,000
School Groups	2,354	1,678	2,667	4,000
Trust Members	1,709	1,156	1,008	1,000
Boat / Coach Tours	-	2,282	4,926	4,000
Concerts/Performances	7,700	4,890	4,351	5,000
TOTAL VISITORS	41,788	34,567	36,582	45,000

Visitor numbers continue to reflect changing heritage tourism patterns, the impact of competing attractions and the draw of new projects. Under a range of lease arrangements, attendance figures previously reported for some properties are no longer available.



THE NATIONAL TRUST OF AUSTRALIA (WA)
 PERFORMANCE INDICATORS
 FOR THE YEAR ENDED 30 JUNE 2005



The following table reflects the average cost per place and the average cost per visitor to places.

	2002/03 Actual	2003/04 Actual	2004/05 Actual	2004/05 Estimate
Cost of Service	\$6,215,000	\$4,409,000	\$4,316,000	\$5,505,000
Total Visitors	41,788	34,567	36,582	45,000
Average cost per visitor to places Cost / Visitor	\$149	\$128	\$118	\$122
Number of places managed that are under the control of the National Trust	36	40	42	40
Average operating cost per place	\$173,000	\$110,000	\$103,000	\$138,000

Reasons for significant variations 2004-05 actual compared with 2004-05 estimates.

Total visitors:

The opening of the number 1 pump station at Mundaring Weir was opened in November 2004, which was later than expected. At the time the estimate was prepared it was also not possible to predict accurately the number of visitors that would view the project in future.

Average cost per visitor to places:

The increase in the actual average cost per visitor to places compared to estimate is a reflection of the overall decrease in total visitor.

Average operating cost per place:

The decrease in this area relates directly to the decrease of the actual cost of service compared to estimate.



NATIONAL TRUST OF AUSTRALIA (WA)

ANNUAL REPORT - APPENDIX 1
FOR THE YEAR ENDED 30 JUNE 2005



PROPERTIES AND HERITAGE PLACES OWNED, VESTED, LEASED OR MANAGED BY THE NATIONAL TRUST OF AUSTRALIA (WA)

PROPERTY / HERITAGE PLACE	OWNED	MANAGEMENT ORDER (Vesting Order)	OPEN TO PUBLIC
• Aboriginal Fish Traps, Oyster Harbour, Albany		Yes	Yes from viewing trail
• Old Farm Strawberry Hill	Yes - Part	Yes - Part	Yes / Entry fees apply
• Ellensbrook	Yes		Yes / Entry fees apply
• Tranby		Yes	Yes / Entry fees apply
• Grindon Land – Boyup Brook	Yes		No public access
• Bridgedale	Yes		Yes / Entry fees apply
• Wonnerup House	Yes		Yes / Entry fees apply
• Old School, Wonnerup		Yes	Yes / Entry fees apply
• Warden Finnerty's Residence	Crown Lease - Part	Yes - Part	Yes / Entry fees apply
• Moir Homestead		Yes – joint	Yes
• Israelite Bay Telegraph Station		Yes - joint	Yes
• Artillery Drill Hall , Fremantle		Yes	Managed as a commercial venue – Other access by appointment
• The Hermitage, Geraldton		Yes	Currently leased

NATIONAL TRUST OF AUSTRALIA (WA)

ANNUAL REPORT - APPENDIX 1
FOR THE YEAR ENDED 30 JUNE 2005



PROPERTY / HERITAGE PLACE	OWNED	MANAGEMENT ORDER (Vesting Order)	OPEN TO PUBLIC
• Central Greenough (contains 11 building complexes and 9 vacant land parcels)	Yes - Part	Yes - Part	Yes / Entry fees apply
• Stone Barn & Cottage, Greenough	Yes		No public access at present
• Wesley Church	Yes		Yes
• Gray's Store	Yes		Grounds only
• Temperance Lodge	Yes		Yes
• St James' Church	Yes		Grounds only – rehabilitation work in progress
• Part Old Walkaway Cemetery	Yes		Yes
• Dongara Flour Mill	Yes		Grounds only
• Walpole Land	Yes		No
• Old Blythewood	Yes		By appointment / Entry fees apply
• Poole Street Footbridge		Yes	Yes
• Mangowine Homestead	Yes		Yes / Entry fees apply
• Old Observatory		Yes	By appointment
• Old Perth Boys' School		Yes	Managed as a commercial venue – Other access by appointment
• St Bartholomew's Church		Yes	Yes
• East Perth Cemeteries		Yes	Yes / Entry fees apply

NATIONAL TRUST OF AUSTRALIA (WA)

ANNUAL REPORT - APPENDIX 1
FOR THE YEAR ENDED 30 JUNE 2005



PROPERTY / HERITAGE PLACE	OWNED	MANAGEMENT ORDER (Vesting Order)	OPEN TO PUBLIC
• Jarrahdale land, 1949 Mill & Mill Manager's Residence	Yes		Public access land but not house
• Nunn Block, Bridgetown-Greenbushes	Yes		Controlled access
• Settlers Cottage, Herdsman Lake		Yes	Yes / Entry fees apply
• Woodbridge		Yes	Yes / Entry fees apply
• York Courthouse Complex		Yes	Yes / Entry fees apply
• Dedari – No 8 Pumping Station		Yes	By appointment
• No 3 Pumping Station, Cunderdin		Yes - joint	Yes / Entry fees apply
• No 1 Pumping Station, Mundaring		Yes	Yes / Entry by donation
• No 4 Pumping Station, Merredin		Yes – joint	No
• Karalee Rock and Dam		Yes	Yes
• Luisini Winery		Lease	By appointment. Conservation work in progress
• John Curtin's House		Yes	No
• Dedari – cottage (building only)		Yes	Private occupancy
• Royal George Hotel		Yes	Cooperative gallery space
• Pinjarra Courthouse		Yes	No

NATIONAL TRUST OF AUSTRALIA (WA)

ANNUAL REPORT - APPENDIX 2
FOR THE YEAR ENDED 30 JUNE 2005



Publications/resources available from the National Trust of Australia (WA)

Primary School Resources

- ▷ The Old Mill
- ▷ East Perth Cemeteries
- ▷ Hand in Hand – Multicultural Issues
- ▷ Tranby House
- ▷ Government House
- ▷ Woodbridge
- ▷ Herdsman Lake Settler's Cottage
- ▷ Urban Bushland
- ▷ Leighton Battery
- ▷ The Old Observatory
- ▷ Old Perth Boys School
- ▷ "Tour Through Time" Library Book
- ▷ The Golden Pipeline Resources and Activities File
- ▷ The Pipeline O'Connor Built – picture book

Secondary School Resources

- ▷ Investigating Tranby House
- ▷ Investigating East Perth Cemeteries
- ▷ Investigating Herdsman Lake Settler's Cottage
- ▷ Investigating Woodbridge
- ▷ Investigating The Old Mill
- ▷ Investigating Government House
- ▷ Investigating Old Perth Boys School
- ▷ Investigating Old Perth Observatory
- ▷ Restricted Entry – Investigating Chinese Immigration to WA
- ▷ The Golden Pipeline Resources and Activities File
- ▷ The Pipeline CY O'Connor Built – picture book
- ▷ Golden Pipeline Information Sheets

Professional Development Resources

- ▷ Active Citizenship – Celebrating the Centenary of Federation at Parliament House, National Trust and Kings Park
- ▷ The Golden Pipeline Resources and Activities File
- ▷ Golden Pipeline Heritage Trail Guide
- ▷ Golden Pipeline Information Sheets

Posters

- ▷ Tranby House▷ East Perth Cemeteries
- ▷ Woodbridge Herdsman Lake Settler's Cottage
- ▷ The Old Mill The Old Observatory
- ▷ Government House Old Perth Boys School



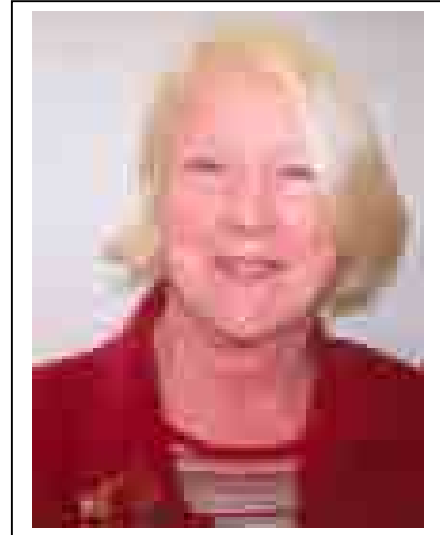
Councillor and Staff Profiles

Mrs Alice Adamson

Trained Nurse

Past State Executive Member
Country Women's Association

Chairperson Country Women's
Association Archive Committee



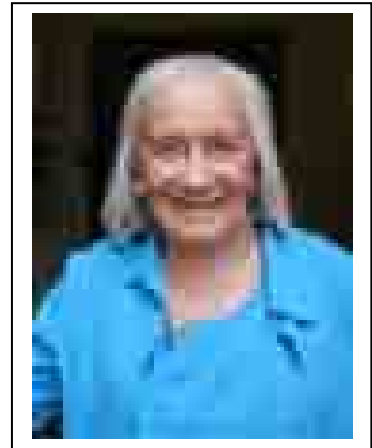
Profile

Alice was nominated to represent the Country Women's Association on the National Trust of Australia (WA) Council on 1989. She has a passion for heritage and collects antique china and furniture.

Alice has been a member of the Country Women's Association for more than 40 years and has become more involved with the association since retiring to Perth.

Mrs Peggy Clarke

Councillor, National Trust of Australia (WA)



Profile

Peggy has actively participated and volunteered for the National Trust (WA) for the last ten years. In addition to her role as Councillor she is a member of the Classification Committee and the House Committee for Tranby House. Peggy is also currently a community member of the Heritage Committee, City of Gosnells and member of the City of Gosnells museum.

Peggy is a heritage enthusiast who enjoys working as a volunteer guide at Tranby House and carrying out research for the Trust. Her recent work includes indexing a collection of plans from the licensing court that relate to trust holdings.

Previous Peggy has worked in the role of attendant at the B Shed, shop attendant at the Ovens, Maritime Museum and guide at the Round House, Fremantle.

Professor David Dolan

Director Research in Cultural Heritage
Curtin University
MA PhD



Profile

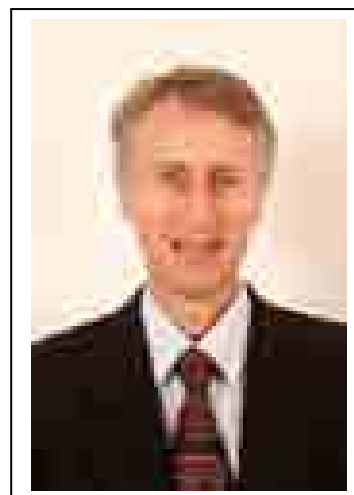
Professor David Dolan has extensive experience in museums and the management of historic places. He arrived in Perth in 1995 to be the first Professor of Cultural Heritage in Western Australia. He has previously worked in prominent roles at the Powerhouse Museum in Sydney; was the Curator of the official residences in the Department of Prime Minister and Cabinet and was the first curator of Lanyon Homestead near Canberra in the early 1980s. He is currently the Director of Research In Cultural Heritage at Curtin University.

Professor Dolan and has been involved with National Trusts in three states for over 20 years in total. He has served on the National Trust (WA) Council for nine years and was appointed Chair of The National Trust of Australia (WA) in July 2001.

Professor Dolan aims to ensure the National Trust in WA enhances its standing as the main manager of historic places open to the public and as a credible advocate for community heritage concerns. He sees the National Trust taking a lead role in public education and awareness of heritage issues in WA as well as setting the example in good heritage practice. He is also looking to develop greater levels of cooperation with other heritage agencies including the Heritage Council of WA, universities and the museum sector.

Professor Ross K. Dowling

Foundation Professor of Tourism
School of Marketing, Tourism & Leisure
Faculty of Business & Law
Edith Cowan University



Profile

Professor Ross Dowling has extensive experience in natural heritage. He is an Executive Board Member of the Indian Ocean Tourism Organisation (IOTO) and a Board Member of Ecotourism Australia. In Western Australia he is Chairperson of The Forum Advocating Cultural and Ecotourism (FACET) and Board Member of the Royal Automobile Club and the Royal Agricultural Society. He has previously been a Foundation Director of the State's Tourism Council. He is also an international speaker and consultant on tourism.

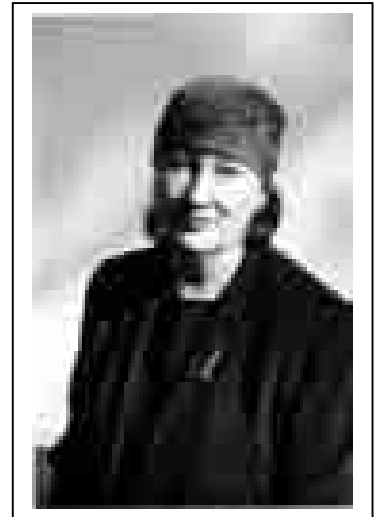
Professor Dowling is a prolific author and researcher with over 200 tourism publications. In recent years he has co-authored or co-edited six books on tourism. They are *Ecotourism*, *Tourism in Destination Communities*, *Natural Area Tourism*, *Ecotourism Policy and Planning*, *Wildlife Tourism* and *Geotourism*. In 2006 he will publish the international global text *Cruise Ship Tourism*.

Dr Dowling has degrees in Geology, Geography and Environmental Science as well as diplomas in Educational Administration, Sport & Recreation, and Teaching. In 1993 he was awarded a PhD in Environmental Science from Murdoch University, for his ecotourism thesis *An Environmentally Based Approach to Tourism Planning*. His model has since been applied in Australia, Canada, Indonesia, Malaysia and the USA.

He has thirty years experience working in the field of the natural and cultural environment and he has been a tour guide in wilderness areas and national parks in many parts of the world including Asia, the Pacific and the Antarctic. For his contributions to the environment he has been awarded a New Zealand Conservation Foundation Citation and a Mobil Environmental Award.

Assoc Prof Jenny Gregory

FRHS, MPHA
BA Hons History
PhD History UWA>
Royal Historical Society
Australian Historical Association
History Council of WA,
Royal WA Historical Society
Oral History Association
ICOMOS



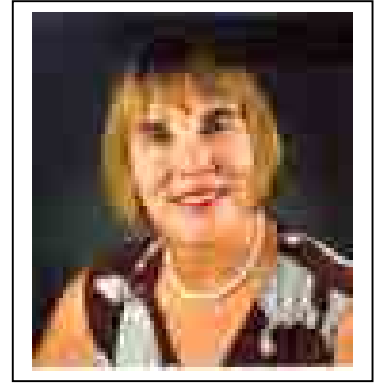
Profile

Jenny Gregory has been President of the National Trust since 1998. She was invited to join the Trust in 1989 and served on its Cultural Environment Committee for some years. She was elected to Council in 1993. Her contribution to the Trust was recognized in 2001 by the award of a Centenary of Federation Medal. She is also President of the History Council of WA. She is Director of UWA Press and the Centre for Western Australian History at The University of Western Australia.

Before moving into publishing about six years ago, she taught Australian history, with a particular focus on urban history, heritage and Western Australia, for many years. Her main academic research interests continue to be urban history and heritage. Author of a number of books, her most recent publication is *City of Light: a history of Perth since the 1950s* (2003). She is currently working on the development of the Historical Encyclopedia of Western Australia as Editor-in-Chief and is looking forward to continuing a project that she began a number of years ago on moved heritage.

**Dr Rosalind Lawe Davies B.A., M.Ed.,
PhD.**

Bachelor of Arts
Master of Education
PhD (University of WA)
Art Deco Society of Western Australia



Profile

Rosalind Lawe Davies was elected to Council in 1998, and currently serves as Secretary to the Executive Council, and as a member of the Trust’s Classification Standing Committee and Art Deco Committee. She is also a member of the management committees for Jarrahdale and Bridgetown.

Born in Perth, her interests in cultural heritage are of long standing. She was a key member of the Art Deco Society of WA in its fight to save the Raffles Hotel, and has served on the committee of that society for more than 15 years. Current research is focused on the 1930s heritage of the South-West, in particular the timber towns and the town of Manjimup. She is the author of articles published in the Trust News and Waltzing Moderne, and a contributor to the forthcoming Historical Encyclopedia of Western Australia.

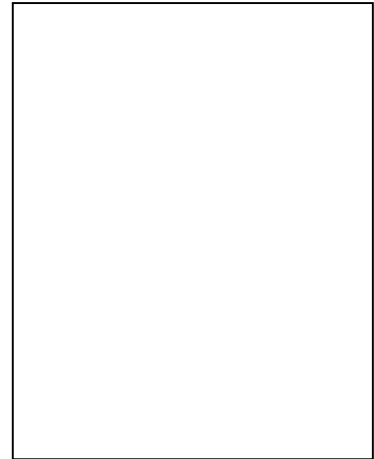
Rosalind also maintains an active interest in natural heritage, and the debates concerning the conservation of both natural and cultural heritage, and the wishes of individual owners.

In the coming year, she plans to present papers to conferences in the USA on the timber towns of WA, and the Art Deco style Kalgoorlie Olympic Pool; a destination for the water delivered by the Golden Pipeline.

NATIONAL TRUST OF AUSTRALIA (WA).....COUNCILLOR

Dr Lenore Layman

BA Hons(UWA) PhD(UWA)
Associate Professor of History,
Murdoch University
Western Australian History
Foundation Secretary
Royal Western Australian Historical
Society Councillor,
History Council of Western Australia
Committee member



Profile

Lenore Layman is the National Trust Councillor nominated by the Royal Western Australian Historical Society and is a historian of Western Australia with particular interest in mining, labour and health histories. She teaches History at Murdoch University and has been active in the area of public history for many years. Some recent publications include the editing of Rica Erickson, *Rica's Stories* (Royal WA Historical Society, Perth, 2001) and chapter on 'Federation and Labour Culture' in Greg Patmore & Mark Hearn (eds) *Federation and Working Life* (Pluto Press, Sydney 2001) and a chapter in the forthcoming history of the Midland Railway Workshops. Current research interests include a history of asbestos in Australia and the history of the East Perth Power Station.

Mr Michal Lewi AM



Profile

Michael Lewi was born in Prague in 1931 and was educated in England, with an MA in English literature from Oxford University. He practised as a solicitor in England and Singapore before the Lewi family emigrated to Perth in 1961 where he has been a legal practitioner for over thirty years.

Michal qualified as a solicitor in England and practised in England, Singapore and Perth (since 1961). He has practised in the fields of commercial, corporate, charities, trusts, taxation and energy law. Michal retired as the senior partner of Jackson McDonald, solicitors, Perth in 1992 and remained in part-time practice as consultant to the firm until 1994.

He is the past Chairman of the National Trust and has been appointed to the Heritage Council as well as being a member of the Management Committee of the Environmental Defender's Office of Western Australia.

His other activities have included being Chairman of the WA Academy of Performing Arts, Convenor of the Francis Burt Law Education Centre, member of the committee of CityVision and committee member of the Environmental Defender's Office of Western Australia. Michal was made Member of the Order of Australia for services to heritage and the environment in 1999. He is a Fellow of the Western Australian Academy of Performing Arts.

NATIONAL TRUST OF AUSTRALIA (WA).....COUNCILLOR

Dr Jamie O'Shea

BSc (Hons) Melbourne University

PhD Melbourne University

Lecturer in Zoology at the UWA.

Member of ANZSCP.

Member of Academic Board, UWA.

Member of Australian Mammal Society.

Past President, Journal Manager and

Council Member of the Royal Society of Western Australia.

Deputy Chair of Animal Ethics Committee, UWA.

Member of Faculty Board, FNAGS, UWA.

Foundation Member of Bat Conservation International.

Member of Australasian Bat Research Society.



Profile

Dr O'Shea is the Royal Society of Western Australia's representative on Council of the National Trust. He is a past President, Journal Manager and Council Executive for the Royal Society. He has joined the Classification Committee of the National Trust. As an academic at UWA, he has research and teaching interests in comparative anatomy, evolutionary biology and conservation issues, particularly the conservation of bats. He has interests in and involvement with a wide range of University governance activities with membership of both the University Academic Board and the Faculty Board of the Faculty of Natural and Agricultural Science.

Dr O'Shea has a long involvement with issues of animal welfare through his position as Deputy Chair of the University's Animal Ethics Committee. The desire to engage in protection of staff and students against the commercialisation of the university education sector, has led him to stand and he was elected to executive positions on the UWA Branch Committee of the National Tertiary Education Union as both its Secretary and as a National Councillor. Through both his professional and non-professional interests, Dr O'Shea maintains his involvement with the protection and care of both the built and natural environment.

Assoc Prof John Stephens

Associate Professor
Bachelor of Architecture (First Class
Honours) Curtin University 1988
Registered Architect No1381 WA -1990
Doctor of Philosophy
(University of Western Australia)1995



Royal Australian Institute of Architects
(RAIA).
National Trust of Australia (WA).
Badan Warisan Malaysia .
Australian History Association.
Australia ICOMOS
History Council of Western Australia.

Profile

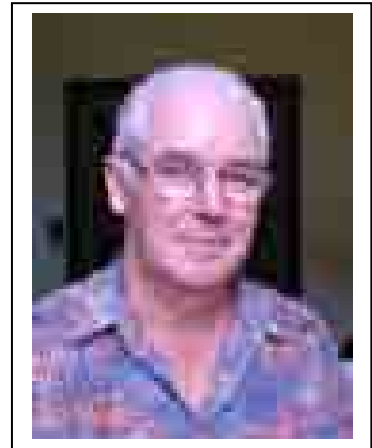
John is the Royal Australian Institute of Architects nomination to the National Trust Council. He is an academic and past head of the Department of Architecture and Interior Architecture at Curtin University.

John is a long time Trust member and received the Stirling Award in 2003. He teaches architectural history, heritage and conservation to architectural students and has been involved in many conservation plans, heritage reports and commissioned research into heritage and history matters.

John is currently chair of the Trust's Classification Standing Committee and the John Curtin House Steering Committee. He is also a member of both the Built Environment Working Committee and the Defence Heritage Committee. In addition John is the Honorary Architect for the Golden Pipeline Project.

Paul Setchell OAM, FCA, MACS, CD

Fellow Institute of Chartered Accountants
Member Australian Computer Society



Profile

Paul Setchell is a chartered accountant with a particular interest in the application of computer systems to the effective processing of financial data.

Originally from England he spent a number of years working in South America and Asia before migrating to Australia.

For many years he ran a consulting business specialising in financial application of computer systems, and advising a range of commercial and semi government organisations.

He retired from active business life in 2003, but remains board members of a large, Perth based Trustee company. He served on State and National Boards of Save the Children Fund for about 20 years and other voluntary posts.

His hobbies include a variety of outdoor activities, music and English language.

Dr Robyn Taylor, MPHA

Certificate in Museum Studies, ECU.
Doctor of Philosophy, School of
Architecture & Fine Arts, UWA.
Graduate Dip. Art & Design, Curtin.
Post-Graduate Certificate in Education,
London University.
Bachelor of Arts, University of New South
Wales (incl Fine Arts, Sydney University)
Member of the Professional Historians
Association (WA)



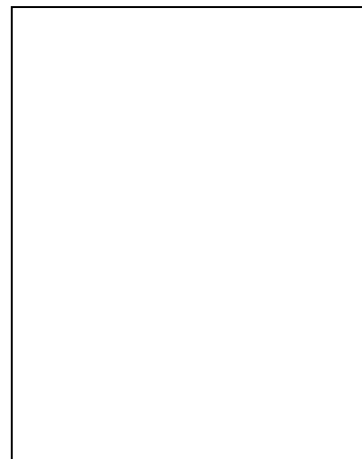
Profile

Dr Robyn Taylor, is a former university lecturer in Fine Arts, who works as a free-lance historian and heritage consultant. Her special area of interest is Western Australian art, architecture and cultural heritage. Dr Taylor's practice involves researching the social and physical history of buildings for heritage assessments and conservation plans. She writes reviews and articles for publication, and curates art exhibitions. She continues a long-term involvement with projects relating to public art. For a number of years she was co-editor of Craftwest magazine, while her research into the history of sculpture, resulted in the Art Gallery of WA's centenary exhibition '100 Years of Western Australian Sculpture 1895-1995'. She now resides in Toodyay and is Vice-President of the Toodyay Historical Society and committee member of the Toodyay Naturalists' Club, and Friends of the River, a group that works for the restoration of the Avon River.

Dr Taylor joined the National Trust (WA) in 1982, and has served as a Councillor since 1993, and Deputy Chair from 2000 to 2003. Prior to her appointment on Council she was a Councillor on the Inaugural Heritage Council of WA from 1991 to 1993. She has been a member of the Classification Standing Committee since 1994, and Chair of the Public Art and Memorials Committee since 1997. With other Councillors, she organized the Trust's public forums on the Regional Forest Agreement (1998) and Health in the Jarrah Forests (2000). In 2004 she received a Champion Award for the Year of the Built Environment.

Mr Nicholas Wells

Bachelor of Commerce, UWA.
Deputy Chairman – National Trust (WA).
Chairman Bushbank Board.
Member – Executive National Trust (WA).
Board Member Royal Perth Hospital.
Medical Research Foundation.



Profile

Nicholas has worked in the property industry for nearly a decade and has had direct involvement in instigating and implementing key inner city and inner urban residential development strategies in Perth, Western Australia. He is currently working as a Marketing and Development Manager in the property industry. In addition he is a regular press commentator on economic and financial matters relating to the property industry and the general economy. He has a broad understanding of the mechanics of property and provides assistance in negotiations where necessary.

Nicholas has been involved with the Trust for 5 years, having been introduced to the organisation by former Councilor Greg Devine. During this time he has moved from the Trust Executive, to Council and is presently the Deputy Chair overseeing Natural Heritage. In addition to this, Nicholas is Chairman of the Bushbank Board, and is the Trust representative on the Board.

The Natural Heritage movement is a significant portion of the Trust's work. Nicholas aims to develop the Trust into the peak body for the conservation and protection of the States natural heritage. His goal in concert with his property, legal and finance colleagues is to eventually achieve sustainable self-funding for the programs which he is currently responsible for. A key strategy is the fostering of strategic partnerships with the business community, which are seeking new ways of meeting the public's expectations of corporate responsibility.

With regard to the overall Trust activities, Nicholas shares a similar vision to the Chairman and looks forward to enhancing the role of the organisation as the States premier manager and advocate of Westerns Australia's historical, cultural and natural heritage.

Ms Shelley Bertola JP

Post-Graduate Diploma Business
(Management), Edith Cowan University.
Justice of the Peace, Murdoch University.
Fellow, Australian Institute of Office
Professionals.
Graduate, Australian Institute of Company
Directors
Royal Western Australian Association
of Justices of the Peace.
CPSU/CSA Workplace Delegate.



Profile

Shelley has worked for the National Trust since early 2001 when she was appointed Administration Officer for Golden Pipeline. She brought to the Trust her extensive experience in management and small business. In late 2002 she was appointed Office Manager and since then has played an active role in the organisation's governance, administration and provision of community services.

Shelley is currently completing a Masters degree in Business Administration (Management), to be completed in 2006.

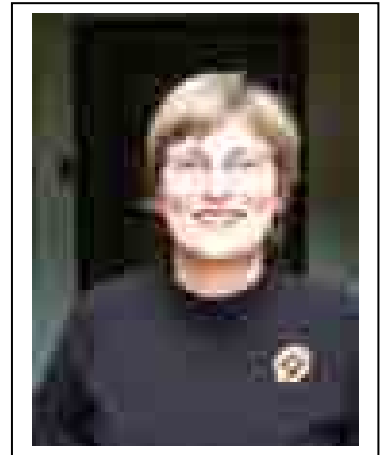
Shelley is Vice President of the Mundaring and Hills Historical Society Inc and been an executive committee member of that organisation for nine years. In 2000 she was awarded the AE Williams short historical essay award by the Royal Western Australian Historical Society for her research into the history of Sacred Heart Church and School, Mundaring titled *A Lesson in Faith* and author of *Centenary of Mundaring* (1998). Some of the community projects she has worked on include:

- *A Patchwork a Memories*: an anthology of stories about women who made a difference in the hills, 2000;
- *Back to Mundaring Day*: centenary of the town of Mundaring, 1998. Nominated for the Shire of Mundaring Community Event of the Year; and
- *Their Story* Exhibition, 2000 Mundaring District Museum, winner of the Shire of Mundaring Event of the Year.

In May, Shelley was a finalist in the Western Australian Office Professional of the Year Awards, and has become a graduate of the Australian Institute of Company Directors.

Ms Anne Brake

Master of Applied History
University of Technology, Sydney, 1994
Graduate Diploma in Museum Studies
University of Sydney, 1987
Bachelor of Arts, Queensland University, 1986
Diploma of Teaching (Primary)
Kelvin Grove College of Advanced
Education, 1979
Museums Australia; ICOMOS
Fremantle History Society; Museum Policy
Reference Group; Adjunct teaching fellow, Curtin University
Register Committee Heritage Council of WA



Profile

After teaching for 7 years moved into the area of museums and heritage. She worked in training and curatorial positions in and around museums in regional NSW and Sydney for 7 years before moving to Western Australia to take up the position of Curator at the Fremantle Prison.

In 2001, after 6½ years at the Prison, Anne moved to the National Trust as the Interpretation Manager for the Golden Pipeline Project. In January 2004 she became Manger of that project.

Anne has been a member of the Heritage Council of Western Australia's Register Committee since 2003 and is currently a member of the State Government's Museum Policy Reference Group.

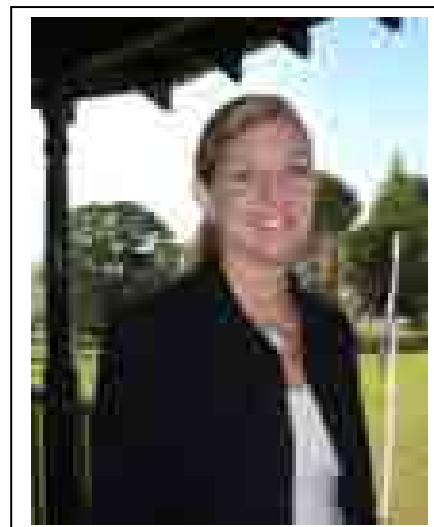
Anne has been involved with Museums Australia (formerly the Museums Association of Australia) since 1988. She has served on the state committees of both organisations in NSW and Western Australia including as Vice President and President.

Anne was an inaugural member of the Fremantle History Society which was formed in 1994. She remains a member of the committee. She has been joint editor of the Society's newsletter for those 10 years and has been joint editor of 4 volumes (the fourth volume to be released in September 2005) of *Fremantle Studies Journal*.

Anne is also currently co-editing a volume of *Western Studies* on convicts in WA.

Miss Skye Cattle, BaC

Bachelor Commerce-Tourism Management and Small Business Management, Curtin University of Technology.



Profile

Skye has worked at The National Trust of Australia (WA) since December 2004. In her role as Accounts Receivable Officer, Finance, her duties include preparing and processing of invoices and property worksheets, banking, insurance and various projects.

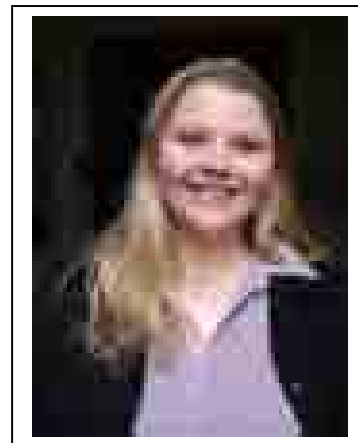
After completing a three year Bachelor Degree in Tourism Management and Small Business Management, Skye worked as a temp for various government agencies before being appointed Accounting Officer, Controls at the Department of Justice for 3 years. During this time, she gained extensive knowledge of Accounting Practices including reconciliation and cash management.

After taking time off overseas travelling, realised she wanted a change and wanted more diversity in her career and has since joined the National Trust.

Having grown up on a farm in the small wheatbelt town of Lake King, south east of Western Australia, Skye has a unique perspective on issues affecting regional Western Australia and has a real sense of for people in remote areas.

Miss Haley Chandler

Certificate IV in Hospitality Supervision, TAFE
Small Business Management, NEIS
Studying Bachelor of Commerce, Curtin
University



Profile

Haley joined the National Trust in May 2003 after working in a management position in a small wholesale business based in the Perth Hills. Her responsibilities included providing a high level of customer service in addition to administrative functions including procurement, accounting, inventory control, sales, and office management. Haley is a self-motivated person with strong skills in customer service, problem solving and reporting.

Haley is currently studying at Curtin University studying for a Bachelor of Commerce and is interested in accounting and business management.

She is an experienced event and function organiser and operates her own home-based business.

Mr Pasquo Cirillo

Bachelor of Business (Accounting),
PNA
Diploma in Accounting
Member of the National Institute
of Accountants



Profile

Pasquo commenced working at the National Trust at the beginning of November 2003. Pasquo was recruited to fill the role of Manager, Finance and Audit and as the Principal Accounting Officer is responsible for the keeping of adequate accounting and financial information systems that will allow confirmation that all National Trust revenues and expenditures are brought to account and for the day to day supervision of the accounting function.

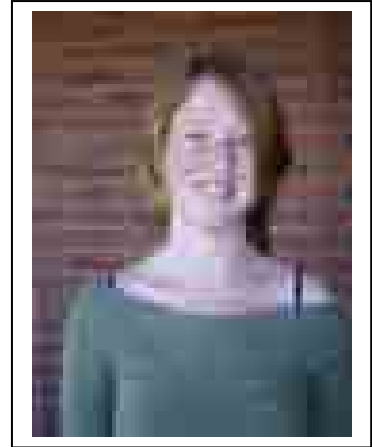
Pasquo has 25 years experience in the finance and accounting area within government agencies. He has held senior finance positions in the Department for Planning and Infrastructure, Department of the Premier and Cabinet, Department of Education Services and the Country High School Hostels Authority.

Pasquo has a wide range of finance and accounting experience which includes preparing budget paper details for inclusion in the Treasury annual budget estimates, preparation of the organisations annual financial statements and dealing with internal and external audit matters.

Over the years Pasquo has provided finance information and advice to management and been part of a number of committees and teams. He also implemented accrual accounting and led the GST implementation team in the Department of the Premier and Cabinet.

Miss Laura Colman

A-level (Art, Biology, English Literature, French)
Computer Literacy and Information
Technology (CLAIT 1)
Young Enterprise Scheme
Journalism: Freelance & feature writing
(TAFE short course)
E-writing and editing workshop(IPAA)
Project management workshop (MAWA)
Adobe Acrobat 6.0 training (ATI-Mirage)
Member of the National Trust of
Australia (WA)



Profile

Laura began working for the National Trust in October 2003 after moving to Australia from the UK. She has previously worked in a number of customer service roles and has strong communication skills and problem-solving abilities.

Her participation in the Young Enterprise Scheme gave Laura a good understanding of small business practices through practical experience. Her role as Managing Director of a company helped to develop her organisational and communication skills.

Laura has also held a number of voluntary positions, which include working as a teacher’s assistant and as a leader of a Rainbow Guides group, which she did over the course of three years.

Her interest in heritage and conservation has led Laura to pursue a career in this field. She currently works in the Natural Heritage Department, providing administrative support for the Covenanting and BushBank programs.

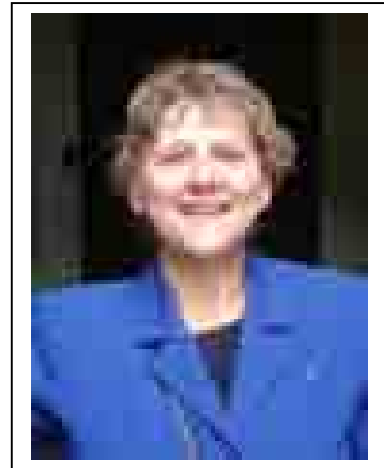
Laura particularly enjoys the journalistic aspect of her job and she has contributed a number of articles to Trust News. She was coordinator of *The Gumleaf*, a National Trust volunteer newsletter till July 2005.

Laura has good IT skills and has assisted in the development of the Natural Heritage website and other promotional material.

Laura’s interests include travel, reading, writing and art.

Mrs Diana Frylinck

Bachelor of Journalism
BA Hons Political Studies (African)
Grad Diploma Secondary Education



Profile

Diana worked as a newspaper reporter in Southern Africa before coming to Australia in 1988 where she trained as a teacher. She decided against going into schools, instead juggling part time jobs and being a volunteer in environmental education for the Department of Conservation and Land Management. She tutored at Murdoch in the education department, worked as a publicity officer for the Centre of Water Research and as an education officer for the Water Corporation at Mundaring Weir.

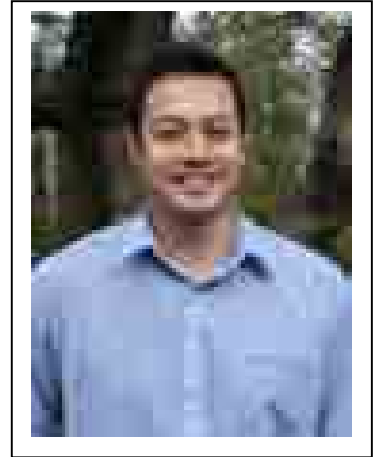
Diana's duties at Mundaring Weir grew to include running the CY O'Connor Museum and when The National Trust of Australia (WA) took it over in 2000 she came over to the Trust too. Her title at the Trust is Interpretation Officer for the Golden Pipeline and Diana's duties include research and writing. She also conducts tours and workshops for school and other groups at No 1 Pump Station, Mundaring Weir. She opens No 1 to the general public on Sundays and public holidays on a volunteer basis for the Trust.

Diana's hopes for the future include completing a Graduate Diploma in Applied Heritage Studies at Curtin University.

NATIONAL TRUST OF AUSTRALIA (WA).....PERSONNEL

Mr John Kirk

Diploma of Business, Central TAFE

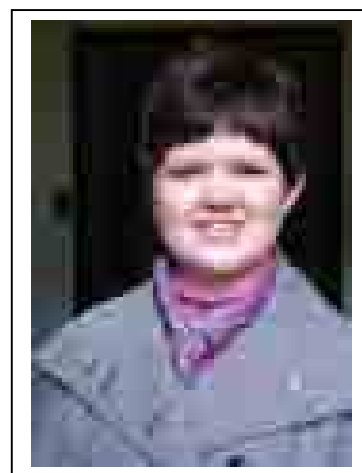


Profile

Transferred to the National Trust from the Curriculum Council in April 2002 in the area of Finance and Payroll. Currently working in the Finance Branch at the Trust specifically dealing with payroll and expenditure. Interests outside of work include Golf, Gym, and Martial Arts. Hoping to one day study French and embark on further travel.

Miss Zoe Lawrence

Certificate in Office Practices
Associate Diploma – Library and
Information Services
Member of National Trust of
Australia (WA)



Profile

Zoe has been working with the National Trust for the past nine years, initially joining the Trust Staff to run the Library then becoming involved with customer service and membership in Reception. Zoe assists in organising Trust Member Events and over the years has had the opportunity to interact with Members, Volunteers and Councilors.

Zoe's former work experience has included working for the Boating Industry Association, where she had the opportunity to help organise Boat Shows, to practicing Record Management, Media and Library skills in other working environments.

Zoe has formed a great interest in heritage through the work at the National Trust and enjoys the opportunity of visiting international properties as well as local sites.

Zoe's other interests include, studying languages, home craft and interior decorating.

Ms Joy Lefroy

Certificate of Education
(Falmer, Sussex, England)
Bachelor of Education
(Edith Cowan University)
A and B class driving license



2001to 04 Board member, Treasurer and Chair,
Western Australian State Literature Centre
2003/4 WA Curriculum Council History
Review and Planning Committee
1995/6 WA National Profiles Development Project,
English curriculum, Linking WA to the National Curriculum

Profile

Joy has been involved with education since early 1970s. Positions have included teaching in school classrooms, remedial centres, gifted and talented centres, state and private alternative schools, Fremantle Children’s Literature Centre, TAFE, Edith Cowan University. Joy also runs her own business helping parents understand why it’s so important to encourage reading in the home.

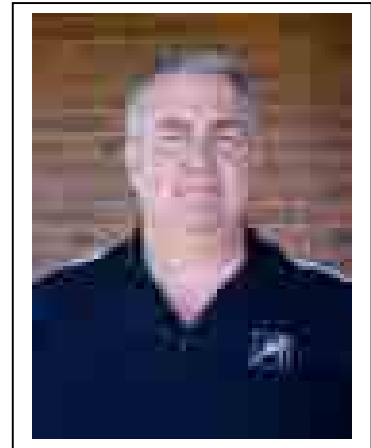
Joy began working with the Trust in February 2002 as education officer with the Golden Pipeline. In March 2004, she moved to the position of education coordinator for the National Trust WA. In this position she liaises with all departments. In 2003 Diana Frylinck and Joy published a children’s picture book with Fremantle Arts Centre Press called The Pipeline CY O’Connor Built. The book received a Notable Book in the Children’s Book of the Year Award 2004.

Other publications since 1990 include articles for education magazines, teacher’s notes for published books and courses for teachers. She has been a judged for many student competitions including Nestle, Tim Winton Award and Tournament of Minds. She has worked in an advisory capacity with education planning committees. She accompanied her partner on a Churchill Fellowship to study education in museums in America, Canada, UK and Sweden in 2000.

In her spare time Joy is a printmaker and pursues many other interests in the Arts.

Mr Robert B Mitchell CD, CPSM, UE

BA (Hons) History, Royal Military College
MA (War Studies/International Relations)
Kings College, London School of Economics
Canadian Land Forces Staff College
Canadian Forces Staff College
Graduate, Australian Institute of
Company Directors
Fellow, Canadian Institute of International
Peace and Security
Associate Fellow, Australian Institute of
Management
Chair, MA Special Interest Group, Friends and Volunteers
Chair, Rottnest Island Cultural Heritage Advisory Committee



Profile

After graduation, Colonel Mitchell served for 20 years in the Canadian Forces on NATO and United Nations duties retiring in 1990 in the rank of Colonel. Heritage duties included service as Director of Army Museums, comprising 57 collections and venues managed by volunteers.

Volunteer duties with the National Trust have included Tranby (1991 - 2002), Old Perth Boys School (1991 -1996) and the Defence Heritage Committee (1993 - present) all of which included 3 year terms as Chair. First elected to Council in 1992, Robert served as Hon. Secretary (1993 - 95), Deputy Chairman (1995 - 96) and Vice President (1997 -2000).

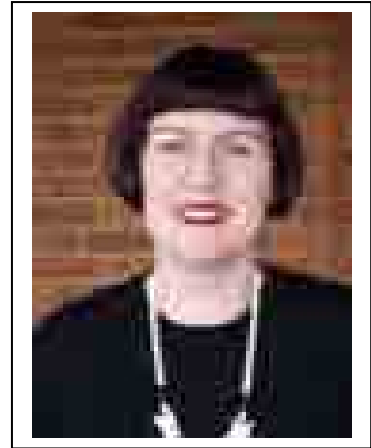
Since joining the Trust, he has pursued heritage interests with further courses of study at James Cook University and the Australian War Memorial and regularly acts as a volunteer guide at Tranby House, Rottnest Island and the Leighton Battery at Buckland Hill.

After serving as Grants Administrator at Healthway (WA Health Promotion Foundation) and Executive Officer of the RSL War Veteran's Homes, Robert joined the Trust staff in 2000 as Manager Membership and Volunteer Services. Current responsibilities include corporate, heritage and community services.

Other active interests include the Royal United Services Institute, Scouts Australia, the Returned and Services League, History Council of Western Australia and Museums Australia.

Ms Sarah Murphy

Master of Letters (Museum Studies)
Graduate Diploma in Museum Studies,
Victoria College
Bachelor of Arts, University of Western
Australia (double major Anthropology &
Prehistory)
Museums Australia, ICOM, Australian
Registrar's Committee, American
Association of Museums, MA Historians
Special Interest Group, ICOMOS



Profile

Sarah came to the Trust in 1998 after twelve years in the museum sector. As a volunteer she has worked in museums both overseas and in Australia. She has held professional positions in a wide range of city and regionally based museums in curatorial, registration, training and advisory roles. Sarah has also been self-employed as a museum/heritage consultant.

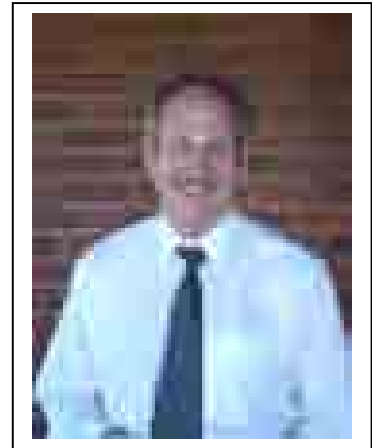
A strong commitment to the museum profession has seen Sarah serve as an active member of Museums Australia (including a period as WA State President and member of National Council). She has also been an ICOM Australia board member, a member of the Commonwealth Government's inaugural Visions of Australia Committee, and a member of the National Standing Committee for Regional, Specialist and Local Museums and Galleries. Sarah teaches two units annually in ECU's Certificate in Museum Studies and provides lectures on an annual basis for courses at UWA, Curtin and TAFE. She is an Adjunct Teaching Fellow at Curtin.

Her current position as Manager, Properties & Collections encompasses the interpretation and management of the Trust's property portfolio of heritage places, and the care and management of the moveable heritage collections. Her work involves working with a wide range of people, including Trust volunteers, in order to undertake everything from day to day maintenance to major conservation works, interpretation projects and planning.

NATIONAL TRUST OF AUSTRALIA (WA).....PERSONNEL

Mr Thomas E Perrigo

Director, Australian Council of National Trusts
Member Advisory Committee, Cultural Heritage, Curtin University
Director, Centre for History, University of WA
Australian Institute for Company Directors, Fellow
Australian Institute of Management, Associate Fellow
International Committee for the Conservation of Monuments and Sites
Museums Australia
Interpretation Australia



Profile

Thomas Perrigo is currently the Chief Executive Officer of the National Trust of Australia (WA) having held that position since August 1990.

Mr Perrigo has tertiary degrees in science and education, as well as tertiary qualifications in science and management. He has served on a number of Boards, Committees and Community bodies, both at a State, national and international level and is committed to the conservation and interpretation of Western Australia's heritage.

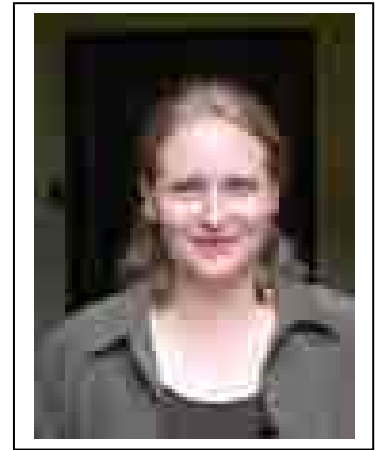
He is particularly aware of the challenges facing local communities in the management of heritage places and objects.

He has extensive experience in working with volunteers in the conservation and interpretation of the built and natural environment including cultural landscapes.

His interests include sports and the arts including walking and reading.

Ms Kelly Rippingale
BArch BA Cert Hort

Bachelor of Architecture (Hons),
University of WA
Bachelor of Arts (History & English),
University of WA
Certificate of Horticulture, Bentley
College of TAFE
Member, Architects' Board of WA,
Australia ICOMOS

**Profile**

Completing degrees in both architecture and history, Kelly has been involved in the heritage industry in Western Australia since her first professional appointment, to the Heritage and Special Projects branch of the then Building Management Authority, in 1993.

Employment with the state government entailed the procurement and project management of conservation projects for government assets, including conservation planning, heritage assessment and assessment of the first round of the Lotteries Commission heritage grants, giving a valuable insight into the structure of funding processes.

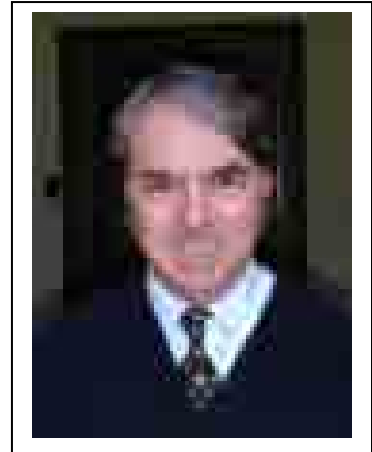
Subsequently employed by an architectural practice specialising in heritage conservation, Kelly has worked on numerous heritage planning and construction projects including major work at Fremantle Prison and Fairbridge Farm School.

Further work in private architectural practice gave Kelly sufficient experience to register with the Royal Australian Institute of Architects after which she spent eighteen months travelling and working in London on residential adaptations of listed buildings in the historic West End.

Kelly has been employed at the National Trust since 2002, firstly as Conservation Manager for the Golden Pipeline Project, and now as the Trust's Conservation Architect.

Enzo Sirna AM

Bachelor of Arts, University of Western Australia (BA)
Diploma of Education, University of Western Australia (Dip. Ed)
Member, Australian College of Education (MACE)
Jaycees Five Outstanding Young Australians Award (State and National)
Advance Australia Award
Australian Italian Friendship Award
Centenary Medal
Knight: Order of Merit, Italian Republic (Cavaliere)
Member, Order of Australia (AM)



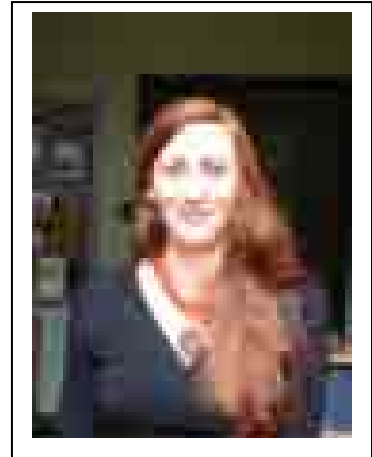
Profile

Enzo was born in Western Australia of Italian parents and completed his education here. A graduate from the University of Western Australia, focusing on languages and history, he worked at Penrhos College as the Head of Languages before becoming the Director of Studies, a position that he held for twelve years, from 1988 to 1999. In 2000 he accepted a position as the Senior Policy Advisor for the State Minister for Citizenship and Multicultural Interests, and in 2001 moved to the National Trust of Australia (WA) where he is currently the Deputy Chief Executive Officer overseeing the management of Special Projects (including the Luisini Winery Project), Human Resources, Education and Multicultural Programs.

Enzo is very involved in the Italian Community and is President of the Italo-Australian Welfare and Cultural Centre Inc. He has been on many boards and committees, including the Western Australian Museum of Natural Sciences, the Western Australian Citizenship and Multicultural Council, the McCusker Foundation for Alzheimer's Disease Research, the Curriculum Council of Western Australia Syllabus Committees and the Australian Federation of Ethnic Schools Association (Community Languages Australia).

Ms Helena Waldmann

Bachelor of Arts (double degree in Cultural Heritage Studies and Anthropology) Curtin University.
Associate Diploma of Applied Science in Photography, Mt Lawley TAFE.



Profile

Helena has worked at The National Trust of Australia (WA) since March 2004. As the Heritage Services Officer, her duties include maintenance of the heritage record keeping system, responding to queries from the public and the provision of administrative support.

After completing a three year Diploma in Photography, Helena worked as a photographer for several years and she still maintains a keen interest in taking photographs and caring for photographic archives. She has had photographs published in various newspapers, websites, magazines and books such as ‘City of Light’ by and ‘On the Homefront: West Australia and World War I’ (both edited by Dr Jenny Gregory).

A career change came after working for Historic Royal Palaces as a guide and attendant at Kensington Palace while living in London.

Helena has completed 9 out of 10 units of the Certificate of Museum Studies at Edith Cowan University, and volunteered at the West Australian Museum as a guide during the “Ann Frank: a history for today” exhibition. To support her recent university studies which included units in Media and Mass Communication, Helena worked as a supervisor at an independent cinema.

Helena also pursues other interests, such as her current project researching a book she would like to have published one day. The theme is changing advice on domestic matters over the 20th century.