



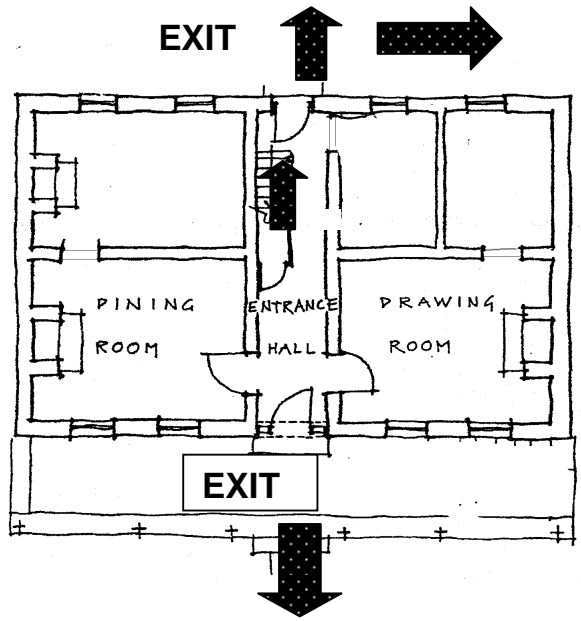
NATIONAL TRUST

VENUE AND SAFETY INFORMATION FOR SCHOOL EXCURSIONS

Venue Name	Harper's Mansion
Location	Old Hume Highway, Berrima
Phone Number	02 4877 1508
Web Address	www.nsw.nationaltrust.org.au
Insurance	Venue has public liability cover

Program	Recommended age group/fitness level/prerequisite skills **	Staff accreditation/competence	Potential risks <i>List hazards/risks related to each activity/program and the venue</i>	Control Strategies <i>Outline strategies for ensuring visitor safety for this potential risk</i>
All	Years 2-6 Fitness n/a Skills n/a	Volunteers trained by venue staff	Stairs – steep and narrow	Students are advised of hazard and supervised while using stairs
			Fire Risk	Fire extinguishers and exit plan in place
			Uneven paths	Students are advised of hazard and warned not to run
			Pond in garden	Fenced
			Snakes and insect bites	Grounds are mown regularly and advice given on possible presence of snakes

** Because of its heritage status Harper's Mansion is not fully accessible to students with some disabilities. While every attempt will be made to assist all students, teachers should alert us to potential problems prior to the visit.



Plan of House plus Evacuation Routes

